

# 5704

ASSESSMENT REPORT ON

McDAME LAKE PROPERTY

LIARD M. D.

LAT. 59° 15' 30" N., LONG. 129° 29' 30" W.

DIAMOND DRILLING - 6 HOLES - 1,504 FT.

PERIOD:- JUNE 20 TO JULY 20, 1975

J. SCHUSSLER - UNDER AUTHORIZED GROUPING  
TOP GROUP

N. T. S. 104 - P - 6

VANCOUVER, B. C.

NOVEMBER 24, 1975

J. SCHUSSLER

D. H. BROWN, P. Eng.

Department of Mines and Petroleum Resources	
ASSESSMENT REPORT	
NO.	5704
	MAP.....

C O N T E N T S

	<u>Page</u>
INTRODUCTION .....	1
PROPERTY LOCATION AND ACCESS .....	1
GEOLOGICAL SETTING .....	1
SCOPE OF SURVEY .....	2
METHOD OF SURVEY .....	2
CORE LOGGING .....	2
STATEMENTS OF COST AND APPLICATION .....	3 - 4

MAPS

# 1 Figure 1	INDEX MAP	Opposite page 1
# 2	<i>MINERAL CLAIM MAP</i>	
# 3 Figure 2	DRILL HOLE LOCATION MAP	In pocket

APPENDIX A - DRILL HOLE LOGS After page 2

HOLES 75-2, 75-3, 75-4, 75-5, 75-6, 75-7

1:250000

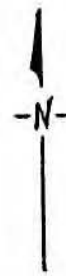
Location Map  
McDAME LAKE M.C.'s

NTS. 104-R-6

D.H.B.

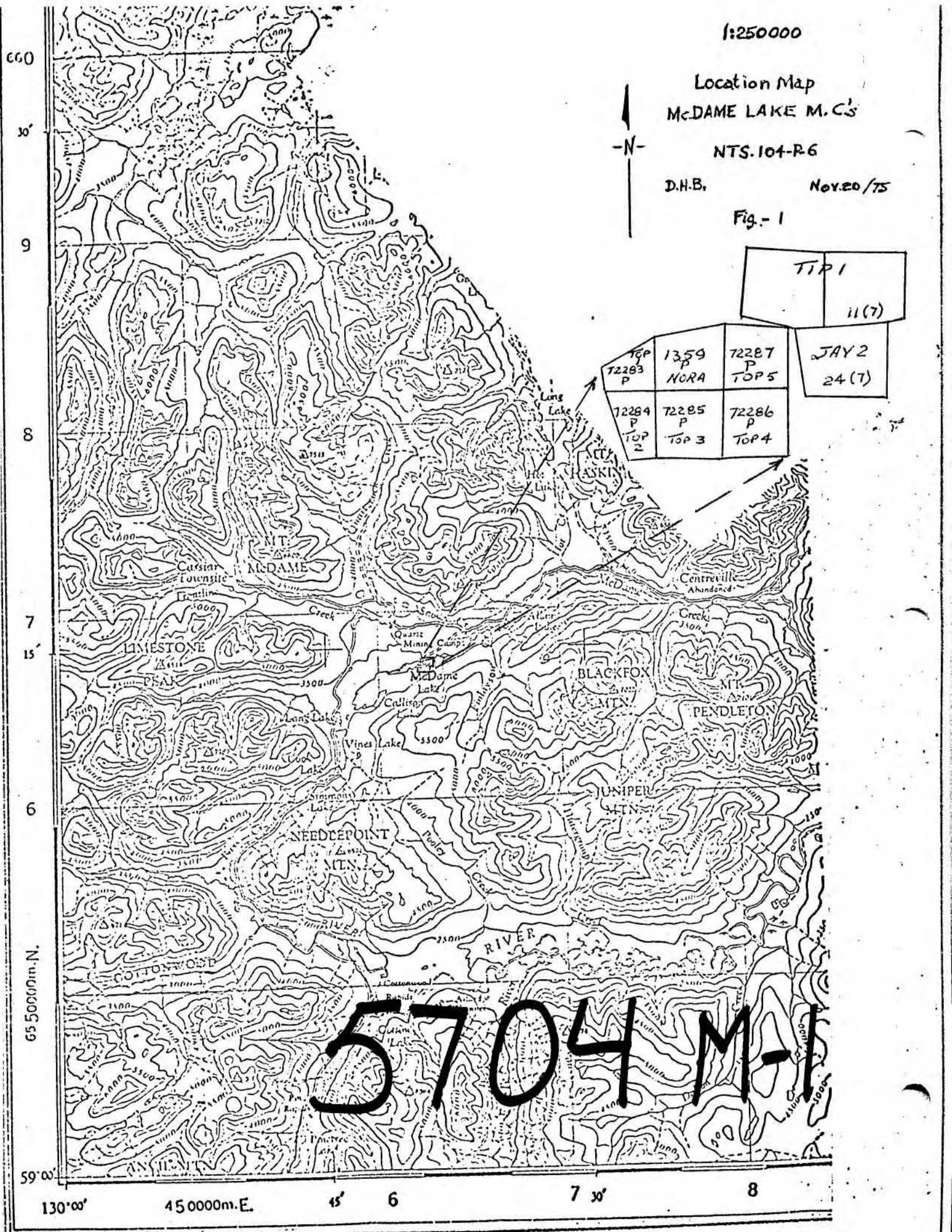
Nov. 20 / 75

Fig. - 1



TIP 1	
11 (7)	
JAY 2	24 (7)

TOP 72283 P	1359 P NCRA	72287 P TOP 5
72284 P TOP 2	72285 P TOP 3	72286 P TOP 4



5704 M-1

660  
30'  
9  
8  
7  
15'  
6  
59'00"

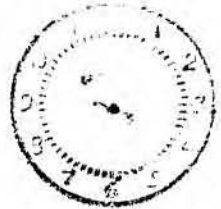
130°00'      45 000m.E.      45'      6      7 30'      8

13135 - 20th Ave.,  
Surrey, B. C.

January 20, 1976

JAN 21 '76 AM

Chief Gold Commissioner,  
Dept. of Mines & Petroleum Resources,  
Parliament Buildings,  
Victoria, B. C.



DEPT. OF MINES  
AND PETROLEUM RESOURCES

Assessment Report on  
McDame Lake Property  
Top Group

Dear Sir:

Re your letter - File 166 - Liard dated Jan 8, 1976  
requesting a location map relative to McDame Lake, we are enclosing  
herewith a sketch map showing the Top Group claims.

We note that the coordinates given on the cover and the  
title page are somewhat inaccurate and would ask that you alter  
your copies of the Top Group assessment report to conform with the  
following coordinates:

Lat. 59° 14' 30" N., Long 129° 39' 45" W.

Regarding the drill hole locations relative to the south-  
west corner of the Nora M.C. Record No. 1359 P as zero N., zero E.,  
the following schedule locates the diamond drill holes:

<u>Drill Hole</u>	<u>Northing</u>	<u>Easting</u>	<u>Dip/Brg.</u>	<u>Length</u>
S.W. corner Nora M.C.	zero N	zero E.		
D.D.H. 75-2	150' N	400' E.	48° N.	396'
D.D.H. 75-3	150' N	400' E.	58° S.	239'
D.D.H. 75-4	250' N	545' E.	47° N.	152'
D.D.H. 75-5	248' N	545' E.	58° N.	130'
D.D.H. 75-6	685' N	790' E.	54° N.	391'
D.D.H. 75-7	20' N	790' E.	45° N.	196'

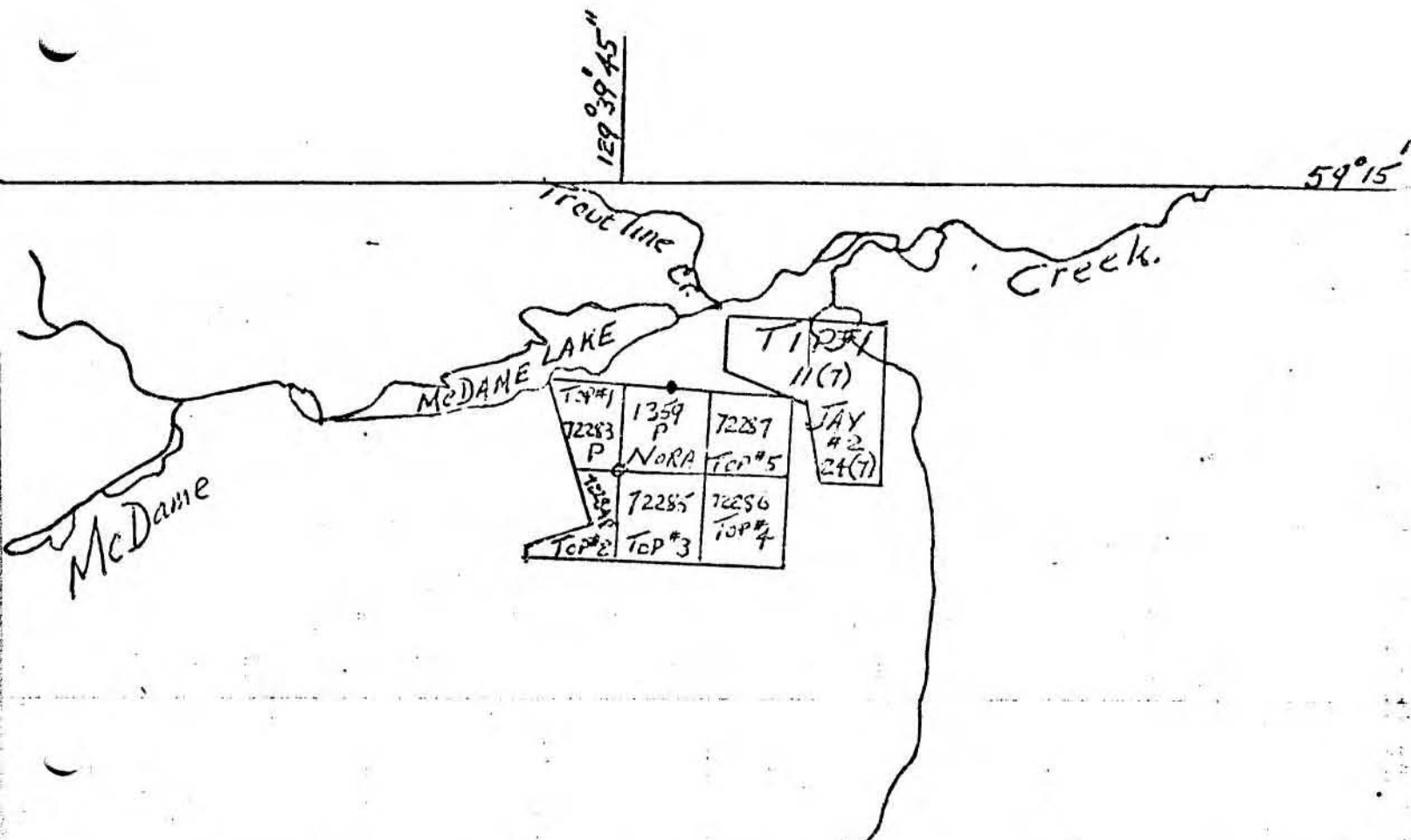
We trust the above information will fulfill your requirements.

Yours truly,

J. Schussler

*J. Schussler*

FILE NO.	
FILING CLERK	
REFERRED TO	
DATE	
INITIAL	
D.M.	
ADM (M)	
ADM (P)	
C.G.C.	
C.P.R.	
DCSG	
ACFR	
G.C.	
ACCTS.	
GENL.	
INSP.	
M. REV.	
LC. & P.	



Department of  
Mines and Petroleum Resources  
ASSESSMENT REPORT  
NO. 5704 MAP 2



MINERAL CLAIM MAP  
104P/4E (M)

ASSESSMENT REPORT

McDAME LAKE PROPERTY

LIARD M. D.

DIAMOND DRILLING REPORT - TOP GROUP  
PERIOD:- JUNE 20 - JULY 20, 1975

Introduction

Effective November 10, 1975, the Nora, Top 1 - 5 (incl.), Tip #1 and Jay #2 M. C.'s were officially grouped under the signatures of the owners to be known as the Top Group of the McDame Lake property operated by J. Schussler.

Property Location and Access (Lat 59° 15' 30" N., Long 129° 29' 30" W.)

The property is located immediately east of McDame Lake which is drained by McDame Creek, part of the Dease River system. The area is open-wooded and the topographic relief is between 3000 and 4000 feet within the group area. A road on the north side of McDame Creek is linked with the road from Dease Lake to Watson Lake which is the largest supply centre in the area and is 80 to 90 miles distant.

Geological Setting

The property is underlain by an assemblage of Upper Devonian and Lower Mississippian volcanics and sedimentary rocks known as the Sylvester group which overly the limy sediments of the McDame group on a limb of a synclinatorium. Lenses, sills and stocks of ultramafic



rocks of Lower Mississippian age cut the Sylvester group. Locally quartz veins occur in the volcanic rocks of the Sylvester group carrying free gold, pyrite and tetrahedrite. The exploration of these veins is the object of the current drill investigation.

#### Scope of Survey

Five of the six holes drilled were drilled to investigate electromagnetic and magnetic anomalies outlined by a geophysical survey carried out by S. Presunka Geophysical Co. One hole was drilled to investigate outcropping veins at depth.

#### Method of Survey

The drill holes were drilled by a two man experienced drill crew using a Boyles Bros. B.B.S. 1 diamond drill with wireline equipment and drilling AQ sized Core. The core is stored at the Watson Lake Flying Services' warehouse in Watson Lake.

#### Core Logging

The 1,504 feet of core was logged (See logs of Holes 75-2 to 75-7 appended) by Mr. Grant Abbott, a graduate (B.Sc.) in geology from U.B.C. (1972) and an undergraduate Master's student (1974 from Queens University, Kingston, Ontario.

## STATEMENT OF DIRECT COSTS INVOLVED IN DIAMOND DRILLING OPERATION

June 20, 1975 - July 20, 1975MOBILIZATION

Machinery shipped from Vancouver by Canadian Freightways  
to Watson Lake and by D. J. Drilling trucks from Watson  
Lake to McDame Lake \$ 1,050.00

Labour during move in 350.00 \$ 1,400.00

DRILLING

Labour \$ 7,300.00

Diamond Articles - 37 AQ Bits \$ 5,450.00  
 9 AW Casing Shoes 1,518.75  
 3 BW Casing Shoes 319.95  
 2 Reaming Shells 242.50 7,531.20

Fuel - 7 drums gas, grease and oil 350.00

70 Core Boxes 245.00

Food and Camp Supplies 1,950.00

Parts - 2 AQ Outer Tubes \$ 81.20  
 3 AQ Inner Tubes 201.90  
 36 Corelifter Springs 135.00  
 6 Corelifter Cases 56.85  
 2 Stabilizer Rings 27.00  
 2 Locking Rings 40.00  
 2 Locking Couplings 114.90  
 Casing left in holes and  
 worn out - 60 ft. AW 300.00  
 22 ft. BW 147.95 1,104.80 18,481.00

DEMOBILIZATION

McDame Lake to Watson Lake by D. J. Drilling trucks  
and Watson Lake to Vancouver by Canadian Freightways  
\$ 750.00

Labour 375.00 1,125.00

REPORT PREPARATION

Typing and preparation by Mrs. E. Schussler 50.00

Total \$ 21,056.00





**B. DRILLING**

1504 feet of AXW Diamond Drilling at \$14.  
(Details as per report submitted)

COST
\$21,056.00

I wish to apply \$ <sup>13000</sup> ~~17000~~ <sup>16,000</sup> of this work to the claims listed below.

(State number of years to be applied to each claim and its month of record)

8 claims:- 10 years each to Nora, Top Nos. 1 - 5 incl., Tip No. 1 and Jay No. 2

Record Nos. 1359P, 72283 - 72287 (P), 11 and 24 (July)

Diamond drilling report to be submitted within two weeks,

**C. PROSPECTING**

(Details as per report submitted)

COST

I wish to apply \$ \_\_\_\_\_ of this work to the claims listed below.

(State number of years to be applied to each claim and its month of record)

**D. GEOLOGICAL, GEOCHEMICAL, GEOPHYSICAL (Includes line cutting)**  
(State type of work)

COST

TOTAL

I wish to apply \$ \_\_\_\_\_ of this work to the claims listed below.

(State number of years to be applied to each claim and its month of record)

NOTE—Dollar value of work done under A, B, C, or D sections, totalling \$200, may be applied as one year's work.

Who paid for the above-described work?

Name D & J Drilling Co.

Address 13135 - 20th Ave.,

Surrey, B. C.

If you intend to claim a refund of cash in lieu under the provisions of the *Mineral Act*, you must make application on this affidavit under A, B, C, or D sections as applicable.

4. That I have not and will not use the work declared herein in any way for the purposes of obtaining tax exemption on a Crown-granted mineral claim under the terms of the *Mineral Land Tax Act*.

SWORN and subscribed to at \_\_\_\_\_

this \_\_\_\_\_ day of \_\_\_\_\_

19 \_\_\_\_\_, before me—

*D. H. Brown*



Dip at Collar \_\_\_\_\_ Notes: \_\_\_\_\_  
 Bearing \_\_\_\_\_  
 Mag. Decl'n \_\_\_\_\_  
 Baseline \_\_\_\_\_  
 Acid Tests \_\_\_\_\_

**DIAMOND DRILL HOLE**  
**LOG AND SAMPLE RECORD**  
 CANADA TUNGSTEN MINING  
 CORPORATION LTD.

Page \_\_\_\_\_ DDH \_\_\_\_\_

Property \_\_\_\_\_ N \_\_\_\_\_ E \_\_\_\_\_

Location Liard Mining Div. Started \_\_\_\_\_

Logged by Grant Abbott Footage Drilled \_\_\_\_\_

FOOTAGE		LENGTH	FORMATION	DESCRIPTION	SAMPLE NO.	FOOTAGE		LENGTH	ASSAY		LENGTH x ASSAY		AVERAGE ASSAY		
FROM	TO					FROM	TO		% WO <sub>3</sub>	% Cu	% WO <sub>3</sub>	% Cu	% WO <sub>3</sub>	% Cu	
				<p>Throughout all the holes the rocks are mainly aphanitic to fine grained, dark green volcanics; coarser grained parts are speckled or mottled.</p> <p>fracturing is generally intense; orientations are variable and irregular; serpentized and slickensided surfaces also common; locally breccias are developed.</p> <p>calcite is common in veinlets and on fracture surfaces.</p> <p>quartz occurs in a few places in veinlets up to 4" across.</p> <p>pyrite occurs as veinlets and sub hedval grains within highly fractured light brown aphanitic and soft intervals. Am not sure what this rock is; in places it looks like a separate unit; elsewhere it looks like an alteration of the massive dark green volcanics; much of these intervals appears to be comprised of dolomite or some other carbonate.</p>											

*Grant Abbott*



Dip at Collar 48°  
 Bearing \_\_\_\_\_  
 Mag. Decl'n \_\_\_\_\_  
 Baseline \_\_\_\_\_  
 Acid Tests \_\_\_\_\_

Notes: \_\_\_\_\_

**DIAMOND DRILL HOLE**  
**LOG AND SAMPLE RECORD**  
 CANADA TUNGSTEN MINING  
 CORPORATION LTD.

Page 1 DDH. 75-2  
 N \_\_\_\_\_ E \_\_\_\_\_  
 Property McDame Started June 20/75  
 Location Liard Mining Div. Finished June 27/75  
 Logged by Grant Abbott Footage Drilled 396

FOOTAGE		LENGTH	FORMATION	DESCRIPTION	SAMPLE NO.	FOOTAGE		LENGTH	ASSAY		LENGTH x ASSAY		AVERAGE ASSAY	
FROM	TO					FROM	TO		% WO <sub>3</sub>	% Cu	% WO <sub>3</sub>	% Cu	% WO <sub>3</sub>	% Cu
0	100			- massive, dark green aphanitic to fine grained volcanics; 77' - 100' breccia, looks like a flow feature and not fault - most fractures are very irregular but seem to form conjugate sets with both planes - 45° to core axis										
100	103			- pyritic interval, sulphides disseminated within 6" of massive, buff coloured volcanics at 100' and in dark green volcanics										
103	199			- massive, dark green aphanitic to fine grained volcanics.										
199	213			- pyritic, massive, aphanitic volcanics.										
213	222.5			- massive, dark green volcanics.										
225.5	225			- pyritic, massive, aphanitic buff coloured volcanics.										
225	330			- massive, dark green, fine grained volcanics 231-232 flow? breccia 282-285										
330	334			- pyritic, buff coloured, aphanitic volcanics.										

*Grant Abbott*

Dip at Collar 48° Notes: \_\_\_\_\_  
 Bearing \_\_\_\_\_  
 Mag. Decl'n \_\_\_\_\_  
 Baseline \_\_\_\_\_  
 Acid Tests \_\_\_\_\_

# DIAMOND DRILL HOLE

## LOG AND SAMPLE RECORD

CANADA TUNGSTEN MINING  
CORPORATION LTD.

Page 2 DDH. 75-2  
 N \_\_\_\_\_ E \_\_\_\_\_  
 Property McDame Started June 20/75  
 Location Liard Mining Div. Finished June 27/75  
 Logged by \_\_\_\_\_ Footage Drilled 396

FOOTAGE		LENGTH	FORMATION	DESCRIPTION	SAMPLE NO.	FOOTAGE		LENGTH	ASSAY		LENGTH x ASSAY		AVERAGE ASSAY	
FROM	TO					FROM	TO		% WO <sub>3</sub>	% Cu	% WO <sub>3</sub>	% Cu	% WO <sub>3</sub>	% Cu
334	382			- dark green, fine grained volcanics - 345 - 353 - pyrite disseminated within dark green volcanic										
382	383			- buff, massive, pyrite volcanics										
383	396			- dark green, aphonitic volcanics 392' - 4" quartz vein.										

*Al Brown*



Dip at Collar 58° Notes: \_\_\_\_\_  
 Bearing \_\_\_\_\_  
 Mag. Decl'n \_\_\_\_\_  
 Baseline \_\_\_\_\_  
 Acid Tests \_\_\_\_\_

**DIAMOND DRILL HOLE**  
**LOG AND SAMPLE RECORD**  
 CANADA TUNGSTEN MINING  
 CORPORATION LTD.

Page 1 DDH 75-3

Property McDame Started June 28/75  
 Location Liard Mining Div. Finished June 30/75  
 Logged by Grant Abbott Footage Drilled 239

FOOTAGE		LENGTH	FORMATION	DESCRIPTION	SAMPLE NO.	FOOTAGE		LENGTH	ASSAY		LENGTH x ASSAY		AVERAGE ASSAY	
FROM	TO					FROM	TO		% WO <sub>3</sub>	% Cu	% WO <sub>3</sub>	% Cu	% WO <sub>3</sub>	% Cu
0	19			overburden										
19	22	3		- medium grained dark grey porphyritic (feldspar) volcanics.										
22	180	158		- aphanitic to fine grained, locally porphyritic, dark green, massive volcanics. - compositional layering appears to be consistently oriented at 70° to core axis - several sets of conjugate fractures are present and as a result, fracturing appears to be very irregular, the strongest fractures are oriented at 45° to core axis - narrow quartz veins 2" wide at 22', 41', 51', 150'										
180	239	59		- buff and olive green, aphanitic to very fine grained volcanics; most of this section is brecciated and compositional layering very irregular; looks like a flow breccia, matrix is black to dark green - fractures fairly common at 45° and 30° to core axis (conjugate set?) - a few fractures filled with calcite										

*Grant Abbott*

Dip at Collar 47° Notes: \_\_\_\_\_  
 Bearing \_\_\_\_\_  
 Mag. Decl'n \_\_\_\_\_  
 Baseline \_\_\_\_\_  
 Acid Tests \_\_\_\_\_

**DIAMOND DRILL HOLE**  
**LOG AND SAMPLE RECORD**  
 CANADA TUNGSTEN MINING  
 CORPORATION LTD.

Page \_\_\_\_\_ DDH. 75-4

N \_\_\_\_\_ E \_\_\_\_\_

Property McDame Started June 30/75  
 Location Liard Mining Div. Finished July 5/75  
 Logged by Grant Abbott Footage Drilled 152

FOOTAGE		LENGTH	FORMATION	DESCRIPTION	SAMPLE NO.	FOOTAGE		LENGTH	ASSAY		LENGTH x ASSAY		AVERAGE ASSAY	
FROM	TO					FROM	TO		% WO <sub>3</sub>	% Cu	% WO <sub>3</sub>	% Cu	% WO <sub>3</sub>	% Cu
0	7			- overburden										
7	37			- intensely fractured, dark green fine grained volcanics.										
37	45			- aphanitic to fine grained pink and buff volcanics; fine grained pyrite in fractures.										
45	56.5			- intensely fractured fine grained dark green volcanics.										
56.5	74			- intensely fractured pink and buff fine grained volcanics, intermixed with minor dark green volcanics; here looks like alteration and not separate rock type.										
74	88			- massive fine grained dark green volcanics 86.5' - 88' breccia										
88	103			- buff and pink volcanics, in places very siliceous; 95' - 96' massive white quartz - intensely fractured, fairly regularly oriented at 45° to core axis - fair amount of fine grained pyrite in fractures.										
103	108			- dark green volcanics										
108	115			- buff and pink zone; has pronounced mottled texture and dark green volcanics seem to be replaced										

*Grant Abbott*



Dip at Collar 58° Notes: \_\_\_\_\_  
 Bearing \_\_\_\_\_  
 Mag. Decl'n \_\_\_\_\_  
 Baseline \_\_\_\_\_  
 Acid Tests \_\_\_\_\_

**DIAMOND DRILL HOLE**  
**LOG AND SAMPLE RECORD**  
 CANADA TUNGSTEN MINING  
 CORPORATION LTD.

Page 1 DDH. 75-5  
 N \_\_\_\_\_ E \_\_\_\_\_  
 Property McDame Started July 5/75  
 Location Liard Mining Div. Finished July 7/75  
 Logged by Grant Abbott Footage Drilled 130

FOOTAGE		LENGTH	FORMATION	DESCRIPTION	SAMPLE NO.	FOOTAGE		LENGTH	ASSAY		LENGTH x ASSAY		AVERAGE ASSAY	
FROM	TO					FROM	TO		% WO <sub>3</sub>	% Cu	% WO <sub>3</sub>	% Cu	% WO <sub>3</sub>	% Cu
0	5			- overburden										
5	40			- aphanitic to fine grained dark grey volcanics - compositional layering at 45° to core axis. - breccia at 29' - buff zone 1' wide envelopes narrow quartz vein at 30'										
40	55			- strongly fractured and disrupted buff and pink zone, looks like alteration, - very fine grained pyrite along fractures.										
55	67			- massive dark green volcanics - breccia at 57' - 58', fault										
67	88			- strongly fractured buff and olive green volcanic. - minor pyrite throughout, 1/4" quartz vein with pyrite at 93'										
88	103			- massive, dark green, aphanitic to fine grained volcanics.										
103	112			- alteration? zone, highly fractured pink and buff, siliceous rocks - contains moderate amounts of fine grained pyrite.										

*Grant Abbott*

Dip at Collar 58° Notes:  
 Bearing \_\_\_\_\_  
 Mag. Decl'n \_\_\_\_\_  
 Baseline \_\_\_\_\_  
 Acid Tests \_\_\_\_\_

**DIAMOND DRILL HOLE**  
**LOG AND SAMPLE RECORD**  
 CANADA TUNGSTEN MINING  
 CORPORATION LTD.

Page 2 DDH 75-5  
 \_\_\_\_\_ N \_\_\_\_\_ E \_\_\_\_\_  
 Property McDame Started July 5/75  
 Location Liard Mining Div. Finished July 7/75  
 Logged by Grant Abbott Footage Drilled 130

FOOTAGE		LENGTH	FORMATION	DESCRIPTION	SAMPLE NO.	FOOTAGE		LENGTH	ASSAY		LENGTH x ASSAY		AVERAGE ASSAY	
FROM	TO					FROM	TO		% WO <sub>3</sub>	% Cu	% WO <sub>3</sub>	% Cu	% WO <sub>3</sub>	% Cu
112	130			- dark green volcanics, - brecciated and highly fractured - buff alteration? zones at 117.5' - 119' and 125.5' - 129'										

*Grant Abbott*



Dip at Collar 54° Notes:  
 Bearing \_\_\_\_\_  
 Mag. Decl'n \_\_\_\_\_  
 Baseline \_\_\_\_\_  
 Acid Tests \_\_\_\_\_

**DIAMOND DRILL HOLE**  
**LOG AND SAMPLE RECORD**  
 CANADA TUNGSTEN MINING  
 CORPORATION LTD.

Page 1 DDH. 75-6  
 Property McDame Started July 7/75  
 Location Liard Mining Div. Finished July 16/75  
 Logged by Grant Abbott Footage Drilled 391

FOOTAGE		LENGTH	FORMATION	DESCRIPTION	SAMPLE NO.	FOOTAGE		LENGTH	ASSAY		LENGTH x ASSAY		AVERAGE ASSAY	
FROM	TO					FROM	TO		% WO <sub>3</sub>	% Cu	% WO <sub>3</sub>	% Cu	% WO <sub>3</sub>	% Cu
0	59			- overburden										
59	80			- aphanitic to fine grained light brown and grey volcanics. - pyrite occurs as fine grained euhedral crystals; also in irregular veinlets minor arseno pyrite.										
80	111			- fine grained, mottled dark green volcanics - fractures common at 45° to core axis										
111	122			- aphanitic, light brown volcanics - some disseminated pyrite										
122	137			- dark green, fine grained volcanics										
137	189			- light brown aphanitic volcanics - abundant pyrite in veinlets and disseminations										
189	195			- massive, dark green volcanics										
195	212			- buff, aphanitic volcanics with moderate amounts of disseminated pyrite.										
212	240			- massive, dark green volcanics - weakly fractured; 45° to core axis										
240	246			- buff, aphanitic volcanics; 241 - 242 unusually siliceous and pyritic										

*Grant Abbott*



Dip at Collar 54° Notes:  
 Bearing \_\_\_\_\_  
 Mag. Decl'n \_\_\_\_\_  
 Baseline \_\_\_\_\_  
 Acid Tests \_\_\_\_\_

**DIAMOND DRILL HOLE**  
**LOG AND SAMPLE RECORD**  
 CANADA TUNGSTEN MINING  
 CORPORATION LTD.

Page 2 DDH 75-6

Property McDame Started July 7/75  
 Location Liard Mining Div. Finished July 16/75  
 Logged by Grant Abbott Footage Drilled 391'

FOOTAGE		LENGTH	FORMATION	DESCRIPTION	SAMPLE NO.	FOOTAGE		LENGTH	ASSAY		LENGTH x ASSAY		AVERAGE ASSAY	
FROM	TO					FROM	TO		% WO <sub>3</sub>	% Cu	% WO <sub>3</sub>	% Cu	% WO <sub>3</sub>	% Cu
246	280			- dark green volcanics, much of this section is "spotted" with fine grained brown minerals, brown veinlets common at 271' - 272' - buff, pyritic interval, quartz vein 1" across.										
280	291			- brown, speckled, pyritic interval										
291	294			- dark green volcanics.										
294	298			- buff, pyritic, and unusually quartz rich volcanics; poor recovery										
298	352			- speckled or mottled, brownish green volcanics; - compositional layering highly contorted and intensely fractured. - fractures at 45° to core axis, in places brecciated. - from 325' on all rocks are massive aphanitic and buff coloured; very little pyrite										
352	391			- dark green, aphanitic to fine grained volcanics, moderately fractured; 45° to core axis, most are serpentized, some filled with calcite or quartz.										

*Grant Abbott*

Dip at Collar 45° Notes: \_\_\_\_\_  
 Bearing \_\_\_\_\_  
 Mag. Decl'n \_\_\_\_\_  
 Baseline \_\_\_\_\_  
 Acid Tests \_\_\_\_\_

**DIAMOND DRILL HOLE**  
**LOG AND SAMPLE RECORD**  
 CANADA TUNGSTEN MINING  
 CORPORATION LTD.

Page 1 DDH 75-7

Property McDame Started July 17/75  
 Location Liard Mining Div. Finished July 20/75  
 Logged by Grant Abbott Footage Drilled 196

FOOTAGE		LENGTH	FORMATION	DESCRIPTION	SAMPLE NO.	FOOTAGE		LENGTH	ASSAY		LENGTH x ASSAY		AVERAGE ASSAY	
FROM	TO					FROM	TO		% WO <sub>3</sub>	% Cu	% WO <sub>3</sub>	% Cu	% WO <sub>3</sub>	% Cu
0	9			- overburden										
9	14.5			- fine grained, massive, slightly porphyritic (white feldspar) dark green volcanics										
14.5	37			- massive, buff and olive green aphanitic volcanics; contain conspicuous dark brown bands up to 3" wide.										
				- narrow quartz veins at 15.5', 20', 28', 36'										
				- small amounts of disseminated pyrite										
37	70			- massive, aphanitic to fine grained dark green volcanics; in places slightly porphyritic.										
				- s84' - 88' pronounced breccia										
109	130			- buff and olive green, aphanitic to fine grained volcanics.										
				- very little pyrite, narrow quartz veins 115.5', 126.5'										
130	142			- massive, fine grained, dark green volcanics										
142	173			- buff and olive green, very fine grained volcanics, very little pyrite.										
173	180			- massive dark green volcanics										
				- quartz veins 1/2" wide at 187', 188'										
				- moderate amounts of pyrite										
				- throughout the hole, fracturing is only moderately developed and is very irregular.										
				- compositional banding appears to be at 45° to core axis.										

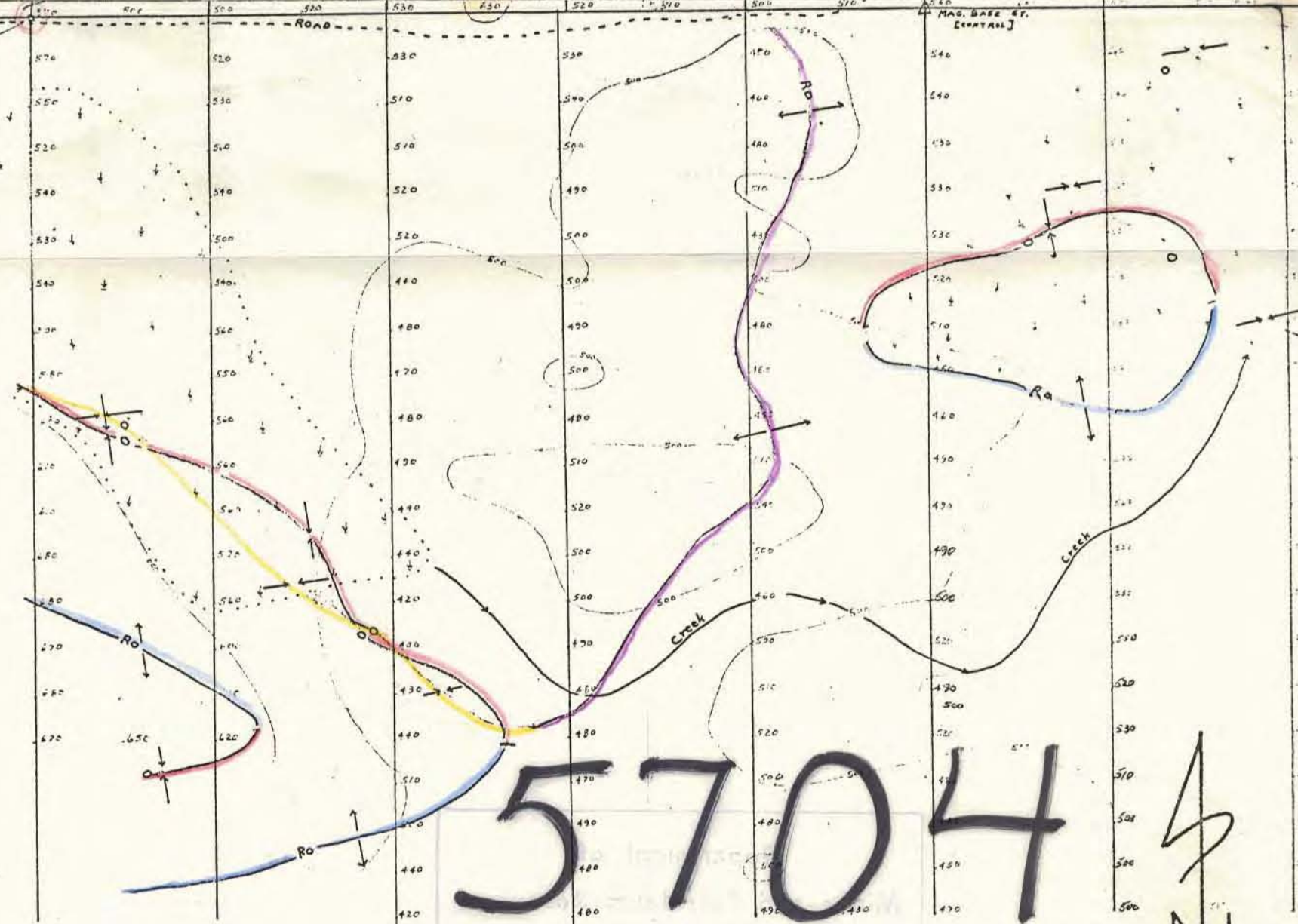
*Grant Abbott*





NORA  
M.C.

1. P. 123456 M  
 2. P. 123456 M  
 3. P. 123456 M  
 4. P. 123456 M  
 5. P. 123456 M



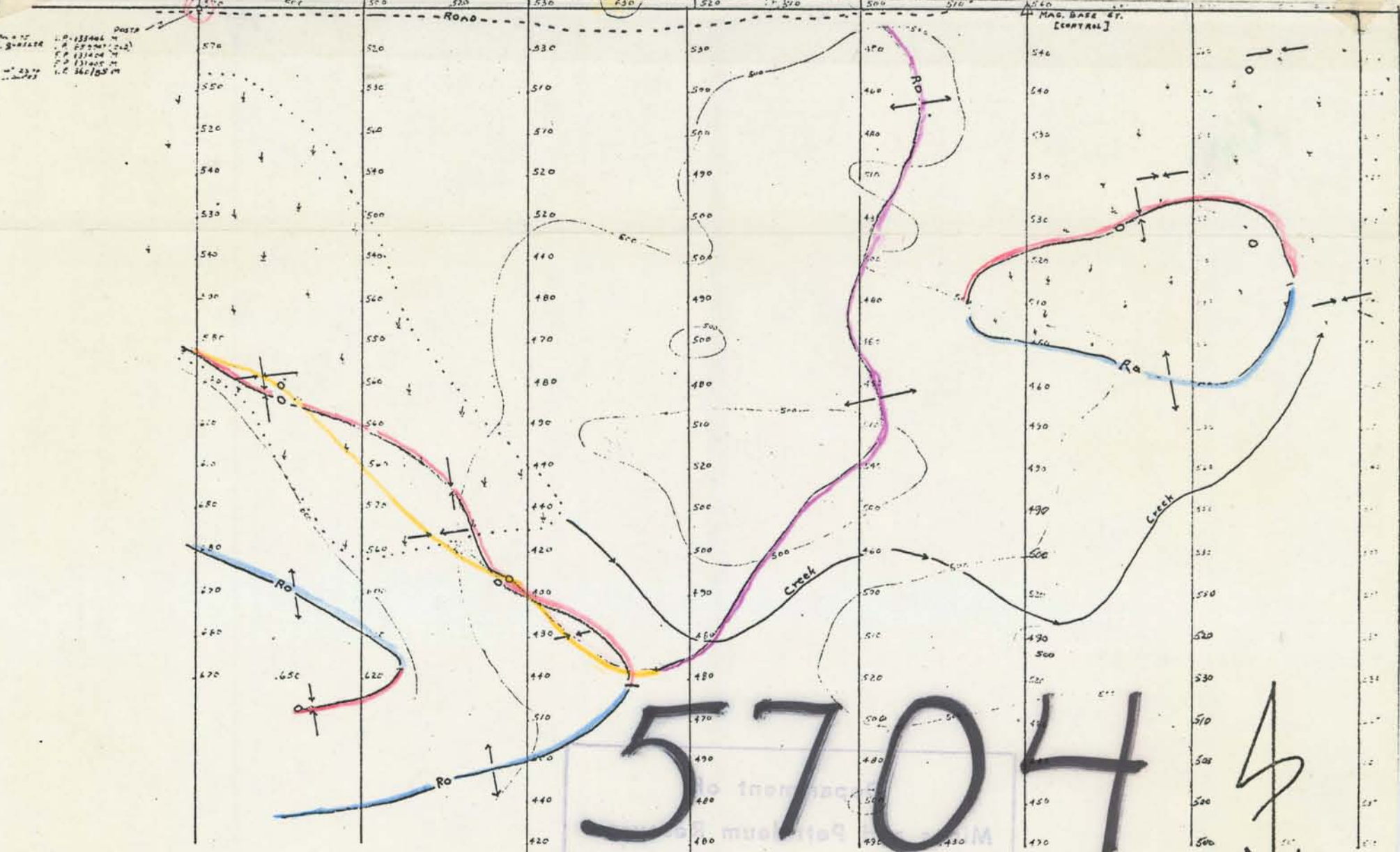
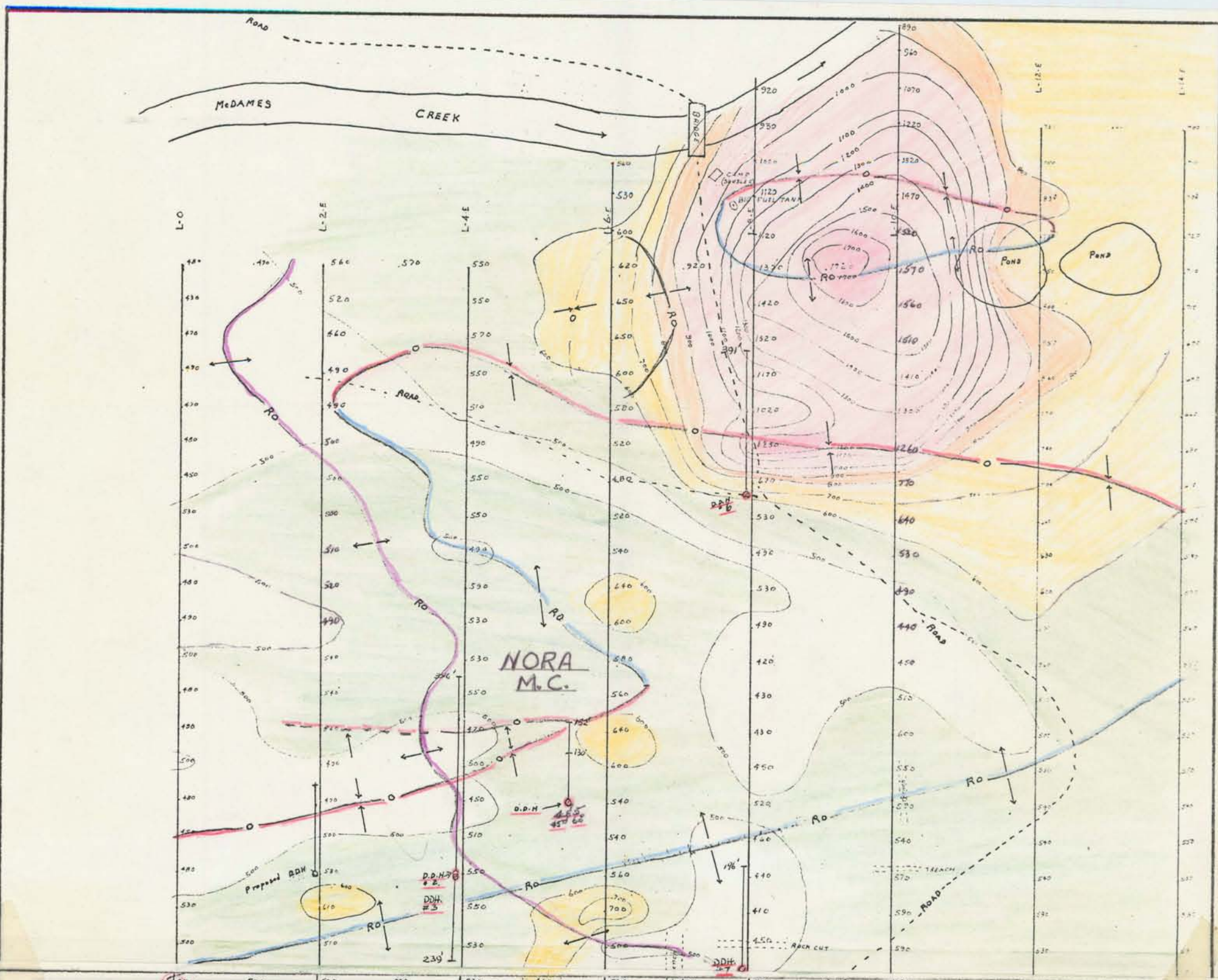
5704  
M-3

- LEGEND
- E.M.-IL CONDUCTOR ST. 17.8
  - E.M.-IL RO [REVERSE CROSS-OVER] ST. 17.8
  - E.M.-IL CONDUCTOR ST. 18.6
  - E.M.-IL RO [REVERSE CROSS-OVER] ST. 18.6

MAGNETOMETER SURVEY  
 N.S.T. M.F. 1 FLUX GATE Ser. No. 905454  
 MAGNETOMETER Adjusted to read 500 for background  
 Contours every 100 gammas  
 SCALE: 1"=200'  
 MAY 8 1975  
 Steve Resnick  
 S.H. Brown







5704  
M-3

- LEGEND
- E.M.-16 CONDUCTOR ST. 17.B
  - Ro— E.M.-16 RO [REVERSE CROSS-OVER] ST. 17.B
  - E.M.-16 CONDUCTOR ST. 18.4
  - Ro— E.M.-16 RO [REVERSE CROSS-OVER] ST. 18.4

MAGNETOMETER SURVEY  
NST. M.F.1 FLUX GATE Ser. No. 905454  
MAGNETOMETER Adjusted to read 500 γ for background  
Contours every 100 gammas  
SCALE: 1"=200'

MAY 8 1975  
Steve Piszunski

S.H. Brown

