

5707

CANADIAN SUPERIOR EXPLORATION LIMITED

DIAMOND DRILLING REPORT  
ON THE  
TOPLEY RICHFIELD PROPERTY

#5707

LOCATION: 7 miles north of Topley, B.C.  
Lat: 54°34' N Long: 126°14'W

Claim Names: REDTOP, RICHFIELD, TR.

Work Period: July 28 - August 3, 1975  
93L/9W

Report Submitted by  
J. Baker, B.Sc.

Department of  
Mines and Petroleum Resources  
ASSESSMENT REPORT  
NO. 5707 MAP

TABLE OF CONTENTS

SUMMARY

COST STATEMENT

DRILL LOGS

DRILLING CONTRACT

CERTIFICATE

ILLUSTRATIONS:

#1 Location Map (1" = 1/2 mi)

#2 Drill Hole Plan (1" = 200')

## SUMMARY

The Topley Richfield prospect is a gold/silver property located 7 miles north of Topley, B.C. and accessible by road from the Granisle Topley highway.

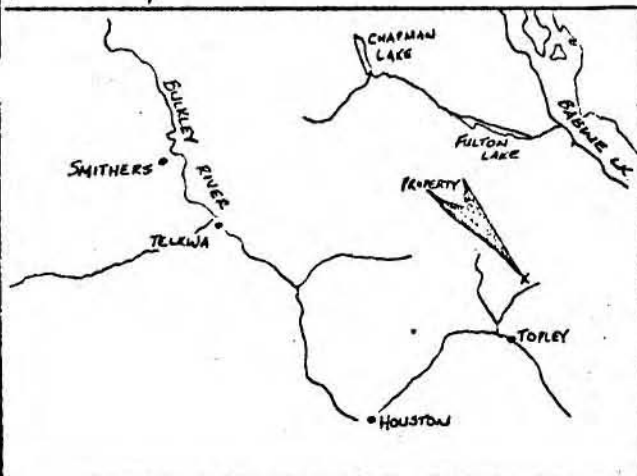
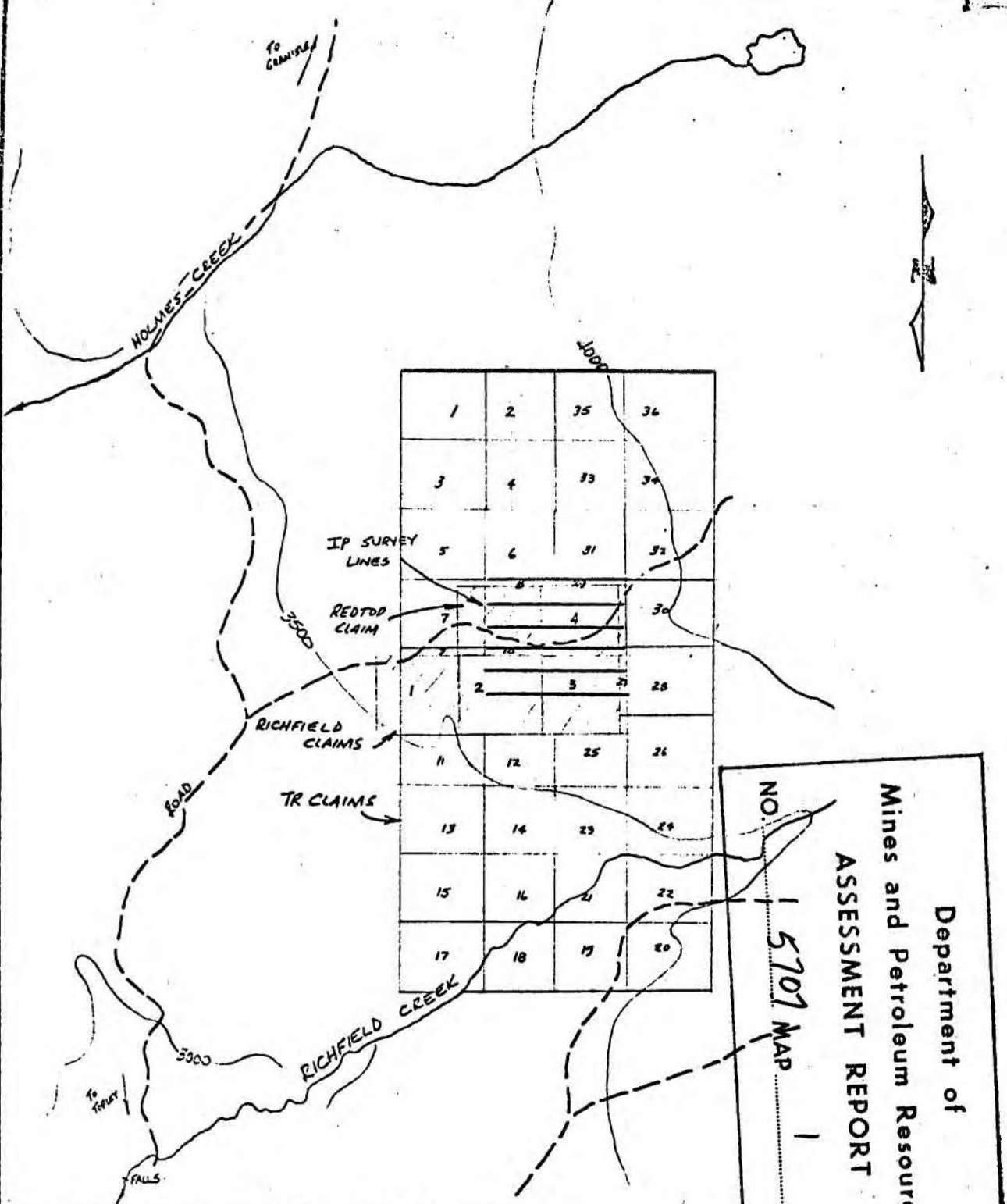
During the 1920's three levels of underground workings were developed by the Richfield Mining Company in an unsuccessful search for mineable quantities of high grade ore. The property was inactive until 1955 when Silver Standard dewatered and sampled the underground workings and undertook limited surface diamond drilling. In 1967 Seemar Mines carried out EM surveys on the property.

The ground is currently held by Canadian Superior Exploration Limited under option from the Short family of Colleymount.

Canadian Superior's 1975 work program involved geological mapping, 4 line miles of IP survey and 4 diamond drill holes totalling 1352 feet. Exploration has focused on a 150' wide quartz-carbonate alteration zone developed along a north trending fault in mesozoic volcanic rocks. Maps of underground workings indicate high grade quartz veins (assays up to 0.5 oz. Au/ton, 40 oz. Ag/ton) within the altered zone with the possibility of lower more pervasive values in the quartz-carbonate host rocks containing weakly disseminated pyrite, chalcopyrite, galena, sphalerite, tetrahedrite and arsenopyrite.

The zone dips  $45^{\circ}$  -  $50^{\circ}$  to the west and accordingly 4 drill holes were put down at 200' intervals, inclined  $45^{\circ}$  to the east. Three of the holes cut were altered rocks with negligible precious metal values and the fourth hole was stopped in overburden. Only the fourth hole was drilled after the claim anniversary dates of Richfield 1 - 4 and hence assessment is here applied for only on the basis of the latter 138' of drilling.

---



CANADIAN SUPERIOR EXPLORATION LIMITED  
SMITHERS REGIONAL OFFICE

TOPLEY RICHFIELD PROSPECT  
LOCATION MAP

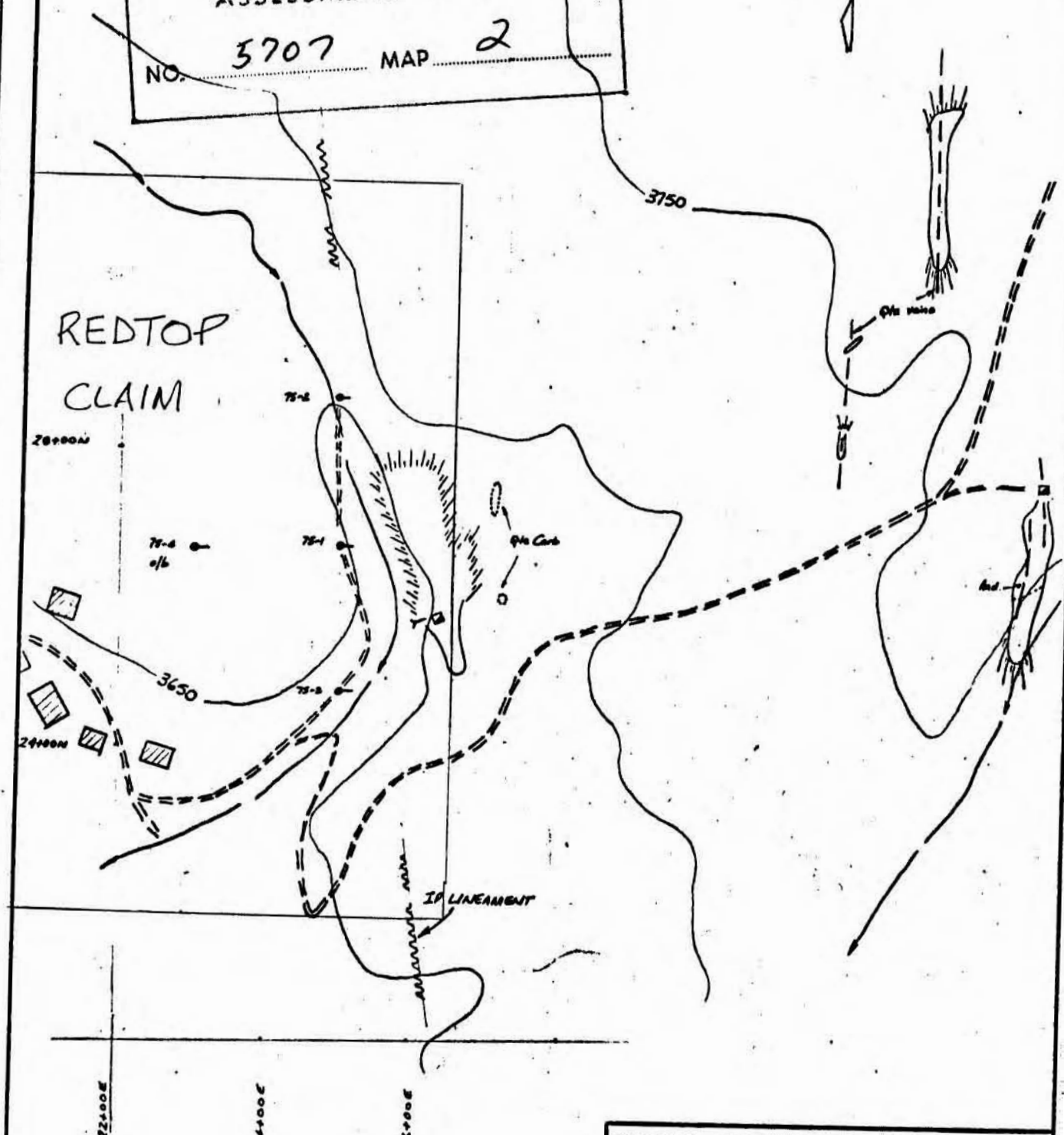
DRAUGHTSMAN: JB

SCALE: 1" = 1/2 M.

DATE: JULY 1975

Department of  
Mines and Petroleum Resources  
ASSESSMENT REPORT

NO. 3707 MAP 2



REDTOP  
CLAIM

CANADIAN SUPERIOR EXPLORATION LIMITED  
SMITHERS REGIONAL OFFICE

TOPLEY RICHFIELD PROJECT  
DRILL HOLE PLAN

DRAUGHTSMAN: JB | SCALE: 1"=200' | DATE: AUG/75

COST STATEMENT

In support of an Affidavit on Application to Record  
Work on Redtop and Richfield 1 - 4 Mineral Claims.

Costs incurred in diamond drilling on August 3, 1975

Diamond drilling (as per attached contract)	
138 ft. @ \$12.00 per foot	\$1,655.00

CERTIFICATE

I, John F. Baker, of the Town of Smithers do hereby certify that:

1. I am a geologist resident at Seymour Lake Road, Smithers.
2. I hold a B.Sc. degree in geology from the University of B.C. (1971)
3. I have been employed in the mining industry since 1965 and currently hold the position of Northern BC Exploration Manager for Canadian Superior Exploration Limited.
4. I personally supervised all work programs on the Topley Richfield property during 1975.

*John F. Baker*

John F. Baker

November 25, 1975

H. ALLEN DIAMOND DRILLING LTD.

TELEPHONE 378-4494

P.O. BOX 1397  
MERRITT, B.C.

CONTRACT - TOPLEY AREA

BETWEEN: CANADIAN SUPERIOR EXPLORATION LTD.,  
2201 1177 W. Hastings St.,  
Vancouver, B.C.

(Hereinafter referred to as the  
"COMPANY" of the First Part.)

AND: H. ALLEN DIAMOND DRILLING LTD.,  
Box 1397,  
Merritt, B.C.

(Hereinafter referred to as the  
"CONTRACTOR" of the Second Part.)

A. THE CONTRACTOR COVENANTS AND AGREES:

1. That all holes shall be drilled with BQ wireline equipment providing a core approximately 1 7/16" in diameter.
2. That the Contractor shall use his best endeavour to complete all holes according to the wishes of the Company, but should rock conditions prevent successful completion fo the hole, the Contractor is not obliged to complete the same, but shall be paid for such incomplete holes at contract rates for the completed footage.
3. Contractor supplies his own transportation and accomodation.
4. Contractor will supply water to the drill at his expense up to a distance of 2000 feet or vertical lift of 300 feet, supplying water beyond these limits to be negotiated.

B. THE COMPANY COVENANTS AND AGREES:

1. That payment for the herein described work shall be \$10.00 per foot for core drilling and \$12.00 per ft. for overburden.
2. Cementing drill holes will be charged to the Company at cost plus 10%. Cost of labour being union rates. Cost of equipment rental during cementing \$20.00 per day.
3. Casing which is non-recoverable charged to the Company.
4. Total moving cost will be \$300.00.
5. Contractor will supply a machine suitable for moving the drill and prepairing drill sites. Cost of this machine will be \$300.00 for the three holes.

IN WITNESS WHEREOF these presents have been executed by the parties hereto, this \_\_\_\_\_ day of \_\_\_\_\_ A.D. 1975.

Canadian Superior Exploration Ltd.

H. Allen Diamond Drilling Ltd.

Alan Baker  
\_\_\_\_\_

Herb Allen  
\_\_\_\_\_





**CANADIAN SUPERIOR EXPLORATION LIMITED**  
**DIAMOND DRILL RECORD**

HOLE NO: **75-3** page 2

LOCATION: \_\_\_\_\_

AZIMUTH: **90°**

PROPERTY: **TR, RICHFIELD, REDTOP**

**TOPLEY RICHFIELD PROJECT**

DIP: **-45°**      LENGTH: **407 FT**      ELEVATION: \_\_\_\_\_      CLAIM NO: \_\_\_\_\_

STARTED: \_\_\_\_\_      CORE SIZE: **BQ**      DATE LOGGED: \_\_\_\_\_      SECTION: \_\_\_\_\_

COMPLETED: \_\_\_\_\_      DIP TESTS: **✓**      LOGGED BY: **J. BAKER**

PURPOSE: \_\_\_\_\_      CONTRACTOR: **J.T. DIAMOND DRILLING**      CORE STORED AT **SMITHERS OFFICE**  
**(SUBCONTRACT FOR H. ALLEN)**

FOOTAGE		SILICA FERTILE SPHAL GALENA	DESCRIPTION	SAMPLE NO:	FOOTAGE		LENGTH	Cz. Au/ft.	Ass. Ys. Cz. Ag/ft.	% Zn				
from	to				from	to								
152	189		ANDESITE: Greenish aphanitic with occasional greyish sections $\leq$ 1 ft. Weakly silicified & epidotised Calcite strcs $\leq$ 6 ft. Tr. pyrite dissem.		150	160	10							
					160	170	10							
					170	180	10							
189	407		ANDESITE: Sim. to above section. 1' Qtz vein with cp, py, ZnS @ 262. White grt. 50% Core.		180	190	10							
					190	200	10							
					200	210	10							
					210	220	10							
			END OF HOLE.		220	230	10							
					230	240	10							
					240	250	10							
					250	260	10							
			HOLE SUMMARY:		260	270	10							
			Hole drilled between 2 underground levels		270	280	10							
			to test Qtz Carbonate zone. Recovery 290%.		280	290	10							
			80' Overburden, intersected altered zone @ 80'-100'		290	300	10							
			(upper section removed by erosion) Footwall 50'		300	310	10							
			Silicified andesite followed by epidotised andesite to top		310	320	10							
			Pyrite content of altered zone $\leq$ 3%.		320	330	10							
					330	340	10							
					340	350	10							
					350	360	10							
					360	370	10							
					370	380	10							
					380	390	10							
					390	400	10							
					400	407	7							

**CANADIAN SUPERIOR EXPLORATION LIMITED**  
**DIAMOND DRILL RECORD**

LOCATION: CSE GRID: 24+70 N 25+00 E  
OLD GRID: 9917 N 9783 E  
AZIMUTH: 90°

HOLE NO: 75-3 page 1

PROPERTY: TR, RICHFIELD, REDTOP

**TOPLEY RICHFIELD PROJECT**

DIP: -45°      LENGTH: 407 FT      ELEVATION: 3640 FT      CLAIM NO: RICHFIELD 4  
STARTED: AUG 1/75      CORE SIZE: BQ      DATE LOGGED: AUG 5/75      SECTION: 24+70 N  
COMPLETED: AUG 2/76      DIP TESTS: ✓      LOGGED BY: J. BAKER

PURPOSE: TEST QTZ CARB ZONE.      CONTRACTOR: J.T. DIAMOND DRILLING      CORE STORED AT SMITHERS OFFICE. 90% RECOVERY  
(SUBCONTRACT FOR H. ALLEN)      CASING REMOVED.

FOOTAGE		SILICA PYRITE SPHAL SULPH QUARTZ PYROPH	DESCRIPTION	SAMPLE NO:	FOOTAGE		LENGTH	ANALYSIS		
from	to				from	to		CL Au/ton	CL Ag/ton	% Zn
0	80		OVERBURDEN							
80	94		LIGHT GREEN QTZ CARBONATE: Banded mixture of Qtz/calcite/ankerite/pyrophyllite/sericite. Few gte fragments ± 2% pyrite dissem. Black streaks 1"-2" v.f.g. pyrite @ 2' intervals. Becoming gougy K 94'. Top 6" is brecciated mylonite cf. 75-1. Shearing @ 50'/core.	809 B	80	94	14			
94	96		FAULT GOUGE bordering QTZ VEIN: Gouge is black, clayey & pyritic with gte frags. 1/2" gte vein 1 1/2' ± 3% pyrite, Tr. 2AS, PIS, Cifer. Smoky grey colour & brecciated.	810 B	94	96	2			
96	100		SILICIFIED ZONE: Fairly uniform grey gte, with banded or texture locally preserved. ± 3% pyrite dissem & as discontinuous 1/8" str.	811 B	96	100	4			
			GRADATIONAL CONTACT: (Footwall of zone?)							
100	120		SILICIFIED ANDESITE: Mottled brown to greenish. Generally aphanitic. ± 1% pyrite dissem & infrequent str. Calcite &/or gte str. @ 4'/ft. Mod - strongly epidotised.	813	100	120	10			
120	142		SILICIFIED ANDESITE: Pale grey-brown. More pervasively silicified than previous section. Cut by 1/8" gte str ± 10'/ft (white barren gte) ± 0.5% pyrite dissem	814 815	120 130	130 142	10 12			
142	152		CARBONATISED & SILICIFIED ANDESITE: Mottled brownish to greenish to brown with white chalky phreocysts.	816 B	142	150	8			



**CANADIAN SUPERIOR EXPLORATION LIMITED**  
**DIAMOND DRILL RECORD**

HOLE NO: **75-2 page 4**

LOCATION: \_\_\_\_\_  
AZIMUTH: **90°**

PROPERTY: **TR, RICHFIELD, REDTOP**

**TOPLEY RICHFIELD PROJECT**

DIP: **-45°**      LENGTH: \_\_\_\_\_      ELEVATION: \_\_\_\_\_      CLAIM NO: \_\_\_\_\_  
STARTED: \_\_\_\_\_      CORE SIZE: **BQ**      DATE LOGGED: \_\_\_\_\_      SECTION: \_\_\_\_\_  
COMPLETED: \_\_\_\_\_      DIP TESTS: **/**      LOGGED BY: **J. BAKER**  
PURPOSE: \_\_\_\_\_      CONTRACTOR: **J.T. DIAMOND DRILLING**      CORE STORED AT **SATHERS OFFICE**  
**(SUBCONTRACT FOR H. ALLEN)**

FOOTAGE from	to	SILICA PYRITE SULPHIDE SULPHATE OXIDES	DESCRIPTION	SAMPLE NO:	FOOTAGE		LENGTH	ASSAYS		
					from	to		Gr. Au/ton	Gr. Ag/ton	% Zn
283	295		SILICIFIED ZONE: v similar to 242-265 Pervasive silicification - mainly dusty grey qtz with ± 2% pyrite dissem. & discontinuous str.	802 B	283	288	5			
	295		CONTACT: Sharp @ 50°/Core.	803	288	295	7			
295	298		FAULT GOUGE: Clayey black pyritic. bordering 1" qtz vein with 5% pyrite. Fragments of green qtz carb. & pyrophyllite.	804	295	298	3			
298	303		SILICIFIED MYLONITISED ANDESITE: light brown to greenish colour. ± 1% pyrite as streaks & dissem. Few narrow qtz str. Foliation @ 70°-80°/Core.	805	298	303	5			
	303		CONTACT: Fairly sharp @ 50°/Core.							
303	309		QTZ VEIN: White qtz. ± 4% pyrite as blebs ≤ 1/4". No cleftal or. (late stage (not brecciated))	806	303	309	6			
	309		CONTACT: Sharp @ 50°/Core.							
309	312		SILICIFIED & CARBONATISED ANDESITE: light brown to greenish becoming dark green to 312. Wk pyrite dissem. FOOTWALL OF MINERALISED ZONE.	807	309	312	3			
312	370		ANDESITE: dark green aphanitic. Few qtz str with pyrite (≤ 1/4") ± 0.5% pyrite dissem. Mod epidote. 1' silic. zone bordering 2" qtz str with pyrite @ 340'		322	332	10			
					322	342	10			
370	380		SILICIFIED ANDESITE: Pale grey colour silic. as qtz flooding & qtz str (≤ 6/4") ± 1% pyrite dissem 2" qtz vein with pyrite @ 376 (50°/core) + ep.		342	352	10			
					352	362	10			
					362	372	10			
					372	382	10			
					382	392	10			
					392	407	11			



## CANADIAN SUPERIOR EXPLORATION LIMITED

## DIAMOND DRILL RECORD

HOLE NO:

75-2 page 2.

LOCATION:

AZIMUTH: 90°

PROPERTY: TR, RICHFIELD, REDTOP

## TOPLEY RICHFIELD PROJECT

DIP: -45°

LENGTH:

ELEVATION:

CLAIM NO:

STARTED:

CORE SIZE: BQ

DATE LOGGED:

SECTION:

COMPLETED:

DIP TESTS: /

LOGGED BY: J. BAKER

PURPOSE:

CONTRACTOR: J.T. DIAMOND DRILLING

CORE STORED AT SMITHERS OFFICE

(SUB CONTRACT FOR H. ALLEN)

FOOTAGE from	to	DIAM. LOG CORRECTION CORRECTION CORRECTION	DESCRIPTION	SAMPLE NO:	FOOTAGE		LENGTH	ANALYSIS		
					from	to		Gr. Au/ft	Gr. Ag/ft	% Zn
135	145		SILICIFIED ZONE: Mottled light brown to purplish Qtz/dol/fankelite. Mod. grt str @ 50° Core Pyrite 0.5% as dissem & along grt str. White grt.	783 B	135	143	8			
				784	143	155	12			
145	165		FAULT GOUGE: Friable dark grey laminated intensely carbonatised - Calcite. No visible pyrite.	785	155	165	10			
165	175		MYLONITE: (similar to top of 75-1) Sheared & carbonatised andesite. Laminated texture. Increasingly silicified & brecciated to 175. Light tan - mottled pinkish colour. Loc. reticulated pattern of black hairline fractures (hematite) Tr. pyrite dissem.	786	165	175	10			
				787	175	185	10			
				788	185	195	10			
175	202		SILICIFIED & BRECCIATED MYLONITE: Tan coloured Qtz/alk. Well developed mylonitic texture @ 50° Core. loc. 90° Core Vein grt fragments more common to 202. ± 1% pyrite as dissem grains particularly assoc. with grt frags. Tr. Arsenopyrite.	789	175	202	7			
	202		CONTACT: sharp @ 70° Core.							
202	205		LIGHT GREEN QTZ CARBONATE: Qtz/calcite/fankelite pyrophyllite mixture. ± 3% pyrite dissem Qtz veinlets/py str 1/ft @ 60° Core	790	202	205	3			
				791	205	215	10			
	205		CONTACT: sharp @ 90° Core.							
205	221		SILICIFIED ZONE: 90% silica as diffuse veinlets & smoky grt flooding. Pyrite ± 5% as str. ≤ 1/8" & dissem. Some fragments ≤ 3" of green grt carbonate. locally pyrite blebs ≤ 2" are brecciated.	792 B	215	221	6			
	221		GRADATIONAL CONTACT.							

CANADIAN SUPERIOR EXPLORATION LIMITED  
DIAMOND DRILL RECORD

HOLE NO: 75-2 page 1

LOCATION: C.S.E GRID: 28+70N 25+00E  
OLD GRID : 10317N 9783E  
AZIMUTH: 50°

PROPERTY: TR, RICHFIELD, REDTOP

TOPLEY RICHFIELD PROJECT

DIP: -45°      LENGTH: 407 FT      ELEVATION: 3650 FT      CLAIM NO: RICHFIELD 4  
STARTED: JULY 30/75      CORE SIZE: BQ      DATE LOGGED: AUG 4/75      SECTION: 28+70 N  
COMPLETED: AUG 1/75      DIP TESTS: /      LOGGED BY: J. BAKER

PURPOSE: TEST QTZ CARB. ZONE      CONTRACTOR: J.T. DIAMOND DRILLING      CORE STORED AT SMITHERS OFFICE. 90% recovery  
(SUB CONTRACT FOR H. ALLEN)      CASING REMOVED.

FOOTAGE		SILICA PYRITE SERPENTINE SULPHIDE	DESCRIPTION	SAMPLE NO:	FOOTAGE		LENGTH	ASSAYS		
from	to				from	to		Cz. Au/ton	Cz. Ag/ton	% Zn
0	72		OVERBURDEN							
72	74		FAULT GOUGE: Friable dk grey weak-mod. silicification ± 0.5% pyrite dissem	775 B	72	80	8			
74	85		LIGHT GREEN QTZ CARBONATE: Qtz/fankelite/calcite mixture. wk qtz str 1/8". ± 1% pyrite dissem & along qtz str minor pyrophyllite.	776	80	85	5			
85	86		FAULT GOUGE: black clayey.	777	85	96	11			
86	105		CARBONATISED ANDESITE: dictyonitic texture. Reddish Qtz/dolomite mixture, becoming pervasively silicified to 105 Local vuggy calcite veinlets. Weakly brecciated & veined with white barren qtz str ± 0.5% pyrite as str with minor intergrown Arsenopyrite.	778	96	105	9			
	105		GRADATIONAL CONTACT.	779	105	115	10			
105	121		QTZ CARBONATE: Dark green qtz/fankelite/calcite with black streaks @ 50° core of hematite. Local silicification as v. diffuse veinlets. Tr. pyrite dissem.	780	115	121	6			
	121		GRADATIONAL CONTACT.							
121	127		SILICIFIED ZONE: (pos corr. with 75-1, 94-105) Mottled pinkish & white qtz/dolomite/fankelite. Streaks of hematite locally. Mod increase in pyrite dissem to 0.5%. Silicification of white qtz (barren) variety	781	121	127	6			
	127		GRADATIONAL CONTACT.							
127	135		CARBONATISED ANDESITE: Dark grey with whitish dictyonitic texture. No visible pyrite.	782	127	135	8			
	135		GRADATIONAL CONTACT.							



**CANADIAN SUPERIOR EXPLORATION LIMITED**  
**DIAMOND DRILL RECORD**

HOLE NO: **75-1 page 4.**

LOCATION: \_\_\_\_\_  
AZIMUTH: **90°**

PROPERTY: **TR, RICHFIELD, REDTOP**

**TOPLEY RICHFIELD PROJECT**

DIP: **-45°**      LENGTH: \_\_\_\_\_      ELEVATION: \_\_\_\_\_      CLAIM NO: \_\_\_\_\_  
STARTED: \_\_\_\_\_      CORE SIZE: **BQ**      DATE LOGGED: \_\_\_\_\_      SECTION: \_\_\_\_\_  
COMPLETED: \_\_\_\_\_      DIP TESTS: **/**      LOGGED BY: **J. BAKER**

PURPOSE: \_\_\_\_\_      CONTRACTOR: **J.T. DIAMOND DRILLING**      CORE STORED AT **SMITHERS OFFICE**  
**(SUB CONTRACT FOR H. ALLEN)**

FOOTAGE from	to	SILICA PYRITE SPHAL GALENA	DESCRIPTION	SAMPLE NO:	FOOTAGE		LENGTH	ANALYSIS		
					from	to		oz Au/ton	oz Ag/ton	% Zn
322	340		EPIDOTISED ANDESITE TUFF; F.g dark green tuff		310	320	10			
			Tr. pyrite.		320	330	10			
340	376		WEAKLY EPIDOTISED ANDESITE BRECCIA: As in 240-322		330	340	10			
			Tr pyrite. Locally weakly silicified. 4" Qz vein @ 373'		340	350	10			
			with 1" silicified border.		350	360	10			
376	400		ANDESITE BRECCIA: Dk green as in 240-322		360	370	10			
			Slight increase in pyrite as diam & along qtz str		370	380	10			
			< 2 ft.		380	390	10			
			END OF HOLE		390	400	10			
<p><b>HOLE SUMMARY:</b> HOLE drilled between 2 underground levels to sample qtz carbonate zone &amp; locate mineralised rx type. Recovery &gt;90%, drilled with mud in upper section. Collared in shear zone @ 70', entered qtz carbonate zone 109-187 with several narrow qtz veins (brecciated). Footwall Andesite epidotised &amp; silicified (later a narrow margin to qtz carb. zone). Pyrite in Qz carb zone 1-5%, correlating well with pyrophyllite distribution - possible indicators. Pb, S, Zn, Ag, Fe, As present in amounts ≤ 0.5%, particularly in Qz veins. Hanging wall has not been located. Possible mineralised zone 71' thick.</p>										

**CANADIAN SUPERIOR EXPLORATION LIMITED**  
**DIAMOND DRILL RECORD**

HOLE NO: **75-1 page 3.**

LOCATION: \_\_\_\_\_  
AZIMUTH: **90°**

PROPERTY: **TR, RICHFIELD, REDTOP**

**TOPLEY RICHFIELD PROJECT**

DIP: **-45°**      LENGTH: \_\_\_\_\_      ELEVATION: \_\_\_\_\_      CLAIM NO: \_\_\_\_\_  
STARTED: \_\_\_\_\_      CORE SIZE: **BQ**      DATE LOGGED: \_\_\_\_\_      SECTION: \_\_\_\_\_  
COMPLETED: \_\_\_\_\_      DIP TESTS: **/**      LOGGED BY: **J. BAKER**

PURPOSE: \_\_\_\_\_      CONTRACTOR: **J.T. DIAMOND DRILLING**      CORE STORED AT **SMITHERS OFFICE**  
**(SUB CONTRACT FOR H. ALLEN)**

FOOTAGE from	to	SILICA PYRITE SPHAL CALCITE PYRPH.	DESCRIPTION	SAMPLE NO:	FOOTAGE		LENGTH	ASSAYS		
					from	to		Gr. Au/ft	Gr. Ag/ft	% Zn
163	187		LIGHT GREEN QZ CARBONATE: As in 134-139. ± 2% disseminated pyrite, 0.5% dissem. ZnS. Pyrophyllite abundant but not evident below 187. Rc is weakly banded mixture of Silica/dolomite/calcite/sericite. Shearing @ 70°/Core.	769 B	168	176	8			
	187		Limonic FAULT CONTACT (Footwall or Auq zone?)	770	176	187	11			
187	197		SILICIFIED ANDESITE: Peruasively silicified with patchy biotitic areas appearing towards 197. Mod. qtz strs 1/8" ± 0.5% pyrite dissem. Light Tan to mottled brown.	771	187	197	10			
	197		GRADATIONAL CONTACT:							
197	207		CARBONATISED & SILICIFIED ANDESITE: biotitic mottled brown & green colour Epidotised Dolomite strs 4/ft. Tr. pyrite. Dominant veinlet/shear attitude 50°/Core.	772	197	207	10			
207	219		SILICIFIED ANDESITE: White to brown & cut by numerous dolomite veinlets 1/8". Tr. pyrite dissem.	773	207	219	12			
219	240		SILICIFIED & EPIDOTISED ANDESITE: Blotchy white & green becoming dark green to 240. Feldspar porphyry fragments 219-229. Abundant epidote strs. ± 2% pyrite as dissem & with epidote & for calcite strs. Tr. ZnS (ruby colour) in qtz epidote stringer.	774	219	229	10			
					229	240	11			
240	322		EPIDOTISED ANDESITE BRECCIA: Fg dk green matrix with 2-4" frags. of andesite porphyry flow. Epidote as stringers & patches, decreasing towards 322. Pyrite decreasing from 170 - Tr. to 300'.		240	250	10			
					250	260	10			
					260	270	10			
					270	280	10			
	322		QZ VEIN: 4" wide with 1" silicified margin		280	290	10			
					290	300	10			
					300	310	10			



CANADIAN SUPERIOR EXPLORATION LIMITED  
DIAMOND DRILL RECORD

HOLE NO: 75-1 page 1

LOCATION: C.S.E GRID : 26+70 N 25+00 E  
OLD GRID: 10117 N 9783 E  
AZIMUTH: 90°

PROPERTY: TR, RICHFIELD, REDTOP

TOPLEY RICHFIELD PROJECT

DIP: -45° LENGTH: 400 FT ELEVATION: 3650 FT CLAIM NO: RICHFIELD 4  
STARTED: JULY 28/75 CORE SIZE: BQ DATE LOGGED: JULY 31/75 SECTION: 26+70 N.  
COMPLETED: JULY 30/75 DIP TESTS: / LOGGED BY: J. BAKER

PURPOSE: TEST QTZ CARB ZONE. CONTRACTOR: J.T. DIAMOND DRILLING (SUB CONTRACT FOR H. ALLEN) CORE STORED AT SMITHERS OFFICE, 70% RECOVERY CASING REMOVED

FOOTAGE		SILICA PYRITE SPHALERITE GALENA	DESCRIPTION	SAMPLE NO:	FOOTAGE		LENGTH	CZ. Au/oz	ANALYS. (BANDER CUEGG FIRE ARMS)		
from	to				from	to			CZ. Ag/oz	% Zn	
0	70		OVERBURDEN.	751 B	70	77	7				
70	84		MYLONITE - SHEAR ZONE : laminated & mottled dark grey to purplish. Calcite & lesser qtz matrix. Calcite str. 1/8"-1/4" @ 25' core, locally vuggy. Laminae 50' core. Tr. pyrite dissem & increasing silicification to 84'.	752	77	84	7				
	84		FAULT CONTACT - 55° core, very sharp.								
84	90		SILICIFIED FAULT BRX. : Mylonite fragments angular to partially absorbed. Pervasive silicification & carbonatization. Tr. pyrite dissem. & unident. black min. (hematite?) as 1/8" streaks. Locally vuggy calcite veinlets. White quartz.	753	84	90	6				
	90		CONTACT								
90	94		MYLONITE : as in 70-84, stronger silicification as diffuse zones partic. where brecciated. Tr. py dissem & along qtz str. Increasing silic. to 94.	754	90	94	4				
	94		GRADATIONAL CONTACT.	755	94	100	6				
94	105		BRECCIATED MYLONITE : Pervasively silicified, light tan colour. Mod. dissem pyrite. Vuggy calcite veinlets.	756	100	105	5				
	105		GRADATIONAL CONTACT								
105	109		QTZ-CARBONATE BRECCIA : Mottled light tan colour. Qtz/dolomite/calcite matrix & pervasively altered frags. Mod. (11%) pyrite as dissem. & as matrix to f.g. breccias. Tr. ZnS as intergrowths with pyrite. Tr. v.f.g. tetrahedrite(?)	757	105	109	4				
	109		CONTACT								
109	114		QTZ-CARBONATE : light green to gray with reticulated pattern of black hairline fractures (hematite?) Mod. dissem pyrite. Slight decrease in silica content.	758 B	109	114	5				