

5728

TOMBILL MINES LIMITED and  
PORCHER ISLAND GOLD MINES LTD.

JOINT VENTURE

EDYE PASS MINE  
SKEENA MINING DIVISION, B.C.

REPORT ON DIAMOND DRILLING

By G. B. Douglas

NOVEMBER, 1975

Department of  
Mines and Petroleum Resources  
ASSESSMENT REPORT  
NO. 5728 MAP

TABLE OF CONTENTS

	Page
INTRODUCTION.....	1
SUMMARY.....	1
MINERAL CLAIMS.....	2
OWNERSHIP.....	2
ACCESS.....	3
GENERAL GEOLOGY.....	3
DIAMOND DRILLING.....	5

LIST OF TABLES

TABLE 1	Summary of Diamond Drilling.....	5
---------	----------------------------------	---

LIST OF FIGURES

1	FIGURE 1	Index Map Showing Location of Claims.....	4
2	FIGURE 1A	<i>PROPERTY LOCATION</i>	
3	FIGURE 2	Plan Showing the Location of the Diamond Drill Holes in Relation to the Underground Workings of the Surf Point and Edye Pass Mines.....(IN POCKET)	
4	FIGURE 3	Plan Showing the Location of the Diamond Drill Holes and Intersections.....(IN POCKET)	
5	FIGURE 4	Plan View: Diamond Drill Hole 75-7.....(IN POCKET)	

APPENDIX

- APPENDIX 1 - Diamond Drill Logs
- APPENDIX 2 - Diamond Drill Contract
- APPENDIX 3 - Cost Summary

## INTRODUCTION

This report concerns an underground diamond drilling programme carried out on the Porcher Island Gold Mines property situated between Useless Point and Edwin Point on Porcher Island. The property consists of 6 crown granted mineral claims and 4 located mineral claims in a contiguous group covering the now defunct Edye Pass and Surf Point Mines. Tombill Mines Limited and Porcher Island Gold Mines Ltd. entered into a joint venture agreement in which the former agreed to investigate the feasibility of re-opening the old mines.

## SUMMARY

Porcher Island Gold Mines brought this property to the attention of Tombill Mines Limited and suggested that the Surf Point ore zones may extend downwards to the Edye Pass level. This hypothesis was supported by sections published by Alexander Smith (Bulletin of the Geological Society of America, Vol. 58, pp 245-262, March, 1947) and Tombill agreed to carry out the diamond drill programme.

During the period September 18th to October 4th, 1975 mobilization, setting up camp, cleaning out the adit and setting up support services was carried out. Drilling commenced October 5th and continued until October 25th, 1975 with a total of 736.57 meters completed at a cost of \$86,898.18 or \$117.98 per meter. Demobilization was completed on October 31st, 1975.

MINERAL CLAIMS

The Porcher Island Gold Mines Ltd. property consists of 6 crown granted mineral claims and 4 located mineral claims forming a contiguous group. The crown granted mineral claims are:-

- |                    |                          |
|--------------------|--------------------------|
| 1. Trixie Lot 6515 | 4. Western Hope Lot 6516 |
| 2. Reward Lot 6955 | 5. Jeanie Lot 7191       |
| 3. Pirate Lot 6953 | 6. Nabob Lot 7192        |

and the 4 located mineral claims are:-

- |                   |                  |
|-------------------|------------------|
| 1. Toby 1 385809M | 3. Tippy 385811M |
| 2. Toby 2 385810M | 4. Kerry 385812M |

recorded May 1st, 1974 at Prince Rupert.

OWNERSHIP

The 4 located mineral claims (Toby 1, Toby 2, Tippy and Kerry) are registered in the name of Porcher Island Gold Mines Ltd.

Porcher is the owner of the 4 crown granted mineral claims Pirate (Lot 6953), Reward (Lot 6955), Jeanie (Lot 7191) and Nabob (Lot 7192) and has a 75% interest in the 2 crown granted mineral claims Trixie (Lot 6515) and Western Hope (Lot 6516) and holds an option to purchase the remaining 25% interest in the latter two claims from A.M. Woodworth of Victoria, B.C.

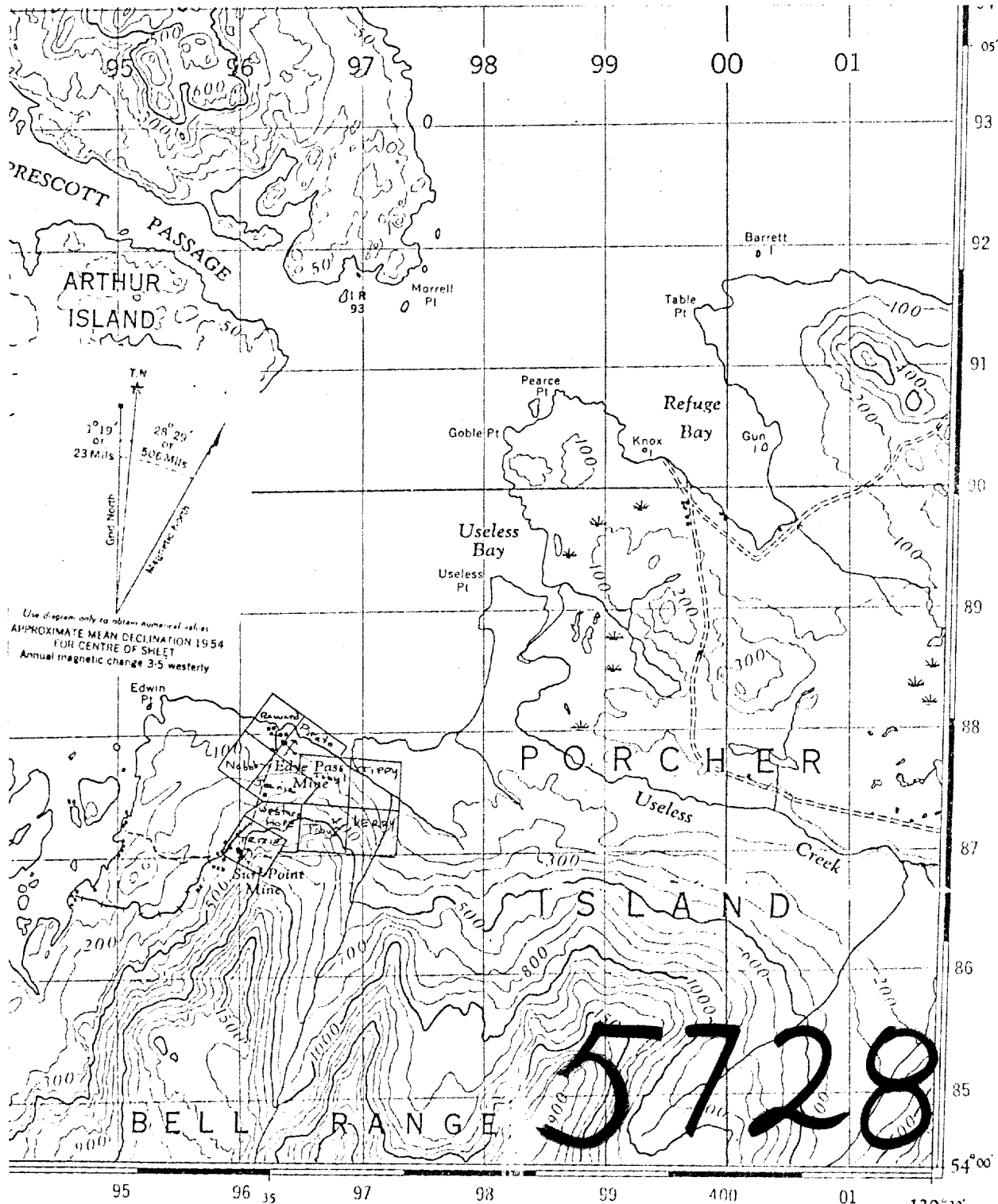
### ACCESS

Porcher Island is located in the mining district of Skeena and lies approximately 27 miles southwest of Prince Rupert, B.C. The Ede Pass and Surf Point Mines are located on NTS SHEET 103 J/2 (east half) at  $54^{\circ} 02'N$  and  $130^{\circ} 35'W$  (Figure 1) and are readily accessible by float equipped aircraft or barge/tug service available in Prince Rupert.

### GENERAL GEOLOGY

Extensive geological mapping on the property was carried out by Smith (1947) and is readily available. The gold deposits occur in  $N20^{\circ}E$  trending auriferous quartz-pyrite veins within a quartz diorite stock which intrudes the Prince Rupert schists. Both the stock and the schists have been intruded by basalt dykes. A hornblende porphyry dyke intrudes the stock and may be related to the basalt dykes.

Quartz veins are numerous and scattered throughout the property. The veins tend to pinch and swell and the amount of pyrite mineralization is highly variable. Occasional specks of chalcopyrite were noted in some sections of the core.



Use diagram only to obtain numerical values  
 APPROXIMATE MEAN DECLINATION 1954  
 FOR CENTRE OF SHEET  
 Annual magnetic change 3.5 westerly

SCALE 1:50,000



M-1

TOMBILL MINES LTD  
 PORCHER ISLAND GOLD MINES LTD  
 JOINT VENTURE  
 PORCHER ISLAND, B.C.

Fig. 1 INDEX MAP SHOWING LOCATION OF CLAIMS

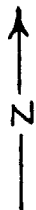
Compiled By: G. Douglas Nov 14, 1975

STEPHENS ISLAND

103 1/2 EAST HALF  
 SECOND EDITION

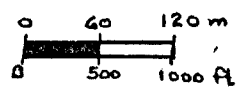
EDGE PASSAGE

SURF POINT



Department of  
 Mines and Petroleum Resources  
 ASSESSMENT REPORT

NO. 5728 MAP 2



--- underground workings  
 o Diamond drill hole # No

TOMBILL MINES LTD PORCHER ISLAND GOLD MINES LTD JOINT VENTURE	
PROPERTY LOCATION	
PORCHER ISLAND, BRITISH COLUMBIA	
MHP No 2	GR 23-6-75
REVISED NOV 25, 1975 G.D.	

F15. 1A



DIAMOND DRILLING

Eight holes were drilled from the Edge Pass adit to test the downward extension of the Surf Point structures. In all, 736.57 meters (2,416 feet) of AQ diamond drilling was completed. A summary of this drilling is presented in Table 1.

TABLE 1

SUMMARY OF DIAMOND DRILLING

	<u>AZIMUTH</u>	<u>LENGTH</u>
75-1	195°	79.91
75-2	163°	77.47
75-3	195°	147.01
75-4	195°	130.54
75-5	180°	68.02
75-6	147°	75.64
75-7	175°	47.27
75-8	206°	110.71
		<hr/>
		736.57 M

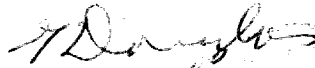
For all holes inclination is 0° and core diameter is 27mm (AQ).

Figure 2 shows the configuration of the underground workings of the two mines and the position of the drill holes at a scale of 1:600. Maps at a scale of 1:250 show the intersections and are presented in Figures 3 and 4.

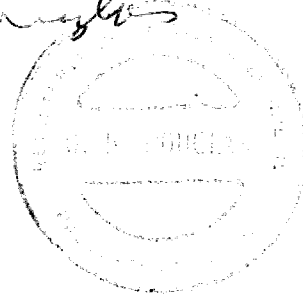
All labour and drilling was performed by Connors Drilling of Vancouver, B.C. under the direction of Mr. F. Boisvenue. Tombill Mines Limited of Toronto acted as managers of the drilling programme and provided supervisory personnel.

Diamond drill logs, the drilling contract and costs are presented in appendicies 1, 2 and 3 respectively.

Respectfully submitted



G. Douglas



QUALIFICATIONS OF SUPERVISORY

PERSONNEL EMPLOYED AT

PORCHER ISLAND GOLD MINES LIMITED PROPERTY

PORCHER ISLAND, B.C.

1975

GREGORY BRUCE DOUGLAS

1965-1970 QUEEN'S UNIVERSITY  
Graduated with B.Sc. (Eng.) in Geological Sciences  
in 1970

Summer employment 1965-1970

1968 GEOLOGICAL SURVEY OF CANADA  
attached to Limnogeological Section  
Canada Centre for Inland Waters,  
Burlington, Ontario - mapping.

1969 GEOLOGICAL SURVEY OF CANADA  
Pleistocene Stratigraphy

1970-1971 HUDSON BAY EXPLORATION & DEVELOPMENT CO., LIMITED  
Toronto, Ontario. Geological mapping, geochemical  
surveys, geophysical surveys, drilling supervision  
in field camps in Ontario and Quebec.

1971-1973 McMASTER UNIVERSITY  
Graduated with M.Sc. in Geology in 1974.

Summer employment 1973

ONTARIO DIVISION OF MINES -  
geological mapping

1974 - present ANGLO AMERICAN CORPORATION OF CANADA LIMITED  
Toronto, Ontario. Field geologist -  
supervision of diamond drilling and ground  
surveys, property examinations.

APPENDIX I

TOMBILL MINES LIMITED

Page 1 of 5.

PROJECT: TOMBILL/PORCHER ISLAND GOLD MINES LTD.

HOLE NO.: 75-1 DEPTH: 79.91M CORE SIZE: AQ DIRECTION: 195° INCLINATION: 0° CLAIM NO.: TRIXIE,  
LOT 6515

STARTED: October 5, 1975 FINISHED: October 7, 1975

LOGGED BY: G. Douglas DATE: October 9, 1975

LOCATION:- EDYE PASS ADIT, Latitude 5072.6N Departure 5029.1E

## NOTE - MEASUREMENTS IN METRIC UNITS

FROM	TO	DESCRIPTION
0	79.91	QUARTZ DIORITE, massive, medium grained, 15% biotite, 5% epidote, 25% quartz, balance feldspars. Medium dark grey to dark grey in colour (N3.5). Several greenish black to dark grey (N2.5) mafic inclusions (2-10cm) scattered throughout the section - reported to be normal quartz diorite and the host rock tonalite (Smith, 1947). Some inclusions are epidotized strongly and gives the inclusion a greyish olive green colour (5GY 3/2)
		2.19-2.45 siliceous section, light grey in colour (N7), about 1% pyrite
		2.61-2.64 quartz stringer, 25% pyrite at core angle 65°
		2.71-2.76 barren quartz stringer
		2.76-2.84 quartz stringer - 1% disseminated pyrite
		3.36-3.37 barren quartz stringer; trace disseminated pyrite in host diorite around contacts
		6.30-6.33 barren quartz stringer

FROM	TO	DESCRIPTION
		9.85-11.21 silicified zone.
		10.62-10.64 quartz vein
		10.88-11.21 partially absorbed breccia of diorite in
		quartz vein about 1% pyrite and generally
		along contact of breccia
		17.32-17.36 quartz stringer, trace pyrite, contacts
		indistinct
		18.60-18.62 quartz stringer, trace pyrite, contacts
		indistinct
		21.08-21.16 silicified zone, trace disseminated pyrite,
		indistinct contacts
		21.32-21.42 silicified zone, trace disseminated pyrite
		indistinct contacts
		22.0-22.05 25% quartz - 75% pyrite stringer at
		core angle 65°
		22.60-22.65 quartz stringers at core angle 65°, trace
		pyrite at contacts



FROM	TO	DESCRIPTION
		26.23-26.25 quartz stringer, trace pyrite
		26.28-26.29 quartz stringer, trace pyrite
		27.32-27.51 quartz vein, 1% disseminated pyrite, chlorite stringers
		27.51-27.64 silicified
		27.90-27.91 quartz stringer at core angle 55°
		29.61-29.62 quartz stringer at core angle 65°, trace pyrite
		30.19-30.20 quartz (60%) vein, 30% biotite, 10% pyrite, fine grained, core angle at 35°
		30.20-30.31 silicified zone, trace disseminated pyrite
		35.92-36.77 silicified zone, 1-2% disseminated pyrite, light grey (N6) in colour, generally all biotite altered to chlorite - no epidote present.
		37.87-37.92 barren bull quartz vein, coarse grained
		37.92-38.92 (estimated) mud seam
		38.92-39.04 barren bull quartz vein

FROM	TO	DESCRIPTION	
		39.81-39.82 barren bull quartz vein at core angle 30°	
		41.8 core angle (joints) at 30°	
		41.97-42.10 silicified zone 1% - 2% pyrite	
		42.33-42.47 " " " "	
		54.9 core angle (joints) at 40°	
		63.0-63.36 shear zone - foliation at core angle 40°, fairly well developed marbled appearance	
		63.96-63.97 barren quartz stringer	
		66.565-66.57 quartz stringer, trace pyrite	
		66.63-66.64 barren quartz stringer	
		67.34-67.35 quartz stringer, trace pyrite	
		68.425-68.43 " " " "	
		68.49-68.50 " " " "	
		71.15-71.60 shear zone - weak foliation at core angle 40°	
		73.57-73.58 barren quartz stringer at core angle 90°	
		79.91 END OF HOLE	
		TROPARI TEST AT 250' (76.25M), BRG 194° True (167° Mag)	

INCLINATION -2°

PROJECT: TOMBILL MINES LIMITED/PORCHER ISLAND GOLD MINES LTD.

HOLE NO.: 75-2   DEPTH: 77.47M   CORE SIZE: AQ   DIRECTION: 163°   INCLINATION: 0°   CLAIM NO.: TRIXIE,  
LOT 6515

STARTED: October 8th, 1975   FINISHED: October 10th, 1975

LOGGED BY: G. Douglas   DATE: October 13, 1975

LOCATION:- EDYE PASS ADIT, Latitude 5089N Departure 5035E

## MKS UNITS

FROM	TO	DESCRIPTION
0	77.47	QUARTZ DIORITE, Massive, some sections with slight gneissosity, medium grained, 15% biotite, 5-10% epidote, 25% quartz, balance feldspars, medium dark grey to dark grey in colour (N3.5). Epidotized inclusions fairly common - greyish olive green in colour (5GY 3/2)
		15.43-15.44 silicified, trace pyrite
		16.0 core angle (joints) at 45°
		16.21-16.22 quartz stringer
		18.21 - 18.23 quartz stringer, trace pyrite
		21.90-21.95 quartz stringer, indistinct contacts, trace pyrite
		23.28-23.37 quartz vein, 1% pyrite
		25.92-26.07 quartz vein, 2% pyrite
		26.25-26.26 quartz stringer, 5% pyrite
		26.86-26.94 quartz vein, 5% pyrite
		28.46-28.47 fine grained quartz-biotite stringer, trace pyrite, core angle L.C. at 50°

HOLE NO.: 75-2

Page 3 of 4.

MKS UNITES

FROM	TO	DESCRIPTION
		30.50-30.52 quartz stringer at core angle 55°, trace
		pyrite above upper contact (U.C.) and below
		lower contact (L.C.)
		32.07-32.12 barren bull quartz stringer
		35.65-35.71 chlorite quartz stringer, trace pyrite
		38.69-38.78 barren bull quartz vein
		38.78-39.10 siliceous zone - barren
		41.46-41.47 quartz stringer
		41.79-42.03 silicified quartz diorite
		46.1 core angle (joints) at 55°
		48.18-48.23 quartz stringer, trace pyrite
		49.77-49.79 quartz stringer
		52.80-52.98 quartz-epidote (zoisite) vein, zoisite-
		acicular crystals, striated, brittle, apple green
		colour
		53.65-54.29 metasomatized and epidotized zone-barren,
		calcite, very soft

HOLE NO.: 75-2

Page 4 of 4.

FROM	TO	DESCRIPTION
		55.27-55.38 silicified epidotized zone
		56.61-56.63 quartz stringer
		65.15-65.16 zoisite stringer
		67.34 core angle joints at 65°
		67.58-68.06 silicified zone
		69.26-69.95 silicified and epidotized zone
		69.34-69.37 quartz stringer barren
		69.84-69.86 quartz stringer barren
		77.47 END OF HOLE
		TROPARI TEST            73M
		AZIMUTH            READ 129°    CORRECTED 156°
		DIP                -1°

TOMBILL MINES LIMITED

Page 1 of 7.

PROJECT: TOMBILL/PORCHER ISLAND GOLD MINES LTD.

HOLE NO.: 75-3 DEPTH: 147.01 CORE SIZE: AQ DIRECTION: 195° INCLINATION: 0° CLAIM NO.: TRIXIE  
LOT 6515

STARTED: October 11, 1975 FINISHED: October 15th, 1975

LOGGED BY: G. Douglas DATE: October 17th, 1975

SAMPLED BY: K. Taylor

LOCATION:- EDYE PASS ADIT, Latitude 5087.1N Departure 5011.8E

HOLE NO.: 75-3

ALL DISTANCES IN LOG ARE IN MKS UNITS

FROM	TO	DESCRIPTION
0	147.01	QUARTZ DIORITE-massive, medium grained, 15-20% biotite, %5 epidote, 25% quartz, and feldspar, medium dark grey to dark grey (N3.5), greenish black to dark grey (N2.5), xenoliths scattered throughout. Occasional trace pyrite, quartz, quartz-carbonate stringers, silicified sections and metasomatized zones 2.41-2.42 quartz stringers 2.56-2.57 quartz-carbonate stringer at core angle 60° - 5% pyrite at U.C. and L.C. in diorite 2.60 core angle (joints) at 50° 3.09-3.095 quartz stringer at core angle 20° 11.43-11.46 quartz stringer 10% pyrite → seam (1mm) conductive 12.02-12.03 quartz stringer 12.68-12.78 quartz vein, 1% pyrite 13.02-13.025 quartz stringers 13.83-14.35 silicified (slightly), trace pyrite



HOLE NO.: 75-3

FROM	TO	DESCRIPTION	
		13.84-13.85 quartz stringer	
		13.91-13.92 quartz stringer	
		13.99-14.00 quartz stringer	
		14.08-14.10 " "	
		14.17-14.24 " vein	
		22.85-22.86 quartz stringer	
		35.57-33.58 " " at core angle 10°	
		36.04-36.07 " " - barren bull quartz	
		36.61-36.63 " " " " "	
		38.77-39.02 silicified, barren, 2% hematite	
		42.33-43.29 silicified, slight shearing, chlorite	
		stringers, barren, partially reabsorbed or meta-	
		somatized quartz diorite	
		46.51-46.95 metasomatized, sheared, 1% pyrite, very	
		soft, calcite and chlorite, silicified at L.C.	
		49.43-49.44 quartz stringer at core angle 20°	
		53.14-53.37 silicified zone, sheared at core angle 45°	

HOLE NO.: 75-3

Page 4 of 7.

FROM	TO	DESCRIPTION
		53.76-53.98 quartz-epidote vein , sheared at core angle 70°
		53.98-54.79 silicified zone, trace pyrite
		63.75 core angle(joints) at 40°
		71.0 core angle(joints) at 50°
		73.2-73.47 slight silicification, trace pyrite
		77.86-77.89 quartz stringer at core angle 20°
		79.53-79.75 slight silicification; trace pyrite
		81.10-81.89 alteration commences (metasomatic)
		81.18-81.29 quartz epidote vein
		81.89-82.97 quartz-carbonate metasomatized zone, chloritic,
		1-2% pyrite
		98.14 core angle(joints) at 45°
		103.17-103.28 silicified, chlorite stringer (3mm) at
		core angle 75°, trace pyrite
		103.86-104.40 silicified, trace pyrite
		104.87-105.07 silicified and sericitized, trace pyrite
		107.70-107.71 quartz stringer, barren, at core angle 50°

HOLE NO.: 75-4

FROM	TO	DESCRIPTION
		108.15-108.19 silicified, trace pyrite
		109.76-110.19 silicified
		109.76-109.77 quartz stringer
		110.08-110.085 quartz stringer at core angle 15°, trace pyrite
		110.69-110.70 quartz stringers at core angle 30°, trace pyrite in diorite at U.C. and L.C.
		110.74- 110.75 quartz stringers at core angle 30°, trace pyrite in diorite at U.C. and L.C.
		112.08-112.23 silicified, trace pyrite
		114.44-114.62 quartz-carbonate vein
		116.48-116.50 quartz stringers
		116.66-118.19 hornblende porphyry - gabbroic composition hornblende crystals to 1 cm, trace pyrite
		118.19-118.49 contact zone - metasomatized - derived from porphyry, slight shear at 40°, 1% pyrite
		122.42-122.77 metasomatized zone

HOLE NO.: 75-4

FROM	TO	DESCRIPTION
		123.48-123.50 quartz stringer, 2% pyrite
		124.21-124.22 quartz-chlorite stringer, trace pyrite at U.C. and L.C.
		124.33-124.37 quartz-chlorite stringer, trace pyrite at U.C. and L.C.
		125.30-125.305 quartz stringer, 30% pyrite
		125.63-125.65 quartz stringer, 5% pyrite
		125.73-125.75 silicified zone, 1% pyrite
		126.87-127.73 silicified zone, quartz stringers, partially reabsorbed diorite, 2%-3% disseminated pyrite, some chlorite in quartz stringers
		129.39-129.41 quartz stringer, trace pyrite
		129.49-129.50 " " " "
		129.71-129.73 " " " "
		129.94 -129.97 " " " "
		130.16-130.19 " " " "
		130.69-130.72 " " 10% pyrite

HOLE NO.: 75-4

Page 7 of 7.

FROM	TO	DESCRIPTION
		130.93-130.95 quartz stringer, 5% pyrite
		131.21-131.22 " " " " at U.C.
		131.34-131.35 " " " " " Core angle 60°
		132.92-132.93 " " " " " Core angle 60°
		134.39-134.46 " " " " " Core angle 60°
		134.77-135.73 silicified, trace pyrite
		135.69-135.73 quartz vein
		136.54-136.80 silicified
		137.79.-137.88 quartz-chlorite vein, 5% pyrite
		138.39-138.45 quartz stringers, trace pyrite
		139.61-139.62 " " " " " Core angle 60°
		139.89-139.98 " vein, 5% pyrite at U.C. and L.C.
		142.37-142.38 " stringers
		142.62-142.63 " " " " " Core angle 60°
		144.11-144.19 " vein
	147.01	END OF HOLE
		TROPARI TEST AT 142 M
		AZIMUTH - READ 161° CORRECTED 188°
		DIP +6°

TOMBILL MINES LIMITED

Page 1 of 7.

PROJECT: TOMBILL/PORCHER ISLAND GOLD MINES LTD.

HOLE NO.: 75-4 DEPTH: 130.54 CORE SIZE: AQ DIRECTION: 195° INCLINATION: 0° CLAIM NO.: TRIXIE  
STARTED: October 16, 1975 FINISHED: October 19th, 1975 LOT 6515  
LOGGED BY: G. Douglas DATE: October 21, 1975

LOCATION:- EDYE PASS ADIT, Latitude 5090.4N Departure 5024.2E

## MKS UNITS OF MEASUREMENT USED

FROM	TO	DESCRIPTION
0	130.54	QUARTE DIORITE - massive medium grained, 5% epidote, 25% quartz, 15-20% biotite, balance feldspars. Medium dark grey to dark grey in colour (N3.5), greenish black to dark grey (N2.5) xenoliths scattered throughout - some xenoliths strongly epidotized and have a greyish olive green colour (5GY 3/2). Occasional trace pyrite; quartz, quartz-epidote veins and stringers, silicified sections, metasomatized zones 0.14-0.31 bull quartz vein, 5% pyrite 0.31-0.50 silicified zone, 3% pyrite 0.94-0.945 quartz pyrite stringer, 50% pyrite 1.02-1.03 quartz stringer, 25% pyrite 3.60-3.92 metasomatized zone, core angle (shearing) at 40° (defined by stringers hematite?) 7.66-7.76 silicified zone, 2-3% pyrite 8.00-8.09 silicified zone, trace pyrite 8.48-8.50 quartz stringer, Core angle, U.C. = L.C. = 90° trace pyrite

FROM	TO	DESCRIPTION
		12.07-12.14 silicified zone, trace pyrite
		16.62-16.68 quartz stringers, 30% pyrite
		17.17-17.18 quartz stringers at core angle 10°
		18.62-18.65 quartz stringers at core angle 90°, 5%
		pyrite in chlorite stringers
		19.29-19.30 quartz stringer
		19.39-19.41 quartz stringer
		19.79-19.84 silicified zone, trace pyrite
		19.84-19.92 quartz vein, 5% pyrite
		22.78-23.39 silicified zone, trace pyrite, core angle
		(joints) at 60°
		32.40-32.67 epidotized
		33.84-33.94 quartz-epidote stringer at core angle 40°
		trace pyrite at U.C. and L.C.
		36.86-37.14 3mm quartz stringer at core angle 0°
		vug gilled with less than 1mm quartz crystals.
		37.52-37.53 calcite stringer



FROM	TO	DESCRIPTION
		39.37-39.73 silicified, chlorite stringers at core angle 45°
		40.13-40.22 silicified, 2-3% pyrite, quartz-pyrite stringer
		at core angle 35°
		41.59-41.71 silicified, 2% pyrite
		42.42-42.54 1% pyrite in quartz diorite, weak foliation
		at core angle 30°
		43.95-43.97 quartz stringer at core angle 40°, 3mm
		pyrite seam
		47.40-47.75 highly silicified, 1-2% pyrite
		48.56 3mm calcite seam at core angle 35°
		48.98-49.17 slightly silicified
		50.60-50.69 " "
		53.40-54.20 slightly silicified
		54.56-55.46 quartz vein, sericite, appears to be crushed,
		quartz is medium to coarse grained yellowish grey
		in colour (5Y 8/1). U.C. 35°, L.C. 55°, trace
		pyrite

HOLE NO.: 75-4

FROM	TO	DESCRIPTION	
		55.46-56.41 silicified, trace disseminated chalcopyrite	
		57.47-57.74 silicified, 3% pyrite disseminated	
		58.56-58.70 silicified, 2% pyrite disseminated	
		58.81-58.94 slightly silicified, trace pyrite	
		66.67-67.12 quartz-sericite vein, trace pyrite,	
		U.C. = L.C. = 20°	
		67.42 core angle (joints) at 40°	
		70.73-70.77 quartz-epidote stringer	
		71.56-71.60 quartz-epidote stringer at core angle 40°	
		78.49-78.80 quartz-sericite vein, trace pyrite, U.C =	
		25°, L.C. = 20°	
		78.84-78.85 quartz stringer at core angle - 20°	
		83.72-83.86 slight silicification, 5% pyrite	
		84.45-84.46 quartz stringer at core angle 25°, 5% pyrite	
		90.30-90.34 quartz stringer at core angle at 60°,	
		trace pyrite	
		90.76-90.765 quartz stringer	

HOLE NO.: 75-4

FROM	TO	DESCRIPTION
		101.20-101.36 silicified, trace pyrite, hematite
		101.36-101.84 5mm quartz stringer at core angle $0^{\circ}$ ,
		occasional speck pyrite near contact
		102.56-103.15 silicified - trace pyrite
		103.97-104.48 silicified and epidotized - barren
		104.48-104.95 silicified - 1% pyrite; quartz stringer
		at core angle $0^{\circ}$
		109.59-109.89 silicified, 2% pyrite
		111.49-111.86 slightly silicified - barren
		114.97-114.98 quartz stringer at core angle $20^{\circ}$
		118.58 core angle (joints) at $60^{\circ}$
		118.59-118.96 silicified, trace pyrite, chlorite
		stringer at core angle $60^{\circ}$
		121.61-122.92 silicified (slightly to moderately),
		trace pyrite
		122.47-122.57 bull quartz vein, 3mm pyrite at L.C.
		core angle L.C. at $80^{\circ}$



TOMBILL MINES LIMITED

Page 1 of 4.

PROJECT: TOMBILL/PORCHER ISLAND GOLD MINES LTD.

HOLE NO.: 75-5    DEPTH: 68.02M    CORE SIZE: AQ    DIRECTION: 180°    INCLINATION: 0°    CLAIM NO.: TRIXIE  
LOT 6515

STARTED: October 20, 1975    FINISHED: October 21, 1975

LOGGED BY: G. Douglas    DATE: October 23

SAMPLED BY: W. Adams

LOCATION: - EDYE PASS ADIT, Latitude 5089N    Departure 5035E

HOLE NO.: 75-5

FROM	TO	DESCRIPTION
0	68.02	QUARTZ DIORITE - massive, medium grained, medium dark
		grey to dark grey (N3.5) in colour. Xenoliths scattered
		throughout are generally biotite rich. Occasional trace
		pyrite; quartz, quartz-chlorite stringers and silicified
		zones.
		9.14-10.07 slight to moderate silicification, trace
		pyrite
		15.65-15.69 silicified, 5% pyrite
		16.6 core angle (joints) at 40°
		16.74-16.78 silicified, 15% pyrite (in a stringer at
		core angle 40°)
		17.36-19.18 silicified, trace pyrite
		19.39-19.40 quartz stringer
		20.05-20.06 quartz-chlorite stringer
		20.34-20.35 quartz stringer
		20.91-20.93 quartz stringer, 5% pyrite
		22.27-23.36 silicified, trace pyrite

HOLE NO.: 75-5

Page 3 of 4.

FROM	TO	DESCRIPTION	
		23.36-24.03 quartz vein, 1% disseminated pyrite	
		24.03-27.19 silicified, 1% pyrite	
		30.19-30.34 silicified, trace pyrite	
		32.19-32.51 barren bull quartz vein	
		32.32-32.38 quartz diorite	
		32.51-32.68 silicified	
		36.82-37.43 silicified, trace pyrite	
		39.33-39.93 intense silicification, trace-1% pyrite,	
		biotite altered to chlorite	
		39.93-40.19 silicified	
		51.11-51.15 silicified, trace pyrite	
		51.15 core angle (joints) at 60°	
		52.16-52.21 quartz stringer, 1% pyrite	
		52.21-52.63 silicified, trace pyrite	
		53.70-54.27 silicified; sheared at core angle 20°	
		60.53-60.61 silicified	
		63.76-63.77 quartz stringer	





TOMBILL MINES LIMITED

Page 1 of 4.

PROJECT: TOMBILL/PORCHER ISLAND GOLD MINES LTD.

HOLE NO.: 75-6    DEPTH: 75.64M    CORE SIZE: AQ    DIRECTION: 147°    INCLINATION: 0°    CLAIM NO.: TRIxie  
LOT 6515

STARTED: October 21, 1975    FINISHED: October 21, 1975

LOGGED BY: G. Douglas    DATE: October 23, 1975

LOCATION:- EDYE PASS ADIT, Latitude 5088.6N Departure 5036.8E

HOLE NO.: 75-6

FROM	TO	DESCRIPTION
0	75.64	QUARTZ DIORITE - massive, medium grained, medium dark
		grey to dark grey (N3.5) in colour. Xenoliths
		scattered throughout, generally biotite percentage
		higher than normal diorite, occasional trace pyrite;
		quartz, quartz-pyrite and quartz-chlorite stringers and
		veins; silicified zones
		12.04-12.13 silicified zone, trace pyrite
		12.07-12.09 quartz stringer at core angle 30°
		17.02-17.05 quartz stringer
		18.27 2mm quartz-pyrite stringer at core angle 55°
		18.40 " " -chlorite stringer
		20.59-20.73 1% pyrite in slightly silicified quartz diorite
		21.0-21.04 5% " " " " " "
		21.50-21.52 quartz stringer
		21.91-21.92 " "
		22.30-22.34 " " , trace pyrite
		22.58-22.61 " "

HOLE NO.: 75-6

FROM	TO	DESCRIPTION
		22.76-22.77 quartz-chlorite stringer
		22.93-22.94 quartz-chlorite stringer
		23.37-23.38 quartz stringer
		24.57-24.68 silicified, trace pyrite
		24.86-24.93 silicified, chlorite stringer at 50°, trace pyrite
		25.75-25.79 quartz stringer
		26.50-27.31 metasomatized zone, epidotized, trace pyrite
		29.69-29.79 silicified and metasomatized, trace pyrite at L.C.
		41.94-42.36 metasomatized
		43.16 3mm chlorite stringer
		43.56 " " "
		45.75-45.76 silicified
		46.61-46.80 "
		47.07-47.075 quartz stringers at core angle 50°
		47.67-47.78 quartz vein

HOLE NO.: 75-6

Page 4 of 4.

FROM	TO	DESCRIPTION
		47.78-48.38 silicified
		48.83-49.54 slightly silicified, trace pyrite, six 4mm quartz stringers
		50.47-50.49 quartz stringer
		53.81-54.60 metasomatized (epidotized) barren
		61.04-61.98 silicified, weak shearing at core angle 30°
		66.91-66.92 quartz stringer
		74.77-75.17 metasomatized (epidotized)
		74.81-74.82 quartz stringer
		75.06-75.07 quartz stringer
	75.64	END OF HOLE
		TROPARI TEST AT 70.M
		AZIMUTH READ 113° CORRECTED 140°
		DIP +3

TOMBILL MINES LIMITED

Page 1 of 4.

PROJECT: TOMBILL/PORCHER ISLAND GOLD MINES LTD.

HOLE NO.: 75-7    DEPTH: 47.27M    CORE SIZE: AQ    DIRECTION: 175°    INCLINATION: 0°    CLAIM NO.: WESTERN HOPE  
LOT 6516

STARTED: October 22, 1975    FINISHED: October 22, 1975

LOGGED BY: G. Douglas    DATE: October 24, 1975  
SAMPLED BY: W. Adams

LOCATION:- EDYE PASS ADIT, Latitude 5206N Departure 5113.8E

HOLE NO.: 75-7

FROM	TO	DESCRIPTION
0	47.27	QUARTZ DIORITE - massive medium grained, medium dark grey to dark grey (N3.5) in colour. Quartz, quartz-chlorite stringers and silicified zones. Trace pyrite occasionally. Discontinuous stringers pyrite in some quartz veins.
		1.7-2.16 shear zone - quartz-chlorite stringers at various core angles ( $0^{\circ}$ - $45^{\circ}$ ), trace pyrite
		2.45-2.46 quartz stringer at core angle $50^{\circ}$
		4.275-4.28 quartz stringer
		5.79-5.81 quartz stringer, 2% pyrite
		7.71-7.73 quartz-epidote stringer
		8.71-8.81 slight silicification, trace pyrite
		8.91-8.92 quartz stringer
		10.77-10.775 quartz stringer at core angle $50^{\circ}$
		11.395-11.40 quartz stringer
		11.40-11.56 silicified and epidotized
		11.74-11.75 quartz stringer

FROM	TO	DESCRIPTION
		11.92-11.925 quartz stringer
		12.25-12.29 quartz stringer
		12.36-12.90 silicified, trace pyrite, thin quartz stringers
		12.90-13.20 bull quartz vein, 2-3% pyrite in discontinuous stringers and disseminated, chlorite stringers
		14.075-14.08 quartz stringer
		14.74-14.97 bull quartz vein, chlorite stringers, trace pyrite
		14.97-15.68 slightly silicified
		15.68-15.78 quartz-chlorite vein - 1% pyrite at U.C.
		15.78-15.97 silicified
		15.97-19.97 basalt dyke - fine grained, U.C. at 90°, L.C. at 10°, 2-3% pyrite in stringers (discontinuous) and disseminated, greenish black (5G 2/1) in colour
		19.45-19.99 epidotized diabase, sheared at core angle 10°
		24.75-25.15 slight silicification, trace pyrite

HOLE NO.: 75-7

FROM	TO	DESCRIPTION
		29.23-29.235 quartz stringer
		30.22-30.84 slightly silicified
		33.86-33.89 silicified, trace pyrite
		35.68-36.37 slightly silicified
		36.37-36.46 quartz-chlorite vein, U.C. at core angle
		50°, L.C. at core angle 40°, trace pyrite at L.C.
		36.46-38.76 silicified, quartz-chlorite stringer at
		core angle 45°, trace pyrite
		41.19-41.40 slight silicification, 1% pyrite
		43.22-43.24 quartz stringer
		43.73-43.78 silicified, trace pyrite
		44.26-44.29 quartz stringer 1% pyrite
		44.47-44.95 silicified, quartz stringer - 2% pyrite
		46.82-46.94 silicified, 3mm pyrite stringer
	47.27	END OF HOLE
		TROPARI TEST AT 45M
		AZIMUTH READ 138° CORRECTED 165°

DIP +1°



TOMBILL MINES LIMITED

Page 1 of 5.

PROJECT: TOMBILL/PORCHER ISLAND GOLD MINES LTD.

HOLE NO.: 75-8    DEPTH: 110.71M    CORE SIZE: AQ    DIRECTION: 206°    INCLINATION: 0°    CLAIM NO.: TRIXIE  
LOT 6515

STARTED: October 23, 1975    FINISHED: October 25, 1975

LOGGED BY: G. Douglas    DATE: October 27, 1975

SAMPLED BY: W. Adams

LOCATION:- EDYE PASS ADIT, Latitude 5087.1N    Departure 5011.8E

FROM	TO	DESCRIPTION
0	110.71	QUARTZ DIORITE-massive, medium grained, medium dark
		grey to dark grey (N3.5); xenoliths scattered throughout,
		generally rich in biotite and are greenish black to dark
		grey (N2.5), occasional trace pyrite. Silicified and
		epidotized zones; quartz veins and stringers + chlorite
		2.78-2.81 quartz stringer at core angle 40°, trace pyrite
		at U.C. and L.C.
		2.88-2.89 quartz stringer, trace pyrite at U.C. and L.C.
		3.42-3.425 quartz stringer at core angle 30°, trace
		pyrite at U.C. and L.C.
		4.87-5.07 silicified, trace pyrite
		5.24 2mm quartz stringer
		6.51-6.57 quartz-chlorite stringer
		10.89-12.28 silicified, trace pyrite, poor shearing at
		core angle 10°
		13.36-13.61 1-2% pyrite
		13.36-13.37 quartz stringer, pyrite at U.C. and L.C.

HOLE NO.: 75-8

Page 3 of 5.

FROM	TO	DESCRIPTION
		13.47-13.48 quartz stringer; pyrite at U.C. and L.C.
		13.54-13.57 " " " " "
		13.60-13.61 " " " " "
		16.17-16.26 silicified
		19.01 2mm pyrite stringer
		19.26-19.28 quartz stringer, trace pyrite
		20.38-20.39 " "
		20.62-20.66 " " , trace pyrite at U.C., L.C.
		23.79-25.32 slight silicification, trace pyrite
		29.99-30.13 silicified
		35.18-36.0 slight silicification, quartz-chlorite stringer
		at core angle 0°, trace pyrite
		36.34-36.39 silicified, trace pyrite
		36.77-36.78 " " "
		38.62-38.69 " " " , sheared at core angle 30°
		40.48-40.56 " " "
		41.58-42.09 slight silicification

HOLE NO.: 75-8

FROM	TO	DESCRIPTION
		43.12-45.75 silicified, trace pyrite
		45.58-45.63 quartz vein, barren
		47.57-47.575 quartz-chlorite stringer, 5% pyrite
		47.80-47.805 quartz chlorite stringer
		48.37-48.41 " " " , trace pyrite
		57.02-57.12 silicified, trace pyrite
		57.21-57.26 " " "
		57.88-57.96 " " "
		59.49-59.51 " ,chlorite stringer at core angle 45°
		59.93-59.95 "
		60.63-60.87 " , sheared at core angle 20°
		60.87-61.0 bull quartz vein, 2% pyrite
		61.0-62.25 silicified, trace pyrite
		62.25-62.82 bull quartz vein
		63.09-63.19 silicified, 1% pyrite
		69.54-69.70 intense silicification, trace pyrite
		72.25-72.34 silicified, trace pyrite

HOLE NO.:

FROM	TO	DESCRIPTION
		72.65-72.655 quartz stringer at core angle 40°
		84.23-85.57 silicified, slight shearing at core angle
		50°, trace pyrite
		84.54-84.55 quartz stringer, trace pyrite
		84.79-84.84 quartz vein, trace pyrite
		94.90-95.00 epidotized and silicified, slight
		shearing at 60°
		99.27-99.38 epidotized
		102.06-103.36 hornblende porphyry, U.C. at 40°
		hornblende crystals to 1 cm
		103.36-103.79 altered porphyry-fine grained porphyry,
		epidotized, L.C. at 45°
		104.62-104.90 silicified
		106.91-106.92 quartz-sericite stringer at core
		angle 55°
	110.71	END OF HOLE
		TROPARI TEST AT 105M; ASIMUTH READ 175° CORRECTED 202°

DIP + 5°

APPENDIX II

A G R E E M E N T

THIS A G R E E M E N T made this 29th day of August 1975.

BETWEEN: TOMBILL MINES LIMITED  
P.O. Box 28  
Toronto Dominion Centre  
Toronto, Canada  
M5K 1B2

(hereinafter referred to as the "COMPANY")

AND: CONNOPS DRILLING INC.  
205 - 1201 West Pender St.  
Vancouver, B. C.

(hereinafter referred to as the "CONTRACTOR")

WHEREAS the COMPANY hereby requests that the CONTRACTOR carry out certain underground diamond drilling and other services, on the COMPANY'S property on Porcher Island, near Prince Rupert, B.C.

AND WHEREAS the CONTRACTOR hereby agrees to perform said diamond drilling and other services requested, under the terms and conditions hereinafter contained.

1. SCOPE OF WORK

The work is to consist of series of drill holes, drilled at locations specified by the COMPANY. A total minimum footage of 2000 feet shall be drilled, but total footage may be extended beyond that amount, by mutual consent. Holes shall be drilled with AQWL tools producing 1 1/16" diameter core, as far as is reasonably practical. Maximum depth of any hole shall not exceed 750 feet, and minimum depth shall be 100 feet.

2. COMMENCEMENT AND EXECUTION OF WORK

Work shall be commenced: On or around September 8, 1975, work will be carried out with shifts working seven days a week or as near that schedule as can reasonably be maintained.

3. THE CONTRACTOR HEREBY CONVENANTS AND AGREES:

- (a) To provide all of the required drilling machinery and associated tools including, but not limited to: Drill outfit, rods, com-

pressor, tractor, diamond set items, oil and grease, airline, waterline, water storage and air receiver tanks, power plant, radio telephone, etc.

- (b) That drilling crews will follow good drilling practice and shall use due care and diligence as shall enable them to recover as high a percentage of core as the nature of the ground being drilled shall permit. All cores shall be delivered to the COMPANY, in boxes provided by the COMPANY at the drill sites.
- (c) That it shall be responsible for, and will pay promptly all costs and charges, incurred by itself for labor, machinery, tools, and supplies used in completing the work hereunder so that no lien or other such charge relative to the CONTRACTOR, may be registered against the COMPANY or the property. The CONTRACTOR shall be responsible for the payment of all assessments for Workmen's Compensation, Holiday Pay, Canada Pension, Unemployment Insurance, Sales Tax, or other such applicable charges relative to its own labor and supplies purchased.
- (d) The CONTRACTOR shall, at all times enforce strict discipline and maintain good order among its employees and shall not retain on the work any unfit person or anyone not skilled in the work assigned to him. Any employee who is objectionable or unsatisfactory to the COMPANY shall be removed from the work and replaced by an employee satisfactory to the COMPANY.
- (e) The CONTRACTOR shall keep his camp and drill sites free from waste and rubbish, and at the completion of his work he shall leave the camp area and all drill sites as clean as possible, and remove all tools, scaffolding and surplus materials.
- (f) The CONTRACTOR or its personnel shall not divulge any information concerning drilling results, or permit access to, or examination of the drill core by any person not specifically authorized by the COMPANY.
- (g) The CONTRACTOR will provide an experienced drill foreman to see that the work is performed in an expeditious manner.
- (h) The CONTRACTOR will provide a miner to do the necessary timbering and tunnel preparation, at Field Cost labor rate.
- (i) The CONTRACTOR will provide labor to clean up tunnel as required, at Field Cost labor rate.
- (j) CONTRACTOR'S job foreman will service and operate air compressor while drilling is in progress, at no extra cost. However, delays resulting from the breakdown of the air compressor will be charged to the Company at half Field Cost.
- (k) The Contractor will observe all local environmental control and health regulations currently enforced in the project area.
- (l) That delays resulting from the breakdown of drilling equipment will be at no cost to the Company.



4. THE COMPANY HEREBY AGREES

(a) Should cavities, loose or caving ground or excessive water flows be encountered in a hole so that further drilling in that hole is deemed impracticable, that hole may by mutual consent, be abandoned, and, the CONTRACTOR be paid at rates so specified herein for all footage completed in that hole. However, should the COMPANY request that further work be carried out in the hole beyond this point, then the CONTRACTOR shall continue work in the hole but such continuing work shall be at Field Cost Rates. Whether materials are left in the holes or removed as a result of such continuing work shall be the Company representative's decision.

(b) That all transportation services, whether by water or by air, for equipment, supplies and crews for the duration of the job, from Prince Rupert to job site and return, shall be for the COMPANY'S account at cost.

(c) The COMPANY shall provide, at no cost to the CONTRACTOR, all rights of way of ingress and egress to all lands that may be required to enable the CONTRACTOR to carry out the work as specified. The CONTRACTOR shall be permitted to cut and fell any timber on the COMPANY'S property as may be required in the course of the work hereunder, and the COMPANY shall indemnify and save harmless the CONTRACTOR from any assessment for stumpage or other charges of every kind and nature.

5. THE COMPANY HEREBY AGREES to pay the CONTRACTOR for footage drilled and other services performed as follows:

(a) Mobilization and demobilization: For equipment and crews, from base of operations to transport discharge point at Prince Rupert and return at job completion, a total sum of \$11,000.00.

(b) Drilling: AQ size,       0 - 250 feet, at \$14.50 a foot.  
                              250 - 500 feet, at \$15.25 a foot.  
                              500 - 750 feet, at \$16.25 a foot.

(c) Rentals: Compressor 900 C.F.M., at \$3200.00 a month.

(d) Fuel: Diesel fuel required for compressor, camp and tractor shall be for the COMPANY'S account at cost plus freight the job site.

(e) Reaming hole, for casing: If required, at Field Cost.

- (f) Casing of hole, if required: At Field Cost.
- (g) Standby, dip-testing, or delay time, or other time during which the CONTRACTOR'S crews are performing services, for the COMPANY not otherwise covered herein: At Field Cost. The contractor will furnish a clinometer, test tubes and hydrofluoric acid necessary for dip-testing. RM 488
- (h) Airline: The CONTRACTOR will install airline at Field Cost labor rates.
- (i) Water supply: The CONTRACTOR will install waterline at Field Cost labor rate.
- (j) Moving of drill and equipment: From transport discharge point to first drill site moving, setting up, tearing down and moving out, at Field Cost.
- (k) Timber: Timber required for underground operations shall be for the COMPANY'S account, at cost F.O.B. the drill site, plus 10 percent.
- (l) Tractor: CONTRACTOR'S personnel will operate tractor at Field Cost labor rate.
- (m) Core boxes: The CONTRACTOR will supply, at \$3.50 a wooden tray of 25 feet capacity. Lids at \$1.00 each plus the cost of freight.
- (n) Camp: The CONTRACTOR will provide camp for 8-10 men. Setting up and tearing down shall be at Field Cost labor rate. The CONTRACTOR will provide board for its personnel. Board and housing for COMPANY personnel shall be at \$20.00 a man day.
- (o) Field Costs, where applicable, shall be: Labor at \$16.50 a man hour, equipment rental at \$6.00 a drill shift hour during Field Cost portion of the work, consumable items at cost plus 10 percent.

6. INSURANCE AND GENERAL RM 488

- (a) The CONTRACTOR, at its own cost, shall maintain insurance to the following limits; Liability and Property Damage \$2,000,000.00, Automobile Insurance coverage \$1,000,000.00.
- (b) Neither the Contractor nor the Company shall ~~THE CONTRACTOR shall not~~ be held liable for any loss or damage suffered by reason of any cause beyond its active control such as riots, strikes, lockouts, Acts of God, or failure of transportation.
- (c) Under the foregoing terms and conditions the CONTRACTOR does not guarantee to drill any hole to any specified depth. The

CONTRACTOR will however, expend every reasonable effort to complete all holes to the satisfaction of the COMPANY.

- (d) The CONTRACTOR shall invoice the COMPANY semi-monthly for footage drilled and other services performed. Such invoices shall be due and payable within 30 days of the invoice date.

IN WITNESS WHEREOF THE COMPANY and the CONTRACTOR set their hands this 29th day of August 1975.

SIGNED IN THE PRESENCE OF:

R. Davies

TOMBILL MINES LTD.

John B. Hopkins

CONNORS DRILLING LTD.

D. Miller, Div. mgr.

A. Goggin

APPENDIX III

# Corinors Drilling Ltd.

Subsidiary of  
Bow Valley Industries Ltd

OCT 14 1975

XXXXXXXXXXXX

Suite 205 - 1201 West Pender Street  
Vancouver, B.C. V6E 2V2

Job No. 21-617

INVOICE NO: 6213

DATE: October 7, 1975.

TomBill Mines Limited,  
P.O. Box 28,  
Toronto Dominion Centre,  
Toronto, Ontario.  
M5K 1B8.

SURFACE DIAMOND DRILLING  
PORCHER ISLAND, Prince Rupert, B.C.  
Sept. 19 - 30, 1975

Mobilization/Demobilization (Lump Sum) \$11,000.00

COMPRESSOR RENTAL - Sept. 16-30/75

1/2 month @ \$3200.00	\$ 1600.00	
5% tax	<u>80.00</u>	1,680.00

FUEL

Standard Oil Co.	Inv. 068 (copy attached)	\$721.98	
Shell Oil Co.	" 975-974 "	1434.83	
Shell Oil Co.	" 975-984 "	360.00	
Imperial Oil	" 076854 "	<u>1927.63</u>	4,444.44

CORE BOXES, LIDS & WEDGES

100	AQ Core Boxes	@ \$3.50	350.00	
20	" " " Lids	@ 1.00	20.00	
3	Bundles Wedges	@ 10.00	<u>30.00</u>	
			400.00	
		5% tax	<u>20.00</u>	420.00

- TomBill Mines Limited,  
P.O. Box 28,
- Toronto Dominion Centre,  
Toronto, Ontario.
- M5K 1B8.

DATE October 7, 1975.

INVOICE NO 6213

Job No. 21-617

- 2 -

### TIMBER FOR UNDERGROUND

Port Coquitlam Bldg.	Inv. #39815 (copy attached)	\$20.75	
" " "	" 39814 " "	<u>1154.70</u>	
		1175.45	
	Plus 10%	<u>117.54</u>	\$ 1,292.

### FREIGHT CHARGES ON LUMBER & CORE BOXES

Northland	Inv. # 01010272 (copy attached)	\$ 196.90	
" "	" 01010273 " "	141.60	
" "	" 4836 " "	630.00	
Rivtow Straits	" 24260 " "	<u>4483.00</u>	5,451.

### FIELD COST WORK

<u>Date</u>	<u>Man Hrs.</u>	<u>Drill Hrs.</u>	<u>Remarks</u>
Sept. 19/75	48	Ø	Unloading Barge
20/75	60	Ø	" "
21/75	60	Ø	Unload barge & build camp
22/75	50	Ø	Building Camp
23/75	60	Ø	" "
24/75	50	Ø	" "
25/75	50	10	Cleaning Portal
26/75	50	10	Build New Portal
27/75	50	10	Cleaning Up Portal
28/75	50	10	Cleaning Underground
29/75	50	10	" "
30/75	50	10	" "
	<u>628</u>	<u>60</u>	

- TomBill Mines Limited,  
P.O. Box 28,  
Toronto Dominion Centre,  
Toronto, Ontario.
- M5K 1B8

• DATE October 7, 1975  
 • INVOICE NO. 6213  
 • Job No. 21-617

- 3 -

TOTAL Man Hours	628	@	\$16.50	\$10,362.00
" Drill "	60	@	6.00	<u>360.00</u>
				\$10,722.00

\$35,010.93

*Approved*  
*Change to Parker Is held request.*  
*R. Davie*

JOB # 21-617

INVOICE NO: 6238

DATE: October 21, 1975

Tombill Mines Limited,  
P.O. Box 28,  
Toronto Dominion Centre,  
Toronto, Ontario  
M5K 1B8

SURFACE DIAMOND DRILLING  
Porcher Island, Prince Rupert, B.C.  
October 1 - 15, 1975

FOOTAGE FEE

D. D. Hole #	1	0' - 250'	250'	@	\$14.50	\$3625.00	
		250' - 262'	12'	@	15.25	183.00	
#	2	0' - 250'	250'	@	14.50	3625.00	
		250' - 254'	4'	@	15.25	61.00	
#	3	0' - 250'	250'	@	14.50	3625.00	
		250' - 482'	232'	@	15.25	3538.00	\$ 14,637.00
			<u>998</u>				

COMPRESSOR RENTAL October 1 - 15/75

1/2 month @ \$3200.00	\$ 1600.00	
5% tax	<u>80.00</u>	1,680.00

FIELD COST WORK

<u>Date</u>	<u>Shift</u>	<u>Man Hrs.</u>	<u>Drill Hrs.</u>	<u>Remarks</u>
Oct 1/75	Day	50	10	Cleaning underground
2/75	Day	50	10	" "
3/75	Day	50	5	Clean underground & install air & water line
4/75	Day	50	0	" " "

6238



To  
 • Tombill Mines Limited,  
 • P.O. Box 28,  
 • Toronto Dominion Centre,  
 • Toronto, Ontario.

DATE October 21, 1975

INVOICE NO 6238

JOB # 21-617

- 2 -

<u>Date</u>	<u>Shift</u>	<u>Man Hrs.</u>	<u>Drill Hrs.</u>	<u>Remarks</u>
Oct. 5/75	Day	2	1	Complete setting up
7/75	Night	4	2	Dip test @ 250'
7/75	Night	16	8	Moving to Hole #2
10/75	Night	6	3	Dip tests
10/75	Night	10	5	Moving to Hole #3
11/75	Day	10	5	Setting up Hole #3
11/75	Day	6	3	Haul fuel to compressor
15/75	Day	7	3½	Dip tests
15/75	Night	20	10	Move & setting up
		<u>281</u>	<u>65½</u>	

TOTAL MAN HOURS	281 @ \$16.50	\$4,636.50	
TOTAL DRILL HOURS	65½ @ 6.00	<u>393.00</u>	\$ 5,029.50

\$ 21,366.50

Job 21-618

INVOICE NO: 6266  
DATE: November 7, 1975

Tombill Mines Limited  
P.O. Box 28  
Toronto Dominion Centre  
Toronto, Ontario  
M5K 1B8

UNDERGROUND DIAMOND DRILLING  
Porcher Island  
Prince Rupert, B.C.  
October 16-31, 1975

FOOTAGE FEE

D.D. Hole #	4	0' - 250'	250'	@ \$ 14.50	\$ 3,625.00
		250' - 428'	178'	@ 15.25	2,714.50
	5	0' - 223'	223'	@ 14.50	3,233.50
	6	0' - 248'	248'	@ 14.50	3,596.00
	7	0' - 155'	155'	@ 14.50	2,247.50
	8	0' - 250'	250'	@ 14.50	3,625.00
		250' - 363'	113'	@ 15.25	1,723.25
			1417'		<u>20,764.75</u>

COMPRESSOR RENTAL October 16-31, 1975

1/2 month @ \$ 3200.00	\$ 1,600.00	
5% Tax	<u>80.00c</u>	1,680.00

FIELD COST WORK

<u>Date</u>	<u>Shift</u>	<u>Man Hrs.</u>	<u>Drill Hrs.</u>	<u>Remarks</u>
Oct. 16/75	Day	4	2	Set up on Hole #4
18/75	Night	4	2	Tear down for move
18/75	Night	6	3	Tropari Test #428'
18/75	Night	2	1	Hand Mucking

DATE November 7, 1975

INVOICE NO 6266

To  
• Tombill Mines Limited  
• P.O. Box 28  
• Toronto Dominion Centre  
• Toronto, Ontario

Date	Shift	Man Hrs.	Drill Hrs.	Remarks
Oct. 19/75	Day	8	4	Move & Set up on Hole #5
20/75	Day	2	1	Tropari Test
20/75	Day	4	2	Move & Set up on Hole #6
21/75	Day	4	2	Tropari Test @220'
21/75	Day	6	3	Tear down to move
21/75	Night	14	7	Moving to Hole #7
21/75	Night	4	2	Hook up air & water
21/75	Night	2	1	Scaling
22/75	Day	4	2	Complete move & Set up
22/75	Night	3	1½	Tropari Test
22/75	Night	5	2½	Tear down to move
23/75	Day	2	10	Moving to hole #8
25/75	Night	6	3	Tropari Test @ 350'
25/75	Night	10	5	Tear down to move
26/75	Day	54	12	Moving out equipment
27/75	Day	40	10	Tearing down to move
28/75	Day	50	10	Tearing down to move
29/75	Day	50	Ø	Tear down camp
30/75	Day	62	Ø	Loading Barge
31/75	Day	16	Ø	Return Box to Northland
		380	86	
<b>TOTAL MAN HOURS</b>		380 @	\$16.50	\$6,270.00
<b>TOTAL DRILL HOURS</b>		86 @	6.00	<u>516.00</u>
				\$6,786.00
<b>BOARD SUPPLIES YOUR PERSONNELS</b>				
Sept. 19 - Oct. 31, 1975				
59 Man Days @ \$20.00				1,180.00
<b>TRUCK RENTAL</b>				
Sept. 16&17, 1975 2 days @ \$30.00				60.00
<b>CORE SPLITTER RENTAL</b>				<u>50.00</u>

Total \$30,520.75



**LEGEND**

- 412 Survey station
- ◇ Surveyed claim post
- Underground workings surveyed Oct, 1975
- - - - - Underground workings plotted from a compilation by I.M. Waterland, P. Eng.
- Claim line
- - - - - Geological boundary
- Ore lens
- Basalt dyke
- Hornblende porphyry
- Shear zone
- Diamond drill hole

NOTE: EDYE PASS TIED TO SURF POINT No 1 TUNNEL BY A SURVEY CARRIED OUT BY G. DOUGLAS & K. TAYLOR Oct, 1975

Department of  
Mines and Petroleum Resources  
ASSESSMENT REPORT  
NO. 5728 M.S.P. 3

TOMBILL MINES LTD  
PORCHER ISLAND GOLD MINES LTD  
JOINT VENTURE  
PORCHER ISLAND B.C.  
PLAN SHOWING THE LOCATION OF THE DIAMOND DRILL HOLES IN RELATION TO THE UNDERGROUND WORKINGS OF THE SURF POINT AND EDYE PASS MINES

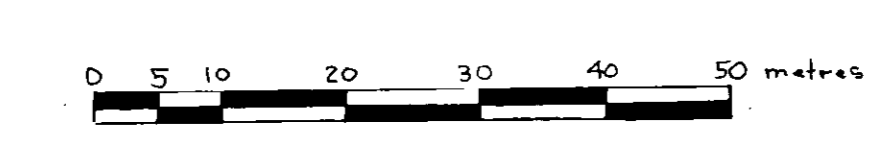
DATE: Nov 18<sup>th</sup>, 1975

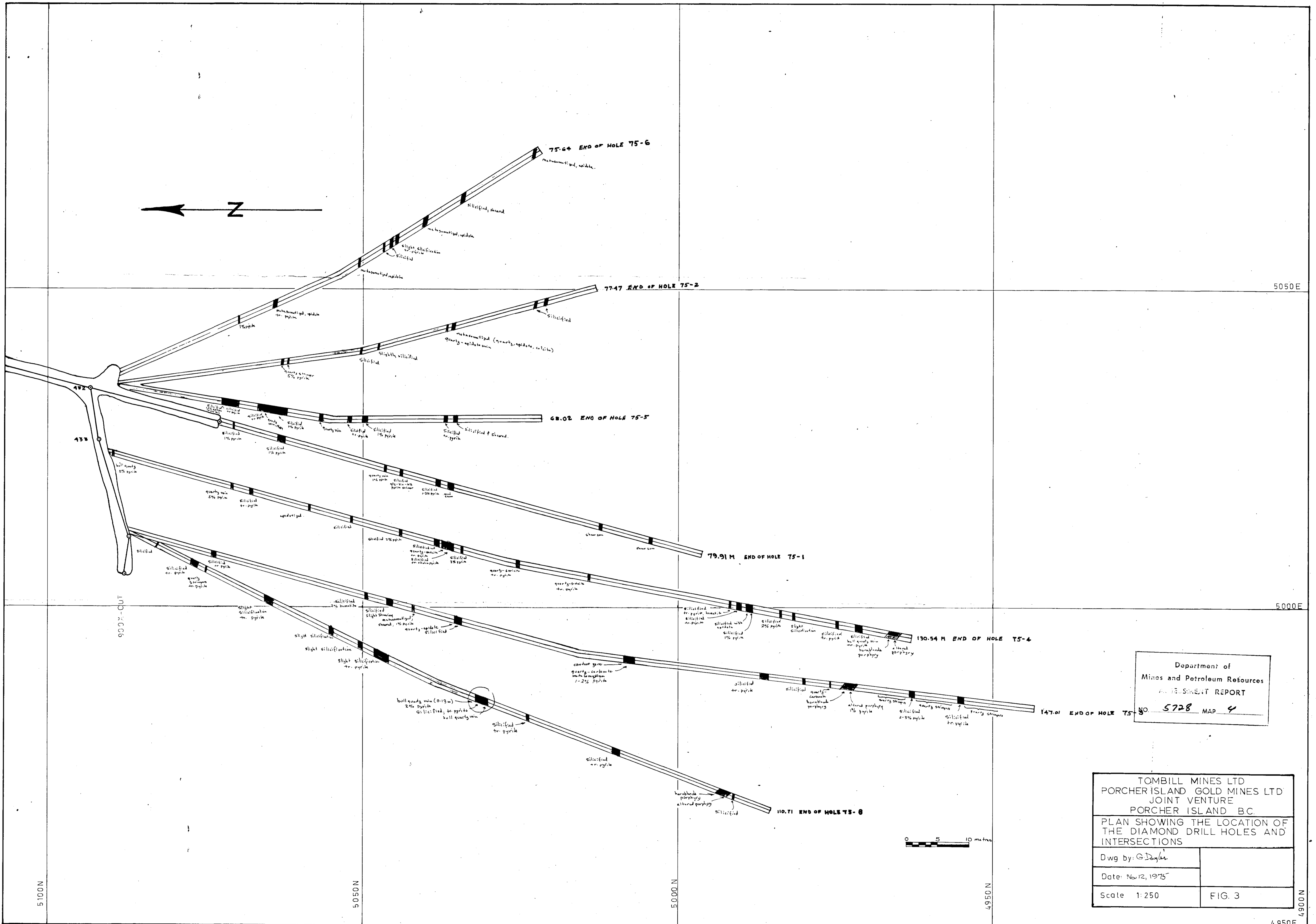
SCALE: 1:600

NOTE: Inclination of all holes is 0° & core dia. is 27 mm (1.06")

FIG. 2

M-3  
5728

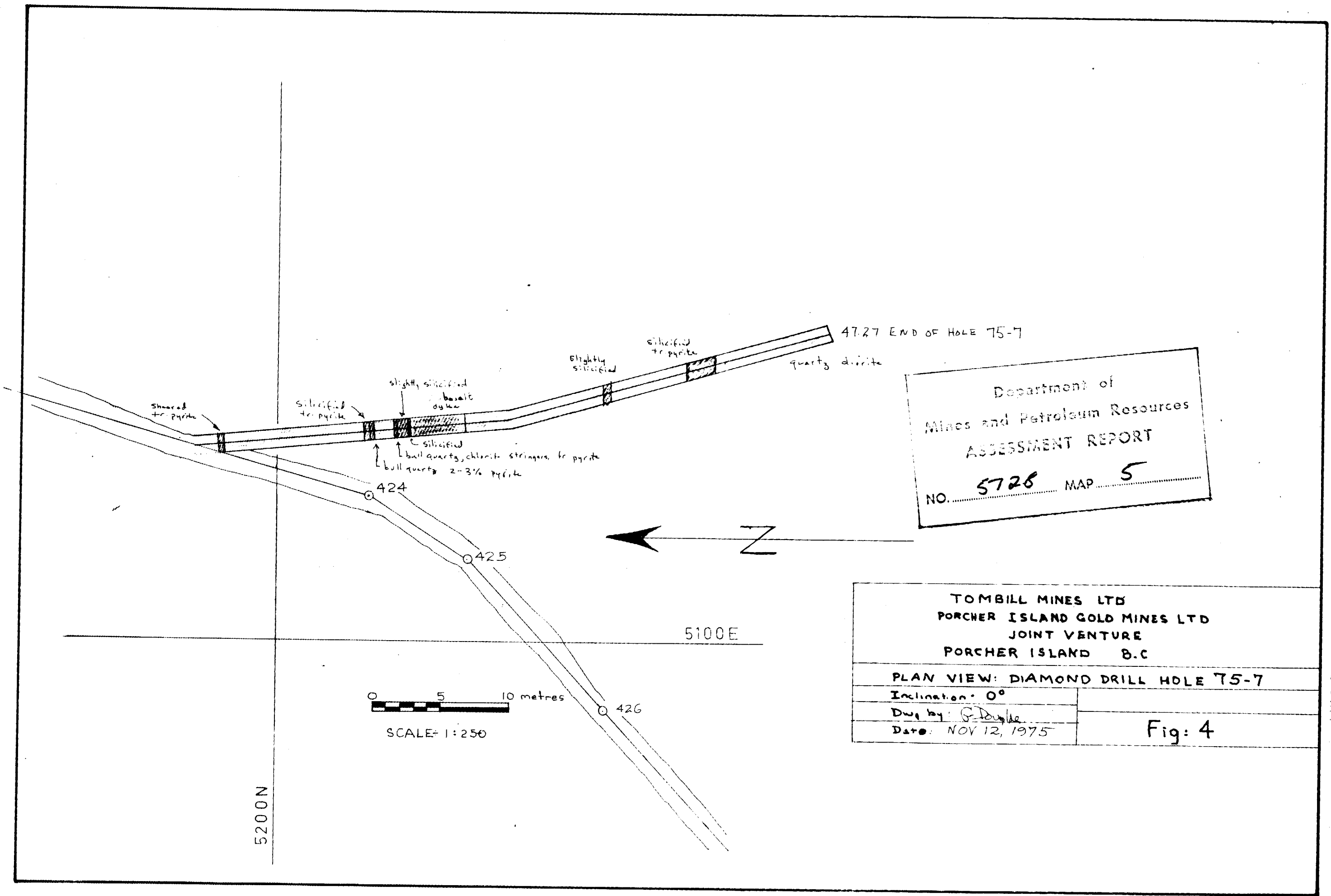




Department of  
 Mines and Petroleum Resources  
 TECHNICAL REPORT  
 NO. 5728 MAP 4

TOMBILL MINES LTD  
 PORCHER ISLAND GOLD MINES LTD  
 JOINT VENTURE  
 PORCHER ISLAND B.C.  
 PLAN SHOWING THE LOCATION OF  
 THE DIAMOND DRILL HOLES AND  
 INTERSECTIONS

Dwg by: G. Dyer	
Date: Nov 12, 1975	
Scale: 1:250	FIG. 3



Department of  
 Mines and Petroleum Resources  
 ASSESSMENT REPORT  
 NO. 5726 MAP 5

TOMBILL MINES LTD PORCHER ISLAND GOLD MINES LTD JOINT VENTURE PORCHER ISLAND B.C.	
PLAN VIEW: DIAMOND DRILL HOLE 75-7	
Inclination: 0°	Fig: 4
Dug by: <u>G. Douke</u> Date: <u>NOV 12, 1975</u>	