

5748

1975 DRILLING REPORT

KEMESS PROPERTY
Omineca Mining Division - B. C.

December, 1975
#5748

G. R. Foye

Department of
Mines and Petroleum Resources
ASSESSMENT REPORT
NO. 5748 IAP

1975 DRILLING REPORT

KEMESS PROPERTY

This report covers some of the diamond drilling done on the Kemess property during 1975. The Kemess property consists of the New Kemess #1 and #2 claim blocks totalling 38 units. Refer to the accompanying index map for the location of these claims.

All of the survey and technical data for the holes is included in the logs which are enclosed with this report. The core logging was done by myself. I have a B.Sc. degree in Geology and have four years of mining exploration experience.

D. W. Coates Enterprises Ltd. was the contractor performing the work on behalf of Getty Mining Pacific, Limited. The contractors invoice for the portion of the drilling submitted for credit is included in this report.

The core is stacked on the property approximately 400 feet north of hole K - 75 - 1.

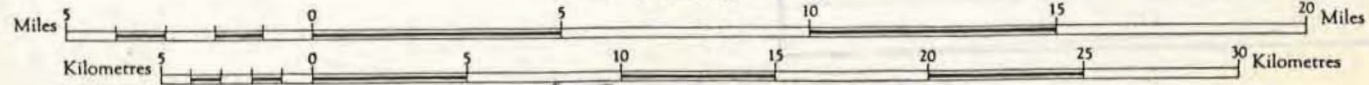
Gary Foye

Gary Foye
Geologist.



Scale 1 : 250,000

1 Inch to 4 Miles Approximately



5748 M-1

TOODOGGONE RIVER
BRITISH COLUMBIA

SHEET 94 E
 FIRST EDITION

D.W. COATES ENTERPRISES LTD.

256A SIMPSON ROAD
RICHMOND, B.C.
V6X 2P9

INVOICE NO.: 902

JOB NO.: 258

DATE: August 11/75

Getty Mines Limited
614 - 510 West Hastings St.
Vancouver, B. C.

RE: Black Lake Area Drilling

PERIOD: July 16 - 31/75

| | |
|-----------------------------------|-------------|
| Drilling Detail | \$21,840.80 |
| Overburden | ✓ 639.17 |
| Transportation | ✓ 586.00 |
| Drilling with Mud | ✓ 2,650.75 |
| Moving, Setting Up & Tearing Down | ✓ 2,213.75 |
| Water Supply | ✓ 139.15 |
| Acid Tests | / 41.70 |
| Cementing | ✓ 319.24 |
| Board & Lodgings | ✓ 1,421.29 |
| Core Splitter | ✓ 20.00 |
| | <hr/> |
| | \$29,871.85 |

Drilling Detail

| <u>Hole #</u> | <u>Size</u> | <u>From</u> | <u>To</u> | <u>Footage</u> | <u>Rate</u> | <u>Amount</u> |
|---------------|-------------|-------------|--------------------|----------------|-------------|----------------------|
| K75 - 1 | BQ | ✓ 163 | 247 ✓ | 84 ✓ | ✓ \$13.30 | \$1117.20 ✓ |
| K75 - 3 | BQ | 0 | 30 | 30 | Field Cost | ----- |
| K75 - 3 | BQ | ✓ 30 | 286 ✓ | 256 ✓ | 13.30 | 3404.80 ✓ |
| K75 - 4 | BQ | ✓ 0 | 500 ✓ | 500 ✓ | 13.30 ✓ | 6650.00 ✓ |
| K75 - 4 | BQ | 500 | 507 607 | 107 ✓ | 13.90 ✓ | 1487.30 ✓ |
| K75 - 5 | BQ | 0 | 26 | 26 | Field Cost | ----- |
| K75 - 5 | BQ | 26 ✓ | 500 ✓ | 474 ✓ | 13.30 | 6304.20 ✓ |
| K75 - 5 | BQ | ✓ 500 | 707 ✓ | 207 ✓ | 13.90 | 2877.30 ✓ |
| | | | | ✓ 1684' | | <u>\$21,840.80 ✓</u> |

Overburden

(a) Labour & Equipment

| <u>Date</u> | <u>Hole #</u> | <u>Memo</u> | <u>ManHours</u> | <u>Drill</u> |
|-------------|---------------|---------------------|-----------------|--------------|
| July 18D | 75 - 3 ✓ | BW Casing 0 - 30' ✓ | 3 ✓ | 3 ✓ |
| July 28D | 75 - 5 | BW Casing 0 - 26' ✓ | 4½ ✓ | 2½ |
| | | | 7½ ✓ | 5½ ✓ |

field cost machine drilling overburden

overburden machine time

| | |
|-----------------------------------|-------------------|
| - Labour: ✓ 7½ hours @ \$11.50/hr | \$86.25 ✓ |
| - Drill: ✓ 5½ hours @ 10.50/hr | 57.75 ✓ |
| | <u>\$144.00 ✓</u> |
| Plus 10% | 14.40 |
| | <u>✓ \$158.40</u> |

(b) Materials

| <u>Date</u> | <u>Hole #</u> | <u>Memo</u> | <u>Amount</u> | |
|------------------|---------------|---|-----------------|-------------------|
| July 31D | 75 - 5 | 1 BW Casing Shoe | \$139.00 | ✓ |
| July 31D | 75 - 5 | 13 2' length BW Casing @17.50 | 227.50 | ✓ |
| | | | <u>366.50</u> | ✓ |
| | | Plus Freight: 180 # @ \$7.00/cwt | 12.60 | ✓ |
| | | | <u>\$379.10</u> | |
| | | Plus 15% | 56.87 | |
| | | Plus Casing Usage Charge: 56' @.80/foot | 44.80 | ✓ |
| | | | <u>44.80</u> | ✓ |
| | | | <u>\$480.77</u> | ✓ |
| Total Overburden | | | | ✓ <u>\$639.17</u> |

Transportation

| | | | | |
|---------|-------------------------------------|---------------|---|-----------------|
| July 10 | Trans - Provincial Airlines # 38673 | \$174.00 | ✓ | |
| July 23 | Trans - Provincial Airlines # 38644 | ✓ 412.00 | | \$586.00 ✓ |
| | | <u>412.00</u> | | <u>\$586.00</u> |

Drilling with Mud

(a) Labour & Equipment

| Date | Memo | ManHours |
|----------|-----------------|--------------------|
| | <i>Quik Gel</i> | <i>Quik Tool</i> |
| | | <i>Cutting Oil</i> |
| July 16D | Mix Mud 7 bags | 5 6 gals. |
| July 16N | " " 6 | 5 7 |
| July 18D | " " 4 | 13 5 |
| July 18N | " " 6 | 4 5 |
| July 19D | " " 5 | 4 4 |
| July 19N | " " 7 | 5 6 |
| July 20D | " " 6 | 5 6 |
| July 20N | " " 6 | 5 7 |
| July 23D | " " 6 | 4 6 |
| July 23N | " " 6 | 5 5 |
| July 24D | " " 7 | 4 7 |
| July 24N | " " 4 | 3 4 |
| July 25D | " " 6 | 3 2 |
| July 25N | " " 6 | 4 5 |
| July 26D | " " 5 | 4 6 |
| July 26N | " " 8 | 5 5 |
| July 28D | " " 6 bags | 3 7 |
| Subtotal | 101 bags | 71 ✓ |

Labour: ✓ 71 hours @ \$11.50/hr ✓
 Plus 10%

\$816.50 ✓
 81.65
\$898.15 ✓

also includes

July 21 D 2
 21 N 3

3

6

106 bags
 Quik Gel

96 bags
 Quik-Tool

field cost items, eg drill muds, were not included with mobilization charges in drill bid, i. must charge freight @ rate of \$ 7.00/cwt. S.A.S

(b) Materials

| | | | |
|----------------------------------|------------------|---|---------------------------|
| ✓ 106 bags Quik Gel @ \$7.50/bag | \$795.00 | ✓ | |
| ✓ 96 bags Quik Trol @ 6.50/bag | 624.00 | ✓ | |
| | <u>\$1419.00</u> | ✓ | |
| Freight: 1500# @ \$7.00/cwt | 105.00 | ✓ | |
| | <u>1524.00</u> | ✓ | |
| Plus 15% | 228.60 | | ✓ <u>\$1752.60</u> |
| Total Drilling with Mud | | | ✓ <u><u>\$2650.75</u></u> |

Moving, Setting Up & Tearing Down

Labour & Equipment

| <u>Date</u> | <u>Memo</u> | <u>ManHours</u> | |
|-------------|--------------------------------|-----------------|---------------------------------------|
| July 17D | Teardown & Move to Hole # 3 | ✓ 34 | 11+11+6+6 |
| July 18D | Finished setup on Hole # 3 | ✓ 17 | 5+5+4+3 |
| July 21N | Teardown on Hole # 3 | ✓ 8 | 4+4 |
| July 22D | Move & Setup on Hole # 4 | ✓ 43 | 11+11+11+10 |
| July 27D | Move & Setup on Hole # 5 | ✓ 38 | 11+11+8+8 |
| July 28D | Finished Setup on Hole # 5 | ✓ 11 | 3+3+3+2 |
| July 31D | Dig out Setup for Hole # 6 | ✓ 24 | 8+8+4+4 |
| | | <u>175</u> | ✓ |
| | Labour: 175 hours @ \$11.50/hr | | \$2012.50 |
| | Plus 10% | | <u>201.25</u> <u><u>\$2213.75</u></u> |

Water Supply

Labour & Equipment

| <u>Date</u> | <u>Memo</u> | <u>ManHours</u> | | |
|-------------|-------------------------------|-----------------|---|-----------------|
| July 18D | Lay waterline | ✓ 1 | | |
| July 22D | Add to waterline | 1 ✓ | | |
| July 28D | " " " " | 1 ✓ | | |
| July 31D | Change waterline location | 8 ✓ | | |
| | | <u>11</u> ✓ | | |
| | Labour: 11 hours @ \$11.50/hr | \$126.50 ✓ | | |
| | Plus 10% | <u>12.65</u> ✓ | ✓ | <u>\$139.15</u> |

Acid Tests

Hole # 75 - 5 1 test @ 707' (3 x \$13.90) ^{ok} ? \$41.70 ✓

Cementing

(a) Labour & Equipment

| <u>Date</u> | <u>Memo</u> | <u>ManHours</u> | | |
|-------------|-------------------------------|-----------------|---|-----------------|
| July 21D | ✓ Cement Hole #3 | 23 | | |
| | Labour: 23 hours @ \$11.50/hr | \$264.50 ✓ | | |
| | Plus 10% | <u>26.45</u> | ✓ | <u>\$290.95</u> |

(b) Materials

add 75-3

| | | |
|-------------------------------------|----------------|--------------------------|
| 1 Bag Cal Seal Cement @ \$19.00/bag | \$19.00 ✓ | |
| Freight: 80# @ \$7.00/cwt | ✓ 5.60 | |
| | <u>24.60</u> ✓ | |
| Plus 15% | 3.69 | \$28.29 ✓ |
| | <u>3.69</u> | |
| Total Cementing | | ✓ <u><u>\$319.24</u></u> |

Board & Lodgings

| | | |
|---|-----------------|------------|
| (a) Labour: D. Ramsay: 96 hours @ \$3.40 | \$326.40 ✓ | |
| <i>96 hrs @ regular hourly rate</i> ✓ 64 hours @ 5.10 ✓ | <u>326.40</u> ✓ | |
| <i>64 hrs @ time & a half rate</i> ¹⁶⁰ | 652.80 ✓ | |
| Plus 15% Benefit | 97.92 | \$750.72 ✓ |
| | <u>97.92</u> | |

| | | |
|--|--------------|------------|
| (b) Groceries: July 8 Goodacres Store # 5497 | \$200.97 ✓ | |
| | 5498 33.87 ✓ | |
| | 5499 37.93 ✓ | \$272.77 ✓ |
| | <u>37.93</u> | |

| | | |
|---------------------------------------|---------------|------------|
| (c) Truck: 100# propane @ \$12.85/cwt | ✓ 12.85 | |
| 135 gals Heating Oil @ \$.47/gal | ✓ 63.45 | |
| | <u>76.30</u> | |
| Plus Freight 1450# @ \$7.00/cwt | 101.50 | \$177.80 ✓ |
| | <u>101.50</u> | |

| | | |
|---|--------------|--|
| (d) Camp Rental: 2 sleep units - ½ mo. @ \$100.00/mo/ea | \$100.00 ✓ | |
| 1 office unit - ½ mo. @ 90.00/mo | 45.00 ✓ | |
| 1 kitchen unit - ½ mo. @ 150.00/mo | 75.00 ✓ | |
| | <u>75.00</u> | |

\$220.00
✓ \$1421.29

Core Splitter

July 10 - 31

-

2/3 mo. @ \$30.00/mo

/\$20.00

OK

GETTY MINES, LIMITED

Hole Number

K-75-5

DRILL HOLE LOG

| FROM | TO | DESCRIPTION | SAMPLE NUMBER | FOOTAGE | | CORE LGTH | ASSAY | | | | |
|------|----|--|---------------|---------|-----|-----------|-------|------|-------------|-------------|--|
| | | | | FROM | TO | | Cu.% | Mo% | Ag (oz/ton) | Au (oz/ton) | |
| | | 353' - soft, broken-fault zone. | | | | | | | | | |
| | | | 3666 | 620 | 630 | 10.0 | .028 | .002 | .08 | .003 | |
| | | 310' - 315' - Mainly light coloured siliceous rock with dark patches. | 3667 | 630 | 640 | 9.9 | .010 | | | | |
| | | | 3668 | 640 | 650 | 10.0 | .041 | .003 | .09 | .002 | |
| | | 435' - Pyrite very abundant. | 3669 | 650 | 660 | 9.7 | .034 | | | | |
| | | | 3670 | 660 | 670 | 10.0 | .038 | .002 | .10 | .003 | |
| | | Pinkish gypsum abundant in places. | 3671 | 670 | 680 | 10.0 | .034 | | | | |
| | | | 3672 | 680 | 690 | 9.8 | .020 | .002 | .08 | .002 | |
| | | 496' - 505' - Abundant gypsum. | 3673 | 690 | 700 | 10.0 | .048 | | | | |
| | | | 3674 | 700 | 707 | 7.0 | .034 | | | | |
| | | 524' - 525' - Distinct feldspar laths. | | | | | | | | | |
| | | 590' - 630' - Generally softer and more broken than normal. | | | | | | | | | |
| | | Possible fault zones at 598', 607', 625'. | | | | | | | | | |
| | | | | | | | | | | | |
| | | 602' - Possibly a speck of chalco. | | | | | | | | | |
| | | 638' - 640' - Very abundant gypsum. | | | | | | | | | |
| | | From approx. 630' purple fluorite appears in places. Generally abundant 679'-684'. | | | | | | | | | |
| | | Except for the top few feet of syenite the rock throughout the hole is probably a silicified andesite porphyry. Phenocrysts of plagioclase laths are clearly visible in only a few places, however. Chlorite common along fractures and in the groundmass. From about 150' talc is common along fractures. Gypsum is abundant throughout the hole. Quartz veining minor. | | | | | | | | | |
| | | Pyrite abundant throughout but only a couple of specks of chalco noted. Magnetite not detected in the andesite. | | | | | | | | | |
| | | END OF HOLE 707'. | | | | | | | | | |

CORE RECOVERY - 99.5%

GETTY MINES, LIMITED

Hole Number

K-75-5

DRILL HOLE LOG

| FROM | TO | DESCRIPTION | SAMPLE NUMBER | FOOTAGE | | CORE LGTH | ASSAY | | | |
|------|----|---|---------------|---------|-----|-----------|-------|------|-------------|-------------|
| | | | | FROM | TO | | Cu % | Mo % | Ag (oz/ton) | Au (oz/ton) |
| | | 139.5' - Abundant pyrite in quartz for 2 inches. | | | | | | | | |
| | | 159.5' - Abundant pyrite in quartz for 6 inches. | 3632 | 280 | 290 | 10.0 | .020 | .003 | .06 | .004 |
| | | | 3633 | 290 | 300 | 10.7 | .029 | | | |
| | | A light green coloured, very soft mineral - probably talc, | 3634 | 300 | 310 | 10.0 | .045 | .002 | .08 | .007 |
| | | occurs in places along fractures and veins - becoming abundant | 3635 | 310 | 320 | 9.7 | .025 | | | |
| | | in places, e.g. 155' - 157'. | 3636 | 320 | 330 | 9.8 | .048 | .002 | .10 | .003 |
| | | | 3637 | 330 | 340 | 10.3 | .049 | | | |
| | | Chalco not abundant - a couple of specks noted around 128'. | 3638 | 340 | 350 | 10.0 | .062 | .002 | .08 | .005 |
| | | | 3639 | 350 | 360 | 10.0 | .049 | | | |
| | | No detectable magnetite. | 3640 | 360 | 370 | 9.9 | .051 | .001 | .11 | .004 |
| | | | 3641 | 370 | 380 | 9.8 | .053 | | | |
| | | 161' - 165' - Pyrite very abundant - associated with quartz and talc. | 3642 | 380 | 390 | 10.0 | .055 | .003 | .12 | .003 |
| | | | 3643 | 390 | 400 | 9.9 | .058 | | | |
| | | Starting at 175' some sections become a uniform gray colour. | 3644 | 400 | 410 | 9.8 | .058 | .004 | .12 | .005 |
| | | Some of these sections contain darker patches that are possibly | 3645 | 410 | 420 | 10.0 | .063 | | | |
| | | altered fragments - but more likely the rock is just highly | 3646 | 420 | 430 | 10.5 | .058 | .003 | .10 | .004 |
| | | silicified and the dark patches are unsilicified. | 3647 | 430 | 440 | 9.9 | .045 | | | |
| | | | 3648 | 440 | 450 | 9.9 | .042 | .006 | .09 | .005 |
| | | From 230' some of the gypsum has a pinkish colour. | 3649 | 450 | 460 | 9.9 | .062 | | | |
| | | | 3650 | 460 | 470 | 10.0 | .073 | .002 | .07 | .007 |
| | | 242.5' of soft gouge material. | 3651 | 470 | 480 | 10.0 | .065 | | | |
| | | | 3652 | 480 | 490 | 10.0 | .078 | .002 | .08 | .006 |
| | | Talc still occurring - abundantly in places, e.g. 293'. | 3653 | 490 | 500 | 9.9 | .070 | | | |
| | | | 3654 | 500 | 510 | 9.7 | .080 | .003 | .09 | .004 |
| | | Silicification moderate to extreme. | 3655 | 510 | 520 | 10.0 | .062 | | | |
| | | | 3656 | 520 | 530 | 10.0 | .063 | .003 | .08 | .005 |
| | | 277' - Fault at 45°. | 3657 | 530 | 540 | 10.2 | .047 | | | |
| | | | 3658 | 540 | 550 | 9.8 | .062 | .005 | .09 | .007 |
| | | An occasional quartz vein but gypsum veining still predominates. | 3659 | 550 | 560 | 9.9 | .092 | | | |
| | | | 3660 | 560 | 570 | 10.0 | .067 | .002 | .08 | .007 |
| | | Pyrite common (2-3%) but still no noticeable chalco. | 3661 | 570 | 580 | 9.9 | .050 | | | |
| | | | 3662 | 580 | 590 | 10.0 | .053 | .003 | .08 | .008 |
| | | Feldspar lath phenocrysts visible (faintly) in places. Other sections | 3663 | 590 | 600 | 10.0 | .049 | | | |
| | | spotty with dark patches in light material. | 3664 | 600 | 610 | 10.0 | .038 | .002 | .07 | .005 |
| | | | 3665 | 610 | 620 | 10.0 | .018 | | | |

GETTY MINES, LIMITED

Hole Number

K-75-4

DRILL HOLE LOG

| FROM | TO | DESCRIPTION | SAMPLE NUMBER | FOOTAGE | | CORE LGTH | ASSAY | | | |
|------|------|---|---------------|---------|-----|-----------------|-------|-------|-------------|-------------|
| | | | | FROM | TO | | Cu% | Mo% | Ag (oz/ton) | Au (oz/ton) |
| | | The dioritic material is fine to medium-grained with chloritized mafic material. | 3572 | 270 | 280 | 9.9 | .108 | .022 | .09 | .010 |
| | | | 3573 | 280 | 290 | 10.0 | .081 | | | |
| | | | 3574 | 290 | 300 | 10.0 | .140 | .016 | .09 | .012 |
| | | 122' - Abundant pinkish zeolite? and a 1/8" pyrite vein. | 3575 | 300 | 310 | 9.9 | .167 | | | |
| | | | 3576 | 310 | 320 | 10.0 | .240 | .024 | .13 | .023 |
| | | Only a very occasional speck of chalco noted. Possibly some black, earthy chalcocite associated with pyrite in places. | 3577 | 320 | 330 | 9.9 | .247 | | | |
| | | | 3578 | 330 | 340 | 9.8 | .135 | .018 | .09 | .010 |
| | | | 3579 | 340 | 350 | 9.8 | .123 | | | |
| | | The section of diorite appearing rock is actually quite short with many gradations. By 105' at least the rock appears to be mainly andesite. | 3580 | 350 | 360 | 9.9 | .098 | .008 | .07 | .007 |
| | | | 3581 | 360 | 370 | 10.1 | .103 | | | |
| | | | 3582 | 370 | 380 | 9.8 | .095 | .032 | .08 | .009 |
| | | | 3583 | 380 | 390 | 9.7 | .155 | | | |
| 105' | 607' | ANDESITE PORPHYRY | 3584 | 390 | 400 | 10.2 | .149 | .010 | .09 | .010 |
| | | Phenocrysts of plagioclase laths the same as previously but in some sections the rock is silicified which tends to partly or completely mask the porphyritic texture. | 3585 | 400 | 410 | 9.8 | .100 | | | |
| | | | 3586 | 410 | 420 | 9.4 | .157 | .010 | .09 | .009 |
| | | | 3587 | 420 | 430 | 10.2 | .115 | | | |
| | | | 3588 | 430 | 440 | 9.8 | .165 | .013 | .09 | .008 |
| | | At approximately 150' the rock becomes very competent and unbroken. | 3589 | 440 | 450 | 9.6 | .195 | | | |
| | | | 3590 | 450 | 460 | 9.8 | .080 | .003 | .08 | .012 |
| | | | 3591 | 460 | 470 | 10.0 | .127 | | | |
| | | Gypsum stringers and veins extremely common. | 3592 | 470 | 480 | 9.9 | .085 | .003 | .09 | .009 |
| | | | 3593 | 480 | 490 | 10.0 | .071 | | | |
| | | 155' - 3" of gypsum. Gypsum stringers and veins range from having a very flat dip to being at a high angle to the core axis. | 3594 | 490 | 500 | 9.6 | .055 | .004 | .08 | .007 |
| | | | 3595 | 500 | 510 | 9.9 | .079 | | | |
| | | | 3596 | 510 | 520 | 10.0 | .065 | .003 | .07 | .006 |
| | | Pyrite moderately abundant - especially in some of the larger quartz veins. Pyrite also occurs disseminated and along fractures. | 3597 | 520 | 530 | 9.9 | .035 | | | |
| | | | 3598 | 530 | 540 | 10.0 | .018 | .002 | .07 | .005 |
| | | | 3599 | 540 | 550 | 10.8 | .062 | | | |
| | | Pinkish zeolites(?) in places: e. g. 175' & 228' - associated with gypsum veining. | 3600 | 550 | 560 | 9.7 | .055 | .003 | .09 | .006 |
| | | | 3601 | 560 | 570 | 9.7 | .071 | | | |
| | | | 3602 | 570 | 580 | 9.6 | .076 | .005 | .08 | .006 |
| | | Some chlorite associated with gypsum in places - e. g. 196', 212' | 3603 | 580 | 590 | 10.0 | .065 | | | |
| | | | 3604 | 590 | 600 | 10.0 | .068 | .003 | .08 | .005 |
| | | | 3605 | 600 | 607 | 6.8 | .068 | | | |
| | | | | | | CORE RECOVERY = | | 93.6% | | |

DRILL HOLE LOG

Property..... KEMESS
 Location..... OMINECA MINING DIVISION - B. C.
 Grid... USING KENNECO DDH KX-2 AS ORIGIN
 Latitude... 5 + 40 N
 Departure... 14 + 50 W

Core Size..... BQ
 Elev. Collar... 5570
 Bearing.....
 Dip..... 90°
 Length..... 707'
 Horiz. Trace.....
 Vert. Trace.....

Starting Date... JULY 28, 1975
 Completion Date... JULY 31, 1975
 Date Logged... JULY 29 - JULY 31, 1975
 Logged by... GARY FOYE
Gary Foye

Dip Tests

| Depth | Angle | |
|--------|-------|--------|
| | Read | Actual |
| Collar | | |
| | | |
| | | |
| | | |
| | | |

| FROM | TO | DESCRIPTION | SAMPLE NUMBER | FOOTAGE | | CORE LGTH. | ASSAY | | | |
|-------|-------|--|---------------|---------|-----|------------|-------|------|-------------|-------------|
| | | | | FROM | TO | | Cu% | Mo% | Ag (oz/ton) | Au (oz/ton) |
| 0 | 25.5' | OVERBURDEN | 3606 | 25.5 | 30 | 4.4 | .018 | | | |
| | | | 3607 | 30 | 40 | 9.9 | .011 | .002 | .07 | .004 |
| 25.6' | 41' | SYENITE PORPHYRY | 3608 | 40 | 50 | 9.5 | .048 | | | |
| | | Pink, fine to medium grained rocks. Small feldspar phenocrysts | 3609 | 50 | 60 | 9.9 | .045 | .001 | .07 | .006 |
| | | general and mafic (hornblende) phenocrysts common in places. | 3610 | 60 | 70 | 10.0 | .055 | | | |
| | | Gypsum stringers, veins and patches common throughout. | 3611 | 70 | 80 | 9.6 | .040 | .001 | .06 | .006 |
| | | Minor iron oxides to about 27%. | 3612 | 80 | 90 | 9.6 | .011 | | | |
| | | Perhaps a speck of pyrite noted - otherwise no mineralization | 3613 | 90 | 100 | 10.0 | .015 | .003 | .07 | .005 |
| | | except minor magnetite. | 3614 | 100 | 110 | 9.5 | .022 | | | |
| | | | 3615 | 110 | 120 | 10.3 | .038 | .002 | .06 | .005 |
| 41 | 707 | ALTERED PORPHYRITIC ANDESITE | 3616 | 120 | 130 | 10.0 | .030 | | | |
| | | Plagioclase laths only discernible in places, otherwise the rock | 3617 | 130 | 140 | 10.3 | .038 | .002 | .07 | .005 |
| | | is too well silicified. | 3618 | 140 | 150 | 9.6 | .032 | | | |
| | | 41'-42' Fault Zone. At top end an extremely smooth surface at | 3619 | 150 | 160 | 9.7 | .013 | .002 | .08 | .004 |
| | | 45°, and then a foot of soft material. | 3620 | 160 | 170 | 10.0 | .020 | | | |
| | | 45' - another gouge zone. | 3621 | 170 | 180 | 9.9 | .038 | .002 | .07 | .006 |
| | | Pyrite abundant in veins and disseminations. | 3622 | 180 | 190 | 10.0 | .028 | | | |
| | | Some chlorite on fractures and in the groundmass. | 3623 | 190 | 200 | 10.0 | .038 | .003 | .08 | .006 |
| | | Quartz veining and stringers common. | 3624 | 200 | 210 | 9.4 | .063 | | | |
| | | Generally very broken and crumbly down to about 53'. | 3625 | 210 | 220 | 10.0 | .031 | .002 | .10 | .006 |
| | | An occasional stringer or patch of gypsum. | 3626 | 220 | 230 | 9.8 | .038 | | | |
| | | Starting at 53' the rock becomes much more competent but some | 3627 | 230 | 240 | 10.0 | .047 | .002 | .11 | .006 |
| | | short sections still broken. | 3628 | 240 | 250 | 10.0 | .048 | | | |
| | | 71' - Small high angle fault. | 3629 | 250 | 260 | 10.0 | .040 | .001 | .09 | .005 |
| | | 127' - 130' Dark patches (1/8" - 3/4") in lighter coloured material. | 3630 | 260 | 270 | 10.2 | .041 | | | |
| | | | 3631 | 270 | 280 | 10.3 | .035 | .018 | .05 | .005 |

GETTY MINES, LIMITED

Hole Number

K-75-4

DRILL HOLE LOG

Property, KEMESS
 Location, OMINECA MINING DIVISION - B. C.
 Grid, USING KENNECO DDH KX-2 AS ORIGIN
 Latitude, 1 + 95 N
 Departure, 12 + 25 W

Core Size, BQ
 Elev. Collar, 5570
 Bearing, 7
 Dip, 90°
 Length, 607 FEET
 Horiz. Trace,
 Vert. Trace,

Starting Date, JULY 23/75
 Completion Date, JULY 27/75
 Date Logged, JULY 24 - JULY 27/75
 Logged by, GARY FOYE

Gary Foye

| Dip Tests | | |
|-----------|-------|--------|
| Depth | Angle | |
| | Read | Actual |
| Collar | | |
| | | |
| | | |
| | | |
| | | |

| FROM | TO | DESCRIPTION | SAMPLE NUMBER | FOOTAGE | | CORE LGTH. | ASSAY | | | | |
|------|------|---|---------------|---------|-----|------------|-------|------|-------------|-------------|--|
| | | | | FROM | TO | | Cu% | Mo% | Ag (oz/ton) | Au (oz/ton) | |
| 0 | 12 | OVERBURDEN | 3546 | 12' | 20' | 7 | .047 | | | | |
| | | | 3547 | 20 | 30 | 9.8 | .048 | .004 | .12 | .010 | |
| 12' | 81 | ANDESITE PORPHYRY | 3548 | 30 | 40 | 9.8 | .053 | | | | |
| | | Plagioclase laths set in a dark, fine-grained matrix. The laths | 3549 | 40 | 50 | 8.2 | .051 | .005 | .08 | .009 | |
| | | are generally randomly oriented but in places they show a slight | 3550 | 50 | 60 | 8.0 | .048 | | | | |
| | | preferred orientation. Some sections very silicified masking the | 3551 | 60 | 70 | 8.5 | .102 | .005 | .10 | .010 | |
| | | porphyritic texture. | 3552 | 70 | 80 | 8.8 | .082 | | | | |
| | | | 3553 | 80 | 90 | 8.6 | .153 | .007 | .09 | .009 | |
| | | Rock oxidized to about 82'. Limonites abundant, mainly on | 3554 | 90 | 100 | 8.0 | .168 | | | | |
| | | fractures to 82' - also on veins. Minor unoxidized pyrite in this zone. | 3555 | 100 | 110 | 5.3 | .210 | .005 | .09 | .010 | |
| | | Some disseminated magnetite. | 3556 | 110 | 120 | 9.3 | .182 | | | | |
| | | | 3557 | 120 | 130 | 4.5 | .115 | .008 | .09 | .009 | |
| | | Around 18' some very soft sections. | 3558 | 130 | 140 | 6.5 | .127 | | | | |
| | | | 3559 | 140 | 150 | 6.3 | .102 | .007 | .11 | .014 | |
| | | 30° a common fracture angle. Veins commonly quite steep. | 3560 | 150 | 160 | 10.0 | .202 | | | | |
| | | | 3561 | 160 | 170 | 10.0 | .158 | .016 | .13 | .007 | |
| | | Siliceous sections usually vuggy. | 3562 | 170 | 180 | 10.4 | .165 | | | | |
| | | | 3563 | 180 | 190 | 9.7 | .085 | .010 | .11 | .011 | |
| 81 | 105' | Mixture - dioritic appearing rock grading to andesite porphyry. | 3564 | 190 | 200 | 10.4 | .105 | | | | |
| | | | 3565 | 200 | 210 | 9.8 | .150 | .012 | .15 | .011 | |
| | | 81' - 107' extremely broken. | 3566 | 210 | 220 | 9.8 | .155 | | | | |
| | | | 3567 | 220 | 230 | 9.7 | .173 | .012 | .14 | .010 | |
| | | Pyrite abundant in places along fractures, disseminated and in veins. | 3568 | 230 | 240 | 9.9 | .140 | | | | |
| | | | 3569 | 240 | 250 | 10.0 | .145 | .026 | .12 | .012 | |
| | | | 3570 | 250 | 260 | 9.9 | .187 | | | | |
| | | | 3571 | 260 | 270 | 9.4 | .103 | .013 | .10 | .012 | |

GETTY MINES, LIMITED

Hole Number

K-75-3

DRILL HOLE LOG

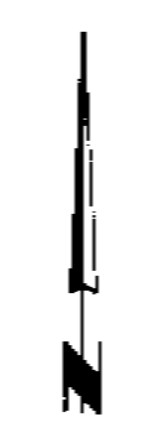
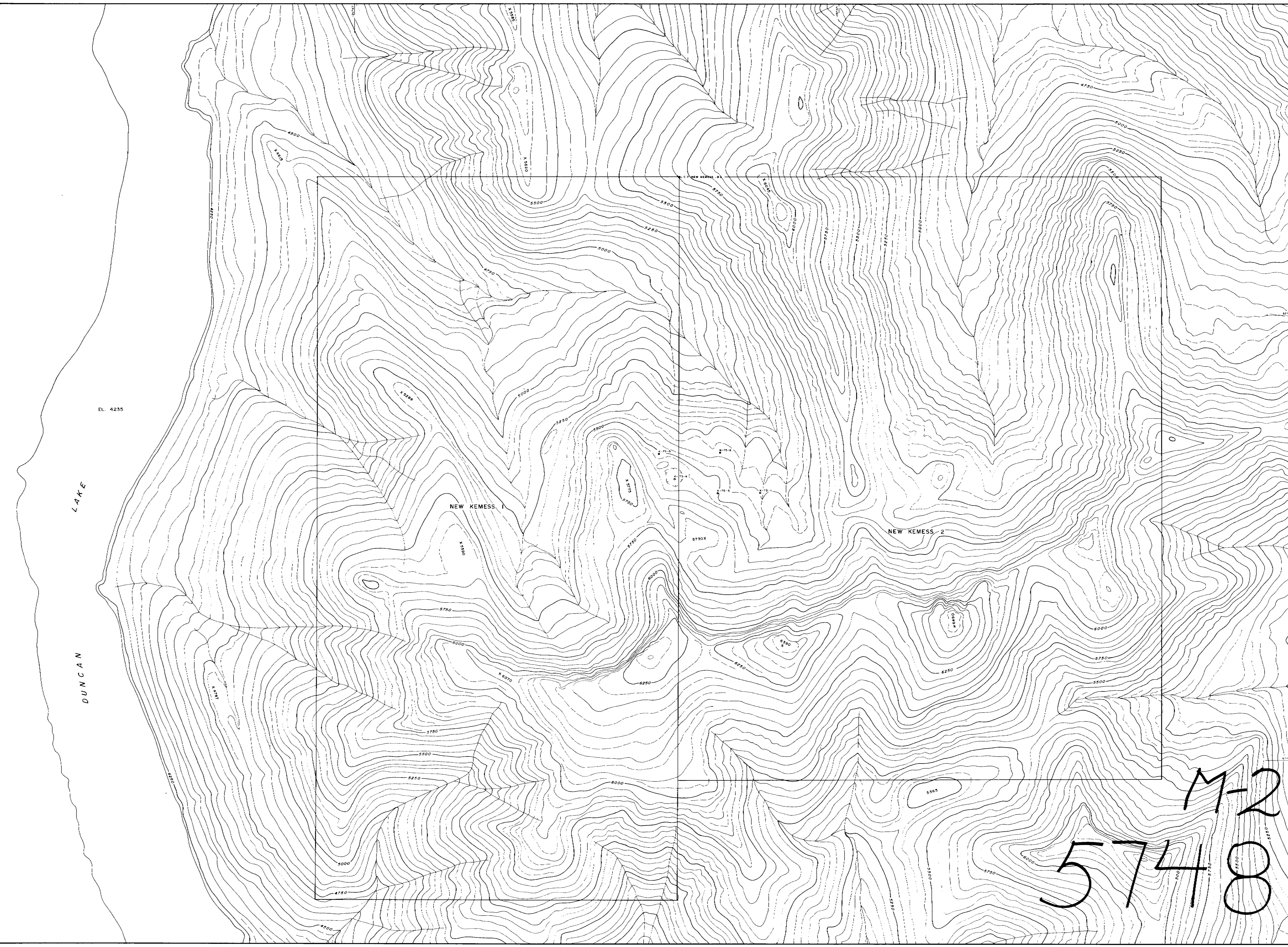
Property: KEMESS
 Location: OMINECO MINING DIVISION-B. C.
 Grid: USING KENNECO DDH KX-2 AS ORIGIN
 Latitude: 0 + 10 N
 Departure: 6. f. 50. W

Core Size: BQ
 Elev. Collar: 5580'
 Bearing: 90°
 Dip: 90°
 Length: 284.5 FEET
 Horiz. Trace:
 Vert. Trace:

Starting Date: JULY 18, 1975
 Completion Date: JULY 21, 1975
 Date Logged: JULY 18 - JULY 22/75
 Logged by: GARY FOYE
Gary Foye

| Dip Tests | | |
|-----------|-------|--------|
| Depth | Angle | |
| | Read | Actual |
| Collar | | |
| | | |
| | | |
| | | |
| | | |

| FROM | TO | DESCRIPTION | SAMPLE NUMBER | FOOTAGE | | CORE LGTH. | ASSAY | | | | |
|------|------|---|---------------------|---------|-----|------------|-------|------|-------------|-------------|--|
| | | | | FROM | TO | | Cu% | Mo% | Ag (oz/ton) | Au (oz/ton) | |
| 0 | 30' | OVERBURDEN | 3521 | 30 | 40 | 7.1 | .080 | | | | |
| 30 | 182' | PORPHYRITIC ANDESITE | 3522 | 40 | 50 | 8.2 | .057 | .006 | .08 | .014 | |
| | | Similar to K-75-1: Plagioclase laths in a dark (green to black), | 3523 | 50 | 60 | 9.7 | .133 | .005 | .09 | .015 | |
| | | fine-grained groundmass. | 3524 | 60 | 70 | 9.2 | .258 | | | | |
| | | 30' - 34' generally bleached. | 3525 | 70 | 80 | 8.6 | .220 | .004 | .07 | .008 | |
| | | | 3526 | 80 | 90 | 7.4 | .079 | | | | |
| | | Iron oxides down to about 59'. Mainly along fractures and quartz | 3527 | 90 | 100 | 9.8 | .169 | .003 | .08 | .014 | |
| | | veins. | 3528 | 100 | 110 | 7.0 | .388 | | | | |
| | | | 3529 | 110 | 120 | 8.8 | .346 | .004 | .08 | .017 | |
| | | | 3530 | 120 | 130 | 8.6 | .258 | | | | |
| | | Small gouge zones at 47' and 51'. | 3531 | 130 | 140 | 8.0 | .200 | .004 | .08 | .010 | |
| | | | 3532 | 140 | 150 | 7.2 | .153 | | | | |
| | | At 33' possibly some copper staining along pyrite (oxidized) | 3533 | 150 | 160 | 8.8 | .196 | .004 | .05 | .012 | |
| | | stringer. | 3534 | 160 | 170 | 6.6 | .175 | | | | |
| | | | 3535 | 170 | 180 | 6.0 | .132 | .004 | .05 | .012 | |
| | | Rock is hard but badly broken. | 3536 | 180 | 190 | 9.8 | .168 | | | | |
| | | | 3537 | 190 | 200 | 11.0 | .189 | .004 | .08 | .010 | |
| | | Quartz stringers & veins (up to 1/4") in places. Minor zeolites. | 3538 | 200 | 210 | 9.6 | .143 | | | | |
| | | | 3539 | 210 | 220 | 7.0 | .153 | .004 | .09 | .011 | |
| | | Very finely disseminated chalco in places. e. g. at 34'. | 3540 | 220 | 230 | 9.5 | .316 | | | | |
| | | | 3541 | 230 | 240 | 3.6 | .329 | .004 | .10 | .014 | |
| | | Fracturing at 30° - 45° common. | 3542 | 240 | 250 | 6.6 | .272 | | | | |
| | | | 3543 | 250 | 260 | 5.9 | .251 | .005 | .10 | .013 | |
| | | After iron oxides ends, pyrite occurs disseminated, along fractures | 3544 | 260 | 270 | 4.7 | .253 | | | | |
| | | and in veins. | 3545 | 270 | 280 | 2.7 | .315 | | | | |
| | | | CORE RECOVERY + 76% | | | | | | | | |



EL. 4235

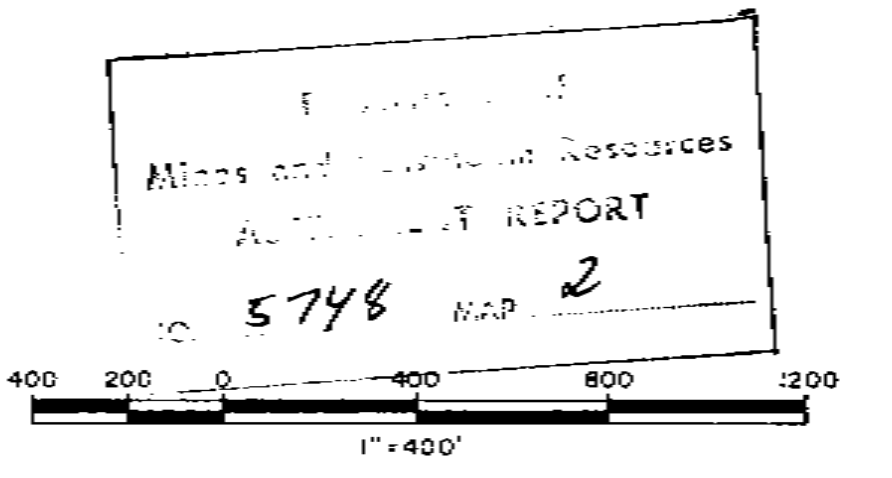
LAKE

DUNCAN

NEW KEMESS 1

NEW KEMESS 2

M2
5748



Getty Mines, Limited
KEMESS PROPERTY
OMINECA MINING DIVISION - BRITISH COLUMBIA

DRILL HOLE PLAN

| | | |
|------------------------|---------|----------|
| DRAWN BY: J.M. Maloney | JOB No. | FIG. No. |
| CHECKED BY: C. Hays | | |
| DATE: Dec. 11, 1975 | | |
| NTS | | |