

UMEX

UNION MINIERE EXPLORATIONS
AND MINING CORPORATION LIMITED

SUITE 200 - 4299 CANADA WAY
BURNABY, B.C. V5G 1H4

TELEPHONE 437-9491

ASSESSMENT REPORT

ON

DIAMOND DRILLING

on

REM MINERAL CLAIMS 21, 34, 36

(HAHA GROUP I - HAHA GROUP II)

Record Nos. 119786, 119799, 119801

Omineca Mining Division, British Columbia

56° North, 125° 28' West

5751

by

A.M. Pauwels

A.A. Burgoyne, P.Eng.

Work Dates: June 10 - October 1, 1975

Date: December 19, 1975

Owner: Union Miniere Explorations and
Mining Corporation Limited

Department of
Mines and Petroleum Resources
ASSESSMENT REPORT

NO. 5751 MAP.....

CONTENTS

	Page
INTRODUCTION	1
DRILLING	1
STATEMENT OF EXPENDITURES	3
APPENDIX - DIAMOND DRILL LOGS	

Figures

	following page
FIGURE 1 Location of REM Claims (1/250,000)	1
FIGURE 2 Location of Diamond Drill Holes (1/9,600)	in pocket

ASSESSMENT REPORT ON DIAMOND DRILLING
ON REM MINERAL CLAIMS 21, 34, 36
(HAHA GROUP I - HAHA GROUP II)

INTRODUCTION

The Rem claims are situated 56 km northwest of Germansen Landing and 20 km southwest of the Omineca access road where it crosses the Osilinka River.

All equipment, supplies, and personnel were brought in from the Omineca access road by helicopter (Bell 206-B, Northern Mountain Helicopters, Prince George, B.C.) chartered from Germansen Landing or Johanson Lake. Drill moves were made by helicopter and weekly supplies also were flown in by helicopter.

DRILLING

A total of four holes (477.3 m) were drilled on the property. Holes T16 and T19 are submitted for assessment work on Haha Group I, and Hole T17 is submitted for Haha Group II.

In 1973 geological, magnetic, and geochemical surveys were submitted for assessment work (Report No. 4737). In 1974, drilling was also submitted for assessment purposes.

Location of the drill holes in respect to the claims is illustrated in Figure 2. Location, altitude, attitude, and description of the drill holes is given on the drill log records (in Appendix).

The following table summarizes the drilling data.

Hole	Start	Finish	Depth	Angle	Direction
T16	June 14	July 4	119.4 m	-45°	SW, N52°E
T17	July 5	Aug. 1	117.3 m	-90°	
T18	Aug. 12	Sept. 2	120.6 m	-45°	SW, N52°E
T19	Sept. 3	Sept. 28	120 m	-45°	SW, N52°E

The holes were drilled by a two-man UMEX crew with a Longyear-24 standard drilling rig in AW size.

The core of Hole T17 is stored near the collar of the hole; the core of Hole T16 is stored on the property near campsite 1 (see Figure 2); and the core of Hole T19 is stored at 930 Railway Avenue, Richmond, B.C.

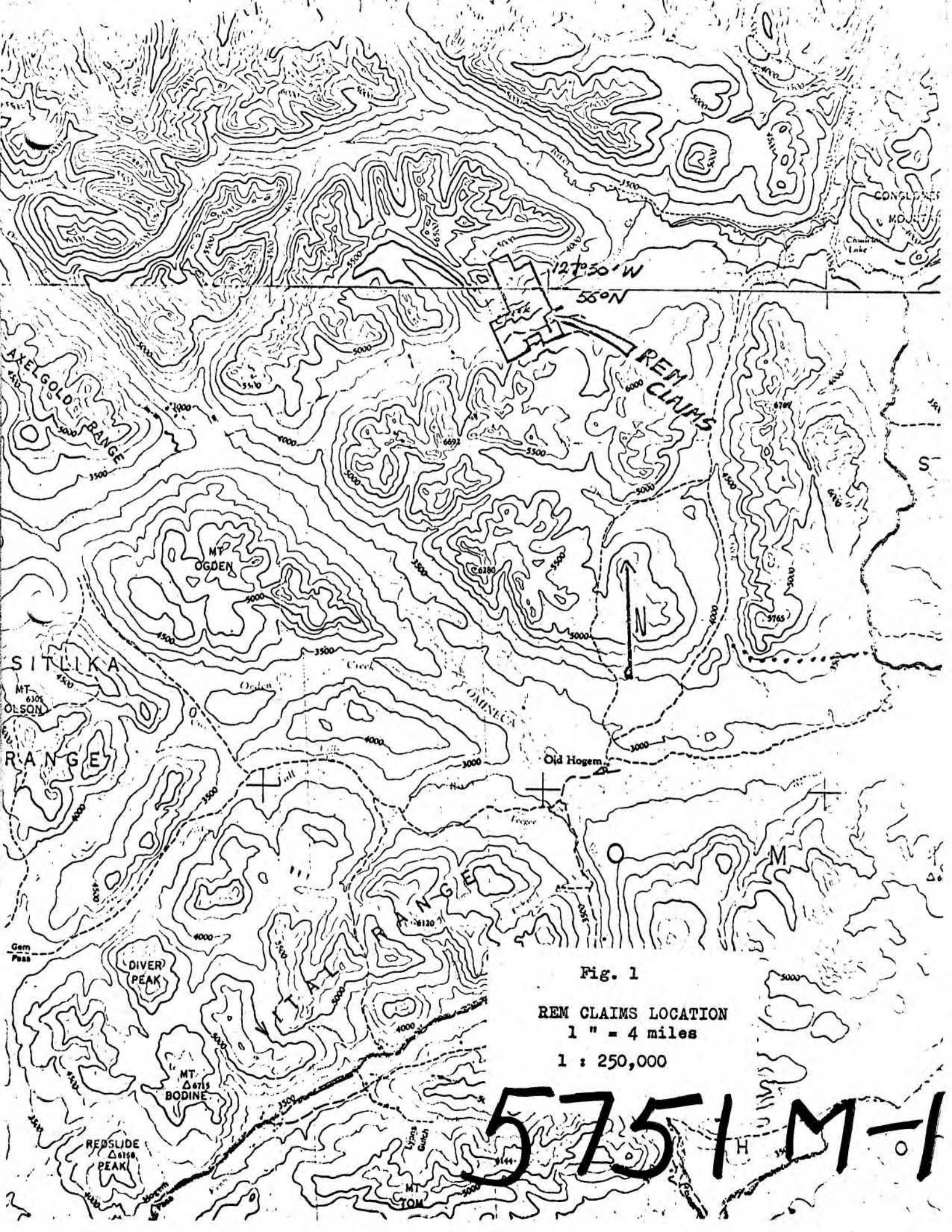


Fig. 1

REM CLAIMS LOCATION
1" = 4 miles
1 : 250,000

5751 M-1

Respectfully submitted,

Andre M. Pauwels

Alfred A. Burgoyne

Alfred A. Burgoyne, P.Eng.

STATEMENT OF EXPENDITURES

Drilling was done from June 10 to October 1, 1975: total 477.3 m.
 Costs for holes are calculated from price per meter of total drilling.

Personnel - field:

B. Morehouse - June 10-Aug. 1, Aug. 12-Oct. 1, 104 days @ \$65.66/day	\$ 6,828.64
P. Salmi - June 10-Aug. 1, Aug. 12-Oct. 1, 104 days @ \$43.08/day	4,480.32
A. Pauwels - June 11, 20, 26, July 1, 11, 19, Aug. 1, Sept. 3, 1975 - 8 days @ \$81.93/day	655.44
Food and lodging for field personnel - 216 days @ \$10/day	2,160.00
Helicopter (mobilization, moving, supplies) Northern Mountain Helicopters Inc., Prince George - 20 hrs. @ \$326.50/hr.	6,530.00
Diamond Drilling Equipment:	
104 days used on project)	
145 days total use 1975)	$\frac{104 \times 33 \frac{1}{3} \times \$9,000}{145 \times 100}$
Estimated cost \$9,000)	2,151.51
Depreciation 33 1/3%/year)	
Diamond Bit Costs: 52 bits @ \$56.90/bit (average cost diamond)	2,958.80
Fuel:	750.00
Core logging, maps, reports: A. Pauwels, Dec. 15-18, 4 days @ \$74.93/day	299.72
	<hr/>
TOTAL	\$26,814.43
	<hr/> <hr/>

$$= \frac{26,814.43}{477.30} = \$56.18/\text{meter}$$

Value of Assessment Work applied to:

Haha Group I - T16 119.4 m)	\$13,449.49
- T19 120 m)	
Haha Group II - T17 117.3 m	\$ 6,589.91

UNION MINIERE EXPLORATIONS AND MINING CORPORATION LIMITED
DRILL RECORD.

AREA REM

Hole No. T 16

Depth: 119.4m

Drilled By: R. Morehouse

ANOMALY:

Bearing and Dip: -45° to SW

Started: June 10/75

Machine: Longyear-24

Described By:

CLAIM: Rem 34

Local Coord. X= $N52^{\circ}E$ Y= 2W Z=

Completed: July 4/75

Diam Drill: A

A. Pauwels

Depth m		%	Description & Lithology	Mineralization	Dip	No. of Samp
From	To	Core				
0	2.7		Overburden.			
2.7	53.7		Medium-to-coarse grained monzonite, pink and white feldspars, biotite, hornblende (10-30% mafics), minor sericite in small pods, minor hematite. Some small sections have lineation of biotites. At 3.6, 4 cm of disseminated pyrite in and near quartz vein. At 17.7, 27.3, malachite stain on fracture. At 21.3, 28.8 calcite and epidote.			
53.7	60.9		Medium-to-fine grained pink-to-grey syenite, equigranular, K-feldspar (50-60%), sericite 30%, quartz 5%. Finely disseminated pyrite, chalcopyrite, minor bornite, also quartz veins with pyrite, minor hematite. This is probably younger dyke into monzonite.			
60.9	65.7		Monzonite as above.			
65.7	119.4		Fine grained foliated rock (syenite) composed of sericite, K-feldspar, minor calcite, biotite and epidote.			
			End of hole - 119.4m			

UNION MINIERE EXPLORATIONS AND MINING CORPORATION LIMITED
DRILL RECORD.

AREA REM

Hole No. T 17.

Depth: 117.3m

Drilled By: UMEC

ANOMALY:

Bearing and Dip: -90°

Started: July 5/75

Machine: Longyear-24

Described By:
A. Pauwels

CLAIM: REM 36

Local Coord. X=12,8N Y=2,1W Z=

Completed: Aug. 1/75

Diam Drill: A

Depth m		%	Description & Lithology	Mineralization	Dip	No. of Sample
From	To	Core				
0	12		Overburden.			
12	15		Foliated fine grained (diorite?), feldspar, sericite and biotite. Disseminated chalcopyrite and pyrite along foliae.	chalcopyrite		
15	18.9		Fine-to-medium grained faintly foliated syenite, trace of pyrite.			
18.9	21.6		Medium-grained equigranular diorite, feldspar, biotite, pyroxene, chlorite and epidote.			
21.6	21.9		Pink feldspar vein with graphite on fracture.			
21.9	22.5		As 18.9 - 21.6.			
22.5	28.8		As 18.9 - 21.6, a few small sections are fine grained and foliated.			
28.8	29.1		Monzonite, medium grained K-spar, sericite and biotite.			
29.1	41.7		Foliated fine grained grey syenite, rare specs of chalcopyrite, pyrite, and hematite, foliation at 45° to core axis. This is cut by numerous small dykes of coarse pink feldspar veins with sericite.	chalcopyrite		
41.7	43.5		Medium granodiorite dyke contains fragments of former rock, traces of pyrite.			
43.5	49.2		Monzonite as 28.8-29.1, quartz vein at 85° to core axis with traces of galena.	galena		
49.2	66		Monzodiorite, grey medium-to-coarse grained, K-spar, biotite, pyroxene, lineation (biotite) at 45° to core axis. A few quartz crystals at -60m.			
66	90		Former rock grades into pink monzonite with K-feldspar, pyroxene, epidote, and biotite. Low angle ($+85^{\circ}$) fracture at 75m coated with graphite and pyrite. A few traces of chalcopyrite at 82.2. Fault breccia from 82.2 to 85.2, with quartz veins and minor pyrite.			

UNION MINIERE EXPLORATIONS AND MINING CORPORATION LIMITED
DRILL RECORD.

AREA REM

Hole No. T 19

Depth: 120 m

Drilled By: UMEC

ANOMALY:

Bearing and Dip: -45° SW, N52° E

Started: Sept. 3/75

Machine: Longyear-24

Described By:

CLAIM: REM 21

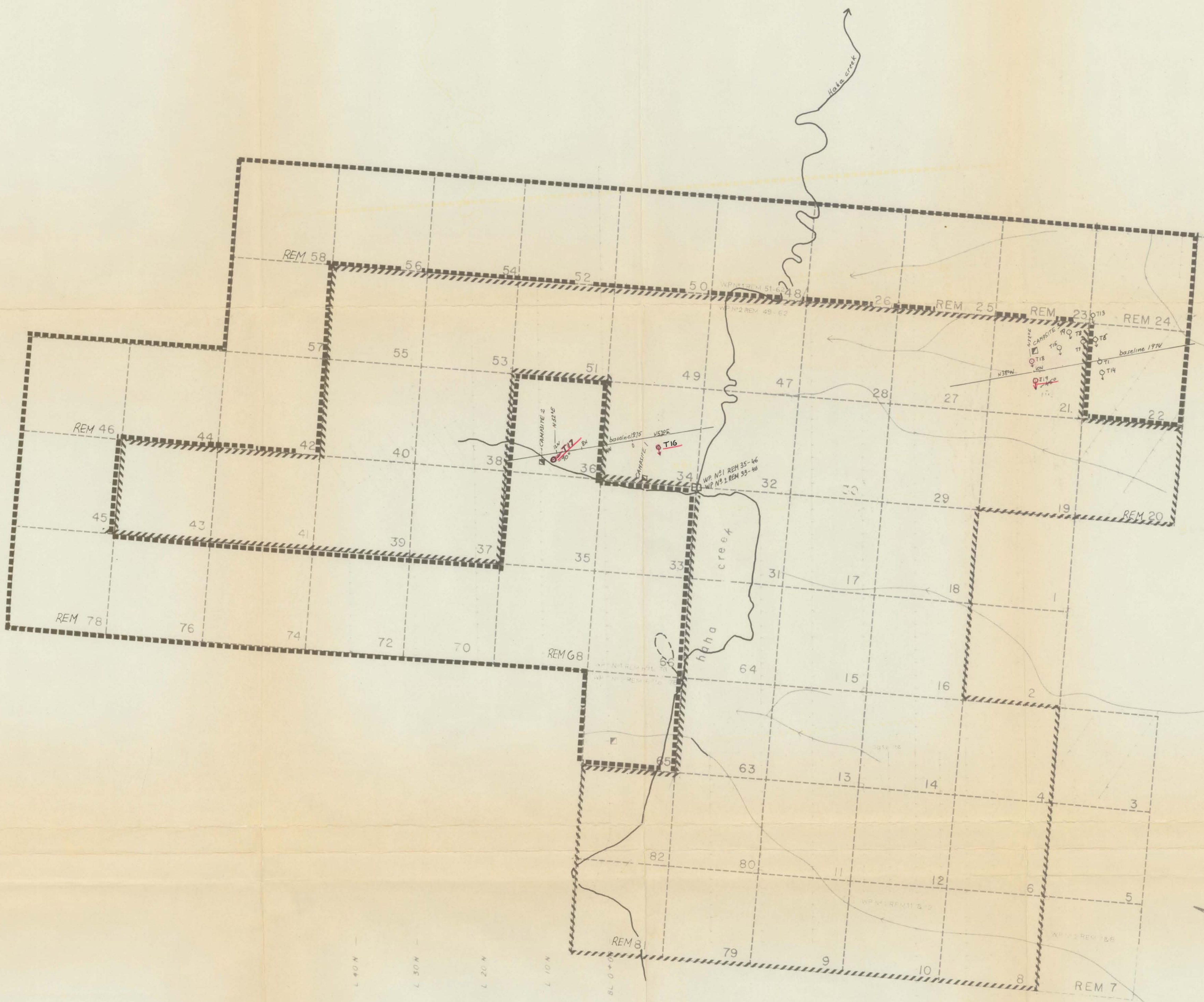
Local Coord. X= 2.2W Y= 10N Z=

Completed: Sept. 28/75

Diam Drill: AW

A. Pauwels

Depth m		%	Description & Lithology	Mineralization	Dip	No. of Sample.
From	To	Core				
0	15		Overburden.			
15	21.15		Very weathered rock, poor recovery (40-60%). Fine grained, foliated, K-feldspar, sericite, biotite, calcite, foliation at 30° to core axis (syenite?).			
21.15	27.75		As above but numerous dykes of coarse grained syenite (K-spar, sericite, minor hematite).			
27.75	77.1		Coarse grained syenite, K-spar, sericite in pods with a few traces of hematite, minor biotite. A few 1 to 4 cm wide quartz veins at 75. This rock cuts former at angle of 60° to core axis.			
77.1	80.1		Grey to greenish feldspar hornblende porphyry grey groundmass contains 1/2 cm wide white feldspar porphyroblasts and smaller hornblende crystals, finely disseminated pyrite. This rock type cuts former at 45° to core axis.			
80.1	81.6		Coarse syenite as above.			
81.6	82.6		Grey porphyry as above, a few pink feldspar porphyroblasts.			
82.6	84		Syenite as above, quartz veins.			
84	86.7		Grey porphyry as above, abundant pyrite in last 0.6 m.			
86.7	99.9		Coarse grained syenite, disseminated hematite in sericite pods.			
99.9	100.5		Abundant chlorite and amphiboles with K-feldspar.			
100.5	100.65		Dyke, granodiorite, fine grained, feldspar, quartz, minor biotite.			
100.65	120		Coarse syenite as before. Concentration of mafic minerals (chlorite, biotite, minor epidote) at 101.5-102.3, 104.5-104.8. Fractures along core axis at 104.7. A few quartz veins.			
			End of hole - 120 m.			



Department of
Mines and Petroleum Resources
ASSESSMENT REPORT
NO. 5751 MAP. 2

5751
M-2

Figure 2

REM CLAIMS
(HAHA GROUP I & II)
DIAMOND DRILL HOLE
LOCATION

- CLAIM GROUP BOUNDARY
- HAHA GROUP I
 - HAHA GROUP II
 - T16, T17, T19
Holes applied for assessment
 - Creek or stream
 - Claimpost
 - Claim boundary
 - Gridlines 1973
 - Campsite
 - Witnesspost
 - Drill hole collar and direction

94C/3,4,93N/14,13

Scale: 1" = 800' / 1/4600

UMEX CORPORATION LTD.

A. G. Burgoyne
A. H. Pauwels

DRAWN BY: A. Pauwels
DATE: 12-75
SURVEYED BY: AP

DWG No. 75-

To Accompany Assessment Report on Diamond Drilling Haha group I and Haha group II by AH Pauwels and AA Burgoyne P. Eng. 1975-1975