

5753

DIAMOND DRILLING REPORT

on the

S.J. 15 MINERAL CLAIM

JERSEY PIT AREA - HIGHLAND VALLEY, B.C.

KAMLOOPS MINING DIVISION

Latitude 50° 29'N Longitude 120° 58'W

N.T.S. Sheet No. 92 I/7W

BETHLEHEM COPPER CORPORATION
Suite 2100 - Guinness Tower
1055 West Hastings Street
Vancouver, B.C.
V6E 2H8

DECEMBER 11, 1975

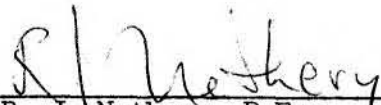
R. J. Nethery, P.Eng.

Department of
Mines and Petroleum Resources
ASSESSMENT REPORT

NO. 5753 MAP.....

These expenditures are detailed in Section B which also includes copies of the contractor's invoices.

Respectfully submitted,



R. J. Nethery, P.Eng.

INVOICE

SHEPHERD ENTERPRISES LTD.

804 - 470 Granville Street, Vancouver, B.C. V6C 1V5
 Box 21 - 24, Station A, Kamloops, B.C. V2B 7K6

MAY - 9 1975 REA

938-107
 310-001
 110-002

14-21-20

13002-74
13002-66

Bethlehem Copper Corporation Ltd.,
Suite 2100 - 1055 West Hastings St.,
VANCOUVER, B. C.
 Period April 16 - 30, 1975
 Property Highland Valley

Invoice No. **0004**

Date April 30, 1975

FOOTAGE

<u>Hole #</u>	<u>From</u>	<u>To</u>	<u>Total Footage</u>	<u>Price/Ft</u>	<u>Total</u>
B436	0	500	500 feet	10.50	5,250.00
B436	501	762	261 feet	11.50	3,001.50
B437	0	500	500 feet	10.50	5,250.00
B437	501	576	75 feet	11.50	862.50

Total Drilling Cost 14,364.00

MUD COST:

34 bags @ 6.10 per bag.

Total Mud Cost 207.40

MATERIALS:

Delate {

2 NW Casing Shoes @ 162.50
 1 HW Casing Shoe @ 264.00
 2 3-7/8 Tricones @ 79.50

- 325.00
 - 264.00
 - 159.00

Total Materials Cost 748.00

DIP TESTS:

2 Acid Tests @ 28.00 ea

Total Dip Tests 56.00

TOTAL INVOICE

\$ 15,375.40

Per: *E. Tessmer*
 E. Tessmer, Gen. Manager

ok for payment → \$14,627.40
 109-938
 P.A.

Engineering Approval: *[Signature]*

Date: *[Signature]*

INVOICE

MAY 23 1975 *LEX*

SHEPHERD ENTERPRISES LTD.

804 - 470 Granville Street, Vancouver, B.C. V6C 1V5
 Box 21 - 24, Station A, Kamloops, B.C. V2B 7K6

Bethlehem Copper Corporation Ltd.,
Suite 2100 - 1055 W. Hastings Street,
VANCOUVER, B. C.

Invoice No. **0005**

Date May 21, 1975

Period May 1 - 15, 1975

Property Highland Valley

FOOTAGE:

Hole #	From	To	Total Footage	Price/Ft.	Total
B437	577	964	387	11.50	4,450.50
B435	503	541	38	11.50	437.00

Total Drilling Cost: 4,887.50

MOVE BACK ON HOLE 435:

May 5 - 24 man hours @ 9.75 per hr	234.00
Plus 10%	23.40

Total move-back time: 257.40

HIT DRIFT - EXTRA CHARGES:

May 6 - 12 man hours @ 9.75 per hr	117.00
- 6 machine hours @ 8.50 per hr	51.00
May 7 - 36 man hours @ 9.75 per hr	351.00
- 18 machine hours @ 8.50 per hr	153.00
May 8 - 20 man hours @ 9.75 per hr	195.00
- 10 machine hours @ 8.50 per hr	85.00
	952.00
Plus 10%	95.20

Total extra charges: 1,047.20

LOST MATERIALS:

1	BQWL Core Barrel Assy - complete	477.00
1	BQ Overshot - complete	223.00
1	BQWL Bit	320.16
1	BQWL Shell	199.09

Approval over page. [Signature]

.....2

Engineering Approval..... Date.....

INVOICE

SHEPHERD ENTERPRISES LTD.

804 - 470 Granville Street, Vancouver, B.C. V6C 1V5
Box 21 - 24, Station A, Kamloops, B.C. V2B 7K6

Bethlehem Copper Corporation Ltd.

Cont'd - from 0005
Invoice No. 0006

Date

Period

Property Highland Valley

LOST MATERIALS: cont'd

1 BW Casing Shoe

131.60

Total Lost Materials: 1,350.85

MUD:

10 bags @ 6.10 each

Total Mud: 61.00

DIP TESTS:

Acid Dip Test in Hole 437

Total Dip Tests: 28.00

TOTAL INVOICE: \$ 7,631.95

Per: [Signature]
E. Tessmer, General Manager

*OK for Payment.
107-938
PRT
fb*

Engineering Approval Date

SECTION "B"

SECTION B - STATEMENT OF EXPENDITURES

Shepherd Enterprises Ltd. - diamond drilling contractor

April 25 to May 5, 1975
DRILL HOLE No. B-75-437

FOOTAGE

0-500' (500' @ \$10.50/foot)	=	\$ 5,250.00
500'-964' (464' @ \$11.50/foot)	=	\$ 5,336.00
		<hr/>
		\$10,586.00

MUD

23 bags @ \$6.10 per bag	=	\$140.30
--------------------------	---	----------

DIP TESTS

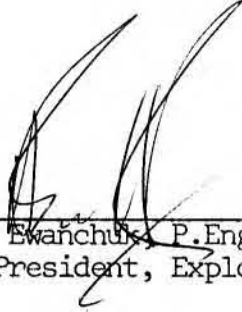
2 @ \$28.00	=	\$56.00
-------------	---	---------

TOTAL		\$10,782.30
-------	--	-------------

SECTION C - STATEMENT OF EMPLOYEE QUALIFICATIONS

DAVID CHARLES MILLER, P.ENG. -

Mr. D. C. Miller, geologist, obtained a degree in Geological Engineering from the University of British Columbia in 1959. Following graduation he was employed by Eldorado Mining and Refining Ltd. and Cominco Ltd. before joining the exploration staff of Bethlehem Copper Corporation in the fall of 1967. His positions with Bethlehem have been as Chief Geologist at the company's Highland Valley operations and Maggie exploration project (1967-73), Senior Exploration Geologist on numerous property examinations and exploration ventures in Canada and the United States (1973 to Sept. 1975). Mr. Miller is presently engaged in a private consulting practice based in Kamloops, B.C.



H. G. Ewanichuk, P.Eng.
Vice President, Exploration

SECTION 'D'

SECTION D - DRILL HOLE LOGS

Diamond Drill Hole No. B-75-437

DRILL HOLE LOG

BETHLEHEM COPPER CORPORATION LTD.

SHEET No. 7

Property BETHLEHEM Hole No. B-75-437 Logged by D. C. Miller Date May 7, 1975

DESCRIPTION	SULPHIDES			ALTERATION				STRUCTURE		OTHERS		From	To	Sample No.	%Cu	%Mo			% Recover.
	Py	Cp	Chl	Ser.	Chl.	Ep	K-spar	Faults	Fractures	Qtz Veining	Aplitic Veins								
(740-800) BRECCIA																			
Medium grey; mainly subrounded fragments of Guichon Quartz Diorite to 3" size; matrix fine to medium-grained Bethlehem Porphyry; relatively minor matrix; well mineralized with disseminated fine-grained chalcopyrite rimmed with bornite; some veins to 2" of fine to medium-grained greenish porphyry at 40°-60°; contact at 740' gradational; contact at 800' with increasing fragments of Bethlehem Quartz Diorite.		1:4		M	S	W			Mod.	Weak	Minor calcite	770	780	4701V					95
		1:3		W	S	W			"	"	"	780	790	4702V					95
		1:1		W	S	W			"	"	"	790	800	4703V					95
		1:1		W	S	W			"	"	"	800	810	4704V					95
		2:1		W	S	W			"	"	"	810	820	4705V					95
(800-806) BETHLEHEM PORPHYRY-BETHLEHEM QUARTZ DIORITE		2:1		W	S	W			"	Mod.	"	820	830	4706V					95
Pale grey, medium-grained; porphyritic texture; pinkish cast; some pink zeolite; very sparse mineralization.		1:1		W	S	W			"	"	"	830	840	4707V					95
		1:1		W	S	W			"	Weak	"	840	850	4708V					95
(806-930) BRECCIA																			
Similar to above but now more fragments of Bethlehem Quartz Diorite; fractures tight, chlorite healed, mainly at 30°-60° to core axis.		1:2		W	S	W			851-852 70°	"	"	850	860	4709V					90
		1:2		W	S	W			Weak	Mod.	"	860	870	4710V					95
		1:2		W	S	W			"	"	"	870	880	4711V					95
		2:1		S	S	M			885-896 70°	Strong	Weak to mod.	880	890	4712V					95
		4:1		W	S	W			Mod.	"	"	890	900	4713V					80

DRILL HOLE LOG

BETHLEHEM COPPER CORPORATION LTD.

SHEET No. 6

Property BETHLEHEM

Hole No. B-75-437

Logged by D. C. Miller

Date May 7, 1975

DESCRIPTION	SULPHIDES				ALTERATION				STRUCTURE		OTHERS		From	To	Sample No.	%Cu	%Mo			% Recover.
	Py	Cp	Un. Cp	% Py	Ser.	Chl.	Ep.	Kspar	Faults	Fractures	Oiz. Veining	Aplitic Veins								
(643) Contact at 70° to core axis.																				
					W	M	W				Weak		640	650	4688V					90
					W	M	W				"		650	660	4689V					90
(660-680) BETHLEHEM PORPHYRY											Weak, some calc.	Weak	660	670	4690V					100
Medium to light grey; comprises euhedral zoned plagioclase phenocrysts to 3 mm in a fine-grained matrix; less than 10% mafics altered to chlorite, epidote and sericite; several fine fractures at 30°-70° to core axis healed by inner chlorite and outer whitish to orangey fine-grained feldspar.			1:2		W	S	S		674-676	Mod.	"	"	670	680	4691V					80
			1:2		W	S	S			"	"	"	680	690	4692V					95
			1:3		W	S	S			"	"	"	690	700	4693V					95
(667-675) Gradational with Guichon Quartz Diorite; more mafics (15%); minor fine-grained chalcopyrite and bornite; considerable (10%) magnetite.			2:1		W	S	S		705-706	Strong	"	"	700	710	4694V					95
			2:1		M	S	S			"	Some hematite	"	710	720	4695V					95
(680-740) GUICHON QUARTZ DIORITE										"	"	"	720	730	4696V					95
Medium to dark grey-green; 20% chloritized mafics; numerous fine chlorite-healed fractures at 30°-60°; very sparse chalcopyrite and bornite.			1:1		M	S	S			"	Mod. calcite	Weak calcite	730	740	4697V					95
(700-740) Fair bornite and chalcopyrite in fine fractures and disseminations and quartz veins.			2:1		M	S	M			Mod.	"	"	740	750	4698V					95
(711-733) Broken core; quartz-bornite vein, 2" at 50° to core axis at 737'.			1:5		M	S	W			Weak	Weak	"	750	760	4699V					95
			1:5		M	S	W			"	"	"	760	770	4700V					95

DRILL HOLE LOG

BETHLEHEM COPPER CORPORATION LTD.

SHEET No. 5

Property BETHLEHEM Hole No. B-75-437 Logged by D. C. Miller Date May 7, 1975

DESCRIPTION	SULPHIDES			ALTERATION				STRUCTURE		OTHERS		From	To	Sample No.	%Cu	%Mo			% Recovery
	Py	Cp	Un: Cp	% Py	Ser.	Chl.	Ep	K-spar	Faults	Fractures	Qtz. Veining								
quartz; very sparse fine-grained mineralization associated with mafics.			1:1		W	M	W			Weak			510	520	4675V				95
(527-554) BETHLEHEM PORPHYRY			1:1		W	M	W		527-530	"			520	530	4676V				90
Medium grey; 60% medium-grained subhedral phenocrysts in a fine-grained aphanitic greenish matrix; some blebs of epidote; quartz inconspicuous; strong chlorite alteration destroys texture; fine-grained disseminated bornite and chalcopyrite; includes some Guichon Quartz Diorite.			3:1		M	S	M			Strong			530	540	4677V				90
			3:1		M	S	M			"			540	550	4678V				90
			3:1		M	S	M			Mod.			550	560	4679V				95
(554-660) GUICHON QUARTZ DIORITE			-		W	W	W			Weak			560	570	4680V				95
Medium-grey; medium-grained; some pink feldspar, less than 10%; some weak bornite and chalcopyrite with mafics and rare veinlets.			-		W	W	W			"			570	580	4681V				95
(570-575) (625-631) Bethlehem Quartz Diorite			3:1		M	S	W			"	Weak		580	590	4682V				95
(614-623) (635-643) Bethlehem Porphyry			1:1		W	W	W			"			590	600	4683V				95
			1:1		W	S	W		602-603	Mod.			600	610	4684V				90
			1:1		W	M	W			"			610	620	4685V				95
			1:1		W	M	W			"			620	630	4686V				95
			1:1		W	M	W			"			630	640	4687V				95

DRILL HOLE LOG

BETHLEHEM COPPER CORPORATION LTD.

SHEET No. 4

Property BETHLEHEM.

Hole No. B-75-437

Logged by D. C. Miller

Date May 7, 1975

DESCRIPTION	SULPHIDES			ALTERATION				STRUCTURE		OTHERS		From	To	Sample No.	%Cu	%Mo			% Recovery
	Py	Cp	Bn: Cp	% Py	Ser.	Chl.	Ep	K-spar	Faults	Fractures	Qtz Veining								
(350-357) BETHLEHEM QUARTZ DIORITE																			
Pale grey; medium-grained; broken core and gouge at 350-353' with strong sericite and chlorite.			3:1		W	M	W			Weak			380	390	4662V				95
			1:1		W	M	W			"			390	400	4663V				95
(357-428) GUICHON QUARTZ DIORITE																			
Medium grey; medium-grained; 20% even sized anhedral mafics; moderately altered to chlorite; minor epidote; fine-grained bornite and chalcopryrite associated with mafics and along very fine discontinuous veinlets.			1:1		W	M	W			"			400	410	4664V				95
			2:1		W	M	W			Mod.			410	420	4665V				95
			4:1		M	S	W			"			420	430	4666V				95
(360-361) (373-376) (406-407) Bethlehem Quartz Diorite.			4:1		M	S	W			"			430	440	4667V				90
(428-439) BETHLEHEM PORPHYRY																			
Dark grey; fine to medium-grained; comprises 50% subhedral medium-grained feldspar in a fine-grained granular matrix; strong chlorite-sericite alteration.					W	W	M			Weak			440	450	4668V				95
					W	W	M			"			450	460	4669V				95
(439-487) CROWDED BETHLEHEM PORPHYRY			2:1		W	W	M			"			460	470	4670V				95
Pinkish grey; comprises 75% medium-grained pinkish feldspar with variable sized and variably epidote-altered mafics; some fine-grained bornite and chalcopryrite; occasional rounded quartz eye.			1:1		W	W	M			"			470	480	4671V				95
			1:1		W	M	W			"			480	490	4672V				95
(487-527) GUICHON QUARTZ DIORITE			2:1		W	M	W			"			490	500	4673V				95
Medium light grey; medium-grained; 15% anhedral mafics; 10% angular to subrounded			2:1		W	M	W			"			500	510	4674V				95

DRILL HOLE LOG

BETHLEHEM COPPER CORPORATION LTD.

SHEET No. 3

Property BETHLEHEM

Hole No. B-75-437

Logged by D. C. Miller

Date May 5, 1975

DESCRIPTION	SULPHIDES				ALTERATION				STRUCTURE		OTHERS		From	To	Sample No.	%Cu	%Mo			% Recovery
	Py	Cp	Bn: Cp	% Py	Ser.	Chl.	Ep	K-spar	Faults	Fractures	Qtz. Veining	Aplitic Veins								
Bethlehem porphyry continued; pinkish medium-grained variety; prominent epidote; quartz poor; sparse fine-grained bornite associated with epidotized mafics; very sparse chalcopyrite; weak fractures at 15°-50° to core axis.	>5:1				W-M	M	M			Weak	Some pink zeolites;		250	260	4649V					95
	>5:1				W-M	M	M			"	rare qtz veining		260	270	4650V					95
	>5:1				W-M	M	M			"			270	280	4651V					90
	>5:1				W-M	M	M			"			280	290	4652V					95
	>5:1				W-M	M	M			"			290	300	4653V					95
	>5:1				W-M	M	M		297-300	"			300	310	4654V					95
(310-320) Strong chlorite-sericite alteration.	>5:1				S	S	M			"			310	320	4655V					95
	>5:1				M	M	S			"			320	330	4656V					95
(330-331) Chilled contact.	>5:1				W	W	M			Mod.			330	340	4657V					90
(331-340) BETHLEHEM QUARTZ DIORITE Pale grey; medium-grained; non-porphyritic; contact at 340' chloritized and gradational.	>5:1				W	S	M			"			340	350	4658V					95
(340-350) BETHLEHEM PORPHYRY Medium to dark grey; comprises 60% subhedral pinkish medium-grained feldspar in a greenish grey glassy matrix; fine-grained disseminated bornite.	2:1				M	M	W		350-353	"			350	360	4659V					95
	3:1				W	M	W			Weak			360	370	4660V					95
	1:1				W	M	W			"			370	380	4661V					95

DRILL HOLE LOG

BETHLEHEM COPPER CORPORATION LTD.

SHEET No. 2

Property BETHLEHEM Hole No. B-75-437 Logged by D. C. Miller Date May 5, 1975

DESCRIPTION	SULPHIDES			ALTERATION				STRUCTURE		OTHERS		From	To	Sample No.	%Cu	%Mo			%S Recovered
	Py	Cp	Bn: Cp	% Py	Ser.	Chl.	Ep	if-spar	Faults	Fractures	Qtz. Veining								
Some fine-grained disseminated bornite and minor chalcopyrite.			3:1		M	S-M	W-M			Weak	Weak		120	130	4636V				95
			3:1		M	S-M	W-M	136-137	Mod.		"		130	140	4637V				95
			3:1		M	S-M	W-M			Strong	"		140	150	4638V				95
			3:1		M	S	W-M	154-155		"	"		150	160	4639V				90
(162-216) BETHLEHEM PORPHYRY																			
Light grey; fine to medium-grained; very similar to preceding but has more uneven distribution of mafics with occasional large phenocryst; approximately 10% more rounded quartz; weak disseminated bornite and very sparse chalcopyrite.			2:1		W	S	W-M			Weak	"		160	170	4640V				95
			2:1		W	M	W-M			"	"		170	180	4641V				95
			2:1		W	M	W-M			"	"		180	190	4642V				95
			2:1		S	M	W-M	197-201	Strong		"		190	200	4643V				95
			2:1		M	S	W-M			Mod.	"		200	210	4644V				95
(216-331) BETHLEHEM PORPHYRY																			
Pink grey; epidotized mafics and some feldspar; fine-grained bornite with mafics; quartz not conspicuous; local veinlets of bornite at 15° to core axis at 230-252'.			2:1		M	S	W-M			"	"		210	220	4645V				95
			5:1		M	M	M			Weak	"		220	230	4646V				95
			5:1		W	M	M	237 - at 10°		Mod.	"		230	240	4647V				95
			5:1		W	M	M			"	"		240	250	4648V				95

SECTION E - ILLUSTRATIONS

<u>Description</u>	<u>Drawing Number</u>
LOCATION PLAN - Scale 1:50,000	75-1
DRILL HOLE PLAN outlining mineral claims. Composite of Sheet Nos. L 12, L 13, M 12, M 13. - Scale 1:4,800	75-2
MINERAL CLAIM PLAN. Composite of Sheet Nos. K 14, K 15, L 14, L 15. - Scale 1:4,800	75-3
DRILL HOLE PLAN. Portion of Sheet No. M 12. - Scale 1:1,200	75-4

TABLE OF CONTENTS

SECTION A	-	SUMMARY OF WORK	
		Introduction	
		Location and Access	
		Topography and Physical Environment	
		Diamond Drilling	
		Summary of Costs	
SECTION B	-	STATEMENT OF EXPENDITURES	
SECTION C	-	STATEMENT OF EMPLOYEE QUALIFICATIONS	
		D. C. Miller, P.Eng.	
SECTION D	-	DRILL HOLE LOG	
SECTION E	-	ILLUSTRATIONS	
		# 1 LOCATION PLAN	
		# 2 Drawing 75-1	- LOCATION PLAN Scale 1:50,000
		3 Drawing 75-2	- DRILL HOLE PLAN Scale 1:4,800
		4 Drawing 75-3	- MINERAL CLAIM Scale 1:4,800
		5 Drawing 75-4	- DRILL HOLE PLAN Scale 1:1,200



Department of
 Mines and Petroleum Resources
 ASSESSMENT REPORT
 NO. 5753 MAP 1

PROPERTY

HIGHLAND VALLEY
 LOCATION PLAN

SECTION A - SUMMARY OF WORK

Introduction

During the period from March 24, 1975 to May 8, 1975, Bethlehem Copper Corporation carried out a program of diamond drilling in the south-east sector of its Jersey Pit. The purpose of the program was to test the area for extensions to the known ore zone and to provide additional grade control for a planned pit expansion. The program involved six (6) NQ size diamond drill holes and totalled 1140.9 metres (3743').

Location and Access

The Jersey Pit is one of the three areas being mined by Bethlehem at its Highland Valley operations. The development is located on the north side of the Highland Valley, 32 kilometres S40°E of Ashcroft and 48 kilometres S67°W of Kamloops. The geographic co-ordinates of the mine area are 50°29' Latitude and 120°58' Longitude. Access to the mine site is by paved highway from Ashcroft, a road distance of 46.5 kilometres.

Topography and Physical Environment

The Highland Valley area is characterized by generally moderate topography. The valley is a flat-bottomed topographic feature varying in width from .5 to 1 kilometre and trending NW-SE. The walls of the valley rise from a base elevation of 1205 metres A.S.L. (Quiltanton Lake) to 1675 metres on the southwest flank and 1900 metres on the northeastern side. The elevation at the Bethlehem plant site is 1480 metres A.S.L.

The valley floor is dotted with a number of small lakes and marshes and contains as its main drainage facility Witches Brook which flows to the east and empties into Guichon Creek.

Most of the area contains a forest cover of lodgepole pine and douglas fir along with small stands of spruce. The area is characterized by a general lack of undergrowth except in the areas near the lakes and marshes.

Diamond Drilling

Shepherd Enterprises Ltd. of Vancouver and Kamloops was the firm selected to carry out the drill program. They employed an E.J. Longyear Model 44 diamond drilling unit. This unit yielded NQ size drill core, the general recovery of which was excellent (see Drill Hole Log in Section D). One particular problem encountered during this drill program was the necessity of scheduling the work so as not to conflict with or impede the mining operations that were simultaneously being carried out in the Jersey Pit.

Drill hole No. B-75-437 commenced on April 25, 1975 at a site on the 4933 Bench in the Jersey Pit at grid co-ordinates 10900 N and 7100 E. The hole was drilled bearing due east at a dip of -45° and continued until May 5, 1975 when it was halted at 293.8 metres (964'). Final survey co-ordinates were 10902.18 N; 7105.52 E and 1503.6 metres (4932.99') elevation.

A detailed geological log was prepared by D. C. Miller, P.Eng., a copy of which is appended in Section D. Half of the split core has been retained at Bethlehem's core storage facilities at the Highland Valley operations.

Summary of Costs

Direct drilling costs for Hole B-75-437 totalled \$10,782.30 which works out to an average rate of \$36.70/metre or \$11.18/foot.



921/6E

921/7W

921/11E

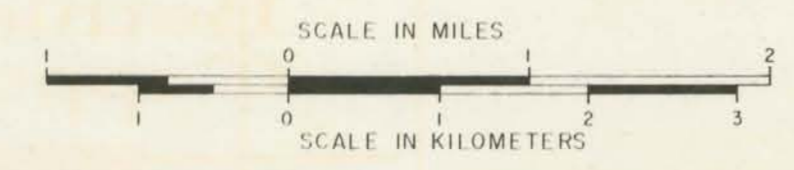
921/10W

Department of
Mines and Petroleum Resources
ASSESSMENT REPORT
5753 MAP 2

M-2

5753

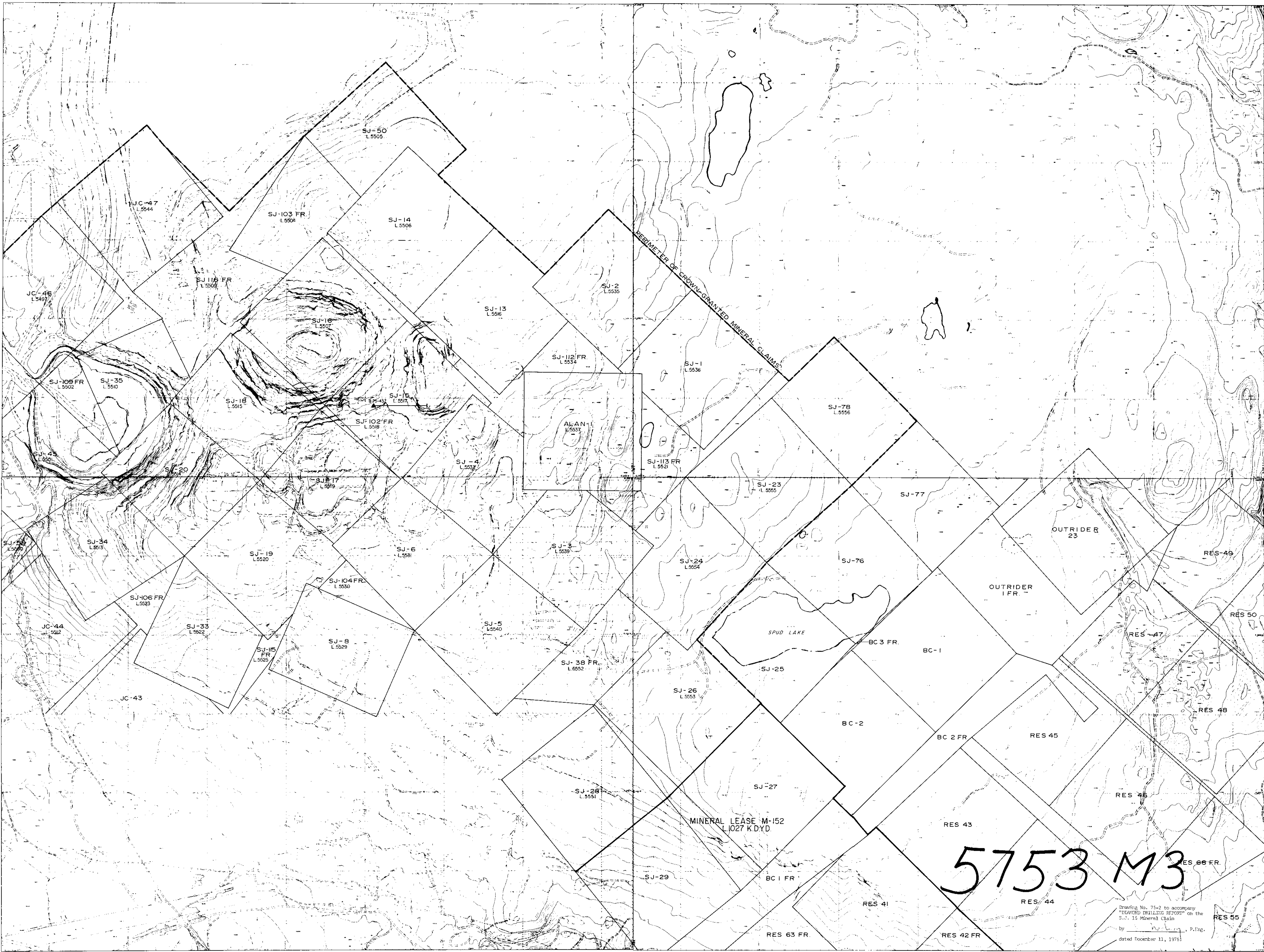
Drawing No. 75-1 to accompany
"DIAMOND DRILLING REPORT" on the
S.J. 15 Mineral Claim
by *R. M. Astley*, P.Eng.
dated December 11, 1975.



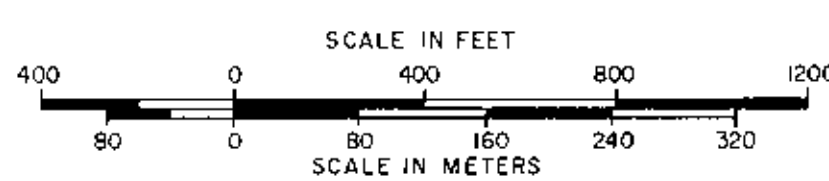
DATE REVISED	BY	DEPT. - EXPLORATION
MAY 22, 1973	ydb	DRAWN BY - Altair / m.k.
JUNE 14, 1973	ydb	CHECKED - E.A.
FEB. 19, 1975	m.k.	APPROVED -
		DATE - September / 72
		SCALE - 1:50,000



TITLE -	
HIGHLAND VALLEY LOCATION PLAN	
FILE NUMBER -	DRAWING NUMBER -
N.T.S. 921/6E, 7W 10W, 11E	75-1



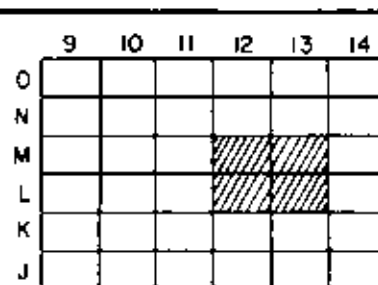
MAPPING BASED ON OR REVISED FROM JULY 1973 PHOTOGRAPHY



Department of
Mines and Petroleum Resources
ASSESSMENT REPORT

NO. 5753 MAP 3

SHEET INDEX



DATE REVISED BY

DRY - EXPLORATION
DRAWN BY - Altair/mk
CHECKED - E.A.
APPROVED -
DATE - MAR 1974
SCALE - 1" = 400' or 1:4800



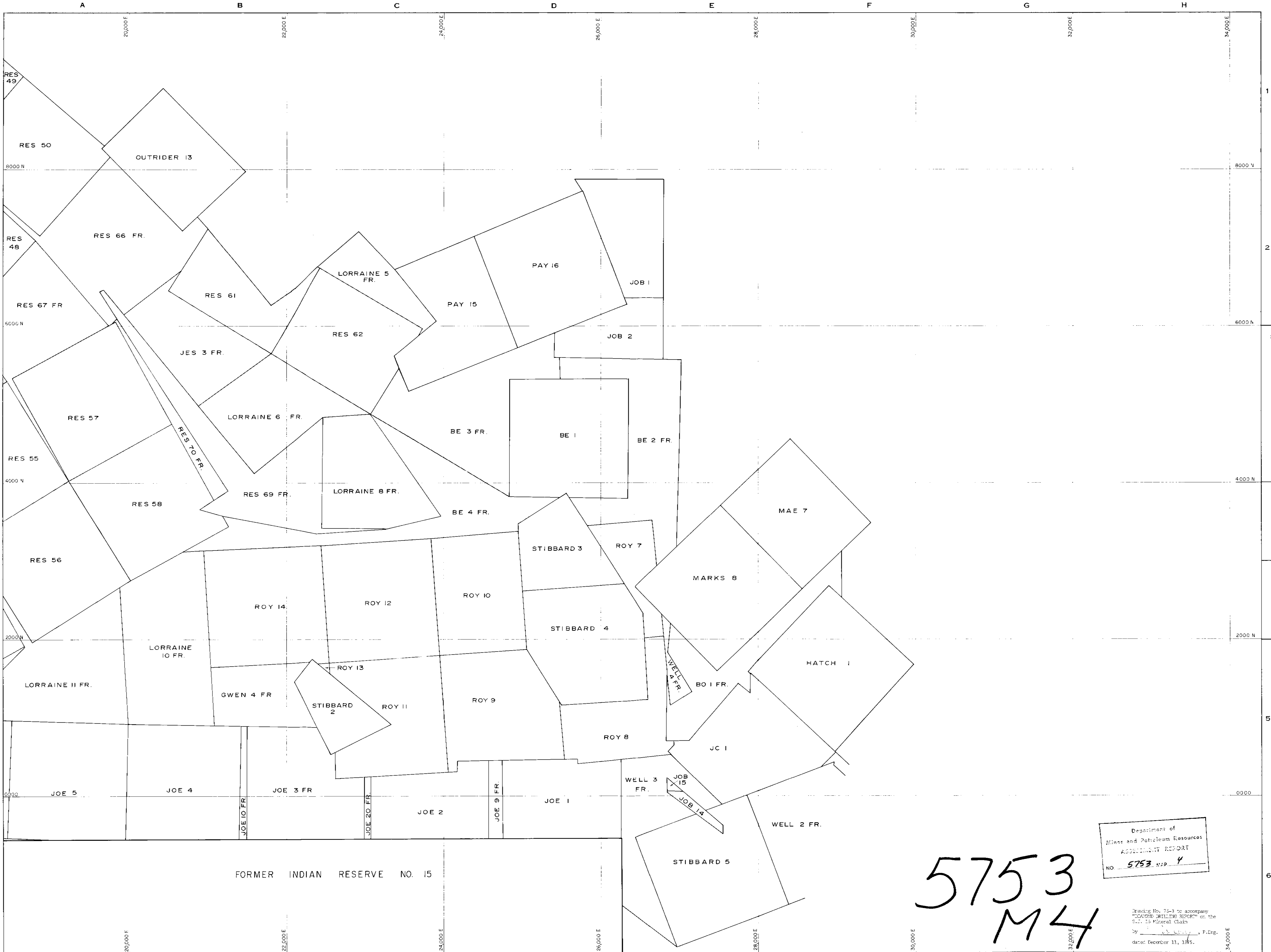
TITLE - HIGHLAND VALLEY
DRILL HOLE PLAN

FILE NUMBER - DRAWING NUMBER -

75-2

Drawing No. 75-2 to accompany
"DETAILED DRILLING REPORT" on the
S.J. 15 Mineral Claim
by _____ P.Eng.
dated December 11, 1973

5753 M3

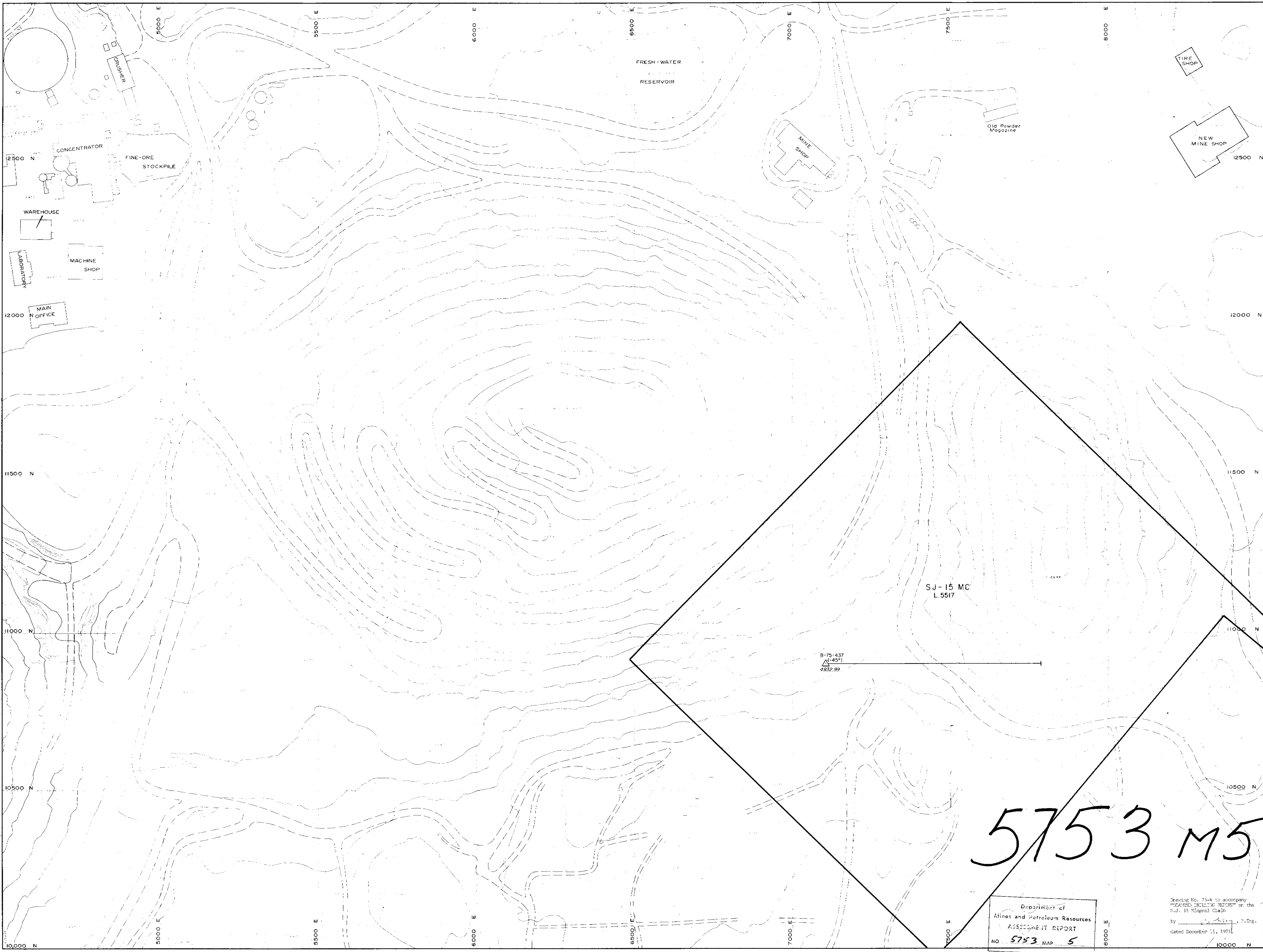


Department of
Mines and Petroleum Resources
ASSESSMENT REPORT
NO. 5753 MAP 4

5753
M4

Drawing No. 75-3 to accompany
"GROUND DRILLING REPORT" on the
S.T. 15 Mineral Claim
by _____, P.Eng.
dated December 11, 1975.

<p>SCALE</p> <p>FEET 400 0 400 800 1200</p> <p>METERS 0 100 200 300 400</p>		<p>SHEET INDEX -</p> <table border="1"> <tr><td>9</td><td>10</td><td>11</td><td>12</td><td>13</td><td>14</td><td>15</td></tr> <tr><td>0</td><td></td><td></td><td></td><td></td><td></td><td></td></tr> <tr><td>A</td><td></td><td></td><td></td><td></td><td></td><td></td></tr> <tr><td>M</td><td></td><td></td><td></td><td></td><td></td><td></td></tr> <tr><td>L</td><td></td><td></td><td></td><td></td><td></td><td></td></tr> <tr><td>K</td><td></td><td></td><td></td><td></td><td></td><td></td></tr> <tr><td>J</td><td></td><td></td><td></td><td></td><td></td><td></td></tr> </table>	9	10	11	12	13	14	15	0							A							M							L							K							J							<p>DATE REVISED _____ BY _____</p> <p>DEPT. - EXPLORATION</p> <p>DRAWN BY - A. J. / m.k.</p> <p>CHECKED - E. A.</p> <p>APPROVED - _____</p> <p>DATE - OCT / 1974</p> <p>SCALE - 1" = 400' @ 1:4830</p>	<p>Bethlehem Copper</p> <p>INCORPORATED IN CANADA</p>	<p>TITLE - HIGHLAND VALLEY MINERAL CLAIMS</p> <p>FILE NUMBER - _____ DRAWING NUMBER - 75-3</p>
9	10	11	12	13	14	15																																																
0																																																						
A																																																						
M																																																						
L																																																						
K																																																						
J																																																						



5753 M5

Department of
 Mines and Petroleum Resources
 ASSESSMENT REPORT
 NO. 5753 MAP 5

Drawing No. 75-4 to accompany
 "MINERAL DRILLING REPORT" of the
 S.J. 15 Mineral Claim
 by _____ P.Eng.
 dated December 11, 1975