

# 5766

GERHARD N ROSEN  
Box 48296  
Bental 3  
Vancouver V7X 1A1

NEW PYRAMID GOLD MINES INC  
300-890 West Pender Street  
Vancouver

Dear Sirs

DIAMOND DRILL CORE LOGS

Dec 9, 1975

AU Mineral claims  
Pothole Lake  
Aspen Grove  
Merritt, B.C.  
Nicola Mining Division

Attached please find a memorandum report on the geologic core logs of two diamond drill holes your company cored at the Aspen Grove property.  
Following are some details:

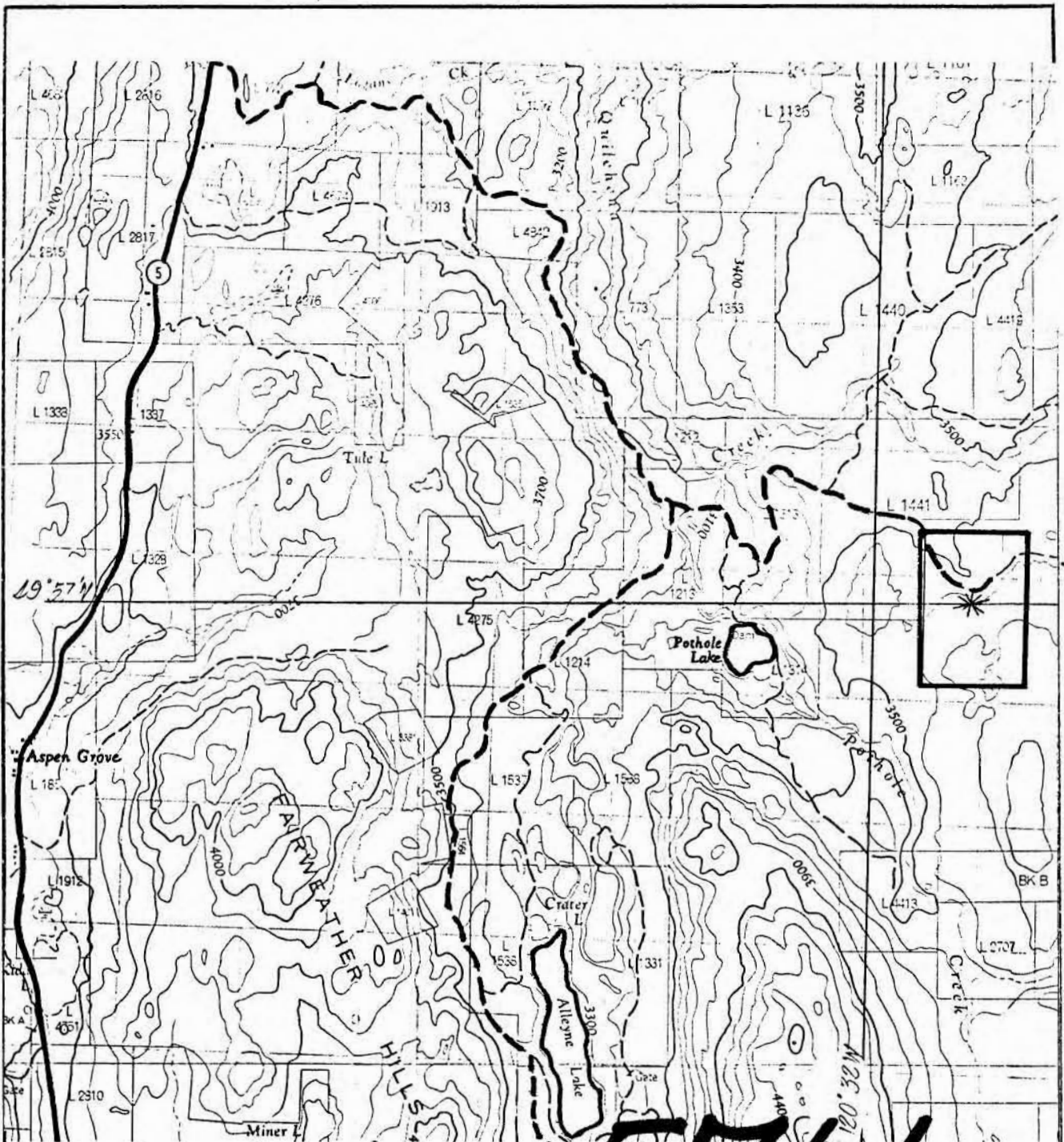
DATE OF DRILLING	75-2	May 13 to May 16, 1975
	75-7	May 24 to May 31, 1975

CORE STORAGE            AspenGrove Store

CLAIMS	AU 3	Record Number 43364	Nov 11, 1975
	AU 4	Record Number 43365	Nov 11, 1975
	AU 7	Record Number 43368	Nov 11, 1975

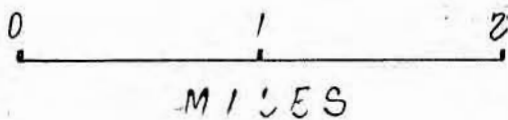
I trust this information is sufficient to allow you to apply for assessment credits. Should you desire to cover more years





**M-1**

**5766**

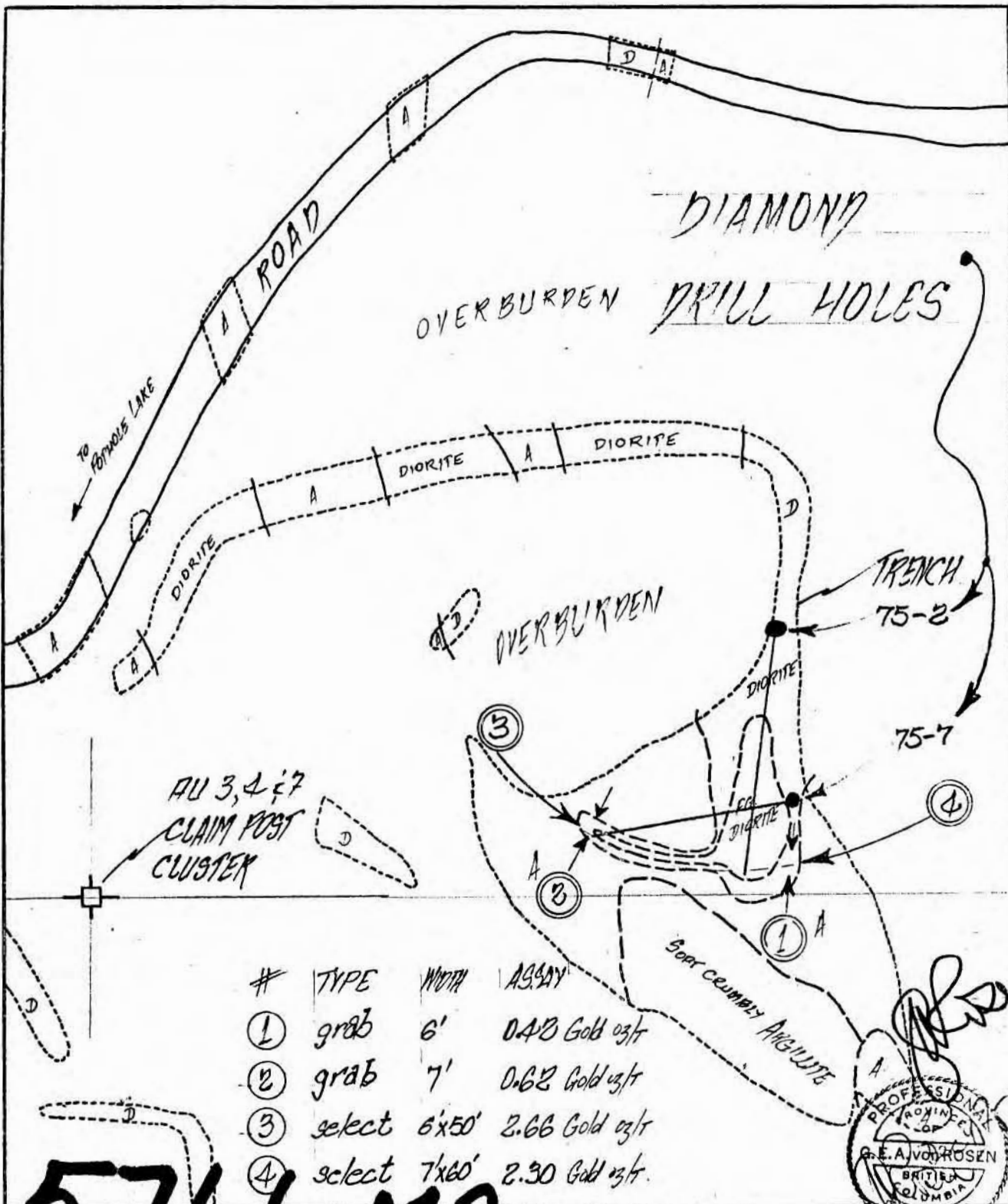


NEW PYRAMID GOLD MINES INC.

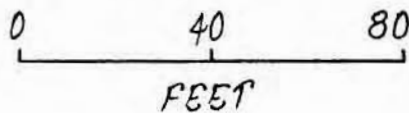
LOCATION MAP

AU CLAIMS GOLD DEPOSIT  
ASPEN GROVE, B.C.

L.J. MANNING AND ASSOCIATES LTD



**5766 M2**



NEW PYRAMID GOLD MINES LTD.

GEOLOGY & ASSAY PLAN  
SHOWING DDH 75-2 AND DDH 75-7  
AU CLAIMS GOLD DEPOSIT  
ASPEN GROVE, B.C.

INFORMATION SUPPLIED BY BRIAN F. WILSON, PROSPECTOR

LJ MANNING & ASSOCIATES LTD. 08/86

NEW PYRAMID GOLD MINES INC.DIAMOND DRILL CORE LOGLocation: Au Group, Pothole Lake, Aspen Grove, 92HE, 49° 67'N; 120° 33'W.Collar: See map.Azimuth: 165° True @ 23° E declination.Dip: -44°Depth: 87'LOG

0 - 40'	Fine grained grey tuffs (?)
40 - 51	Coarser grained grey tuffs (?)
51 - 77	Coarse grained grey tuffs with fragments (?)
77 - 84	Finer grained grey tuff
84 - 87	Coarse grained grey tuff with fragments (?)

E.O.H.

Note: (?) refers to "TUFF" designation; could be argillite.



NEW PYRAMID GOLD MINES INC.DIAMOND DRILL CORE LOG

Location: Au Group, Pothole Lake, Aspen Grove, 92HE, 49° 67' N; 120° 33' W.

Collar Coordinates: See map.

Azimuth: 276½° (23° E Mag. Declination).

Dip: -35°

Depth: 201'

LOG

0 - 9' Ledge  
 0 - 16 Fine grained tuff  
 16 - 30 Fine grained grey porphyry  
 30 - 45 Fine grained blue clay (?)  
 45 - 98 Coarser tuff (?)  
 98 - 106 6" black slate, then coarser bleached - altered sediment  
 106 - 118 12" rubble, gougy, bleached  
           3" black shale  
           5' bleached blue clay  
 118 - 147 Intrusive, lighter colored diorite  
 147 - 156 Bluish, bleached clay (?)  
 156 - 160 Low angle contact, intrusive (diorite)  
 160 - 178 Coarser tuff (?)  
 178 - 188 Low angle contact, white veining  
           black, low angle bedding, shale (?)  
 188 - 191 Bleached, gougy contact  
           bleached, coarser grained tuff (?)  
 191 - 201 Light colored intrusive (diorite ?) with white veins and  
           dark inclusions (black shale?), some disseminated  
           chalcopyrite.

E.O.H.

1975  
  
 Dec 1975  
*[Handwritten signatures]*

CERTIFICATE OF QUALIFICATIONS

I Gerhard E. A. von Rosen, hereby certify:

THAT I am residing at 1170 Queens Avenue, West Vancouver, B.C.

THAT I am a geological engineer registered in British Columbia.

THAT I graduated from the University of British Columbia with a Bachelor of Science degree in 1962, and a Master of Science degree in 1966, both in geology.

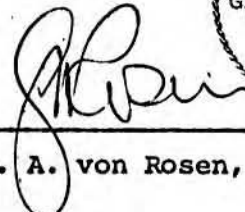
THAT my mining, exploration, and consulting activities has included work in Alberta, British Columbia, Yukon, N.W.T., Nevada, California, and Chile, on precious and base metal lode and open pit situations since my graduation.


THAT this report is based on information supplied by B. Fenwick Wilson and Carl Zuber, prospectors, and on published information on the area.

THAT I do not hold or control any interest in New Pyramid Gold Mines Inc., its shares or properties, nor do I expect to do so in the future.

Dated at Vancouver, British Columbia this 9th



  
G. E. A. von Rosen, P. Eng.

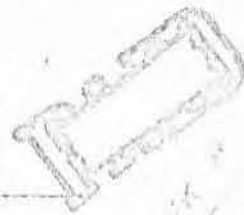


Drilling Costs (Invoices attached)

1. Pedersen Drilling	\$ 4,170
2. Ballinderry Exploration	2,250
3. J.K. Smit & Sons	1,179
4. J.K. Smit & Sons	344
5. Canadian Longyear	165
6. Broadway Bulldozing	<u>417</u>
	<u>\$ 8,525</u>



PYRAMID MINES LTD.



*Handwritten notes:*  
 2/11/75  
 1047  
 10-3-75

IN ACCOUNT WITH.

PEDERSON DRILLING

BOX 1124 PRINCETON B.C.

PH. 295\* 7729

Building set ups and repairing road to drill site 2 men at \$50.00 per day per man.	\$100.00
Moving drill, drill equipment and tractor from Princeton and Merritt to drill site, 2 men at \$50.00 per day per man.	\$100.00 ✓
Truck rental for moving equipment, \$15.00 per hour 12 hours	\$180.00
Gas, oil, grease (invoice # 29557, 29749, 228682.	\$124.00
Gas, oil (invoice 29673	\$ 64.53
Gas, diesel fuel (001169	\$ 85.00
Spark plugs for pump motors (2635532	\$ 2.40

DRILLING

Hole # 1 0 to 74 feet at \$5.00 per foot. Moving from hole # 1 to hole # 2, 2 men at \$8.00 per hour per man. (4 hours)	\$370.00 \$ 32.00
Hole # 2 from 0 to 88 feet at \$5.00 per foot. Moving from hole # 2 to hole # 3, 2 men at \$8.00 per hour per man. (4 hours)	\$440.00 \$ 32.00
Hole # 3 from 0 to 50 feet at \$5.00 per foot. Moving from hole #3 to hole # 4, 2 men at \$8.00 per hour per man. (2 hours)	\$250.00 \$ 32.00
Hole # 4 from 0 to 73 feet at \$5.00 per foot Moving from hole # 4 to hole # 5, 2 men at \$8.00 per hour per man. (5 hours)	\$365.00 \$ 40.00





Hole # 5 from 0 to 37 feet at \$5.00 per foot.	\$187.50
Moving from hole # 5 to hole # 6, 2 men at \$8.00 per hour per man. ( 2 hours)	\$ 32.00
Hole # 6 from 0 to 50 feet at 5.00 per foot.	\$250.00
Moving from hole #6 to hole # 7, 2 men at \$8.00 per hour per man. ( 3 hours )	\$ 48.00
Hole # 7 from 0 to 201 feet at \$5.00 per foot.	\$1005.00
Planks for drill set up.	\$ 35.00
Core boxes, 45 at \$1.00 per box.	\$ 45.00
Chain saw rental \$8.00 per day for 3 days.	\$ 24.00

TOTAL	<u>\$4170.00</u>
LES	<u>\$1500.00</u>
BALANCE	<u>\$2670.00</u>

Gene Peltzman



BALLINEERY EXPLORATIONS LTD.

B 248 - Merritt, B.C.

OUR NUMBER

13069

DATE

May 29/75

CUSTOMER'S ORDER

PAUSE

TELEPHONE

FAX

SOLD TO GERHARD VON ROSSEN  
FOR NINE PYRAMID GOLD MINES LTD.

SHIPPED TO \_\_\_\_\_

ADDRESS \_\_\_\_\_ VIA \_\_\_\_\_

INVOICE

DRILL RENTAL FOR 1 MONTH FROM MAY 8/75 TO JUNE 8/75			\$2250.00
ADVANCE PAYMENT			500.00
BALANCE DUE			1750.00
			165.00
			\$1585.00

PAID #1585.00

less Com. [unclear] fees  
Paid [unclear] #157 [unclear]  
3/75



BLUELINE D 32



# J. K. SMIT & SONS DIAMOND PRODUCTS LIMITED

81 TYCOS DRIVE  
TORONTO, ONTARIO M6B 1W5  
Tel: 781-3534

1401 PITFIELD BOULEVARD,  
VILLE ST. LAURENT, QUEBEC H4S 1G3  
Tel: 332-0250

46 EAST 3rd. AVENUE.  
VANCOUVER, B.C. V5T 1C3  
Tel: 879-9251

PLEASE REMIT TO:   
S.V.P. REMETTEZ A:

XX

J.K.S. J.K.S.	ORDER NO. COMMANDE	CUSTOMER ORDER NO./NO. COMMANDE DU CLIENT	AND DATE REC'D/ ET DATE REÇUE	INVOICE DATE	DATE DE FACTURE
	9449		May 8, 1975	May 9, 1975	

SOLD TO: New Pyramid Gold Mines Inc.  
300 - 890 W. Pender St.  
Vancouver, B.C.

F.O.B./F.A.B.	COMPART	BAL.
	XX	

TERMS/TERMES

SHIP VIA:

INVOICE NO. DE FACTURE	P.F.D.	COLL.
61-5-75		

SHIP TO:  
EXPÉDIE A:

Pick up

B/C	ORDERED COMMANDEE	THIS SHIP CETTE EXP.	DESCRIPTION & SERIAL NUMBERS DESCRIPTION & NO DE SÉRIE	UNIT UNITÉ	UNIT PRICE PRIX UNITAIRE	AMOUNT MONTANT
	4	4	128N16 NO corelifters		6.40	25.60
	2	2	128N43 NO corelifter cases		20.95	41.90
	1	1	NX Casing pin to NW Casing box		22.00	22.00
	1	1	NO stabilizer 128N44		23.00	23.00
<b>SUB/SOUS TOTAL</b>						<b>1123.65</b>

*Paid by cheque  
May 9/75  
Labana*



AMOUNT SUBJ. TO P.S.T. MONTANT SUJET A T.V.P.	FED. SALES TAX TAX DE VENTE FÉDÉRALE	SUB TOTAL SOUS TOTAL	AMOUNT SUBJ. TO P.S.T. MONTANT SUJET A T.V.P.	PROV. SALES TAX TAX DE VENTE PROV.	SHIPPING CHARGES FRAIS D'EXPÉDITION	TOTAL/MONTANT
Schedule III			1123.65	* 56.18		\$ 1179.83

CONDITIONS OF SALE FOR DIAMONDS IN MINING PRODUCTS  
SÉRIE 128 N 16, 43 ET 44

WE SERVE TO OUR CUSTOMERS AND TO FACILITATE THE NOTATION OF DIAMONDS, WE WILL ACCEPT DIAMOND STONE RECEIVED FROM USED ITEMS AS A CREDIT ONLY AGAINST SUBSEQUENT ORDERS FOR NEW ITEMS OF THE SAME PRODUCT LINE WHERE THE WEIGHT OF DIAMONDS SET IN THE NEW ITEM ORDERED DOES NOT EQUAL THE WEIGHT OF DIAMONDS EXTRACTED FROM USED ITEMS. WE WILL HOLD ANY EXCESS OF DIAMONDS IN SAFE-KEEPING FOR YOU AND SUBJECT TO YOUR ORDER, WE DO NOT OBLIGATE OURSELVES AT ANY TIME TO PURCHASE OR TAKE BACK NEW OR USED DIAMONDS FOR CREDIT.

CONDITIONS DE VENTE CONCERNANT LES ARTICLES DIAMANTÉS

AFIN D'ACCOMMODER NOS CLIENTS ET POUR FACILITER LA NOTATION DES DIAMANTS, NOUS ACCEPTERONS DE CRÉDITER LES DIAMANTS RÉCUPÉRÉS PROVENANT DES ARTICLES DIAMANTÉS USAGÉS, LEQUEL CRÉDIT POURRA ÊTRE UTILISÉ SOUS ÉCRITURE CONTRE DES ARTICLES SUBSÉQUENTS DE PRODUITS NEUFS DE LA MÊME CATÉGORIE, LORSQUE LE POIDS TOTAL DES ARTICLES NEUFS AINSI COMMANDÉS N'ÉGALERA PAS LE POIDS DES DIAMANTS RÉCUPÉRÉS DES ITEMS USAGÉS. NOUS RETIENDRONS L'EXCÉDENT EN SÛRETÉ, SUJET À VOS COMMANDES SUBSÉQUENTES, NOUS NE NOUS ENGAGEONS EN AUCUN CAS À ACHETER OU REPRENDRE AUCUN DIAMANT NEUF OU USAGÉ.

NOTE: NO CREDIT WILL BE SET OFF WITH-OUT YOUR AUTHORITY. SETTING CHARGES ON NEW ITEMS ARE NOT REFUNDABLE.

AVIS: AUCUN ARTICLE RETOURNÉ NE SERA ACCEPTÉ SANS AUTORISATION PRÉALABLE. LE PRIX DU MONTAGE DES COURONNES DIAMANTÉES NEUVE N'EST PAS REMBOURSABLE.



# J. K. SMITH & SONS DIAMOND PRODUCTS LIMITED

81 TYCOS DRIVE  
TORONTO, ONTARIO M6B 1W5  
Tel: 781-3534

1401 PITFIELD BOULEVARD,  
VILLE ST. LAURENT, QUEBEC H4S 1G3  
Tel: 332-0250

46 EAST 3rd. AVENUE.  
VANCOUVER, B.C. V5T 1C3  
Tel: 879-9251

PLEASE REMIT TO:  
S.V.P. REMETTEZ A

J.K.S. ORDER NO. / J.K.S. MANDE	CUSTOMER ORDER NO./NO. COMMANDE DU CLIENT	AND DATE REC'D/ET DATE REÇUE	INVOICE DATE	DATE DE FACTURE
9567		May 23, 1975	May 23, 1975	

SOLD TO : New Pyramid Gold Mines Inc.  
300 - 890 W. Pender St.  
Vancouver, B.C.

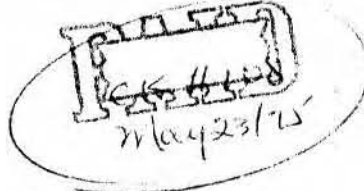
VENDU A :

F.O.B./F.A.B.	COMP	PART	BAL
	XX		
TERMS/TERMES			
30			
INVOICE NO. DE FACTURE	P.P.D.	COLL	
206-5-75			

SHIP VIA:  
Pick up

SHIP TO :  
EXPÉDIE A :

B/O	ORDERED / COMMANDE	THIS SHIP / CETTE EXP	DESCRIPTION & SERIAL NUMBERS / DESCRIPTION & NO. DE SÉRIE	UNIT / UNITE	UNIT PRICE / PRIX UNITAIRE	AMOUNT / MONTANT
	1	1	Setting NO Corrig bits 200 Series 4 steps 3 W.C. 3 Carbide inserts at W.C. 6 Carbide tips on I.D. 9 Carbide tips on O.D. Hard Matrix Grade AA 5277		86.00	86.00
			Bortz 9.49 Cts.		21.50	204.04
	6	6	128N16 NO corelifters		6.40	38.40
<b>SUB/SOUS TOTAL</b>						328.44



AMOUNT SUBJECT TO F.S.T. / MONTANT SUJET À T.V.F.	FED. SALES TAX / TAXE DE VENTE FÉDÉRALE *	SUB TOTAL / SOUS TOTAL	AMOUNT SUBJ. TO P.S.T. / MONTANT SUJET À T.V.P.	PROV. SALES TAX / TAXE DE VENTE PROV. *	SHIPPING CHARGES / FRAIS D'EXPÉDITION	TOTAL/MONTANT *
			328.44	16.42		\$344.86

**CONDITIONS OF SALE FOR DIAMOND SET MINING PRODUCTS INDUSTRIAL BITS AND SAWS.**

AS A SERVICE TO OUR CUSTOMERS AND TO FACILITATE THE ROTATION OF DIAMONDS, WE WILL ACCEPT USABLE STONES RECOVERED FROM USED ITEMS AS A CREDIT ONLY AGAINST SUBSEQUENT ORDERS FOR NEW ITEMS IN THE SAME PRODUCT LINE WHERE THE WEIGHT OF DIAMONDS SET IN THE NEW ITEM ORDERED DOES NOT EQUAL THE WEIGHT OF DIAMONDS RECOVERED FROM USED ITEMS, WE WILL HOLD ANY EXCESS OF USABLE DIAMONDS IN SAFE-KEEPING FOR YOU AND SUBJECT TO YOUR ORDER, WE DO NOT OBLIGATE OURSELVES AT ANY TIME TO PURCHASE OR TAKE BACK NEW OR USED DIAMONDS FOR CREDIT.

**CONDITIONS DE VENTE CONCERNANT LES ARTICLES DIAMANTÉS**

AFIN D'ACCOMMODER NOS CLIENTS ET POUR FACILITER LA ROTATION DES DIAMANTS, NOUS ACCEPTERONS DE CRÉDITER LES DIAMANTS RÉCUPÉRÉS PROVENANT DES ARTICLES DIAMANTÉS USAGÉS, LEQUEL CRÉDIT SERA ÉMIS SEULEMENT LORSQUE LES ARTICLES SUBSÉQUENTS NE SONT PAS NEUFS DE LA MÊME CATÉGORIE, LORSQUE LE POIDS TOTAL DES ARTICLES NEUFS AINSI COMMANDÉS N'ÉGALERA PAS LE POIDS DES DIAMANTS RÉCUPÉRÉS DES ITEMS USAGÉS, NOUS RETIENDRONS L'EXCÉDENT EN SÛRETÉ, SUJET À VOS COMMANDES SUBSÉQUENTES, NOUS NE NOUS ENGAGEONS EN AUCUN CAS À ACHETER OU REPRENDRE AUCUN DIAMANT NEUF OU USAGÉ.

NOTE: NO GOODS MAY BE RETURNED WITH-OUT A RECEIPT FROM THE SETTING DEPARTMENT OR THE SUBJECT DEPARTMENT.

AVIS: AUCUN ARTICLE ESTOURNE SE SERA ACCEPTÉ SANS AUTORISATION PRÉ-ALABLE. LE PRIX DU MONTAGE DES COURONNES DIAMANTÉES NEUVES N'EST PAS REMBOURSABLE.

ORIGINAL INVOICE  
FACTRUE ORIGINALE



**CANADIAN LONGYEAR LIMITED**  
DIAMOND AND CORE DRILLS

HEAD OFFICE AND MANUFACTURING PLANT  
P.O. BOX 330 NORTH BAY, ONTARIO

**BRANCH OFFICE**

721 ALFORD, ANNACIS ISLAND,  
NEW WESTMINSTER, B.C. V3M 5P5  
TELEPHONE (604) 524-2511 TELEX 04-351280

SHIPPED

Pick Up

SOLD TO

New Pyramid Gold Mines  
300 - 890 W. Pender Street  
Vancouver, B. C.

F.O.B.		ORDER DATE MO. DAY YR.			SHIPPING ORDER NO.
ANNACIS WHSE.					
PPD.	COLL.	PPD. CH.	SHIPPING INSTRUCTIONS		
			Pick Up		
SHIPPED VIA		DATE SHIPPED MO. DAY YR.		INVOICE NO.	
Pick Up		May 13 75		6124727	
CODE	TERR.	SALES		PLEASE REFER TO THIS INVOICE NO. ON ALL CORRESPONDENCE.	
	062	06			
INVOICE DATE MO. DAY YR.		GROSS WEIGHT		NET WEIGHT	NO. OF PKGS.
May 13 75		12 lbs.			1

CUSTOMER ORDER NO. FED. SALES TAX INCL. EXTRA EXEMPT. PROV. SALES TAX INCL. EXTRA EXEMPT. NO. OF INV. TERMS SHIPPED FROM

1 Cheque VANCOUVER

ITEM	QTY.	ORD.	SIZE AND DESCRIPTION	PART NO.	UNIT PRICE	BACK ORDER	QUANTITY SHIPPED	AMOUNT
1	1		WQ Chuck Jaws	15870	63.55		1	63.55
2	4		Chuck Bushing	16937	13.00		4	52.00
3	4		Chuck Screws	15024	9.60		4	38.40
								153.95
Plus 5% Prov. Sales Tax								7.70
								161.65
Plus Bus Charges (copy attached)								3.65
								165.30
Please note that there is a balance of \$11.35 outstanding for provincial tax in the amount of 7.70 and the bus charges to Princeton in the amount of \$3.65 = 11.35								

*PAID*  
*JULY 31/75*  
*CK # 162*  
*\$165.30*

**ORIGINAL INVOICE**

TERMS: NET 30 DAYS UNLESS OTHERWISE STATED. INTEREST AT 18% PER ANNUM CHARGED ON OVERDUE ACCOUNTS.



# Broadway Bulldozing Co. Ltd.

Princeton, B.C. MAY 5 1955

TO: NEW PYRAMID GOLD MINES  
300 - 890 WEST PENDER  
VANCOUVER B.C.

DCC TRACTOR			
WORK DONE AT POT HOLE LAKE ASPEN GROVE.			
8 HRS @ \$36.50 PER HR.			\$ 292.00
LOOPER 5 HRS @ \$25.00			125.00
			\$ 417.00
<p>PAID JULY 3/75 \$ 417.00</p>			
			417.00

1 1/2% Interest Charged On Overdue Accounts