

REPORT ON PERCUSSION DRILLING

DAWN AND LYNN CLAIMS

5785

LORNEX MINING CORPORATION LTD.

by

M.W. Waldner
G.D. Smith

December 1975

Claims:

Dawn #1 - #5
Dawn #7
Lynn #1 - #4
Lynn #6

Location:

Highland Valley

- About 24 miles southeast of Ashcroft, B.C.
Kamloops Mining Division
121 00' W, 50 27' N, N.T.S. 92-I/6E

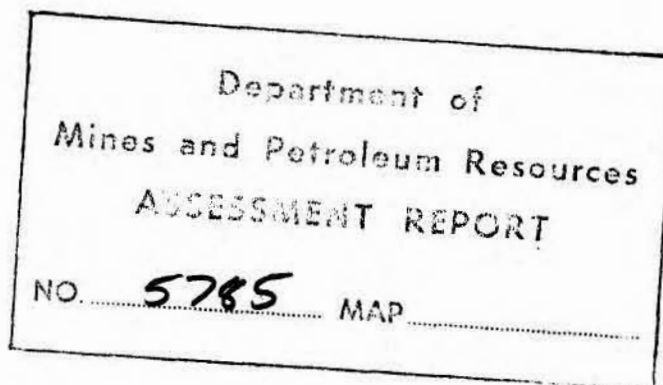


Table of Contents

	Page
Summary	2
Introduction	3
Location and Access	3
Percussion Drilling Results	4
Conclusions and Recommendations	6

Appendices

- I List of personnel and costs.
- II Statement of Qualifications.
- III Assay Results.

Maps and Illustrations

- 1 Figure A Location Map.
- 2 Figure B Drill Hole Locations.
- Drawing 1 Section D.H. 75-1 (Total Copper Assays).
- Drawing 2 Section D.H. 75-2 (Total Copper Assays).
- Drawing 3 Section D.H. 75-3 (Total Copper Assays).
- Drawing 4 Section D.H. 75-4 (Total Copper Assays).
- Drawing 5 Section D.H. 75-5 (Total Copper Assays).
- Drawing 6 Section D.H. 75-6 (Total Copper Assays).
- Drawing 7 Section D.H. 75-7 (Total Copper Assays).
- Drawing 8 Section D.H. 75-8 and D.H. 75-8A (Total Copper Assays).
- Drawing 9 Section D.H. 75-9 (Total Copper Assays).
- Drawing 10 Section D.H. 75-10 (Total Copper Assays).

Report on Percussion Drilling

Dawn and Lynn Claims

Summary

Eleven percussion holes were drilled on the Dawn and Lynn claims in the Highland Valley area of British Columbia.

Assay results indicate the copper and molybdenum mineralization in the areas tested are non-economic.

Introduction

During June 1975, eleven percussion holes were drilled on the Lynn and Dawn claims owned by Lornex Mining Corporation Ltd. and located in the Highland Valley of British Columbia.

Drilling continued from June 21, 1975 to June 30, 1975 under contract to Al Miller Percussion Drilling Limited of Kamloops, B.C. and was under supervision of M.W. Waldner and G.D. Smith.

A total of 2540 feet in eleven percussion drill holes were completed to test for the existence of copper and molybdenum mineralization.

One percussion drill hole was drilled on Dawn #1 to #4 and #7 mineral claims, Lynn #1, #2, #4 and #6 mineral claims and two holes were drilled on Dawn #5 mineral claim because of poor ground conditions on the first set-up.

Sludge samples were collected each ten foot interval and the samples were assayed for total copper and molybdenum by the Lornex assay laboratory using atomic absorption technique.

Location and Access

The claims are located in the Highland Valley of B.C., latitude 50° 27'N, longitude 121° 00'W, N.T.S. 92-I/6E. The property is about 24 miles by road southeast from Ashcroft between Lornex Mining Corporation Ltd. and Highmond Mining Corporation Ltd.

Percussion Drilling Results

A truck-mounted percussion drill was used to drill eleven holes. All drill sites, access roads and water sumps were prepared prior to commencement of the drill program.

Holes were drilled vertical and all but one were drilled at least 200 feet into bedrock. Overburden depths ranged from 0 to 110 feet but averaged approximately 50 feet. Two hundred two 10 foot sludge samples were taken in bedrock. Only four samples assayed over 0.10% total copper, and only one returned an assay of more than 0.15% total copper over ten feet. The average molybdenum values were 0.002% molybdenum.

Plans and cross-sections of the drill holes and assay results are appended.

The following is a resumé of drill hole results:

D.H. 75-1

The hole was collared and completed June 22, 1975 on Dawn #2 M.C.

Depth	230'
Overburden depth	35'
Av. total Cu.	0.02%
Av. Mo.	0.002%

D.H. 75-2

The hole was collared and completed on June 21, 1975 on Dawn #1 M.C.

Depth	240'
Overburden depth	37'
Av. total Cu.	0.042%
Av. Mo.	0.002%

D.H. 75-3

The hole was collared and completed June 21, 1975 on Lynn #2 M.C.

Depth	270'
Overburden depth	63'
Av. total Cu.	0.016%
Av. Mo.	0.001%

D.H. 75-4

The hole was collared and completed June 23, 1975 on Lynn #1 M.C.

Depth	300'
Overburden depth	105'
Av. total Cu.	0.015%
Av. Mo.	0.003%

D.H. 75-5

The hole was collared and completed June 24, 1975 on Lynn #4 M.C.

Depth	230'
Overburden depth	30'
Av. total Cu.	0.10%
Av. Mo.	0.002%

D.H. 75-6

The hole was collared June 24, 1975 and completed June 25, 1975 on Dawn #3 M.C.

Depth	210'
Overburden depth	4'
Av. total Cu.	0.028%
Av. Mo.	0.002%

D.H. 75-7

The hole was collared and completed June 26, 1975 on Dawn #7 M.C.

Depth	300'
Overburden depth	110'
Av. total Cu.	0.026%
Av. Mo.	0.002%

D.H. 75-8

The hole was collared and abandoned June 25, 1975 on Dawn #5 M.C.

Depth	50'
Overburden depth	20'
Av. total Cu.	0.022%
Av. Mo.	0.002%

D.H. 75-8A

The hole was collared and completed June 25, 1975 on Dawn #5 M.C.

Depth	230'
Overburden depth	24'
Av. total Cu.	0.015%
Av. Mo.	0.002%

D.H. 75-9

The hole was collared and completed June 27, 1975 on Lynn #6 M.C.

Depth	280'
Overburden depth	77'
Av. total Cu.	0.002%
Av. Mo.	0.001%

D.H. 75-10

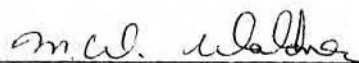
The hole was collared and completed June 28, 1975 on Dawn #4 M.C.

Depth	200'
Overburden depth	0'
Av. total Cu.	0.03%
Av. Mo.	0.002%

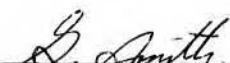
Conclusions and Recommendations

With the exception of one assay of 0.86% total copper over 10 feet in hole #75-5 the copper and molybdenum grades were non-economic. The percussion drilling program results concur with previous exploration program in the area.

No further work is recommended based upon information obtained on this and previous exploration programs.



M. W. Waldner
Mine Geologist



G. D. Smith
Field Geologist

Claim Name	Bulldozer & Operator @\$60/hour		Percussion Drilling @\$2.75/foot		Assaying @\$10/sample		Total
	hours	Cost	footage	Cost	Samples	Cost	
Dawn #1	3	\$180	240	\$660	20	\$200	\$1,040.00
Dawn #2	2	\$120	230	\$632.50	19	\$190	\$ 942.50
Dawn #3	5	\$300	210	\$577.50	20	\$200	\$1,077.50
Dawn #4	3	\$180	200	\$550	19	\$190	\$ 920.00
Dawn #5	6	\$360	280	\$770	23	\$230	\$1,360.00
Dawn #7	4	\$240	300	\$825	19	\$190	\$1,255.00
Lynn #1	4	\$240	300	\$825	20	\$200	\$1,265.00
Lynn #2	2	\$120	270	\$742.50	21	\$210	\$1,072.50
Lynn #3	2	\$120					\$ 120.00
Lynn #4	2	\$120	230	\$632.50	20	\$200	952.50
Lynn #6	4	\$240	280	\$770	20	\$200	\$1,210.00
		\$2,220		\$6,985		\$2,010	\$11,215.00

1974, 3/4 ton, Chevrolet, 4X4 pickup truck
 1/2 X 20 days @ \$38.50/day = \$ 385.00

Employee	Position	Work Done	No. of days Worked	Cost/day	
M.W. Waldner	Mine Geologist	Program planning supervision & report writing	12	\$130	\$ 1,560.00
G.D. Smith	Field Geologist	Field work surveying & report	15	\$115	\$ 1,725.00
E. Milne	Surveyor	Surveying	1	\$ 85	\$ 85.00
Surveying done by McElhanney					\$ 1,092.69
Grand Total					<u>\$16,062.69</u>

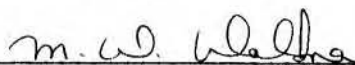
nb. See attached invoices for surveying and percussion drilling

Appendix II

Statement of Oualifications

M. W. Waldner


1. I graduated with a B.Sc. in geology from the University of B.C. in 1969.
2. I have been employed as an exploration and mine geologist for more than six years.
3. I have supervised drilling programs and written reports in positions with Endako Mines Ltd. and Lornex Mining Corp. Ltd.
4. Statements made in this report are based upon geological and drilling information.



M. W. Waldner,
Mine Geologist.

G. D. Smith

1. I graduated with a B.Sc. in geology from the University of B.C. in 1972.
2. I have been employed with Lornex Mining Corp. Ltd. as a geologist since 1972.



G. D. Smith,
Pit Geologist.

LORNEX MINING CORPORATION LTD.

ASSAY REPORT

MINE DEPARTMENT
SLUDGE #1

Date Sampled: JUNE, 1975.

D.H. 75-1

ORDER NO.	SAMPLE NO. Footage	LOCATION/DESCRIPTION	TOTAL % CU.	OXIDIZED % CU.	TOTAL % MO.
1	35-50	107,810 - 89,280.	0.02		0.003
2	50-60		0.03		0.003
3	60-70		0.02		0.002
4	70-80		0.02		0.003
5	80-90		0.02		0.003
6	90-100		0.02		0.003
7	100-110		0.02		0.001
8	110-120		0.01		0.001
9	120-130		0.02		0.002
10	130-140		0.02		0.002
11	140-150		0.02		0.006
12	150-160		0.02		0.002
13	160-170		0.02		0.001
14	170-180		0.03		0.002
15	180-190		0.02		0.002
16	190-200		0.02		0.003
17	200-210		0.02		0.003
18	210-220		0.02		0.003
19	220-230		0.02		0.002
20					
21					

Date Reported: JUNE 26, 1975

Ch. Chemist: D. LINCOLN

lll

LORNEX MINING CORPORATION LTD.

ASSAY REPORT

MINE DEPARTMENT

Date Sampled: JUNE 24, 1975.

SLUDGE #2

D.H. 75-2

ORDER NO.	SAMPLE NO. <i>Footage</i>	LOCATION/DESCRIPTION	TOTAL % CU.	OXIDIZED % CU.	TOTAL % MO.
1	37-50	<i>109,035 89,615</i>	0.015		0.0020
2	50-60		0.020		0.0015
3	60-70		0.030		0.0020
4	70-80		0.025		0.0020
5	80-90		0.050		0.0045
6	90-100		0.035		0.0045
7	100-110		0.025		0.0025
8	110-120		0.030		0.0020
9	120-130		0.025		0.0030
10	130-140		0.030		0.0025
11	140-150		0.020		0.0020
12	150-160		0.020		0.0025
13	160-170		0.080		0.0025
14	170-180		0.070		0.0025
15	180-190		<u>0.125</u>		0.0060
16	190-200		0.050		0.0025
17	200-210		0.045		0.0020
18	210-220		0.045		0.0010
19	220-230		0.050		0.0030
20	230-240		0.050		0.0025
21		<i>Average</i>	0.042		0.0024

Date Reported: JUNE 24, 1975

Ch. Chemist: D. LINCOLN

LORNEX MINING CORPORATION LTD.

ASSAY REPORT

MINE DEPARTMENT

Date Sampled: JUNE 25, 1975.

SLUDGE #3 D.H. 75-3

ORDER NO.	SAMPLE NO. Footage	LOCATION/DESCRIPTION	TOTAL % CU.	OXIDIZED % CU.	TOTAL % MO.
1	63-70	110,835 - 89,370	0.010		0.0005
2	70-80		0.010		0.0005
3	80-90		0.005		0.0005
4	90-100		0.015		0.0010
5	100-110		0.010		0.0010
6	110-120		0.015		0.0005
7	120-130		0.010		0.0010
8	130-140		0.025		0.0005
9	140-150		0.015		0.0015
10	150-160		0.005		0.0005
11	160-170		0.015		Trace
12	170-180		0.010		0.0005
13	180-190		0.010		0.0010
14	190-200		0.010		0.0010
15	200-210		0.015		0.0015
16	210-220		0.010		0.0015
17	220-230		0.040		0.0020
18	230-240		0.020		0.0020
19	240-250		0.035		0.0020
20	250-260		0.035		0.0015
21	260-270		0.035		0.0015

Date Reported: JUNE 25, 1975

Ch. Chemist: D. LINCOLN

LORNEX MINING CORPORATION LTD.

ASSAY REPORT

INE DEPARTMENT

Date Sampled: JUNE 24, 1975.

SLUDGE #4

DH. 75-4

ORDER NO.	SAMPLE NO. <i>Footage</i>	LOCATION/DESCRIPTION	TOTAL % CU.	OXIDIZED % CU.	TOTAL % MO.
1	105-110	<i>112,600 - 89,015.</i>	0.02		0.002
2	110-120		0.01		0.003
3	120-130		0.01		0.003
4	130-140		0.01		0.003
5	140-150		0.03		0.003
6	150-160		0.02		0.003
7	160-170		0.01		0.001
8	170-180		0.01		0.002
9	180-190		0.01		0.002
10	190-200		0.01		0.003
11	200-210		0.02		0.003
12	210-220		0.02		0.003
13	220-230		0.02		0.002
14	230-240		0.02		0.004
15	240-250		0.03		0.003
16	250-260		0.04		0.003
17	260-270		0.02		0.002
18	270-280		0.01		0.002
19	280-290		0.01		0.002
20	290-300		0.01		0.003
21					

Reported: JUNE 26, 1975

Ch. Chemist: D. LINCOLN

LORNEX MINING CORPORATION LTD.

ASSAY REPORT

MINE DEPARTMENT
SLUDGE #5

Date Sampled: JUNE 24, 1975.

D.H. 75-5

ORDER NO.	SAMPLE NO. <i>Footage</i>	LOCATION/DESCRIPTION	TOTAL % CU.	OXIDIZED % CU.	TOTAL % MO.
1	30-40	* note re assay re .70% Cu..	0.86	0.014	0.003
2	40-50	111,175. 87,775.	0.12	0.006	0.004
3	50-60		0.07		0.003
4	60-70		0.05		0.001
5	70-80		0.07		0.003
6	80-90		0.07		0.001
7	90-100		0.07		0.001
8	100-110		0.06		0.001
9	110-120		0.06		0.001
10	120-130		0.04		0.001
11	130-140		0.03		0.001
12	140-150		0.05		0.001
13	150-160		0.07		0.001
14	160-170		0.07		0.002
15	170-180		0.09		None
16	180-190		0.05		0.001
17	190-200		0.08		0.002
18	200-210		0.05		0.001
19	210-220		0.04		0.002
20	220-230		0.03		0.004
21					

Date Reported: JUNE 26, 1975

Ch. Chemist: D. LINCOLN

LORNE MINING CORPORATION LTD.

ASSAY REPORT

MINE DEPARTMENT

Date Sampled: JUNE 26, 1975.

SLUDGE #6

D.H. 75-6

ORDER NO.	SAMPLE NO. <i>Footage</i>	LOCATION/DESCRIPTION	TOTAL % CU.	OXIDIZED % CU.	TOTAL % MO.
1	4-20	109,605 - 87,880-	0.01		0.001
2	20-30		0.03		0.002
3	30-40		0.01	.030	0.001 .002
4	40-50		0.01		0.002
5	50-60		0.02		0.002
6	60-70		0.02		0.002
7	70-80		0.01		0.003
8	80-90		0.02		0.002
9	90-100		0.02		0.002
10	100-110		0.02		0.002
11	110-120		0.02		0.001
12	120-130		0.06	.005	0.001 .002
13	130-140		0.05		0.002
14	140-150		0.03		0.001
15	150-160		0.04		0.003
16	160-170		0.04		0.001
17	170-180		0.03		0.002
18	180-190		0.04		0.002
19	190-200		0.04		0.003
20	200-210		0.04		0.003
21					

Date Reported: JUNE 27, 1975

Ch. Chemist: D. LINCOLN

LORNE MINING CORPORATION LTD.

ASSAY REPORT

MINE DEPARTMENT

Date Sampled: JUNE 28, 1975.

SLUDGES

ORDER NO.	SAMPLE NO. <i>Footings</i>	LOCATION/DESCRIPTION	TOTAL % CU.	OXIDIZED % CU.	TOTAL % MO.
1	#6-30-40	D.H. 75-6	0.030		0.002
2	120-130	D.H. 75-6	0.005		0.002
3	#7 110-120	D.H. 75-7 [109,670 - 85,280]	0.015		0.002
4	120-130	"	0.145		0.002
5	130-140	"	0.020		0.002
6	140-150	"	0.020		0.002
7	160-170	"	0.015		0.002
8	170-180	"	0.010		0.002
9	180-190	"	0.010		0.002
10	190-200	"	0.015		0.002
11	200-210	"	0.020		0.002
12	210-220	"	0.015		0.002
13	220-230	"	0.010		0.002
14	230-240	"	0.010		0.002
15	240-250	"	0.015		0.002
16	250-260	"	0.010		0.002
17	260-270	"	0.010		0.002
18	270-280	"	0.020		0.002
19	280-290	"	0.050		0.002
20	290-300	"	0.050		0.002
21					

Date Reported: JUNE 30, 1975

Ch. Chemist: D. LINCOLN

LORNEX MINING CORPORATION LTD.

ASSAY REPORT

LINE DEPARTMENT

Date Sampled: JUNE 26, 1975.

SLUDGE 8A

D.H. 75-8A

ORDER NO.	SAMPLE NO. <i>Footage</i>	LOCATION/DESCRIPTION	TOTAL % CU.	OXIDIZED % CU.	TOTAL % MO.
1	24-40	109,540 - 86,310	0.01		0.002
2	40-50		0.05		0.004
3	50-60		0.01		0.002
4	60-70		0.02		0.001
5	70-80		0.02		0.002
6	80-90		0.02		0.003
7	90-100		0.02		0.002
8	100-110		0.01		0.001
9	110-120		0.01		0.002
10	120-130		0.01		0.002
11	130-140		0.01		0.001
12	140-150		0.01		0.001
13	150-160		0.02		0.001
14	160-170		0.02		0.001
15	170-180		0.03		0.001
16					
17					
18					
19					
20					
21					

Date Reported: JUNE 27, 1975

Ch. Chemist: D. LINCOLN

LORNEX MINING CORPORATION LTD.

ASSAY REPORT

MINE DEPARTMENT

Date Sampled: JUNE 28, 1975.

SLUDGES

ORDER NO.	SAMPLE NO. <i>Footage</i>	LOCATION/DESCRIPTION	TOTAL % CU.	OXIDIZED % CU.	TOTAL % MO.
1	#8 20-30	D.H. 75-8	0.010		0.002
2	30-40	"	0.040		0.003
3	40-50	"	0.015		0.002
4	#8A 180-190	D.H. 75-8A	0.010		0.002
5	190-200	"	0.015		0.001
6	200-210	"	0.010		0.001
7	210-220	"	0.005		0.002
8	220-230	"	0.010		0.002
9					
10					
11					
12					
13					
14					
15					
16					
17					
18					
19					
20					
21					

Date Reported: JUNE 30, 1975

Ch. Chemist: D. LINCOLN

LORNEX MINING CORPORATION LTD.

ASSAY REPORT

MINE DEPARTMENT

Date Sampled: JUNE 29, 1975.

SLUDGE #9

D.H. 75-9

ORDER NO.	SAMPLE NO. Footage	LOCATION/DESCRIPTION	TOTAL % CU.	OXIDIZED % CU.	TOTAL % MO.
1	77-90	111,010 - 86,125.	0.001		0.002
2	90-100		0.003		0.001
3	100-110		0.01		0.001
4	110-120		0.005		0.001
5	120-130		0.001		0.001
6	130-140		0.0015		0.001
7	140-150		0.0015		0.001
8	150-160		0.001		0.001
9	160-170		0.0005		0.001
10	170-180		0.001		0.001
11	180-190		0.0015		0.001
12	190-200		0.0015		0.001
13	200-210		0.0005		0.001
14	210-220		0.0005		0.002
15	220-230		0.0015		0.001
16	230-240		0.001		0.001
17	240-250		0.005		0.001
18	250-260		0.001		0.001
19	260-270		Nil		0.002
20	270-280		0.0005		0.001
21					

Date Reported: JUNE 30, 1975

Ch. Chemist: D. LINCOLN

LORNEX MINING CORPORATION LTD.

ASSAY REPORT

SLUDGE No. 10 SAMPLES

MINING DEPARTMENT

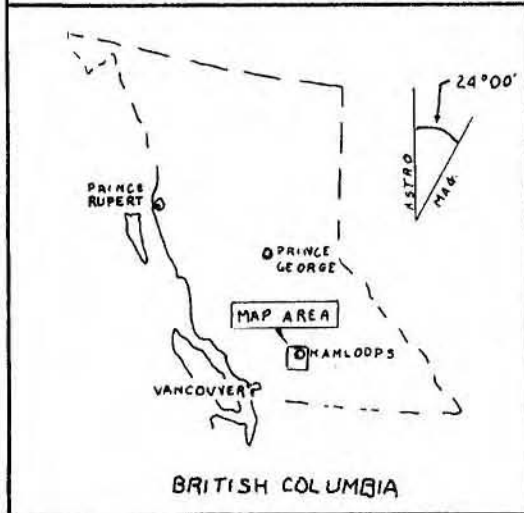
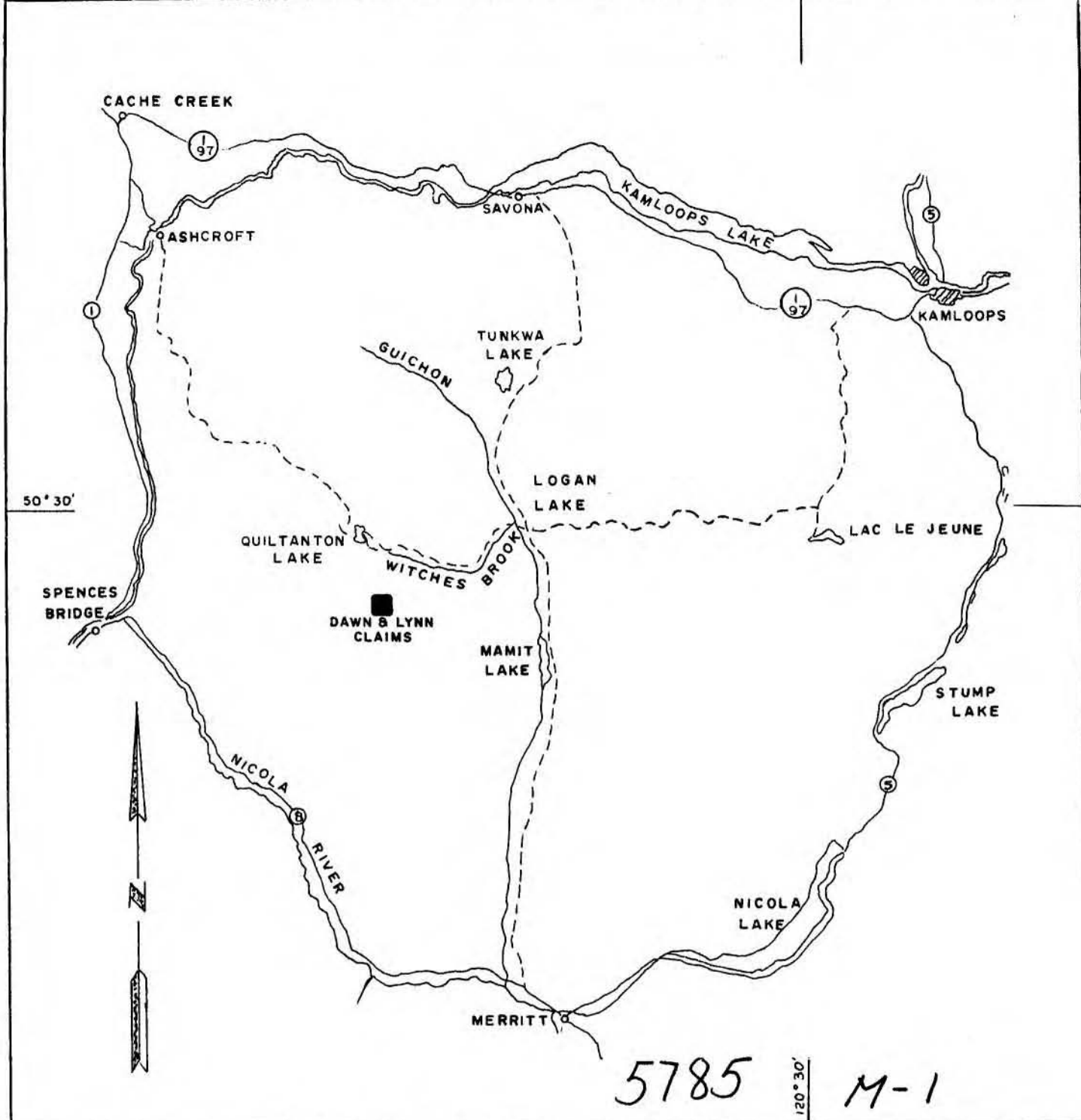
Date Sampled: June 30, 1975

D.H. 75-10

ORDER NO.	SAMPLE NO.	LOCATION/DESCRIPTION	TOTAL % CU.	OXIDIZED % CU.	TOTAL % MO.
1	0-20	<i>107,900 · 88,370</i>	0.03		0.002
2	20-30		0.06		0.002
3	30-40		0.03		0.002
4	40-50		0.03		0.002
5	50-60		0.02		0.002
6	60-70		0.02		0.002
7	70-80		0.01		0.002
8	80-90		0.02		0.002
9	90-100		0.03		0.002
10	100-110		0.03		0.002
11	110-120		0.02		0.001
12	120-130		0.03		0.002
13	130-140		0.03		0.002
14	140-150		0.06		0.003
15	150-160		0.05		0.002
16	160-170		0.05		0.002
17	170-180		0.04		0.002
18	180-190		0.03		0.002
19	190-200		0.03		0.002
20					
21					

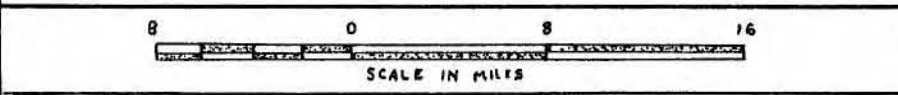
Reported: July 3, 1975

Ch. Chemist: D. LINCOLN

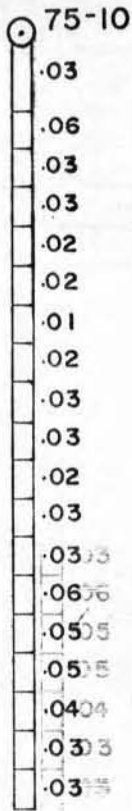


LORNEX MINING CORPORATION LTD.

LOCATION MAP

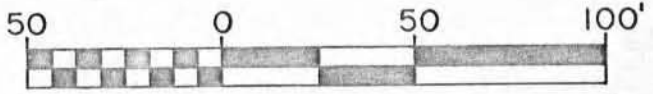


DRAWN BY M. COPPING
 FIGURE A



108,000 E

200'



LORNEX MINING CORPORATION LTD.

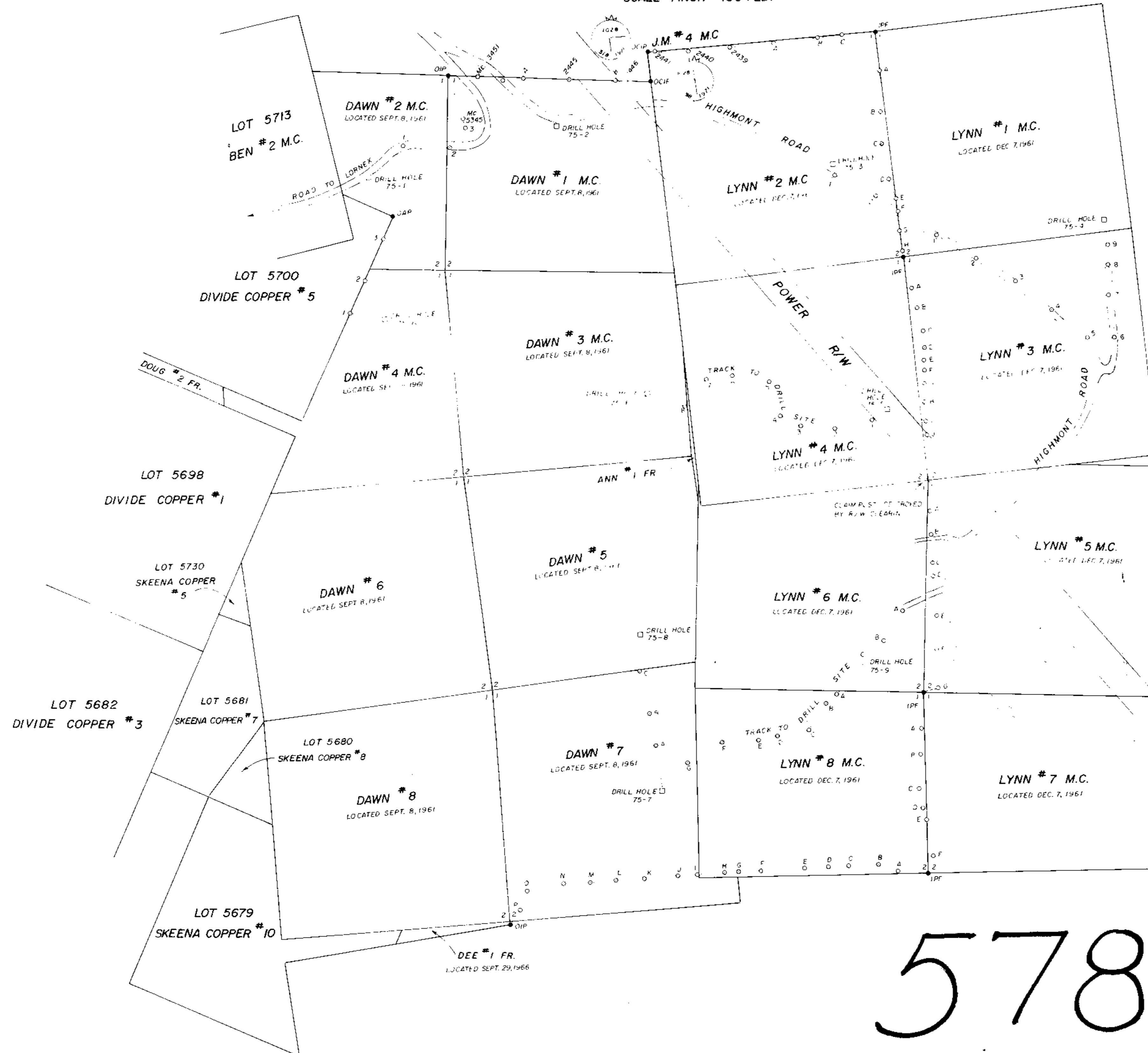
TOTAL COPPER

No.	Date	By	Revision	Date: JULY 75	Drawn by: G.D.S.	Approv.	Drawing No. 10
-----	------	----	----------	------------------	---------------------	---------	-------------------

HIGHLAND VALLEY
 COMPASS AND CHAIN SURVEY
 OF THE LOCATION LINE OF MINERAL CLAIMS
 BEING LYNN 1 TO 8 INCLUSIVE
 KAMLOOPS MINING DIVISION.

SCALE: 1 INCH = 400 FEET

S.J. #92 M.C.



- LEGEND
- OCP DENOTES CAPPED IRON POST FOUND
 - DIP DENOTES IRON POST FOUND
 - OAP DENOTES ALUMINUM POST FOUND
 - IPF DENOTES IRON POST FOUND (NO PREVIOUS RECORD)
 - A DENOTES TRAVERSE POINT
 - DENOTES DRILL HOLE

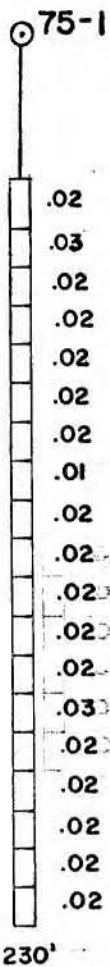
BEARINGS ARE ASTRONOMIC AND DERIVED FROM LOCATION
 LINE OF DAWN 1 AND 2 FROM PLAN, McELMANNEY JOB # 03117-0

M. W. Waldner
 M. W. Waldner

D. D. Smith
 D. D. Smith

5785 M-2
 Department of
 Mines and Technical Resources
 ASSOCIATION OF
 NO. 5785 N.P. 2

FIGURE P
 McELMANNEY ASSOCIATES
 PROFESSIONAL LAND SURVEYORS
 1200 WEST PENDER STREET
 VANCOUVER, B.C.



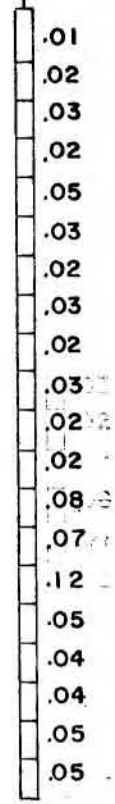
108,000 E.



LORNEX MINING CORPORATION LTD.			
TOTAL COPPER			
Date:	Drawn by:	Approv.	Drawing No.
JULY 75	G.D.S.		1

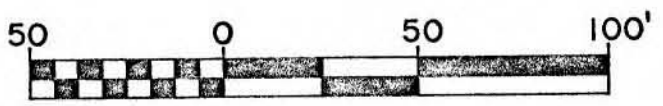
No.	Date	By	Revision

75-2



240'

109,000 E.



LORNEX MINING CORPORATION LTD.

TOTAL COPPER

Date:	Drawn by:	Approv.	Drawing No.
JULY 75	G.D.S.		2

No.	Date	By	Revision

75-3



III,000 E

270'



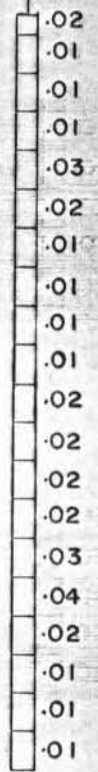
LORNEX MINING CORPORATION LTD.

TOTAL COPPER

Date:	Drawn by:	Approv.	Drawing No.
JULY 75	G.D.S.		3

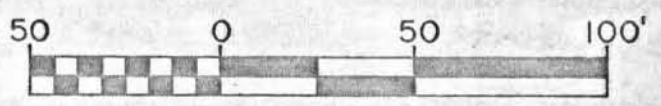
No.	Date	By	Revision

75-4



300'

112,500 E

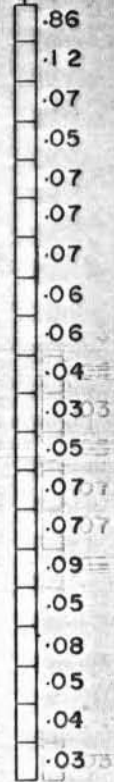


LORNEX MINING CORPORATION LTD.

TOTAL COPPER

No.	Date	By	Revision	Date: JULY 75	Drawn by: G.D.S.	Approv.	Drawing No. 4
-----	------	----	----------	------------------	---------------------	---------	------------------

75-5



111,100 E

230'



LORNEX MINING CORPORATION LTD.

TOTAL COPPER

Date:

JULY 75

Drawn by:

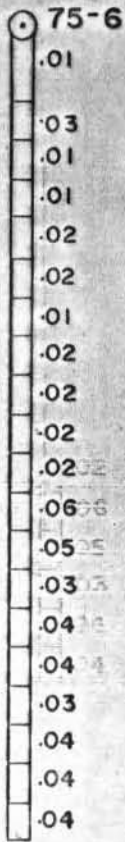
G.D.S.

Approv.

Drawing No.

5

109.500 E



210'



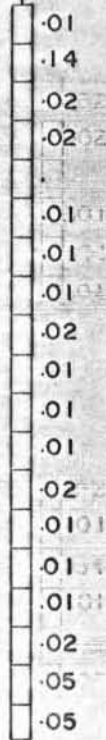
LORNEX MINING CORPORATION LTD.

TOTAL COPPER

Date:	Drawn by:	Approv.	Drawing No.
JULY 75	G.D.S.		6

75-7

109,600 E



300'



LORNEX MINING CORPORATION LTD.

TOTAL COPPER

No.	Date	By	Revision	Date: JULY 75	Drawn by: G.D.S.	Approv.	Drawing No. 7
-----	------	----	----------	------------------	---------------------	---------	------------------

75-9



111,100 E

280'



LORNEX MINING CORPORATION LTD.

TOTAL COPPER

No.	Date	By	Revision	Date: JULY 75	Drawn by: G.D.S.	Approv.	Drawing No. 9
-----	------	----	----------	------------------	---------------------	---------	------------------