

# 5791

## SNOWBIRD GROUP DRILL REPORT W. SCHILLING

82M / 5W

Logged by Gordon P. E. White, P.Eng.

- DDH 2
- 0-13 Schist lt grey--calcareous with occasional dark streaks.
- 13-21 Sporadic f-grd unequid, unequig, dioritic dike.
- 21-49 ls--grey to green argillaceous banded, most banding normal to core axis, with interbedded greenish schistose white flecked, more siliceous units--all units fizz with HCl.
- 49-87 Diorite--foliated fine to medgrained Q vein mat at 78'.
- 87-116 Schist--hard light siliceous, slight fizz. Fractures 45° to core axis are open and usually contain py. Fine py is frequent throughout non dike sections.  
This section contains minor diorite.
- 116-141 Diorite--with variable per cent of mafics.  
Foliation 70° to core axis.
- 141-231 Schist with occasional gneissic bands up to 10 cms. width; schist is light grey to green, feldspar, qtz, mafic, with epidote, chl; carbonate alteration; py common.
- 231-250 Diorite--similar to above--Q veining with vuggy cavities. QV only in diorite.
- 250- End of hole.

#1 LOCATION 1411

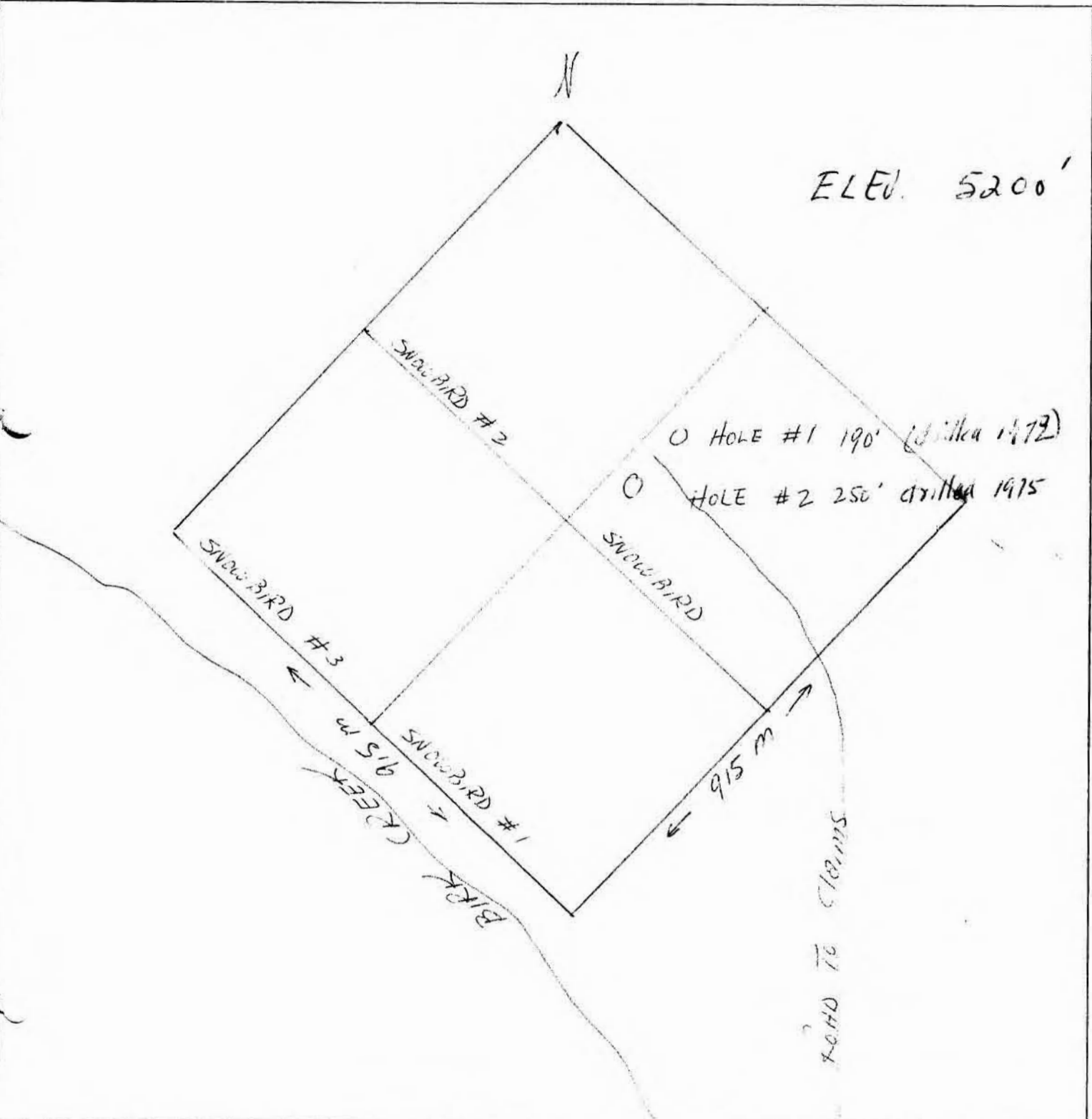
Department of Mines and Petroleum Resources	
ASSESSMENT REPORT	
NO. 5791	MAP .....

5791 M-1



DEPARTMENT OF MINES AND PETROLEUM RESOURCES  
MINERAL RESOURCES BRANCH

SITE PLAN



LOCATION MAP

N.T.S. \_\_\_\_\_ Lat. \_\_\_\_\_ Long. \_\_\_\_\_

31.0 m S 4 miles due west of  
NORTH LAKE

Barriere area

Name property SNOW BIRD GROUP

Claim No. 0-3

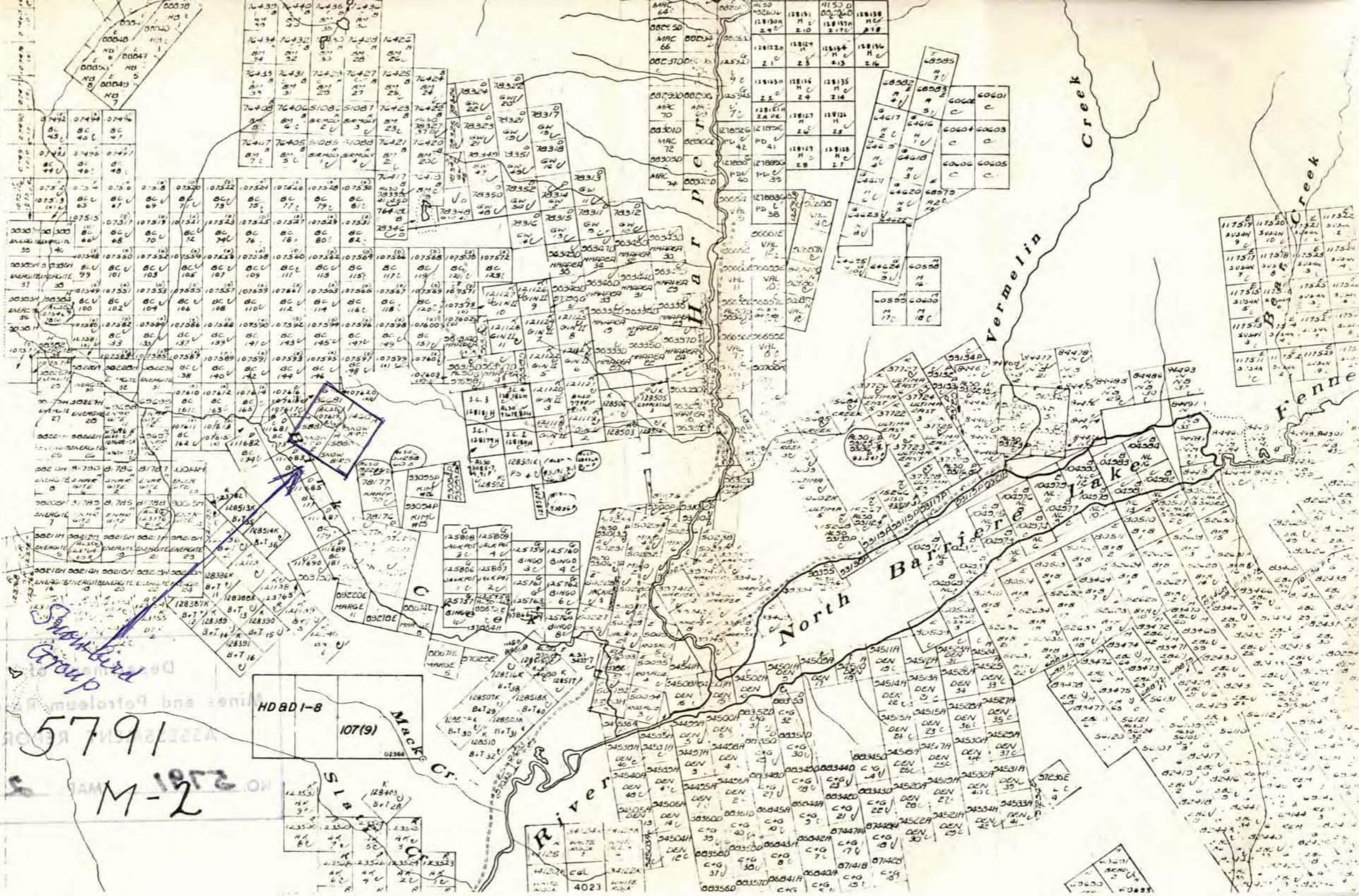
Owner P. SCHILLING } DARFIELD  
W. SCHILLING } BC

Date FEB 6/76

File No. \_\_\_\_\_

TO WEST SEE MAP 92/P/BE

3



2

## STATEMENT

DATE \_\_\_\_\_ 19\_\_\_\_

COST STATEMENT - DRILLING ON  
SNOW BIRD GROUP

DATE	DETAILS	DEBIT	CREDIT	BALANCE
SEPT 1975				
	250' diamond drilling @ <sup>650</sup> 162500 CORE DIAM 3/4"			
	LOCATION OF CORE P. SCHILLING RESIDENCE DARFIELD BC.			