

5816

816

REPORT ON APPLICATION TO RECORD WORK

"WHY" on the
CLAIM GROUP

1976

2133 meters North-North-East Okanagan Falls Post Office

Lat. $49^{\circ} 21' N.$, Long. $119^{\circ} 33' W$ (82E/5EM)

By Owners

Mr. K.G. Ewers; F.M.C. 93421
issued at Penticton, B.C. Jan 19, 1976

Mr. K.G. Thompson; F.M.C. 148447
issued at Rossland B.C. Jan. 9, 1976

Address for all correspondence:

Messrs. Ewers & Thompson
P.O. Box 106
Hody Drive
Okanagan Falls, B.C. V0H 1R0

Work period: ~~Nov. 8~~^{Apr. 6}, 1975 to March 17, 1976

Prepared by: Mr. K.G. Thompson - March 19, 1976

Phone: K.G. Ewers 497-5220 or K.G. Thompson 497-5594

K.G. Thompson March 19/76
E. & O.E.

Department of
Mines and Petroleum Resources
ASSESSMENT REPORT
NO. 5816 MAP x

LOCATION and ACCESS

The "WHY" group of claims is located east of Skaha Lake with its common legal corner post situated approximately 2133 meters N.N.E. of Okanagan Falls Post Office on the East Boundary line of D.L.337, approximately 183 meters true North of the N.W. corner post of Lot 2 of Plan 10521 of Sub Lot 14, D.L. 2710, Plan 1189 at a elevation of approximately 533 meters. It is accessible by means of a dirt bush road running through the middle of the Dusty Mac Mines Ltd (NPL) open pit operations or via a steep, loose sandy road with a locked gate approximately one mile north of Okanagan Falls on Skaha Lake Road. Mileage via Dusty Mac Mines route is approximately 6 miles through Production Lease No. P.3

PROPERTY AND OWNERSHIP

The property comprises a total of four contiguous claims staked in March 1975 by K.G. Thompson and K.G. Ewers of Okanagan Falls, B.C. under record #5 (3), 6 (3), 7 (3) and 8 (3) and tag # 21063, 21064, 21065, 21066.

GENERAL GEOLOGY

On the basis of G.S.C. Map 15-1961 the property has been classified as legend 19 b; conglomerate, sandstone, shale, tuff; minor agglomerate and breccia.

TRAVEL

By 1970 Ford half-ton pick-up and/or 1958 GMC 4-wheel drive three-quarter ton. Return trip equals 12 miles @ 25¢ per mile; Charge rate per day equals \$3.00.

Travel has been prorated to

A. Physical	<u>4</u> trips
C. Prospecting	<u>6</u> trips

10 trips
* =

FIGURE 1

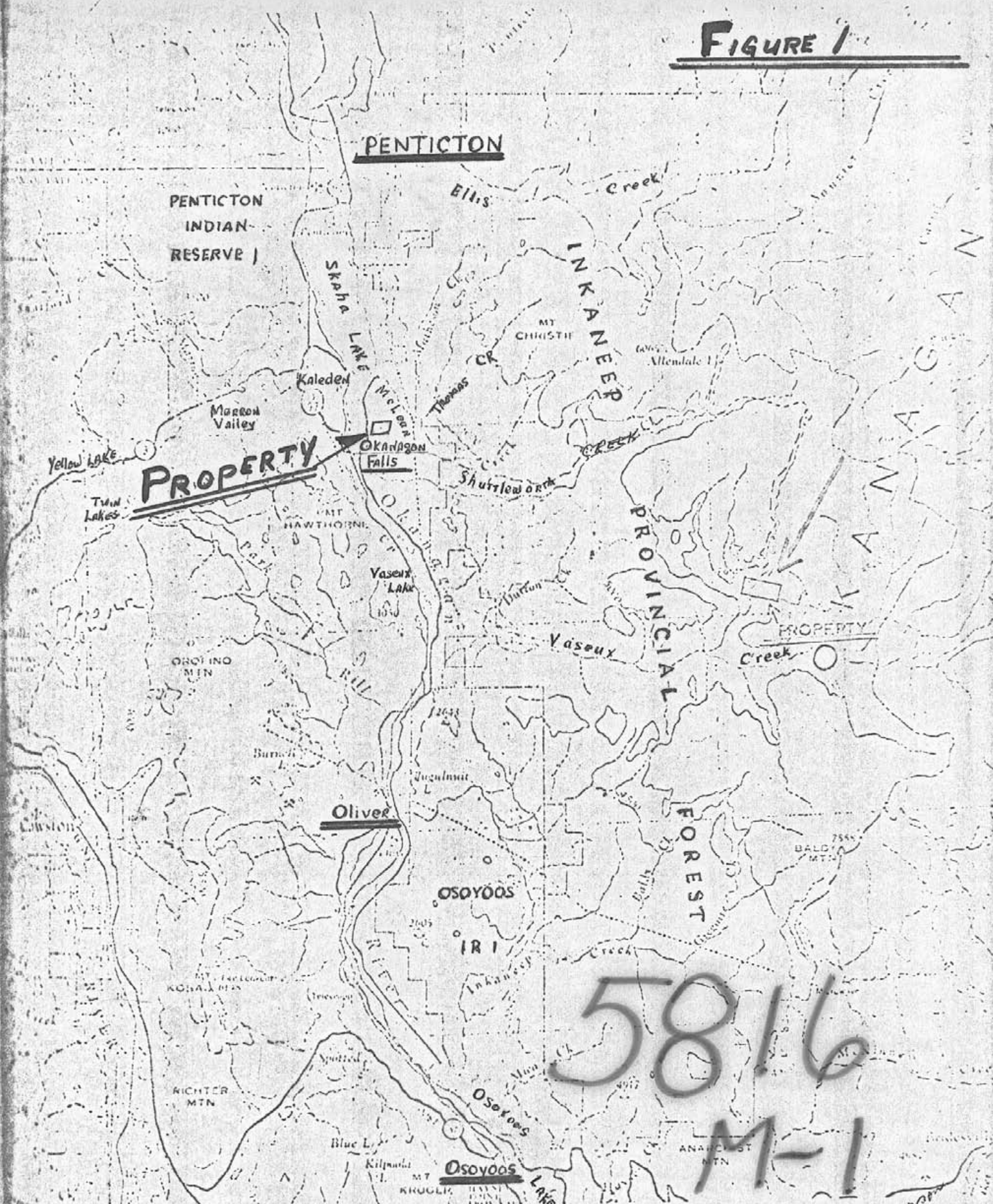


Figure 1. Location Map of WHY group (82E)
Scale 1:250,000.

K. Thompson
Mar 1976

Aeneas I.
Marron Valley

White Lake

Handwritten: Thompson
1919, 1976

5816
Kitley I.

M-2

M/C MAP
82E/5E

2000	2000	2000	2000	2000	2000	2000	2000	2000	2000
2000	2000	2000	2000	2000	2000	2000	2000	2000	2000
2000	2000	2000	2000	2000	2000	2000	2000	2000	2000
2000	2000	2000	2000	2000	2000	2000	2000	2000	2000
2000	2000	2000	2000	2000	2000	2000	2000	2000	2000
2000	2000	2000	2000	2000	2000	2000	2000	2000	2000
2000	2000	2000	2000	2000	2000	2000	2000	2000	2000
2000	2000	2000	2000	2000	2000	2000	2000	2000	2000
2000	2000	2000	2000	2000	2000	2000	2000	2000	2000
2000	2000	2000	2000	2000	2000	2000	2000	2000	2000

PROPERTY

MT CLASS A
PARK
PRUTHE MCELLELLAN 11-3-1957

OKANAGAN
MT HAWTHORNE

Kaleden



TO EAST SEE MAP 82-E/6-W

FIGURE 2

Summary of Work Done

A.- PHYSICAL -

A total of (14) trenches, open cuts or test pits are exposed in (5) general areas as per figure 4.

Drilling was done with a 'ATLAS COPCO' "COBRA" gasoline powered drill. Overburden stripping was done by rubber mounted Tractor Back-hoe.

C. PROSPECTING -

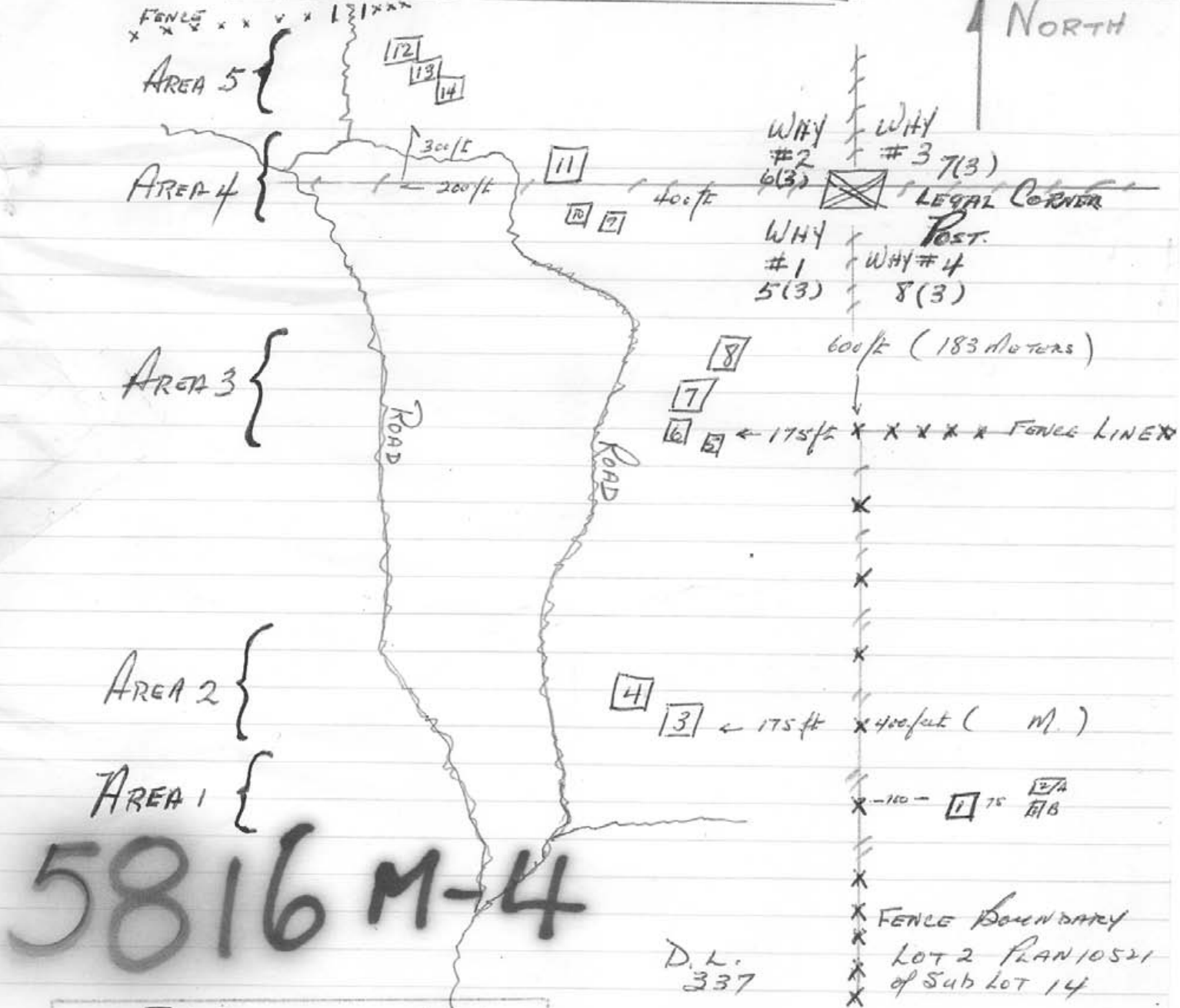
To date prospecting has been of a reconnaissance nature on different rock types to locate zones similar to the mineralized breccia type ore of Dusty Mac Mines to immediate south.

Two geiger counters (one dial type and other a pocket clicker type) have been used. Readings of 2-1/2 times back ground have been obtained but no samples for assay have been submitted to date.

TRENCHES, OPEN CUTS AND TEST PITS

FIGURE 4(A)

NORTH



5816 M-4

D.L. 337

Department of Mines and Petroleum Resources

LEGEND

- BARB WIRE FENCES xxxxx
- DIRT ROAD
- COMMON LEGAL POST
- MINERAL CLAIM BOUNDARY

DIRT ROAD THRO' DUSTY MAC MINES LTD

WIRE GATE

K Thompson
Mar 19, 1976

EVALUATION OF WORK DONE

FIGURE 4(b)

NOTE: TO OBTAIN CUBIC FOOTAGE OF V SHAPED PITS, & TRENCHES AVERAGE OF TOP AND BOTTOM WIDTH OBTAINED BY 1/2 OF TOP WIDTH.

AREA #	DIMENSION	Cubic Feet TOTAL	Cubic Feet		
			Rock	MIX.	DIRT.
#5	14	2 x 2 x 1	4	2	
	13	2 x 2 x 1	4	2	
	12	2 x 2 x 1	4	2	
#4	11	12 x 4 x 4	192		96
	10	4 x 4 x 2	32	16	
	9	6 x 6 x 3	108	54	
#3	8	16 x 4 x 7	448		224
	7	12 x 4 x 2	96	48	
	6	12 x 7 x 4	336		168
	5	11 x 8 x 5	440	220	
#2	4	9 x 7 x 7 2	220	110	
	3	11 x 3 x 4	132	66	
#1	2 A	2 x 2 x 1	4	2	
	2 B	2 x 4 x 1	8	4	
	1	12 x 2 x 3	72	36	
			562	392	96

CALCULATIONS

SOLID ROCK	562 cuft. @ 65¢	= \$365.30
MIXTURE (ROCK & DIRT)	392 cuft @ 40¢	= 156.80
DIRT	96 cuft @ 17¢	= 16.32
DRILL RENTAL		= 65.00
DYNAMITE CAPS ETC		= 30.00
TRACTOR RENTAL		= 50.00
TRANSPORTATION	4 Day @ \$300	= 1200
		\$695.42

5816

QUALIFICATION OF PROSPECTORS

Kenneth G. Ewers -

Prospecting, mining and leasing has been main source of income and livelihood since 1930. Original vendor on a number of Mining Companies listed on Vancouver Stock Exchange over the years including most recent of Dusty Mac Mines Ltd. (N.P.L.)

See "Lode Metals & Annual Reports" 1963,64, 67, 68

G.E.M. re Lynx Late M/C, 1969, 1970, 1971

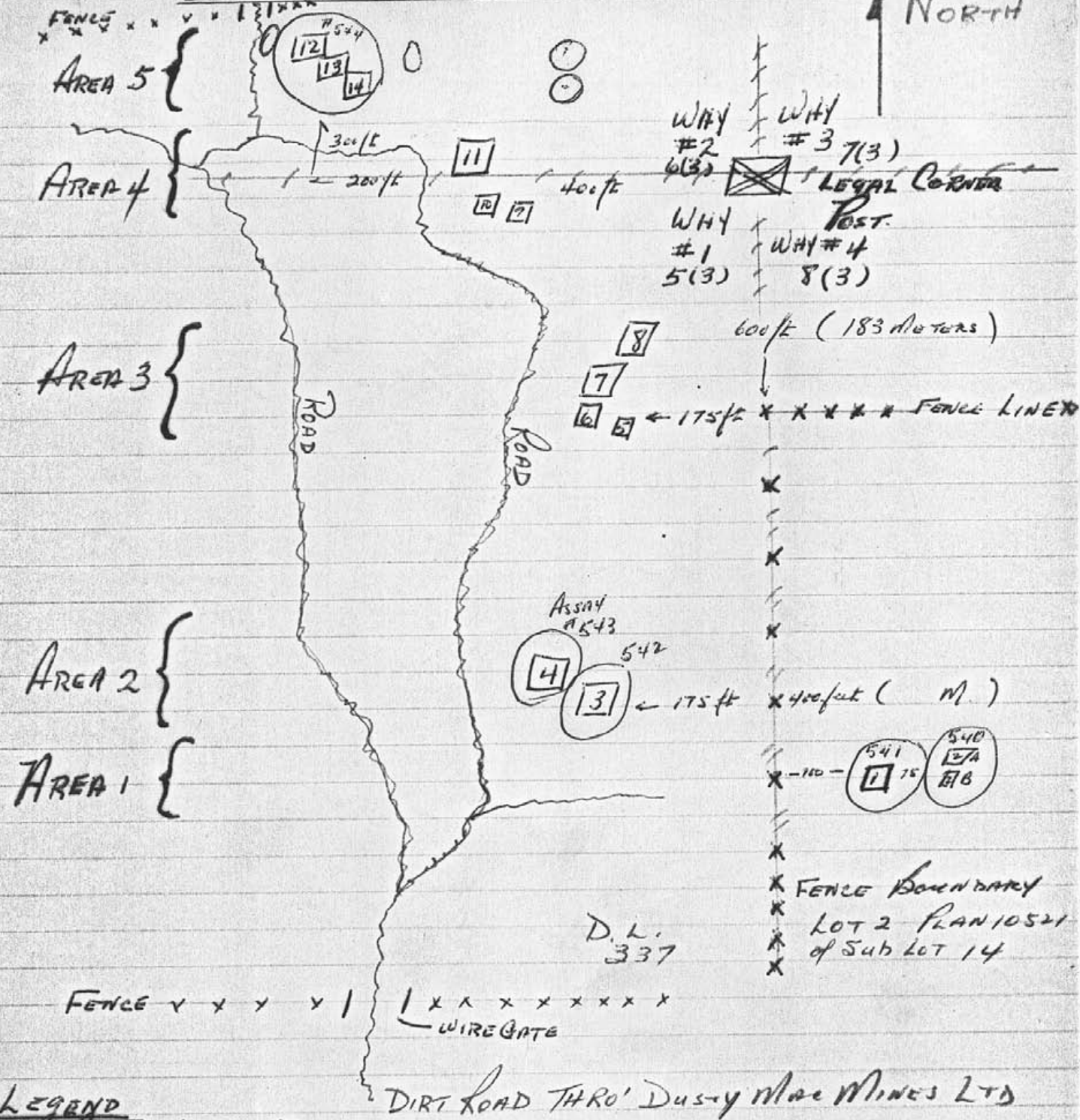
G.E.M. re Au-Rain M/c 1973, 1974

Kenneth G. Thompson -

Actively engaged in prospecting since early 1960's. One of original vendors of Dusty Mac Mines Ltd. (NPL.) See Annual Reports and G.E.M. 1973, 1974.

ASSAY SKETCH = O

FIGURE 5
↑ NORTH



LEGEND

- BARB WIRE FENCES xxxxx
- DIRT ROAD
- COMMON LEGAL POST [X]
- MINERAL CLAIM BOUNDARY +++++

5816 M-3

K. Thompson
March 19, 1976

Prospecting Report

Prospecting has been done by both owners and allocated as below on basis of \$6.00 per hour for average of 7 hours per day = \$42.00.

<u>Date - 1975 1976)</u>	<u>Ewers</u>	<u>Thompson</u>
April 6/75	1/2	1/2
Nov. 8/75	1/2	1/2
Nov. 12/75		1/2
Feb. 25/76	x	
Feb. 26/76	x	
Mar. 12/76	1/2	1/2
Mar. 14/76		1/2

TOTAL MAN DAYS = 6 @ \$42⁰⁰ = \$ 252⁰⁰
 TRANSPORTATION = 6 @ \$3⁰⁰ = 12⁰⁰
 # 264⁰⁰

ASSAY REPORT.

ASSAYS TAKEN DURING WORK PERIOD ARE BEING OR WERE PROCESSED BY; (1) B.C. DEPT. OF MINES, VICTORIA B.C.
 (2) GENERAL TESTING LABORATORIES, VANCOUVER B.C.

9 ROCK DRILL DUST AND CHIP SAMPLES HAVE BEEN TAKEN BUT RESULTS HAVE NOT BEEN RECEIVED AT DATE OF THIS REPORT.

CHIP SAMPLES NORMALLY TAKEN OVER FIVE (5) FEET OR MULTIPLES THERE OF ACROSS STRUCTURES AT APPROXIMATELY ONE POUND PER FOOT.

IT IS SUSPECTED THAT THE TYPE OF MINERALIZATION WILL BE SIMILAR TO THE DUSTY MAC MINES LTD PROPERTY TO IMMEDIATE SOUTH WHEREIN METAL VALUES CONSISTS OF MICRON SIZED PARTICLES RARELY DETECTABLE WITH A 10X OR 20X HAND LENSE.