

LINECUTTING REPORT

AU MINERAL CLAIMS

82L/6W

KAMLOOPS MINING DIVISION

WORK DONE IN 1976

#5863

PREPARED BY

**KERR, DAWSON & ASSOCIATES LTD.**

9 - 219 Victoria Street  
Kamloops, B.C.



5863

AMEX EXPLORATION SERVICES LTD

LINE CUTTING REPORT

ALL MINERAL CLAIMS

KAMLOOPS MINING DIVISION

WORK DONE IN 1976

Department of  
Mines and Petroleum Resources  
ASSESSMENT REPORT

NO. 5863 MAP X

# 1 INDEX MAP

# 2 SURVEY MAP

}

IN POCKET

# AMEX EXPLORATION SERVICES LTD.

A.A. (AB) ABLETT

Confidential Work



~~30341377211123~~ 376-0433

RES. 376-7490

~~204, 099 VICTORIA STREET~~

V2C 2B3

207-2985 Airport Drive

BOX 286  
KAMLOOPS, B.C.

May 30, 1976

Keda Resources (1973) Ltd. N.P.L.,  
Suite # 1, 219 Victoria St.,  
Kamloops, B.C.

Attention: Mr. J.M. Dawson

**KAMLOOPS**

**MAY 31 1976**

**MINING RECORDER**

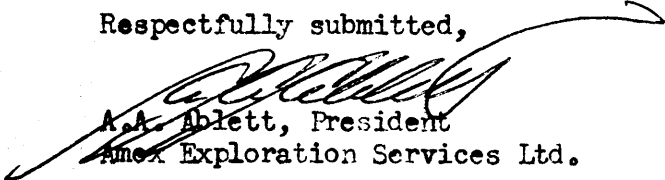
The following is a breakdown of our personnel engaged, and direct costs incurred during completion of 6.74 miles of grid preparation on your AU Group of mineral claims in the Kamloops Mining Division, approximately 19 kilometers northwest of Vernon, B.C. This program was completed during the period May 15 to May 28, 1976:

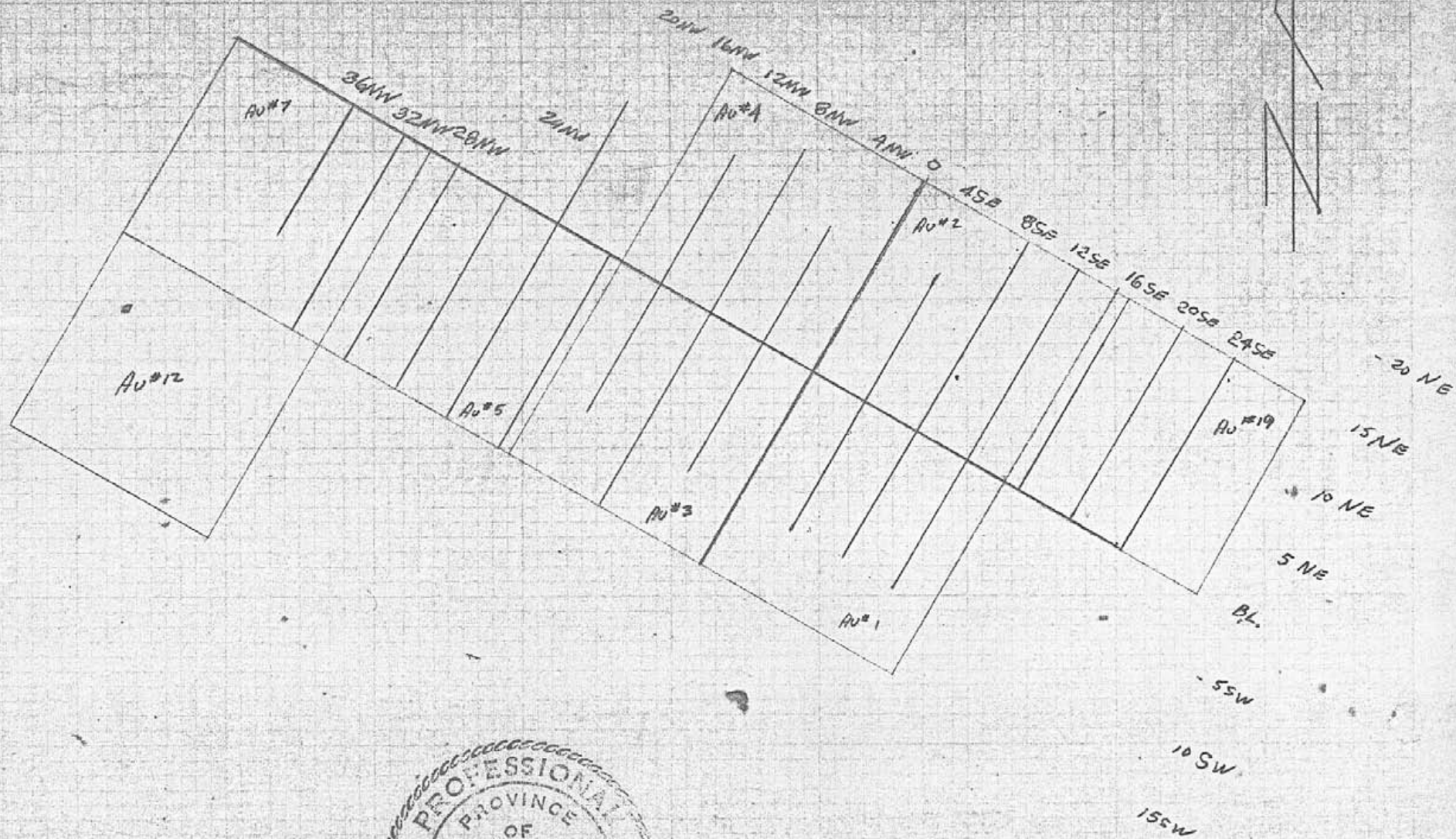
<u>Personnel Engaged</u>	<u>Time Expended</u>	<u>Wages</u>	
Larry N. Stephanishin	2 days	\$ 150.00	
Gordon R. Siemens	2 days	150.00	
Jim Davies	2 days	150.00	
Ed Lindquist	2 days	150.00	
		<u>\$ 600.00</u>	\$600.00

### Direct Costs

Board and accommodation 8 man-days @ \$ 16.50 per day	=	132.00
4 wheel drive Jeep Wagoneer 4 days @ \$ 35.00 per day		140.00
Miscellaneous supplies (flagging, pentels, etc.)		<u>17.35</u>
Total costs	=	<u>\$889.35</u>

Respectfully submitted,

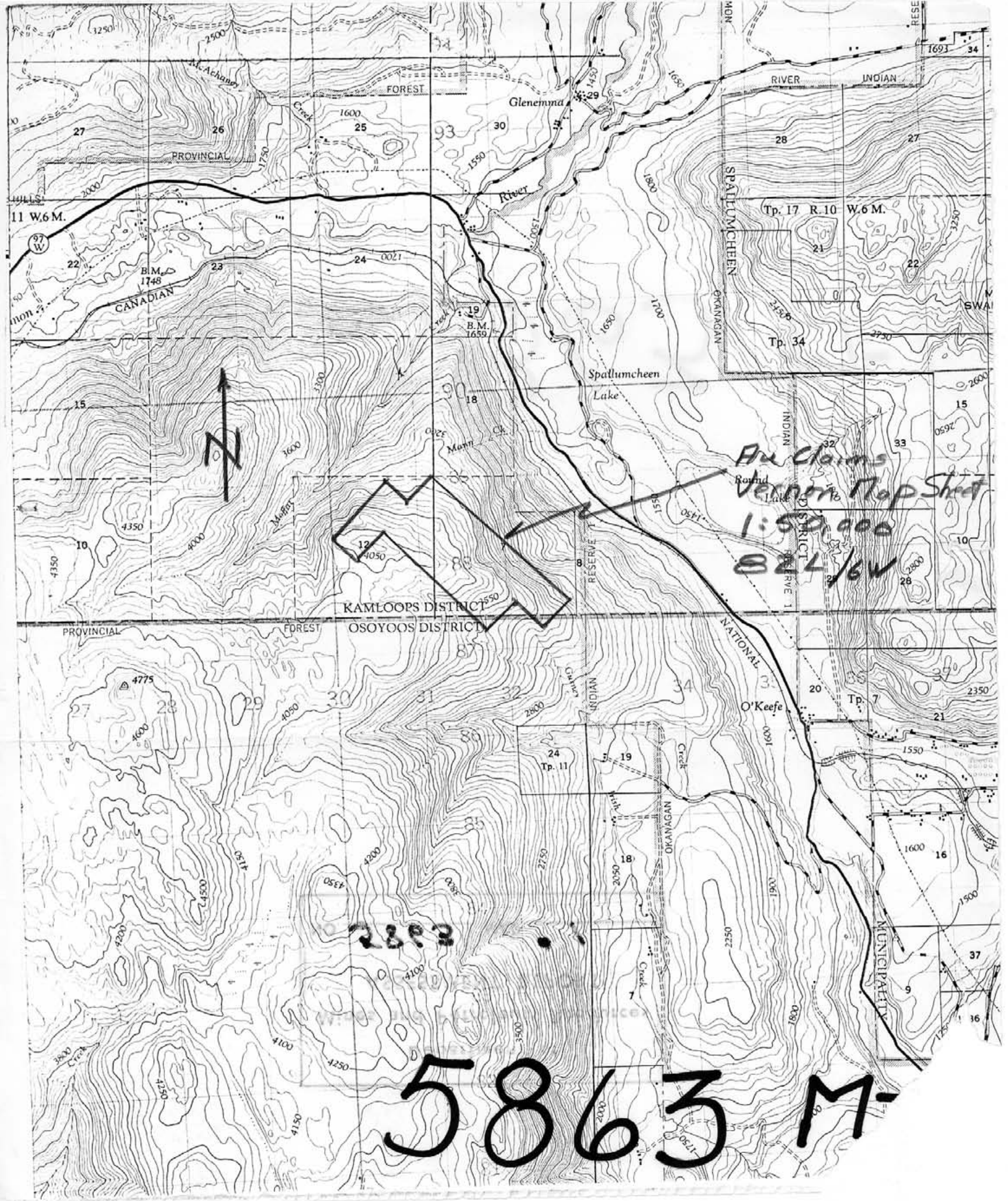
  
A.A. Ablett, President  
Amex Exploration Services Ltd.



SKETCH OF GRID  
 ON Au CLAIM GROUP

SCALE: 1:12,000



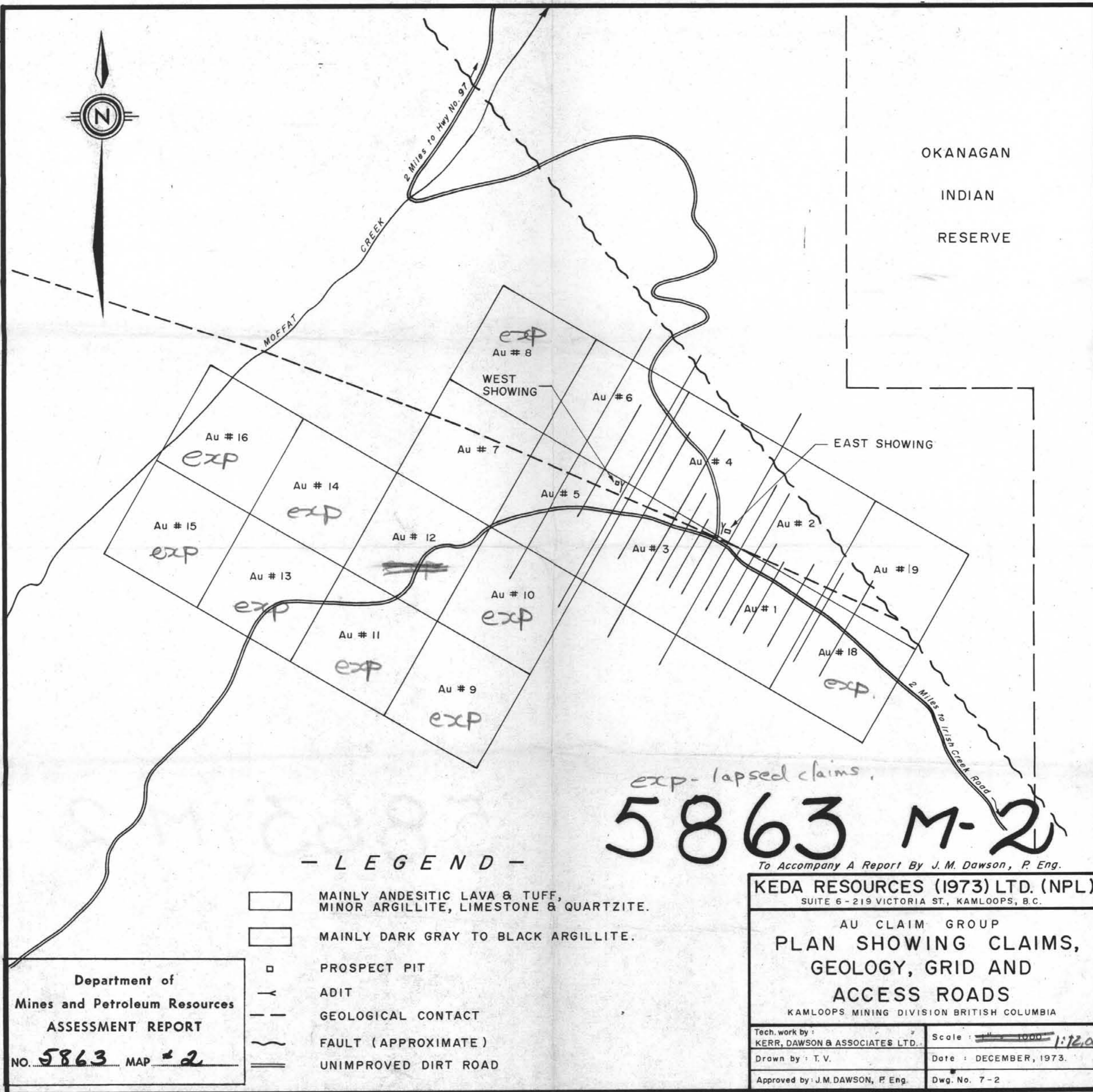


AN Claims  
Vernon Top Sheet  
1:50,000  
S24/6W

2893

5863 M.

OKANAGAN  
INDIAN  
RESERVE



— L E G E N D —

- MAINLY ANDESITIC LAVA & TUFF, MINOR ARGILLITE, LIMESTONE & QUARTZITE.
- MAINLY DARK GRAY TO BLACK ARGILLITE.
- PROSPECT PIT
- ADIT
- GEOLOGICAL CONTACT
- FAULT (APPROXIMATE)
- UNIMPROVED DIRT ROAD

Department of  
Mines and Petroleum Resources  
ASSESSMENT REPORT

NO. 5863 MAP # 2

exp - lapsed claims.  
**5863 M-2**

To Accompany A Report By J. M. Dawson, P. Eng.

**KEDA RESOURCES (1973) LTD. (NPL)**  
SUITE 6-219 VICTORIA ST., KAMLOOPS, B.C.

AU CLAIM GROUP  
**PLAN SHOWING CLAIMS,  
GEOLOGY, GRID AND  
ACCESS ROADS**

KAMLOOPS MINING DIVISION BRITISH COLUMBIA

Tech. work by:  
KERR, DAWSON & ASSOCIATES LTD.

Scale: ~~1" = 1000'~~ 1:12,000

Drawn by: T. V.

Date: DECEMBER, 1973.

Approved by: J.M. DAWSON, P. Eng.

Dwg. No. 7-2