

REPORT

DIAMOND DRILLING -

ROSS GROUP #2

FT. STEELE MINING DIVISION

*Claim location map*

5900

Department of  
Mines and Petroleum Resources  
ASSESSMENT REPORT  
NO. 5900 MAP.....

# Allen Geological Engineering Limited

601-325 HOWE STREET, VANCOUVER 1, B.C.

Office 682-5747 Residence 922-0227

July 10, 1976.

Mr. R. H. Stanfield  
Galloway, B.C.

Dear Sir:

Re: Cost Statement

"ROSS GROUP #2.

1.	Wescore Drilling Ltd., as per statement:	\$ 21,414.50
2.	R.H. Stanfield Churn Drilling, Overall costs including, preparation, truck, cat., and room and board, @ \$10.00 per foot:	\$ 2,580.00
3.	Allen Geological Engineering Ltd., as per statement:	\$ 500.00
4.	A.C. H.D.16 tractor, 24 hours @ \$35.00 per hour:	\$ 840.00
5.	Tractor operator, 32 hours @ \$5.00 per hour:	\$ 160.00
6.	Tractor swamper, 32 hours @ \$4.00 per hour:	\$ 128.00
7.	Room and board: Tractor operator, 4 days @ \$10.00 per day:	\$ 40.00
	Tractor swamper, 4 days @ \$10.00 per day:	\$ 40.00
	Two Diamond Drillers, 21 days @ \$20.00 per day:	\$ 420.00
		-----
		\$ 26,122.50

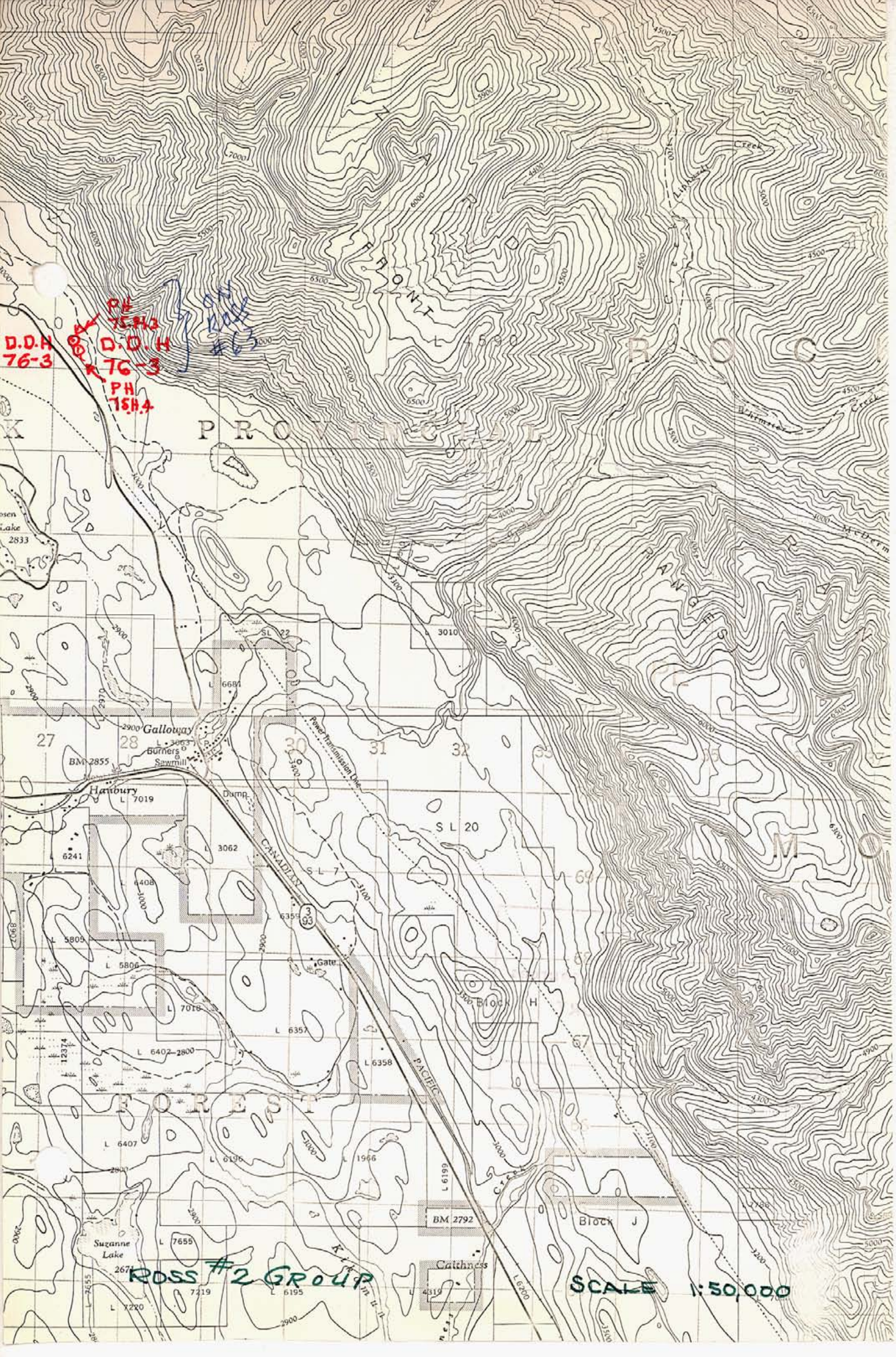
Yours very truly,

ALLEN GEOLOGICAL ENGINEERING LTD.

Per: Alfred R. Allen

ALFRED R. ALLEN





D.D.H  
76-3  
PH  
75H2  
D.D.H  
76-3  
PH  
75H4

PROVINCIAL FOREST

27

28

31

32

S L 20

S L 7

S L 93

Block H

69

67

M O

FOREST

BM 2792

Block J

ROSS #2 GROUP

SCALE 1:50,000

D.D.H  
76-3

D.D.H  
76-3

PH  
75H4

Handwritten blue scribbles and lines

Galloway

Burners Sawmill

Harbour

Damp

Gate

Block H

Suzanne Lake

Catkins

L 7220

L 7219

L 6195

L 4319

L 6241

L 3062

L 6408

L 5805

L 5806

L 7016

L 12374

L 6402-2800

L 6407

L 6196

L 1966

L 6199

L 6357

L 6358

L 2671

L 7220

L 7220

L 7220

L 7220

L 7220

L 7220

L 7220

L 7220

L 7220

L 7220

L 7220

L 7220

L 7220

L 7220

L 7220

L 7220

L 7220

L 7220

L 7220

L 7220

L 7220

L 7220

L 7220

L 7220

L 7220

L 7220

L 7220

L 7220

L 7220

L 7220

L 7220

L 7220

L 7220

L 7220

L 7220

L 7220

L 7220

L 7220

L 7220

L 7220

L 7220

L 7220

L 7220

L 7220

L 7220

L 7220

L 7220

L 7220

L 7220

L 7220

L 7220

L 7220

L 7220

L 7220

L 7220

L 7220

L 7220

L 7220

L 7220

L 7220

L 7220

L 7220

L 7220

L 7220

L 7220

L 7220

L 7220

L 7220

L 7220

L 7220

L 7220

L 7220

L 7220

L 7220

L 7220

L 7220

L 7220

L 7220

L 7220

L 7220

L 7220

L 7220

L 7220

L 7220

L 7220

L 7220

L 7220

L 7220

L 7220

L 7220

L 7220

L 7220

L 7220

L 7220

L 7220

L 7220

L 7220

L 7220

L 7220

L 7220

L 7220

L 7220

L 7220

L 7220

L 7220

L 7220

L 7220

L 7220

L 7220

L 7220

L 7220

L 7220

L 7220

L 7220

L 7220

L 7220

L 7220

L 7220

L 7220

L 7220

L 7220

L 7220

L 7220

L 7220

L 7220

L 7220

L 7220

L 7220

L 7220

L 7220

L 7220

L 7220

L 7220

L 7220

L 7220

L 7220

L 7220

L 7220

L 7220

L 7220

L 7220

L 7220

L 7220

L 7220

L 7220

L 7220

L 7220

L 7220

L 7220

L 7220

L 7220

L 7220

L 7220

L 7220

L 7220

L 7220

L 7220

L 7220

L 7220

L 7220

L 7220

L 7220

L 7220

L 7220

L 7220

L 7220

L 7220

L 7220

L 7220

L 7220

L 7220

L 7220

L 7220

L 7220

L 7220

L 7220

L 7220

L 7220

L 7220

L 7220

L 7220

L 7220

L 7220

L 7220

L 7220

L 7220

L 7220

L 7220

L 7220

L 7220

L 7220

L 7220

L 7220

L 7220

L 7220

L 7220

L 7220

L 7220

L 7220

L 7220

L 7220

L 7220

L 7220

L 7220

L 7220

L 7220

L 7220

L 7220

L 7220

L 7220

L 7220

L 7220

L 7220

L 7220

L 7220

L 7220

L 7220

L 7220

L 7220

L 7220

L 7220

L 7220

L 7220

L 7220

L 7220

L 7220

L 7220

L 7220

L 7220

L 7220

L 7220

L 7220

L 7220

L 7220

L 7220

L 7220

L 7220

L 7220

L 7220

L 7220

L 7220

L 7220

L 7220

L 7220

L 7220

L 7220

L 7220

L 7220

L 7220

L 7220

L 7220

L 7220

L 7220



CLAIM NO. **63****DIAMOND DRILL RECORD**PROPERTY **R. H. Stanfield**HOLE NO. **76-3****B.Q. Wireline**

LATITUDE .....

ELEVATION **2,900'**

BEARING .....

DEPTH **1967'**STARTED **May 1st. 1976**COMPLETED **May 28th. 1976**

DEPARTURE .....

SECTION .....

DIP **Vertical**DRILLED BY **Wescore Drilling Ltd.**LOGGED BY *W. H. Allen**P. Eng.*

DEPTH FEET	FORMATION	SAMPLE NO.	FROM	TO	WIDTH	ASSAYS			
0-16	Overburden								
16-42	Black argillite, fine grained and banded, flat, minor pyrite								
42-90	Black argillite, fine grained and banded pyrite and pyrrhotite								
90-422	Black argillite, fine grained and banded								
422-464	Black argillite, fine narrow diorite dykes								
464-492	Black argillite, minor pyrite and pyrrhotite								
492-659	Black argillite, minor pyrite and pyrrhotite								
659-730	Black argillite, minor pyrite and pyrrhotite								
730-758	Black argillite, several stringers of quartz-siderite, chalcopyrite, pyrite								
758-972	Black argillite, banded, dip steeper, pyrrhotite								
972-1075	Black argillite, slightly contorted, pyrite in blebs								
1075-1316	Black argillite, slightly contorted, pyrite and pyrrhotite								
1316-1601	Black argillite, pyrite and pyrrhotite stringer and disseminations								
1601-1675	Black argillite, pyrite and pyrrhotite								
1675-1700	Black argillite, quartz-siderite vein up to 3", pyrite, pyrrhotite, chalcopyrite								
1700-1750	Black argillite, quartz-siderite veins								
1750-1875	Black argillite, quartz-siderite veins, pyrite, pyrrhotite and sphalerite								
1875-1943	Light grey argillite, minor fracture								
1943-1967	Light grey argillite, contorted, pyrite								
	End of Hole								







# WESCORE DRILLING LTD.

BOX 760,  
INVERMERE, B.C.  
(604) 342-9932

CORE DRILLING  
SURFACE AND UNDERGROUND  
MINE AND EXPLORATION DRILLING  
DAM AND FOUNDATION TESTING

AGREEMENT ENTERED INTO THIS 11<sup>th</sup> DAY OF JUNE, 1975

BETWEEN:

R. H. Standfield,  
#2627  
125 - 9th Ave. S. E.,  
Calgary, Alberta

(hereinafter referred to as "the Company")

AND:

Wescore Drilling Ltd.,  
P. O. Box 760,  
Invermere, B. C.

(hereinafter referred to as "the Contractor")

WHEREAS the Company wishes to have performed certain surface diamond drilling on mining properties in the Galloway area of British Columbia, AND WHEREAS the Contractor in consideration of payments hereinafter contained, undertakes to do the said diamond drilling.

NOW THEREFORE THIS AGREEMENT WITNESSETH that the parties mutually covenant and agree as follows:

GUARANTEED FOOTAGE:

1. The Company guarantees a minimum of four Thousand (4,000) feet of surface diamond drilling in a series of holes to a maximum depth of Three Thousand (3,000) feet.
2. The Contractor guarantees to sink with standpipe and/or bore by diamond drill, the specified minimum footage, recovering NQ Wireline core approximately 1 7/8 inches in diameter, and BQ Wireline core approximately 1 7/16 inches, and to supply forthwith One (1) surface drill outfit along with the necessary associated equipment, industrial diamonds and labour, to complete the work specified by the Company at the following rates for drilling bedrock, for holes of a depth of up to Three Thousand (3,000) feet.

DRILLING RATES:

3. Footage Charges:

BQ

0 - 1000 feet	\$ 9.65 per foot
1000 - 1500 feet	10.65 per foot
1500 - 2000 feet	12.30 per foot
2000 - 2500 feet	13.10 per foot
2500 - 3000 feet	14.60 per foot

Member of the Canadian Diamond Drilling Association

NQ

0 - 500 feet	\$10.75 per foot
500 -1000 feet	11.75 per foot
1000 -1500 feet	12.65 per foot
1500 -2000 feet	13.50 per foot
2000 -2500 feet	14.60 per foot
2500 -3000 feet	15.70 per foot

The Contractor agrees that all its labour, diamond wear and loss, and all other operating expenses, except as hereinafter provided, shall be at its own cost and expenses and its own account.

Schedule of Rates for Casing in Overburden:

0 - 150 feet \$12.50 per foot

Casing of overburden greater than One Hundred and Fifty (150) feet will be charged to the Company at Field Cost, plus 10% from the collar of the hole.

FIELD COST:

- 4. It is agreed that Field Cost shall be interpreted here and hereinafter to mean all labour, at the rate of nine dollars and seventy cents (\$9.70) per man hour; pipe and casing lost or left in holes; diamond loss; materials and supplies consumed in the work; machine and equipment rental, Ten Dollars (\$10.00) per hour.

CAVES:

- 5. In the event that cavities or loose and caving materials are encountered of a nature as to prevent the successful completion of any hole, the Contractor does not, under such conditions guarantee to drill to a predetermined depth and, in the event that it becomes necessary to abandon the hole, the Company agrees to pay for the footage completed in such holes at the rate herein specified.  
In the event it becomes necessary to resort to cementing, wedging of the hole, reaming, casing, or mud circulation in bedrock or overburden, the Company agrees to reimburse the Contractor for such operations at field Cost, plus 10%.  
Wherever pipe or casing is lost, or is left in a hole on the instructions of the Company's Engineer, the Company agrees to pay the Contractor for such pipe or casing at prevailing market prices, f.o.b. drill site.  
The Company agrees to pay the Contractor the Cost of diamond set casing shoe bits in addition to the cost of any casing left in the hole.

TESTS:

- 6. The Contractor, when instructed to do so, shall take any Clinometer dip tests or other tests desired by the Company. The Contractor's charge for such tests shall be at field Cost.

WATER SUPPLY:

- 7. The Contractor agrees to supply, at its own expense, water up to a distance of Fifteen Hundred (1500) feet lateral and/or Two Hundred (200) feet vertical lift.



The Company will reimburse the Contractor at Field Cost the extra cost of supplying water to the drill in excess of those distances stated or for heating water.

TRANSPORTATION  
AND MOVES:

8. (a) It is agreed that the moving of the drill and equipment, supplies and personnel, from the Contractor's warehouse to the Initial drill site, and return from the final drill site to the Contractor's warehouse shall be charged to the Company at no charge.
- (b) It is agreed that when moves between drill sites cost in excess of thirty-two (32) man hours of labour, the Company will pay the Contractor at Field cost, plus 10% for such moves, after the cost of the first thirty-two (32) man hours.
- (c) Moving shall be interpreted to include tearing down, dismantling machinery, moving, securing timber, transportations, site preparation, laying waterlines and setting up.
- (d) It is understood and agreed that should tractors be used for moving, tractor rental shall be paid by the Company.
- (e) The Company agrees to provide access roads suitable for two wheel vehicle travel to the drill sites and agrees to cut and level drill sites in advance of the drilling operation, at no cost to the Contractor.

WAITING TIME  
FOR ORDERS:

9. It is understood and agreed that time lost waiting for orders from the Company's Resident Engineer, or Representative, shall be charged to the Company at Field Cost, plus 10%.

CORE:

10. The drilling shall be conducted so as to produce maximum core recovery with every reasonable precaution taken to prevent crushing, wearing, or grinding of core, All cores recovered by the Contractor shall be delivered to the Company at the drill site and carefully marked and placed in receptacles to be furnished by the Company.

SECURITY:

11. The Contractor will not give out any information regarding drill results or permit access to any drill core, to any person other than the Company's accredited representatives except upon specific permission of responsible officials of the Company.

DISCIPLINE:

12. The Contractor, shall at all times, enforce strict discipline and maintain good order among its employees, and shall not retain on the work any unfit person or anyone not skilled in the work assigned to him.
- Any employee of the Contractor, who is objectionable or unsatisfactory to the Company shall be removed from the work and replaced by an employee satisfactory to the Company.

INSURANCE:

13. THE CONTRACTOR shall maintain such insurance as will protect it from all claims and damage for personal injury, including death

resulting therefrom, and from claims for property damage arising from the operation under this Contract in an amount sufficient to release the Company of any liability in this respect. A certificate of such insurance coverage shall be delivered to the Company prior to commencement of the Contract.

THE CONTRACTOR shall be responsible for the payment of any assessments for Workmen's Compensation, Holiday Pay, Canada Pension, Unemployment Insurance, Sales Taxes, or other applicable charges relative to its own labour and supplies purchased.

POLLUTION:

- 14. During the course of the work, the Contractor shall at all times keep the Company's premises free from accumulation of waste material or rubbish and upon completion of the work, shall remove all tools, scaffolding, surplus materials and rubbish, and leave the premises in a clean condition. The Contractor shall observe and comply with all applicable Federal and Provincial laws, regulations and orders relating to the prevention of forest fires and sanitation in the bush.

MATERIALS:

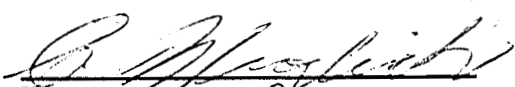
- 15. Any mud, cement, chemicals and soluble oils will be charged at cost plus 10%.


CAMP:

- 16. Company to supply camp and provide meals and lodging for the Contractor's crew at no charge to the Contractor.


PAYMENT OF WORK:

- 17. The Company agrees to pay the Contractor, in Canadian funds, the above prices. Invoices will be submitted twice monthly. The Company agrees to pay the above mentioned Invoices within Seven (7) days of the date account rendered. The Contractor will not be liable for minimum footages or any other terms of this agreement until payment is received for any outstanding invoices.
- 18. This agreement may be altered only by written consent of both parties hereto.
- 19. Time is of the essence in this Agreement.

  
Witness

  
Company

WESCORE DRILLING LIMITED

  
Witness

  
Contractor

TO

R. H. STANFIELD  
 Ste. # 260.,  
 355 - 4th. Avenue S.W.  
 CALGARY, Alberta.

INVOICE NUMBER  
**071**



BOX 760,  
 INVERMERE, B.C.  
 (604) 342-9932

PROJECT	P.O. NO.	TERMS NET	INVOICE DATE	
Galloway		7 days	May 8, 1976	
DETAILS		HOURS OR FOOTAGE	RATE	AMOUNT
Diamond Drilling				
Hole # 76-2				
Coring 273' - 350'		77'	9.65	743.05
Cementing & Drilling out Cement		12 hrs.	19.70	236.40
Hole # 76-3				
Drilling Overburden 0' - 16'		16'	12.50	200.00
Coring 16' - 710'		694'	9.65	6697.10
			<b>TOTAL.....</b>	<b>7876.55</b>
Minus				
20 gals. purple Gas @ 52.4 per gal				10.48
Helper - 64 hrs. @ 5.50 per hour				352.00
			<b>MINUS.....</b>	<b>362.48</b>
			<b>TOTAL \$</b>	<b>7514.07</b>

\$6897.10

CHK # 164  
 May 28/76  
 7,514.07

CORE DRILLING  
 SURFACE AND UNDERGROUND

MINE AND EXPLORATION DRILLING  
 DAM AND FOUNDATION TESTING

Member of the Canadian Diamond Drilling Association



TO

R. H. STANFIELD  
 Ste. # 260.,  
 355 - 4th. Avenue S.W.  
 CALGARY, Alberta.

INVOICE NUMBER

072



BOX 760,  
 INVERMERE, B.C.  
 (604) 342-9932

PROJECT	P.O. NO.	TERMS NET	INVOICE DATE	
Galloway		7 days	May 22, 1976	
DETAILS		HOURS OR FOOTAGE	RATE	AMOUNT
Diamond Drilling				
<u>Hole # 76-3</u>				
Coring	710' - 1000'	290'	9.65	2798.50
	1000' - 1500'	500'	10.65	5325.00
	1500' - 1660'	160'	12.30	1968.00
			TOTAL.....	<u>10091.50</u>
Minus				
90 gals. purple Diesel @ 51.5 per gal				46.35
20 gals. purple Gas @ 52.4 per gal				10.48
Helper - 86 hrs. @ 5.50 per hour				<u>473.00</u>
			MINUS.....	<u>529.83</u>
			TOTAL \$	9561.67

*CHEQUE # 174  
 JUNE 3/76.  
 \$9,561.67*

CORE DRILLING  
 SURFACE AND UNDERGROUND

MINE AND EXPLORATION DRILLING  
 DAM AND FOUNDATION TESTING

Member of the Canadian Diamond Drilling Association

TO

R. H. Stanfield,  
 Ste. # 260,  
 355 - 4th. Avenue S. W.  
 Calgary, Alberta.

INVOICE NUMBER

073



BOX 760,  
 INVERMERE, B.C.  
 (604) 342-9932

PROJECT	P.O. NO.	TERMS NET	INVOICE DATE	
Galloway		7 days	June 5, 1976	
DETAILS		HOURS OR FOOTAGE	RATE	AMOUNT
Diamond Drilling				
Moving - Longyear 44 and setting up on #76-3 and 25-A to 76-4 and setting up.		28 hrs.	19.70	551. 60
Hole # 76-3				
Coring BQ 1660' - 1967'		307'	12.30	3776. 10
4 dip tests		4 hrs.	19.70	78. 80
Dip test tubes and acid				20. 00
Hole # 76-4				
Casing Overburden 0' - 20'		20'	12.50	250. 00
Coring NQ 20' - 180'		160'	10.75	1720. 00
20' N Casing				205. 00
1 N Casing Shoe				287. 00
Cementing - Drilling out cement		3 hrs.	19.70	59. 10
			TOTAL.....	6947. 60
Minus				
Hebper - 60 hrs. @ 5.50 per hour				330. 00
90 gals. purple Disiel @ 51.5 per gal				46. 35
Vitaualic Couplings and fittings				123. 44
30 gals. purple Gas @ 52/4 per gal.				15. 72
			TOTAL \$	6432. 09

\$4,425.90

Cheque # 18.  
 JUNE 14/76.  
 \$ 6432.09

CORE DRILLING  
 SURFACE AND UNDERGROUND

MINE AND EXPLORATION DRILLING  
 DAM AND FOUNDATION TESTING

Member of the Canadian Diamond Drilling Association

# Allen Geological Engineering Limited

601-325 HOWE STREET, VANCOUVER 1, B.C.

Office 682-5747 Residence 922-0227

June 17th. 1976.

R. H. Stanfield,  
Ste. # 260.,  
355 - 4th. Avenue S.W.  
CALGARY, Alberta.

Re: Examination of  
Ross Group # 2

Fees:

\$500.00

*Allen R. Allen*



# Allen Geological Engineering Limited

601-325 HOWE STREET, VANCOUVER 1, B. C.

Office 682-5747 Residence 922-0227

July 10, 1976.

I, Alfred R. Allen, certify that:

I am a graduate of the University of British Columbia and hold the following degrees therefrom:

BASc Geological Engineering 1939

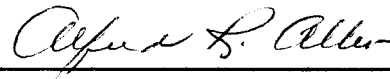
MASc Geological Engineering 1941

I am a member of the Association of Professional Engineers of the Province of British Columbia.

I have practised my profession as a consulting engineer for the past thirty years.

This report is based upon work on the property by the writer.

I hold no interest in the properties or securities of R. H. Stanfield or any of his companies or subsidiary, nor do I expect to receive any directly or indirectly.



---

ALFRED R. ALLEN