

5904

REPORT - CHURN DRILLING

LILLEA # 1 to # 4

FT. STEELE MINING DIVISION

HELD BY R. H. STANFIELD

#1 CLAIM LOCATION MAP

Department of  
Mines and Petroleum Resources  
ASSESSMENT REPORT

NO. 5904 MAP

July 10, 1976.

Mr. R. H. Stanfield  
Galloway, B.C.

Dear Sir:

Re: Cost Statement

"LILLEA # 1 TO # 4"  
-----

1. Special percussion Drill Hole

Hole diameter 4 inches

Assemble equipment in Calgary and transport to drill site on  
Lillea # 3 Claim.

Drill to depth of 115 feet.

Collect sampler every 3 feet and inspect same. \$ 1,150.00

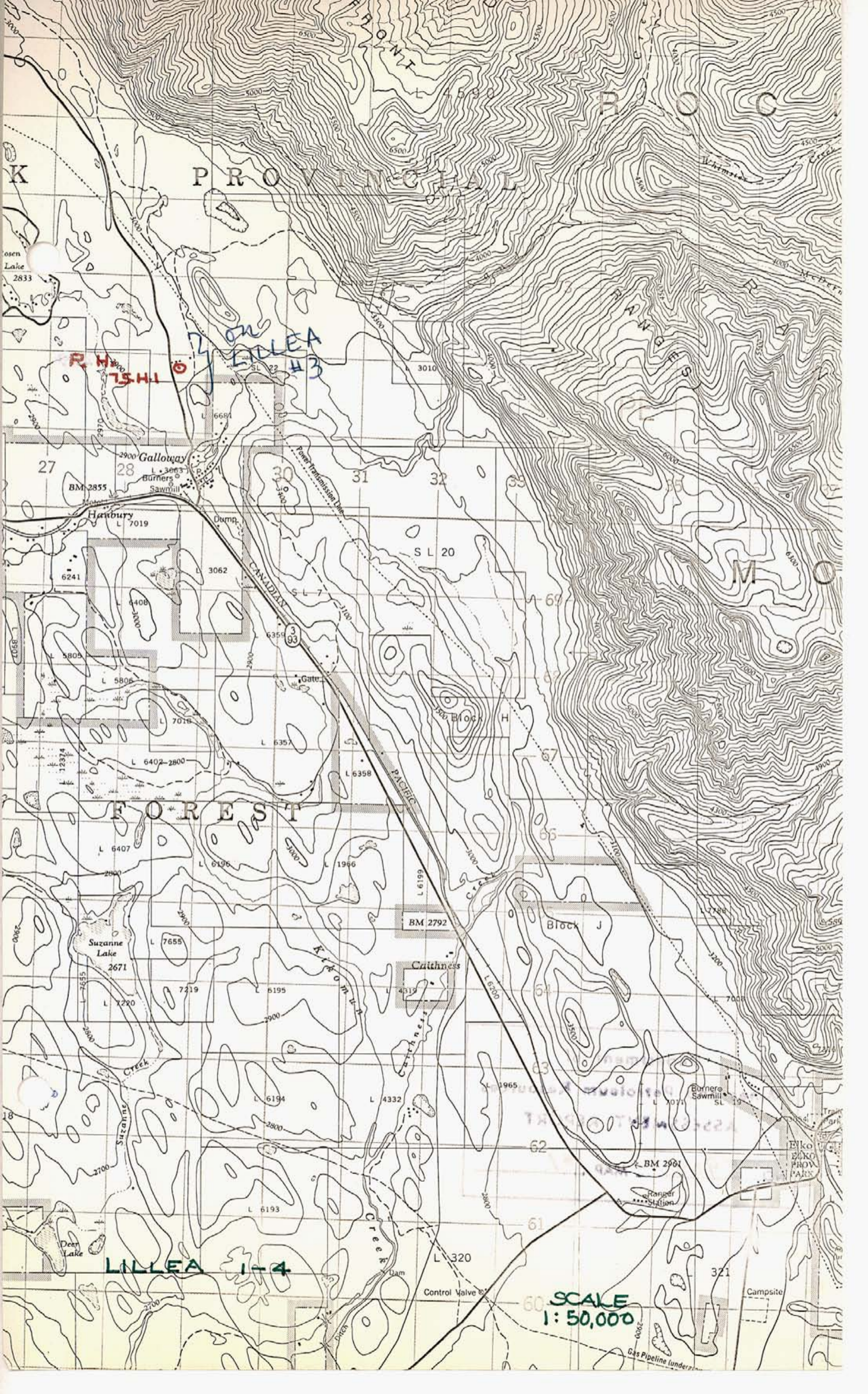
Yours very truly,

ALLEN GEOLOGICAL ENGINEERING LTD.

Per: \_\_\_\_\_

*Alfred R. Allen*

ALFRED R. ALLEN



PROVINCIAL

ELK RIVER

FOREST

LILLEA 1-4

LILLEA #3

R.H. 15H1

SCALE 1:50,000

Olsen Lake 2833

Galloway L 3063 Burners Sawmill

Harbury L 7019

Suzanne Lake 2671

BM 2792

BM 2901

Control Valve

Campsite

Gas Pipeline (under)

Burners Sawmill SL 19

Elko PROV. PARK

Crithness

Block J

Block H

Gate

Dump

S L 20

393

27

28

31

32

M O

18

63

64

65

66

67

68

69

70

71

72

73

74

75

76

77

78

79

80

81

82

83

84

85

86

87

88

89

90

91

92

93

94

95

96

97

98

99

100



# R. H. Stanfield

SUITE 260, THREE CALGARY PLACE  
355 - 4TH AVENUE S.W.  
CALGARY, ALBERTA  
T2P 0J1  
TELEPHONE (403) 269-5311

July 10, 1976.

To: R. H. Stanfield, Project,  
Galloway, B.C.

## Statement of Expenditures

on

LILLEA #1 TO #4, MINERAL CLAIM

To: Transportation, Labour and Equipment.

Length: 115'

Hole Diameter: 4"

Assemble equipment in Calgary and transport to  
drill site on Lillea # 3, and return to Calgary.

Collection of samples and inspection of same,  
every 3 feet.

Total costs on basis of \$10.00 per foot: \$1,150.00

  
R. H. STANFIELD  
Calgary, Alberta.

RHS/lhm

# Allen Geological Engineering Limited

601-325 HOWE STREET, VANCOUVER 1, B.C.

Office 682-5747 Residence 922-0227

**July 10, 1976.**

**I, Alfred R. Allen, certify that:**

**I am a graduate of the University of British Columbia and hold the following degrees therefrom:**

**BASc Geological Engineering 1939**

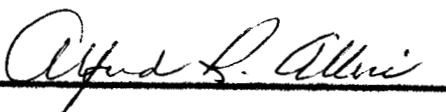
**MASc Geological Engineering 1941**

**I am a member of the Association of Professional Engineers of the Province of British Columbia.**

**I have practised my profession as a consulting engineer for the past thirty years.**

**This report is based upon work on the property by the writer.**

**I hold no interest in the properties or securities of R. H. Stanfield or any of his companies or subsidiary, nor do I expect to receive any directly or indirectly.**

  
**ALFRED R. ALLEN**