

5946

CANADIAN SUPERIOR EXPLORATION LIMITED

DIAMOND DRILLING REPORT
ON THE
RED PROPERTY

5946
July 20, 1976

Department of
Mines and Petroleum Resources
ASSESSMENT REPORT

NO. 5946 PART 2 OF 2

CANADIAN SUPERIOR EXPLORATION LIMITED

DIAMOND DRILLING REPORT

ON THE

RED PROPERTY

**LOCATION: On the Squingula River, 12 miles WNW
of Bear Lake, British Columbia**

Lat: 56°15' N Long: 127°12' W

CLAIM NAMES: Red

WORK PERIOD: June 5 - June 14, 1976

**J. Baker B.Sc.
Smithers, British Columbia
July 20, 1976**

TABLE OF CONTENTS

SUMMARY

COST STATEMENT

DRILL LOGS

ILLUSTRATIONS:

Location Map (1" = $\frac{1}{2}$ mile)

Drill Hole Plan (1" = 400') # 1

DRILL HOLE LOGS 1 to 9

SUMMARY

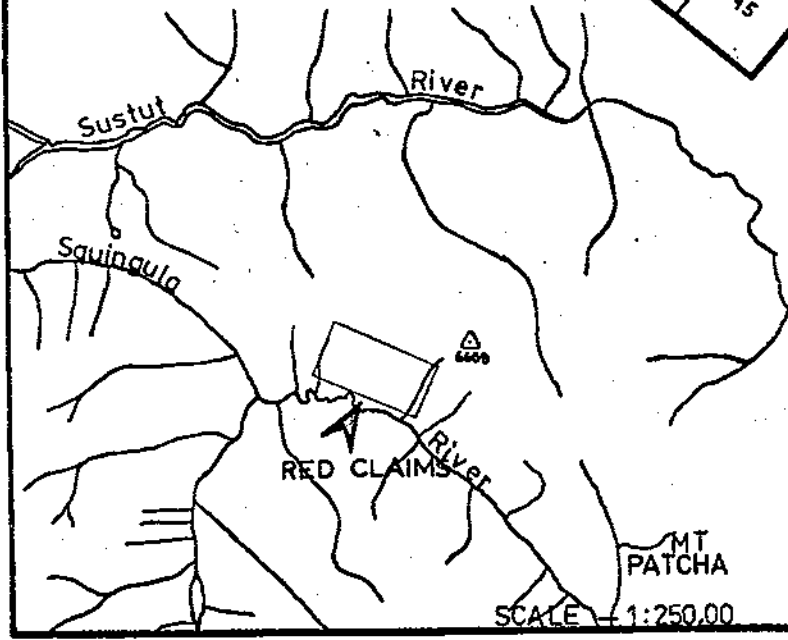
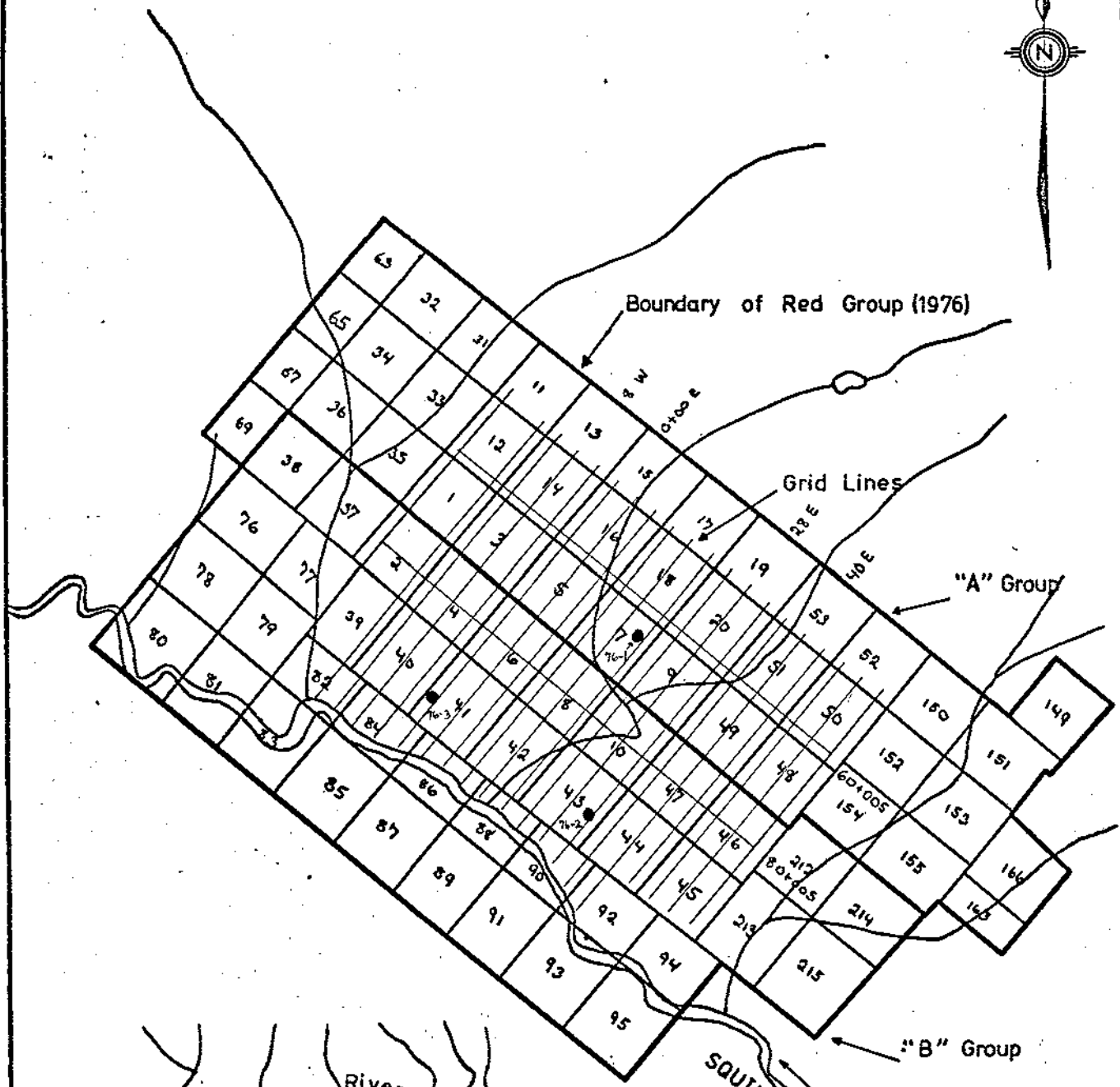
The Red copper prospect is situated on the Squingula River 12 miles WNW from the North end of Bear Lake and is wholly owned by Canadian Superior Exploration Limited.

The property consists of 80 Red claims covering a Jurassic volcanoclastic sequence deposited peripheral to a Toarcian volcanic center.

Chalcopyrite/chalcocite/bornite mineralization was first discovered in 1972 as disseminations within an intercalated impure bioclastic limestone and since that time comprehensive soil sampling, magnetometer surveys and geologic mapping have been carried out followed by a diamond drilling program involving 9 holes totalling 2972 feet. Subsequent IP survey and geological work in 1975 and 1976 outlined possible new areas of interest and these were tested with three diamond drill holes totalling 1156 feet in June of 1976. Results were generally negative.

Drilling in 1976 was contracted to J.T. Thomas Diamond Drilling of Smithers and supported by helicopters from Smithers.

Total cost of the drilling program was approximately \$45,000.



#5946

CANADIAN SUPERIOR EXPLORATION LIMITED
SMITHERS REGIONAL OFFICE

RED GROUP
NTS. 94 D/3

DRAUGHTSMAN: JB SCALE: 1" = 1/2 mi. DATE: MAY 1976

SCALE = 1:250,00

COST STATEMENT

In support of an Affidavit on Application to Record Work on the Red A & B groups of mineral claims, Omineca Mining Division.

Costs incurred in site preparation, diamond drilling, supervision core logging and drill moves by helicopter from June 5 - June 14, 76.

| | | |
|--|-------|-----------------|
| 1. Diamond Drilling: | | |
| 1156' @ \$14.00/ft. | | \$ 16,184.00 |
| J. T. Thomas Diamond Drilling Ltd. | | |
| Contractor | | |
| 2. Drillsite preparation: | | |
| Cost of explosives, and supplies | | 125.00 |
| J. Hemelspeck, blaster & faller | | 275.00 |
| 5 days @ \$55.00/day | | |
| N. Polysou Assistant | | 150.00 |
| 5 days @ \$30.00/day | | |
| 3. Project Management, supervision & core logging: | | |
| G. Stock geologist, 10 days @ \$50.00/day | | 500.00 |
| J. Baker, Exploration Manager Northern B.C. | | 180.00 |
| 3 days @ \$60.00/day | | |
| N. Polysou, core splitter | | 300.00 |
| 10 days @ \$30.00/day | | |
| 4. Helicopter support; | | |
| 12 hours @ \$315.00/hr. (Bell 206) | | <u>3,780.00</u> |
| | TOTAL | 21,494.00 |

CANADIAN SUPERIOR EXPLORATION LIMITED
DIAMOND DRILL RECORD

LOCATION: 62+50 S 19+60 E

1/4

HOLE No: 90-76-1

AZIMUTH: 215°

PROPERTY: Red Project (P-90)

DIP: -45° LENGTH: 500' ELEVATION: 3375' CLAIM No: _____

STARTED: June 6, 1976 CORE SIZE: BQ DATE LOGGED June 9, 1976 SECTION: _____

COMPLETED: June 8, 1976 DIP TESTS: - LOGGED BY: Geoff Stock

PURPOSE: Test N.E. Resistivity High and Corresponding Frequency Anomaly CONTRACTOR: J. T. THOMAS DIAMOND DRILLING CORE STORED AT: Red Property Camp
HOLE CASED? NEGATIVE CAVING PROBLEMS AT TOP. Condensed core @ Smithers CSE office.

| FOOTAGE | | ROCK TYPE | | | | | | | STRUCTURE | | | MINERALISATION | | | ASSAYS | | | | | | | | | | |
|---------|-----|---------------|-------------|---|-----------|--------|---------|--------------|------------|----------|---------|----------------|------|---|--------|-----------|------------|--------|----------|-------|----------|------|--------|--------|--|
| FROM | TO | COMPOSITION | COLOUR | TEXTURE | GRN. SIZE | MATRIX | FOSSILS | % ALTERATION | FRACT INT. | ATTITUDE | BEDDING | ATTITUDE | TYPE | % | MODE | GRN. SIZE | SAMPLE No. | LENGTH | INTERVAL | % REC | % Cu EST | % Cu | oz. Ag | oz. Au | |
| 0 | 66 | | | OVERBURDEN | | | | | | | | | | | | | | | | | | | | | |
| | | | | LEACHED CAP | | | To 117' | | | | | | | | | | | | | | | | | | |
| 66 | 86 | ANDS | Red | Volc | 2 | | | ∅ | 3 | | | | | | | | | | | | | | | | |
| | | | | Red hematized Andesite flow(?) | | | | | | | | | | | | | | | | | | | | | |
| | | | | underlying Arkose is relatively unaltered. Fragments are bleached, altered, and of varying sizes. Alt'n app → Rextol 1/2" of Ark frags. | | | | | | | | | | | | | | | | | | | | | |
| | | | | Calcite veining @ 30°-45° | | | | | | | | | | | | | | | | | | | | | |
| | | | | Limonite JA >> Hc | | | | | | | | | | | | | | | | | | | | | |
| 86 | 99 | Lithic Arkose | Redish-grey | Sed | 3-4 | | | ∅ | 3 | | | | | | | | | | | | | | | | |
| | | | | Redish-grey lithic Arkose containing Fe, Ca, chlorite, Red ANDS frags. | | | | | | | | | | | | | | | | | | | | | |
| | | | | graded bedding observed at 126' | | | | | | | | | | | | | | | | | | | | | |
| | | | | Limonite Rims on open fractures. JA >> Hem. Lower contact is obliterated. | | | | | | | | | | | | | | | | | | | | | |
| 99 | 140 | ANDS | Red | Volc | 2 | | | ∅ | 2 | | | | | | | | | | | | | | | | |
| | | | | Contains frags. of what appears to be Water Worked Tuff. | | | | | | | | | | | | | | | | | | | | | |
| | | | | 125.5-126.5: lge frag water worked tuff? kaolinitic alt'n adj. Flts. | | | | | | | | | | | | | | | | | | | | | |
| | | FLTS: | | 109 @ 144' orientation not obs'd ~ 30° // to major fracture dir'n others @ 60°-80°-0° | | | | | | | | | | | | | | | | | | | | | |
| | | | | 130-132 Arkose frag.; 136-136.5 Arkose frag. No Sulphides obs'd. | | | | | | | | | | | | | | | | | | | | | |
| 140 | 142 | Granitic FLt. | | with abundant Kaol. | | | | ∅ | 3-2 | 30-45° | | | | | | | | | | | | | | | |
| | | | | @ 45° | | | | | | | | | | | | | | | | | | | | | |
| 142 | 190 | ANDS | grn-grey | Volc | 2 | | | ∅ | 3-2 | 30-45° | | | | | | | | | | | | | | | |
| | | | | lower contact @ 26°, top is top. Obs'd bedding @ 30°, larger faulted frag of Arkose @ 147'. FLT @ 161' | | | | | | | | | | | | | | | | | | | | | |

* 5946

CANADIAN SUPERIOR EXPLORATION LIMITED
DIAMOND DRILL RECORD

LOCATION: _____

3/4

HOLE No: 90-76-1

AZIMUTH: _____

PROPERTY: _____

DIP: _____ LENGTH: _____ ELEVATION: _____ CLAIM No: _____

STARTED: _____ CORE SIZE: _____ DATE LOGGED _____ SECTION: _____

COMPLETED: _____ DIP TESTS: _____ LOGGED BY: _____

PURPOSE: _____ CONTRACTOR: _____ CORE STORED AT: _____
HOLE CASED? _____

| FOOTAGE | | ROCK TYPE | | | | | | | STRUCTURE | | | MINERALISATION | | | ASSAYS | | | | | | | | | |
|---------|-----|---------------------|--------------------|---------|-----------|--|-------------------------------|--------------|-------------|----------|----------|----------------|------|---|--------|-----------|------------|--------|----------|-------|-----------|------|--------|--------|
| FROM | TO | COMPOSITION | COLOUR | TEXTURE | GRN. SIZE | MATRIX | FOSSILS | % ALTERATION | FRACT. INT. | ATTITUDE | BEDDING | ATTITUDE | TYPE | % | MODE | GRN. SIZE | SAMPLE No. | LENGTH | INTERVAL | % REC | % Cu EST. | % Cu | oz. Ag | oz. Au |
| 215.5 | 225 | RED-Hematitic ANDS. | Red | fine | 2-5 | Qz frags, | Carbonaceous-Chloritic frags, | ess. ϕ | Q-1 | 60-45° | | | | | | | | | | | | | | |
| | | | | Volc | | | | | | | | | | | | | | | | | | | | |
| | | | | | | Qz and some FP veinlets | | | | | | | | | | | | | | | | | | |
| | | | | | | contact @ 225' | | | | | | | | | | | | | | | | | | |
| | | | | | | | | | | | | | | | | | | | | | | | | |
| 225 | 267 | ANDS/SST/SLST | Red-Grn to Red-grn | | 2-5 | | | ess. ϕ | Sil'n | Q-3 | 45-30-80 | 30-35° | | | NONE | | | | | | | | | |
| | | | | | | minor Calcite, assoc. with Q/Fp veinlets, locally becoming highly shattered as result of faulting | | | | | | | | | | | | | | | | | | |
| | | | | | | Rounded to Sub Rounded frags of each in each. Locally some are sub-angular. | | | | | | | | | | | | | | | | | | |
| | | | | | | locally bleached app'ly due to weak to med sil'n. Green units app'ly ch'd. | | | | | | | | | | | | | | | | | | |
| | | FLT/BRX | | | | 239-240' 241' infilled with Qz/Fp narrow 1"-2" | | | | | | | | | | | | | | | | | | |
| 267 | 346 | SLST/SST | Red-Grn to dk grn | | | | | ess. ϕ | 1-5 | 30-45-60 | | ~30° | | | NONE | | | | | | | | | |
| | | | | | | Contact app // to bedding @ 30°. Incr. in Carbon by colour & also app'ly Sub ang. to Sup rounded Carb. frags. | | | | | | | | | | | | | | | | | | |
| | | | | | | alternating bands of SLST & SST from 1/2" to 10-20" feet. Some Calcite along shears but primarily Qz/Cal (Qz > Cal) | | | | | | | | | | | | | | | | | | |
| | | | | | | Bands becoming thicker down hole with C.g. material at bottom | | | | | | | | | | | | | | | | | | |
| | | | | | | Hm'd band @ 284', weakly magnetic locally in C.g. sections. | | | | | | | | | | | | | | | | | | |
| | | | | | | @ 330' bedding @ 25-30° frag. ch'd & lithic Red ANDS frag as well as discrete Qz Fp & ch'd. | | | | | | | | | | | | | | | | | | |
| | | | | | | Shear @ 331' @ 30° 1.5' of v.c.g. SST. with increasing gr. size with depth @ 30° with high % ANDS FRAGS - GRADED! | | | | | | | | | | | | | | | | | | |
| | | | | | | becoming increasingly Carbonaceous @ 337' toward graphitic shears @ 340' w/ Kdol in SLST. | | | | | | | | | | | | | | | | | | |
| | | | | | | becoming lighter green c.g. rounded frag. obs'd. locally graphitic @ 30° ungraded, unsorted, from silt size to 15mm. | | | | | | | | | | | | | | | | | | |
| | | | | | | lower contact somewhat diffuse, possibly erosion continuing but source material changing over 1 foot. | | | | | | | | | | | | | | | | | | |
| 346 | 375 | | Red. | Sed. | 2-5 | | | ess. ϕ | 1-5 | 30-45-80 | | 30° | | | NONE | | | | | | | | | *5946 |
| | | | | | | Same sequence as above but with Hem'd ANDS Calc + Qz/Cal + on veinlets. | | | | | | | | | | | | | | | | | | |

CANADIAN SUPERIOR EXPLORATION LIMITED
DIAMOND DRILL RECORD

LOCATION: _____
AZIMUTH: _____

4/4 HOLE No: 90-76-1
PROPERTY: _____

DIP: _____ LENGTH: _____ ELEVATION: _____ CLAIM No: _____
STARTED: _____ CORE SIZE: _____ DATE LOGGED: _____ SECTION: _____
COMPLETED: _____ DIP TESTS: _____ LOGGED BY: _____
PURPOSE: _____ CONTRACTOR: _____ CORE STORED AT: _____
HOLE CASED? _____

| FOOTAGE | | ROCK TYPE | | | | | | | | STRUCTURE | | | MINERALISATION | | | ASSAYS | | | | | | | | | |
|--|-----|-------------|------------------|---------|-----------|--------|---------|--------------|-------------|-------------|---------|----------|----------------|-----|--------------------------------------|-----------|------------|--------|----------|-------|----------|--------------|--------|--------|-----|
| FROM | TO | COMPOSITION | COLOUR | TEXTURE | GRN. SIZE | MATRIX | FOSSILS | % ALTERATION | FRACT. INT. | ATTITUDE | BEDDING | ATTITUDE | TYPE | % | MODE | GRN. SIZE | SAMPLE No. | LENGTH | INTERVAL | % REC | % Cu EST | % Cu | ox. Ag | ox. Au | |
| 375 | 385 | SLST/SST | Red-brn | Sed | 1-4 | | | | Ø-3 | 30-45-40 | ~40° | | NONE | | | | | | | | | | | | |
| contact distinct @ 45° but fuzzy apply with some alt'n. around it. developing graphitic laminations with depth. green may be an alteration product! (check specimens) Bluish hue to chlorite. | | | | | | | | | | | | | | | | | | | | | | | | | |
| 385 | 416 | Carb SL/SST | Grey-blk | Sed | 1-4 | | | | Ø | 30-RAN | ~30° | | Cpy | 6.8 | diss'd on shears & as veinlets alt'n | | | | | | | | | | .26 |
| exhibiting black laminations of carbonaceous or graphitic material between layers of SLST & SST bedding typically @ 30° but exhibiting convolutions typical of slump structures locally. Development of gouge between 391 & 396. Spotty calcite present here. Qtz/cal veinlets commonly @ 45° Also see step slump structures locally. | | | | | | | | | | | | | | | | | | | | | | | | | |
| 416 | 500 | SLST/SDST | Red Lt. gr. grn. | Sed | 1-4 | | | | Ø-5 | 45-30-60-60 | ~30-40° | | Ry | | 01 vein with Cal. | | | | | | | | | | |
| alternating light green to green to red ANDESITIC Silt to Sandstones with contacts as per sample 425 containing Carbonaceous, Chloritic, (blue hue) & Qtz frags. Qtz & Qtz/cal veining. becoming Carbonaceous or Graphitic locally | | | | | | | | | | | | | | | | | | | | | | | | | |
| 467.8 | 496 | FLT-BRA | | | | | | | | | | | | | | | | | | | | | | | |
| | | | | | | | | | | | | | | | | | | | | | | #5946 | | | |

CANADIAN SUPERIOR EXPLORATION LIMITED
DIAMOND DRILL RECORD

LOCATION: 90+00 S.
31+70 E.
AZIMUTH: 0°

1/3 HOLE No: 90-76-2
PROPERTY: RED. PROJECT (P-90)

DIP: Vertical LENGTH: 400' ELEVATION: CLAIM No:

STARTED: June 9, 1976 CORE SIZE: BQ DATE LOGGED: June 14, 1976 SECTION:

COMPLETED: June 11, 1976 DIP TESTS: - LOGGED BY: G. STOCK

PURPOSE: To test Southeast I.P. anomaly CONTRACTOR: J.T. THOMAS DIAMOND DRILLING CORE STORED AT: RED CAMP
HOLE CASED? No. CONDENSED CORE @ SMITHERS CSE OFFICE.

| FOOTAGE | | ROCK TYPE | | | | | | | | STRUCTURE | | | MINERALISATION | | | | ASSAYS | | | | | | | | |
|---------|------|-------------------------|---|---------|-----------|--------|-----------------------|--------------|------------|-----------|---------|----------|----------------|---|------|-----------|------------|--------|----------|-------|----------|------|--------|--------|--|
| FROM | TO | COMPOSITION | COLOR | TEXTURE | GRN. SIZE | MATRIX | FOSSILS | % ALTERATION | FRACT INT. | ATTITUDE | BEDDING | ATTITUDE | TYPE | % | MODE | GRN. SIZE | SAMPLE No. | LENGTH | INTERVAL | % REC | % Cu EST | % Cu | oz. Ag | oz. Au | |
| 0 | 22 | | Overburden | | | | | | | | | | | | | | | | | | | | | | |
| 22 | 51 | | Leached Cap. | | | | weakly leached to 51' | | | | | | | | | | | | | | | | | | |
| 22 | 22.5 | ARKOSE | red-grey Sed. | | | | | | | | | | | | | | | | | | | | | | |
| | | | m-cg poorly sorted leached lithic Arkose frags are subrounded to rounded. No sulphides. Contact impossible to see. | | | | | | | | | | | | | | | | | | | | | | |
| | | f.g. Red lithic, Arkose | Red. Sed/wd. | | 2-3 | | | | 3-4 | 30-45 | ~45° | | No Sulphides | | | | | | | | | | | | |
| | | | f-m grained red sandstone containing some well rounded coarser fragments of Hematitic tuff and carbonaceous frags. Uniformly sorted and exhibiting no bedding. Irregular gradation into siltstone locally. Waterlain or submarine tuff. No shards visible. Inferred bedding apply @ 45° @ 36' inferred small 1" fault Brx @ 35° Bedding @ 20° @ 42', minor slump textures below contact. Becoming coarser grained @ 45.5' contact not well defined and back to SLST @ 47.5', contact @ 35° and c.g. @ 50' no attitude @ contact. @ 52' back to SLST & contact @ 25-28° well sorted but no grading evident. becoming shattered and bleached with Cal. Qz. & Chl. along fractures. Possible fault @ 45° Excellent, well sorted sandy siltstone 1" thick @ 20° and 60.5 slight grading apply tops are tops. Rock shattered from 67-75.5' with fault @ 45° and 79'. 4" gouge on fault @ 84.5' becoming mottled-spottier??? B.k essentially the same frags slightly more Angular-Sub Angular-Sub Rounded. Grading to coarser & coarser frags. from 95.5-100'. Contacts obliterated. gradational largest rounded frags 4mm Weak bedding @ 103' @ 45° colour change @ 101-102.5' becomes med. grey. Mottling app. from 105-109' Small 1" graphitic fault zone @ 123' and 65°. Rock which till now has been SLST exhibits increasing gr. size becoming mottled 125-127' f.g. red, lithic Arkosic SST 127-134 when it becomes finer grained. Some m.g. Ark. frags obs'd rounded as well. 143-145.5' black limy zone contacts are irregular & diffuse ~60° minor py. assoc. & trace cpy. again 146.5-148.5' with py. 152-157' trace cpy. mixed 158.5-159.3' | | | | | | | | | | | | | | | | | | | | | | |

#5946

CANADIAN SUPERIOR EXPLORATION LIMITED
DIAMOND DRILL RECORD

LOCATION: _____

2/3

HOLE No: 90-76-2

AZIMUTH: _____

PROPERTY: _____

DIP: _____ LENGTH: _____ ELEVATION: _____ CLAIM No: _____

STARTED: _____ CORE SIZE: _____ DATE LOGGED _____ SECTION: _____

COMPLETED: _____ DIP TESTS: _____ LOGGED BY: _____

PURPOSE: _____ CONTRACTOR: _____ HOLE CASED? _____ CORE STORED AT: _____

| FOOTAGE | | ROCK TYPE | | | | | | | | STRUCTURE | | | MINERALISATION | | | | ASSAYS | | | | | | | | |
|---------|----|---|--------|---------|-----------|--------|---------|---|--------------|------------|---------|---------|----------------|------|---|------|-----------|------------|--------|----------|-------|----------|------|--------|--------|
| FROM | TO | COMPOSITION | COLOUR | TEXTURE | GRN. SIZE | MATRIX | FOSSILS | % | ALTER-ACTION | FRACT INT. | ATITUDE | BEDDING | ATTITUDE | TYPE | % | MODE | GRN. SIZE | SAMPLE No. | LENGTH | INTERVAL | % REC | % Cu EST | % Cu | oz. Ag | oz. Au |
| 159.3 | | Lithic Arkose | | | | | | | | | | | | | | | | | | | | | | | |
| | | rock becoming shattered & bleached locally and then developing mottled texture @ 164-165 @ 50° as before. | | | | | | | | | | | | | | | | | | | | | | | |
| | | Contact SLST & SST @ 20° no grading @ 186.5' | | | | | | | | | | | | | | | | | | | | | | | |
| | | @ 188' bedding @ 35° mottled texture @ 190.5'-194' | | | | | | | | | | | | | | | | | | | | | | | |
| | | fracturing and shattering with some bleaching envelopes sil'n 196-197' | | | | | | | | | | | | | | | | | | | | | | | |
| | | becoming irregular (see condensed core) mottled @ 213-214' | | | | | | | | | | | | | | | | | | | | | | | |
| | | appears to have changed to a true tuff with fp. lath now evident as of 188' | | | | | | | | | | | | | | | | | | | | | | | |
| | | lithic frags becoming angular to sub angular | | | | | | | | | | | | | | | | | | | | | | | |
| | | @ 250' getting bleached zone to 251' clay alt'n? | | | | | | | | | | | | | | | | | | | | | | | |
| | | 259.5' contact @ 55° between red & blk lower contact mixed @ 261' approx. | | | | | | | | | | | | | | | | | | | | | | | |
| | | seemingly horizontal contact between red and darker red. | | | | | | | | | | | | | | | | | | | | | | | |
| | | Blk again 266.5 and 269.5. | | | | | | | | | | | | | | | | | | | | | | | |
| | | FLT @ 271' oriented 45° shattered above 1' & app'ly sil'd to 273' graphite @ 271.5 and 272.5' | | | | | | | | | | | | | | | | | | | | | | | |
| | | FLT @ 276' 2' wide orientation obl'd. | | | | | | | | | | | | | | | | | | | | | | | |
| | | 28' appear to back into sediments with good bedding evident @ 45° grading not evident. | | | | | | | | | | | | | | | | | | | | | | | |
| | | 282' shear with kaolin @ 20° and 28.5' | | | | | | | | | | | | | | | | | | | | | | | |
| | | alt'ing SLST & SST 1'-3' | | | | | | | | | | | | | | | | | | | | | | | |
| | | @ 297' bedding; slightly grading top to bed @ 30° | | | | | | | | | | | | | | | | | | | | | | | |
| | | 302' FLT with QZ x'tals on open fractures. | | | | | | | | | | | | | | | | | | | | | | | |
| | | Developing? texture - See condensed log @ 303' bedding att ~35° large clasts 3-4 inches Arkose rounded. | | | | | | | | | | | | | | | | | | | | | | | |
| | | becoming irreg grey in SST between 314.5-317.5' | | | | | | | | | | | | | | | | | | | | | | | |
| | | 319'-327' becoming mottled | | | | | | | | | | | | | | | | | | | | | | | |
| | | Chlorite & talc on fractures common, possibly with kaolin. | | | | | | | | | | | | | | | | | | | | | | | |
| | | frags becoming Ang-Sub Ang @ 350' bedding app. @ 15° | | | | | | | | | | | | | | | | | | | | | | | |
| | | becoming mottled 357-360' | | | | | | | | | | | | | | | | | | | | | | | |
| | | 363' faults @ 60° & 45° w/ kaolin altered locally becoming greenish & buff nearby chl'd? & clay alt'n? | | | | | | | | | | | | | | | | | | | | | | | |

25946

CANADIAN SUPERIOR EXPLORATION LIMITED
DIAMOND DRILL RECORD

LOCATION: 91+355
0+25 W
AZIMUTH: 234° Az

1/2 HOLE No: 90-76-3
PROPERTY: RED PROJECT (P-90)

DIP: -45° LENGTH: 256' ELEVATION: _____ CLAIM No: _____
STARTED: June 15 1976 CORE SIZE: BQ DATE LOGGED June 19, 1976 SECTION: _____
COMPLETED: June 16 1976 DIP TESTS: — LOGGED BY: G. STOCK

PURPOSE: TO TEST SW COINCIDENT IP RESISTIVITY & FREQUENCY EFFECT ANOMALIES CONTRACTOR: J.T. THOMAS DRILLING CORE STORED AT: RED PROPERTY CONDENSED @ C.S.E. OFFICE (SMITHERS) CORE

| FOOTAGE | | ROCK TYPE | | | | | | | | STRUCTURE | | | | MINERALISATION | | | | ASSAYS | | | | | | | | |
|---------|----|---|--------|---------|-----------|--------|---------|---|------------|-------------|----------|---------|----------|----------------|---|------|-----------|------------|--------|----------|-------|-----------|------|--------|--------|--|
| FROM | TO | COMPOSITION | COLOUR | TEXTURE | GRN. SIZE | MATRIX | FOSSILS | % | ALTERATION | FRACT. INT. | ATTITUDE | BEDDING | ATTITUDE | TYPE | % | MODE | GRN. SIZE | SAMPLE No. | LENGTH | INTERVAL | % REC | % Cu EST. | % Cu | oz. Ag | oz. Au | |
| 0 | 70 | OVER BURDEN NO LEACHED CAP EVIDENT | | | | | | | | | | | | | | | | | | | | | | | | |
| 70 | 87 | CALCAREOUS ARKOSE grn-grey silt Sed 3-6 Calc - - ϕ 1-5 60-45, 30 - 20 poorly sorted locally w fragments of L.S. as per 76-77', 83'-84' frags from 1' to 1/4" (elongate locally) Bedding not evident lower contact @ 45° possibly a shear probably a fault 3" fault gouge @ 73' (no att.) | | | | | | | | | | | | | | | | | | | | | | | | |
| 87 | | Mixed graphitic calcareous silt & sandstones highly fragmental 87-91 due to fault. Imp. features to 91 are abundant 3-4% well rounded to sub angular Pyrite clasts f.g. to m.g. abundant Calcite veining, no bedding thus far. grey-blk Sed 2-5 ϕ-1 60-30-45 ~10-20° Py 3-4 Cpy T @ 93' SST @ 10° bedding w SST pyrite rounded to sub-Ang. Clasts as per specimen, large Qz/Cal. @ 98', 3' wide Pyrite does not appear to favour calcareous or non-calcareous portions Sulphide rich sed? developing around 102' We may be drilling down contact of unmin'd L.S. & Epiclastics. Faults @ 101' ~ 80° 103' ~ 35° 104' ~ 20° 106' ~ ? 117' ~ ? Step Slumping 119-121 @ 10° Rock blacker & less calcareous from 117'. More Sed. structures evident, increase in Graphite. | | | | | | | | | | | | | | | | | | | | | | | | |

#5946

CANADIAN SUPERIOR EXPLORATION LIMITED
DIAMOND DRILL RECORD

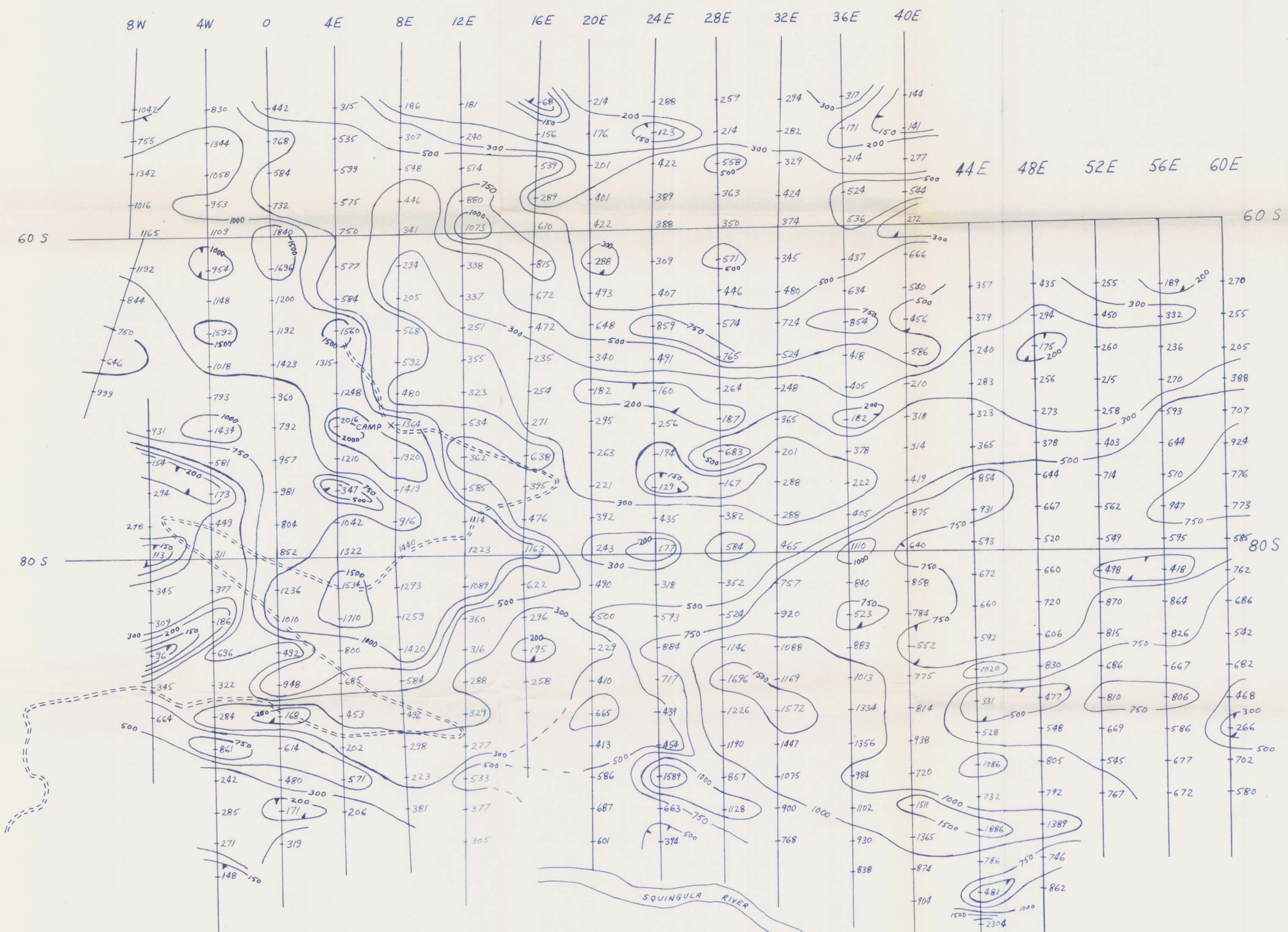
LOCATION: _____
AZIMUTH: _____

2/2 | HOLE No: 90-76-3
PROPERTY: _____

DIP: _____ LENGTH: _____ ELEVATION: _____ CLAIM No: _____
STARTED: _____ CORE SIZE: _____ DATE LOGGED: _____ SECTION: _____
COMPLETED: _____ DIP TESTS: _____ LOGGED BY: _____
PURPOSE: _____ CONTRACTOR: _____ HOLE CASED? _____ CORE STORED AT: _____

| FOOTAGE | | ROCK TYPE | | | | | | | | STRUCTURE | | | MINERALISATION | | | ASSAYS | | | | | | | | | | |
|---------|----|-------------|--------|---|-----------|--------|---------|---|------------|------------|----------|---------|----------------|----------|---|--------|-----------|------------|--------|----------|-------|----------|------|--------|--------|--|
| FROM | TO | COMPOSITION | COLOUR | TEXTURE | GRN. SIZE | MATRIX | FOSSILS | % | ALTERATION | FRACT INT. | ATTITUDE | BEDDING | ATTITUDE | TYPE | % | MODE | GRN. SIZE | SAMPLE No. | LENGTH | INTERVAL | % REC | % Cu EST | % Cu | oz. Ag | oz. Au | |
| | | | | Becoming highly fractured & robbly bedding where evident | | | | | | @ | 136-156 | locally | | is gouge | | | | | | | | | | | | |
| | | | | Calcareous nature due primarily to Cal. veinlets & diffusion from them | | | | | | | | | | | | | | | | | | | | | | |
| | | | | bedding app'ly @ 45° @ 170' | | | | | | | | | | | | | | | | | | | | | | |
| | | | | Fault Brx @ 168' & 65° | | | | | | | | | | | | | | | | | | | | | | |
| | | | | 187.5-190' large chunk L.S. See condensed log. unmin'd lower contact ~45° | | | | | | | | | | | | | | | | | | | | | | |
| | | | | SST Sed. gvn size now 3-4 | | | | | | | | | | | | | | | | | | | | | | |
| | | | | becoming highly fractured @ 213-222 good gouge @ 218 ~ 30°??-45°?? see condensed log @ 218' | | | | | | | | | | | | | | | | | | | | | | |
| | | | | FLI @ 200 ~ 30° abundant gZ/cal veinlets | | | | | | | | | | | | | | | | | | | | | | |
| | | | | Rock locally quite limy | | | | | | | | | | | | | | | | | | | | | | |
| | | | | FLI 1.5' wide @ 60° @ 237-238' limy gouge w/ brx & Zz frags & small 2" brx @ 221 & 222' | | | | | | | | | | | | | | | | | | | | | | |
| | | | | Bedding 20° @ 241' | | | | | | | | | | | | | | | | | | | | | | |
| | | | | bottom of hole; bedding @ 10° | | | | | | | | | | | | | | | | | | | | | | |
| | | | | Course pyrite blebs founded @ 242' | | | | | | | | | | | | | | | | | | | | | | |

#5946



LEGEND

— CUT LINE

=== ROAD

700' APPARENT RESISTIVITY $\rho_a/2\pi$ OHM FEET

CONTOUR INTERVAL 150, 200, 300, 500, 750, 1000, 1500

P-660 FREQUENCY DOMAIN I.P.
 DIPOLE - DIPOLE ARRAY $a=200'$, $N=2$
 0.3 AND 5.0 HERTZ
 OPERATORS: MORRISON AND DEPAOLI

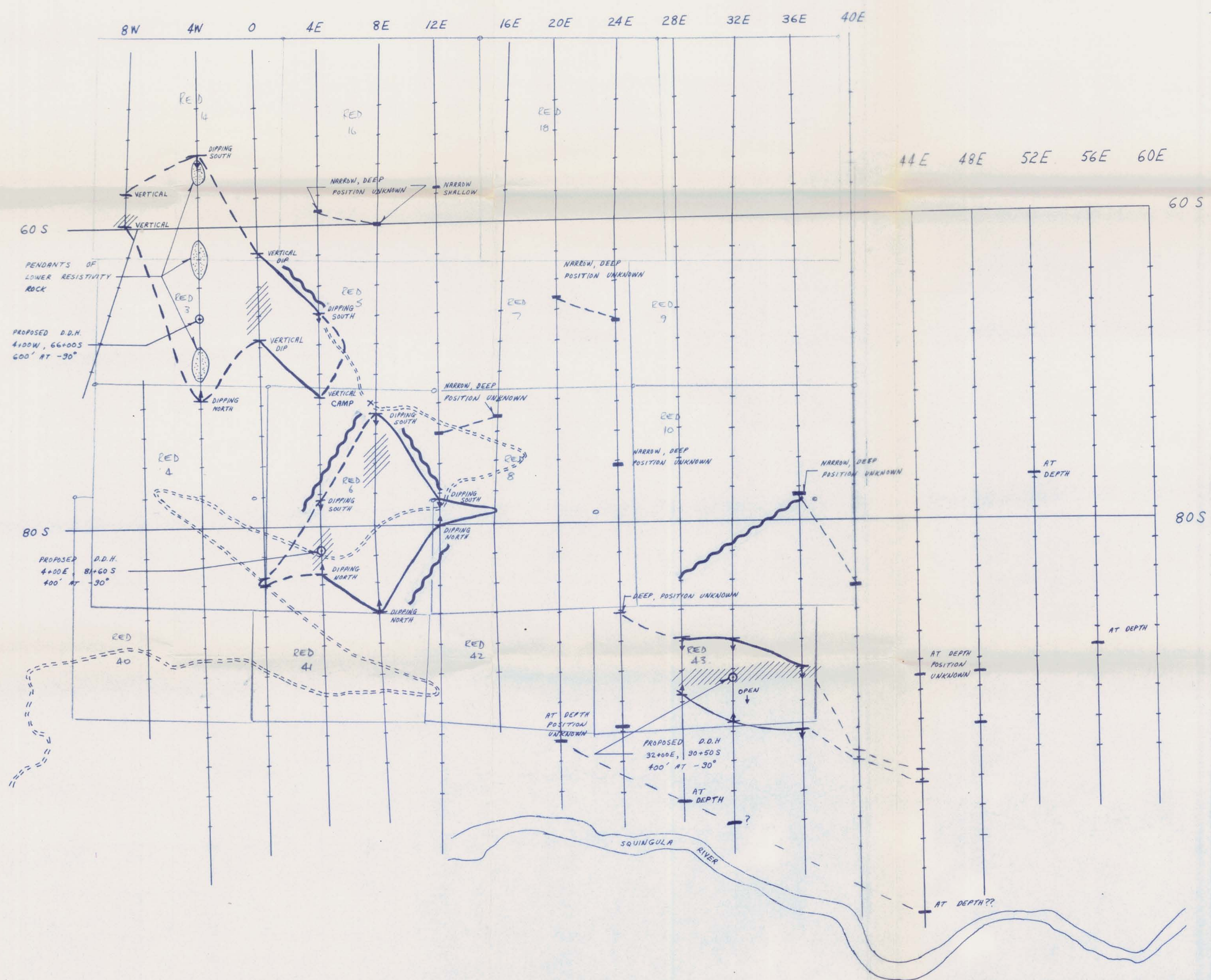
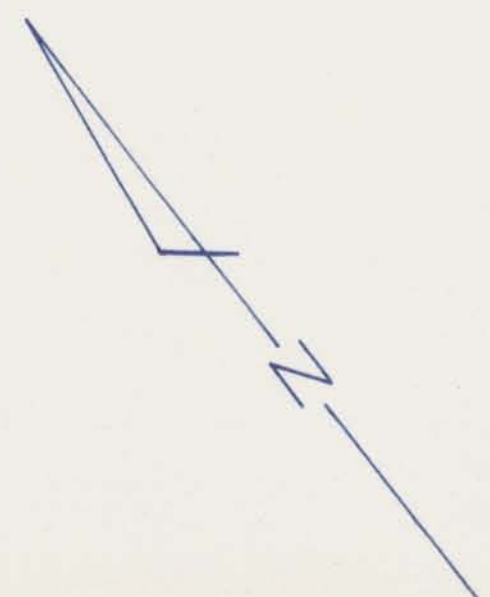
Department of
 Mines and Petroleum Resources
 ASSESSMENT REPORT
 NO. 5946 MAP #1

CANADIAN SUPERIOR EXPLORATION LIMITED
 SMITHERS REGIONAL OFFICE

RED GROUP
 PLAN RESISTIVITY, N=2

DRAWN BY: G.M.D. DATE: JUNE 1975 SCALE: 1"=400'

FIGURE 4 TO ACCOMPANY 1975 GEOPHYSICAL REPORT
 REVISED FOR 1976 REPORT BY G.M.D.



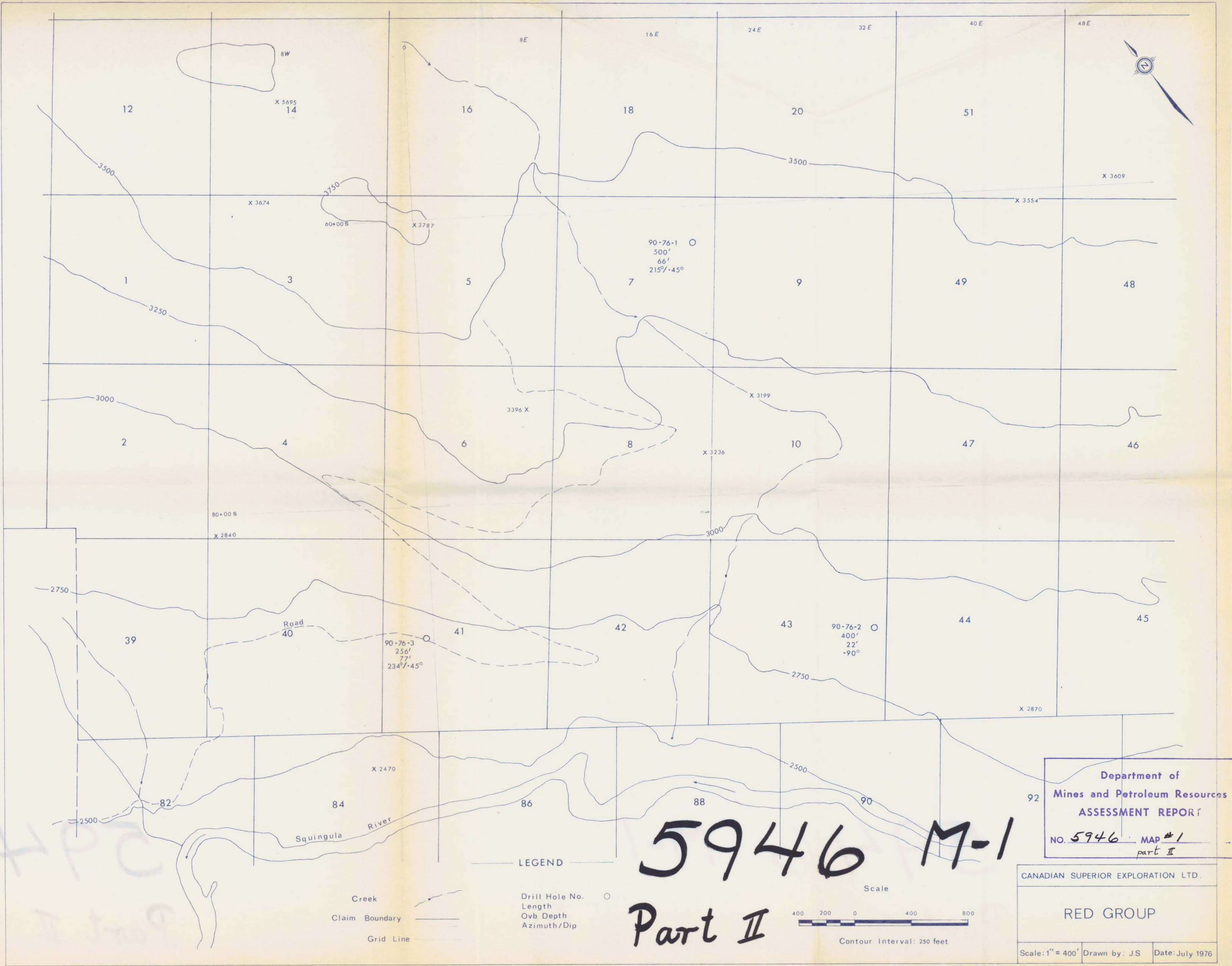
- CUT LINE
- ==== ROAD
- ⌞ DEDUCED LIMESTONE CONTACT AND DIP FROM PSEUDOSECTION ANALYSIS PROJECTED TO SURFACE
- INTERPRETED INTERLINE LIMESTONE CONTACT
- - - POSSIBLE INTERLINE LIMESTONE CONTACT
- APPARENT RESISTIVITIES INDICATIVE OF LIMESTONE
- //// COINCIDENT PFE VALUES > 3% PROJECTED TO SURFACE
- ⊙ INTERPRETED PENDANTS OF LOWER RESISTIVITY ROCK
- ~ POSSIBLE FAULTS
- ⊙ RECOMMENDED DRILL HOLES
- CLAIM POST

Department of
Mines and Petroleum Resources
ASSESSMENT REPORT
NO. 5946 MAP #3

CANADIAN SUPERIOR EXPLORATION LIMITED
SMITHERS REGIONAL OFFICE

RED GROUP
GEOPHYSICAL INTERPRETATION

| | | |
|--------------------------------|--------------------------------------|----------------|
| DRAWN BY: G.M.D. | DATE: JUNE 1975 | SCALE: 1"=400' |
| FIGURE: 6 | TO ACCOMPANY 1975 GEOPHYSICAL REPORT | |
| REVISED FOR 1976 REPORT BY GMD | | |



Department of
 Mines and Petroleum Resources
 ASSESSMENT REPORT
 NO. 5946 MAP #1
 part II

CANADIAN SUPERIOR EXPLORATION LTD.
 RED GROUP
 Scale: 1" = 400' Drawn by: JS Date: July 1976

5946 M-1
 Part II

HP
 I 1709