

5979

DIAMOND DRILL REPORT  
MWC CLAIMS  
MT. WASHINGTON PROPERTY  
92 F 11, 14  
by  
R. SOMERVILLE, P. ENG.

92 F / 14 W September 1976

5979



IMPERIAL OIL LIMITED

Minerals Section

#314 - 1281 - W. Georgia Street  
Vancouver 5, B. C.  
Area Code 604 - 681-8231

MV-2721

September 3, 1976

File: 6023

The Mining Recorder  
Nanaimo Mining Division  
Court House  
Nanaimo, B.C.

Dear Sir:

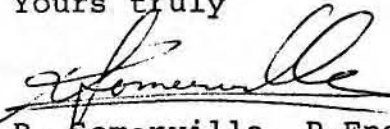
I am enclosing the following documents and maps as part of a Diamond Drilling Report:

- (1) A 1:250,000 and a 1:50,000 topographical map showing the geographical location of the property.
- (2) A copy of a 1" = 800' Location map showing drill holes 75-3, 81, 82 and 83.
- (3) A copy of each of two Location maps showing the hole locations relative to claim boundaries. (at 1" = 200' for 81, 82, 83 and at 1" = 800' for hole 75-3).
- (4) A copy of each of the logs for D.D.H. Nos. MWC 81, 82 and 83 and for 75-3.
- (5) An itemized cost statement for the May and June, 1976 drilling, plus a copy of the drill contractor's invoice; also a drill contractor's invoice for hole 75-3.
- (6) A copy of an Affidavit on Application to Record Work for the CD group and EF group.
- (7) A copy of three Notices to Group for AB, CD and EF groups.

Please note that hole 75-3 was drilled to 600' by September 12th, 1975. This work was filed on September 15, 1975. On September 15th, 1975 the drilling continued and the hole was deepened to 987', where it was stopped. This 387' of drilling is now being filed for assessment work.

I trust you will find everything in order.

Yours truly

  
R. Somerville, P.Eng.

RS/mj  
Encls.

MINERAL RESOURCES BRANCH  
ASSESSMENT REPORT

No. 5979

#1

DDH LOCATION  
(IN POCKET)



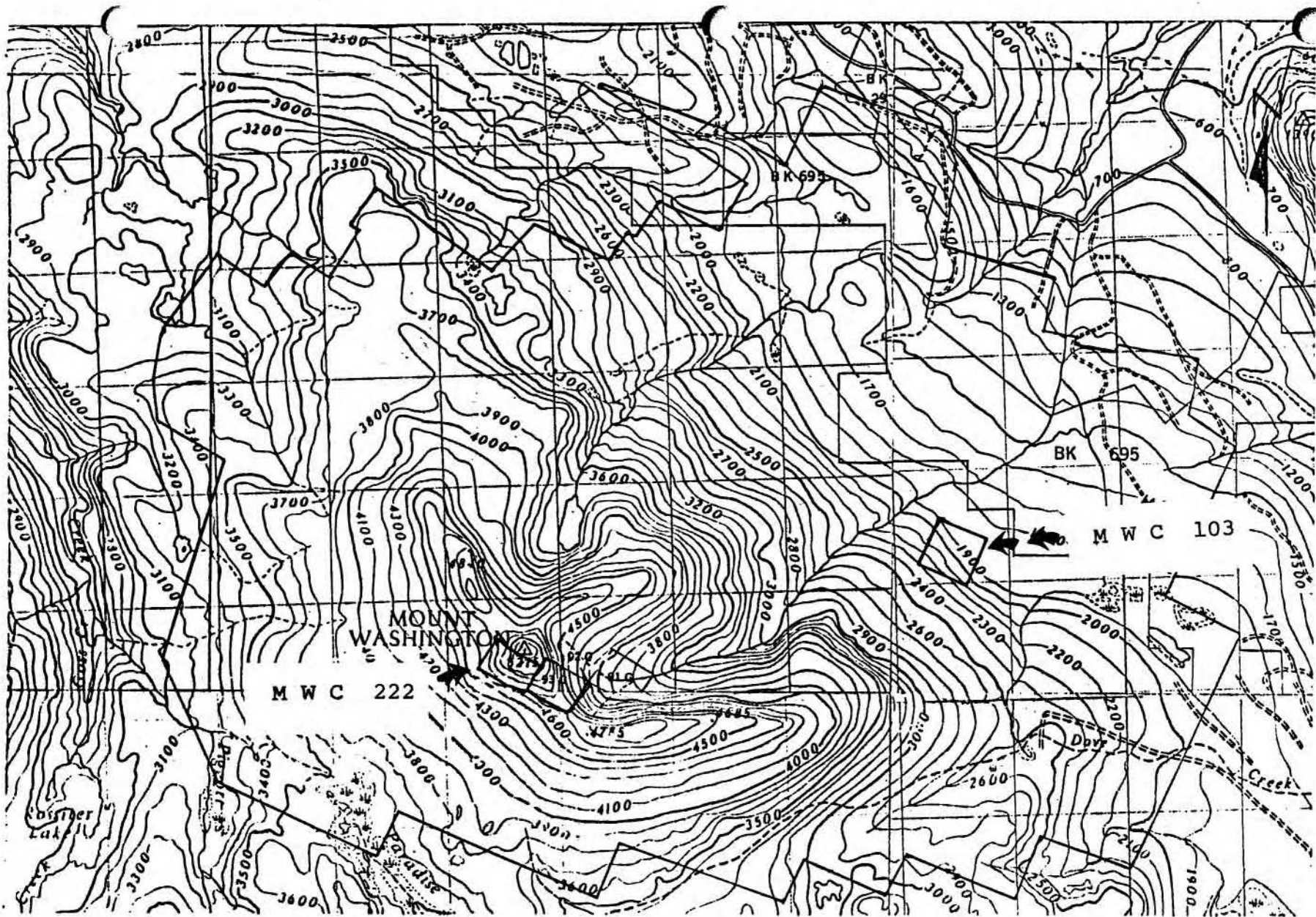
General Location Map

Map No.

Scale: 1:250,000



MINERAL RESOURCES BRANCH  
 ASSESSMENT REPORT  
 NO. 5979



MT. Washington Claim Boundary and Index Map

Scale 1:50,000

MINERAL RESOURCES BRANCH

ASSESSMENT REPORT

NO.

5979

To accompany Report by R. Somerville dated Sept. 12/75

DIAMOND DRILL CORE LOG

DRILL HOLE NO.	MW 81	LOCATION:	On the Tsolem main road 2630 N, 2800 E
AZIMUTH:		CLAIM:	MWC 103
		CORE SIZE:	B.Q.
INCLINATION:	90°	CORE STORAGE:	IOL Warehouse Puntledge Avenue Courtenay, B.C.
ELEVATION:	1980'		

DESCRIPTION

FROM	TO	DESCRIPTION
0	5'	<u>Casing</u>
5'	427	<u>Intrusive Breccia</u> Mottled, medium grey-green <u>matrix</u> of crushed rock flour, heavily biotitized in some sections generally strongly silicified and moderately to slightly altered by actinolite ± chlorite in some sections.  The <u>fragments</u> consist of (1) generally large shards of Karmutsen (?) basalt (3" - 14"), which are black and fine grained; (2) very small ¼" - ½" shards of Comox (?) siltstone which are light grey and very fine grained and siliceous; and (3) small ½" - 2" fragments of diorite - a mottled fine grained to medium grained hypidiomorphic equigranular intrusive. The basalt fragments constitute an estimated 50% of the volume of the shards and the diorite 35% with the siltstone making up some 15%.  0 - 354 moderately and occasionally slightly biotitized with moderate to heavy patchy actinolite 3 - 5% total sulphides (pyrite and chalcopyrite).  354 - 427 Alteration decreasing to slight, 1 - 3% sulphides.
		End of hole







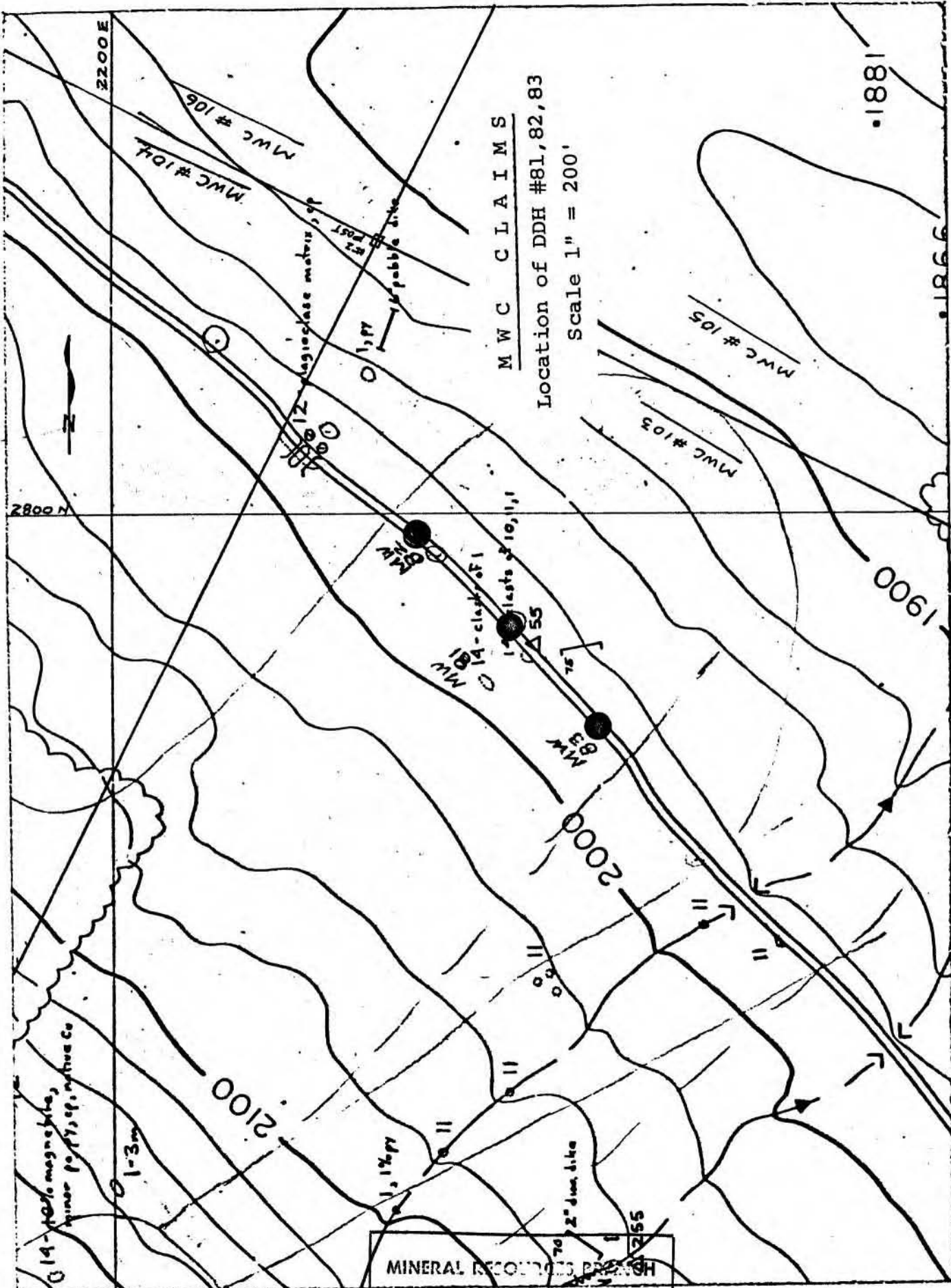
DIAMOND DRILL CORE LOG

WELL HOLE NO. MW 83 LOCATION: on the Tsolem main road  
2480 N, 2930 E  
CLAIM: MWC 103  
AZIMUTH: CORE SIZE: B.Q.  
INCLINATION: 90° CORE STORAGE: IOL Warehouse  
Puntledge Ave.  
ELEVATION: 1980 Courtenay, B.C.

DESCRIPTION

FROM	TO	DESCRIPTION
0	8	<u>Casing</u>
8	181	<u>Intrusive Breccia</u> as described in MW 81 traces secondary biotite and actinolite - trace pyrite.
181	217	<u>Diorite</u> medium grey, uniform appearance fine grained matrix with < 5% quartz good 1/8 - 1/4" euhedral to subhedral hornblende phenocrysts.
	226	<u>Andesite Dyke</u> vfg, dull olive green; dyke invades breccia at 226 incorporating fragments of intrusive breccia - thus dyke is past breccia.
226	307	<u>Intrusive Breccia</u> as described in MW 81 very little alteration except minor chlorite and very sparse actinolite on rare milky quartz veins < 1% pyrite.
	End of hole.	





**M W C C L A I M S**  
 Location of DDH #81, 82, 83  
 Scale 1" = 200'

MINERAL RESOURCES BRANCH  
 ASSESSMENT REPORT  
 NO. 5979

*Stonerville*



Cost Statement  
Diamond Drilling at Mt. Washington Property

May - June, 1976  
Re D.D.H. Nos. MWC 81, 82 and 83

1. Wages

R.D. Somerville, P.Eng.:

May 7 - May 31, 1976 - 16 days

June 1 - June 4, 1976 - 4 days

20 days @ \$100      \$2,000.00

2. Field Expenses

Motels, Meals, Miscellaneous Supplies and  
Support Costs

612.62

3. Services and Supplies

Warehouse Rental: May 16 to June 15

Utilities

2-Way Radio Equipment

Map Reproduction

Core Boxes

699.20

4. Drilling Costs

June 3, 1976: Interior Diamond Drilling Ltd.

20,081.30

5. Transportation Costs

Truck: 4-Wheel Drive - 20 days @ \$17.00/day

Gas, Oil, Repairs

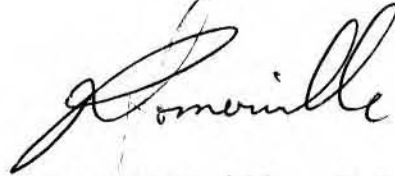
Air Fares

484.14

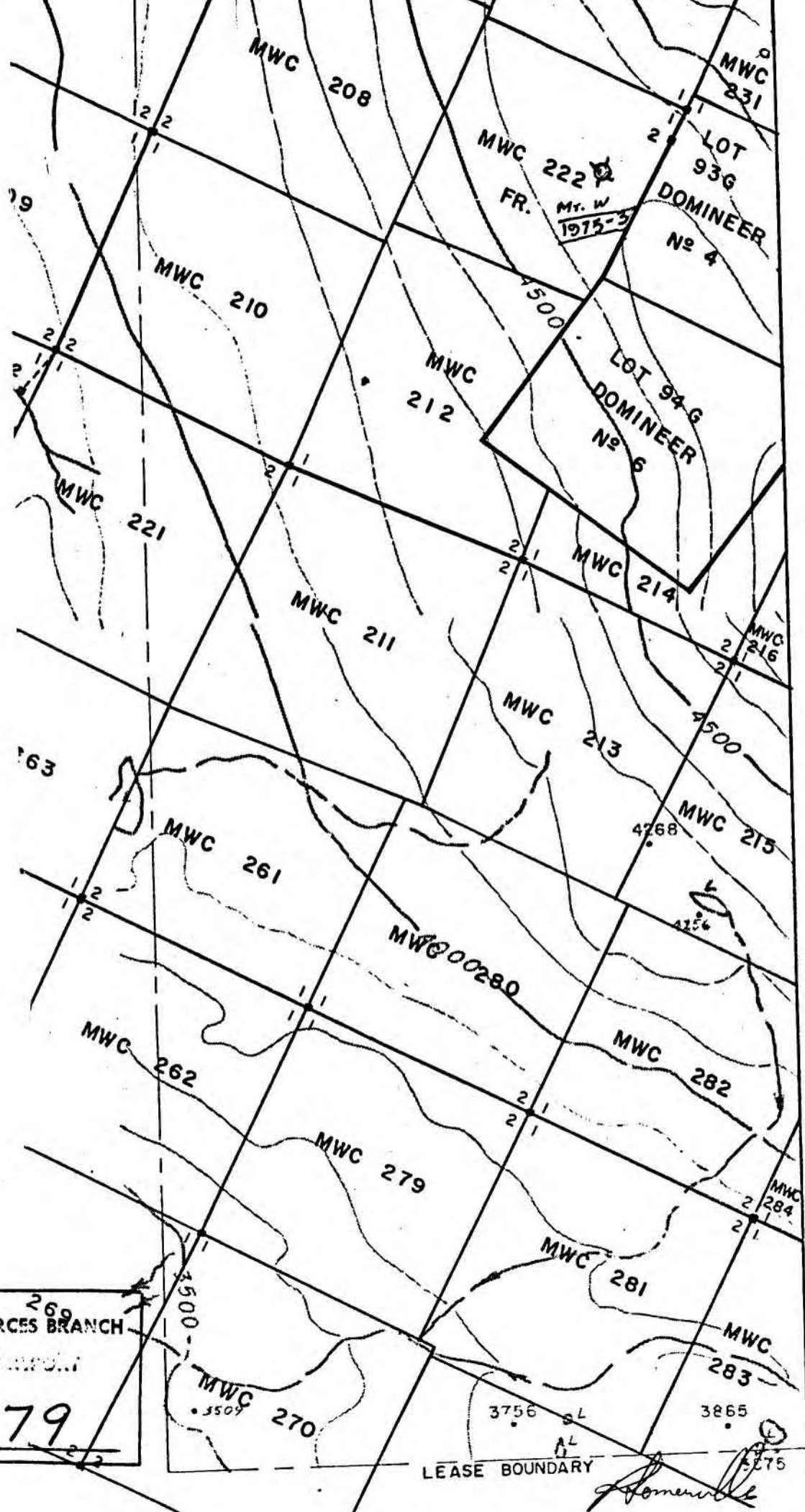
Total Costs:

\$23,877.26

The above statement is true and correct to the best  
of my knowledge.



R. Somerville, P.Eng.



MINERAL RESOURCES BRANCH  
 Assessment Report  
 NO. 5979

LEASE BOUNDARY

*[Handwritten Signature]*

STATEMENT / ÉTAT DE COMPTE  
INVOICE

JUN 9 RECD

IN ACCOUNT WITH / EN COMPTE AVEC

INTERIOR DIAMOND DRILLING LTD.

R.R. 2, SUMMERLAND, B.C. 02 120

TO / À  
IMPERIAL OIL LIMITED, MINERALS  
314 - 1281 WEST GEORGIA ST.,  
VANCOUVER, B.C., V6E 3J7

Terms / Conditions

Date JUNE 3 1976

	DRILLING ON			
	MOUNT WASHINGTON:			
	MOBILIZATION			
	TO FIRST SITE	✓	1,000.00	
	TO SECOND SITE	✓	500.00	
	TO THIRD SITE	✓	500.00	
	TO PORT McNEILL	✓	500.00	
	COREING 1038' @ 17.00/FT.	✓	17,646.00	
	3' BW CASING @ 9.50/FT.	✓	28.50	
	1 BW CASING SHOE	✓	176.80	
	10 HOURS STANDBY @ 23.00/HR.		230.00	
	TOTAL BALANCE		20,581.30	
	THANK YOU			
	<i>Ronald Mac</i>			
	APPROVED FOR PAYMENT			
	BY <i>[Signature]</i>			
	CHARGE		83-025-28-6008-1150-32d	8
			<del>83-025-28-6023-1150-3201-20,081.30</del>	-500.00

JUN 14 ENTB



DIAMOND DRILL CORE LOG

DRILL HOLE NO.	MT. WASHINGTON 1975 - 3	LOCATION:	1200' @ 230° from No.1 Post of MWC 222 on crest of
AZIMUTH:	-	CLAIM:	MWC 222 FR.
INCLINATION:	-90°	CORE STORAGE:	IOL Warehouse Puntledge Ave. Courtenay, B.C.
ELEVATION:	-4690		

DESCRIPTION

FROM	TO	DESCRIPTION
0	600'	<u>Intrusive Breccia.</u> composed of angular to rounded loosely packed clasts of predominantly hornblende quartz-diorite mixed with minor quantities of siltstone (Comox?) fragments and more rarely altered chloritic fragments which conceivably could be basalt in origin. The matrix consists of finely ground rock flour and very small fragments with some minor silicification.
	at 312'	3" silicified zone at 90° trace of pyrite and chalcopyrite.
	at 324½'	3 x 1" over 8" silicified bands. 25% chalcopyrite over ¼" in one band.
	at 330'	silicified diorite fragment with traces of chalcopyrite in chlorite.
341	365	intense clay alteration with frequent silicified patches - occasional 1" - 3" quartz vein sparse pyrite arsenopyrite and realgar.
365	372	moderately fractured, occasional bleached patch, very little alteration.
372	390	moderate clay alteration in patches, minor pyrite, arsenopyrite, and realgar.
390	422	frequent silicified patches with quartz stringers, carrying pyrite, arsenopyrite and realgar.
422	439	increasing pyrite to average 3% total sulphide, minor arsenopyrite, realgar decreases to negligible, heavy clay alteration.
439	444	secondary biotite rimming of breccia fragments, minor sulphides.

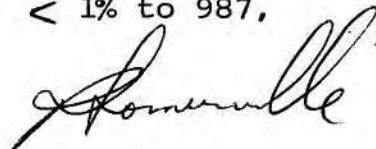


DIAMOND DRILL CORE LOG

DIAMOND HOLE NO. MT. WASHINGTON LOCATION:  
 1975 - 3 CLAIM:  
 AZIMUTH: CORE SIZE:  
 INCLINATION: CORE STORAGE:  
 ELEVATION:

DESCRIPTION

FROM	TO	DESCRIPTION
444	480	biotite and clay alteration mixed and alternating , no realgar, occasional band of near massive pyrite - chalcopyrite.
480	544	end of clay alteration increasing amount of secondary biotite with sparse pyrite, pyrrhotite and chalcopyrite.
	at 510'	10" vuggy quartz with 50% pyrite, chalcopyrite - vuggy halo
544	600	3 % total sulphides, minor chalcopyrite and pyrrhotite mainly pyrite.
Sept. 12/75		heavy sericite alteration. Secondary biotite only slightly noticeable.
600	622	slight clay and secondary biotite alteration moderately fractured.
622	627	moderate clay and sericitic alteration envelopes on well fractured core. 3-5% aspy, realgar, pyrite, chalcopyrite.
627	669	moderately biotitized with short sections of heavy clay and sericite (good clay and biotite alteration are not seen in same sections).
669	702	slight biotite alteration with occasional patch of heavy sericite.
702	795	greater number of (1"-4") larger clasts mainly diorite, less matrix moderate to heavy secondary biotite 3%-6% total sulphides.
795	906	moderately biotitized occasional patch of minor chlorite and sericite alteration in siliceous haloes, probably averaging 3.5% sulphide, mainly pyrite tr. pyrrhotite, tr. chalcopyrite.
906	987	biotite and clay alteration mixed and alternating - slight to moderate; 3% sulphides to 959; 2% to 973; < 1% to 987, pyrite, pyrrhotite and chalcopyrite.
Sept.	End of hole 22, 1975	



STATEMENT / ÉTAT DE  
INVOICE

Interio  
R.R. #2  
Summerl

Imperia  
314 - 1202  
Vancouver 5, B.C.

Terms / Conditions

Date Oct. 10 1975

	Diamond Drilling on	
	Mt. Washington claims-	
	DDH. MW 75-3 Extension	
	and standby	
	100 ft @ 15.00	1,500.00
287	387 ft. @ \$20.00	57,740.00
	Moves 2 @ \$600.00	<del>1,200.00</del>
	Casing shoe	138.00 ✓
	Casing 5 ft. @ \$7.50	37.50 ✓
	Total	<del>9,115.50</del>
		8015.50
		<u>8015.50</u>
	PAID ONLY	
	Invoiced by	
	<i>S. Leman J. May</i>	
	APPROVED FOR PAYMENT	
	BY <i>[Signature]</i>	
	CHARGE <u>83-025-28-6023-1150-3201</u>	
		= 8015.50

OCT 29 1975  
ENTD.  
RECD

*Please*  
*do not*  
*film*

PHONE CITY

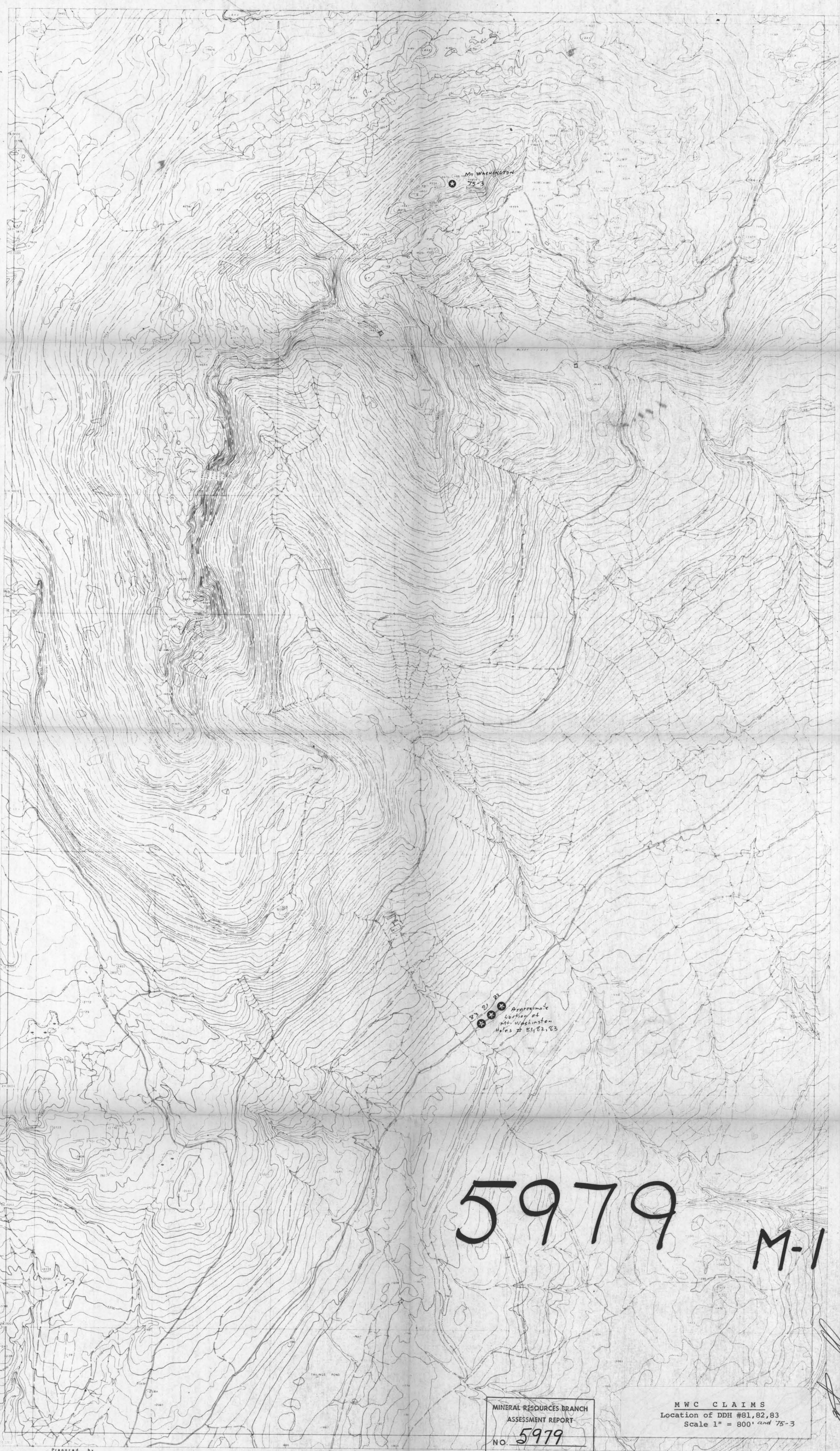
WHITE YOU WERE G.I.T.

Wants to see you  
Call for more  
Leads

Observer

(20)





5979 M-1

MINERAL RESOURCES BRANCH  
ASSESSMENT REPORT  
NO. 5979  
MAP NO. #1

MWC CLAIMS  
Location of DDH #81, 82, 83  
Scale 1" = 800' and 75-3

*Handwritten signature*