

5980

DIAMOND DRILL REPORT
MWC CLAIMS (AB Group)
MT. WASHINGTON PROPERTY
92 F 11, 14
by
R. SOMERVILLE, P. ENG.

92F/14W September 13, 1976

5980



IMPERIAL OIL LIMITED

Minerals Section

#314 - 1281 - W. Georgia Street
Vancouver 5, B. C.
Area Code 604 - 681-8231

MV-2736

September 13, 1976

File: Project #6023

The Mining Recorder
Nanaimo Mining Division
Court House
Nanaimo, B.C.

Dear Sir:

I am enclosing the following documents as part of a
Diamond Drilling report:

- 1) A 1:250,000 and 1:50,000 map showing the property location and the location of a few key claims.
- 2) A 1" = 800' map showing the location of the collar of the drill hole MW84 to the claim boundary.
- 3) A 1" = 3200 Claim Location map.
- 4) A Cost Statement for August 1st to September 10, 1976.
- 5) Diamond drill log for the hole MW84.
- 6) Invoices supporting major items in the cost statement.
- 7) A copy of an Affidavit on Application to Record Work for the A B group.

I trust you will find everything in order.

Yours truly,



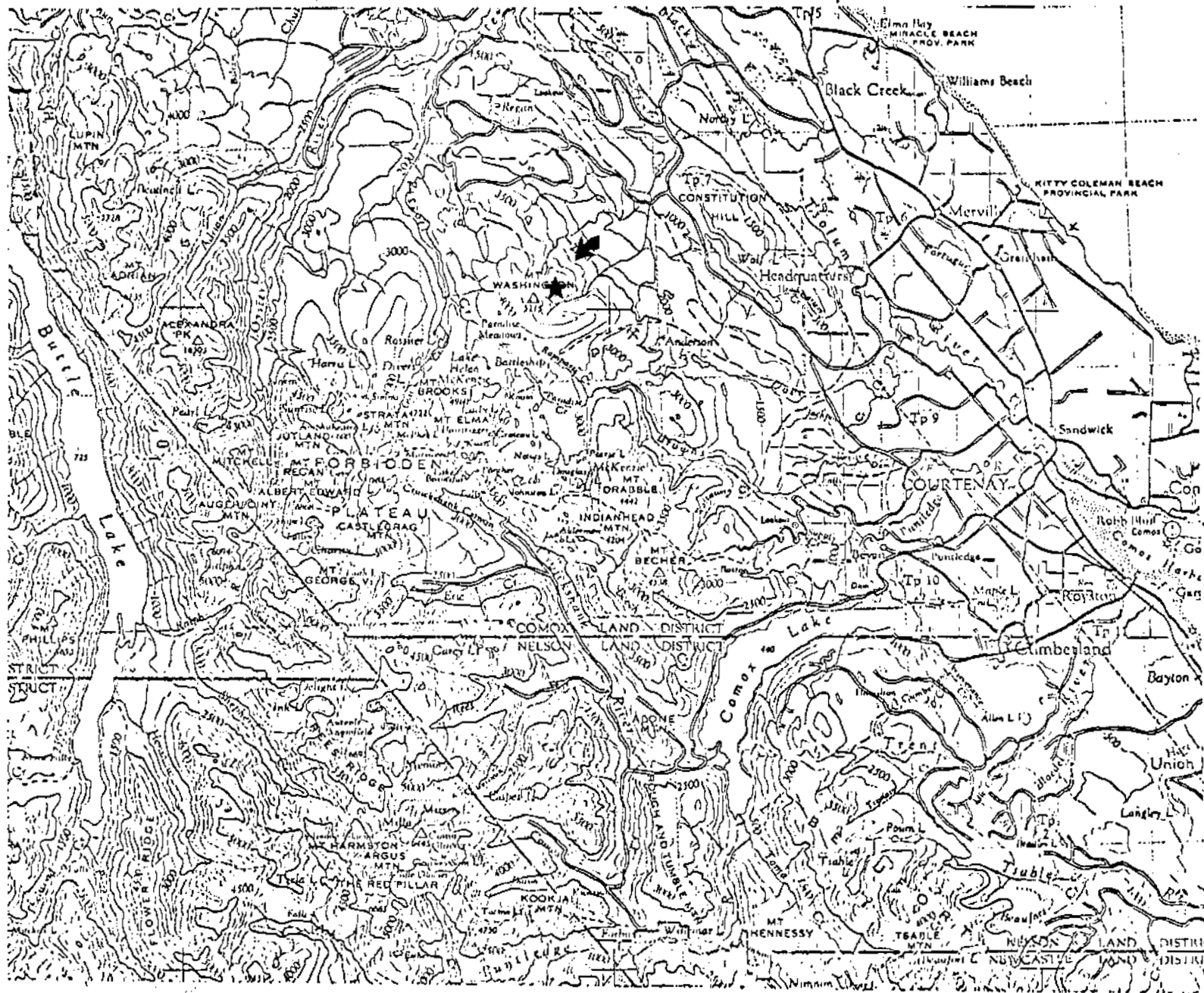
R. Somerville

RS:JW

Encl.

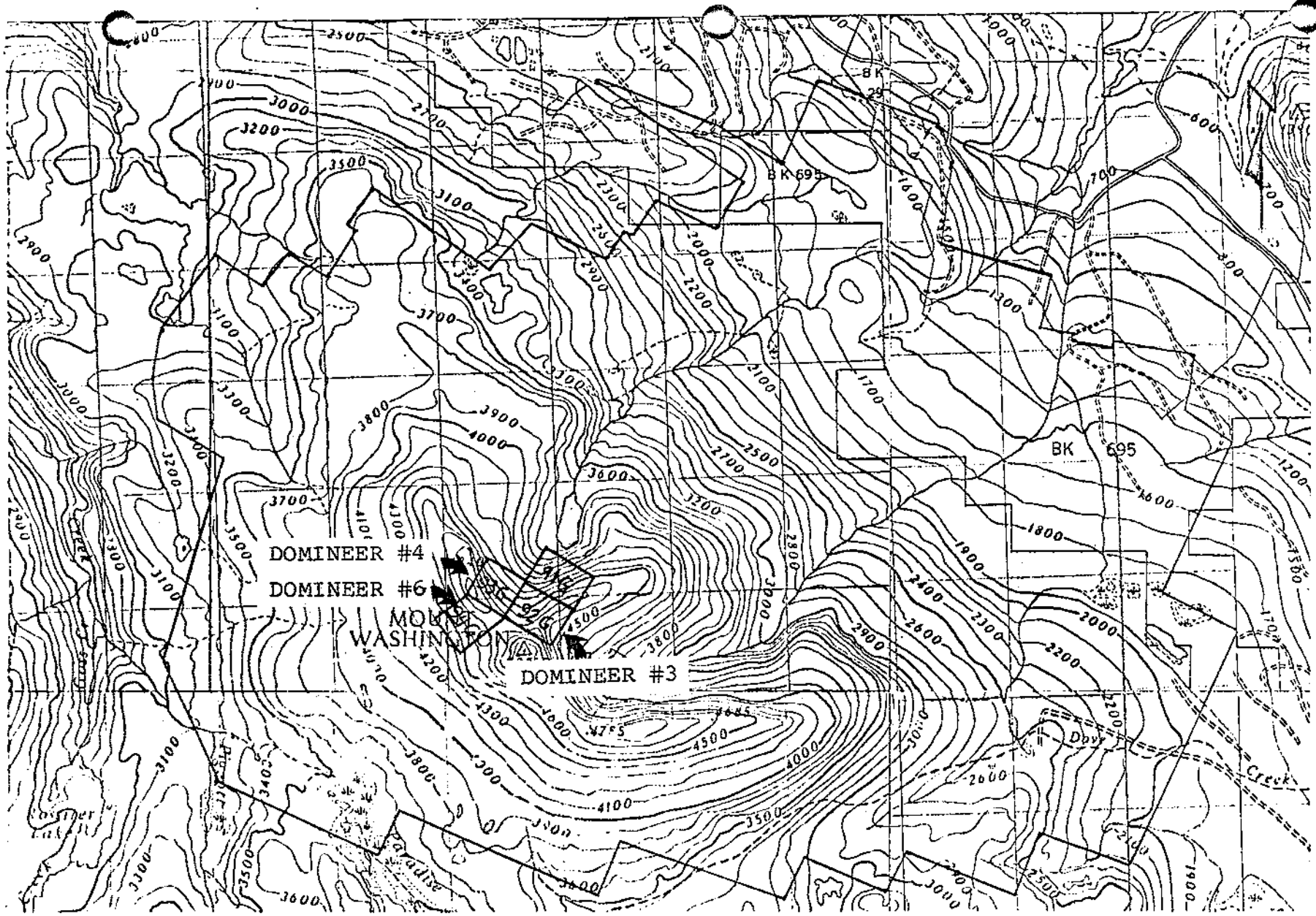
Department of
Mines and Petroleum Resources
ASSESSMENT REPORT

NO. 5980 MAP.....



[Handwritten signature]

5980

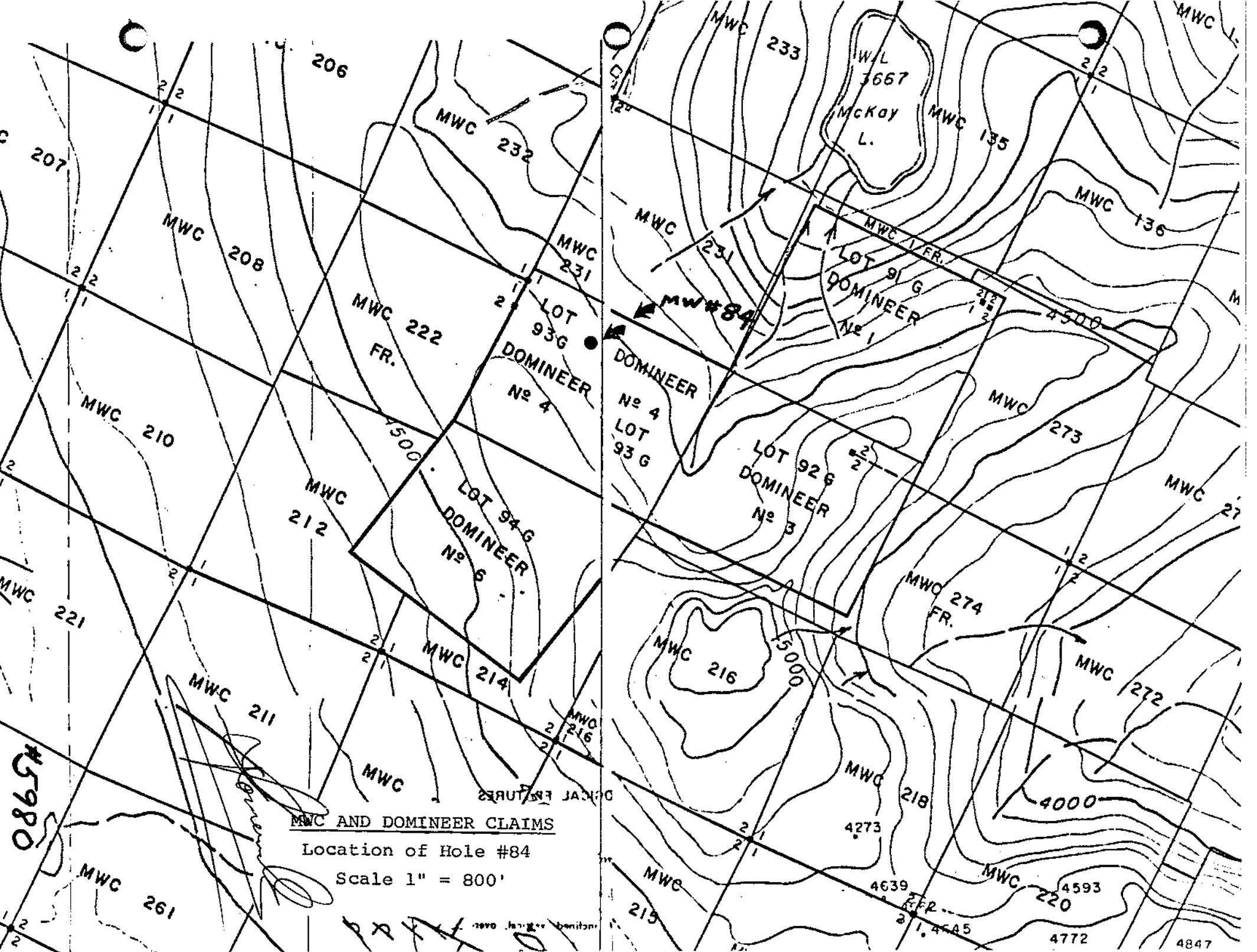


Mt. Washington Claim Boundary and Index Map

Scale 1:50,000

To accompany Report by R. Somerville dated Sept. 12/75

5980



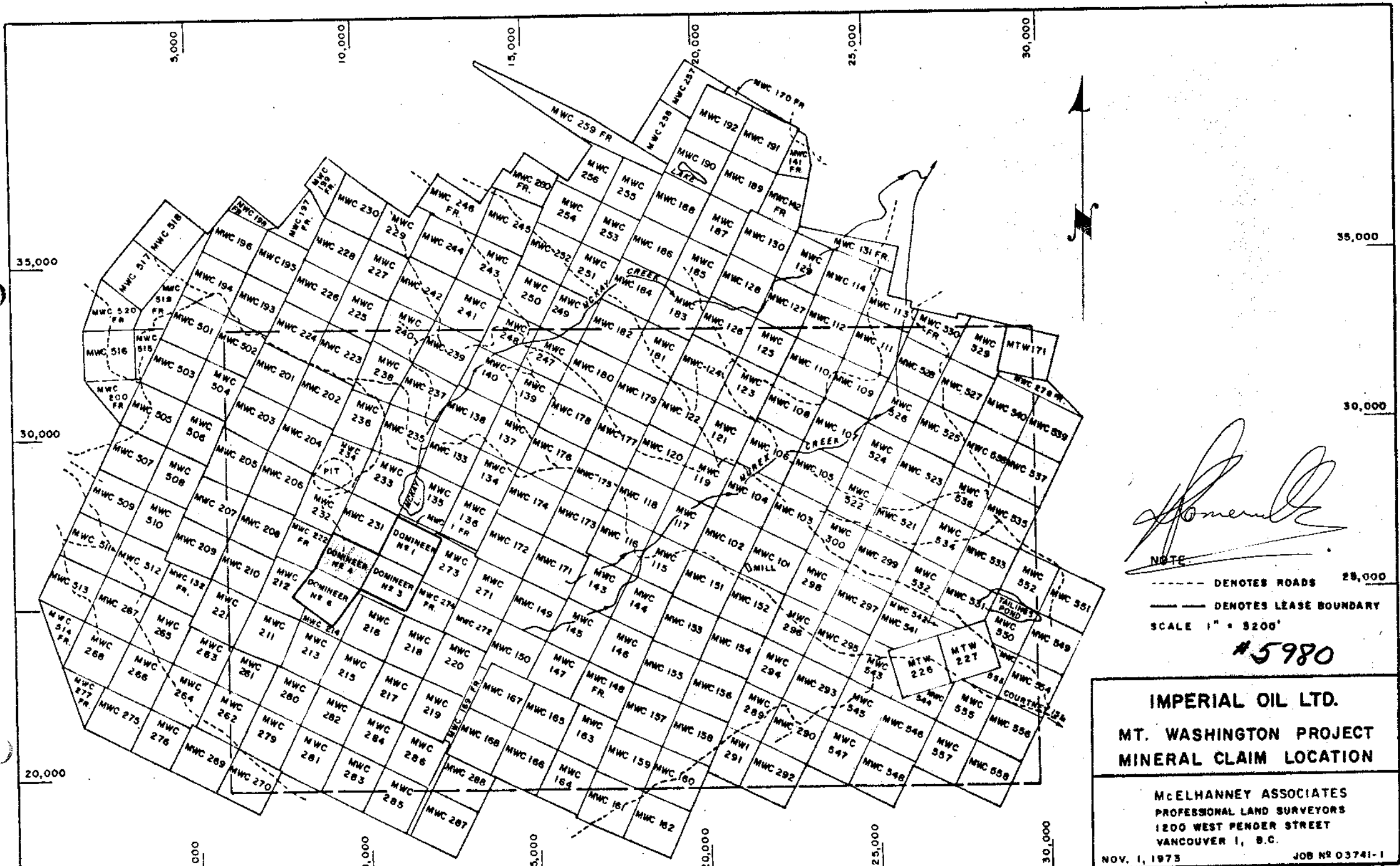
MWC AND DOMINEER CLAIMS

Location of Hole #84

Scale 1" = 800'

Handwritten: 5980

Handwritten: P.P.A. 1980



[Handwritten Signature]

NOTE:
 - - - DENOTES ROADS
 ——— DENOTES LEASE BOUNDARY
 SCALE 1" = 3200'

#5980

IMPERIAL OIL LTD.
MT. WASHINGTON PROJECT
MINERAL CLAIM LOCATION

McELHANNEY ASSOCIATES
 PROFESSIONAL LAND SURVEYORS
 1200 WEST PENDER STREET
 VANCOUVER 1, B.C.
 NOV. 1, 1973 JOB NO 03741-1

COST STATEMENT
DIAMOND DRILLING - MT. WASHINGTON PROPERTY
August 1 to September 10, 1976

Wages

P. McGuigan, Geologist			
Aug. 3 to Sept. 11, 1976 - 40 days @ \$52.00	\$2,080.00		
R. Pozdzik,	52 hours @ \$3.00/hr.	<u>156.00</u>	
			\$2,236.00

Travel Expenses

Motels, Meals, Miscellaneous Supplies and Support Costs			1,165.00
---	--	--	----------

Services and Supplies

Warehouse Rental: Aug. 1 to Sept. 30 @ \$295.85/mo.	591.70		
Utilities: 2 mos. @ \$15.00	30.00		
2-Way Radio Rental	30.00		
Map Reproduction	4.69		
(inv.) Tractor Dozer Rental (V.A. Parkin)	<u>780.00</u>		
			1,436.39

Diamond Drilling Costs

(inv.) Interior Diamond Drilling Ltd.	19,000.00		
and non-invoiced 27' of drilling	<u>486.00</u>		
			19,486.00

Transportation Costs

Truck Rental 4 x 4	1,391.64		
Gas, Oil, Repairs	265.31		
Trucking Costs (moving dozer tractor)	<u>180.00</u>		
			<u>1,836.95</u>

TOTAL: \$26,160.34

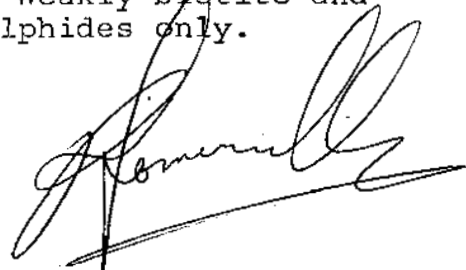


DIAMOND DRILL CORE LOG

DRILL HOLE NO. MW 84 From the peak of Mt. Washington:
 LOCATION: 2,320' at bearing 333°
 CLAIM: Domineer # 4
 AZIMUTH: 255° CORE SIZE: BQ
 INCLINATION: -60° CORE STORAGE: I.O.L. Warehouse
 Puntledge Ave.
 ELEVATION: 4,520' Courtenay, B.C.

DESCRIPTION

FROM	TO	DESCRIPTION
0	17	Casing.
17	23	Comox formation: siltstone. Buff coloured, moderately fractured. Sparse sulphides. Bedding and contact with hornblende quartz diorite - core angle 40°
23	184	Hornblende-porphyrific quartz diorite porphyry. 54' to 184' - moderate to strong chlorite and biotite alteration. Total sulphides 2%; chalcopyrite, pyrite and pyrrhotite present. Trace magnetite and actinolite along fractures.
184	278	Comox formation: siltstone and sandy siltstone. Moderate to strong biotite alteration with lesser potash feldspar alteration. Average total sulphides 5%. Pyrrhotite, chalcopyrite and pyrite.
278	329	Hornblende quartz diorite porphyry. Weak biotite and chlorite alteration. Total sulphides 2 to 3%. Pyrrhotite and chalcopyrite.
329	371	Comox formation: sandy siltstone. Moderate biotite and orthoclase alteration. Total sulphides 5%. Pyrrhotite and chalcopyrite. Contact 70°.
371	482	Porphyritic hornblende quartz diorite. Moderate biotite and chlorite alteration. Patchy weak silicification. Total sulphides 2%; chalcopyrite, pyrrhotite and pyrite. Trace magnetite.
482	484	Comox formation: siltstone. Strongly silicified. No sulphides. Contacts at 60°.
484	512	Fine grained hornblende-porphyrific quartz diorite. Strongly biotite altered, weakly chlorite altered. Total sulphides 2%; chalcopyrite, pyrrhotite, pyrite.
512	527	Comox formation: sandy siltstone. Weakly biotite and potash feldspar altered. Trace sulphides only.



DIAMOND DRILL CORE LOG

WELL HOLE NO. MW 84

LOCATION:

CLAIM:

AZIMUTH:

CORE SIZE:

INCLINATION:

CORE STORAGE:

ELEVATION:

DESCRIPTION

FROM	TO	DESCRIPTION
527	544	Comox formation: fine grained sandstone. Trace sulphides only.
544	565	Sheared and brecciated Karmutsen formation basalt. Strong biotite and chlorite alteration. Total sulphides 1%; chalcopyrite, pyrrhotite, pyrite.
565	940	Karmutsen formation: plagioclase porphyritic basalt. Slightly hornfelsed, moderately well fractured. Short intersections of strong biotite and chlorite alteration are present, but generally weakly chlorite altered. Total sulphides 1%; chalcopyrite, pyrrhotite and pyrite.
940	1,007	Porphyritic hornblende quartz diorite. Moderately to strongly fractured, intensity increasing toward 1,007'. Moderately biotite altered. Total sulphides 2%; chalcopyrite, pyrrhotite, pyrite. Fracture coatings of magnetite and actinolite.
1,007	1,027	Washington breccia. Angular fragments of plagioclase porphyritic basalt, hornblende quartz diorite and siltstone in a matrix of comminuted rock, magnetite, actinolite and sulphides. Total sulphides 2%; chalcopyrite, pyrrhotite (and pyrite).

Hole temporarily stopped at 1,027'. Drilling will continue !



STATEMENT / ÉTAT DE COMPTE

IN ACCOUNT WITH / EN COMPTE AVEC

INTERIOR DIAMOND DRILLING LTD.

R.R. 2, SUMMERLAND, B.C.
V0H 1Z0

TO / À

IMPERIAL OIL LIMITED, MINERALS SECTION,
314-1281 WEST GEORGIA STREET,
VANCOUVER, B.C. V6E 3J7.

Terms / Conditions

Date **SEPT. 9 1976**

	DRILLING ON MOUNT WASHINGTON:		
	MOBILIZATION TO MW 84 SITE	500.00	
	DEMobilIZATION TO SUMMERLAND	1,000.00	
	CORING MW84 1000 FT. 0'-500' 500' @ 17. ⁰⁰ /F	8,500.00	
	500'-1000' 500' @ 18. ⁰⁰ /F	9,000.00	
	TOTAL BALANCE	<u>19,000.00</u>	
	<p>THANK YOU, <i>Armed Man</i></p> <p>APPROVED FOR PAYMENT BY <i>W. C. H. Kirk</i></p> <p>CHARGE <u>83-025-78-6023-1150-3201</u></p>		

AUG 12 RECD

V. A. PARKIN

BULLDOZING and LOGGING

R.R. 3

Courtenay, B.C.
Telephone 334-4629

V9N 5M8

Date Aug. 10 / 76

In Account With

IMPERIAL OIL LTD. - MINERALS SECTION

314-1281 WEST GEORGIA ST.

VANCOUVER, B.C.

<u>lot time building road</u>	
<u>& moving equip.</u>	
<u>28 hrs @ 26⁰⁰</u>	<u>728⁰⁰</u>
<u>waiting time 4 hrs @ half rate</u>	<u>52⁰⁰</u>

Charge to Project 6023

Paul J. M. edging
 APPROVED FOR PAYMENT
 BY [Signature]

Balance

780.00

Tax

Total

CHARGE 83-025-28-6023-1730-3107

1 1/2% Per Month Interest Charged On Overdue Accounts

Pd. by chq. 408