

REPORT ON PERCUSSION DRILLING

DAWN CLAIMS

6001

Lornex Mining Corporation Ltd.

DAWN

by

G. Smith

Claims - Dawn #8 - Record No. 38238 M.  
Dawn #6 - Record No. 38236 M.

Location:

Highland Valley

- About 24 miles southeast of Ashcroft, B.C.  
Kamloops Mining Division  
121 00' W, 50 27' N, N.T.S. 92-I/6E.

92I/6E

MINERAL RESOURCES BRANCH
ASSESSMENT REPORT
No. 6001

Itemized Cost Statement

Personnel	Dates Worked	No. of Days	Rate/day	Cost
G. Smith	June 23	½	\$135/day	\$ 67.50
	Aug. 9 & 10	½	\$135/day	33.75
	Aug. 30	1	\$135/day	135.00
S. Gapp	July 6	½	\$ 95/day	47.50
B. Patterson	July 6	½	\$ 80/day	40.00
K. Elliott	Aug. 9 & 10	½	\$ 85/day	42.50
L. Lindquist	Aug. 18 & 25	½	\$ 95/day	47.50
J. Jones	Aug. 18 & 25	½	\$ 85/day	42.50
R. Yorke-Hardy	Aug. 31	½	\$110/day	55.00
Drilling Cost	700' X \$2.95 per foot			2,065.00
Water truck rental	2 days @ \$45.00 per day			90.00
Ream casing	7 feet at \$1.00 per foot			7.00
Assaying	67 samples X \$4.50 per sample			301.50
4 wheel drive 3/4 ton pickup truck	1 3/4 days @ \$40/day			60.00
1 Bulldozer & operator	½ day @ \$60 per hour			240.00
TOTAL				\$3,274.75

D. Lincoln Assay Laboratory Costs:  
G. Smith.

MAP  
#1

COMPASS AND CHAIN SURVEY  
OF LOCATION OF MINERAL  
CLAIMS.

IN  
POCKET

Summary

During the month of August 1976, two percussion holes were drilled on the Dawn claims (see included plan). Ten foot sludge samples were taken at 10 foot intervals and assayed for copper and molybdenum (see included assay sheets).

Percussion Hole 76 - 15

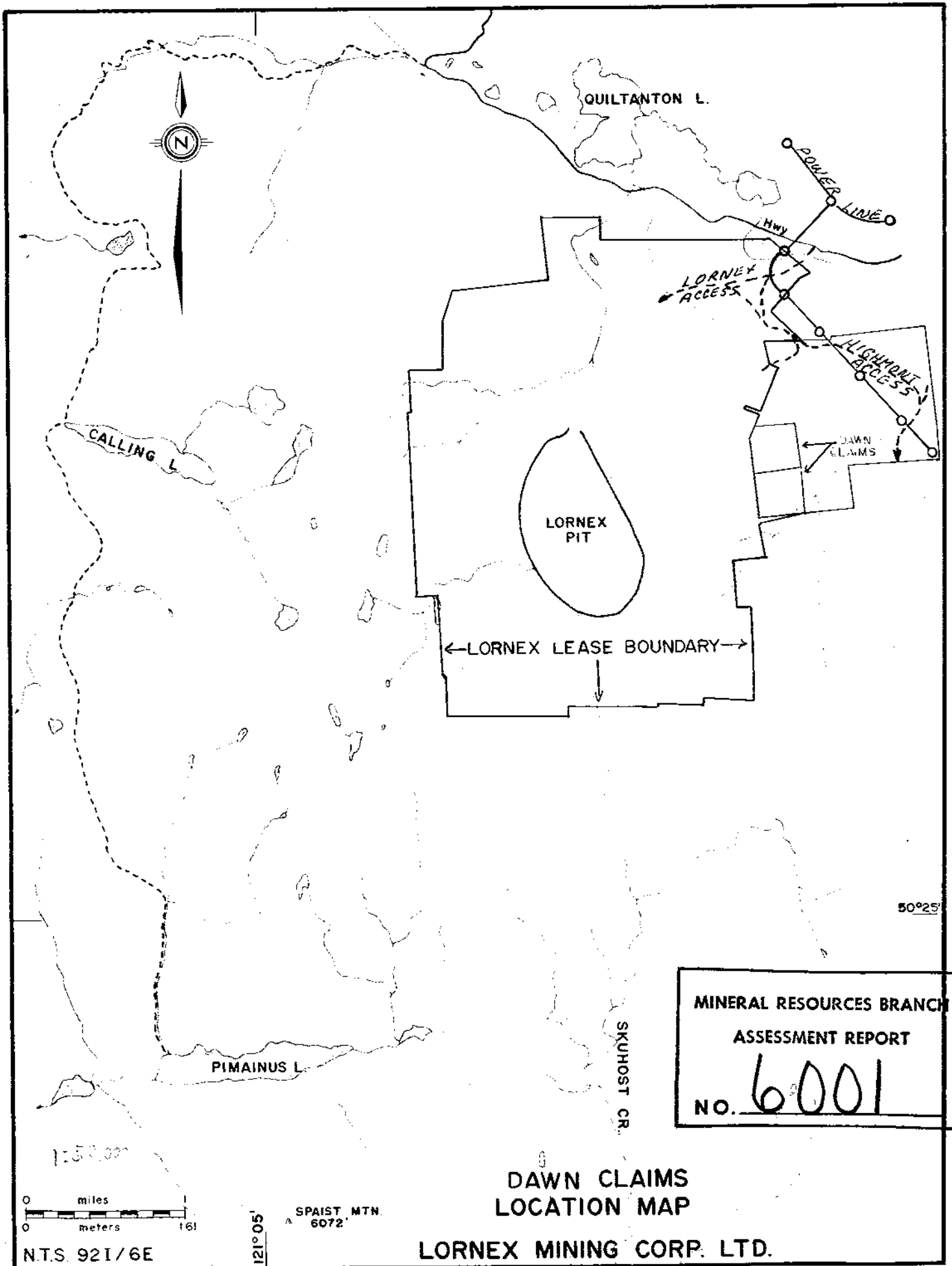
Location - Dawn #8, Record No. 38238 M.  
Hole Inclination - Vertical  
Collar Elevation - 4810 feet  
Depth of hole - 350 feet  
Depth of Overburden - 18 feet

Percussion Hole 76 - 16

Location - Dawn #6, Record No. 38236 M.  
Hole Inclination - Vertical  
Collar Elevation - 4717 feet  
Depth of hole - 350 feet  
Depth of overburden - 15 feet

*G. D. Smith*

G. D. Smith,  
Field Geologist



MINERAL RESOURCES BRANCH  
 ASSESSMENT REPORT  
 NO. 6001

DAWN CLAIMS  
 LOCATION MAP  
 LORNEX MINING CORP. LTD.

0 miles  
 0 meters 161

N.T.S. 921/6E

121°05'

SPAIST MTN.  
 6072'

50°25'

# LORNA MINING CORPORATION LTD.

## ASSAY REPORT

ONE DEPARTMENT

Date Sampled: AUGUST 11th, 1976

<sup>76-15</sup>  
PH #15 - SLUDGES

ORDER NO.	SAMPLE NO.	LOCATION/DESCRIPTION	TOTAL % CU.	OXIDIZED % CU.	TOTAL % MO.
1	20' - 30'	<i>Footage Intervals</i>	TRACE		.0015
2	30' - 40'		.005		.0015
3	40 - 50		.005		.0015
4	50 - 60		.005		.0010
5	60 - 70		.005		.0015
6	70 - 80		.005		.0010
7	80 - 90		.005		.0010
8	90 - 100		.005		.0015
9	100 - 110		TRACE		.0015
10	110 - 120		TRACE		.0015
11	120 - 130		.025		.0010
12	130 - 140		.020		.0010
13	140 - 150		.005		.0015
14	150 - 160		.005		.0015
15	160 - 170		.005		.0015
16	170 - 180		.060		.0010
17	180 - 190		.055		.0010
18	190 - 200		.070		.0010
19	200 - 210		.025		.0010
20	210 - 220		.040		.0010
21	220 - 230		.035		.0010

Date Reported: AUGUST 12th, 1976

Ch. Chemist: D. LINCOLN

*D. Lincoln*

# LORNA MINING CORPORATION LTD.

## ASSAY REPORT

76-15  
 ENGINE DEPARTMENT  
 PH #15 - SLUDGES

Date Sampled: AUGUST 11th, 1976

ORDER NO.	SAMPLE NO.	LOCATION/DESCRIPTION	TOTAL % CU.	OXIDIZED % CU.	TOTAL % MO.
1	230' - 240'		.020		.0010
2	240 - 250		.045		.0010
3	250 - 260		.390		.0015
4	260 - 270		.050		.001
5	270 - 280		.055		TRACE
6	280 - 290		.045		.0010
7	290 - 300		.040		.0010
8	300 - 310		.055		.0010
9	310 - 320		.030		.0010
10	320 - 330		.020		.0010
11	330 - 340		.030		.0010
12	340 - 350		.030		.0015
13					
14					
15					
16					
17					
18					
19					
20					
21					

Date Reported: AUGUST, 12th, 1976

Ch. Chemist: D. LINCOLN  
*D. Lincoln*

# LORNE MINING CORPORATION LTD.

## ASSAY REPORT

ENGINE DEPARTMENT

76-16

PH #16 - SLUDGES

Date Sampled: AUGUST 12th, 1976

ORDER NO.	SAMPLE NO.	LOCATION/DESCRIPTION	TOTAL % CU.	OXIDIZED % CU.	TOTAL % MO.
1	15 - 20	<i>Footage Interval</i>	TR		.001
2	20 - 30		.020		.001
3	30 - 40		.020		.001
4	40 - 50		.010		.001
5	50 - 60		.015		.001
6	60 - 70		.015		.001
7	70 - 80		.020		.001
8	80 - 90		.025		.001
9	90 - 100		.025		.001
10	100 - 110		.005		.001
11	110 - 120		.005		.001
12	120 - 130		.005		.001
13	130 - 140		.005		.001
14	140 - 150		TR		.001
15	150 - 160		.005		.001
16	160 - 170		.005		.001
17	170 - 180		.005		.001
18	180 - 190		.005		.001
19	190 - 200		.010		.002
20	200 - 210		.005		.002
21	210 - 220		.005		.002

Date Reported: AUGUST 17th, 1976

Ch. Chemist: D. LINCOLN

*D. Lincoln*

# LORNE MINING CORPORATION LTD.

## ASSAY REPORT

ENGINEERING DEPARTMENT

Date Sampled: AUGUST 12th, 1976

76-16  
PH #16 - SLUDGES

ORDER NO.	SAMPLE NO.	LOCATION/DESCRIPTION	TOTAL % CU.	OXIDIZED % CU.	TOTAL % MO.
1	220 - 230		.005		.002
2	230 - 240		.020		.003
3	240 - 250		.010		.001
4	250 - 260		.010		.002
5	260 - 270		.005		.001
6	270 - 280		.005		.002
7	280 - 290		.005		.002
8	290 - 300		.010		.002
9	300 - 310		.015		.003
10	310 - 320		.035		.014
11	320 - 330		.010		.009
12	330 - 340		.010		.005
13	340 - 350		.005		.004
14					
15					
16					
17					
18					
19					
20					
21					

Date Reported: AUGUST 17th, 1976

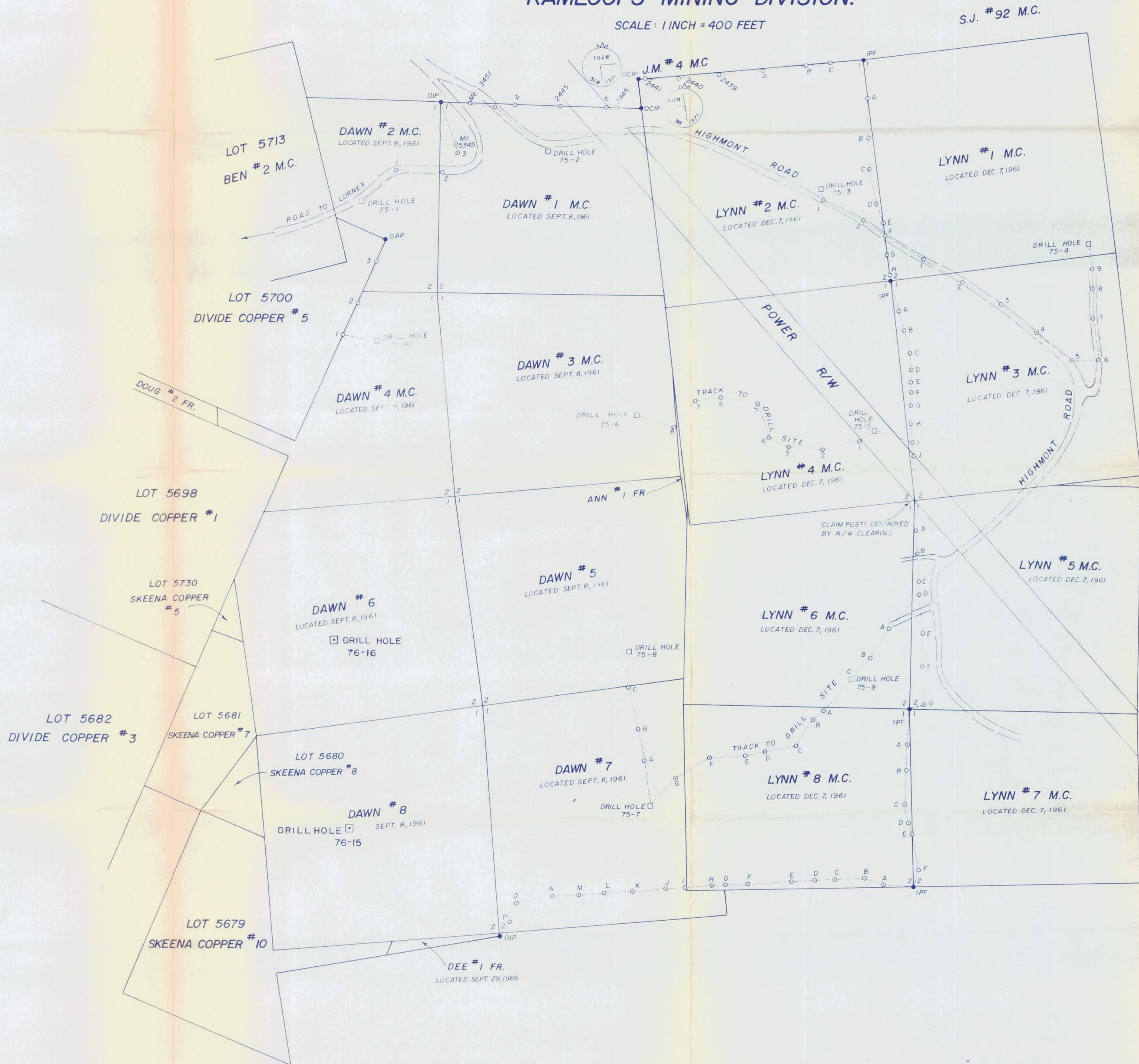
Ch. Chemist: D. LINCOLN

*D. Lincoln*



HIGHLAND VALLEY  
 COMPASS AND CHAIN SURVEY  
 OF THE LOCATION LINE OF MINERAL CLAIMS  
 BEING LYNN 1 TO 8 INCLUSIVE  
 KAMLOOPS MINING DIVISION.

SCALE: 1 INCH = 400 FEET



MINERAL RESOURCES BRANCH  
 ASSESSMENT REPORT  
 NO. 6001  
 MAP NO. #1

- LEGEND**
- OCIP DENOTES CAPPED IRON POST FOUND
  - OIP DENOTES IRON POST FOUND
  - OAP DENOTES ALUMINUM POST FOUND
  - IPF DENOTES IRON POST FOUND (NO PREVIOUS RECORD)
  - A DENOTES TRAVERSE POINT
  - DENOTES DRILL HOLE

BEARINGS ARE ASTRONOMIC AND DERIVED FROM LOCATION LINE OF DAWN 1 AND 2 FROM PLAN, McELHANNAY JOB N° 03117-0

6001

*G. Smith*  
 McELHANNAY ASSOCIATES  
 PROFESSIONAL LAND SURVEYORS  
 1200 WEST PENDER STREET  
 VANCOUVER, B.C.  
 JOB N° 13155-0

JULY, 1975.