

6013

CAM

92I/9E

1976 "CAM" GROUP MINERAL CLAIMS

ASSESSMENT REPORT

Percussion Drilling

LAFARGE CANADA LTD.
KAMLOOPS, B.C.

MINERAL RESOURCES BRANCH
ASSESSMENT REPORT

NO.

6013

ju

"CAM" GROUP MINERAL CLAIMS

TABLE OF CONTENTS

PAGE

Location of Claims	1
Means of Access	1
Work Done In 1976	1
Location of Work Done	1
Geological Survey Operator	1
Details of Drilling	2
<i>map</i> Topographic Map Showing Drill Sites	3
<i>2</i> Index Map Showing Location of "CAM" Group	4
Itemized Cost Statement of Drilling	5 - 8

fw

LOCATION

Twelve miles east of Kamloops city centre, north of the South Thompson River.

MEANS OF ACCESS

Entry to the "CAM" Group of mineral claims is by means of the quarry access and haul road commencing at the Lafarge Canada Ltd. cement plant and terminating at the present quarry workings on claim no. 6 as shown on the "Topographic Map Showing Drill Sites" (page 3).

WORK DONE IN 1976

Twenty-three percussion holes were drilled at locations located by stadia survey.

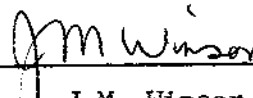
The drilling program information follows the outline given under "Drilling".

LOCATION OF WORK DONE

The percussion drill program was restricted to Cam Mineral Claims nos. 4 and 6.

GEOLOGICAL SURVEY OPERATOR

All work was done for Lafarge Canada Ltd.



J.M. Winsor

October 12, 1976

DRILLING

A. VALUATION OF WORK

PERCUSSION DRILL PROGRAM

March 24 - April 9, 1976

RATES:

Percussion Drill
Water Truck

\$ 3.25 per foot
\$45.00 per day

FOOD AND ACCOMMODATION
GROUND TRANSPORTATION

N O N E
N O N E

B. SURFACE PLAN

See attached map "Topographic Map Showing Drill Sites" (page 3)

C. DRILL DATA

Azimuth 0 Deg.
Inclination 90 Deg.
Depth of Hole see table below
Elevation of Hole see table below
Depth of Overburden see table below

HOLE NO.	DEPTH(ft.)	ELEV.(ft.)	O.B.(ft.)
1	170	1778	0
2	180	1789	0
3	230	1845	0
4	220	1826	0
5	150	1757	0
6	220	1858	0
7	220	1831	0
8	200	1795	0
9	200	1793	0
10	200	1793	0
11	200	1795	0
12	150	1756	0
13	250	1899	0
14	230	1879	0
15	200	1792	0
16	200	1789	0
17	140	1760	0
18	180	1853	0
19	200	1787	0
20	150	1756	0
21	180	1822	0
22	150	1785	0
23	200	1788	0

ju

ITEMIZED COST STATEMENT

APRIL 2, 1976 BILLING	
Percussion Drilling 2,060 ft.	\$ 6,695.00
APRIL 14, 1976 BILLING	
Percussion Drilling 2,360 ft.	\$ 7,670.00
Water Truck Rental	\$ 270.00
TOTAL	<u>\$ 14,635.00</u>

JW



Toronto Drilling Company

330 - 470 GRANVILLE STREET
VANCOUVER, B.C. V6C 1V5

ACCOUNT WITH:
Lafarge Canada Ltd.
Main St.
Vancouver, B.C. V6A 2V9

CONTRACT No. _____
INVOICE NUMBER: 3052
DATE: April 2, 1976

PROPERTY: Kamloops FROM: Mar. 24/76 TO: Mar. 31/76

HOLE NO.	DEPTH		NET FOOTAGE	HOLE SIZE	PRICE PER FT.	TOTAL
	FROM	TO				
M11 (9)	0	200				
K15 (15)	0	200				
O15 (16)	0	200				
N18 (19)	0	200				
O5 (23)	0	200				
P1 (22)	0	150				
R18 (20)	0	150				
E14 (17)	0	140				
H12 (7)	0	220				
J8 (4)	0	220				
J18 (18)	0	180				
			2060	2"	3.25	\$ 6,695.00

RECEIVED
APR 7 1976
CANADA CEMENT LAFARGE LTD.
Pacific Region

Go K.S. April 15/76

JW

VANCOUVER
 TELEPHONE 687-1884
 TELEX 04-508557
 KAMLOOPS
 TELEPHONE 374-1152
 TELEX 0480154



tonto drilling company

330 - 470 GRANVILLE STREET
 VANCOUVER, B.C. V6C 1V5

APR 10 1976
 APR 10 1976
 TONTO DRILLING COMPANY

IN ACCOUNT WITH:

Lafarge Canada Ltd.
 RR2
 Kamloops, B.C.

CONTRACT No.:

INVOICE NUMBER: 3055

DATE: April 14, 1976

PROPERTY: Kamloops

FROM: Apr. 1/76

TO: Apr. 9/76

FORM 101

DATE	HOLE NO.	DEPTH		NET FOOTAGE	HOLE SIZE	PRICE PER FT.	TOTAL
		FROM	TO				
	G16 (14)	0	230	230	2"		
	N8 (5)	0	20	20	O.B.		
		20	150	130	2"		
	Q11 (12)	0	10	10	O.B.		
		10	150	140	2"		
	L-5 (2)	0	180	180	2"		
	H-5 (1)	0	30	30	O.B.		
		30	170	140	2"		
	E-12 (6)	0	220	220	2"		
	F-9 (3)	0	230	230	2"		
	C-16 (13)	0	250	250	2"		
	L-2 (21)	0	180	180	2"		
	N-13 (10)	0	200	200	2"		
	N-11 (11)	0	200	200	2"		
	M-10 (8)	0	200	200	2"		
				200			
				2360		3.25	7,670.00
				2060			
				2000			

Handwritten signature

VANCOUVER
TELEPHONE 687-1884
TELEX 04-508557
KAMLOOPS
TELEPHONE 374-1152
TELEX 0480154



tonto drilling company

8.

330 - 470 GRANVILLE STREET
VANCOUVER, B.C. V6C 1V5

IN ACCOUNT WITH:
Lafarge Canada Ltd.

CONTRACT No.: _____

INVOICE NUMBER: 3055 (Page 2)

DATE: April 14, 1976

PROPERTY: Kamloops FROM: Apr. 1/76 TO: Apr. 9/76

FORM 103

DATE	HOLE NO.		UNIT PRICE	SUB TOTAL	TOTAL
		<u>Water Truck</u>			
		6 days - water truck	45.00		<u>270.00</u>
					<u>\$ 7,940.00</u>

To K.S. April 29/76

SCHEDULE B.

TOPOGRAPHIC AND LEGAL SURVEY OF FRACTIONAL SECTION 6
TOWNSHIP 20, RANGE 15, WEST OF THE 6TH MERIDIAN
AND ADJACENT AREAS

SCALE 1" = 200 FEET
ELEVATION TO GEODETIC DATUM - BENCH MARK USED No. 336 2 ELEVATION 1028.887
DISTANCES IN FEET AND DECIMALS THEREOF



PIT DEVELOPMENT
SEE SCHEDULE A.
● DRILL HOLE LOCATION

FOR DETAIL OF CRUSH
PLANT AREA SEE DRAWING
D. K31002.

PROPOSED LOT 2

LOT 280
GROUP 1

LOT 282
GROUP 1

LOT 265
DISTRICT LOT 265
KAMLOOPS DIVISION YALE DISTRICT
PLAN 1966

LOT 264

BC HYDRO POWER LINE

TO CEMENT PLANT

South

Thompson

River

LOT 265

LOT 265

LOT 264

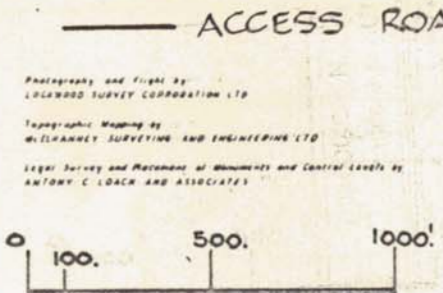
LOT A

NO.	DESCRIPTION	ELEVATION	NO.	DESCRIPTION	ELEVATION
201	CONCRETE MONUMENT AND STEEL BAR	1823.3	206	IRON POST AND STEEL BAR	1826.38
202	IRON POST AND STEEL BAR	1814.0	207	IRON POST AND STEEL BAR	1826.38
203	IRON POST AND STEEL BAR	1814.0	208	IRON POST AND STEEL BAR	1826.38
204	CONCRETE MONUMENT AND STEEL BAR	1826.0	209	IRON POST AND STEEL BAR	1826.38
205	IRON POST AND STEEL BAR	1826.0	210	IRON POST AND STEEL BAR	1826.38
206	IRON POST AND STEEL BAR	1826.0	211	IRON POST AND STEEL BAR	1826.38
207	CONCRETE MONUMENT AND STEEL BAR	1827.0	212	IRON POST AND STEEL BAR	1826.38
208	IRON POST AND STEEL BAR	1827.0	213	IRON POST AND STEEL BAR	1826.38
209	IRON POST AND STEEL BAR	1827.0	214	CONCRETE MONUMENT AND STEEL BAR	1827.0
210	IRON POST AND STEEL BAR	1827.0	215	IRON POST AND STEEL BAR	1827.0
211	IRON POST AND STEEL BAR	1827.0	216	CONCRETE MONUMENT AND STEEL BAR	1827.0
212	IRON POST AND STEEL BAR	1827.0	217	CONCRETE MONUMENT AND STEEL BAR	1827.0
213	CONCRETE MONUMENT AND STEEL BAR	1827.0	218	IRON POST AND STEEL BAR	1827.0
214	IRON POST AND STEEL BAR	1827.0	219	IRON POST AND STEEL BAR	1827.0
215	IRON POST AND STEEL BAR	1827.0	220	IRON POST AND STEEL BAR	1827.0
216	CONCRETE MONUMENT AND STEEL BAR	1827.0	221	CONCRETE MONUMENT AND STEEL BAR	1827.0
217	CONCRETE MONUMENT AND STEEL BAR	1827.0	222	CONCRETE MONUMENT AND STEEL BAR	1827.0
218	CONCRETE MONUMENT AND STEEL BAR	1827.0	223	CONCRETE MONUMENT AND STEEL BAR	1827.0
219	CONCRETE MONUMENT AND STEEL BAR	1827.0	224	CONCRETE MONUMENT AND STEEL BAR	1827.0
220	IRON POST AND STEEL BAR	1827.0	225	CONCRETE MONUMENT AND STEEL BAR	1827.0
221	CONCRETE MONUMENT AND STEEL BAR	1827.0	226	CONCRETE MONUMENT AND STEEL BAR	1827.0
222	CONCRETE MONUMENT AND STEEL BAR	1827.0	227	CONCRETE MONUMENT AND STEEL BAR	1827.0
223	CONCRETE MONUMENT AND STEEL BAR	1827.0	228	CONCRETE MONUMENT AND STEEL BAR	1827.0
224	CONCRETE MONUMENT AND STEEL BAR	1827.0	229	CONCRETE MONUMENT AND STEEL BAR	1827.0
225	CONCRETE MONUMENT AND STEEL BAR	1827.0	230	CONCRETE MONUMENT AND STEEL BAR	1827.0
226	CONCRETE MONUMENT AND STEEL BAR	1827.0	231	CONCRETE MONUMENT AND STEEL BAR	1827.0
227	CONCRETE MONUMENT AND STEEL BAR	1827.0	232	CONCRETE MONUMENT AND STEEL BAR	1827.0
228	CONCRETE MONUMENT AND STEEL BAR	1827.0	233	CONCRETE MONUMENT AND STEEL BAR	1827.0
229	CONCRETE MONUMENT AND STEEL BAR	1827.0	234	CONCRETE MONUMENT AND STEEL BAR	1827.0
230	CONCRETE MONUMENT AND STEEL BAR	1827.0	235	CONCRETE MONUMENT AND STEEL BAR	1827.0
231	CONCRETE MONUMENT AND STEEL BAR	1827.0	236	CONCRETE MONUMENT AND STEEL BAR	1827.0
232	CONCRETE MONUMENT AND STEEL BAR	1827.0	237	CONCRETE MONUMENT AND STEEL BAR	1827.0
233	CONCRETE MONUMENT AND STEEL BAR	1827.0	238	CONCRETE MONUMENT AND STEEL BAR	1827.0
234	CONCRETE MONUMENT AND STEEL BAR	1827.0	239	CONCRETE MONUMENT AND STEEL BAR	1827.0
235	CONCRETE MONUMENT AND STEEL BAR	1827.0	240	CONCRETE MONUMENT AND STEEL BAR	1827.0
236	CONCRETE MONUMENT AND STEEL BAR	1827.0	241	CONCRETE MONUMENT AND STEEL BAR	1827.0
237	CONCRETE MONUMENT AND STEEL BAR	1827.0	242	CONCRETE MONUMENT AND STEEL BAR	1827.0
238	CONCRETE MONUMENT AND STEEL BAR	1827.0	243	CONCRETE MONUMENT AND STEEL BAR	1827.0
239	CONCRETE MONUMENT AND STEEL BAR	1827.0	244	CONCRETE MONUMENT AND STEEL BAR	1827.0
240	CONCRETE MONUMENT AND STEEL BAR	1827.0	245	CONCRETE MONUMENT AND STEEL BAR	1827.0
241	CONCRETE MONUMENT AND STEEL BAR	1827.0	246	CONCRETE MONUMENT AND STEEL BAR	1827.0
242	CONCRETE MONUMENT AND STEEL BAR	1827.0	247	CONCRETE MONUMENT AND STEEL BAR	1827.0
243	CONCRETE MONUMENT AND STEEL BAR	1827.0	248	CONCRETE MONUMENT AND STEEL BAR	1827.0
244	CONCRETE MONUMENT AND STEEL BAR	1827.0	249	CONCRETE MONUMENT AND STEEL BAR	1827.0
245	CONCRETE MONUMENT AND STEEL BAR	1827.0	250	CONCRETE MONUMENT AND STEEL BAR	1827.0
246	CONCRETE MONUMENT AND STEEL BAR	1827.0	251	CONCRETE MONUMENT AND STEEL BAR	1827.0
247	CONCRETE MONUMENT AND STEEL BAR	1827.0	252	CONCRETE MONUMENT AND STEEL BAR	1827.0
248	CONCRETE MONUMENT AND STEEL BAR	1827.0	253	CONCRETE MONUMENT AND STEEL BAR	1827.0
249	CONCRETE MONUMENT AND STEEL BAR	1827.0	254	CONCRETE MONUMENT AND STEEL BAR	1827.0
250	CONCRETE MONUMENT AND STEEL BAR	1827.0	255	CONCRETE MONUMENT AND STEEL BAR	1827.0
251	CONCRETE MONUMENT AND STEEL BAR	1827.0	256	CONCRETE MONUMENT AND STEEL BAR	1827.0
252	CONCRETE MONUMENT AND STEEL BAR	1827.0	257	CONCRETE MONUMENT AND STEEL BAR	1827.0
253	CONCRETE MONUMENT AND STEEL BAR	1827.0	258	CONCRETE MONUMENT AND STEEL BAR	1827.0
254	CONCRETE MONUMENT AND STEEL BAR	1827.0	259	CONCRETE MONUMENT AND STEEL BAR	1827.0
255	CONCRETE MONUMENT AND STEEL BAR	1827.0	260	CONCRETE MONUMENT AND STEEL BAR	1827.0
256	CONCRETE MONUMENT AND STEEL BAR	1827.0	261	CONCRETE MONUMENT AND STEEL BAR	1827.0
257	CONCRETE MONUMENT AND STEEL BAR	1827.0	262	CONCRETE MONUMENT AND STEEL BAR	1827.0
258	CONCRETE MONUMENT AND STEEL BAR	1827.0	263	CONCRETE MONUMENT AND STEEL BAR	1827.0
259	CONCRETE MONUMENT AND STEEL BAR	1827.0	264	CONCRETE MONUMENT AND STEEL BAR	1827.0
260	CONCRETE MONUMENT AND STEEL BAR	1827.0	265	CONCRETE MONUMENT AND STEEL BAR	1827.0
261	CONCRETE MONUMENT AND STEEL BAR	1827.0	266	CONCRETE MONUMENT AND STEEL BAR	1827.0
262	CONCRETE MONUMENT AND STEEL BAR	1827.0	267	CONCRETE MONUMENT AND STEEL BAR	1827.0
263	CONCRETE MONUMENT AND STEEL BAR	1827.0	268	CONCRETE MONUMENT AND STEEL BAR	1827.0
264	CONCRETE MONUMENT AND STEEL BAR	1827.0	269	CONCRETE MONUMENT AND STEEL BAR	1827.0
265	CONCRETE MONUMENT AND STEEL BAR	1827.0	270	CONCRETE MONUMENT AND STEEL BAR	1827.0
266	CONCRETE MONUMENT AND STEEL BAR	1827.0	271	CONCRETE MONUMENT AND STEEL BAR	1827.0
267	CONCRETE MONUMENT AND STEEL BAR	1827.0	272	CONCRETE MONUMENT AND STEEL BAR	1827.0
268	CONCRETE MONUMENT AND STEEL BAR	1827.0	273	CONCRETE MONUMENT AND STEEL BAR	1827.0
269	CONCRETE MONUMENT AND STEEL BAR	1827.0	274	CONCRETE MONUMENT AND STEEL BAR	1827.0
270	CONCRETE MONUMENT AND STEEL BAR	1827.0	275	CONCRETE MONUMENT AND STEEL BAR	1827.0
271	CONCRETE MONUMENT AND STEEL BAR	1827.0	276	CONCRETE MONUMENT AND STEEL BAR	1827.0
272	CONCRETE MONUMENT AND STEEL BAR	1827.0	277	CONCRETE MONUMENT AND STEEL BAR	1827.0
273	CONCRETE MONUMENT AND STEEL BAR	1827.0	278	CONCRETE MONUMENT AND STEEL BAR	1827.0
274	CONCRETE MONUMENT AND STEEL BAR	1827.0	279	CONCRETE MONUMENT AND STEEL BAR	1827.0
275	CONCRETE MONUMENT AND STEEL BAR	1827.0	280	CONCRETE MONUMENT AND STEEL BAR	1827.0
276	CONCRETE MONUMENT AND STEEL BAR	1827.0	281	CONCRETE MONUMENT AND STEEL BAR	1827.0
277	CONCRETE MONUMENT AND STEEL BAR	1827.0	282	CONCRETE MONUMENT AND STEEL BAR	1827.0
278	CONCRETE MONUMENT AND STEEL BAR	1827.0	283	CONCRETE MONUMENT AND STEEL BAR	1827.0
279	CONCRETE MONUMENT AND STEEL BAR	1827.0	284	CONCRETE MONUMENT AND STEEL BAR	1827.0
280	CONCRETE MONUMENT AND STEEL BAR	1827.0	285	CONCRETE MONUMENT AND STEEL BAR	1827.0
281	CONCRETE MONUMENT AND STEEL BAR	1827.0	286	CONCRETE MONUMENT AND STEEL BAR	1827.0
282	CONCRETE MONUMENT AND STEEL BAR	1827.0	287	CONCRETE MONUMENT AND STEEL BAR	1827.0
283	CONCRETE MONUMENT AND STEEL BAR	1827.0	288	CONCRETE MONUMENT AND STEEL BAR	1827.0
284	CONCRETE MONUMENT AND STEEL BAR	1827.0	289	CONCRETE MONUMENT AND STEEL BAR	1827.0
285	CONCRETE MONUMENT AND STEEL BAR	1827.0	290	CONCRETE MONUMENT AND STEEL BAR	1827.0
286	CONCRETE MONUMENT AND STEEL BAR	1827.0	291	CONCRETE MONUMENT AND STEEL BAR	1827.0
287	CONCRETE MONUMENT AND STEEL BAR	1827.0	292	CONCRETE MONUMENT AND STEEL BAR	1827.0
288	CONCRETE MONUMENT AND STEEL BAR	1827.0	293	CONCRETE MONUMENT AND STEEL BAR	1827.0
289	CONCRETE MONUMENT AND STEEL BAR	1827.0	294	CONCRETE MONUMENT AND STEEL BAR	1827.0
290	CONCRETE MONUMENT AND STEEL BAR	1827.0	295	CONCRETE MONUMENT AND STEEL BAR	1827.0
291	CONCRETE MONUMENT AND STEEL BAR	1827.0	296	CONCRETE MONUMENT AND STEEL BAR	1827.0
292	CONCRETE MONUMENT AND STEEL BAR	1827.0	297	CONCRETE MONUMENT AND STEEL BAR	1827.0
293	CONCRETE MONUMENT AND STEEL BAR	1827.0	298	CONCRETE MONUMENT AND STEEL BAR	1827.0
294	CONCRETE MONUMENT AND STEEL BAR	1827.0	299	CONCRETE MONUMENT AND STEEL BAR	1827.0
295	CONCRETE MONUMENT AND STEEL BAR	1827.0	300	CONCRETE MONUMENT AND STEEL BAR	1827.0

THAT PART OF PART OF DISTRICT LOT TWO HUNDRED AND SIXTY-FIVE (26)
KAMLOOPS DIVISION YALE DISTRICT,
EXCEPT PLANS A514, A304, A601 AND 16660.
SHOWN OUTLINED IN RED UPON A SUB-DIVISION PLAN OF THE SAID PART
OF THE SAID DISTRICT LOT 265, PREPARED BY A W.M. WILLIAM, B.C.L.S.
A SURVEY COMPLETED BY HIM ON THE 2ND JULY, 1968, AND MARKED A
LOT A UPON THE SAID SUB-DIVISION PLAN.

MINERAL RESOURCES BRANCH
ASSESSMENT REPORT
NO. 6013

Map
1



6013

fw

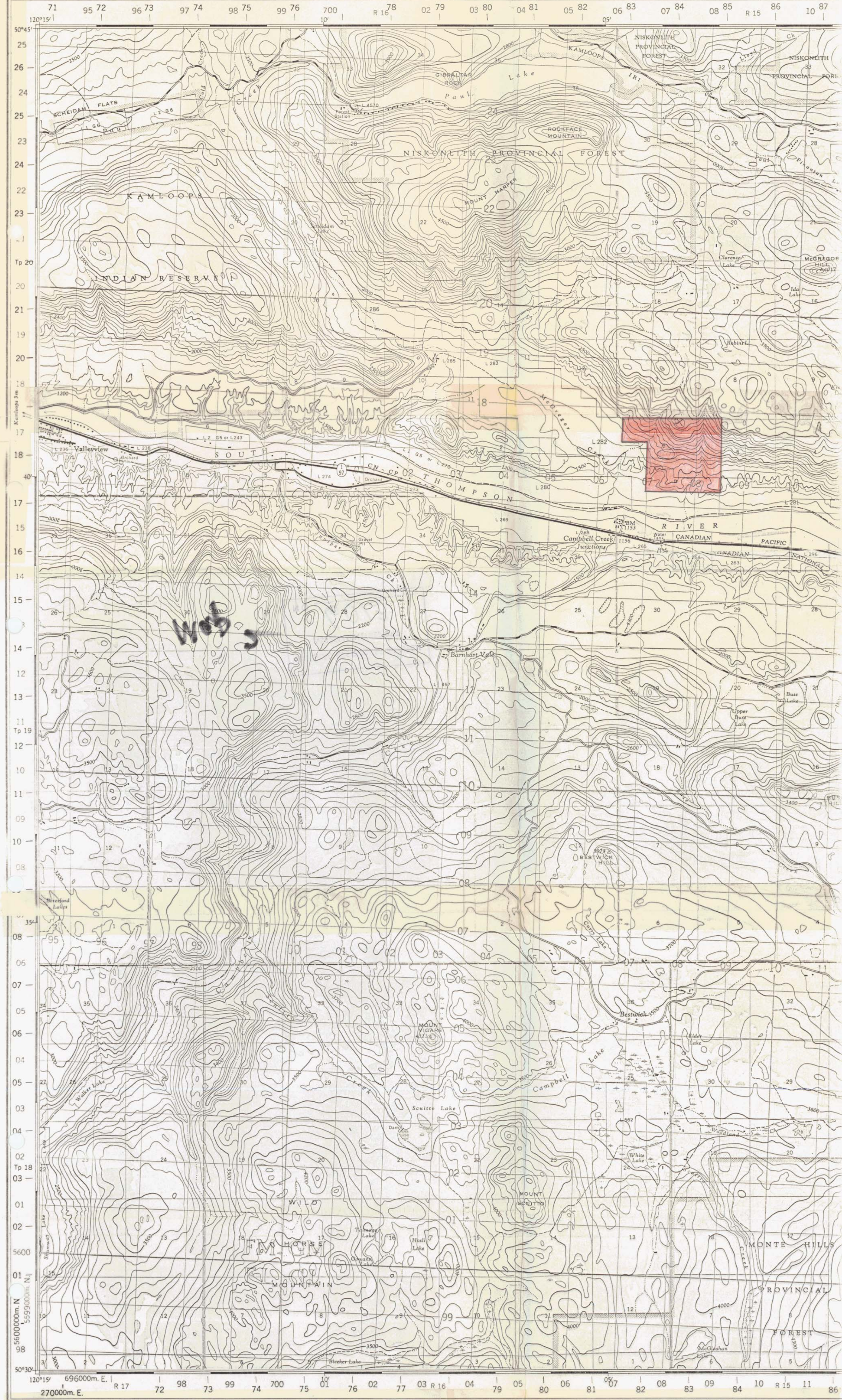


CANADA

EDITION 2

1:50,000

92 7/9 E



Produced and printed by the SURVEYS AND MAPPING BRANCH, DEPARTMENT OF MINES AND TECHNICAL SURVEYS, 1960, from air photographs taken in 1951 and 1954.

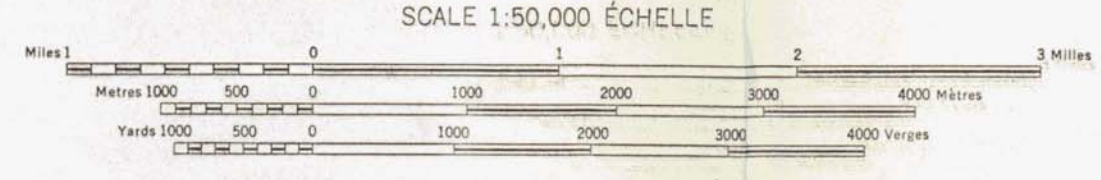
Établi et imprimé par la BRANCH DE LA CARTOGRAPHIE, MINES ET SURVEYS TECHNIQUES en aériennes prises en 1951 et 1954.

KAMLOOPS

KAMLOOPS DISTRICT
BRITISH COLUMBIA
WEST OF SIXTH MERIDIAN - OUEST DU SIXIÈME MÉRIDIDIEN

SCALE 1:50,000 ÉCHELLE

Roads:	Routes:
hard surface, all weather	route pavée, toute saison
hard surface, all weather	route pavée, toute saison
loose surface, all weather	route de gravier, toute saison
loose surface, dry weather	route de gravier, période sèche
cart track	route de terre
trail or portage	sentier ou portage
normal gauge, single track	chemin de fer unique (écartement normal)
control point, with elevation	point géodésique avec cote
Bench mark, with elevation	repère de nivellement avec cote



CONTOUR INTERVAL 100 FEET
Elevations in Feet above Mean Sea Level
North American Datum 1927
Transverse Mercator Projection

ÉQUIDISTANCE DES COURBES: 100 PIEDS
Élévations en pieds au-dessus du niveau moyen de la mer
Réseau géodésique nord-américain unifié (1927)
Projection transverse de Mercator

MAGNETIC DECLINATION 23° 44' EAST
AT CENTRE OF MAP 1960
Annual change (decreasing) 3.5'

DÉCLINAISON MAGNÉTIQUE AU CENTRE
DE LA FEUILLE EN 1960: 23° 44' EST
Variation annuelle (décroissante) 3.5'

Building	Bâtiment	Barn
School	École	Post Office
Church	Eglise	Cemetery
Mine or Open cut	Mine ou fosse à ciel ouvert	
Lighthouse	Phare	
Power transmission line	Ligne de transport d'énergie	
River with bridge	Rivière avec pont	
Stream, intermittent or dry	Cours d'eau intermittent, ou à sec	
Lake, intermittent, indefinite	Lac intermittent, rive imprécise	
Marsh or Swamp	Marais ou marécage	
Depression contours	Courbes de cuvette	

MMP
2
6013

MINERAL RESOURCES BRANCH
ASSESSMENT REPORT
NO. 6013

JW