

6023

PERCUSSION DRILLING REPORT

ON

THE 82E/11 CA GROUP

OF

VESTOR EXPLORATION LTD.

AT

CARMI, B.C.

BY

N.B. VOLLO, P.ENG.

SEPT. 30, 1976

82E/11E

MINERAL RESOURCES BRANCH  
ASSESSMENT REPORT

NO. 6023

PERCUSSION DRILLING REPORT

PROPERTY

82E/11 CA Group  
Carmi, B.C.

CLAIMS

CA-3 to CA-5 inc. , Rec. Nos. 467-469 inc.

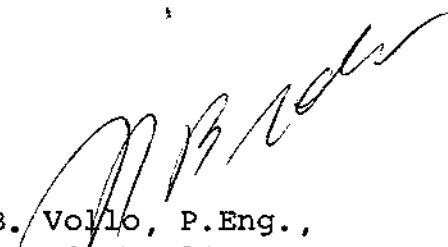
COST

CA-3 - 600' (180 meters) at \$2.75/ft ---	\$1750
60 assays MoS <sub>2</sub> at \$5.38 -----	323
(Holes P-70, P-71)	\$2073
CA-4 - 1800' (540 meters) at \$2.75/ft --	\$4950
180 assays MoS <sub>2</sub> at \$5.38 -----	968
(Holes P-60 to P-65 inc.)	\$5918
CA-5 - 900' (270 meters) at \$2.75/ft. --	\$2475
Assays MoS <sub>2</sub> , 90 at \$5.38 -----	484
(Holes P-55 to P-57 inc.)	\$2959

Contractor - Al Miller Percussion Drilling Ltd.  
Assayer - Kamloops Research and Assay Laboratories  
Ltd.

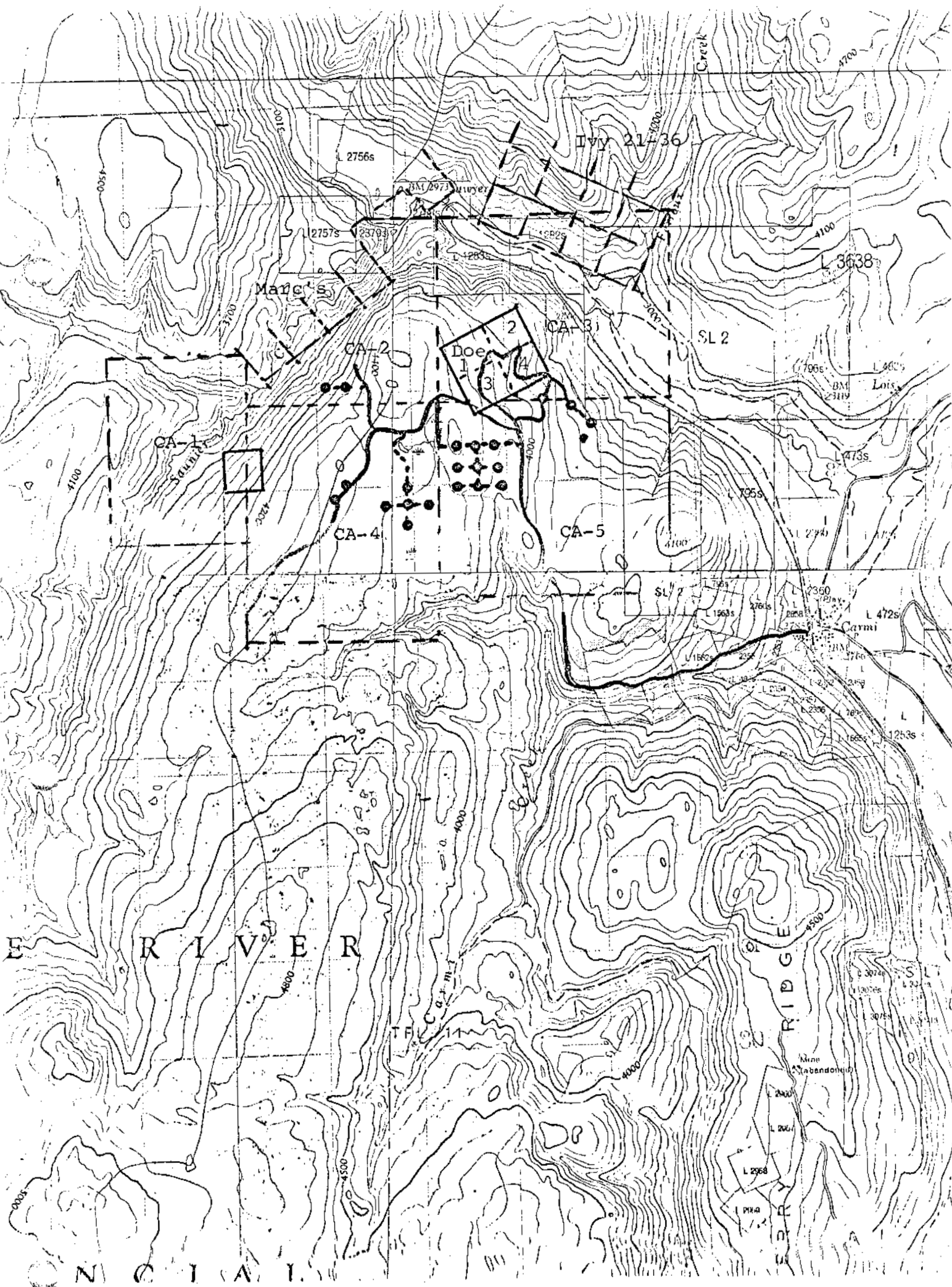
CONTENTS

Drill logs, Holes P-55 to 57 inc., P-60 to  
P-65 inc., P-70, P-71.  
Drill Plan, 1:5000, in pocket  
Location Map, 1:50,000.

  
N.B. Vollo, P.Eng.,  
Sept. 30th, 1976

#1 CLAIM LOCATION MAP

IN  
POCKET



CRAIGMONT MINES LIMITED  
 LOCATION MAP  
 82E/11 CA GROUP  
 1:50,000  
 Sept. 30th, 1976

MINERAL RESOURCES BRANCH  
 ASSESSMENT REPORT  
 No. 6023

# PERCUSSION DRILL RECORD

DEPTH	DIP	BEARING AST.
COLLAR	-90	—

PROPERTY CIA Group CLAIM MY 11  
 LATITUDE 9040 N STARTED 7 Sept / 76  
 DEPARTURE 9598 E FINISHED 7 Sept / 76  
 ELEVATION 1315 TOTAL LENGTH 90 meters

LOGGED BY JFB  
 CORE SIZE 2 1/8"  
 SECTION \_\_\_\_\_  
 HOLE NO. P-63

Meters	DESCRIPTION	MINERALIZATION	Sample	From	To	Length	Copper %	MoS <sub>2</sub> %	Gold Oz.	Silver Oz.
0-3	Overburden		2268	3	6	3		2.001		
			2289	6	9	3		.001		
3-9	Granodiorite heavy chlorite, biotite epidote		2290	9	12	3		2.001		
			2291	12	15	3		.005		
9-12	qtz monzonite or porphyrite work large chips		2292	15	18	3		.002		
			2293	18	21	3		.001		
12-75	Granodiorite chlorite biotite epidote		2294	21	24	3		.008		
			2295	24	27	3		.001		
	minor pyrite		2296	27	30	3		2.001		
			2297	30	33	3		.002		
	30-33 occasional green Mn (Fe)		2298	33	36	3		.002		
			2299	36	39	3		.002		
	42-45 all fines, no screen product		2300	39	42	3		.002		
			2080	42	45	3		.003		
	63-66 very fine grained pulp.		2081	45	48	3		.002		
			2082	48	51	3		.002		
	69-72 light coloured pulp with		2083	51	54	3		2.001		
	moderate py. (qtz monzonite?)		2084	54	57	3		.002		
			2085	57	60	3		.003		
75-84	No Screen Product - qtz diorite very hard		2086	60	63	3		2.001		
			2087	63	66	3		.002		
	mainly fine qtz grains		2088	66	69	3		.002		
			2089	69	72	3		.003		
84-90	Granodiorite same as 12-75		2090	72	75	3		2.001		
			2091	75	78	3		.004		
			2092	78	81	3		.002		
			2093	81	84	3		.002		
			2094	84	87	3		.004		
			2095	87	90	3		.005		

# PERCUSSION LOG RECORD

DEPTH	DIP	BEARING AST.
COLLAR	-90	

PROPERTY CFA Group CLAIM Mary 020  
 LATITUDE 9130N STARTED 2 Sept 176  
 DEPARTURE 10380E FINISHED 2 Sept 176  
 ELEVATION 1255 TOTAL LENGTH 90 meters

LOGGED BY JFB  
 CORE SIZE 2 1/2"  
 SECTION \_\_\_\_\_  
 HOLE NO. P-55

Meters	DESCRIPTION	MINERALIZATION	Sample	From	To	Length	Copper %	MoS <sub>2</sub> %	Gold Oz.	Silver Oz.
0-2	Overburden		1911	3	6	3		.003		
			1912	6	9	3		.002		
			1913	9	12	3		.003		
2-27	Granodiorite		1914	12	15	3		.002		
	weathered chips common to 6 meters		1915	15	18	3		.003		
	epidote chlorite / biotite throughout		1916	18	21	3		.001		
			1917	21	24	3		.002		
			1918	24	27	3		.001		
27-33	Qtz Monzonite - numerous chips		1919	27	30	3		2.001		
	have pink-orange cast.		1920	30	33	3		2.001		
			1921	33	36	3		.001		
			1922	36	39	3		.003		
	27-30 pyrite		1923	39	42	3		.002		
			1924	42	45	3		.003		
33-39	Granodiorite similar 3-27 with heavy chlorite		1925	45	48	3		.005		
			1926	48	51	3		.004		
39-48	Qtz Monzonite 45-48 transition zone		1927	51	54	3		.002		
			1928	54	57	3		.001		
48-57	Granodiorite 54-57 transition zone		1929	57	60	3		2.001		
			1930	60	63	3		.001		
			1931	63	66	3		2.001		
57-72	Qtz Monzonite		1932	66	69	3		.004		
	60-72 abundant pink-orange		1933	69	72	3		2.001		
	quartz		1934	72	75	3		.004		
			1935	75	78	3		.002		
			1936	78	81	3		.004		
72-90	Granodiorite		1937	81	84	3		.003		
	very fine ground pulp.		1938	84	87	3		.005		
	cutless upst fault 72-75 meters.		1939	87	90	3		.003		

# PERCUSSION DRILL RECORD

DEPTH	DIP	BEARING AST.
COLLAR	-90	

PROPERTY CIA Group CLAIM Mary 020  
 LATITUDE 93.35 N STARTED 2 Sept 76  
 DEPARTURE 10395 E FINISHED 2 Sept 76  
 ELEVATION 1265 TOTAL LENGTH 90 meters

LOGGED BY JFB  
 CORE SIZE 2 1/8"  
 SECTION \_\_\_\_\_  
 HOLE NO. P-56

Meters	DESCRIPTION	MINERALIZATION	Sample	From	To	Length	Copper %	Mo S. %	Gold Oz.	Silver Oz.
0 - 2	Overburden		1940	3	6	3		.003		
			1941	6	9	3		.004		
2 - 18	Granodiorite		1942	9	12	3		.002		
			1943	12	15	3		.005		
	3-6 weathered chips common		1944	15	18	3		.007		
			1945	18	21	3		.016		
	epidote chlorite & biotite throughout.		1946	21	24	3		.014		
			1947	24	27	3		.015		
	py 9-15		1948	27	30	3		.009		
			1949	30	33	3		.003		
18 - 21	Qtz Monzonite occasional green py		1950	33	36	3		.005		
	abundant pink orange grains.		1951	36	39	3		.003		
			1952	39	42	3		.006		
			1953	42	45	3		.007		
21 - 90	Granodiorite same as above		1954	45	48	3		.004		
			1955	48	51	3		.004		
	24 - 30, heavy chlorite py common		1956	51	54	3		.005		
			1957	54	57	3		.005		
	Drillers report fault making		1958	57	60	3		.003		
	water at 75 to 78 meters		1959	60	63	3		.004		
			1960	63	66	3		.004		
			1961	66	69	3		.007		
	minor py in screened fraction		1962	69	72	3		.007		
	rock type appears to be		1963	72	75	3		.007		
	quite uniform - slight increase		1964	75	78	3		.008		
	in feldspar towards bottom of		1965	78	81	3		.007		
	hole.		1966	81	84	3		.004		
			1967	84	87	3		.003		
			1968	87	90	3		.005		

# PERCUSSION DRILL RECORD

DEPTH	DIP	BEARING AST.
COLLAR	-90	—

PROPERTY CIA Group  
 LATITUDE 9570 N  
 DEPARTURE 10395 E  
 ELEVATION 1280

CLAIM Long 1 Fr.  
 STARTED 3 Sept 176  
 FINISHED 3 Sept 176  
 TOTAL LENGTH 90 meters.

LOGGED BY JFB  
 CORE SIZE 2 1/8"  
 SECTION \_\_\_\_\_  
 HOLE NO. P-57

Meters	DESCRIPTION	MINERALIZATION	Sample	From	To	Length	Copper %	Mo %	Gold Oz.	Silver Oz.
0 - 57	Granodiorite  weathered chips common to 3 meters  epidote, chlorite alteration throughout.  only trace py to 24 Very little py 42 to 57 51-54 heavy chlorite		1969	0	3	3		.001		
			1970	3	6	3		.003		
			1971	6	9	3		.002		
			1972	9	12	3		.001		
			1973	12	15	3		.002		
			1974	15	18	3		.001		
			1975	18	21	3		.002		
			1976	21	24	3		.001		
			1977	24	27	3		.007		
			1978	27	30	3		.008		
57 - 63	Qtz Monzonite - Granodiorite  Light coloured		1979	30	33	3		.001		
			1980	33	36	3		.002		
			1981	36	39	3		.002		
			1982	39	42	3		.002		
			1983	42	45	3		.006		
			1984	45	48	3		.003		
			1985	48	51	3		.007		
			1986	51	54	3		.003		
			1987	54	57	3		.003		
			1988	57	60	3		.003		
63 - 69	Qtz Monzonite porphyritic?  abundant muscovite		1989	60	63	3		.003		
			1990	63	66	3		.003		
			1991	66	69	3		.005		
			1992	69	72	3		.001		
69 - 81	Qtz Monzonite minor muscovite  Transition zone 75 to 81		1993	72	75	3		.003		
			1994	75	78	3		.004		
			1995	78	81	3		.003		
			1996	81	84	3		.004		
81 - 90	Granodiorite  78-81 fines dark green chlorite 81-87 ca 78-81 except  abundant sericite in fines.		1997	84	87	3		.006		
			1998	87	90	3		.005		

# PERCUSSION DRILL RECORD

DEPTH	DIP	BEARING AST.
COLLAR	-90	—

PROPERTY CIA GROUP CLAIM MY 11  
 LATITUDE 9232N STARTED 7 Sept 176  
 DEPARTURE 9600E FINISHED 7 Sept 176  
 ELEVATION 1318 TOTAL LENGTH 90 meters

LOGGED BY JFB  
 CORE SIZE 2 1/2"  
 SECTION \_\_\_\_\_  
 HOLE NO. P-60

Meters	DESCRIPTION	MINERALIZATION	Sample	From	To	Length	Copper %	Mo S <sub>2</sub> %	Gold Oz.	Silver Oz.
0-2	Overburden		2046	2	6	3		.002		
			2047	6	9	3		.003		
2-39	Granodiorite chlorite, biotite, feldspar		2048	9	12	3		.003		
			2049	12	15	3		.002		
			2050	15	18	3		.002		
	minor pyrite		2251	18	21	3		2.001		
	2-6 very fine weathered chips		2252	21	24	3		.003		
			2253	24	27	3		.001		
	24-39 heavy chlorite		2254	27	30	3		.001		
			2255	30	33	3		2.001		
39-45	qtz Monzonite contaminated with granodiorite fragments		2256	33	36	3		.001		
			2257	36	39	3		2.001		
			2258	39	42	3		.003		
			2259	42	45	3		2.001		
			2260	45	48	3		2.001		
45-57	Granodiorite same as 2-39 with minor decrease in qtz & pink feldspar grains due to screening		2261	48	51	3		.001		
			2262	51	54	3		.014		
			2263	54	57	3		.010		
			2264	57	60	3		.002		
			2265	60	63	3		.001		
57-60	Granodiorite - qtz Monzonite mixture		2266	63	66	3		.002		
			2267	66	69	3		2.001		
			2268	69	72	3		2.001		
60-90	Granodiorite - Same as previous section		2269	72	75	3		.001		
			2270	75	78	3		2.001		
			2271	78	81	3		.002		
	51-84 fractured ground occasional big chips.		2272	81	84	3		.001		
			2273	84	87	3		.002		
			2274	87	90	3		2.001		
	84-90 Very fine grained pulp.									



# PERCUSSION DRILL RECORD

DEPTH	DIP	BEARING AST.
COLLAR	-90	—

PROPERTY CIA GROUP CLAIM MY 13  
 LATITUDE 90 11 N STARTED 5 Sept / 76  
 DEPARTURE 9409 E FINISHED 5 Sept / 76  
 ELEVATION 1318 TOTAL LENGTH 90 meters

LOGGED BY JFB  
 CORE SIZE 2 1/8  
 SECTION \_\_\_\_\_  
 HOLE NO. P-61

Meters	DESCRIPTION	MINERALIZATION	Sample	From	To	Length	Copper %	Mo S <sub>2</sub> %	Gold Oz.	Silver Oz.
0-2	Overburden		2001	3	6	3		.002		
			2002	6	9	3		.002		
2-90	Granodiorite throughout		2003	9	12	3		.003		
			2004	12	15	3		.012		
	3-6 very few weathered clays		2005	15	18	3		.006		
			2006	18	21	3		.005		
	12-30 feldspar has greenish		2007	21	24	3		.002		
	cut due to sericitization?		2008	24	27	3		.004		
			2009	27	30	3		.003		
			2010	30	33	3		.003		
	30-36 badly contaminated by magnetite		2011	33	36	3		.004		
	with quartz		2012	36	39	3		.007		
	* 39-48 numerous "scaly" gray particles - Mo		2013	39	42	3		.007		
			2014	42	45	3		.005		
			2015	45	48	3		.002		
	54-75 typical epidote, chlorite		2016	48	51	3		.004		
	biotite alteration - minor quartz -		2017	51	54	3		.002		
	gray "scaly" subangular particles throughout.		2018	54	57	3		.003		
	78-84 heavy biotite dark poly.		2019	57	60	3		.004		
	occasional scaly subangular particles		2020	60	63	3		.001		
	under high power looks like fine		2021	63	66	3		.002		
	sulphides - Mo?		2022	66	69	3		.001		
			2023	69	72	3		.005		
			2024	72	75	3		.003		
			2025	75	78	3		.004		
			2026	78	81	3		.005		
			2027	81	84	3		.003		
			2028	84	87	3		.004		
			2029	87	90	3		.002		

# PERCUSSION DRILL RECORD

DEPTH	DIP	BEARING AST.
COLLAR	-90	---

PROPERTY CA GROUP CLAIM MY 12  
 LATITUDE 8830 N STARTED 4 Sept / 76  
 DEPARTURE 9589 E FINISHED 5 Sept / 76  
 ELEVATION 1308 TOTAL LENGTH 90 meters

LOGGED BY JFB  
 CORE SIZE 2 1/8"  
 SECTION \_\_\_\_\_  
 HOLE NO. P-62

Meters	DESCRIPTION	MINERALIZATION	Sample	From	To	Length	Copper %	Mo S <sub>2</sub> %	Gold Oz.	Silver Oz.
0 - 1	Overburden		15258	0	3	3		2.001		
			15259	3	6	3		.001		
			15260	6	9	3		.001		
1 - 24	Granodiorite - biotite chlorite micaceous weathered chips up to 9 meters		15261	9	12	3		2.001		
			15262	12	15	3		2.001		
			15263	15	18	3		.001		
			15264	18	21	3		.001		
24 - 30	Qtz Monzonite biotite throughout		15265	21	24	3		.001		
30 - 39	Granodiorite same as 1-24 with sericite		15266	24	27	3		.001		
			15267	27	30	3	0	2.001		
			15268	30	33	3		2.001		
			15269	33	36	3		.003		
			15270	36	39	3		.002		
39 - 42	Qtz Monzonite - numerous Granodiorite fragments		15271	39	42	3		.001		
			15272	42	45	3		.001		
			15273	45	48	3		2.001		
			15274	48	51	3		.001		
42 - 60	Granodiorite same as before		15275	51	54	3		.001		
			15276	54	57	3		.002		
60 - 69	Qtz Monzonite 60-63, 66-69 Transition zone		15277	57	60	3		.001		
			15278	60	63	3		2.001		
			15279	63	66	3		2.001		
			15280	66	69	3		2.001		
69 - 90	Granodiorite very fine grained pulp. 81-90 appears to have more biotite & sericite however this may be due to finer grained fraction being saved		15281	69	72	3		2.001		
			15282	72	75	3		2.001		
			15283	75	78	3		.001		
			15284	78	81	3		.001		
			15285	81	84	3		2.001		
			15286	84	87	3		.001		
			15287	87	90	3		2.001		

# PERCUSSION DRILL RECORD

DEPTH	DIP	BEARING AST.
COLLAR	-90	—

PROPERTY ..... C.A. Group ..... CLAIM ..... MY 11 .....  
 LATITUDE ..... 9030 N ..... STARTED ..... 5 Sept 1976 .....  
 DEPARTURE ..... 9705 E ..... FINISHED ..... 5 Sept 1976 .....  
 ELEVATION ..... 1305 ..... TOTAL LENGTH ..... 90 meters .....

LOGGED BY ..... JFB .....  
 CORE SIZE ..... 2 1/8" .....  
 SECTION .....  
 HOLE NO. ..... P-64 .....

Meters	DESCRIPTION	MINERALIZATION	Sample	From	To	Length	Copper %	Mo %	Gold Oz.	Silver Oz.
0-3	overburden		15288	3	6	3		.003		
			15289	6	9	3		.005		
3-21	Granodiorite - chlorite biotite epidote		15290	9	12	3		.003		
	12-15 very dark pulp - increase in mafic?		15291	12	15	3		.005		
			15292	15	18	3		.002		
			15293	18	21	3		.003		
21-30	Qtz Monzonite 27-30 Transition zone		15294	21	24	3		.001		
	pyrite throughout - 21 to 24 T-Mo		15295	24	27	3		.002		
			15296	27	30	3		.002		
			15297	30	33	3		.001		
30-90	Granodiorite same as 3-21		15298	33	36	3		.002		
	30-33 small sample - very dark heavy sulphides		15299	36	39	3		.001		
	more pyrite throughout		15300	39	42	3		.003		
			2030	42	45	3		.001		
	45-51 small, dark fine grained sample heavy sulphides		2031	45	48	3		2.001		
			2032	48	51	3		.003		
			2033	51	54	3		.002		
	63-66 fine grained sample abundant py.		2034	54	57	3		.001		
			2035	57	60	3		.003		
	87-90 screened product loss		2036	60	63	3		.002		
	pinkish coat several fine qtz		2037	63	66	3		.003		
	crystals noted		2038	66	69	3		.002		
			2039	69	72	3		.002		
			2040	72	75	3		.001		
			2041	75	78	3		.003		
			2042	78	81	3		.002		
			2043	81	84	3		.002		
			2044	84	87	3		.001		
			2045	87	90	3		2.001		



# PERCUSSION DRILL RECORD

DEPTH	DIP	BEARING AST.
COLLAR	-90	---

PROPERTY ..... CA GROUP ..... CLAIM 1VY 6FR.  
 LATITUDE ..... 11065N ..... STARTED 11 Sept 176  
 DEPARTURE ..... 10980E ..... FINISHED 11 Sept 176  
 ELEVATION ..... 1178 ..... TOTAL LENGTH ..... 90 Meters

LOGGED BY JFB  
 CORE SIZE 2 1/8  
 SECTION .....  
 HOLE NO. P-70

Meters	DESCRIPTION	MINERALIZATION	Sample	From	To	Length	Copper %	MoS <sub>2</sub> %	Gold Oz.	Silver Oz.
0-1	Overburden		2186	0	3	3		.002		
			2187	3	6	3		.001		
1-3	Granodiorite chlorite epidote schist		2188	6	9	3		.001		
			2189	9	12	3		.020		
3-9	Qtz Monzonite 6-9 transition zone		2190	12	15	3		.007		
	Very large chips		2191	15	18	3		.008		
			2192	18	21	3		.002		
			2193	21	24	3		2.001		
9-90	Granodiorite - general appearance		2194	24	27	3		.002		
	of Granodiorite to end of hole		2195	27	30	3		.004		
	attraction as 1-3		2196	30	33	3		.005		
			2197	33	36	3		1.001		
			2198	36	39	3		.009		
			2199	39	42	3		.008		
	24-33 heavy chlorite		2200	42	45	3		.005		
			2201	45	48	3		.004		
	36-39 some Qtz monzonite		2202	48	51	3		.001		
			2203	51	54	3		.002		
	57-63 very dark pulp abundant muscovite		2204	54	57	3		.001		
			2205	57	60	3		.004		
	78-81 heavy muscovite		2206	60	63	3		.005		
			2207	63	66	3		.005		
	81-84 very fine white pulp		2208	66	69	3		.007		
	minor pyrite throughout		2209	69	72	3		.011		
	sub angular fragments of		2210	72	75	3		.052		
	sinaky Qtz common		2211	75	78	3		.054		
			2212	78	81	3		.080		
			2213	81	84	3		.064		
			2214	84	87	3		.040		
			2215	87	90	3		0.104		

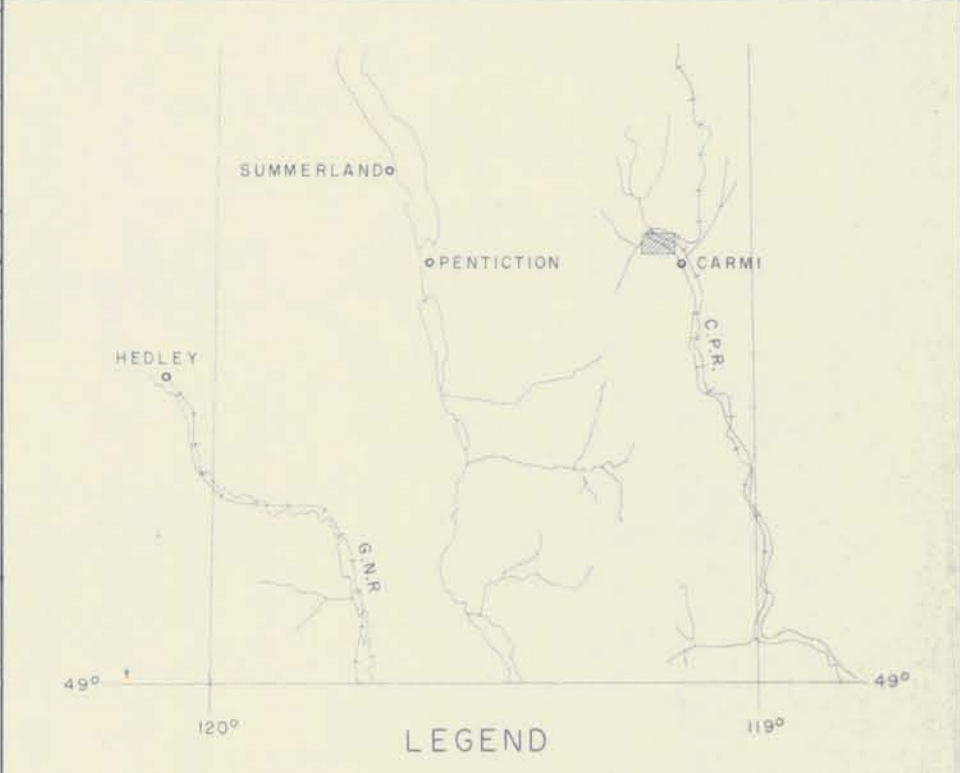
# PERCUSSION DRILL RECORD

DEPTH	DIP	BEARING AST.
COLLAR	-90	—

PROPERTY CA Group CLAIM MARY OIL  
 LATITUDE 10.000 N STARTED 11 Sept / 76  
 DEPARTURE 11208 E FINISHED 11 Sept / 76  
 ELEVATION 1125 TOTAL LENGTH 90 meters

LOGGED BY JFB  
 CORE SIZE 2 1/8  
 SECTION \_\_\_\_\_  
 HOLE NO. P-71

Meters	DESCRIPTION	MINERALIZATION	Sample	From	To	Length	Copper %	MoS <sub>2</sub> %	Gold Oz.	Silver Oz.
0-2	Overburden		2216	3	6	3		2.001		
			2217	6	9	3		.015		
2-90	Granodiorite - chlorite, epidote, biotite		2218	9	12	3		.004		
	- very little change in appearance		2219	12	15	3		.002		
	becomes more siliceous towards		2220	15	18	3		.005		
	bottom of hole - however finer fragmentation		2221	18	21	3		.003		
	maybe freeing more mafic		2222	21	24	3		.005		
	2-6 some weathered fragments		2223	24	27	3		.003		
	screened fraction looks like		2224	27	30	3		.013		
	qtz, chlorite 36-39, 54-57, 63-66		2225	30	33	3		.001		
	75-90		2226	33	36	3		.001		
	48-51 very dark pulp		2227	36	39	3		.002		
	51-54 some qtz monzonite present		2228	39	42	3		.002		
	54-60 abundant sericite		2229	42	45	3		.001		
	66-69 very dark pulp - chlorite		2230	45	48	3		.005		
	75-90 muscovite breaks common		2231	48	51	3		.003		
	Minor pyrite throughout		2232	51	54	3		.001		
			2233	54	57	3		.009		
			2234	57	60	3		.016		
			2235	60	63	3		.070		
			2236	63	66	3		.008		
			2237	66	69	3		.013		
			2238	69	72	3		.012		
			2239	72	75	3		.009		
			2240	75	78	3		.024		
			2241	78	81	3		.034		
			2242	81	84	3		.014		
			2243	84	87	3		.009		
			2244	87	90	3		.030		



CRAIGMONT MINES LIMITED  
KAMLOOPS, B.C.

MINERAL RESOURCES BRANCH  
ASSESSMENT REPORT 82 E/II CA GROUP

NO. **6023**

MAP NO. **#1**

Scale: 1:5,000 Date: \_\_\_\_\_ Approved by: \_\_\_\_\_

**6023**