

6025

SUMAC MINES LIMITED

DIAMOND DRILLING AT KUTCHO CREEK 1976

SMRB

KUTCHO GROUP

JULY-AUGUST

104 I / 1W

MINERAL RESOURCES BRANCH
ASSESSMENT REPORT

NO. 6025

T. Redden
20.7.76

Introduction

This report contains the logs and costs of some diamond drilling in the Kutcho Creek area of northern British Columbia (NTS 104I/1W) done in the summer of 1976.

The drilling, BQ Wireline, was done under contract by Arctic Diamond Drilling Ltd. of Whitehorse, Y.T.

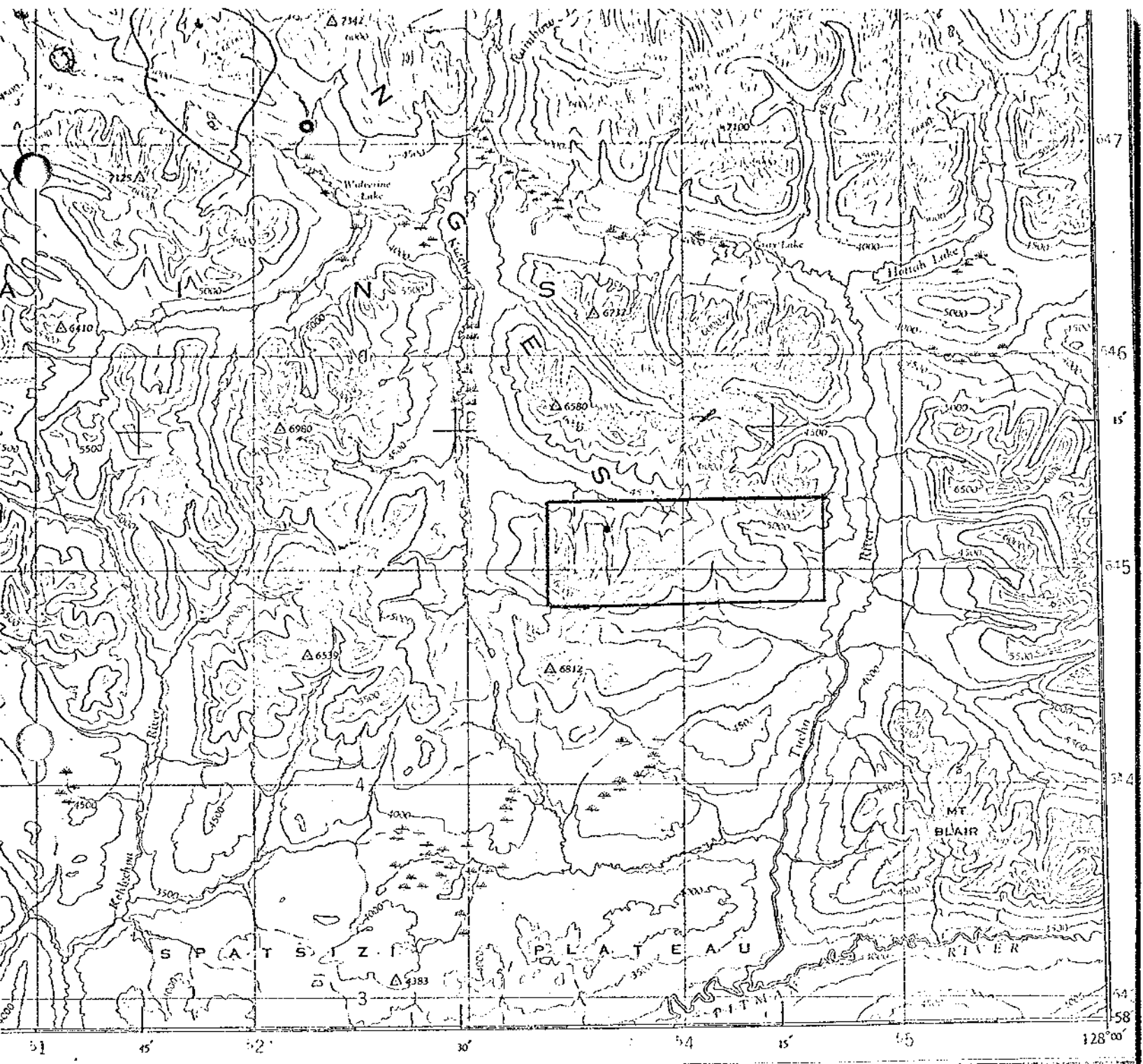
The costs tabulated later are for the entire program and are pro-rated on a footage basis for assessment work purposes.

The core is stored on the property at the camp site.

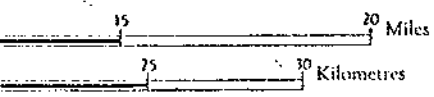
Direct Project Costs Kutcho 1976

a/b	T.C.Scott	June 15 - Sept.15	81 days	@\$57.71	4,675
	W. Mennie	" "	81 "	@\$50.32	4,026
	A. Jordan	June 22 - Sept. 8	58 "	@\$56.88	3,300
	G. Jordan	" "	54 "	@\$36.37	1,965
	K. Hashimoto	June 15 - Sept.15	7 "	@\$106.81	748
					<u>14,714</u>
c	Food and supplies				5,046
e	Fixed wing support				15,358
	Helicopter support				40,085
h	Report preparation				200
i	Diamond drilling contract cost				135,666
j	Fuel				<u>10,756</u>
	TOTAL				<u>221,825</u>
	Footage drilled				10,692
	Cost per foot				<u>\$20.75</u>

T. Raylan
20.7.76



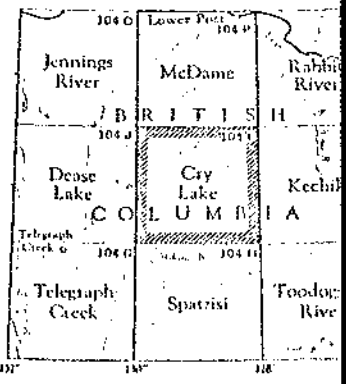
Contour interval 500 Feet.
 All Elevations in Feet above Mean Sea Level.



REFERENCE

Transpiration Station	△	Spot Elevation, in feet	257
Contours, Elevation	500	Wooded Areas	
" Depression	500	Swamp or Marsh	
Approximate			
Stream, Incomitant		W.L. 241	
Falls		Forty O.	Mud Sand
Archhome, on Land		Navigation Light	
Mean Electric Power Line		On Water in Feet 250	①

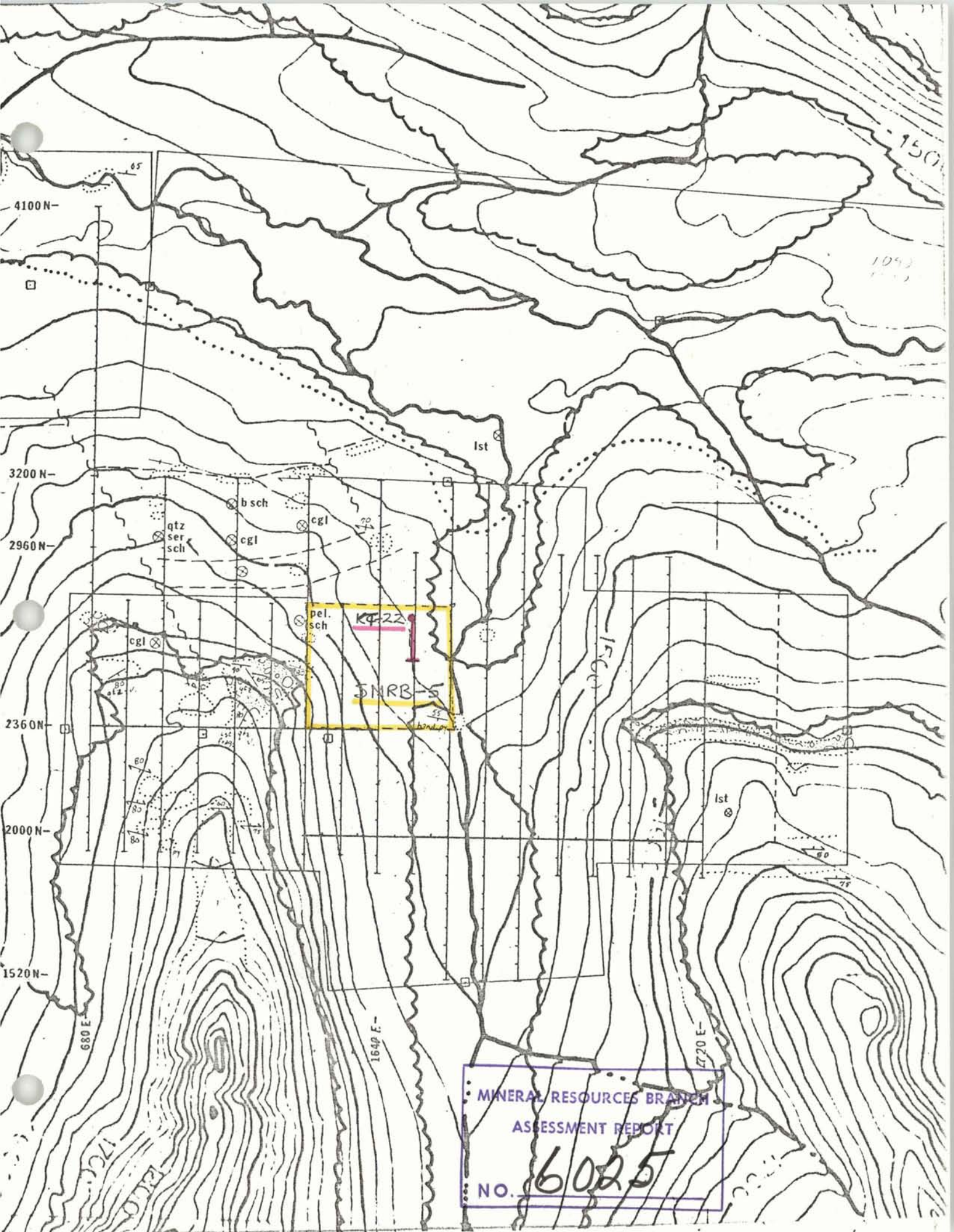
MINERAL RESOURCES BRANCH
ASSESSMENT REPORT
 No. **6025**



NOTE: On the above index the sheets published are shown.

KUTCHO CREEK

C R Y
BRITISH



MINERAL RESOURCES BRANCH
ASSESSMENT REPORT
NO. 6025

