

6026

SUMAC MINES LIMITED

DIAMOND DRILLING AT KUTCHO CREEK 1976

TC

SPAN GROUP AUGUST

104 I/IW

| |
|--------------------------|
| MINERAL RESOURCES BRANCH |
| ASSESSMENT REPORT |
| NO. <u>6026</u> |

I. R. Ryan
20.X.76

Introduction

This report contains the logs and costs of some diamond drilling in the Kutcho Creek area of northern British Columbia (NTS 104I/1W) done in the summer of 1976.

The drilling, BQ Wireline, was done under contract by Arctic Diamond Drilling Ltd. of Whitehorse, Y.T.

The costs tabulated later are for the entire program and are pro-rated on a footage basis for assessment work purposes.

The core is stored on the property at the camp site.

Direct Project Costs Kutcho 1976

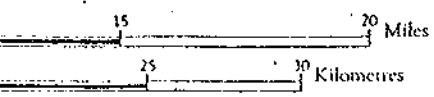
| | | | | | |
|-----|--------------------------------|-------------------|---------|-----------|----------------|
| a/b | T.C.Scott | June 15 - Sept.15 | 81 days | @\$57.71 | 4,675 |
| | W. Mennie | " " | 81 " | @\$50.32 | 4,026 |
| | A. Jordan | June 22 - Sept. 8 | 58 " | @\$56.88 | 3,300 |
| | G. Jordan | " " | 54 " | @\$36.37 | 1,965 |
| | K. Hashimoto | June 15 - Sept.15 | 7 " | @\$106.81 | 748 |
| | | | | | <u>14,714</u> |
| c | Food and supplies | | | | 5,046 |
| e | Fixed wing support | | | | 15,358 |
| | Helicopter support | | | | 40,085 |
| h | Report preparation | | | | 200 |
| i | Diamond drilling contract cost | | | | 135,666 |
| j | Fuel | | | | 10,756 |
| | TOTAL | | | | <u>221,825</u> |
| | Footage drilled | | | | 10,692 |
| | Cost per foot | | | | <u>\$20.75</u> |

T. R. Ryan
20.x.76



Contour interval 500 Feet.

All Elevations in Feet above Mean Sea Level.

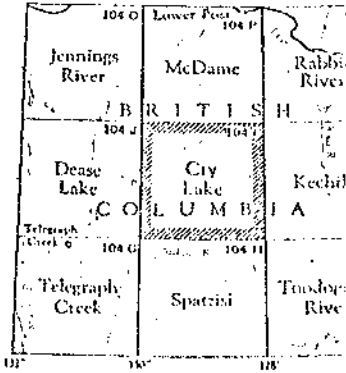


REFERENCE

| | | | |
|--------------------------|-------|-------------------------|-------|
| Triangulation Station | △ | Spot Elevation, in feet | 257 |
| Contours, Elevation | 500 | Wooded Areas | |
| " Depression | | Swamp or Marsh | |
| " Argozamine | | | |
| Stream, Intermittent | | Ferry | ○ |
| " " " " " " | | Navigational Light | ⊙ |
| " " " " " " | | Falls | |
| " " " " " " | | Elevation in Feet 250 | ○ |
| " " " " " " | | on Water | ⊙ |
| Main Electric Power Line | | | |

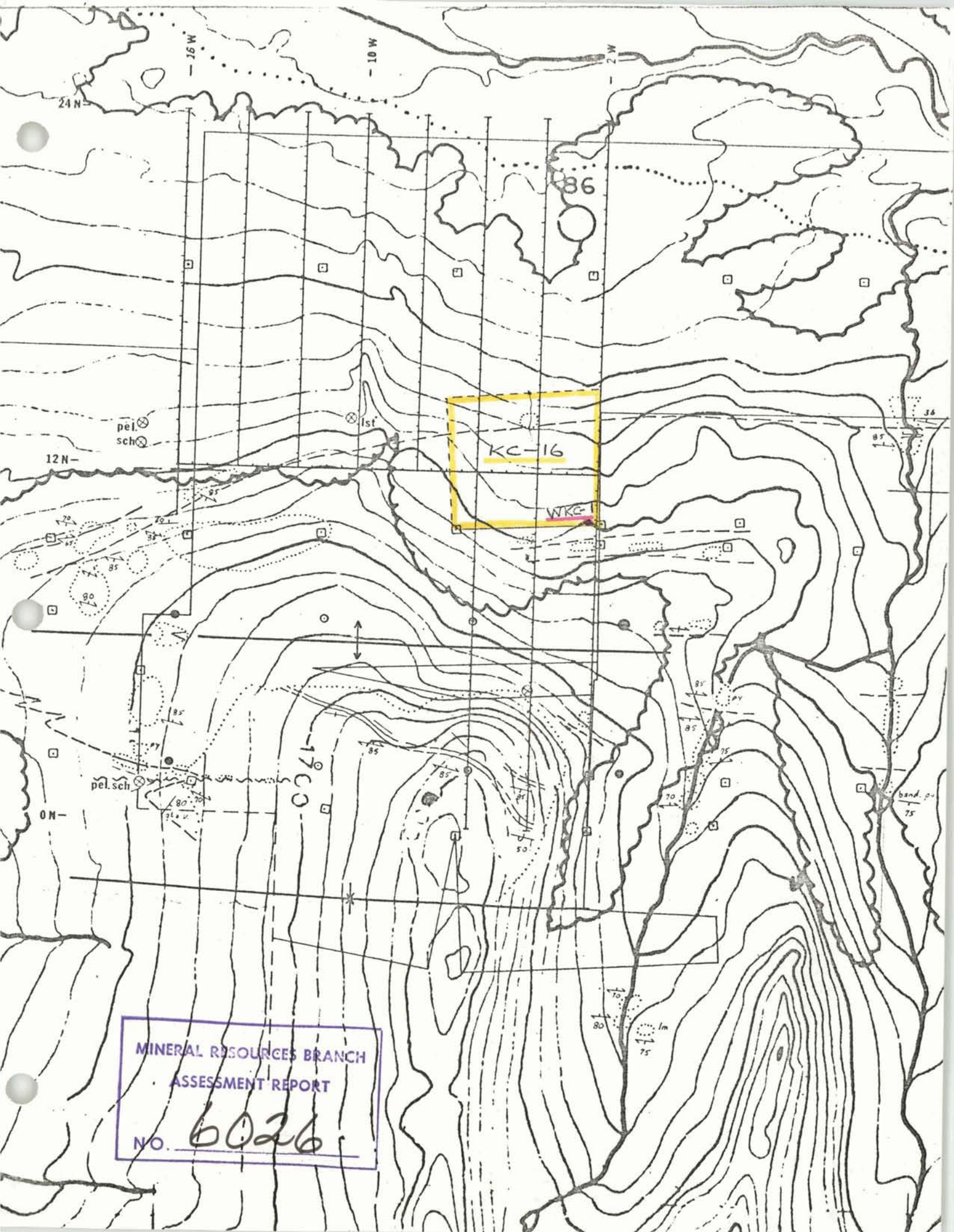
MINERAL RESOURCES BRANCH
ASSESSMENT REPORT
 NO. 6026

KUTCHO CREEK



NOTE: On the above index the sheets published are shown.

CR
Y
BRITISH



KC-16

WRC

MINERAL RESOURCES BRANCH
ASSESSMENT REPORT
NO. 6026

