

6038

SUMAC MINES LIMITED

DIAMOND DRILLING AT KUTCHO CREEK 1976

KC 99

MESS GROUP SEPTEMBER

104I/IW

MINERAL RESOURCES BRANCH  
ASSESSMENT REPORT

NO. 6038

T. R. Ryan  
20.X.76

## Introduction

This report contains the logs and costs of some diamond drilling in the Kutcho Creek area of northern British Columbia (NTS 104I/1W) done in the summer of 1976.

The drilling, BQ Wireline, was done under contract by Arctic Diamond Drilling Ltd. of Whitehorse, Y.T.

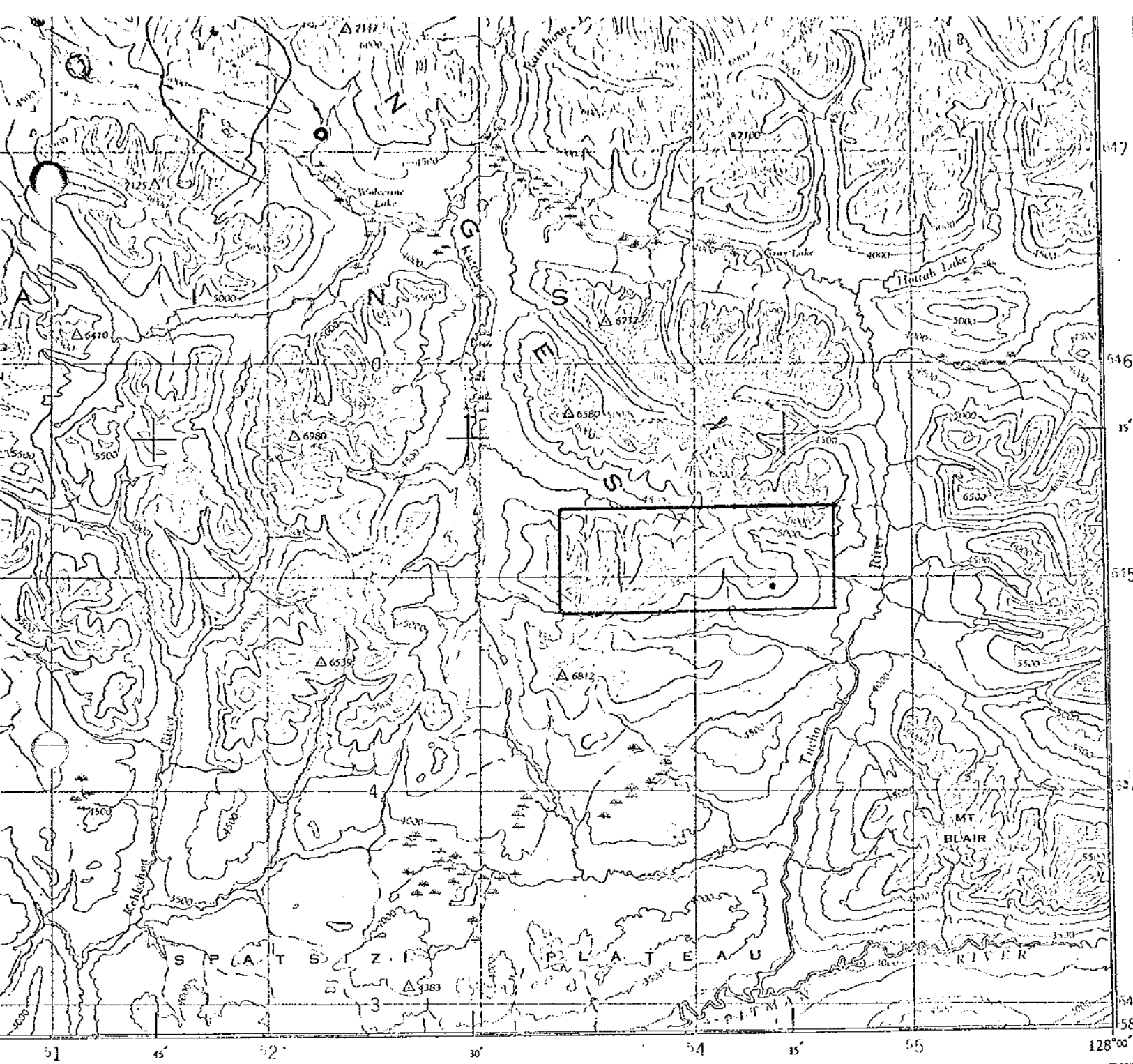
The costs tabulated later are for the entire program and are pro-rated on a footage basis for assessment work purposes.

The core is stored on the property at the camp site.

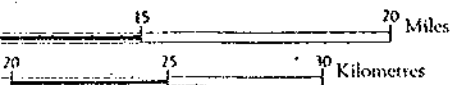
Direct Project Costs      Kutcho 1976

a/b	T.C.Scott	June 15 - Sept.15	81 days	@\$57.71	4,675
	W. Mennie	" "	81 "	@\$50.32	4,026
	A. Jordan	June 22 - Sept. 8	58 "	@\$56.88	3,300
	G. Jordan	" "	54 "	@\$36.37	1,965
	K. Hashimoto	June 15 - Sept.15	7 "	@\$106.81	748
					<u>14,714</u>
c	Food and supplies				5,046
e	Fixed wing support				15,358
	Helicopter support				40,085
h	Report preparation				200
i	Diamond drilling contract cost				135,666
j	Fuel				<u>10,756</u>
	TOTAL				<u>221,825</u>
	Footage drilled				10,692
	Cost per foot				<u>\$20.75</u>

*T. R. Rogers*  
*20. x. 76*



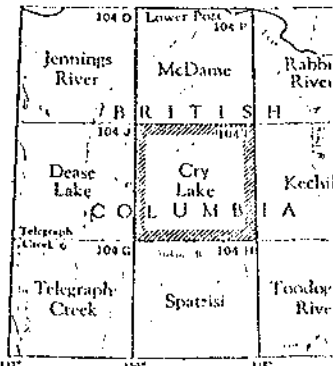
Contour interval 500 Feet.  
All Elevations in Feet above Mean Sea Level.



REFERENCE

Triangulation Station	△	Spot Elevation, in feet	257
Contours, Elevation	500	Woods	.....
" Depression	.....	Swamp or Marsh	.....
Apposition	.....		
Stream, monument	.....	W.L. 241	
" "	.....	Ferry	
" Falls	.....	Navigation Light	
Aerostone, on land	.....	Elevation on feet 250	○
Mean Electric Power Line	.....	on Water	⊙
		Mud Sand	.....

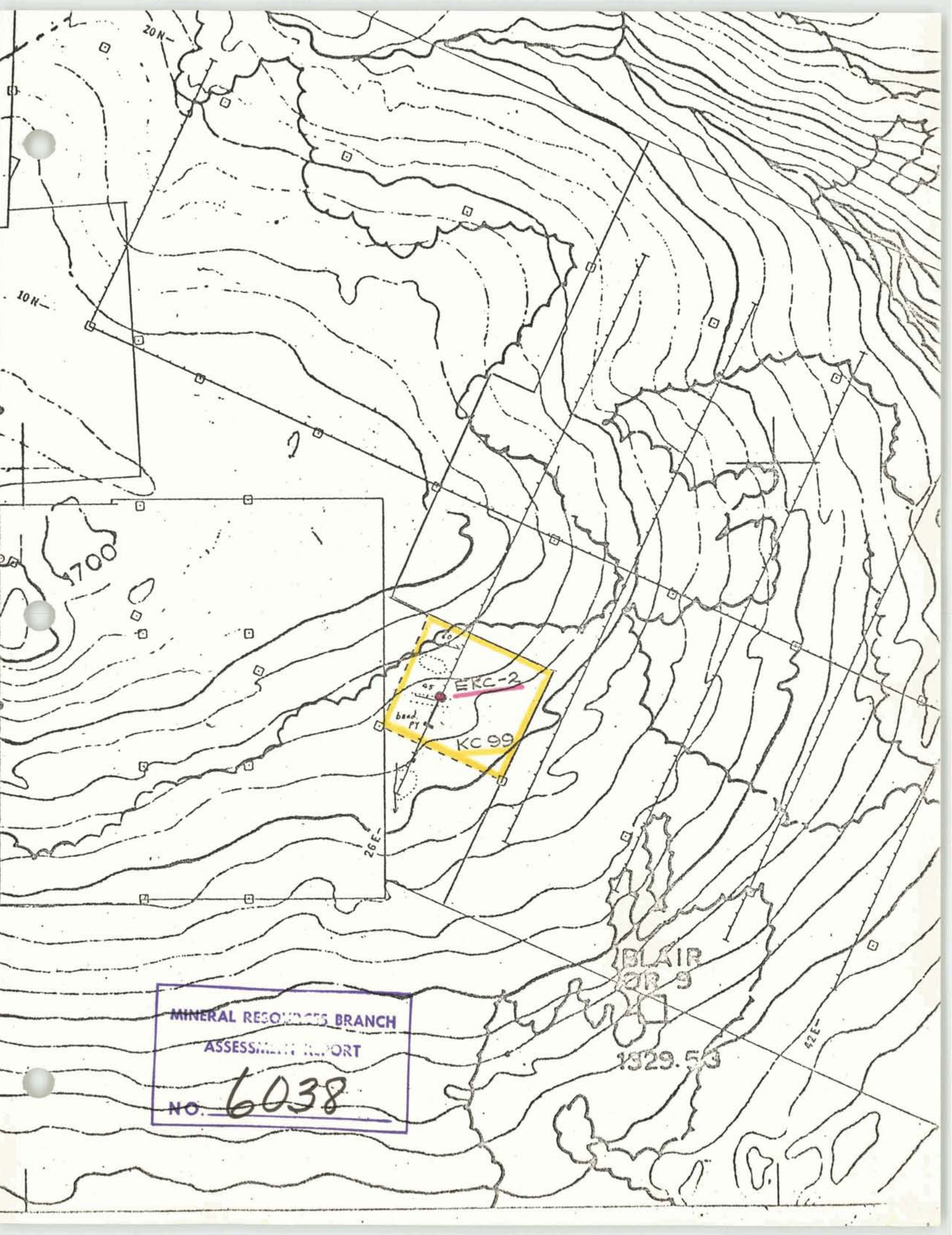
**MINERAL RESEARCH BRANCH**  
**ASSESSMENT REPORT**  
**No. 6038**



NOTE: On the above index the sheets published are shown.

**KUTCHUK CREEK**

**CRY  
BRITIS**



MINERAL RESOURCES BRANCH

ASSESSMENT REPORT

NO. 6038

BLAIR  
1529.53



