

6039

SUMAC MINES LIMITED

DIAMOND DRILLING AT KUTCHO CREEK 1976

TOUCH GROUP AUGUST

KC
104I/IW

MINERAL RESOURCES BRANCH
ASSESSMENT REPORT
NO. <u>6039</u>

T. Rayson
20.8.76

Introduction

This report contains the logs and costs of some diamond drilling in the Kutcho Creek area of northern British Columbia (NTS 104I/1W) done in the summer of 1976.

The drilling, BQ Wireline, was done under contract by Arctic Diamond Drilling Ltd. of Whitehorse, Y.T.

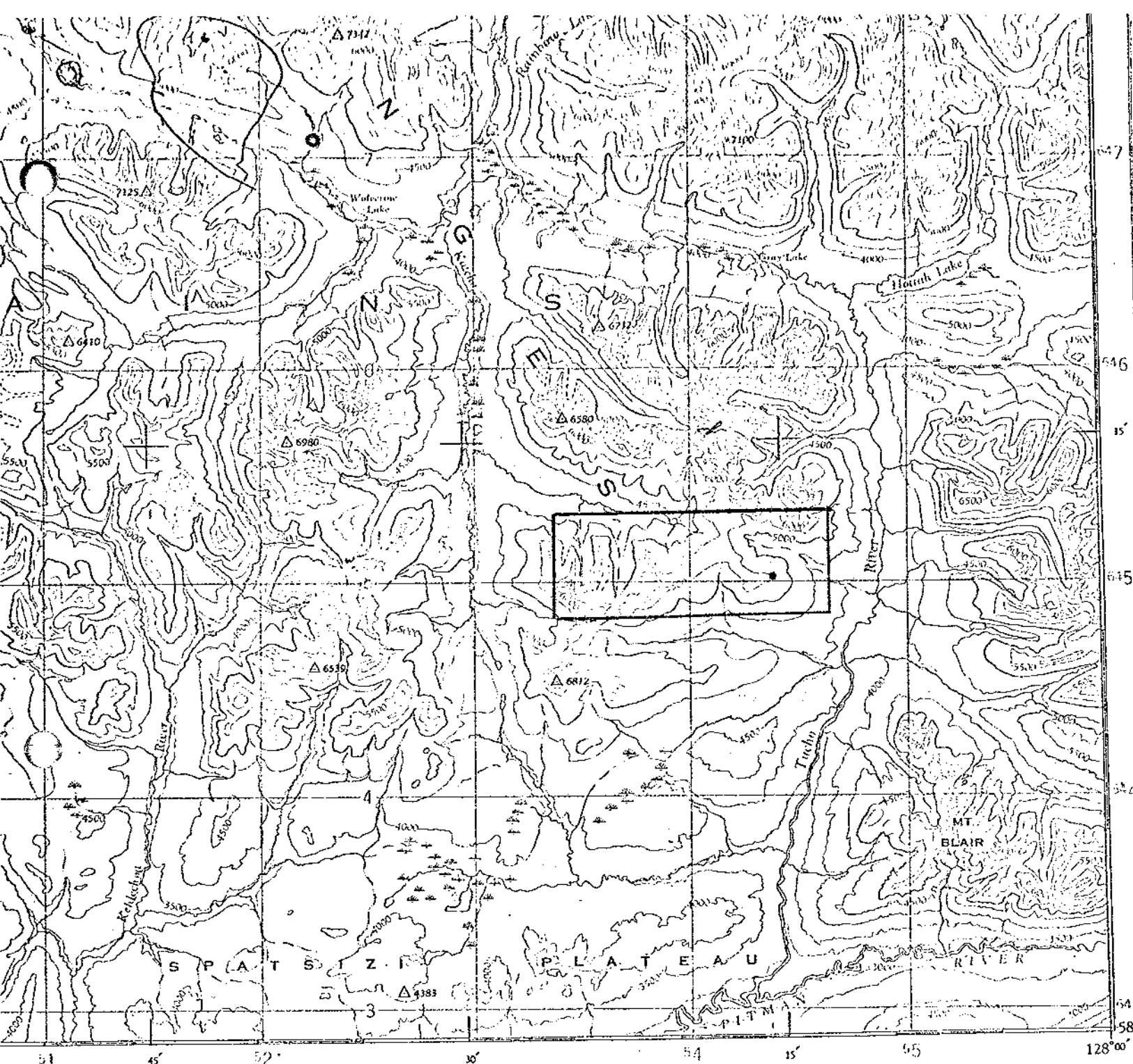
The costs tabulated later are for the entire program and are pro-rated on a footage basis for assessment work purposes.

The core is stored on the property at the camp site.

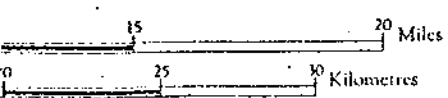
Direct Project Costs Kutcho 1976

a/b	T.C.Scott	June 15 - Sept.15	81 days @ \$57.71	4,675
	W. Mennie	" "	81 " @ \$50.32	4,026
	A. Jordan	June 22 - Sept. 8	58 " @ \$56.88	3,300
	G. Jordan	" "	54 " @ \$36.37	1,965
	K. Hashimoto	June 15 - Sept.15	7 " @ \$106.81	748
				<u>14,714</u>
c	Food and supplies			5,046
e	Fixed wing support			15,358
	Helicopter support			40,085
h	Report preparation			200
i	Diamond drilling contract cost			135,666
j	Fuel			<u>10,756</u>
	TOTAL			<u>221,825</u>
	Footage drilled			10,692
	Cost per foot			<u><u>\$20.75</u></u>

T. Rayson
20.X.76



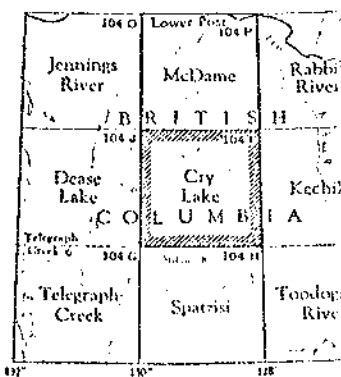
Contour interval 500 Feet.
All Elevations in Feet above Mean Sea Level.



REFERENCE

Triangulation Station	△	Spot Elevation, in feet	257
Contours, Elevation	500	Wooded Areas	
" Depression	300	Swamp or Marsh	
" Approximate			
Stream, Intermittent			
Ferry		W.L. 241	
Navigation Light			
Aeronaut. on land		Elevation in Feet 250	
Main Electric Power Line		on Water	

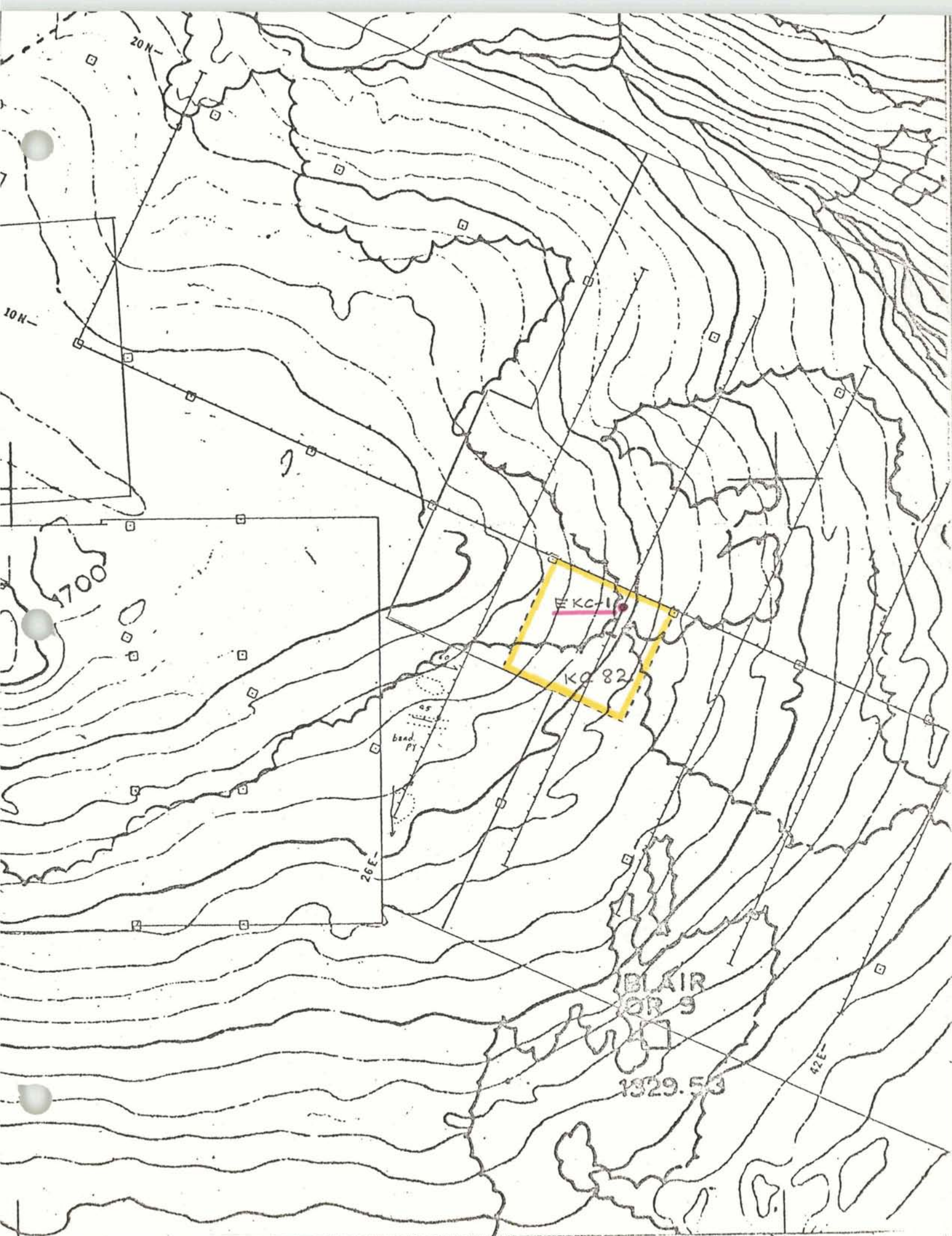
MINERAL RESOURCES BRANCH
ASSESSMENT REPORT
No. 6039



NOTE: On the above index the sheets published are shown.

KUTCHO CREEK

C R Y
BRITIS



20N-

10N-

1700

26E-

42E-

KC-1

KC 82

BLAIR
OR 9

1329.53

band
PY

DIAMOND HILL RECORD

PROPERTY _____ TOUCH GROUP

HOLE No. _____ EKC - 1

DIP TEST		
	Angle	
Footage	Reading	Corrected
0		50
176		46
477		46

Hole No. EKC-1 Sheet No. _____

Section _____

Date Begun.....27 Aug. 1976

Date Finished. 30 Aug. 1976

Lot. 9.5 N

Dep. 30.0 E

Bearing... 180°

Elev. Collar 4950'

Total Depth. 501'

Logged By...Mr....Hashimoto

Claim KC 82

Core Size BQ

[illegible]