

6081

ASSESSMENT REPORT

DIAMOND DRILLING

BOSS MOUNTAIN MINE

Ben 1 - 4 Mineral Claims

Adanac Crown Granted Mineral Claim

52°05'00" N ^{122°54'} 12°50'00" W

CARIBOO MINING DIVISION

93A/2W

BY:

A.R. Pollmer

NORANDA MINES LIMITED

November 15, 1976

MINERAL RESOURCES BRANCH
ASSESSMENT REPORT
NO. 6081

TABLE OF CONTENTS

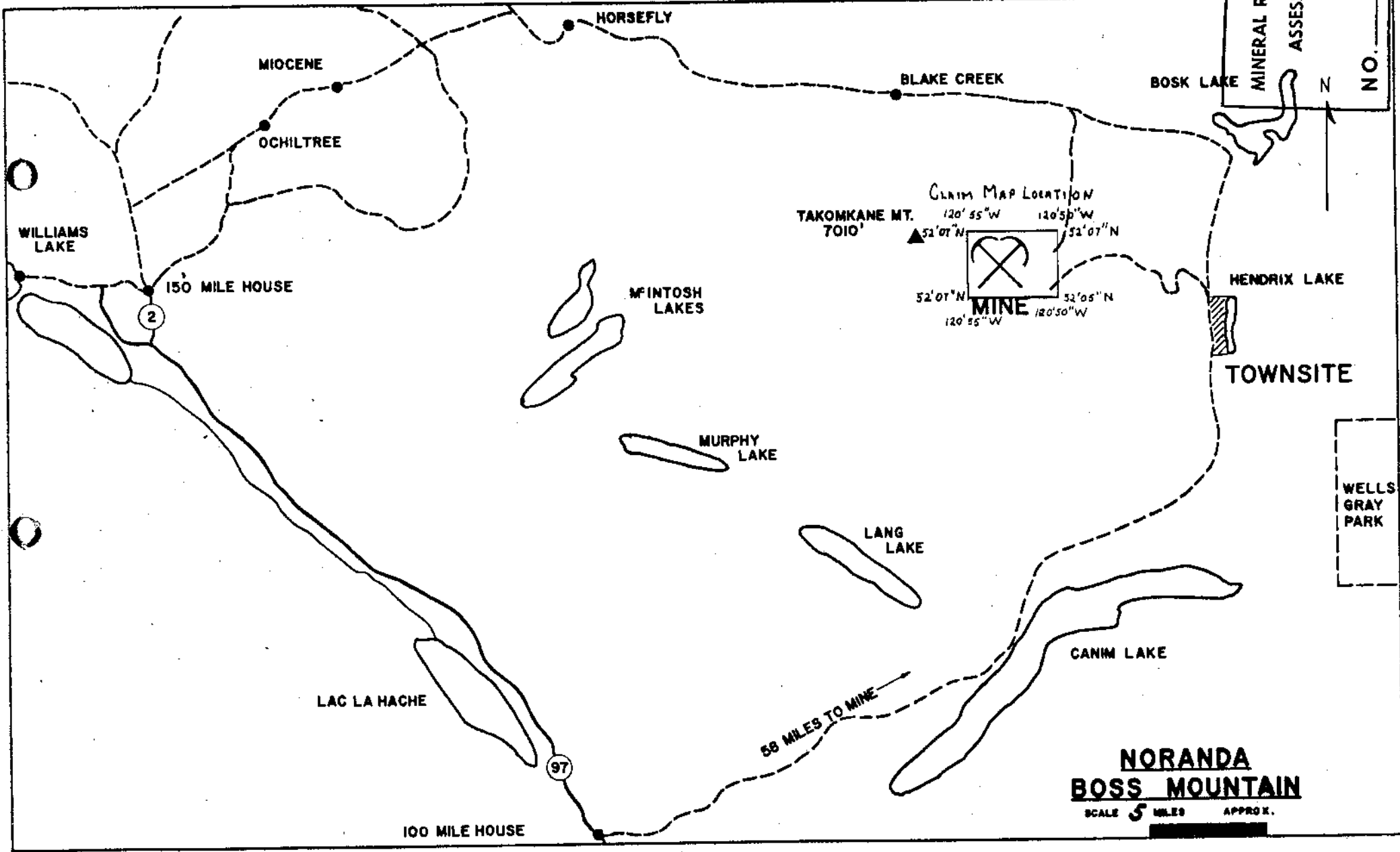
INTRODUCTION
INDEX MAP
DRILL LOGS
STATEMENT OF QUALIFICATIONS
STATEMENT OF COSTS
PLAN MAP

INTRODUCTION

The property is the Boss Mountain Mine of Noranda Mines Limited and covers part of a drilling program during the summer of 1976.

The mine is 58 miles east of 100 Mile House, B.C. The geology and general area have been well reported in the "Minister of Mines Annual Reports" and "Geology, Exploration and Mining" as published by the Department of Mines and Petroleum - Resources every year since 1964.

The work covered by this report is: DDH #76 - 3 and DDH # 76 - 13. Both of these holes are on the Adanac Crown Granted Mineral Claim. The total footage was 1134 feet (345.64 m) and the work was done between July 24 and August 9, 1976.



**NORANDA
BOSS MOUNTAIN**
SCALE 5 MILES APPROX.

WELLS
GRAY
PARK

BOSS MOUNTAIN D.D.H. 76-3

SHEET 1

LAT. 4128.4'N COLL. ELEV. 5732.2' DIP 90° CORE NO. 1000 LOGGER J.M.
 DEP. 4080.2'E BEARING LENGTH 567 START, END July 24 - July 27

FOOTAGE	CORE RECOVERY	SLUDGE Rec. % Mo	ROCK + STRUCTURES Gd, Qm, Rb, etc. a, r, b, etc.	ALTERATION bi, ch, ep, etc. Bi, Hb, Pc, etc.	METALLIC MINERALS Est. % Mo MoS ₂ , Py, Mag. etc.	GRAPHIC LOG	MOLY STRINGERS			OVER- SIZE Kg % Mo	UNDER- SIZE Kg % Mo	SEPARATION INDEX	% Mo. Core Core + Sludge	MISC.
							Type # No.	Total Width	% MoS ₂					
0-5		/	0-15	OVERBURDEN										
5-10		/												
10-15		/												
15-20		/	15 Gd Highly siliceous	Hb → bi Bi → bi a little epidote	Mo tr Py 10		15/ 1/2 / tr		83.4	16.6		.011		
20-25		/	Gd	Hb → bi Bi → bi	Mo .05 Py 5 Mag tr		4p/ 1/2 / 2 1/4(5) 1/16(tr) 1/16(tr) 1/16(tr) 1/16(2)		83.7	16.2		.001		
25-30		/	Gd	Hb → bi Bi → bi	Mo .01 Py 2		2 (1) 1/2(5) 2p/ 3/2 / 3		83.0	17.0		.001		
30-35		/	Gd	↓	Mo .03 Py 1 Mag .5		1p / 1 / 10 1/2 / 1/4 / 0 1/4(0) 1(10)		83.9	16.0		.007		
35-40		/	Gd siliceous		Mo 0 Py 5		15 / 1/8 / 0 1/8(tr)		83.5	16.5		.001		
40-45		/	40-47 fine grained Gd siliceous	some epidote	Mo 0 Py 5				83.6	16.4		.001		
45-50		/	siliceous fine grained Gd. 48 Gd siliceous		Mo .02 Py 2		1p / 1/4 / 5 1/4(5)		83.7	16.3		.016		

[Handwritten signature]

BOSS MOUNTAIN D.D.H. 76-3

SHEET 2

LAT. 41.28.4'N COLL. ELEV. 5732.2' DIP 90° CORE NO. LOGGER J M & ARP

DEP. 4080.2'E BEARING LENGTH 567 START, END July 24 - July 27

FOOTAGE	CORE RECOVERY	SLUDGE Rec. / % Mo	ROCK + STRUCTURES Gd, Qm, Rb, etc. a, r, b, etc.	ALTERATION bi, ch, ep, etc. Bi, Hb, Pc, etc.	METALLIC MINERALS Est. % Mo MoS ₂ , Py, Mag. etc.	GRAPHIC LOG	MOLY STRINGERS		OVER-SIZE Kg / % Mo	UNDER-SIZE Kg / % Mo	SEPARATION INDEX	% Mo. Core + Sludge	MISC.
							Type & No.	Total Width / % MoS ₂					
50-55		/	Gd	Hb ---> bi Bi ---> bi	Mo 0 Py 3	1(0) 15/13/0		84.0 / 15.9	/	/	.00		
55-60		/	Gd	↓	Mo tr Py 2	1/4(4) 15/14/tr		85.3 / 16.1	/	.011	.007		
60-65		/	Gd		Mo .02 Py 2	1/32(50) 1/4(0) 1P/14/0 25/14/20 1/4(0)		84.2 / 16.0	/	.008	.005		
65-70		/	Gd		ndyke 40° Mo 0 Py 1			83.9 / 16.1	/	.005	.005		
70-75		/	Gd		Mo 1 Py .5	1/4(1) 1P/6/10 15/14/1 6(10)		80.8 / 20.2	/	.007	.005		
75-80		/	Gd	Hb ----> bi Bi ---> bi	2 1/2 dyke Mo 0 Py .1			84.9 / 15.1	/	.014	.019		
80-85		/	Gd	↓	ndyke Mo .02 Py 1	25/18/5 1/16(tr) 1/16(10)		83.2 / 16.8	/	.005	.005		
85-90		/	Gd	Hb ---> bi Bi ---> bi minor epidote	Mo .02 Py 2	2(5) 1/32(2) 1/32(4) 35/2 1/16/6		83.0 / 16.9	/	.008	.009		
90-95		/	Gd → 93 rhyolite dyke 93 → 101.5		Mo tr Py 5 Mag 3			84.2 / 15.8	/	.010	.010		
95-100		/	rhyolite dyke		Mo 1.5 Py .5 Mag 1	1/32(100) 18/15/100 1P/12/50 1/2(50)		87.8 / 12.0	/	.096	.460	.075	

[Handwritten signature]

BOSS MOUNTAIN D.D.H. 76-3

SHEET 3

LAT. 41 28.4' N COLL. ELEV. 5732.2' DIP. 90° CORE NQ LOGGER J??
 DEP. 4080.2' E BEARING LENGTH 56.7 START, END July 24 - July 27

FOOTAGE	CORE RECOVERY	SLUDGE Rec. % Mo	ROCK + STRUCTURES Gd, Qm, Rb, etc. a, r, b, etc.	ALTERATION bi, ch, ep, etc. Bi, Hb, Pc, etc.	METALLIC MINERALS Est. % Mo MoS ₂ , Py, Mag. etc.	GRAPHIC LOG	MOLY STRINGERS			OVER- SIZE Kg % Mo	UNDER- SIZE Kg % Mo	SEPARATION INDEX	% Mo. Core Core + Sludge	MISC.
							Type # No.	Total Width	% MoS ₂					
100-105	/	/	rhyolite dyke 101.5 Gd	Hb → bi Bi → bi High kaolinite	Mo .03 Py .01 Mag 1 kca	4/32(100) 4p 1/4 / 100	79.7 /	25.8 /	0.018 /					
105-110	/	/	Gd	↓	Mo .01 Py .5	25 / 1/4 / 1	79.5 /	20.4 /	0.029 /				several small Ca vein	
110-115	/	/	Gd	Hb → bi Bi → bi low kaolinite	Mo tr Py 1 Ca	1/2(1) 35 / 3/32 / 0	78.4 /	16.5 /	0.008 /				"	
115-120	/	/	Gd 118 → 130 Rb	↓ mod kaolinite & talc	Mo tr Py 2 A		81.1 /	18.8 /	0.019 /					
120-125	/	/	Rb	slight kaolinite & talc	Mo 0 Py 3 Ca		84.6 /	15.3 /	0.024 /					
125-130	/	/	Rb	"	Mo 0 Py 1 Mag 1 A		84.0 /	15.9 /	0.004 /					
130-135	/	/	Gd	Hb → bi Bi → bi	Mo tr Py 3 Ca	4s / 5g / tr 1/4(tr) 3/32(tr) 1/4(tr)	96.9 /	0.003 /	0.004 /					
135-140	/	/	Gd	Hb → bi Bi → bi	Mo 0 Py 3		83.7 /	16.8 /	0.015 /					
140-145	/	/	Gd	↓	Mo .01 Py 3 Mag 1	1/32(tr) 35 / 1/4 / 1 1/8(s) 1/32(s) 1/4(tr)	83.5 /	16.4 /	0.006 /					
145-150	/	/	Gd		Mo .01 Py 1	1p / 1/4 / 3 1s / 1/4 / tr 1/4(3)	83.6 /	16.4 /	0.012 /					

[Handwritten signature]

BOSS MOUNTAIN D.D.H. 76-3

SHEET 4

LAT. 4128.4'N COLL. ELEV. 5732.2' DIP 90° CORE NR LOGGER Jm
 DEP. 4080.2'E BEARING LENGTH 56.7 START, END July 24 - July 27

FOOTAGE	CORE RECOVERY	SLUDGE Rec. % Mo	ROCK + STRUCTURES Gd, Qm, Rb, etc. a, r, b, etc.	ALTERATION bi, ch, ep, etc. Bi, Hb, Pc, etc.	METALLIC MINERALS Est. % Mo MoS ₂ , Py, Mag. etc.	GRAPHIC LOG	MOLY STRINGERS			OVER- SIZE Kg % Mo	UNDER- SIZE Kg % Mo	SEPARATION INDEX	% Mo. Core + Sludge	MISC.
							Type & No.	Total Width	% MoS ₂					
150-155	/	/	Gd	Hb → bi Bi → bi	Mo .08 Py .1 Mag 1	1/8(s) 2p/1 5/8/3 1/8(tr) 4s/1/2/15 1/8(1) 1/8(s) 1/8(10)	81.1	18.8	.045	.069				
155-160	/	/	Gd	↓	Mo tr Py 2 ca Mag 1	1/8(tr) 1/8(o) 3s/5/16/tr 1/8(o)	83.0	16.9	.016	.050				
160-165	/	/	Gd	Hb → bi Bi → bi minor epidote	Mo .04 ca Py .5 Mag 1 CHSH	1/8(o) 1/32(tr) 3s/1 1/4/5 1(s)	77.9	22.0	.046	.030				
165-170	/	/	Gd brd. zone 167 → 170 rich in Plag.	↓	Mo .05 Py 1	1(s) 3s/2/7 1/4(tr) 3/4(s)	80.9	19.0	.055	.075				
170-175	/	/	Gd.		Mo .02 Py 5	1/4(s) 1/4(20) 1/4(o) 1p/1/4/5 1/32(o) 4s/9/16/8 1/4(s)	83.2	16.7	.014	.012				
175-180	/	/	Gd		Mo .08 Py 1	1p/1/4/10 1/32(tr) 4s/1 3/8/9 1/8(s) MoS ₂ & R 1/4(10) 1(25)	80.8	17.1	.126	.158				
180-185	/	/	Gd	Hb → bi Bi → bi	Mo .02 Py .5	1p/3/2/1 1/8(o) 4s/3/4/1 1/8(tr) 1/8(s) 3/8(s) 1/8(tr)	80.8	19.1	.088	.028			p < 50°	
185-190	/	/	Gd	Hb → bi Bi → bi some epidote & K'spor	Mo .04 Py .5	1/4(10) 1p/3/4/20 1s/1/4/10 3/4(20)	84.2	15.7	.052	.112			p < 50°	
190-195	/	/	Gd	↓	Mo .05 Py .5	1/4(25) 1/2(20) 2p/3/4/22 1s/3/4/0 3/4(o)	80.2	19.7	.155	.024			p < 50°	
195-200	/	/	Gd	Hb → bi Bi → bi	Mo .01 Py .5	1s/1/6/tr 1/8(tr)	83.2	16.7	.011	.018				

Jm

BOSS MOUNTAIN D.D.H. 76-3

SHEET 5

LAT. 4128.4'N COLL. ELEV. 5732.2' DIP 90° CORE NO. LOGGER B.M.C.
 DEP. 4080.2'E BEARING LENGTH 567 START, END July 24 - July 27

FOOTAGE	CORE RECOVERY	SLUDGE Rec. % Mo	ROCK + STRUCTURES Gd, Qm, Rb, etc. a, r, b, etc.	ALTERATION bi, ch, ep, etc. Bi, Hb, Pc, etc.	METALLIC MINERALS Est. % Mo MoS ₂ , Py, Mag. etc.	GRAPHIC LOG	MOLY STRINGERS			OVER- SIZE Kg % Mo	UNDER- SIZE Kg % Mo	SEPARATION INDEX	% Mo. Core Core + Sludge	MISC.
							Type # No.	Total Width	% MoS ₂					
200-205	/	/	Gd.	1" → bc Bc → bc	Mo .03 Py 1	1/2" (tr) 1/4" (tr) 1/2" (tr) 1/2" (tr) 1/2" (tr) 1/2" (tr)	45/8/10 10/1/1	83.0	16.9	45° 50°	.018			
205-210	/	/	Gd.	↓	Mo .01 Py 1	1/2" (tr) 1/2" (tr) 1/2" (tr) 1/2" (tr)	30/1/20	81.7	18.3	48° 30°	.016			
210-215	/	/	Gd.		Mo .01 Py .50	1/2" (tr) 1/2" (tr)	25/1/20	81.1	18.8		.014	Mo smear in Rhyolite		
215-220	/	/	Gd.	Hb → bc Bc → bc	Mo tr Py 1	1/2" (tr)		80.8	19.6		.009			
220-225	/	/	Gd.	↓	Mo .015 Py .50	1/2" (tr) 1/2" (tr) 1/2" (tr) 1/2" (tr)	23/1/30 29/1/25	82.1	17.9		.117			
225-230	/	/	Gd + Rb.		Mo tr Py .5	1/2" (tr)		84.0	15.9		.059	Red mineral in Rb.		
230-235	/	/	Rb medium sized fairly angular inclusions		Mo tr Py .5	1/2" (tr)		83.3	16.6		.062			
235-240	/	/	Rb + Gd		Mo .01 Py .5	1/2" (tr)		81.2	18.7		.034	Mo @ 235' + 240'		
240-245	/	/	Gd.		Mo .00 Py .5	1/2" (tr)		81.6	18.3		.016			
245-250	/	/	Gd.		Mo .00 Py 1	1/2" (tr)		81.6	18.3		.004			

[Handwritten signature]

BOSS MOUNTAIN D.D.H. 76-3

SHEET 6

LAT. 41 28.4' N COLL. ELEV. 5732.2' DIP 90° CORE NR LOGGER B.M.C.

DEP. 4080.2' E BEARING LENGTH 56.7 START, END July 24 - July 27

FOOTAGE	CORE RECOVERY	SLUDGE Rec. % Mo	ROCK + STRUCTURES Gd, Qm, Rb, etc. a, r, b, etc.	ALTERATION bi, ch, ep, etc. Bi, Hb, Pc, etc.	METALLIC MINERALS Est. % Mo MoS ₂ , Py, Mag. etc.	GRAPHIC LOG	MOLY STRINGERS			OVER- SIZE Kg % Mo	UNDER- SIZE Kg % Mo	SEPARATION INDEX	% Mo. Core Core + Sludge	MISC.
							Type # No.	Total Width	% MoS ₂					
250-255	/	/	Gd.	Hb → bc Bi → bc	Mo tr Py 1	15/2/10 1/4(tr)	83.1/	16.8/	/	/	/	.012/		
255-260	/	/	Gd		Mo tr Py 1		82.2/	17.7/	/	/	/	.67/		
260-265	/	/	Gd	minor epidote	Mo .05 Py 1	1/8(50) 1/8(50) 35 1/2/50 1/8(50)	83.1/	16.8/	/	/	/	.000/		
265-270	/	/	Gd.	"	Mo tr Py 1	10/1/20 1/6(50)	83.4/	16.5/	/	/	70°	.004/		
270-275	/	/	Gd.	"	Mo .02 Py 1	15/16/5 1/6(5)	83.2/	16.7/	/	/	/	.005/		
275-280	/	/	Gd		Mo .02 Py 5 pr. Quartz Str.	1/2(100) 2 1/2/100/100 24(100)	78.5/	21.4/	/	/	50° 85°	.012/		
280-285	/	/	Qz. str.		Mo .08 Py .5	5(5) 1/2(100) 10/6/5 15/32/100	77.0/	22.9/	/	/	55°	.009/		
285-290	/	/	Qz str. + Porphy		Mo 10% Py .1	longer Qz Porphy	73.7/	26.2/	/	/	/	.435/	Mo in Qz rock	
290-295	/	/	Gd.	minor-mol felsite chl. alt. - shearing	Mo .15 Py .1		78.1/	21.8/	/	/	/	.165/	Mo in shear @ 290'	
295-300	/	/	Gd	minor felsite chl. alt. - shearing	Mo tr Py .5	3 1/2/12/4 1/4(100) 15 1/8/4 1/8(tr) 1/2(5)	80.1/	17.8/	/	/	55° 20°	.005/		

[Handwritten signature]

BOSS MOUNTAIN D.D.H. 76-3

SHEET 7

LAT. 41.28.4'N COLL. ELEV. 5732.2' DIP 30° CORE NO. LOGGER B.M.C.
 DEP. 40.80.2'E BEARING LENGTH 56.7 START, END July 24 - July 27

FOOTAGE	CORE RECOVERY	SLUDGE Rec. / % Mo	ROCK + STRUCTURES Gd, Qm, Rb, etc. a, r, b, etc.	ALTERATION bi, ch, ep, etc. Bi, Hb, Pc, etc.	METALLIC MINERALS Est. % Mo MoS ₂ , Py, Mag. etc.	GRAPHIC LOG	MOLY STRINGERS		OVER-SIZE Kg / % Mo	UNDER-SIZE Kg / % Mo	SEPARATION INDEX	% Mo. Core / Core + Sludge	MISC.
							Type	Total / % MoS ₂					
295-305	/	/	Gd.	Hb -- 7 bi Bi -- 7 bi	Mo tr. Py 1			84.1 / .014	15.8 / .027		.016		
305-310	/	/	Gd + Rb. Fe bi, ta - Hb + rhysolite inclusions mod angular.	↓	Mo tr. Py .5	1/2(20) 10 1/2 / 20		88.4 / .033	16.6 / .035	50°	.033		
310-315	/	/	Rb	some mod. chl. alt.	Mo tr. Py .5			86.6 / .010	13.3 / .026		.010		
315-320	/	/	Rb	mod. chl. alt. @ 319'	Rb .05 Py .5	15 1/2 / 2 1 1/2(5) 10 1/2 / 2 1/2(2)		19.8 / .060	20.1 / .081		.064		
320-325	/	/	Rb		Mo tr. Py 1	12 1/2 / tr 1/2(4)		80.3 / .004	17.7 / .007		.005		
325-330	/	/	Rb L Gd.		Mo .04 Py 1	10 1/2 / 20 1/2(20)		83.2 / .029	16.7 / .037	45°	.034		
330-335	/	/	Gd.		Mo .10 Py 1	11(tr) 13 1/2 / 50 1/2(50) 50 2 / 5 1/2(50) 1/2(50) 1/2(50)		81.2 / .106	18.7 / .467	45° 50°	.109		
335-340	/	/	Gd		Mo .06 Py .5	1/2(5) 30 1/2 / 3 1/2(10) 1/2(20)		82.3 / .065	17.7 / .112	50° 25° 25°	.081	.130	
340-345	/	/	Gd		Mo tr. Py .5			83.3 / .007	16.6 / .017		.009		
345-350	/	/	Gd.		Mo .02 Py .5	1 1/2 / 1 1/2(1) 1/2(2)		86.8 / .086	17.1 / .075	45° 45°	.084	.044	

[Handwritten signature]

BOSS MOUNTAIN D.D.H. *71-3*

SHEET 8

LAT. *4128.4'N* COLL. ELEV. *5732.2'* DIP *20°* CORE NO. LOGGER *B.M.Y.*

DEP. *4080.2'E* BEARING LENGTH *56.7'* START, END *July 24 - July 27*

FOOTAGE	CORE RECOVERY	SLUDGE Rec. % Mo	ROCK + STRUCTURES Gd, Qm, Rb, etc. a, r, b, etc.	ALTERATION bi, ch, ep, etc. Bi, Hb, Pc, etc.	METALLIC MINERALS Est. % Mo MoS ₂ , Py, Mag. etc.	GRAPHIC LOG	MOLY STRINGERS		OVER- SIZE Kg % Mo	UNDER- SIZE Kg % Mo	SEPARATION INDEX	% Mo. Core + Sludge	MISC.
							Type & No.	Total Width MoS ₂					
350-355	/	/	Gd	Hb → si Bi → bi	Mo .04 Py 1	1/2(20)		81.7 /	15.2 /	50°	.048 /		
355-360	/	/	Gd	↓	Mo .06 Py 1	1/2(20) 1/4(10) 15/16(10)		.042 /	.074 /	30° 30° 40° 35°	.114 /		
360-365	/	/	Gd.		Mo .12 Py 1	1/2(2) 1/4(5) 10/16(12) 1/4(1) 15/16(20)		81.8 /	18.1 /	50° 40° 30°	.301 /		
365-370	/	/	Gd. Fine Gr. Gd.		Mo .06 Py 1	1/2(1) 10/16(2) 1/4(15) 15/16(10) 1(10)		84.6 /	16.4 /	45° 45°	.057 /		
370-375	/	/	Fine Gr. Gd.		Mo .03 Py 5	10/16(12) 15/16(11) 1/16(2) 1/4(1)		85.2 /	14.7 /	50° 50°	.079 /		
375-380	/	/	Fine Gr. Gd.		Mo tr Py 1			85.6 /	14.3 /	30°	.027 /		
380-385	/	/	Fine Gr. Gd.		Mo .04 Py 1	10/16(30)		.007 /	.016 /		.044 /		
385-390	/	/	Fine Gr. Gd.		Mo .04 Py 1	10/16(30)		87.5 /	12.4 /	30°	.039 /		
390-395	/	/	Fine Gr. Gd.	minor granitic	Mo .08 Py 1	1/2(5) 2/16(10) 15/16(30) 1/4(30) 1/4(20)		88.3 /	11.6 /	35° 20°	.005 / .030 /		
395-400	/	/	Fine Gr. Gd.	"	Mo tr Py 1	1/4(4)		88.4 /	11.5 /	40°	.037 /		
400-405	/	/	Fine Gr. Gd.	"	Mo 0.12 Py 2	1/2(10) 10/16(10) 1(10) 35/16(13) 1/4(5) 1/4(15)		86.4 /	13.5 /	25°	.078 /		

[Handwritten signature]

BOSS MOUNTAIN D.D.H. 76-3

SHEET 9

LAT. 41 28.4' N COLL. ELEV. 5732.2' DIP 90 CORE NO. LOGGER J.M.
 DEP. 4080.2' E BEARING LENGTH 56.7' START, END July 24 - July 27

FOOTAGE	CORE RECOVERY	SLUDGE Rec. % Mo	ROCK + STRUCTURES Gd, Qm, Rb, etc. a, r, b, etc.	ALTERATION bi, ch, ep, etc. Bi, Hb, Pc, etc.	METALLIC MINERALS Est. % Mo MoS ₂ , Py, Mag. etc.	GRAPHIC LOG	MOLY STRINGERS			OVER- SIZE Kg % Mo	UNDER- SIZE Kg % Mo	SEPARATION INDEX	% Mo. Core Core + Sludge	MISC.
							Type & No.	Total Width	% MoS ₂					
400-405	/	/	Gd fine grained	Hb → bi Bi → bi	Mo.3 Py 3	1/4(20) 1/8(0) 1(30) 1/4(40) 6p/2 3/4/30 1/32(75) 1/2(10)	86.0	13.9	/	/	/	.952		
405-410	/	/	Gd fine grained 407 Gd siliceous	↓	Mo.03 Py 3	13/14/20 1/4(20)	84.9	15.0	/	/	/	.017		
410-415	/	/	Gd siliceous		Mo.25 Py 3	1/4(20) 5s/2 1/2/40 2@1/16(0) 2(60) 1/8(0)	82.0	17.9	/	/	/	.198		
415-420	/	/	Gd	Hb ---→ bi Bi ----→ bi	Mo.1 Py 1	3@ 1/4(0) 6s/5 1/8/3 1/4(10) 1/16(10) 1/8(tr)	83.8	16.1	/	/	/	.032		
420-425	/	/	Gd	Hb → bi Bi → bi	Mo.20 Py 3	1/16(0) 1/4(10) 2p/1/35 1/2(50) 3s/3 1/8/1 1/16(5) 1/2(20)	84.5	15.5	/	/	/	.140		
425-430	/	/	Gd	↓ minor → mod. epidote	Mo.04 Py 3	1/2(30) 2s/5 1/8/15 2@ 1/8(tr)	85.6	16.3	/	/	/	.037		
430-435	/	/	Gd	"	Mo.02 Py 2 Mag 3	1/4(5) 2@ 1/8(10) 2@ 1/4(10) 1/4(0) 7s/1/2 1/8(0)	84.3	15.6	/	/	/	.024		
435-440	/	/	Gd	Hb ---→ bi Bi ---→ bi	Mo.01 Py 5	1/8(5) 2s/1/4/2 1/8(tr)	83.0	16.5	/	/	/	.018		
440-445	/	/	Gd	Hb → bi Bi ---→ bi minor epidote	Mo.05 Py 3	1/16(0) 1/16(5) 2p/1/8/5 3s/3/8/15 1/16(tr) 1/4(15) 1/16(15)	83.1	16.8	/	/	/	.023		
445-450	/	/	Gd	"	Mo.15 Py 3	1/8(20) 5p/1 3/16/10 1/16(40) 6s/3/4/15 1/16(0) 1/8(10) 1/8(40) 2@ 1/16(5) 1/4(15) 1/8(20)	1083.9	16.3	/	/	/	.171		

[Handwritten signature]

BOSS MOUNTAIN D.D.H. 76-3

SHEET 10

LAT. 4128.4' N COLL. ELEV. 5732.2' DIP 90 CORE NO. LOGGER J.M.
 DEP. 4080.2' E BEARING LENGTH 567' START, END July 24 - July 27

FOOTAGE	CORE RECOVERY	SLUDGE Rec. % Mo	ROCK + STRUCTURES Gd, Qm, Rb, etc. a, r, b, etc.	ALTERATION bi, ch, ep, etc. Bi, Hb, Pc, etc.	METALLIC MINERALS Est. % Mo MoS ₂ , Py, Mag. etc.	GRAPHIC LOG	MOLY STRINGERS		OVER- SIZE Kg % Mo	UNDER- SIZE Kg % Mo	SEPARATION INDEX	% Mo Core Core + Sludge	MISC.
							Type & No.	Total Width % MoS ₂					
450-455	/	/	Gd	Hb → bi Bi →→ bi	Mo 1 Py 3	3p/1/2/10 1/4(tr) 15/1/4/tr 1/8(5) 1/4(10) 1/8(20)		84.4 / 15.5 /			.064 /	p 430°	
455-460	/	/	Gd	↓	Mo .05 Py 3	1p/1/2/30 1/2(30)		85.1 / 14.8 /			.103 /	several small dykes p 470°	
460-465	/	/	Gd		Mo .03 Py 3	1/4(5) 4s/3/8/.5 2@1/2(1)		84.3 / 15.6 /			.010 /		
465-470	/	/	Gd	Hb →→ bi Bi →→→ bi moderate epidote	Mo .02 Py 3	1/4(10) 1/8(tr) 1/32(30) 3s/3/8/10		83.3 / 16.6 /			.025 /		
470-475	/	/	Gd	↓ little epidote	Mo .02 Py 2 Mag 1	1/32(50) 1/4(20) 1/32(5) 1/8(25) 1/4(tr) 1/32(30)	6s/3/4/20	86.0 / 13.9 /			.017 /		
475-480	/	/	Gd		Mo .08 Py tr Mag 1	1/4(10) 1/8(5) 2@1/8(1) 2@1/8(5,30)	2p/1/4/17 4s/5/8/4	84.3 / 15.6 /			.129 /		
480-485	/	/	Gd		Mo 2.2 Py 1	3/4(30) 1/2(25) 1/4(15) 1/16(30)	2p/2/4/27 3s/3/8/26	82.5 / 17.4 /			.511 /	p 480° p 440°	
485-490	/	/	Gd		Mo .01 Py 3	3@1/16(10) 1/4(tr) 1/4(tr) 1/4(tr)	6s/3/4/tr	84.2 / 15.7 /			.010 /		
490-495	/	/	Gd	Hb →→→ bi Bi →→→→ bi	Mo .03 Py 3	1/16(5) 2@1/4(25) 1/4(10) 1/16(10)	5s/1/8	85.0 / 14.9 /			.063 /		
495-500	/	/	Gd 6" kaolinized zone at 498	↓	Mo 1.2 Py 3 Mag 1	5/8(20) 1/4(tr) 2@1/16(50) 1/4(20) 2@1/16(tr) 1/4(20)	1p/5/8/20 7s/1/11	82.8 / 17.1 /			.061 /	p 430°	

J.M.

BOSS MOUNTAIN D.D.H. 76-3

SHEET 11

LAT. 4128.4' N COLL. ELEV. 5732.2' DIP 90° CORE NO. LOGGER J.M.

DEP. 4080.2' E BEARING LENGTH 567' START, END July 24 - July 27

FOOTAGE	CORE RECOVERY	SLUDGE Rec. % Mo	ROCK + STRUCTURES Gd, Qm, Rb, etc. a, r, b, etc.	ALTERATION bi, ch, ep, etc. Bi, Hb, Pc, etc.	METALLIC MINERALS Est. % Mo MoS ₂ , Py, Mag. etc.	GRAPHIC LOG	MOLY STRINGERS			OVER- SIZE Kg % Mo	UNDER- SIZE Kg % Mo	SEPARATION INDEX	% Mo. Core Core + Sludge	MISC.
							Type	Total	% MoS ₂					
500-505	/	/	Gd	Hb → bi Bi → bi moderate kaolinization	Mo .08 Py 1	3/4(15) 2p/1/17 1/4(5) 1/2(50) 4S/1/4/15 3/8(tr) 1/4(20) 1/16(tr)	81.8	18.1	.054	.114		.065	p < 30°	
505-510	/	/	Gd	↓	Mo .02 Py 1	1/16(50) 3/8(5) 4S/1/4/14	83.0	16.9	.018	.010		.019		
510-515	/	/	Gd	some epidote	Mo .03 Py 1	2@1/4(6) 3/4(30) 1/8(5) 4S/1 3/8/10	83.4	16.5	.051	.058		.057		
515-520	/	/	Gd	slight kaolinization moderate K-spar	Mo .04 Py 1	1p/1/8/10 2@1/8(10) 4S/3/4/17 1/4(5) 1/8(10) 1/4(30)	82.4	17.5	.051	.118		.093		
520-525	/	/	Gd	"	Mo .01 Py 1	1/2(tr) 2@1/2(10) 1p/1/2/tr 4S/3/16/2 1/16(tr) 1/16(5)	81.5	18.4	.019	.023		.020	p < 30°	
525-530	/	/	Gd	moderate kaolinization slight epidote	Mo .06 Py 2	1p/1/2/50 1/2(50)	80.7	19.0	.103	.087		.051	p < 30°	
530-535	/	/	Gd	Hb → bi Bi → bi	Mo .03 Py 5	2S/1/4/30 1/2(10) 1/8(40)	81.6	18.3	.022	.024		.021		
535-540	/	/	Gd	↓	Mo .03 Py 5	1/4(20) 3/8(35) 2S/5/8/27	84.1	15.9	.075	.102		.050		
540-545	/	/	Gd	Hb → bi Bi → bi	Mo .02 Py 3	1/16(tr) 1/2(20) 1/16(40) 3S/1/8/20	85.4	14.5	.015	.016		.017		
545-550	/	/	Gd	↓ some epidote	Mo .03 Py 3	2@1/16(10) 1/16(60) 3S/3/16/33	83.9	16.0	.015	.033		.017		

J.M.

BOSS MOUNTAIN D.D.H. 76-13

SHEET 1

LAT. 4101.4' N COLL. ELEV. 5681.8' DIP. 90° CORE NO. LOGGER B.M.C.

DEP. 4317.8' E BEARING LENGTH 567' START, END AUG 7 → AUG 9

FOOTAGE	CORE RECOVERY	SLUDGE Rec % Mo	ROCK + STRUCTURES Gd, Qm, Rb, etc. a, r, b, etc.	ALTERATION bi, ch, ep, etc. Bi, Hb, Pc, etc.	METALLIC MINERALS Est. % Mo MoS ₂ , Py, Mag. etc.	GRAPHIC LOG	MOLY STRINGERS			OVER- SIZE Kg % Mo	UNDER- SIZE Kg % Mo	SEPARATION INDEX	% Mo. Core + Sludge	MISC.
							Type	Total	% MoS ₂					
0-5		/	o/b											
5-10		/	5-8' Qb 8-10' Gd	Hb → bi Bi → bc	Mo .00 Py .5				86.8/	13.1/		.016/		
10-15		/	Gd	micro oxidation	Mo .25 Py .5	1p/1/100 1/4(100) 15/1/150 1/3(100)			83.2/	16.8/		.188/		
15-20		/	Gd	"	Mo .02 Py 1.0	15/1/15 1/6(7)			83.9/	16.0/		.016/		
20-25		/	Gd	"	Mo .05 Py .5	15/1/15 1/4(15)			83.2/	16.8/		.058/		
25-30		/	Gd	"	Mo .12 Py .5	1/8(100) 15/1/100 3/2(100) 1/2(20) 20/1/10			80.6/	14.4/		.100/		
30-35		/	Gd	"	Mo .12 Py 1.0	1/2(20) 1p/1/20 1/4(100) 1/2(10) 35/1/10 1/2(100)			86.1/	13.9/	30°	.207/		
35-40		/	Gd	"	Mo .4 Py .5	1p/3/100 3(100)			85.2/	14.2/		.031/		
40-45		/	Gd	"	Mo .04 Py .5	1/2(1) 2p/3/2 1/4(5) 15/1/15 1/10(15)			84.7/	15.4/		.059/		
45-50		/	Gd	"	Mo .06 Py 1.0	4(1) 3p/4 1/1 1/2(10) 1/4(100)			85.5/	14.5/	45°	.043/		
		/									30° 45°	.046/		

BOSS MOUNTAIN D.D.H. 76-13

SHEET 2

LAT. 41° 01' 4" N COLL. ELEV. 5681.8' DIP 90° CORE NR. LOGGER B.M.C.

DEP. 4317.8' E BEARING LENGTH 567' START, END Aug. 7 → Aug. 9

FOOTAGE	CORE RECOVERY	SLUDGE Ret % Mo	ROCK + STRUCTURES Gd, Qm, Rb, etc. a, r, b, etc.	ALTERATION bi, ch, ep, etc. Bi, Hb, Pc, etc.	METALLIC MINERALS Est. % Mo MoS ₂ , Py, Mag. etc.	GRAPHIC LOG	MOLY STRINGERS			OVER- SIZE Kg % Mo	UNDER- SIZE Kg % Mo	SEPARATION INDEX	% Mo. Core Core + Sludge	MISC.
							Type No.	Total Width	% MoS ₂					
50-55	/	/	Gd	Hb → bi Bi → bi	Mo .02 Py .5	11(10) 11(10) 15 1/8 / 10 1/8(10) 2p / 2 / 100			85.9 / 14.1 /			.051 /		
55-60	/	/	Gd	↓	Mo .03 Py .5	1/4(5) 1p / 1 / 5			86.0 / 13.9 /			.027 /		
60-65	/	/	Gd		Mo .00 Py .5				84.7 / 15.3 /			.044 /		
65-70	/	/	Gd	slight chl. alt.	Mo .20 Py .5	3(5) 1/2(5) 2p / 3 1/2 / 5			85.6 / 14.4 /	30°		.086 /		
70-75	/	/	Gd	"	Mo .15 Py 1.0	1(10) 1p / 1 / 10 15 1/8 / 10 1/8(10)			85.7 / 14.3 /	40°		.192 /		
75-80	/	/	Gd	"	Mo tr Py .5	15 1/4 / tr 1/4(tr)			84.8 / 15.2 /			.036 /		
80-85	/	/	Gd	"	Mo .01 Py .5	1/10(1) 15 1/16 / 1			86.4 / 13.6 /			.022 /		
85-90	/	/	Gd	"	Mo .01 Py .5	1/10(1) 15 1/16 / 1			85.8 / 14.2 /			.026 /		
90-95	/	/	Gd	slightly Sinter gr.	Mo tr Py .5	15 1/8 / tr 1/8(tr)			43.9 / 56.1 /			.074 /		
95-100	/	/	Gd		Mo .02 Py .5	1/2(1) 1p / 1 / 1 15 1/8 / tr 1/8(tr)			78.9 / 21.0 /			.019 /		
									.016 / .032			.046 /		

[Handwritten signature]

BOSS MOUNTAIN D.D.H. 3-3

SHEET 3

LAT. 41° 14' N COLL. ELEV. 5671.8' DIP 20° CORE NR. LOGGER R.M.C.

DEP. 4317.8' E BEARING LENGTH 567' START, END Aug 7 - Aug 9

FOOTAGE	CORE RECOVERY	SLUDGE Recovery % Mo	ROCK + STRUCTURES Gd, Qm, Rb, etc. a, r, b, etc.	ALTERATION bi, ch, ep, etc. Bi, Hb, Pc, etc.	METALLIC MINERALS Est. % Mo MoS ₂ , Py, Mag. etc.	GRAPHIC LOG	MOLY STRINGERS			OVER- SIZE Kg % Mo	UNDER- SIZE Kg % Mo	SEPARATION INDEX	% Mo. Core Core + Sludge	MISC.
							Type & No.	Total Width	% MoS ₂					
100-105	/	/	Gd	1/2 → bi B ₂ → bi minor chl. alt.	Mo .25 Py .5	1P/1/10 1/2(A0)		85.0/14.9/	/	/		.029/		
105-110	/	/	Gd	↓ slightly finer gr.	Mo .10 Py .5			86.8/13.1/	/	/		.018/		
110-115	/	/	Gd	"	Mo .02 Py .5	1P/1/5 1/4(S)		85.2/14.8/	/	/	40°	.035/		
115-120	/	/	Gd	"	Mo .00 Py .5			87.5/12.5/	/	/		.080/		
120-125	/	/	Gd	"	Mo .02 Py .5	1C(1) 1P/1/11		85.1/14.9/	/	/	30°	.041/		
125-130	/	/	Gd	"	Mo .00 Py 1.0	1P/1/10 1/2(00)		82.3/17.7/	/	/		.017/		
130-135	/	/	Gd	back to medium grain Hb → bi B ₂ → bi	Mo .10 Py .5	2(S) 15/2/5		85.5/14.5/	/	/		.030/		
135-140	/	/	Gd	↓	Mo .10 Py .5	15/1/10 1/3(10)		84.1/15.9/	/	/		.059/		
140-145	/	/	Gd		Mo .01 Py .5	15/1/1 1/8(1)		84.2/15.8/	/	/		.047/		
145-150	/	/	Gd		Mo .00 Py .5			84.5/15.5/	/	/		.016/		

[Handwritten signature]

BOSS MOUNTAIN D.D.H. 76-13

SHEET 1

LAT. 41° 14' N COLL. ELEV. 5681.8' DIP 20° CORE NR. 102 LOGGER R. H. S.
 DEP. 457.8' E BEARING LENGTH 547' START, END Aug. 7 - Aug. 9

FOOTAGE	CORE RECOVERY	SLUDGE Rec % Mo	ROCK + STRUCTURES Gd, Qm, Rb, etc. a, r, b, etc.	ALTERATION bi, ch, ep, etc. Bi, Hb, Pc, etc.	METALLIC MINERALS Est. % Mo MoS ₂ , Py, Mag. etc.	GRAPHIC LOG	MOLY STRINGERS			OVER- SIZE Kg % Mo	UNDER- SIZE Kg % Mo	SEPARATION INDEX	% Mo. Core Core + Sludge	MISC.
							Type & No.	Total Width	% MoS ₂					
150-155	/	/	Gd.	46--7 bi 6i--7 bi	Mo tr. Py. 5	15/2/tr 1/4(tr)			84.4 /	15.6 /		.045 /		
155-160	/	/	Gd	minor - mod Kaol. inclusion	Mo tr. Py. 5	15/4/tr 1/4(tr)			.036 79.5	.092 20.5		.016 /		
160-165	/	/	Gd		Mo .02 Py. 5	15/8/10 1/8(10)			.013 85.6	.090 14.4		.031 /		
165-170	/	/	Gd		Mo .05 Py. 5	1(1) 1(1) 3p/2 1/2/1 1/8(20)			.027 80.8	.036 19.2	4° 4°	.030 /		
170-175	/	/	Gd		Mo .05 Py. 5	1/8(5) 1/8(30) 35/8/10 1/8(5)			.027 84.9	.041 15.1		.029 /		
175-180	/	/	Gd		Mo .02 Py. 5	15/10/15 1/8(15)			.027 83.6	.041 16.4		.029 /		
180-185	/	/	Gd		Mo tr. Py. 5	15/2/tr 1/4(tr)			.040 79.7	.150 20.3		.055 /		
185-190	/	/	Gd	micro chl. att.	Mo tr. Py. 5				.042 83.7	.045 16.3		.043 /		
190-195	/	/	Gd		Mo tr. Py. 1.0	1(tr) 1p/1/tr 15/3/tr 1/4(tr)			.035 95.9	.057 4.02	3°	.041 /		
195-200	/	/	Gd		Mo tr. Py. 5	15/1/tr 1(tr)			.047 82.7	.058 17.4		.047 /		
									.037 /	.076 /		.046 /		

G. H. S.

BOSS MOUNTAIN D.D.H. 76-13

SHEET 5

LAT. 41° 14' N COLL. ELEV. 5681.8' DIP 92° CORE NR. LOGGER B.M.E.
 DEP. 4317.8' E BEARING LENGTH 567' START, END Aug 7 - Aug 9

FOOTAGE	CORE RECOVERY	SLUDGE Rec. % Mo	ROCK + STRUCTURES Gd, Qm, Rb, etc. a, r, b, etc.	ALTERATION bi, ch, ep, etc. Bi, Hb, Pc, etc.	METALLIC MINERALS Est. % Mo MoS ₂ , Py, Mag. etc.	GRAPHIC LOG	MOLY STRINGERS			OVER- SIZE Kg % Mo	UNDER- SIZE Kg % Mo	SEPARATION INDEX	% Mo. Core Core + Sludge	MISC.
							Type & No.	Total Width	% MoS ₂					
200-205	/	/	Gd	Hb → bi Bi → bi	Mo .01 Py 1.0	1p/1/100 15/1/15 1/16(s) 1/16(oo)	85.3	14.7	0.029	0.040		0.031		
205-210	/	/	Gd	↓	Mo .06 Mag. 3 Py 5	1(s)	81.9	18.2	0.086	0.118		0.042		
210-215	/	/	Gd		Mo .08 Mag. 3 Py 5	1/2(oo) 35/1/16 1/16(oo) 1(s) 1p/3/100 3(oo)	84.3	15.7	0.101	0.580		0.176		
215-220	/	/	Gd		Mo .05 Mag. 4 Py 1.0	25/1/1/15 1(s) 1/16(s)	83.4	16.6	0.034	0.045		0.086		
220-225	/	/	Gd	slight chl. alt.	Mo .40 Py 5	1/4(20) 1/2(50) 15/1/4/20 1(tr) 2p/1/1/20	81.3	18.7	0.335	0.110	40°	0.480		
225-230	/	/	Gd	"	Mo .25 Py 5	2p/2/10 1/2(40) 1/2(tr)	84.1	15.9	0.040	0.047	50°	0.041		
230-235	/	/	Gd		Mo .10 Py 5	1/16(70) 2p/1/1/15 1(1)	85.9	14.0	0.036	0.165	40° 30°	0.054		
235-240	/	/	Gd		Mo .03 Py 5	1p/1/30 1/8(30)	84.5	15.5	0.035	0.074		0.049		
240-245	/	/	Gd	Hb → bi Bi → bi	Mo .10 Py 5	1/16(s) 1(7) 15/1/1/15 1p/1/17	84.9	15.0	0.059	0.10	40°	0.082		
245-250	/	/	Gd	↓	Mo .12 Py 1.0	1(s) 2p/1/4/15 1/2(s) 15/1/1/6 1/2(s)	74.9	20.4	0.032	0.105	30°	0.047		

[Handwritten signature]

BOSS MOUNTAIN D.D.H. 76-13

SHEET 6

LAT. 4101.4 'N COLL. ELEV. 5681.8' DIP 90° CORE NR. LOGGER B.M.C.
 DEP. 4312.8 'E BEARING LENGTH 567' START, END Aug. 7 → Aug. 9

FOOTAGE	CORE RECOVERY	SLUDGE Rec % Mo	ROCK + STRUCTURES Gd, Qm, Rb, etc. a, r, b, etc.	ALTERATION bi, ch, ep, etc. Bi, Hb, Pc, etc.	METALLIC MINERALS Est. % Mo MoS ₂ , Py, Mag. etc.	GRAPHIC LOG	MOLY STRINGERS			OVER- SIZE Kg % Mo	UNDER- SIZE Kg % Mo	SEPARATION INDEX	% Mo. Core + Sludge	MISC.
							Type & No.	Total Width	% MoS ₂					
250-255	/	/	Gd	Hb → bi Bc → bi	Mo .00 Py .5				84.7 / 15.2 /			.025 /		
255-260	/	/	Gd	↓ minor kaolinitization oxidation	Mo .06 Py .5		15 1/2 / 5 12 / 1.5 1/2 (s) 1 (s)		84.2 / 15.8 /			.044 / .025 /		
260-265	/	/	Gd	"	Mo .03 Py .5		17 / 1.1 1 (s)		87.0 / 12.9 /			.029 / .029 /		
265-270	/	/	Gd		Mo .00 Py .5		15 1/2 / 1.5 1/2 (tr)		84.9 / 15.0 /			.017 / .025 /		
270-275	/	/	Gd		Mo .01 Py .5		1 (tr) 1 (tr) 15 / 1.5 12 / 1.5		84.3 / 15.7 /			.035 / .037 /		
275-280	/	/	Gd		Mo .00 Py 1.0				81.1 / 18.9 /			.021 / .028 /		
280-285	/	/	Gd		Mo .00 Py .5				81.3 / 18.7 /			.061 / .073 /		
285-290	/	/	Gd		Mo .02 Py .5		1/8 (10) 24 / 3 1/5 1/8 (s)		83.9 / 16.0 /			.021 / .061 /		
290-295	/	/	Gd		Mo .04 Py .5		15 1/2 / 1.0 12 / 1.2 1/8 (10) 1/2 (2)		86.4 / 13.6 /			.020 / .057 /		
295-300	/	/	Gd		Mo .03 Py .5		1/2 (1) 1/8 (s) 1/2 (s) 25 1/2 / 5		82.6 / 17.4 /			.051 / .037 /		

[Handwritten signature]

BOSS MOUNTAIN D.D.H. 76-13

SHEET 7

LAT. 43° 14' N COLL. ELEV. 5681.8' DIP 90° CORE NO. LOGGER B.M.C.
 DEP. 4317.8' E BEARING LENGTH 547' START, END Aug 7 - Aug 9

FOOTAGE	CORE RECOVERY	SLUDGE Rec / % Mo	ROCK + STRUCTURES Gd, Qm, Rb, etc. a, r, b, etc.	ALTERATION bi, ch, ep, etc. Bi, Hb, Pc, etc.	METALLIC MINERALS Est. % Mo MoS ₂ , Py, Mag. etc.	GRAPHIC LOG	MOLY STRINGERS			OVER-SIZE Kg / % Mo	UNDER-SIZE Kg / % Mo	SEPARATION INDEX	% Mo. Core / Core + Sludge	MISC.
							Type & No.	Total Width	% MoS ₂					
22-305	/	/	Gd	Bi → Bi Bi → Bi	Mo .30 Py .5	2/15 1/2(1) 3P/2 1/10 1(5) 35/2 1/30 1/2(20) 1/2(100) 1/2(100)		80.5 / 17.5		40°	.443			
25-310	/	/	Gd	↓	Mo .04 Py .5	1/2(1) 15/4 1/1 1/2(5) 1/2(5)		79.9 / 20.1		45°	.056	.249		
27-315	/	/	Gd		Mo 1/2 Py .5	1/2(1/2) 15/2 1/4 1/2(1/2) 1/2(1/2)		79.1 / 20.9			.051			
28-320	/	/	Gd		Mo .12 Py .5	1/2(20) 1/2(10) 33/13 1/15 1/2(100)		81.8 / 18.2			.075	.053		
30-325	/	/	Gd		Mo 1/2 Py .5	1/2(1/2) 1/2(1/2) 25/18 1/4		81.2 / 18.8			.070	.022		
32-330	/	/	Gd		Mo .05 Py .5	15/4 1/10 1/2(10)		81.2 / 18.8			.025	.025		
33-335	/	/	Gd		Mo .00 Py .5			80.8 / 19.2			.018	.013		
35-340	/	/	Gd		Mo .00 Py .5			80.1 / 19.9			.024	.020		
34-345	/	/	Gd		Mo .00 Py .5	1P/1/100 15/2 1/100 1(100) 1/2(100)		82.7 / 17.3			.011	.008		
34-350	/	/	Gd		Mo .15 Py .5	1P/13/10 15/2 1/5 1/2(100) 1/2(5) 1/2(5)		85.1 / 14.9		35°	.072	.059		

[Handwritten signature]

BOSS MOUNTAIN D.D.H. 76-13

SHEET 8

LAT. 41° 01.4' N COLL. ELEV. 5768.15' DIP 95° CORE NR. LOGGER B.M.C.
 DEP. 4317.8' E BEARING LENGTH 547' START, END Aug. 7 → Aug. 9

FOOTAGE	CORE RECOVERY	SLUDGE Rec / % Mo	ROCK + STRUCTURES Gd, Qm, Rb, etc. a, r, b, etc.	ALTERATION bi, ch, ep, etc. Bi, Hb, Pc, etc.	METALLIC MINERALS Est. % Mo MoS ₂ , Py, Mag. etc.	GRAPHIC LOG	MOLY STRINGERS		OVER-SIZE Kg / % Mo	UNDER-SIZE Kg / % Mo	SEPARATION INDEX	% Mo. Core / Core + Sludge	MISC.
							Type & No.	Total Width % MoS ₂					
350-355	/	/	Gd	H ₆ → bi B ₆ → bc	Mo .02 Py .5	1/8(10) 15/1/10		81.4 / .039	18.6 / .116		.053 /		
355-360	/	/	Gd	minor chl. alt.	Mo .06 Py .5	1/4(15) 1/2(5) 35/1/5 1/4(100)		83.5 / .020	16.5 / .120		.045 / .049		
360-365	/	/	Gd.	mod. chl. alt	Mo .06 Py .5	15/1/10 1/8(10)		83.2 / .063	16.8 / .140		.076 /		
365-370	/	/	Gd	minor-mod. chl. alt.	Mo .06 Py .5	1/8(10) 15/1/10 1/4(10) 3(10)		84.2 / .046	15.7 / .072		.050 / .053		
370-375	/	/	Gd	minor chl. alt	Mo .08 Py .5	15/1/100 1/4(100)		83.9 / .070	16.9 / .210		.094 /		
375-380	/	/	Gd	minor chl. alt some kaolinization	Mo .06 Py .5	15/1/30 1/8(10)		86.7 / .030	13.3 / .071		.035 / .055		
380-385	/	/	Gd		Mo .30 Py .5	15/1/5 1/4(5)		81.5 / .059	18.5 / .070		.061 /		
385-390	/	/	Gd.		Mo .00 Py .5	2P/1/100 1/4(100) 1/2(100)		83.2 / .035	16.8 / .080		.045 / .053		
390-395	/	/	Gd	slight chl. alt.	Mo .00 Py .5	1/4(100) 1P/1/100		85.1 / .020	14.9 / .040		.033 /		
395-400	/	/	Gd	"	Mo .15 Py .5	1/2(15) 1P/1/15 15/1/15 1/2(15)		86.8 / .101	13.2 / .210	45°	.115 / .067		

[Handwritten signature]

BOSS MOUNTAIN D.D.H. 76-13

SHEET 2

LAT. 41° 01.4' N COLL. ELEV. 5681.8' DIP 90° CORE NR. LOGGER B.A.P.
 DEP. 4317.8' E BEARING LENGTH 567' START, END Aug. 7 - Aug. 9

FOOTAGE	CORE RECOVERY	SLUDGE Rec % Mo	ROCK + STRUCTURES Gd, Qm, Rb, etc. a, r, b, etc.	ALTERATION bi, ch, ep, etc. Bi, Hb, Pc, etc.	METALLIC MINERALS Est. % Mo MoS ₂ , Py, Mag. etc.	GRAPHIC LOG	MOLY STRINGERS			OVER- SIZE Kg % Mo	UNDER- SIZE Kg % Mo	SEPARATION INDEX	% Mo. Core Core + Sludge	MISC.
							Type No.	Total Width	% MoS ₂					
400-405	/	/	Gd	Hb → bi Bi → bi	Mo .10 Py .5	15/1/10 1(10)	84.5/	15.5/	0.56	1.109		.064		
405-410	/	/	Gd	↓	Mo tr Py .5	15/1/4 tr 1/2(4)	81.7/	18.3/	1.031	1.032		.031		
410-415	/	/	Gd		Mo tr Py .5	15/1/4 tr 1/2(4)	83.3/	16.6/	1.029	1.042		.031		
415-420	/	/	Gd		Mo .08 Py .5	25/1/5 1/2(5) 1(5)	83.4/	16.6/	1.066	1.142		.079		
420-425	/	/	Gd	K-spar alt.	Mo tr Py 1.0		84.4/	15.6/	1.008	1.019		.010		
425-430	/	/	Gd		Mo .20 Py 1.0	1/2(1) 1/2(20) 2p/1/10 15/1/4/20 1/4(20)	80.4/	19.6/	1.167	1.449	50°	.222		
430-435	/	/	Gd	minor chl. alt	Mo .12 Py 1.0	1/8(100) 1/6(50) 23/1/8/75	82.5/	17.5/	1.071	1.143		.084		
435-440	/	/	Gd		Mo tr Py .5	1/2(100) 1p/1/100	83.7/	16.3/	1.006	1.014	45°	.057		
440-445	/	/	Gd		Mo .15 Py .5	1 1/2(7) 1/8(100) 1p/1 1/2/7 15/1/8/100	87.4/	12.6/	1.083	1.173	45°	.094		
445-450	/	/	Gd	Hb → bi Bi → bi	Mo tr Py .5		81.0/	18.9/	1.005	1.010		.006		

[Handwritten signature]

BOSS MOUNTAIN D.D.H. 76-13

SHEET 19

LAT. 41° 01' 4" N COLL. ELEV. 5681.8' DIP 25° CORE NO. LOGGER B.H.C.

DEP. 4317.8' E BEARING LENGTH 567' START, END Aug 7 → Aug 9

FOOTAGE	CORE RECOVERY	SLUDGE Rec / % Mo	ROCK + STRUCTURES Gd, Qm, Rb, etc. a, r, b, etc.	ALTERATION bi, ch, ep, etc. Bi, Hb, Pc, etc.	METALLIC MINERALS Est. % Mo MoS ₂ , Py, Mag. etc.	GRAPHIC LOG	MOLY STRINGERS		OVER-SIZE Kg / % Mo	UNDER-SIZE Kg / % Mo	SEPARATION INDEX	% Mo. Core / Core + Sludge	MISC.
							Type & No.	Total Width / % MoS ₂					
150-455	/	/	Gd	Hb --> bi Bi --> bi	Mo .00 Py .5	1/8(100) 15/1/100		81.6 / 18.4			.012		
455-460	/	/	Gd	↓	Mo .05 Py .5	1/8(100) 15/1/100 20/1/3 1/2(100) 1/2(5)		80.3 / 19.7		30° 30°	.061 .037		
460-465	/	/	Gd		Mo .00 Py .5	1/4(100) 15/1/100		79.9 / 20.1			.054		
465-470	/	/	Gd		Mo 1/4 Py .5	25/3/1/1 1/8(1/1) 1/4(1/1)		83.2 / 16.8			.017 .031		
470-475	/	/	Gd	minor Redinization	Mo .03 Mag. 3 Garnet Py .5	35/8/5 1/8(1) 1/4(1) 1/4(20)		83.4 / 16.6			.046		
475-480	/	/	Gd		Mo .03 Py .5	1/2(1) 25/2/1 1/2(1) 10/3/100 3/4(100)		79.8 / 20.2		30°	.030 .038		
480-485	/	/	Gd		Mo .08 Py .5	2(1) 10/2/1 1/8(20) 35/2/15 1/8(10) 1/8(15)		86.9 / 13.1			.043		
485-490	/	/	Gd		Mo .10 Py .5	25/1/1/5 1/8(5) 1(5)		83.9 / 16.1			.037 .032		
490-495	/	/	Gd		Mo .20 Py .5	1/4(5) 45/1/10 1/4(5) 1/2(15) 1/4(10)		85.2 / 14.8			.083		
495-500	/	/	Gd		Mo .15 Py .5	1/2(10) 25/1/7 1/2(5) 10/1/20 1/4(20)		82.4 / 17.6			.084 .084		

[Handwritten signature]

BOSS MOUNTAIN D.D.H. 76.13

SHEET 11

LAT. 41° 21.4' N COLL. ELEV. 5681.2' DIP 90° CORE NR. LOGGER B.M.C.

DEP. 4317.8' E BEARING LENGTH 567' START, END Aug 7 → Aug 9

FOOTAGE	CORE RECOVERY	SLUDGE Rec % Mo	ROCK + STRUCTURES Gd, Qm, Rb, etc. a, r, b, etc.	ALTERATION bi, ch, ep, etc. Bi, Hb, Pc, etc.	METALLIC MINERALS Est. % Mo MoS ₂ , Py, Mag. etc.	GRAPHIC LOG	MOLY STRINGERS			OVER- SIZE Kg % Mo	UNDER- SIZE Kg % Mo	SEPARATION INDEX	% Mo. Core + Sludge	MISC.
							Type & No.	Total Width	% MoS ₂					
500-505	/	/	Gd	minor chl. off Mb → bi Bi → bi	Mo .02 Py .5	15/1/10			84.1/	15.9/		.019/		
505-510	/	/	Gd	↓	Mo .06 Py .5	1/8(10) 1/4(15) 1/8(10)			82.9/	17.1/		.027/		
510-515	/	/	Gd		Mo .08 Py .5	1/2(10)			84.5/	15.5/		.064/		
515-520	/	/	Gd		Mo .03 Py .5	1/2(5) 15/1/5			83.6/	16.4/		.114/		
520-525	/	/	Gd		Mo .00 Py 1.0				83.3/	16.7/		.010/		
525-530	/	/	Gd		Mo .01 Py .5	1/10(15) 15/1/5			86.5/	13.5/		.016/		
530-535	/	/	Gd		Mo .00 Py 1.0				85.4/	14.6/		.010/		
535-540	/	/	Gd		Mo .03 Py 1.0	1/10(5) 1/2(5)			86.2/	13.8/		.050/		
540-545	/	/	Gd		Mo .08 Py 1.0	1/4(5) 1/10(50)			83.3/	16.4/		.019/		
545-550	/	/	Gd		Mo .00 Py .5	1/10(5) 15/1/50			84.2/	15.5/		.020/		
550-555	/	/	Gd		Mo .00 Py .5				84.2/	15.5/		.019/		

[Handwritten signature]



November 12, 1976

Statement of Qualification

I, Arnold R. Pollmer, am an employee of Noranda Mines Ltd., Boss Mountain Division. I hold a B.Sc. in Geology obtained at Wisconsin State University, 1972.

The report and drill logs submitted are correct to the best of my knowledge. The two drill logs submitted are part of a surface diamond drill hole program conducted at Boss Mountain Mine during July 16th to August 28th, 1976.

All of the core was used for assay analysis. Storage of the crushed core is presently on location in plastic bags containing five foot intervals.

Respectfully

A handwritten signature in cursive script, appearing to read "A.R. Pollmer". The signature is written in dark ink and is positioned above the printed name.

A.R. Pollmer

VANCOUVER
PHONE 736-2641
(04-508557)
KAMLOOPS
PHONE 373-1152
(0488154)



THE TONTO GROUP OF COMPANIES

SHEPHERD ENTERPRISES LTD.
1215 West 7th. Avenue,
VANCOUVER, B.C. V6H 1B7

COUNT WITH

Mining Corporation of Canada Ltd.,
P. O. Box 2007,
South Porcupine, Ontario
P0N 1H0

CONTRACT NO. 170

INVOICE NO. 4005

DATE August 11, 1976

RTY

Boss Mountain

July 16

TO July 31, 1976

Rig	Hole #	Depth		Net Footage	Hole Size	Price	
		From	To			Per Foot	Total
38-3	76-5	0	18	18	NW	10.50	189.00
		18	407	389	NQ	10.50	4,084.50
	76-7	0	16	16	NW	10.50	168.00
		16	387	371	NQ	10.50	3,895.50
38-7	76-1	0	20	20	NW	10.50	210.00
		20	527	507	NQ	10.50	5,323.50
	76-2	0	5	5	NW	10.50	52.50
		5	536	531	NQ	10.50	5,575.50
	76-3	0	10	10	NW	10.50	105.00
		10	567	557	NQ	10.50	5,848.50
	76-4	0	16	16	NW	10.50	168.00
		16	600	584	NQ	10.50	6,237.00
	76-6	0	6	6	NW	10.50	63.00
		6	487	481	NQ	10.50	5,050.50
				3511	\$36,865.50		

o.b. 77
cored 3434
3511

VANCOUVER
 TELEPHONE 736-2641
 TELEX 04-508557
 KAMLOOPS
 TELEPHONE 374-1152
 TELEX 0488154



THE TONTO GROUP OF COMPANIES

SHEPHERD ENTERPRISES LTD.
 1215 West 7th Avenue
 VANCOUVER, B.C. V6H 1B7

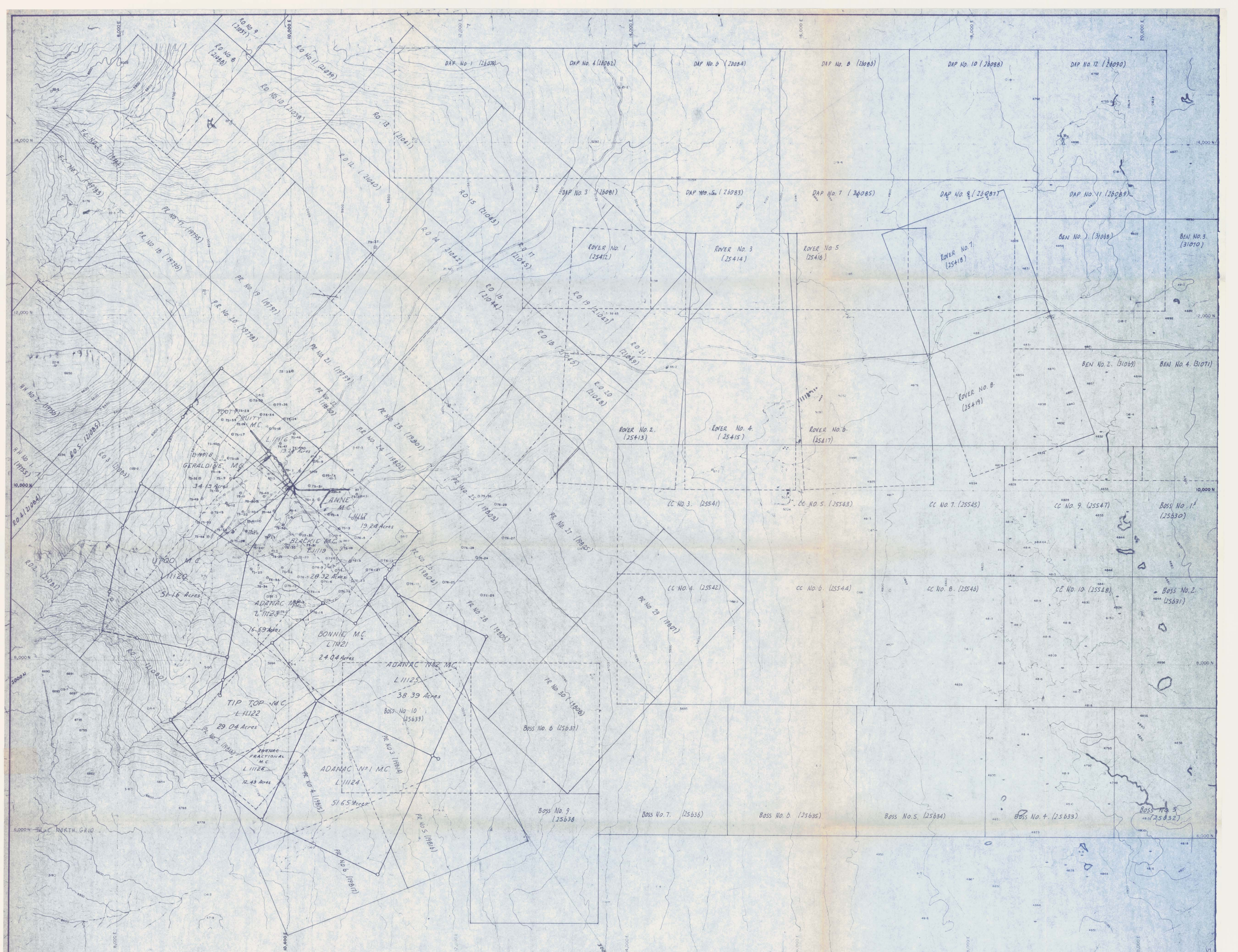
IN ACCOUNT WITH

Mining Corporation of Canada Ltd.
 P.O. Box 2007
 South Porcupine, Ontario
 P0N 1H0

CONTRACT NO. 170
 INVOICE NO. 4016
 DATE August 24, 1976
 TO August 15, 1976

PROPERTY Boss Mountain

Rig	Hole No.	Depth		Net Footage	Hole Size	Price Per Foot	Total
		From	To				
38-3	76-7	387	537 /	150	NQ	10.50	1,575.00
	76-9	0	14	14	NW	10.50	147.00
		14	506 /	492	NQ	10.50	5,166.00
	76-11	0	12	12	NW	10.50	126.00
		12	547 /	535	NQ	10.50	5,617.50
	76-13	0	8	8	NW	10.50	84.00
		8	567 /	559	NQ	10.50	5,869.50
	76-14	0	12	12	NW	10.50	126.00
		12	547 /	535	NQ	10.50	5,617.50
	76-16	0	8	8	NW	10.50	84.00
		8	547 /	539	NQ	10.50	5,659.50
	76-17	0	33	33	NW	10.50	346.50
		33	547 /	514	NQ	10.50	5,397.00
	76-19	0	12	12	NW	10.50	126.00
12		167 /	155	NQ	10.50	1,627.50	
38-5	76-6	487	537 /	50	NQ	10.50	525.00
	76-8	0	5	5	NW	10.50	52.50
		5	477 /	472	NQ	10.50	4,956.00
	76-10	0	7	7	NW	10.50	73.50
		7	297 /	290	NQ	10.50	3,045.00
	76-12	0	5	5	NW	10.50	52.50
		5	507 /	502	NQ	10.50	5,271.00
	76-15	0	10	10	NW	10.50	105.00
10		677 /	667	NQ	10.50	7,003.50	
76-18	0	20	20	NW	10.50	210.00	
	20	197	177	NQ	10.50	1,858.50	
				5783'			
				OB	146		
				CORED	5637		
					5783		
							\$ 60,721.50



5000 E / 5000 N Mine Grid Corresponds To 10,000 E / 10,000 N True North Grid

6081
 MINERAL RESOURCES BRANCH
 ASSESSMENT REPORT
 NO. **6081**
 MAP NO. **#1**

NORANDA MINES (BOSS MTN.)

CLAIM LOCATION PLAN

Scale: 1"=400' Date 20/1/76 Drawn By: RHM
 revised 19/11/76