

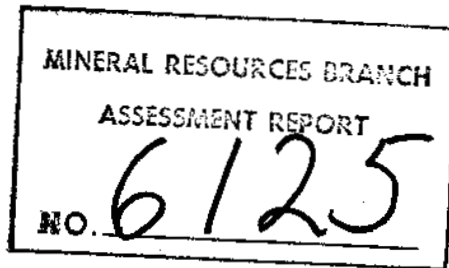
The Agnes & Jennie Mining Co. Ltd.

203 - 1209 EAST FOURTH STREET, NORTH VANCOUVER, B.C., V7J 1B8 (604) 985-1233

TABLE OF CONTENTS

This report contains:

-Index map.....	A
-Surface plan.....	B
-Diamond drill logs 18 holes.....	C
-Total costs incurred.....	D
-Proof of total costs incurred.....	E
-Drilling contract.....	F
-Core storage location.....	G
-Total metres drilled.....	G
-Total cost/M drilled.....	G



6125

- █ UP M.C. (5 UNITS)
- █ SNO M.C. (6 UNITS)
- █ FG #1 + FG #2 M.C.'S (2 UNITS)
- █ KAT M.C. (4 UNITS)
- █ SUN M.C. (8 UNITS)
- ⊙ LCP
- CLAIM POST

A

A

INDEX MAP

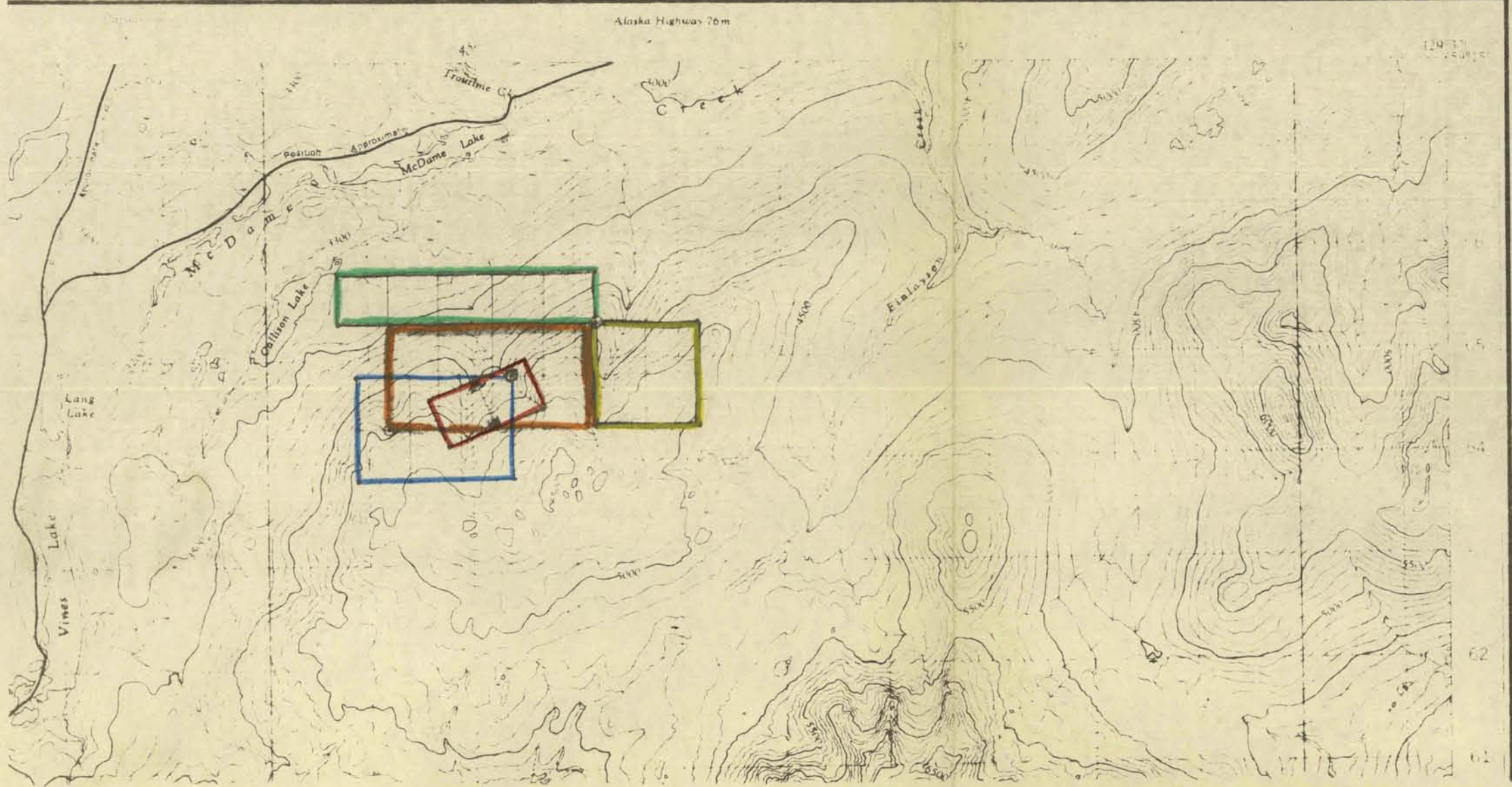
SCALE 1:50,000

DA

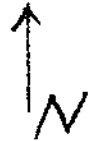
PROVISIONAL MAP

FIRST EDITION

SHEET 104 P/4



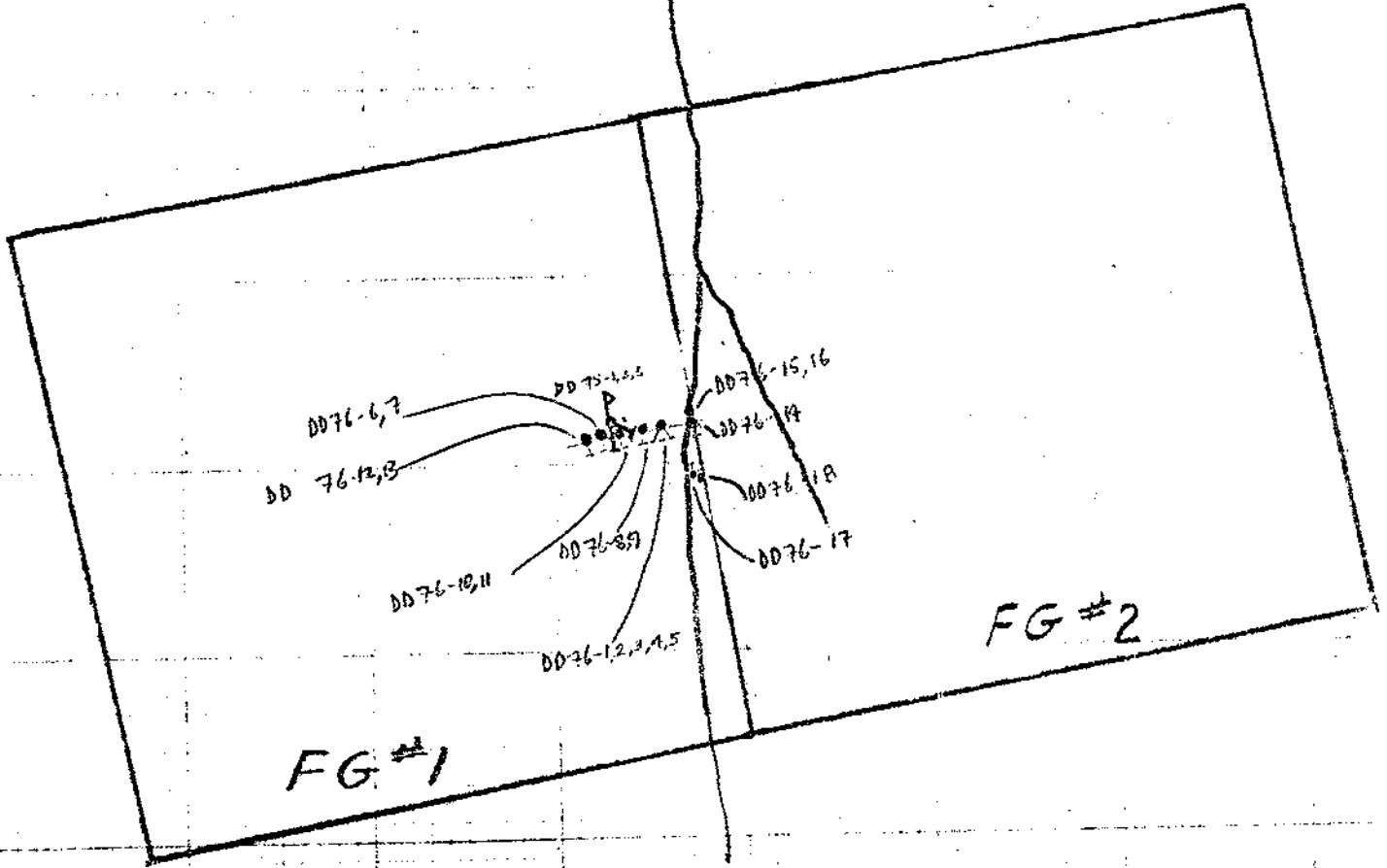
B



SCALE 1" = 150M

SURFACE PLAN.

ERICSSON CR



FG #1

FG #2

01/10

D

TOTAL COSTS INCURRED..... \$24,196.33

E

Salisbury & Dietz

1410 1st Ave. S.W. - Seattle, Washington 98103
Phone: 532-8874

PT / NED
269

Geologic Consulting
Exploration Services
Portable Diamond Drilling

August 3, 1976

STATEMENT

To: Nu-Energy Development Corporation
Suite 203
1209 East Fourth Street
North Vancouver, B.C. V7J 1G8
Canada

Attn: Dave Ross

For: IEX size Diamond Drilling on your property near CASSIAR,
BRITISH COLUMBIA as per contract dated March 9, 1976 for

Mobilization-demobilization lump sum \$ 3,213.92

Hole No.	From	To	Footage	Rate	
DDH-76-1	0.0'	50.5'	50.5'	\$15.75	795.38
DDH-76-2	0.0'	75.0'	75.0'	15.75	1,181.25
DDH-76-3	0.0'	83.0'	83.0'	15.75	1,307.25
DDH-76-4	0.0'	58.5'	58.5'	15.75	921.38
DDH-76-5	0.0'	71.5'	71.5'	15.75	1,126.13
DDH-76-6	0.0'	73.5'	73.5'	15.75	1,157.63
DDH-76-7	0.0'	97.0'	97.0'	15.75	1,527.75
DDH-76-8A	0.0'	13.0'	13.0'	15.75	204.75
DDH-76-8	0.0'	56.0'	56.0'	15.75	882.00
DDH-76-9	0.0'	78.0'	78.0'	15.75	1,228.50
Total Footage			656.0'	Subtotal	13,545.94

Additional charge for casing drilled in excess of 15 ft.

Hole No.	From	To	Footage	Rate	
DDH-76-1	15.0'	19.0'	4.0'	\$ 2.50	10.00
DDH-76-2	15.0'	19.0'	4.0'	2.50	10.00
DDH-76-3	15.0'	22.0'	7.0'	2.50	17.50
DDH-76-4	15.0'	18.5'	3.5'	2.50	8.75
DDH-76-5	15.0'	19.0'	4.0'	2.50	10.00

Nu-Energy Development Corporation
Dave Ross
August 3, 1976

Page 2 of 2

<u>Hole No.</u>	<u>From</u>	<u>To</u>	<u>Footage</u>	<u>Rate</u>	
DDH-76-6	15.0'	36.0'	21.0'	\$ 2.50	52.50
DDH-76-7	15.0'	33.0'	18.0'	2.50	45.00
DDH-76-8	15.0'	24.5'	9.5'	2.50	23.75
DDH-76-9	15.0'	21.0'	6.0'	2.50	15.00
1 case Quik Trol @ \$60.11 case					60.11

TOTAL DUE \$13,798.55

Salisbury & Dietz

10400 Washington 99203

1974

Geologic Consulting
Exploration Services
Portable Diamond Drilling

August 18, 1976

STATEMENT

To: Nu-Energy Development Corporation
Suite 203
1209 East Fourth Street
North Vancouver, B.C. V7J 1G8
Canada

NED paid

Attn: Dave Ross

For: IEX size Diamond Drilling through August 17, 1976 on your property near CASSIAR, BRITISH COLUMBIA as per contract dated March 9, 1976.

<u>Hole No.</u>	<u>From</u>	<u>To</u>	<u>Footage</u>	<u>Rate</u>	
DDH-76-10	0.0'	71.5'	71.5'	\$15.75	\$1,126.13
DDH-76-11	0.0'	82.0'	82.0'	15.75	1,291.50
DDH-76-12	0.0'	72.0'	72.0'	15.75	1,134.00
DDH-76-13	0.0'	53.5'	53.5'	15.75	842.63
DDH-76-14	0.0'	60.5'	60.5'	15.75	952.88
DDH-76-15	0.0'	34.5'	34.5'	15.75	543.38
DDH-76-16	0.0'	45.0'	45.0'	15.75	708.75
			<u>419.0'</u>		<u>6,599.27</u>

Additional charge for casing drilled in excess of 15 ft.

<u>Hole No.</u>	<u>From</u>	<u>To</u>	<u>Footage</u>	<u>Rate</u>	
DDH-76-10	15.0'	21.0'	6.0'	\$ 2.50	15.00
DDH-76-12	15.0'	21.0'	6.0'	2.50	15.00
DDH-76-13	15.0'	18.0'	3.0'	2.50	7.50

TOTAL DUE \$6,636.77

Salisbury & Dietz

E. 4400 Glenrose Spokane, Washington 99203

(509) 535-8874

Geologic Consulting
Exploration Services
Portable Diamond Drilling

September 9, 1976

S T A T E M E N T

To: Nu-Energy Development Corporation
Suite 203
1209 E. fourth Street
North Vancouver, B.C. V7J 1GB
Canada

Attn: Dave Ross

For: IEX Diamond drilling through August 23, 1976 (end of project)
on your property near Cassiar, British Columbia as per
contract dated March 9, 1976.

<u>Hole No.</u>	<u>From</u>	<u>To</u>	<u>Footage</u>	<u>Rate</u>	
DDH 76-17	0.0	100.0	100.0	\$ 15.75	\$ 1575.00
DDH 76-18A	0.0	10.0	10.0	15.75	157.50
DDH 76-18	0.0	120.0	120.0	15.75	1890.00
			<u>230.0</u>		<u>\$ 3622.50</u>

1 case Quik Trol @ \$ 66.00	66.00
500 ft. 3/4" black poly pipe @ \$ 4.80/ 100 ft.	24.00
1 ea. 3' EX casing (hole 18A)@ \$ 13.75	13.75
	<u>\$ 3726.35</u>

Previous Balance 34.76

TOTAL DUE \$ 3761.01

NED paid

Breakdown On Mobilization Costs

Round trip air fare, Spokane-Watson Lake	\$297.31	
two men		\$ 594.62
Roundtrip Airfreight equipment Spokane - Watson Lake		1819.30
Salary and living expenses travel time (4 crew days)		<u>800.00</u>
		\$ 3213.92

ajm

G

CORE STORAGE LOCATION:

-in core racks, approximately 10 Metres (30 ft)
south of drill setup used for DDH 76-1,2,3;
on FG #1 M.C., mapsheet 104P/4E

Total Metres Drilled:

-397.8M (1305 ft)

TOTAL COST PER METRE DRILLED:

-\$60.83/M (\$18.54/ft)

Kristian Ross

13/12/76

KRISTIAN ROSS

6125

C

Co-Ords:	<i>The Agnes & Jennie Mining Co. Ltd.</i>	Hole No. DD-76-1
Azimuth: S 15° W	Diamond Drill Record	Property: Agnes & Jennie Mining Co. Ltd.
Dip: - 45°	Drill Type & Size: <i>AEX</i>	Location: Erickson Ck., Cassiar
Elevation: 4,470 ft. <i>1362.45</i>	<i>FOOTAGE TYPED; METRES PRINTED.</i>	Date Started: 8th July '76
Length: 50.5 ft. <i>15.39</i>		Date Completed: 11th July '76
Section:		Logged By: TBS
Purpose:		Date Logged: 10th July '76

Footage/Metres		Description	Sample No.	Footage/Metres		Length		
From	To			from	to			
0	16.0	OVERBURDEN: (casing 0 - 18)						
16.0	17.0	Broken core: 16 - 16.5 <i>4.1-5.0</i> sheared buff and green tuffaceous						
<i>4.9</i>	<i>5.2</i>	rock with rusty fractures. 16.5 - 17.0 <i>5.0-5.2</i> white q. with						
		occas. py cubes with patches of limonite material in fractures;						
		minute fleck of malachite.						
17.0	18.0	White quartz with graphitic bands 15° to core; minute flecks						
<i>5.2</i>	<i>5.5</i>	of malachite at 17 ft; occas. py in hard banded rk with much						
		limonite; minor tetrahedrite in quartz. q stringers oblique						
		to schistosity.						
18.0	31.8	ARGILLACEOUS (+ TUFF?): closely banded cleaved rock; siliceous;						
<i>5.5</i>	<i>9.7</i>	alternating brown and blackish bands with irregular elongated						
		fragments along cleavages; c.a. 60°. 1/8" - 1/32". <i>.003-.0008</i>						
		20.5 ft. py at 21'8" <i>6.64</i> and 22' <i>6.65</i> . Veinlets displaced by						
		fracturing. Two generations of q veining. Large rusted py						
		crystals at 22'2" <i>6.76</i> a few unaltered. V. minor malachite						
<i>9.7</i>	<i>9.88</i>	flecks at 27' <i>on fr. plane.</i>						
31.8	32.4	WHITE QUARTZ - minute py crystals						
32.4	33.0	Broken core. BANDED TUFF: Siliceous grey and pale brown;						
<i>9.88</i>	<i>10.05</i>	rather massive. Brown to pale brown in irregular patches; well-						
		developed py crystals scattered through the rock.						
33.0	37.0	ARGILLACEOUS (TUFF) AND WHITE QUARTZ: closely fractured w.						
<i>10.05</i>	<i>11.28</i>	shears. dark grey in colour; up to 5% well-dev. py cryst.						
		White quartz bands with 1% pyl in 5" vein. q. v. at 33 - 33'4"						
		<i>10.05-10.18, 33'9" - 34.0', 10.33-10.36 34'1" - 34'7" 10.39 - 10.58</i>						

Footage/Metres		Description	Sample No.	Footage/Metres		Length		
From	To			from	to			
37.0	44.5	WHITE QUARTZ: ankerite patches and stringers - pale brown colour. 37' - 38' 11.28 - 11.58 mainly white quartz with minor patches of siliceous dark-grey argill. fr. c. rk; well-defined py crystals and patches 5%. Lesser py in white quartz 1%						
11.28	13.56	38' - 38' 3" 11.58 - 11.67 broken core, c. rk. and quartz fragments.						
		38' 4" - 40.0' 11.7 - 12.19 white quartz with rusty fractures.						
		38' 6" - 38' 11" 11.72 - 11.86 tetrahedrite along plane of fr. Tetrahedrite 1% at 40' 12.19 in q-ankerite with small malachite stains; tetrahedrite in fractures 40 - 40' 2" 12.19 - 12.24 broken white quartz; 40.2 - 40.6" 12.24 - 12.37 white quartz; irredescent sulphide chalcopy ? along fine stringers dark blue-black in colour.						
		Some tiny rusty cavities with py and a few irregular flecks of GOLD. Tetrahedrite 1% in v. small rusty cavities. Some brown-staining of quartz. 43' 3" 13.19 irredescent sulphide on fracture (py.) 2" 5.08 patch of siliceous bluish-black rock within vein with malachite staining.						
44.5	50.5	ARGILLITE: bluish-black, graphitic. c.a. 50° - 60° Fine stringers of quartz cutting and concordant with cleavage planes. Quartz blebs and "augen". Some intermittent grey-green colour concordant quartz lenses. Rock somewhat fractured with shearing of small veins in turnout by other q stringers. Some pale pink feldspar ? lenses w. white quartz. Pyrite to 5% (variable) through the rock as patches and lenses parallel to the cleavage planes and along stringers of quartz.						
13.56	15.39							
50.5	15.39	END OF HOLE						

Co-Ords:
 Azimuth: S 15° W
 Dip: - 65° S
 Elevation: 4,470 ft. 1362.45
 Length: 75.0 ft. 22.86
 Section:
 Purpose:

The Agnes & Jennie Mining Co. Ltd.

Diamond Drill Record

Hole No. DD-76-2
 Property: Agnes & Jennie Mining Co. Ltd.
 Location: Erickson Ck., Cassiar
 Date Started: 11th July '76
 Date Completed: 13th July '76
 Logged By: TBS
 Date Logged: 12th & 13th July '76

Footage/Metres		Description	Sample No.	Footage/Metres		Length
From	To			from	to	
0	18.5	Casing				
18.5	19.3	Broken Core: WHITE QUARTZ and minor argillaceous material; at 18'9" flecks of GOLD along a quartz stringer with enc. q mass.				
5.64	5.88	Minor chalcopryrite in cavities in quartz (over a 1" ^{2.54} length)				
19.3	45.0	ARGILLACEOUS TUFF: banded, siliceous bluish-black in colour with bands of quartz and fine stringers; also as irregular patches fractures av. 60° to core; sheared; py 1% as small irregular patches. (VOID 25.9' to 30.0') (7.89 - 9.14)				
5.88	13.72	30'10" - 31'8" 9.39 - 9.66 white quartz w. limonite stained fracture planes and bands of dark mineral. At 41'1" - 41'5" 12.53 - 12.65 a 2" ^{5.08} q. v. 15° to core. At 46'6" 14.7 a 1/2" q stringer 30° to core. 34'5" - 35' 10.52 - 10.67 fragments of q in limonitic c. rk.				
		43'10" - 44'2" a 1/2" ^{1.27} q. v. c.a. 15°; 44.8' - 44'11" 15.66 - 13.69 1/2" 13.38 q. v. 13.4° c.a. 30°.				
45.0	55.9	ARGILLACEOUS TUFF: highly silicified with much replacement of rock by quartz; fractured, with fr. planes freq. stained with MALACHITE from sulphide with brownish-red coating and in fine dissem. small irreg. patches (1%). Chalcopy ?				
13.72	17.04	48'4" - 49'4" 14.75 - 15.06 similar but with less malachite staining, less sulphide. 49'4" - 49'10" 15.06 - 15.21. Quartz, with scattered, irregular small granular patches of py; rock somewhat banded; 49'10" - 54'6" silicified argillitic tuff as above with with fractured q stringers and bands; fractured with variable malachite staining with small irreg. brown-coated sulphide				

Footage/Metres		Description	Sample No.	Footage/Metres		Length		
From	To			from	to			
		patches, and scattered yellow large crystals of pyrite. (1%) at 55'5" ^{16.92} a 1" ^{1.54} q vein.						
55.9	66.5	QUARTZ VEIN: to 56'2" ^{17.13} as above with q veinlets along core						
17.04	20.27	with malachite & py. Country rock included in vein, 56'5" ^{17.21} - 56'8": ^{17.31} 56'8" - 61'9" ^{17.31-18.25} white quartz, with tetrahedrite, dark grey fine crystal clusters 1% at 57'4" ^{17.49} as sporadic clusters in sometimes malachite-stained cavities. Occas. specks of sulphide in malachite-stained fractures; 59'11" - 60'3" tetrahedrite associated with free gold flakes in cavities in the quartz. 60'4" - 60'7" tetrahedrite assoc. with fractures and cavities and free GOLD as ragged flakes 1/32" - 1/10" ^{0.125 cm - 0.25 cm} Quartz fractured irreg. and lined with dark mineral. Minor ankerite & limonite stained cracks. Possible dark mica in the darker material. 61'9" - 62'2"; ^{18.28} broken core; country rock & quartz-feldspar? frags. 62'6" - 66'6" quartz veining, minor tetrahedrite and pyrite in veinlets at 62'7". Inclusions of country rock.						
66.5	66.7	Broken core. Siliceous argillaceous rock with fractured quartz. stringers.						
20.27	20.33							
66.7	72.5	ARGILLITE: silicified, & with irregular masses of quartz & a great number of quartz stringers. Rock sheared with dis- placement of the stringers.						
20.33	22.10							
72.5	75.0	Brecciated rock: quartz and feldspar ? material included in dark argillaceous matrix - fractured & sheared.						
22.10	22.86							
75.0		END OF HOLE						
22.86								

Co-Ords:
 Azimuth: S 25° E
 Dip: - 65° S
 Elevation: 4,470 1362.45
 Length: 33.0 ft. 10.06
 Section:
 Purpose:

The Agnes & Jennie Mining Co. Ltd.

Diamond Drill Record

Hole No DD-76-3
 Property: Agnes & Jennie Mining Co. Ltd.
 Location: Erickson Ck., Cassiar
 Date Started: 13th July '76
 Date Completed: 14th July '76
 Logged By: TBS
 Date Logged: 13th & 14th July '76

Footage/Metres From	To	Description	Sample No.	Footage/Metres		Length		
				from	to			
0	16.0487	CASING						
4.87	16.0	16.5503 QUARTZ: white fractured, limonite-stained.						
5.03	16.5	21.064 Broken core: quartz and py argillite						
6.4	21.0	24.5747 BANDED ARGILLITIC TUFF: q lines parallel cleavage, and as veinlets rock fractured and silicified. Sporadic py spots 1% c.a. 60°						
7.47	24.5	27.0823 VOID						
8.23	27.0	29.0884 as 21.0 - 24.564-7.47 but stronger brown lenses and bands. c.a.60° 1/2" (1.27cm) q veinlet at 28'9" q. 8/ 10° c.a.						
9.84	29.0	30.0914 VOID						
9.14	30.0	32.0915 Possibly ALTERED TUFF: sheared, banded, silicified, less rusty alteration material than above; q stringers.						
9.75	32.0	35.21073 As 30 - 32 9.14 - 9.75 with well-cryst. py 33' - 34' 10.05 - 10.36						
10.73	35.2	49.51509 ARGILLITE: silicified, brecciated. 5% py with well-dev. pyritohedrons & some cubes. graphitic, c.a. 45° - 50° q. v. at 42'3/4" 12.87 c.a. 20°. 44' - 44'10" 12.41 - 13.68 along core 45 - 49.5 py about 2%, fractured. q stringers freq. at all angles. Quartzite band at 47'3" 14.42						
15.09	49.5	54.2 ARGILLACEOUS TUFF: hard, massive m.g. cryst. rock with quartz and probably dark mica. Included irregular shaped fragments. Some q stringers at 45° to core.						
16.52	54.2	65.6 ARGILLITE: silicified, fractured and sheared; brecciated appearance; staining through the rock from probably chalcopyrite						
	16.52	19.99 (fine dissemin. small patches sometimes iridescent with brown						

Footage/Metres		Description	Sample No.	Footage/Metres		Length		
From	To			from	to			
		outer coating surr. by rings of malachite) often along cracks						
		61.0 - 61'6" ^{18.59-18.74} white quartz 61'6" - 61'9" ^{18.74-18.84}						
65.6	67.6	q veinlet at 50° to core with wall rock within.						
19.99	10.60	QUARTZ: tetrahedrite in cavities within the q mass; one fleck of GOLD seen at 65'8". Limonite-stained fractures. Occas. py minute crystals ^{20.0*}						
67.6	68.5	ARGILLITE: siliceous with fractures and shears, q - veinlets - pyritic						
20.60	20.88							
68.5	69.5	Broken core to 69.0 ^{21.03} ; fragments of quartz, white quartz						
20.98	21.18	69.0 - 69'2" ^{21.03-21.09} no obvious mineralization; limonite-stained fractures.						
69.5	73.2	ARGILLITE: siliceous, brecciated, many stringers of quartz (stockwork); fractured and sheared, pyrite clots scattered through the rock. 1/2" q veinlet at 71'6" ^{21.82}						
21.18	21.31							
73.2	83.0	ARGILLITE: siliceous, fractured and sheared c.a. 40°. Malachite staining to 79.0' at intervals (decreases down hole). Stockwork of q - stringers. 1" ^{21.97} veinlets at 80.0' ^{24.38} Py scattered throughout as blebs 1%. Veining at about 30° to core where stronger.						
22.31	25.39							
83.0		END OF HOLE						
25.39								

The Agnes & Jennie Mining Co. Ltd.

Diamond Drill Record

Hole No. DD-76-4

Co-Ords:
 Azimuth: S 50° W
 Dip: - 45° S
 Elevation: 4,470 ft. 1362.45
 Length: 58.5 ft. 17.83
 Section:
 Purpose:

Property: Agnes & Jennie Mining Co. Ltd.
 Location: Erickson Ck., Cassiar
 Date Started: 15th July '76
 Date Completed: 15th July '76
 Logged By: TBS
 Date Logged: 15th July '76

Drill Type & Size:

Footage/Metres		Description	Sample No.	Footage/Metres		Length		
From	To			from	to			
	0	18.05.47						
	0	18.05.47						
5.48	18.0	19.05.79						
5.99	19.0	20.06.09						
6.09	20.0	23.47.13						
7.13	23.4	26.58.08						
8.08	26.5	31.59.60						
9.60	31.5	36.01.09						
10.99	36.0	37.61.43						
11.43	37.6	43.31.72						

Footage/Metres		Description	Sample No.	Footage/Metres		Length
From	To			from	to	
		grey-green quartz cleavage or fractures. py. will dev.				
		pyritohedron & cubes, occas. as bands cleavage.				
45.0	50.5	WHITE QUARTZ: 48'3" - 48'10" ^{14.72 - 14.88} tetrahedrite in cracks and				
<i>13.72</i>	<i>15.39</i>	cavities of the quartz 48'9" - 48'11" ^{14.76 - 14.92} some cavities				
		with tetrahedrite. 49'2" - 49'6" ^{14.98 - 15.12} larger cavities with				
		tetrahedrite - minor py specks. Some tetrahedrite along cracks				
		(tetra. possible washed out during drilling at other intervals				
		in vein.				
50.5	58.5	ARGILLITE: Black, hard, irreg. banded, with quartz bands. 52' ^{15.84}				
<i>15.39</i>	<i>17.83</i>	- 52'10" ^{16.11} white quartz with calcite patches, small				
		pyrite crystals, and very small crystal clusters of prob. tetra-				
		hedrite: 52'10" - 48'6" ^{14.78} mod. amount of pyrite crystals				
		and flecks of occas. malachite (on fr. planes with pyrite at				
		57'6" ^{17.83} pyrite also in ankerite veinlets along core, as elong.				
		dissem.				
58.5		END OF HOLE				
<i>17.83</i>						

Co-Ords:
 Azimuth: S 50° W
 Dip: - 65° S
 Elevation: 4,470 ft. 1362.45
 Length: 71.5 ft. 21.79
 Section:
 Purpose:

The Agnes & Jennie Mining Co. Ltd.

Diamond Drill Record

Hole No. DD-76-5
 Property: Agnes & Jennie Mining Co. Ltd.
 Location: Erickson Ck., Cassiar
 Date Started: 16th July '76
 Date Completed: 17th July '76
 Logged By: TBS
 Date Logged: 16th & 17th July '76

Footage/Metres		Description	Sample No.	Footage/Metres		Length		
From	To			from	to			
0	11.0335	OVERBURDEN - (Casing to 18 ft.) S 48 3.61 3.75						
3.35	11.0	12.75389 WHITE QUARTZ: limonite st. fractures 11'10" - 12'3", tetrahedrite to 3% in cavities and fractures; assoc. with py in v, small amount, as dissem. and crystals. Malachite st. on fracture at 12' 3.66.						
3.89	12.75	16.5503 VOID						
5.03	16.5	18.5564 Fragmented rock: sil. argillite, brownish & black in colour.						
5.64	18.5	18.9576 Broken core: quartz w. lim. st.						
5.76	18.9	23.5716 ARGILLITIC (INC. TUFF?) Siliceous; fractured & sheared, c.a. 50° py. dissem. occas. malachite staining from altered sulphide specks espec. on fr. planes (22'10") 6.96 Grey banding (3/4") 1.90 cm. at 23'1" - 23'4" 7.04 - 7.13						
7.16	23.5	24.3741 Broken core; white banded argillite w. lim. st. patches. Fe-carbonate & quartz at 24' - 24'3" 7.31 - 7.41						
7.41	24.3	25.2768 Broken core: white quartz and lin. st. w. sil. argillite fr. and sh.						
7.68	25.2	28.0853 VOID						
8.53	28.0	32.3984 ARGILLITE (INC. TUFF?): siliceous, fr. & sh.; network of quartz stringers 1/2" 1.27cm veinlet at 31'3" 9.57 rock banded; c.a. 25° Malachite stains at 31' espec. and stained at intervals as small specks. 32.0' - 32'3" 9.75-9.84 core broken, white quartz.						
32.3	40.7	ARGILLITIC (INC. TUFF?); siliceous, fractured & sheared 5% occas. py. and small malachite flecks: 1/2" 1.27cm. q veinlet at 40', 15° c.a.						

12.19

Footage/Metres		Description	Sample No.	Footage/Metres		Length		
From	To			from	to			
40.7	41.7	WHITE QUARTZ: w. small frags. c. rk. at 40'8"-40'11"						
<i>12.41</i>	<i>12.91</i>	? fault malachite specks.						
41.7	56.5	ARGILLITIC (INC. TUFF?) Siliceous, fr. and sh. sporadic py to						
<i>12.91</i>	<i>17.12</i>	43'10" <i>13.26</i> core broken at 43' - 43'2" <i>13.10-13.16</i> and 42' - 43' <i>13.10</i>						
		Quartz stringers. 43'9" - 46'11" <i>13.38-14.31</i> v. minor py: <i>14.21</i> 46'11" - <i>14.21</i>						
		52'4" <i>15.97</i> pronounced malachite st. around altered sulphide						
		specks; py 1%; small inclusions of c. rk. in quartz-carb.						
		51'4" - 46'6". <i>15.97-14.17</i>						
56.5	60.5	WHITISH QUARTZ: white quartz with brown staining w. inc. of						
<i>17.12</i>	<i>18.44</i>	c. rk. Tetrahedrite at 54'3" - 56'8" <i>16.55-17.36</i> Falke of						
		GOLD at 59' <i>17.36</i> py sporadic as small drystals & dissem.						
60.5	71.5	ARGILLITE: siliceous, black banded; network of q-veinlets with						
<i>18.44</i>	<i>21.79</i>	py dissem. and crystals; small quantities of calcite assoc.						
		with quartz veinlets; c.a. var. 45° - 60°.						
71.5		END OF HOLE						
<i>21.79</i>								

The Agnes & Jennie Mining Co. Ltd.

Diamond Drill Record

Hole No. DDH-76-6

Co-Ords:

Azimuth: S 15° W

Property: Agnes & Jennie Mining Co. Ltd.

Dip: - 50°

Drill Type & Size:

Location: Erickson Ck., Cassiar

Elevation: 4,470 ft. *1362.45*

Date Started: 26th July '76

Date Completed: 27th July '76

Length: 73.5 ft. *22.40*

Logged By: TBS

Section:

Date Logged: 27th July '76

Purpose:

Footage/Metres		Description	Sample No.	Footage/Metres		Length		
From	To			from	to			
0	26.07.92	OVERBURDEN						
7.92	26.0	26.58.08 Mixed fragmented rock						
8.08	26.5	30.09.14 BRECCIATED ASH: hard, greenish-grey in colour with dark interstitial material.						
9.14	30.0	37.011.28 ARGILLITE: Irregularly banded; siliceous; brown carbonate and white quartz veinlets, c.a. 20°, malachite parallel bands and irregular patches.						
11.28	37.0	41.012.49 SHALE: med. hard, black, malachite along cleavage planes; thin quartz bands parallel to cleavage at intervals; 2" <i>50 CM</i> bands						
12.49	41.0	66.020.12 WHITE QUARTZ: 41 - 42.5 <i>12.49-12.95</i> prominent cavities to 1/8" with tetrahedrite 1%; pale limonite staining; py crystals at intervals, GOLD fleck at 42' <i>12.8</i> with tetra. 42'3" - 12.89 - 13.12						
44'10"		43'4" tetrahedrite in cavities & assoc. malachite. GOLD at with tetrahedrite, several flecks visible. 45'8" - 46'6" <i>13.85-14.17</i>						
20.12		tetrahedrite 1%; core rather broken between 47' <i>14.0</i> and 47' <i>14.32</i>						
		Above 47'2" <i>14.38</i> sandy material. 51'6" <i>15.69</i>						
		52'6" <i>16.0</i> GOLD flecks with tetrahedrite & pyrite at 51'9" <i>15.82</i>						
		52'6" - 53' tetrahedrite in small cavities with minute GOLD specks. 53' - 53'6" <i>16.15-16.3</i> very minor amounts of tetra-						
		1%; 53'6" - 55'6" <i>16.3-16.9</i> sporadic tetrahedrite in small cavity. 56.0' - 59.0' much graphite in fractures, within white quartz + minor py. & limonite stained fractures; py. as dissem.						
		patches with graphite. 59.0 - 61.0 broken core with						

17.88 - 18.59

Footage/Metres		Description	Sample No.	Footage/Metres		Length		
From	To			from	to			
		(1%) chalcopyrite dissem. within graphitic fracture fillings and within fractures in white quartz assoc. with pyrite disseminations. Alternating with siliceous argillite, 61.0 - 65.0 white quartz with graphite filled fractures along with pyrite and some chalcopyrite + brown carbonate at intervals py 3% chalcopy 1%.						
66.0	73.5	ARGILLITE: sil. cark; loose dark sand at 73 - 73'5". (Fault?)						
66.0 73.5	73.5 22.40	core broken 71.0 - 73.5. 22.25 - 22.4						
22.40		END OF HOLE 21.64 - 22.40						

Co-Ords:
 Azimuth: S 15° W
 Dip: - 65° S
 Elevation: 4470 ft. 1362.45
 Length: 97 ft. 29.67
 Section:
 Purpose:

The Agnes & Jennie Mining Co. Ltd.

Diamond Drill Record

Hole No. DDH-76-7
 Property: Agnes & Jennie Mining Co. Ltd.
 Location: Erickson Ck., Cassiar
 Date Started: 23rd July '76
 Date Completed: 24th July '76
 Logged By: TBS
 Date Logged: 24th July '76

Footage/Metres		Description	Sample No.	Footage/Metres		Length
From	To			from	to	
	0	27.0 27.23 OVERBURDEN				
8.23	27.0	29.5 28.79 ASH: hard, grey-green in colour with dark q - veinlets, patches of lighter green material.				
8.99	29.5	29.6 29.0 Mixed fragments of rock				
9.0	29.6	58.5 17.83 ARGILLITE: banded light and darker bands; malachite staining of q veinlets and bands near 32'2" 9.8/ . C.A. 45° 32.0 - 34.2 occas. pyrite as thin lenses; malachite stained quartz. 32'2" - 37'8" with fine white quartz bands and sporadic pyrite dissem: 37'7" - 52'0" 11.49 - 15.84 dark argillite with quartz frags. c.a. 80°. q - veinlets at 20° at 20° to core, sporadic pyrite and malachite flecks, buff veining and bands of ankerite. Malachite increasing down hole. q - veinlets, 6" 15.24 band of quartz at 53' 16.15 , less malachite than above; cavities of calcite crystals occasionally.				
17.83	58.5	69.0 21.03 QUARTZ ALT. WITH ARGILLITE: 58'6" - 59'6" 11.14 1' 1.30 of white quartz tetrahedrite in veinlets. Argillite from 59'6" - 62'0" 11.89 , sil. fr. 62.0 - 62'4" 19.02 white quartz; 62'4" - 63' 19.02 - 19.20 sil. argillite with q-veinlets 63' - 64' 19.20 - 19.51 white quartz, with ankerite veinlets 64' - 68' 19.51 - 20.12 65' - 67' 20.44 void. 4" 10.16 white quartz 67'4" - 67'8" 20.62 - 20.89 argillite, dark, fractured.				
21.03	69.0	79.5 24.73 BRECCIATED VOLC. ASH: hard, buff and green with networks of dark fine veinlets c.a. variable 45° - 70°				
24.23	79.5	84.5 25.79 BRECCIATED VOLC. ASH: Green fragments with darker more prominent				

Footage/Metres		Description	Sample No.	Footage/Metres		Length		
From	To			from	to			
		interstitial material; quartz veinlets more prominent.						
29 84.5	28.5 93.0	BRECCIATED VOLC. ASH: lighter colour than above; pale-green						
		finer material, more predominant than above. 1" ^{K 54} quartz band at 45° at 85'						
28 93.0	97.0	As 84.5 - 93.0 25.75 - 28.34 fine material of a buff colour						
	29.67	END OF HOLE						

Co-Ords:
 Azimuth: S 10° E
 Dip: - 45° S
 Elevation: 4,470 ft. 1362.45
 Length: 56. ft. 17.07
 Section:
 Purpose:

The Agnes & Jennie Mining Co. Ltd.

Diamond Drill Record

Drill Type & Size:

Recovery: 95.85

Hole No. DDH-76-8
 Property: Agnes & Jennie Mining Co. Ltd.
 Location: Erickson Ck., Cassiar
 Date Started 25th July '76
 Date Completed:
 Logged By: TBS
 Date Logged: Aug. '76

Footage/Metres From	To	Description	Sample No.	Footage/Metres		Length
				from	to	
0	24.0	UNRECORDED				
7.31	24.0	22 ARGILLITE AND TUFF: silicified, pale greenish grey in colour with interstitial bands of argillite with contorted banding; sporadic py; a pale green mineral occas. bands to cleavage or shearing. c.a. 50°				
7.42	26.0	25 ARGILLITE: grey-black, siliceous, brecciated with fractured quartz-veinlets c.a. 45°. py cryst. and dissem 1%. limonite staining.				
9.75	32.0	36 ARGILLITE: buff, white and black banded; network of quartz-veinlets and quartzose patches; intermittent malachite films and staining along cleavages.				
10.36	34.0	38 ARGILLITE with heavy rep. by quartz; quartz veinlets; limonitized patches and along fractures.				
11.58	38.0	39 VOID				
12.89	40.0	40 BROKEN CORE. Argillite.				
12.84	41.5	41 ARGILLITE: grey-black, q - veinlets; flakes of malachite and py dissem. patches (1%) in quartz and rock. Limonitic patches. 13.41 - 14.23				
13.41	44.0	42 WHITE QUARTZ: 44.0 - 46.7 with cavities of tetrahedrite. v. minor chalcopy. 46.6 - 49.6 sporadic py. crystals; limonite st. fractures. 49.6 - 51.6 py with v. minor chalcopy. c.a. 30°				
15.70	51.6	43 ARGILLITE: grey-black, siliceous, q - veinlet network, shearing and fracturing; occas. moderate py. and very occas. malachite				

Footage/Metres		Description	Sample No.	Footage/Metres		Length		
From	To			from	to			
56.0	17.07	flakes and coating fr. plane at 53.0 <i>16.15</i> END OF HOLE						

The Agnes & Jennie Mining Co. Ltd.

Hole No.
DDH-76-9

Diamond Drill Record

Property: Agnes & Jennie Mining
Co. Ltd.

Location: Erickson Ck., Cassiar

Co-Ords:

Azimuth: S 10° E

Dip: - 65°

Drill Type & Size:

Elevation: 4,470 ft. 1362.45

Date Started: July '76

Date Completed:

Length: 78 ft. 23.77

Logged By: TBS

Section:

Date Logged: Aug. '76

Purpose:

Recovery: 99%

Footage/Metres		Description	Sample No.	Footage/Metres		Length
From	To			from	to	
	0	24.07.32 OVERBURDEN				
7.32	24.0	61.0/18.59 ARGILLITE: dark, grey-black, quartz bands and irregular quartz patches. Quartz-carbonate veinlets along core; py. at intervals. c.a. 45° 27.5 - 29.5 8.38 - 8.99 void, 30.5 - 32.5 9.29 - 9.91 void; core broken 27.0 - 27.5 8.23 - 8.38 Black & white banded between 35.0 and 36.0; quartz veinlets between 37.0 - 38.0 11.24 - 11.58 contorted at intervals; 42.0 - 43.0 12.8 - 13.1 rock fragmented; broken core between 43.0 - 45.0; 13.1 - 13.71 quartz bands and malachite between 45.0 - 45.8 9.71 - 13.96				
18.59	61.0	65.0/19.81 WHITE QUARTZ: tetrahedrite at intervals in cavities; tiny flakes of gold at 63' 19.2; core broken 63.0 - 64.0 19.2 - 19.5 Argillite material mixed with end of vein at 65' 19.8				
19.81	65.0	71.0/21.64 ARGILLITE: siliceous, irreg. banded with quartz; grey-black in colour, very sporadic ankerite and malachite.				
21.64	71.0	78.0/23.11 ARGILLITE: as above but with increasing amounts of brecciated fine volcanic ash material down the hole with interstitial argillite				
23.11	78.0	END OF HOLE				

The Agnes & Jennie Mining Co. Ltd.

Diamond Drill Record

Hole No. DDH-76-10

Property: Agnes & Jennie Mining Co. Ltd.

Co-Ords:

Azimuth: S 10° E

Dip: - 45° S

Drill Type & Size:

Location: Erickson Ck., Cassiar

Elevation: 4,470 ft. 1362.45

Date Started: 2nd Aug. '76

Date Completed: 3rd Aug. '76

Length: 71.5 ft. 21.79

Logged By: TBS

Section:

Date Logged: Aug. '76

Purpose: Recovery: 88%

Footage/Metres		Description	Sample No.	Footage/Metres		Length		
From	To			from	to			
0	24.0	OVERBURDEN .32 cm.						
7.32	24.0	25.2 QUATZ: white with 1/8" tetrahedrite filled cavities, showing malachite and azurite staining. Gold flake within quartz - argillite border with tetrahedrite filled cavities. Limonite staining.						
7.68	25.2	26.0 ARGILLITE: dark, siliceous, contorted.						
7.93	26.0	31.0 VOID 9.45 - 10.12						
9.45	31.0	42.5 ARGILLITE: 31.0 - 33.2 quartzose patches with occas. py; ankerite veining; malachite flecks occas.; considerable alteration and replacement of arg. material. 3.2 - 38.7 .97 - 11.79 siliceous; q - veinlets; fractured occas. malachite c.a. 70° - 50°; contorted. pyrite in q - veinlets at 42.5 12.95						
12.95	42.5	43.5 QUATZ: white; spor. malachite in inclusions of argillite within quartz.						
15.26	43.5	50.0 ARGILLITE: much siliceous alteration and q-veining 5% py and malachite along sh. and fr. 3" 7.61 cm q - vein at 45° py 2% 45.2 - 47.8 13.77 - 14.59 considerable malachite staining and along fractures; considerably silicified and fractured; contorted at 47.0'; 14.33 47.8 - 48.6 14.57 - 14.81 bands of argillite 1/8" to 1/4" with malachite and py within white quartz contorted; fractured. 49.0 - 50.0 quartz-veinlets, malachite, py 2% c.a. 55° 14.94 - 15.24						
15.24	50.0	16.6 WHITE QUATZ: 50.0 - 52.5 15.24 - 16.0 (rcc 18") white q. with occas. py. crystals and v. occas. tetrahedrite; core						

Footage/Metres		Description	Sample No.	Footage/Metres		Length		
From	To			from	to			
		broken; rusty fractures. Flecks of gold assoc. with tetrahedrite filled cavities at 53' 4.15 ; azurite and malachite staining.						
16.41	54.5	57.2 17.37 ARGILLITE: sil. contorted, fr. & sh. q - veinlets; core rather broken						
17.37	57.2	58.2 17.74 WHITE QUARTZ: inclusions of argillaceous material; chalcopyrite along fractures and disseminations, 1%; iron carbonate patches.						
17.74	58.2	71.5 17.79 ARGILLITE with greater % of pale greenish-grey f. g material, presum. volc. ash material; q - veinlets and considerable py at intervals along fractures and as large crystals.						
21.79	71.5	END OF HOLE						

The Agnes & Jennie Mining Co. Ltd.

Hole No. DDH-76-11

Co-Ords:	Diamond Drill Record		Property: Agnes & Jennie Mining Co. Ltd.
Azimuth: S 10° E	Drill Type & Size:	Location: Erickson Ck., Cassiar	
Dip: - 65° S	Elevation: 4,470 ft. 1362.45	Date Started: 4th Aug. '76	Date Completed: 6th Aug. '76
Length: 82 ft. 24.99	Section:	Logged By: TBS	Date Logged: 12th Aug. '76
Purpose:	Recovery: 60 - 70% 80% in vein		

Footage/Metres	Description	Sample No.	Footage/Metres		Length
			From	To	
0	24.0 7.31 OVERBURDEN				
7.31 24.0	27.0 8.23 ARGILLITE: 24 - 27 7.31 - 8.23 dark, siliceous, q - veinlets, ankerite patches 1" 2.54 cm q band at 26.0 7.92				
8.23 27.0	28.0 8.53 VOID				
8.53 28.0	30.0 9.17 ARGILLITE: banded, buff and grey-black in colour; malachite at freq. intervals ca. 65°				
9.14 30.0	31.5 9.60 VOID				
9.60 31.5	38.8 11.82 ARGILLITE: grey and black in colour, finely banded				
11.82 38.8	58.0 17.68 ARGILLITE: silicified in patches; banding vague; q - veinlets along core and branching cleavage; malachite from 38.8 - 11.83 40.8 12.44 as patches and bands. Py 1%; 42.5 - 48.8 12.95 - 14.87 core broken sil. py. c.a. 65°. large pyrite crystals at intervals (1/4") .63 cm white quartz lenses cleavage. 1/8 - 1/4" .32 cm .13 cm Occas. veinlets at c.a. 20° at intervals. Malachite from 47'10" - 48'6" 14.59 - 14.81 . 1" 2.54 cm of white quartz at 48.5' 14.78 . 48.6 - 58.0 14.81 - 17.68 sporadic malachite; q - veinlets network; brecciated f.g. included material. (53.5 - 54.0) (16.31 - 16.46)				
17.68 58.0	67.0 20.42 QUARTZ: white, c.a. f. black bands, 30°, minor py at 62 - 63 19.89 - 19.20 Irreg. gold flake at 63' with a small number of tetrahedrite clusters and small pyrite crystals 65.5 - 66.5 19.96 - 20.27 At 64.5 19.66 frags. of argillite with py and malachite. At 67.0 20.42 argillite mixed with quartz as bands and patches, and containing chalcopyrite, pyrite and ? GOLD fleck.				

Footage/Metres		Description	Sample No.	Footage/Metres		Length			
From	To			from	to				
20.42	67.0	82.0	2499	ARGILLITE: with included pale greenish-grey brecciated f.g. volc. material which increases down the hole. Quartz-ankerite fracture fillings. Quartz veinlets c.a. 60°; q - bands at 20° pyrite to 1% at intervals					
24.99	82.0			END OF HOLE					

Co-Ords:

The Agnes & Jennie Mining Co. Ltd.

Hole No EE-76-12

Azimuth: S 5° E

Diamond Drill Record

Property: Agnes & Jennie Mining
Co. Ltd.

Dip: - 45° S

Drill Type & Size:

Location: Erickson Ck., Cassiar

Elevation: 4,470 ft. 1362.45

Date Started: 6th Aug. '76

Date Completed: 8th Aug. '76

Length: 71.0 ft. 21.64

Logged By: TBS

Section:

Date Logged: 16th Aug. '76

Purpose:

	Footage/Metres		Description	Sample No.	Footage/Metres		Length		
	From	To			from	to			
	0	23.0	OVERBURDEN						
7	10	23.0	33.5	10	21	ARGILLITE: grey-black, siliceous, quartz bands cleavage; banding faint, inc. f.g. volcanic material, grey in colour. Rusty cl. and fr. planes; occas. quartzose replacement patches. Ca 60° 32.5 - 33.5 7.9/ - 0.2/ considerable malachite along cl. planes; py as small dissem. aggs. and along quartz veinlets along fr. planes; later generation of quartz-veinlets cutting those with pyrite. Rock has brecciated appearance due to fr. Quartz replacement areas at intervals.			
10	21	33.5	39.4	12	01				
12	01	39.4	45.3	13	11	ARGILLITE: white, black and green banded. Malachite along cl. planes; q - carbonate veinlets; contorted at 41.4; shearing; brecciated at intervals with included quartz frags.; quartz replacement areas vuggy between 43' and 44' 13.1/ - 13.4/ with rusty cavities; becoming more siliceous towards quartz vein, and more compact in texture. Ca. 60°			
13	81	45.3	48.0	14	63				
14	63	48.0	51.0	15	54	ARGILLITE: malachite in mod. amount as bands cl.; q - veinlets along the core and cleavage direction.			
15	54	51.0	54.5	16	61	VOID			
16	61	54.5	56.0	17	09	VOID			
17	09	56.0	58.0	17	68	VOID			
17	68	58.0	61.8	18	34	ARGILLITE: fragmented core; blue-black in colour			
18	34	61.8	72.0	18	94	VOLCANIC BRECCIA with argillite matrix. q - veinlets (1/4") (.63 cm.)			

The Agnes & Jennie Mining Co. Ltd.

Diamond Drill Record

Hole No. DD-76-13

Co-Ords:
 Azimuth: S 5° E
 Dip: - 65° S
 Elevation: 4,470 ft. 1362.45
 Length: 53.5 ft. 16.31
 Section:
 Purpose:

Property: Agnes & Jennie Mining Co. Ltd.
 Location: Erickson Ck., Cassiar
 Date Started: 8th Aug. '76
 Date Completed: 10th Aug. '76
 Logged By: TBS
 Date Logged: 12th Aug. '76

Drill Type & Size:

Footage/Metres		Description	Sample No.	Footage/Metres		Length		
From	To			from	to			
	0	24.0 7.3 / OVERBURDEN						
7.0 /	24.0	24.5 7.47 Mixed gravelly rock.						
7.41	24.5	41.0 12.4 / ARGILLITE: sil.; dark; included greenish-greyy prob. volc. frags; q - veinlets. Ca 45°, - 24.5 - 28.0 7.47 - 8.53. 28.0 - 31.0 8.53 - 9.45 : about 2" core with q - feldspar: 31.0 - 32.0 much q - feldspar replacing argillite. 32 - 33 9.75 - 10.06 9.45 - 9.75 with minor amount of malachite with q - v.: 33.0 - 34.0 10.06 - 10.36 6" 15.24 of core, black, calcareous, q - Fe. carb. veinlets: 34.0 - 35.0 10.06 - 10.67 py along fractures: 35.0 - 36.3 10.67 - 11.06 py + contorted malachite 36.3 - 36.5 11.06 - 11.43 fragmented. 36.5 - 37.5 11.43 - 11.79 broken core; pyritic 37.5 - 38.7 11.79 - 12.16 q - feldspar rep. and bands (1/4") (63 cm) + malachite flecks ca 45° 38.7 - 39.9 11.79 - 12.16 malachite throughout rock. 39.9 - 40.8 v. minor malachite + py 40.1 - 40.8 12.22 - 12.44 fragmented.						
12.41	41.0	43.0 13.1 / VOID						
13.11	43.0	53.5 16.3 / ARGILLITE: dark, q - veinlets c.a. 60°, quartzose reps. areas, (void 50 - 51) (15.24 - 15.54)						
16.31	53.5	END OF HOLE (abandoned)						

The Agnes & Jennie Mining Co. Ltd.

Diamond Drill Record

Co-Ords:
 Azimuth: S 10° E
 Dip: 65° S
 Elevation: 4,430 ft. ~~1350.26~~
 Length: 32 ft. 9.75
 Section:
 Purpose:

Hole No. DD-76-14
 Property: Agnes & Jennie Mining Co. Ltd.
 Location: Erickson Ck., Cassiar
 Date Started: 11th Aug. '76
 Date Completed: 12th Aug. '76
 Logged By: TBS
 Date Logged: 18th Aug. '76

Drill Type & Size:

Location: Erickson Ck., Cassiar

Date Started: 11th Aug. '76

Date Completed: 12th Aug. '76

Logged By: TBS

Date Logged: 18th Aug. '76

Footage/Metres		Description	Sample No.	Footage/Metres		Length		
From	To			from	to			
0	12.9	ARGILLITE: sil. blue-black in colour; malachite and py dissem. and lenses, 0 - 7.5 0 - 2.28 : 7.5 - 11.5 2.28 - 3.51						
	3.93	much alteration and replacement by quartz, fr. and sh., with brecciation. Network of q - carb. veinlets of two periods (cl. cutting cl.) Py throughout rock (2%) as irreg. spots. Vuggy and rusty areas and fr. planes at intervals 11.5 - 12.9						
	3.51 - 3.93	quartzose areas w. mod. tetrahedrite (1" at 11.5' 3.51) minor tetrahedrite with malachite staining in cracks within quartz.						
3.93	12.9	WHITE QUARTZ: minor tetrahedrite 14.2 - 14.3 4.33 - 4.34						
4.36	14.3	ARGILLITE: sil, brecciated app. with pale greenish-grey volcanic frags. and argillite matrix; rusty rock and vuggy						
	4.94 - 4.85	16.2 - 15.9 ca 60°; 17.5 - 19.0 6.7 much rusting of argill. material, vuggy w. ribs of quartz, contorted, occas. malachite (24.0 - 25.0); much less malachite 25.0 - 26.0						
	7.32 - 7.82	with malachite bands and staining; q - veinlet network.						
	8.53 - 8.84	fr. & sh. - brecciated from 28 - 29						
32.0		END OF HOLE						
9.75								

The Agnes & Jennie Mining Co. Ltd.

Diamond Drill Record

Hole No. DD-76-15

Co-Ords:		Property: Agnes & Jennie Mining Co. Ltd.
Azimuth: N		Location: Erickson Ck., Cassiar
Dip: - 45°	Drill Type & Size:	Date Started: 16th Aug. '76
Elevation: 4,430 ft. 1350.26		Date Completed: 17th Aug. '76
Length: 34.5 ft. 10.52		Logged By: TBS
Section:		Date Logged: 19 Aug. '76
Purpose:	Recovery: 50%	

Footage/Metres		Description	Sample No.	Footage/Metres		Length		
From	To			from	to			
0	5.0	1.52 ARGILLITE: quartzose, minor malachite 0 - 1.5 0 - .45 fr. sh. & brecc. with q - ankerite rep., malachite, 1.5 - 3.0 .45 - .91 quartzose with much malachite 3.0 - 5.0 .91 - 1.52						
5.0	10.0	3.05 ARGILLITE AND WHITE QUARTZ: quartz vein with malachite and intercalated dark argillite being rep. by quartz. Argillite material in part rusted. Fragmental 7.5 - 10.0 2.18 - 3.05						
10.0	12.0	3.66 ARGILLITE: hard, contorted, rather rusty and pitted, q - carb. rep. areas. fr., sh., brecciated ca. 50°						
12.0	20.0	6.09 VOID						
20.0	34.5	10.52 ARGILLITE: blue-black in colour with q - veinlet network, sil. fr., & sh.; v. minor malachite. c. rk. included within veinlets which are fr. & displaced. 20.0 - 24.0 6.09 - 7.32 Rusty with core broken 24.0 - 25.5. Blue-black argillite with q. and carbonate rep. areas. q - lenses cl. ca 50° 25.5 - 34.5 7.77 - 10.52						
34.5		END OF HOLE						
10.52								

The Agnes & Jennie Mining Co. Ltd.

Diamond Drill Record

Hole No. DD-76-16

Co-Ords:	
Azimuth: N 40° E	
Dip: - 65 N	Drill Type & Size:
Elevation: 4,430 ft. 1350.26	Date Started: 17 Aug. '76
Length: 45 ft. 13.72	Date Completed: 18 Aug. '76
Section:	Logged By: TBS
Purpose:	Date Logged: 22 Aug. '76

Property: Agnes & Jennie Mining Co. Ltd.

Location: Erickson Ck. Cassiar

Footage/Metres		Description	Sample No.	Footage/Metres		Length		
From	To			from	to			
0	4.5/37	ARGILLITE: with brecciated frags. of q. and pale-brown ? volc. material fr. and sh. Occas. flecks of malachite. med. hard.						
1.37	4.5	VOID						
1.83	6.0	12.03.66 ARGILLITE: grey-black, hard with inc. frags. of q.; fr. and sh. white quartz with inc. of fine argillite filled fractures. Sporadic py as small dissem. and crystals. q - veining core to 1/2" 1.27 ^{cm} wide.						
3.66	12.0	13.03.66 VOID						
3.96	13.0	14.04.77 ARGILLITE: grey-black w. pale brown fragments.						
4.27	14.0	16.04.87 VOID						
4.47	16.0	20.56.25 ARGILLITE: grey-black, finely-banded, hard c.a. 45° fine white bands of quartz-carb. c.a. 70° of veinlets, cl. 45 - 70° (var.) to core (18 - 20 VOID); some rusty lengths of core.						
6.25	20.0	32.09.75 ARGILLITE: hard to med. hard, blue black in colour; contorted fr. and sh; minor areas of quartz and calcite replacement at var. angles to core. c.a. of argillite av. 45°; malachite at 28.0 - 28.5 8.53 - 8.69 w. argillite inclusions.						
9.95	32.0	45.0/3.72 VOLCANIC PRECCIA with argillite as matrix to sh. and fr. frags. of greenish-grey material. 2" 5.08 ^{cm} q band (broken) at 43.5. /3.26						
45.0		END OF HOLE						
13.72								

Co-Ords:
 Azimuth: S 10° E
 Dip: - 50°
 Elevation: 4,400 ft.
 Length: 100 ft.
 Section:
 Purpose:

The Agnes & Jennie Mining Co. Ltd.

Diamond Drill Record

Hole No. DD-76-17
 Property: Agnes & Jennie Mining Co. Ltd.
 Location: Erickson Ck., Cassiar
 Date Started: 18 Aug. '76
 Date Completed: 21 Aug. '76
 Logged By: TBS
 Date Logged: 21 Aug. '76

Footage/Metres		Description	Sample No.	Footage/Metres		Length
From	To			from	to	
0	5.0	OVERBURDEN (Casing 6.0') (1.82)				
1.524	5.0	ARGILLITE: blue black in colour, med. hard, fine q - veinlet net, Ca 70°				
1.53	6.0	Frag of rock 6" core rep. blue-black argillite w. 1/4" q - v				
2.44	8.0	Broken core of blue-black argillite w. q-replacement areas and q - calcite veinlets.				
2.74	9.0	ARGILLITE: as above q - v cl and fr., irreg. contorted, cl. planes fine q - carb bands cl.				
3.05	10.0	WHITE QUARTZ + CALCITE: later than veinlets, calcite cl., included argillite fragments.				
3.5	11.5	ARGILLITE: 11.5 - 17.5' blue-black, med. hard, closely banded and w. white specks (calcite), py crystals at intervals; malachite flecks cl. and staining q., espec. 11.5 - 12.5' ; less malachite to 17.5'				
		17.5 - 22.0' grey-black sil. fr. and sh., less distinct banding than 11.5 - 17.5' Inc. quartose down hole, brecc. app. with rounded and sub-rounded grey and white quartz fragments cut by v. fine dark veinlets, sometimes malachite stained. py crystals & dissem. lenses cl. 1/8" q bands cl. at intervals. 1" white quartz band 15° to core, cutting earlier structures and itself disp. by sh. plane. grey, more quartose than above inc. sil. down hole; fine fr and sh				

Footage/Metres		Description	Sample No.	Footage/Metres		Length		
From	To			from	to			
		much displacement of q - veinlets and irreg. ill-defined q areas; pyrite crystals and dissem. irreg. areas; 1/8" veinlets cutting other structures. 23.9 - 24.0 7.28 - 7.31						
		rep. area of quartz fr. and sh. and further sil across previous structures (core ground at 27.0 - 27.5 8.23 - 8.38)						
		27.5 - 37.5 8.38 - 11.43 argillite very much replaced by quartz, less py than above q - veinlets at low angles to core (20°). 2" 5.31 - 5.38 q - cal. rep. at 37.5 - 38.0 11.43 - 11.58:						
		37.5 - 41.5: 12.65 blue-black, 37.5 - 38.0 brecc. app. with malachite; subrounded quartz fr. and with dark veinlets: 38.0 - 41.5 med. hard, banded with var. core angles larger paler-grey fragments and q - bands cl. between 39.0 - 40.0 11.88 - 12.19 sporadic malachite. 41.5 - 46.0 12.65 - 14.02						
		contorted with fine cl. planes; lenses of q - ankes; some rusty fr. planes, malachite thro' rock as flecks along cleavage planes.						
13.71	46.0	56.5 17.22 ARGILLITE: with presum. grey green volcanic material; brecc. fr. and sh. brown-stained q - veinlets, 46.0 - 47.0 14.02 - 14.32						
		with malachite cl. planes; brown frags. at intervals.						
17.22	56.5	58.2 17.74 VOLCANIC BRECCIA: argillite matrix to fr. & sh. fragments, pale-pinkish grey. (3/4" 9/cm q - v at 30° at 56.5' 17.22)						
17.74	58.2	58.9 17.95 ARGILLITE: black, with rounded and angular fragments of inc. quartz; fr. and sh.						
17.95	58.9	63.0 17.20 VOLCANIC BRECCIA: with intervening argillaceous bands fr. & sh. sl. lim. in places. inc. q fragments. buff, grey and black in colour.						
19.20	63.0	66.0 20.12 as 58.9 - 63.0 17.95 - 17.95 with less alteration; sporadic fine pyrite.						
20.12	66.0	73.0 21.25 ARGILLITE + VOLCANIC ROCK: dark argillite matrix to incr. casing amount of grey-green volc. material down the hole						
21.25	73.0	75.0 21.86 VOLCANIC TUFF & ASH: pale grey-green rock with fine dark veinlets; speckled with pyrite crystals (2%) & Dissem. and V: occas prob. tetrahedrite denoted by surr. fine malachite staining of rock.						
22.86	75.0	80.9 24.66 WHITE QUARTZ: fr. planes with pale orange-brown lim. staining and intervening quartz; pyrite sporadic at intervals. Some argillite (78.9 - 79.9) above cracks and as lenses. Poss. V. minor tetrahedrite at 80.8. 24.63						

Footage/Metres	Footage/Metres		Description	Sample No.	Footage/Metres		Length		
	From	To			from	to			
2466	80.9	82.02499	ARGILLITE: dark grey-black with heavy pyritization as small crystals with WHITE QUARTZ (30%). Argillite inclusions in quartz as lenses and streaks.						
2499	82.0	83.02500	WHITE QUARTZ: with rusty staining and some minor intercalated argillite lenses and grey-green volc. material.						
2530	83.0	85.52606	Broken core, VOLCANIC ROCK + ARGILLITE: pale-greenish grey rock with minor argillite dark rock. white quartz replacement areas; rusty staining; 1/16" - 1/7" .158 cm - .362 cm irreg. q. stringers.						
2606	85.5	100.03048	VOLCANIC-ARGILLITE ROCK: pale-greenish rock with minor dark argillite. Variably irreg. coloured banding. Irreg. networks of quartz beinlets and cl. & fr. Calcite lined fr. planes. Calcite paste-like at 92.0" 28.04 on fr. pl. ; - veinlets broken and displaced.						
	100.03048		END OF HOLE.						

Co-Ords:

The Agnes & Jennie Mining Co. Ltd.

Hole No. DD-76-18

Azimuth: S 35° W

Diamond Drill Record

Property: Agnes & Jennie Mining Co Ltd

Dip: -45°

Drill Type & Size:

Location: Erickson Ck., Cassiar

Elevation: 4,400 ft. 1341.12

Date Started: 21 Aug. '76

Date Completed: 23 Aug. '76

Length: 120 ft. 36.58

Logged By: TBS

Section:

Date Logged: 24th & 25th Aug. '76

Purpose:

Footage/Metres From	To	Description	Sample No.	Footage/Metres		Length
				from	to	
0	6.0	Overburden (casing 6.0')				
1.83 6.0		ARGILLITE: black, hard; q - calcite nep. areas; q - veinlets along core Ca. 60°. 6.0 - 10.0' 1.83 - 3.05 : 10.0 - 21.0'				
		3.05 - 6.4 irreg. banded q-bands cl. or fr.; contorted lengths. q - veinlets along core (1/8" - 1/4") 3/4 cm - .63 cm spor; py along latter and fr. planes; q-replacement areas. malachite very sporadic. 12.0 - 13.0 3.68 - 3.96 much replaced by calcite banding; brecciated, fr. and sh; veinlets along core. and displaced by fr.: 13.0' - 21.0' 3.96 - 6.4 similar to 10.0 - 12.0' 3.05 - 3.66 but w. more malachite cone. in bands and staining quartz fragments. espec. 14.5 - 15.0'				
		4.42 - 4.57 : 14.0 - 14.5' q - v irreg. w. prob. minor tetrahedrite w. surr. haloes of malachite. Malachite decreasing to 21.0'. 6.4 21.0 - 24.7 6.4 - 7.53 pyritic, hard, more quartzose than above; q. frags. fr. & sh. to breccia like; very pale-green staining of quartz at intervals; contorted; irreg. q veinlets, cl. and along core at var. angles. py as dissem. lenses cl: banding of rock less distinct than above.				
7.53 24.7	25.5	QUARTZ: replacement or argillite; pale-green staining of quartz prob. by malachite; 1/2" 1.27 cm irreg. yellow py. crystals; dark argillite included within quartz.				
7.77 25.5	60.0	ARGILLITE: 25.5 - 41.5 7.77 - 12.65 black, with much replacement irreg; areas of quartz and calcite. Banding somewhat obliterated;				

Footage/Metres		Description	Sample No.	Footage/Metres		Length
From	To			from	to	
		malachite staining of quartz at intervals; fr. and sh.; pyritic with 1/4" ^{0.63 cm} py dissem. and crystals; brecc. q - v (2") ^{5.08 cm} at 41.0 ^{12.49} some green volc. frags. and pale brown ankerite. q - veinlets cl. and at var. angles to core. Cq. of rk. 60° : 41.5 - 58.0 ^{12.65 - 17.68} , grey-black, softish, var. cl. & banding var. distinct to obliterated; quartz rep. areas; 1/4" ^{0.63 cm} pyrite crystals at intervals. Quartz bands 45° cq.; 58.0 - 60.0 ^{17.68 - 18.29} much replaced by quartz; speckled white; faint green staining of some quartz areas.				
18.2	960.0	62.5 ¹⁹⁰⁵ VOLCANIC BRECCIA & AGGLOM: banded pale-green, black and white rock banding irregular; green lenses of volc. material, argillite matrix				
19.05	62.5	80.5 ¹⁴⁵⁴ ARGILLITE: blackish-grey in colour. q - veinlets along core and irreg. quartose rep. areas; faint fine q - veinlets network tetrahedrite with surr. malachite staining haloes; vugs bordering vein over 1 1/2" ^{3.81 cm} w. malachite in bordering argillite Ankerite areas within veinlet and bordering argillite; fr. variable malachite throughout length				
24.54	80.0	85.0 ¹⁵⁹⁹ ARGILLITE + VOLC. MATERIAL: brecciated appearance with large fragments of buff material prob. volc.; q - ankerite, and q - replacement areas; rusted between 83'9" ^{25.57} and 84'0" ^{25.6} malachite 82'10" ^{25.27} along fr. planes.				
25.9	85.0	93.5 ¹⁴⁵⁰ VOLCANIC BRECCIA WITH IRREG. BANDS OF BLACK ARGILLITE: Argillite with inclusions of small volcanic fragments; frags. pale brown to pale grey-green; whole length speckled to 91.0 ^{27.73} with 1/8" ^{3.18 cm} py. crystals (1%). 1" ^{2.54 cm} quartz lens w. ankerite veinlets 93.0 - 93.5 (core broken 90.5 ^{28.35 - 28.49} 99.0) ^{30.17} . 93.5 - 97.0 ^{28.49 - 29.56} volcanic breccia in argillite matrix.				
28.50	93.5	97.0 ¹⁴⁵⁰ VOLCANIC BRECCIA + ARGILLITE MATRIX: Banded rock with irreg. bands of pale grey-green, and rusting bands and black argillite banding 3" ^{7.62} quartz at 20° ca. pyritic-argillite bordering quartz which inc. thin pale-brown bands of carbonate vein cq. within it.				
29.57	97.0	98.9 ³⁰¹⁴ WHITE QUARTZ: sporadic py cryst; empty small cavities, minor py as dissim. in q and in fractures; bordering argillite contains about 5% py for 3" ^{7.62} length.				

	Footage/Metres		Description	Sample No.	Footage/Metres		Length		
	From	To			from	to			
30.14	98.9	100.330.54	ARGILLITE: strongly quartzose with black argillite; mottled rock py along fractures as irreg. lenses and as crystals thro' rock. 1/4", 63 cm q v at 60° cq. 100.2' 30.54						
30.57	100.3	101.93/06	ARGILLITE + QUARTZ: 60% quartz with 40% argillite. Intercalated irregular lenses of argillite w. var. limonite staining white quartz rock brecc. fr. sh.; speckled with pyrite dissem. 5% - 10% var; py crystals also along q fractures. ? tetrahedrite with the pyrite in minor amount. py also as fine well-formed cryst. in fractures.						
31.06	101.9	105.532/6	ARGILLITE: grey, very quartose; fr. sh. brecciated, pyrite speckled; irreg. banding at various core angles. Some pyrite along cracks.						
32.16	105.5	108.032/92	QUARTZ + ARGILLITE: intercalated dark-grey quartose pyritic argillite 70% quartz with argillite as irregular areas and bands and along core. 32.92 - 4.14						
32.92	108.0	120.036/54	ARGILLITE: with volcanic fragments (; 108 - 112 broken core) dark grey-black, fr. and sh; 1/16" - 1/8" q - veinlets and along core; rusty fr. planes core; brecciated rock at some intervals. 1.5 cm. 38 cm.						
32.59	120.0		END OF HOLE						

Salisbury & Dietz

4111 Glenrose Spokane, Washington 99203

(509) 535-8874

Geologic Consulting
Exploration Services
Portable Diamond Drilling

March 9, 1976

Kristian Ross
Suite 203
1209 E. 4th St.
N. Vancouver, B.C. Z7J1G8

Dear Mr. Ross;

Pursuant to a telephone request from Jim Dawson we are pleased to submit the following proposal pertaining to work on your property near Watson Lake, Southern Yukon. In preparing this proposal we have made the following assumptions:

- (1.) Work is to begin on or about July 1, 1976 and consists of five or six holes, ^{set with 2 1/2" hole bit} aggregating 1300 linear feet. Hole inclinations will range from -30 degrees to -70 degrees and no holes are anticipated to exceed 200 feet in depth.
- (2.) Sufficient water will be available within 200 feet of each drill site.
- (3.) Overburden will not exceed 40 feet in depth.
- (4.) You will provide camp facilities and subsistence for our crew (two men) as well as 220 gallons (U.S.) of regular gasoline.
- (5.) You will provide transportation for our crew and equipment from Watson Lake to the job site and return as well as whatever on-site transportation may be required.
- (6.) We further understand that you will obtain all necessary permits and make all other arrangements with Immigration, Customs and similar agencies to guarantee rapid and legal entrance from the United

States of all equipment and Salisbury & Dietz personnel as well as re-entry to the United States of the same. Any direct costs, fees, penalties or loss of revenue due to impounding of equipment or personnel in connection with the above will be for your account.

Salisbury & Dietz agrees to provide one Winkie GW 15 drill along with all associated equipment, diamonds and personnel necessary to drill the footage requested.

In consideration of the above, we suggest the following schedule of charges. (All funds quoted in U.S. currency.)

- (1) Lump sum fee for mobilization to the job site & return. (See attached breakdown.) \$ 3213.92
- (2) Drilling charged at an all-inclusive rate of \$15.75 per foot except all footage over the 1300 foot minimum will be charged at \$15.25. An additional charge of \$1.00 per foot will be made for footage drilled below 200 feet in depth.
- (3) An additional \$2.50 per foot will be charged for penetration of overburden greater than 15 feet in depth.
- (4) Drill mud and drill hole additives, if required will be charged at cost F.O.B. job site.
- (5) Casing and casing shoe bits lost or left in the hole at clients request will be charged at cost F.O.B. Spokane.
- (6) Salisbury & Dietz plastic core boxes will be supplied if requested at the rate of \$2.75 per box F.O.B. Seattle, Wash.
- (7) All duty, brokerage fees, bond premiums or other costs associated with transporting Salisbury & Dietz equipment to and from Canada will be born by you or charged at actual cost.
- (8) In compliance with our verbal agreement we will expect a \$ 5000.00 advance payment prior to mobilization. Billing for work completed will be made weekly on the job site with payment to our Spokane office within 7 days of billing date. All billing figures will be stated in U.S. currency, with payments in the same or equivalent funds.

We look forward to working with you on this project.

Signed J.C. Salisbury
Salisbury & Dietz

Accepted Kristian Ross
Dave & Kristian Ross