

JAMES P. ELWELL, P.ENG.  
CONSULTING MINING ENGINEER

PHONE: 682-2120  
RES: 922-2551

1029 - 510 W. HASTINGS ST.  
VANCOUVER 2, B.C.

6134

December 21st., 1976

GOLD VALLEY RESOURCES LTD.

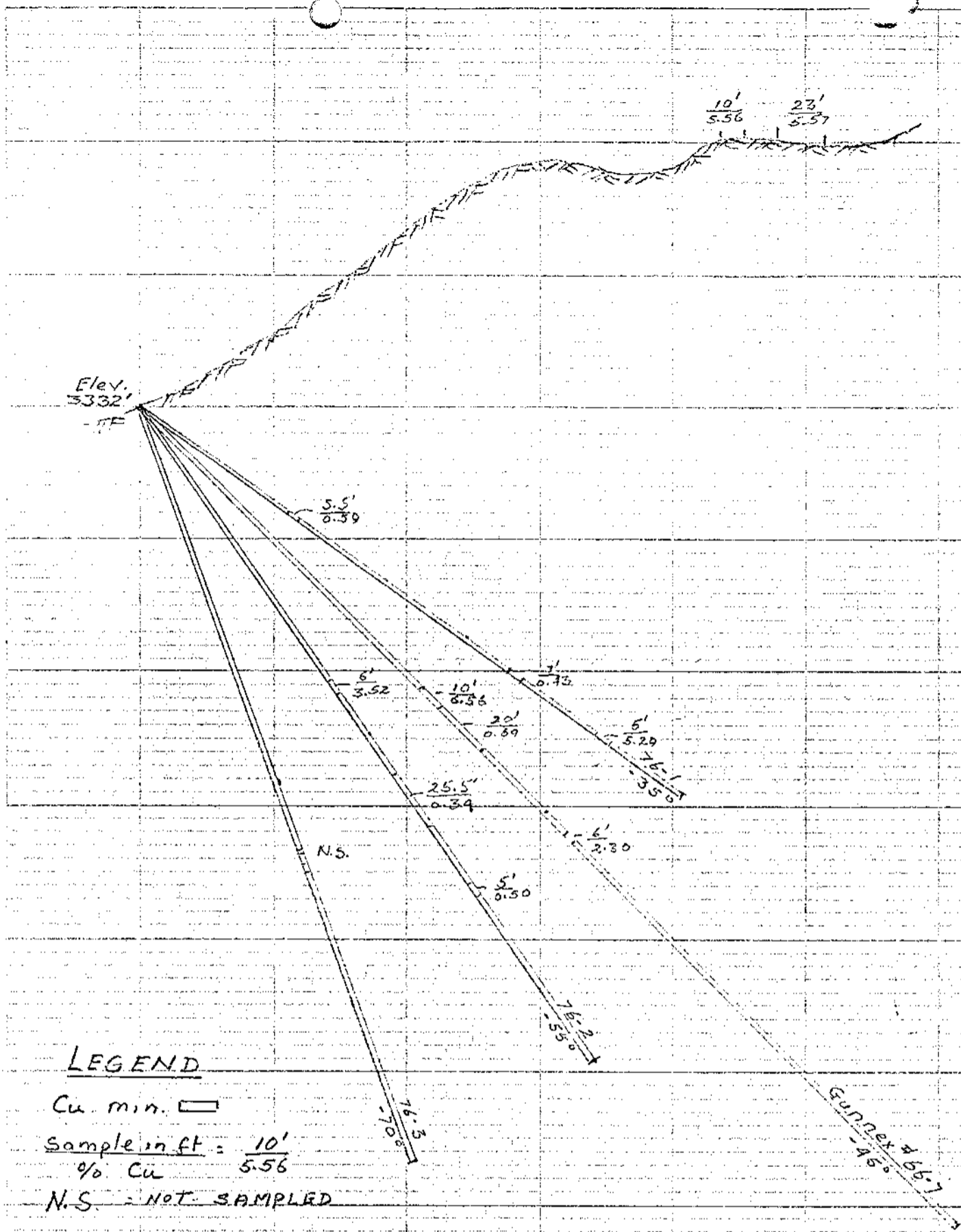
Statement of Costs - Diamond Drilling, Wine Claim,  
Victoria Mining Division, B.C.

McGillvray Helicopters Ltd., - June 12th.-Sept. 15th., ..	.\$3059.06
Herb Allan Drilling, Contract, .....	<u>17927.45</u>
Total, ....	\$20986.51

92F/2E

*James P. Elwell*  
P. Eng.

MINERAL RESOURCES BRANCH  
ASSESSMENT REPORT  
NO. 6134



**LEGEND**

Cu. min.

Sample in ft. = 10'  
% Cu 5.56

N.S. - NOT SAMPLED

**GOLD VALLEY RESOURCES LTD.**

MT. SPENCER PROPERTY.  
ALBERNI MIN. DIV., B.C.

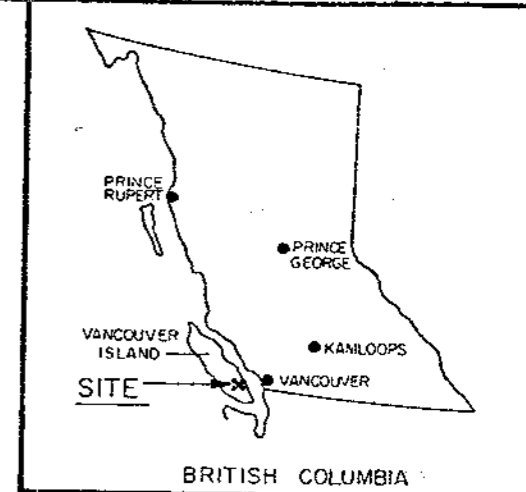
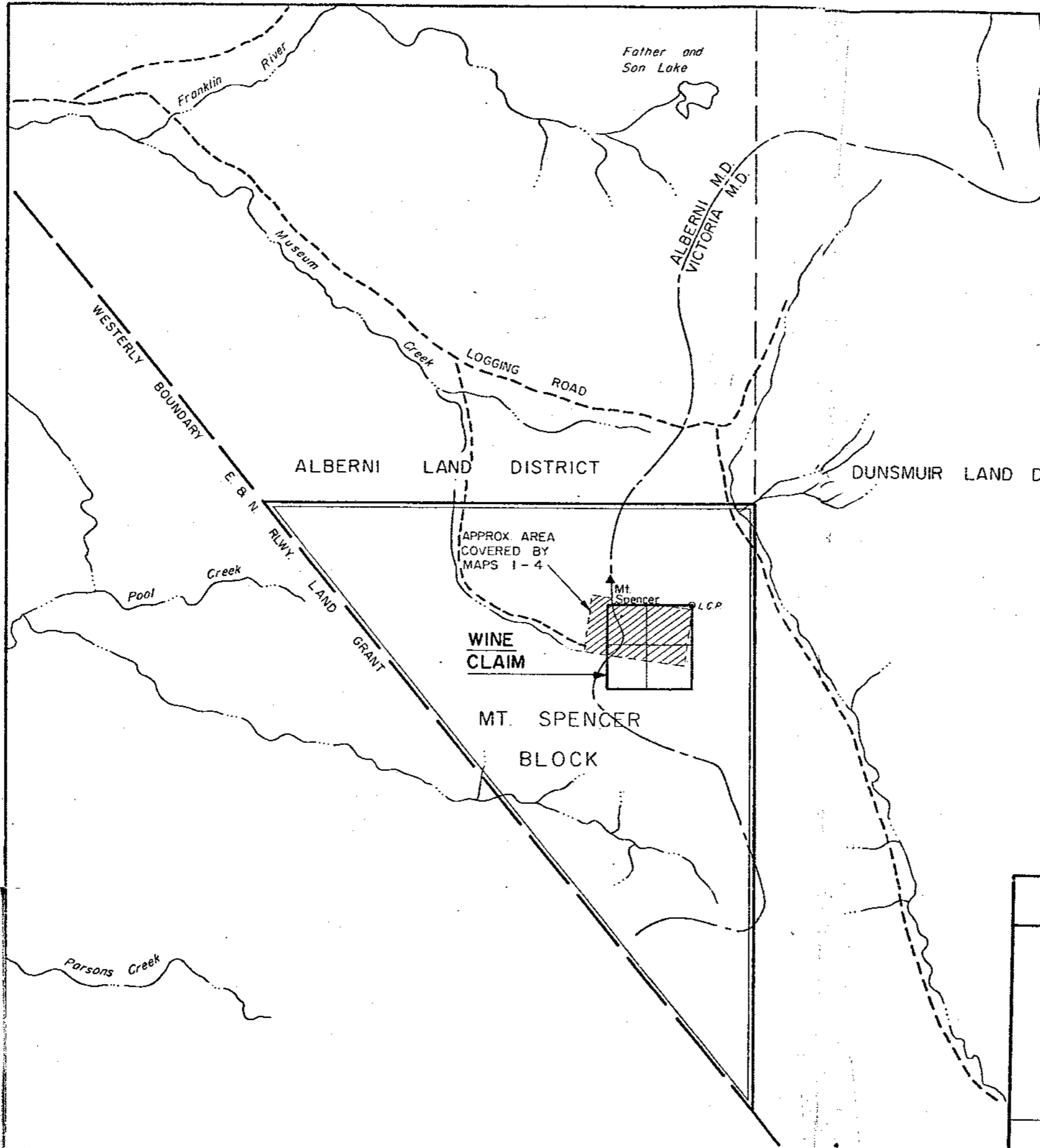
D.D. HOLES 76-1, 76-2, 76-3 AND  
GUNNEX 66-7  
SCALE ~ 1" = 100'

Aug. 1976

J.P.E.

Note - All drill cores stored on Property

MINERAL RESOURCES BRANCH  
ASSESSMENT REPORT  
**6134**  
NO.



MINERAL RESOURCES BRANCH  
 ASSESSMENT REPORT  
 NO. **6134**

Note: Claims drawn from Mineral Claim Map 92F/2E (M) and are approximate only.

**GOLD VALLEY RESOURCES LTD.**

LOCATION MAP  
 OF  
**MT. SPENCER BLOCK  
 AND  
 WINE CLAIM**

ALBERNI & VICTORIA M.D., BC  
 SCALE: 1:50,000

December 1975

*J.P. Elwell*

# 6134

## DIAMOND DRILL SAMPLING RECORD

Party MT. SPENCER

DIP TESTS

Hole No. 76-2

Started .....

Bearing 20° Dip at Collar -55° Hor. Comp. .... Ver. Comp. ....

Sheet No. 2

Finished .....

Location ..... Elevation ..... Lat. .... Dept. ....

Logged by J. P. ELWELL

Purpose of Hole .....

Distance			DESCRIPTION	Sample No.	From	To	L	Analysis				PROGRESSIVE TOTALS							
From	To	Core%						Au	Ag	Cu%	Mo%	FEET & PER CENT							
188	191		very sparce cpy. min., dark volcanics																
191	194		fair cpy. min. (est. 2%)																
194	210		barren except for very min. cpy. on frac.	936	188.6	193.5	5	0.005	0.24	0.33									
210	218		very minor min.																
218	224		increase in cpy. as blebs & pods (low grade)	937	218	223	5	0.005	0.06	0.50									
224	234		barren volcanics																
234	257		barren vol. talcy shear zone 249-257																
257	289		barren vol., - minor calcite stringer																
289	297		barren vol., - hematite stain on fract.																
297	300		barren - end of hole																

\*6134

# DIAMOND DRILL SAMPLING RECORD

DIP TESTS

Hole No. 76-2  
Sheet No. 1

Property MT. SPENCER

Started ..... Bearing 20° Dip at Collar -55° Hor. Comp. .... Ver. Comp. ....

Finished ..... Location ..... Elevation 3332 Lat. .... Dept. ....

Logged by J. P. ELWELL Purpose of Hole .....

Distance			DESCRIPTION	Sample No.	From	To	L	Analysis				PROGRESSIVE TOTALS							
From	To	Core%						Au. oz/ton	Ag. oz/ton	Cu%	Mo%	FEET & PER CENT							
0	2		casing																
2	26		barren vol. minor py. at 25'																
26	42		barren grey vol. except for minor py.																
42	48		same, very minor cpy.																
48	49		qtz. vein 1'																
49	72		barren vol. except for minor pyrrho.																
72	75		same																
75	77		frac. vol. cemented w. calcite, min. pyrrho.																
77	78		barren volcanics																
78	79		heavy pyrrho.																
79	84		barren volcanics																
84	84.5		heavy pyrrho.																
84.5	95		barren volcanics, calcite stringers																
95	118.5		same																
118.5	125		same																
125	131		cpy., pyrrho. w. qtz., est. 20% sulphides	930	125	131	6	0.024	1.76	3.52	0.002								
131	137		barren volcanics																
137	138		rust seam - fault																
138	148		barren volcanics																
148	152		some cpy. veinlets, calcite, porphyritic volcanics																
152	162		calcite stringers minor cpy.																
162	163		cpy. w. calcite cutting at 60°																
163	168		barren vol. except stringer with cpy. at 166'																
168	173		good cpy. in white qtz.	931	168	173.5	5.5	0.010	0.57	1.68	0.018								
173	175		sparce cpy. in dark volcanics	934	173.6	↑ 4		0.004	Tr.	0.18									
175	178		fair cpy. min.			177.6													
178	184		very minor cpy. in dark vol. some pyrrho.																
184	188		fair grade chalcopryrite in volcanics	935	183.6	↑ 5		0.005	0.38	0.62									
						188.6													

# 6134

# DIAMOND DRILL SAMPLING RECORD

DIP TESTS

Hole No. 76-1  
Sheet No. 2

Property MT. SPENCER

Started ..... Bearing 20° Dip at Collar -35° Hor. Comp. .... Ver. Comp. ....

Finished ..... Location ..... Elevation ..... Lat. .... Dept. ....

Logged by J. P. ELWELL Purpose of Hole .....

Distance			DESCRIPTION	Sample No.	From	To	L	Analysis				PROGRESSIVE TOTALS							
From	To	Core%						Au oz/ton	Ag oz/ton	Cu%	Mo%	FEET & PER CENT							
115.5	140		barren vol., minor qtz.-carb. veinlets																
140	148.5		barren, volcanics																
148.5	149		qtz. stringers with cpy.																
149	152		barren volcanics																
152	162.5		barren vol., very minor pyrrho.																
162.5	170		volcanics with minor qtz. veins																
170	173		rusty frac. incr. cpy. (0.5%)	929	170	173	3	0.009	0.48	0.76	0.005								
173	175		barren volcanics																
175	177		pyrrho. & cpy. as blebs & diss.	932	175.75	↑	1.5	0.005	Tr.	0.47									
177	185		volcanics - very minor pyrrho.																
185	200		same																
200	202		cpy. & pyrrho. in dark vol. w. qtz.	933	210	202	2	0.005	0.08	0.59									
202	206		vol., barren except for minor pyrrho.																
206	213		same as above																
213	214.5		increase in pyrrho. & cpy.	927	212	214.5	↓ 2.5	0.004	0.10	0.29	0.011								
214.5	217		heavy cpy. & pyrrho., est. 10% Cu.	926	214.5	217	2.5	0.016	5.25	10.30	0.006								
217	227		Barren volcanics																
227	228		rusty fault zone																
228	249		barren vol., somewhat porphyritic																
end of hole																			

# 6134

Property MT. SPENCER

# DIAMOND DRILL SAMPLING RECORD

DIP TESTS

Hole No. 76-1

Sheet No. 1

Started ..... Bearing 20° Dip at Collar -35° Hor. Comp. .... Ver. Comp. ....

Finished ..... Location ..... Elevation ..... Lat. .... Dept. ....

Logged by J. P. ELWELL Purpose of Hole .....

Distance			DESCRIPTION	Sample No.	From	To	L	Analysis				PROGRESSIVE TOTALS							
From	To	Core %						Au	Ag	Cu%	Mo%	FEET & PER CENT							
0	2		Casing																
2	12		grey porph. volcanics, rusty fractures					oz/ton	oz/ton										
12	13		rusty alteration, pyrrho on fractures																
13	15		alt. volcanic oxidation. Fault zone																
15	24		grey porph. volcanics																
24	26		same with minor blebs pyrrho.																
26	30		grey volcanics. no mineralization																
30	32		alt. vol. rusty frac. with pyrrho.																
32	34.5		grey vol. min. pyrrho. cpy. 33-34.5																
34.5	39		darker fine gr. vol. more pyrrho. mainly on frac. at 60°																
39	40		barren grey volcanics																
40	42.5		volcanics, some pyrrho.																
42.5	43		qtz. stringer																
43	47		volc. diss. pyrrho., qtz. veinlets																
47	63.5		vol. min. pyrrho. along frac. and as dissem. occ. small blebs cpy.																
63.5	69		frac. vol., qtz. carb. veins																
69	71		vol. & qtz. cpy. est. 0.5%	928	67.5			0.004	0.12	0.59	0.027								
71	73		some pyrrho., cpy. with qtz.																
73	83		barren volcanics																
83	94		grey vol., minor pyrrho. as blebs, cpy.																
94	109		same as above																
109	111		fault zone																
111	115		grey vol., minor pyrrho. as blebs																

# DIAMOND DRILL SAMPLING RECORD

DIP TESTS

Hole No. 76-3

Sheet No. 1

Property MT. SPENCER

Started

Bearing 20° Dip at Collar -70° Hor. Comp. Ver. Comp.

Finished

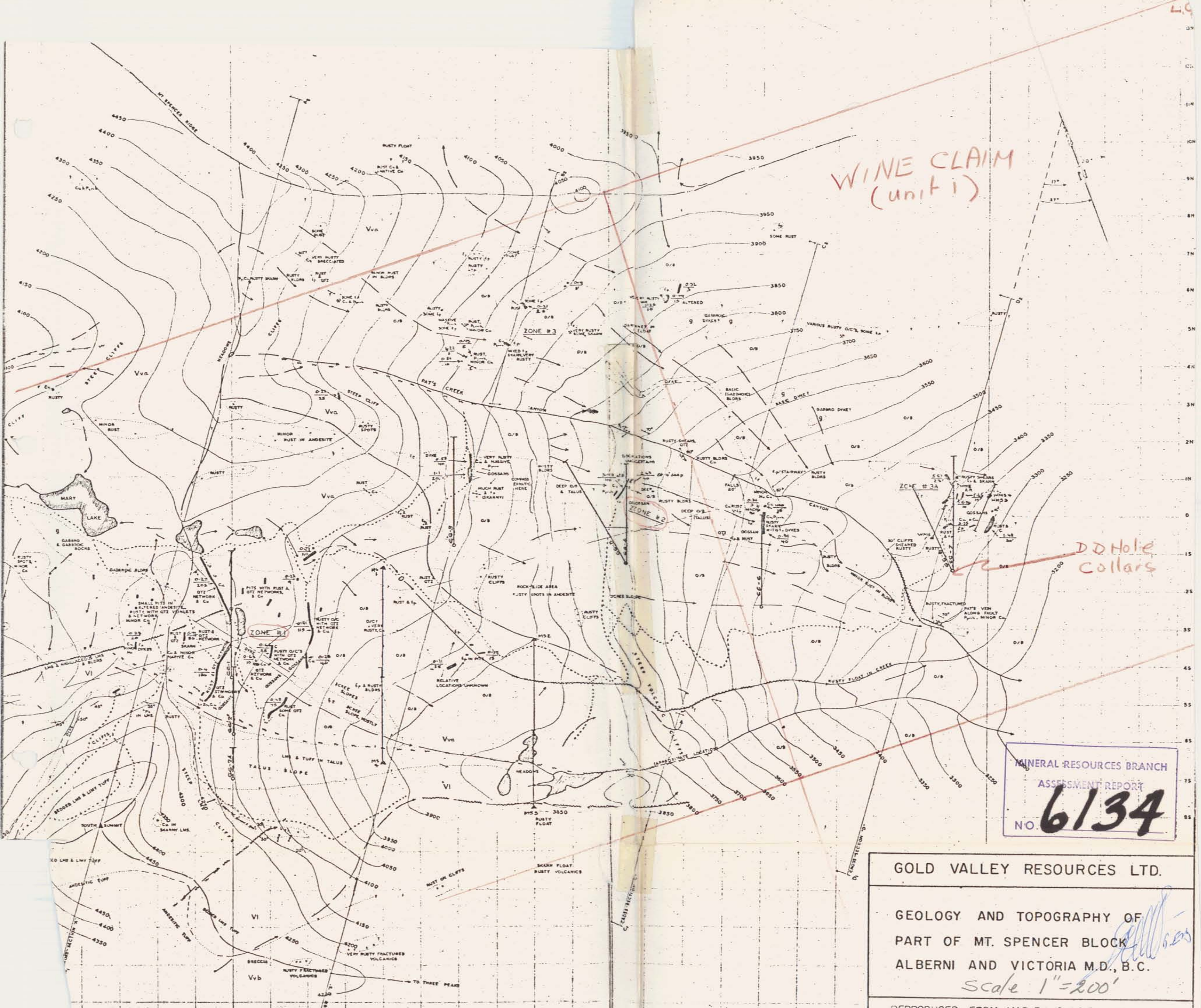
Location Elevation Lat. Dept.

Logged by J. P. ELWELL

Purpose of Hole

Distance			DESCRIPTION	Sample No.	From	To	L	Analysis	PROGRESSIVE TOTALS				
From	To	Core%							FEET & PER CENT				
0	2		casing										
2	24		barren volcanics, minor calcite stringers										
24	34		volcanics, barren except for sparse blebs py. and very minor cpy.										
34	75		barren porphyritic volcanics										
75	77		increase in pyrrho., minor cpy., qtz.										
77	119		very minor pyrrho., calcite stringers										
119	125		dark volcanics, increase in pyrrho. & cpy. calcite on fractures at 30°										
125	163		barren dark volcanics, minor pyrrho.										
163	168		increasing mineralization (est. 0.6% Cu)										
168	178		barren dark volcanics										
178	179		dark volcanics, minor cpy.										
179	183		barren volcanics										
183	185		cpy. est. at 2.0% Cu also MoS2 on fractures										
185	188		barren volcanics										
188	193		sparse to minor cpy. in volcanics										
193	235		barren, dark volcanics										
235	303		volcanics, occasional sparse pyrrho., cpy. and py.										
end	of hole												





WINE CLAIM  
(unit 1)

DD Hole  
collars

MINERAL RESOURCES BRANCH  
ASSESSMENT REPORT  
**6134**  
NO.

GOLD VALLEY RESOURCES LTD.

GEOLOGY AND TOPOGRAPHY OF  
PART OF MT. SPENCER BLOCK  
ALBERNI AND VICTORIA M.D., B.C.

Scale 1" = 200'

REPRODUCED FROM MAP BY GUNNEX LTD. 1965