

77-#56-# 6181

6181

GEOPHYSICAL ASSESSMENT REPORT

on a

Ground Fluxgate Magnetometer Survey

over portions of the

MAD and RYE

GROUPS of MINERAL CLAIMS

Situated near

Weaver Lake/Harrison Lake Area,

New Westminster Mining Division,

British Columbia.

N. T. S. 92H/5 W.

Latitude: 49° 20' North,

Longitude: 121° 50' West.

on behalf of:

AARON MINING LTD. (N. P. L.)

Field Work Between

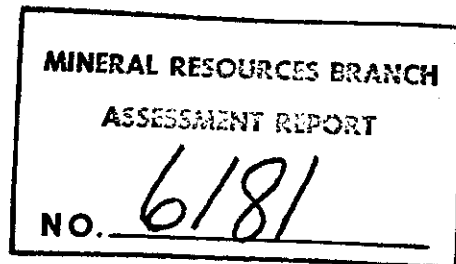
January 25, and 29, 1977.

REPORT BY:

D. R. COCHRANE, P. Eng.,

February 8, 1977,

Delta, British Columbia.



Cochrane Consultants Limited
4882 Delta St., Delta, B.C. V4K 2T8 946-9221
Geotechnical Consulting / Exploration Services

geology
geophysics
geochemistry

TABLE OF CONTENTS

	<u>Page</u>
1. INTRODUCTION	1
2. LOCATION AND ACCESS	2
3. CLAIMS INFORMATION	2
4. SETTING	3
5. HISTORY	3
6. INSTRUMENTATION AND PROCEDURES	4
7. DISCUSSION OF RESULTS	5

APPENDICES

- I Assessment Work Details & Costs
- II Certificate

FIGURES

- | | |
|---------------------------|-------------|
| 1. Location Map | report body |
| 2. Claims Map | report body |
| #1 3. Magnetometer Values | map pocket |
| #2 4. Isomagnetic Plan | map pocket |



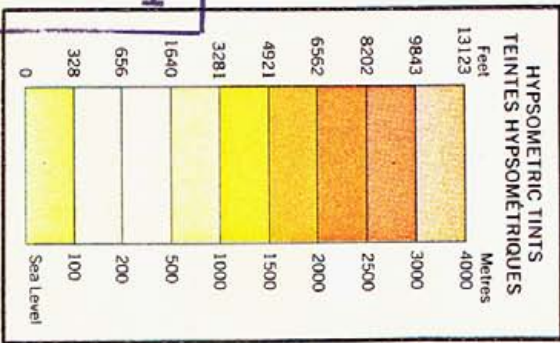
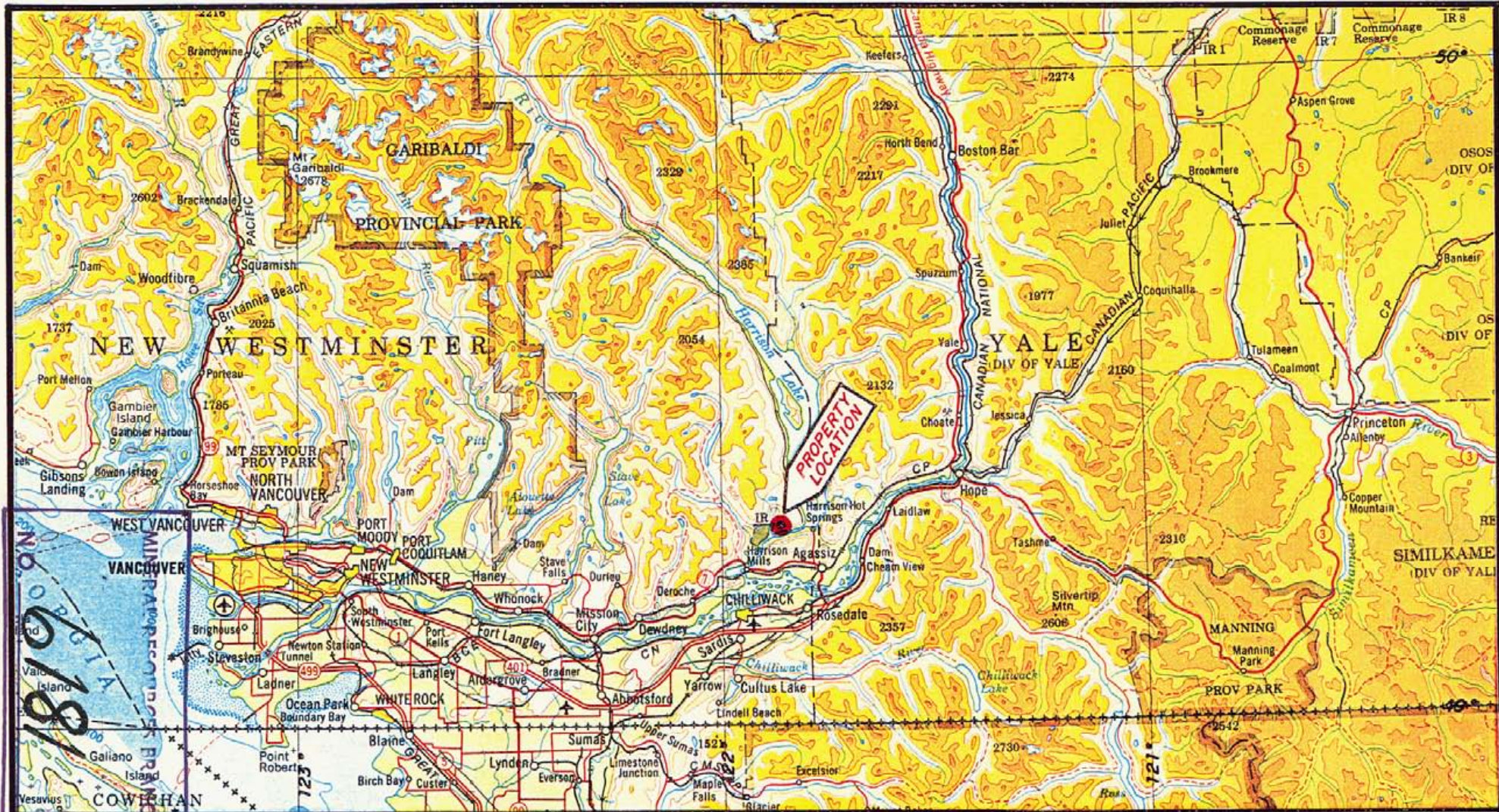
1. INTRODUCTION

During the latter part of January, 1977, Messrs. Chase and Ashe completed some 6.4 line kilometers (4 miles) of ground fluxgate magnetometer surveying on portions of the MAD and Rye Groups of claims centered 6 air kilometers northwest of Harrison Hot Springs, New Westminster Mining Division, Southern British Columbia.

The purpose of the work was to further explore a heavily overburdened area, by indirect geophysical means, which is known to contain gold and silver values in exposed and trenched bedrock.

This report describes the setting and procedures used and discusses the results obtained. It contains information relating to assessment work and a section designated "Assessment Work Details", including costs, is appended.





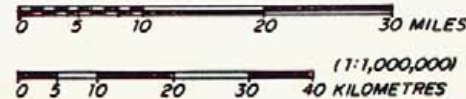
Above map is from Dept. of Energy, Mines & Resources "Vancouver NM 9/10", 1969.



AARON MINING LTD. (N.P.L.)

MAD & RYE CLAIMS PROJECT
 NEW WESTMINSTER M. D.
 LOCATION MAP

HARRISON L. AREA
 N.T.S. 92 H / 5 W.
 FIGURE 1



(1" = 15.75 MILES)
 DWN: B.A.C., FEB/77
 Cochrane Consultants Limited
 4882 Delta Street — Delta B.C.

2. LOCATION AND ACCESS

The claims are located some 90 air kilometers due east of Vancouver, and 6 kilometers northwest of Harrison Hot Springs, Southern British Columbia. Normal access is by car or truck, northeasterly from Highway No. 7 and Harrison Mills via a series of secondary and logging roads to the Weaver Creek Valley and claim group (a total distance of 11 kilometers). Several logging roads provide fair access to the claims area.

3. CLAIMS INFORMATION

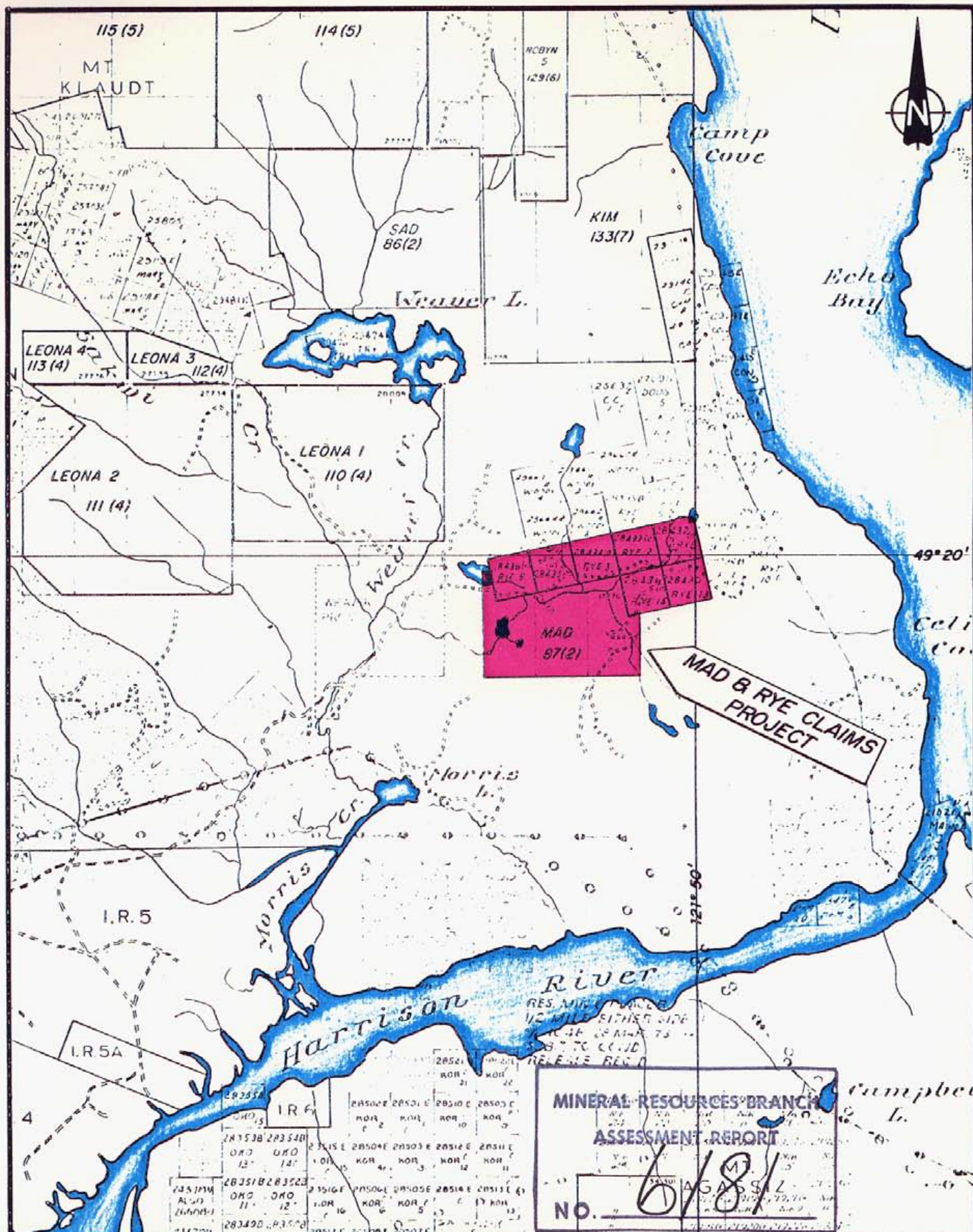
The MAD and Rye claims are owned outright by Aaron Mining Ltd. (NPL) of Vancouver, B.C. and make up a contiguous block of claims which includes seven (7) "Old" Rye claims, and a new block of six (6) units recorded on February 12, 1976.

The following table lists pertinent claims information:

<u>Claim Name</u>	<u>Record No.</u>	<u>Expiry Date</u>
MAD (6 units)	87	Feb. 12, 1977
Rye 1	28432	March 15, 1979
Rye 2	28433	March 15, 1981
Rye 3 to 5	28434/36	March 15, 1979
Rye 13 and 15	28430 and 31	March 8, 1979

The claims are located in the New Westminster Mining Division and are shown on Mineral Claims Map No. 92H/5W.





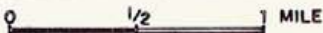
Above map from Dept of Mines & Petroleum Resources Mineral Claim Map 92H/5W.

1:50,000



Feb/77
B.C.

1.25" = 1 MI.



CLAIMS MAP
FIGURE 2

MINERAL RESOURCES BRANCH
ASSESSMENT REPORT
No. 6/81

AARON MINING LTD. (N.P.L.)
MAD & RYE CLAIMS PROJECT
HARRISON L. AREA
NEW WESTMINSTER M. D. N. T. S. 92 H/5 W.

4. SETTING

The claims are situated in the Coast Range Mountains immediately north of the Fraser Valley and immediately west of Harrison Lake. The general country is quite rugged, well forested and is normally characterized by a damp coastal climate. The claims however, lie in an east spur of Weaver Valley and at low elevations (150 meters above sea level). A steep, north facing slope lies to the south of the claims.

The region is underlain by rocks assigned to the Harrison Lake formation (Mid Jurassic intermediate volcanics and pyroclassics) which is intruded by Coast Range acidic rocks and basic dikes of questionable age (G.S.C. Map 69-47).

The aeromagnetic map of the area (G.S.C. Map 8538G-Harrison Lake Sheet) shows the claims lie in an area of gentle magnetic relief and within a weak, east-west trending magnetic low ranging in amplitude from just below 56,840 gammas near Harrison Lake to about the 56,900 gamma level.

5. HISTORY

The following section on history is by permission and from a report on the property by Mr. C. J. Coveney, dated Feb. 23, 1976.

"In 1974 the company carried out a geochemical grid survey that totalled 33,000 feet of line cutting along which 248 soil samples were taken. The survey outlines a number of anomalous silver values particularly on claims Rye #2 and #3. A sample from a trench on the Rye #2 claim, in the vicinity



of high anomalous values, assayed 1.86 ozs. Au; 58.61 ozs. Ag and 7.23% Zn. Also in 1974, four (4) short diamond drill holes for a total of 607 feet were drilled."

6. INSTRUMENTATION AND PROCEDURES

A Scintrex MF-2 fluxgate magnetometer was operated by Mr. W. Chase, (an experienced geophysical operator) along previously cut lines on the MAD and Rye claims. A main magnetic base station was selected at the west end of the survey area on February 26, 1977, and the instrument arbitrarily set to read plus 500 gammas at this station. Readings were taken along the lines at 50 foot intervals and the base station was "checked into" at approximately one hour intervals, and this hourly check was used to correct for magnetic variation. During the 3 day survey the main base station fluctuated in amplitude by a maximum of 60 gammas, but most checks were within a few 10's of gammas. The corrected results, therefore, are believed to be correct to within about ± 40 gammas.

A frequency histogram of corrected magnetometer results was prepared by the author from a random sample of just over 100 values. The most frequent reading (modal class) was in the 200 to 300 gamma range (32% of the population) and a distinct break in the histogram occurred at 650 gammas (see Figure 4). This suggests then that two distinct rock units, with characteristic magnetic response, underlie the survey area.



7. DISCUSSION OF RESULTS

Based on the elementary statistical analysis of the data, the following magnetic classes have been defined.

<u>From</u>	<u>To (but not including)</u>	<u>Designation</u>
less than 100		anomalously low
100	250	below average
250	600	above average
600	above	anomalously high

The "average" or most frequent response class (i.e. in the 100 to 600 gamma range) are believed to indicate Harrison Lake group rocks, and the anomalously high and anomalously low groups are presumed to be response from more basic rocks (dikes etc.) with high magnetic values accompanied by associated dipole lows.

Figure 4 is the isomagnetic plan, and shows in general a very gentle east-west trending isomagnetic pattern which is dissected with a series of north trending magnetic highs (and associated dipole lows). The high magnetic bands are interpreted as response from north trending tabular basic bodies (dikes, sills, etc.). The highs are superimposed on the weak east-west trend and these combine to form a rectilinear magnetic pattern.

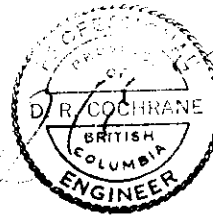
A northeast by east magnetic linear trends through the survey area and interrupts several northerly striking magnetic trends and this linear may in fact be caused by a throughgoing fault or shear zone. This feature is designated A-A'.

Magnetometer surveying on the MAD and Rye claims appears to be a useful exploration tool and further work is suggested in order to



determine the cause of the magnetic highs and the relation of the anomalies to the previously discovered gold and silver values.

Respectfully submitted,



D. R. Cochrane, P.Eng.
February 8, 1977.



Appendix I

ASSESSMENT WORK DETAILS & COSTS

Project: MAD and Rye claims-Ground Magnetometer Survey

Location: by road, 11 km. N.E. of Harrison Mills, near Weaver Lake

N.T.S. 92 H/5W

Sponsor: Aaron Mining Ltd. (NPL), Vancouver, B.C.

Dates: (a) Field Work, Jan. 26, 27 and 28, 1977
(b) Drafting
(c) Report preparation: February 8, 1977

Personnel:

- (a) Field: Mr. W. Chase, Instrument operator
(Cochrane Consultants Ltd.) and
Mr. D. Ashe, helper
- (b) Drafting: B. A. Cochrane
- (c) Report: D. R. Cochrane, P.Eng.

Instruments: Scintrex MF-2 fluxgate magnetometer, readability
± 10 gammas on 0 - 1000 gamma scale

Field Method: Hourly check into main base station in "loop" pattern

Survey Details: 6.4 line kilometers mainly along pre-existing lines
with stations at 50 foot intervals.

COSTS:

1. Wages: W. Chase, 3 field days, one day data processing and preparation - Total 4 days @ \$75.00/day	\$ 300.00
2. Magnetometer Rental - 3 days @ \$10.50/day plus \$10 battery charge	41.50
3. (a) Drafting - 28.5 hours @ \$10.75/hour	306.38
(b) Typing, Reproduction, and Binding	52.99
4. Report - D. R. Cochrane, P.Eng. - 1 day @ \$220.00/day	220.00
5. Vehicle Expense - 3 days @ \$20.00/day	60.00
186 miles @ 0.20¢/mile	37.20
6. Camp costs - 2 men/3 days each @ \$10/man/day	60.00
Total	<u>1,078.70</u>

Cost appropriation for MAD group \$600.00

One years assessment to apply on six units of MAD claims.



APPENDIX II

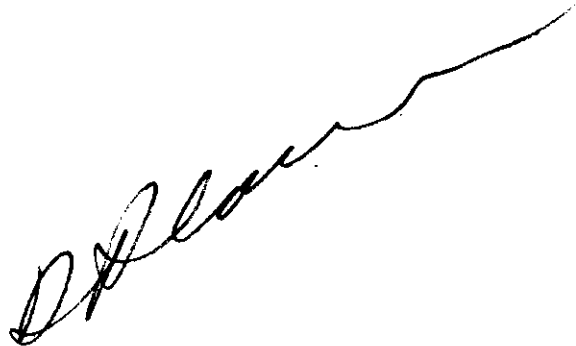
Certificate:

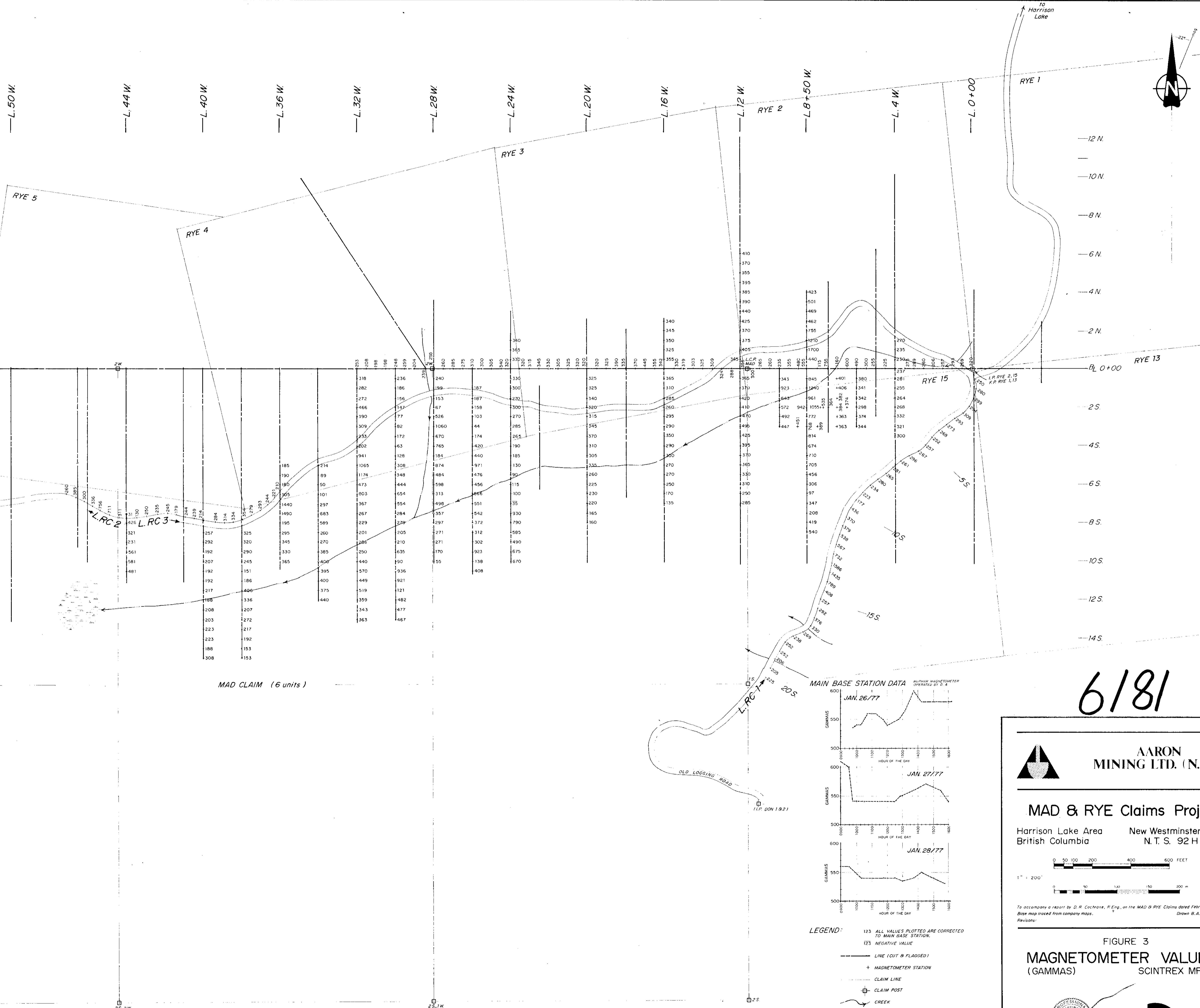
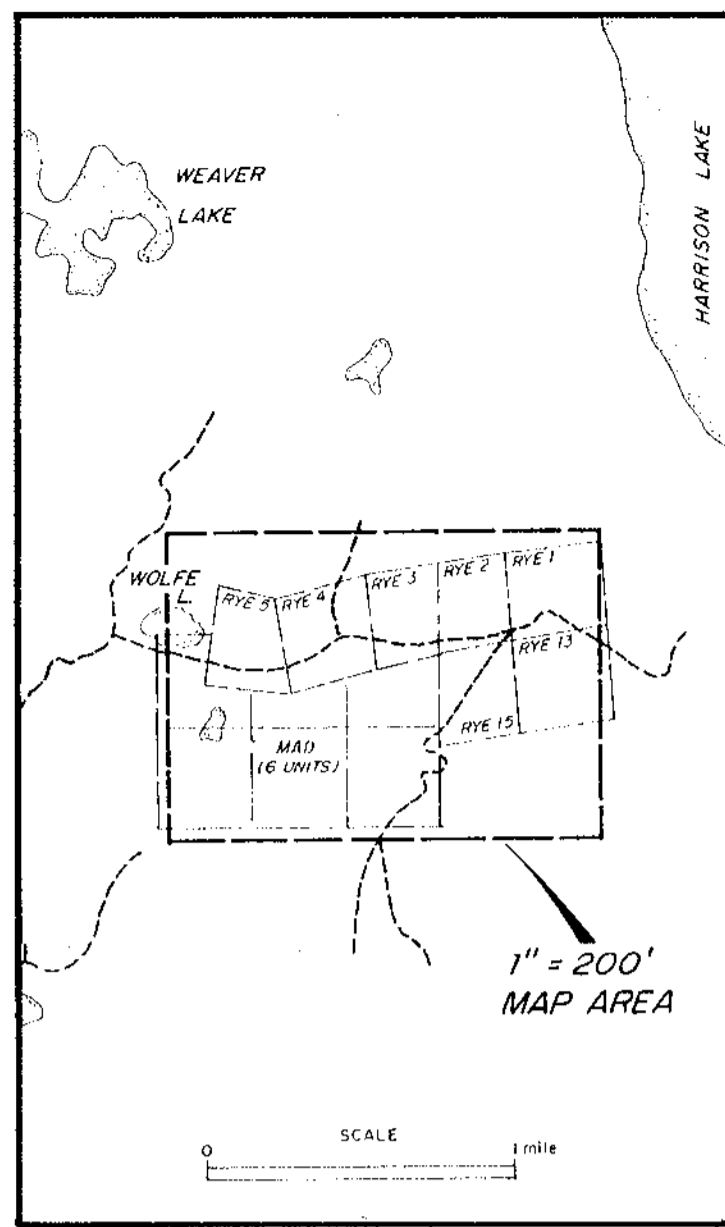
I, Donald Robert Cochrane, of the Municipality of Delta, British Columbia, do hereby certify that:

1. I am a consulting geological engineer with an office at 4882 Delta St., Delta, B. C.
2. I am a graduate of the University of Toronto (1962) with a degree in Applied Geology (B.A. Sc.) and a graduate of Queen's University (1964) with a degree in Economic Geology (M. Sc., Eng.)
3. I have practiced my profession continuously since graduation while being employed by such companies as Noranda Exploration Co. Ltd., Quebec Cartier Mines, and Meridian Explorations Syndicate. I have been in private independant practice since 1969.
4. I have no interest, either direct or indirect in the properties or securities of Aaron Mining Ltd., nor do I expect to acquire any such interest.
5. I am a member in good standing of the Association of Professional Engineers (A.P.E.) of the Province of British Columbia, and also a member of the A.P.E. in the Province of Ontario, Saskatchewan, and the Yukon Territories.

February 8, 1977.
Delta, B. C.

(signed) D. R. Cochrane, P. Eng.

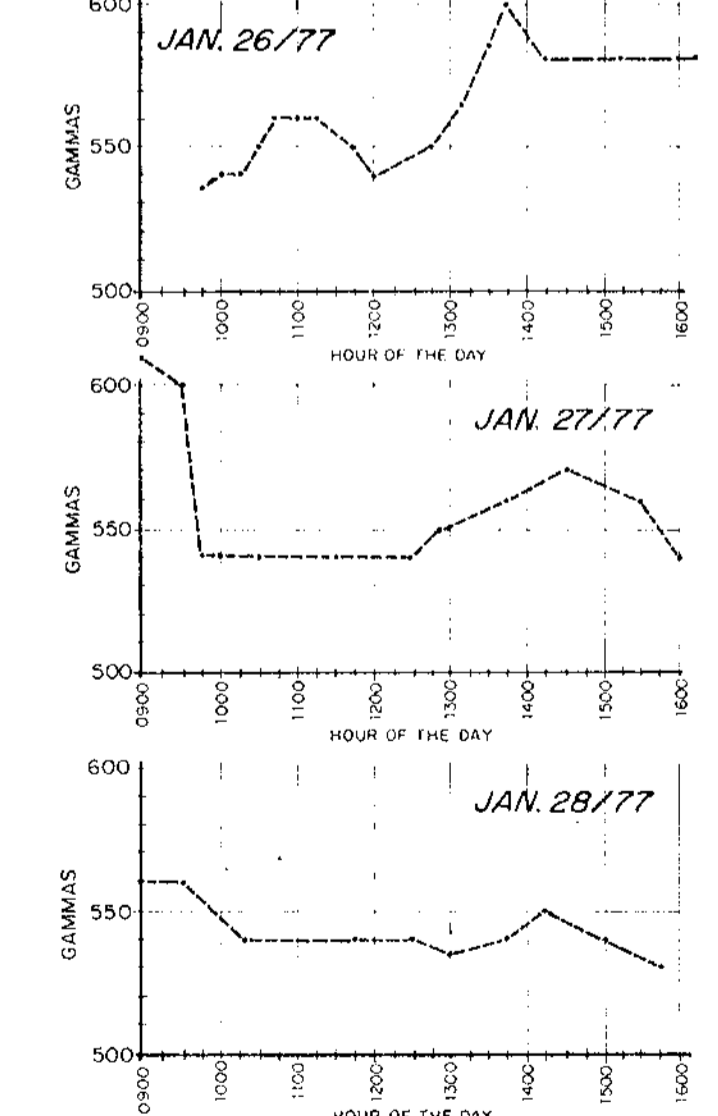




MAIN MAGNETIC BASE STATION
 READ 500 GAMMAS - JAN 26/77
 FOR ABSOLUTE VALUE ADD 56,380 GAMMAS.

MAD CLAIM (6 units)

MAIN BASE STATION DATA

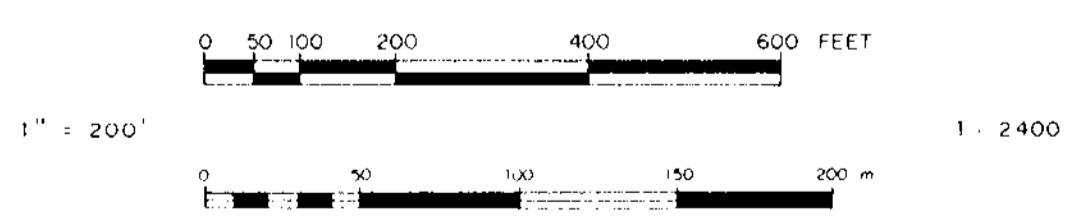


LEGEND:
 123 ALL VALUES PLOTTED ARE CORRECTED TO MAIN BASE STATION.
 123 NEGATIVE VALUE
 --- LINE (CUT & FLAGGED)
 + MAGNETOMETER STATION
 --- CLAIM LINE
 □ CLAIM POST
 ~~~~~ CREEK  
 --- ROAD  
 --- SWAMP  
 SCINTREX MF-2 OPERATED BY W.H.C.

6181

AARON MINING LTD. (N.P.L.)

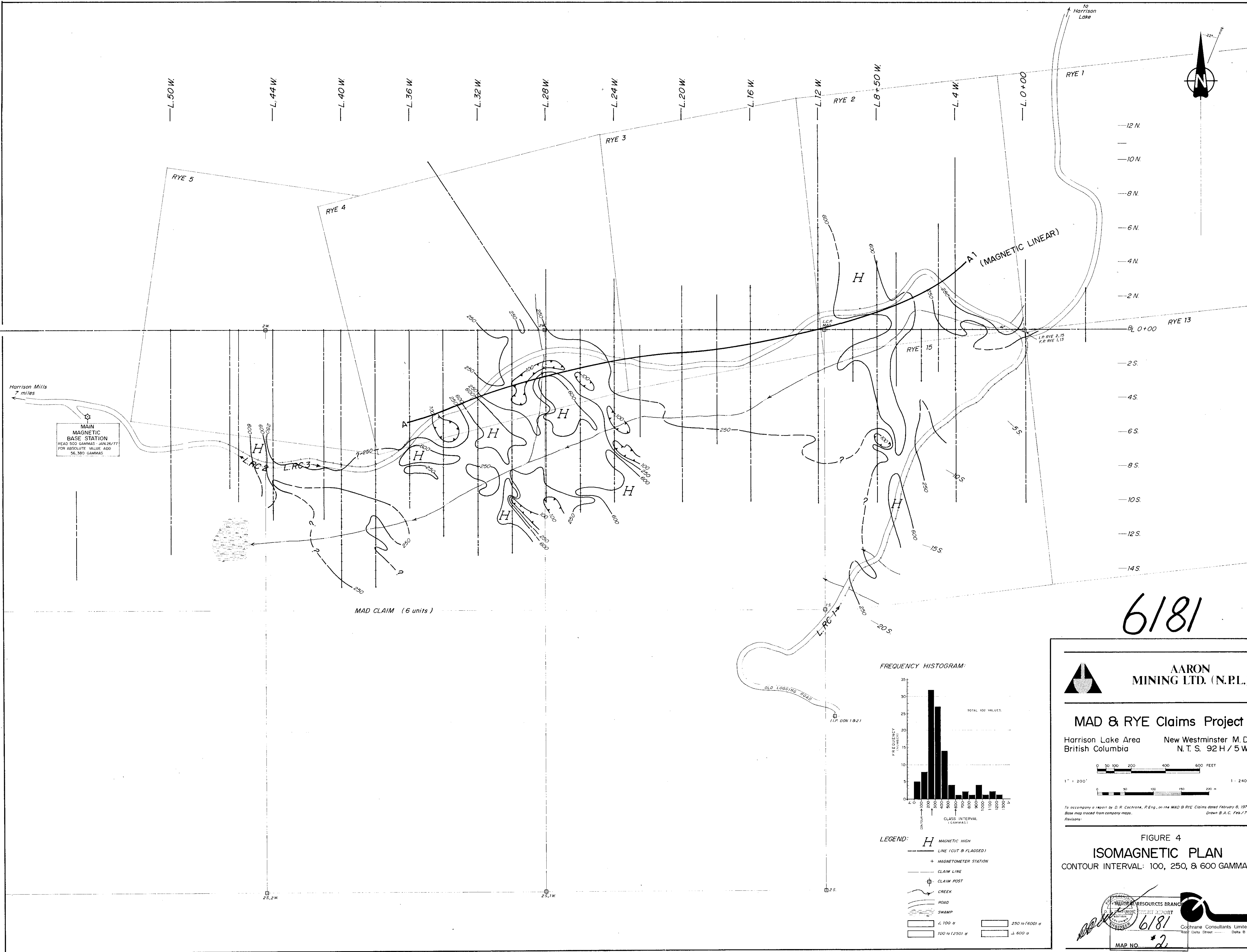
MAD & RYE Claims Project  
 Harrison Lake Area New Westminster M. D.  
 British Columbia N.T.S. 92 H / 5 W.



To accompany a report by D. R. Cochrane, P. Eng., on the MAD & RYE Claims dated February 8, 1977.  
 Base map traced from company maps. Drawn B.A.C. Feb/77.  
 Revisions:

FIGURE 3  
 MAGNETOMETER VALUES  
 (GAMMAS) SCINTREX MF-2

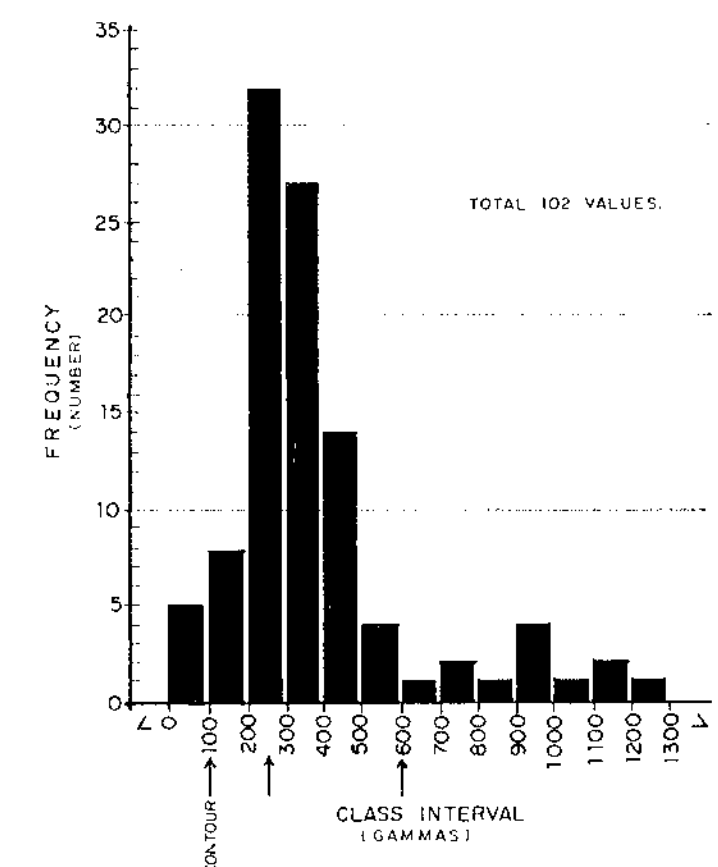
COCHRANE CONSULTANTS LIMITED  
 CONSULTANT REPORT  
 NO. 6181  
 #1  
 MAP NO. 1  
 Cochrane Consultants Limited  
 4882 Delta Street Delta B.C.



6181

MAIN  
MAGNETIC  
BASE STATION  
READ 500 GAMMAS - JAN 26/77  
FOR ABSOLUTE VALUE ADD  
56,350 GAMMAS

FREQUENCY HISTOGRAM:

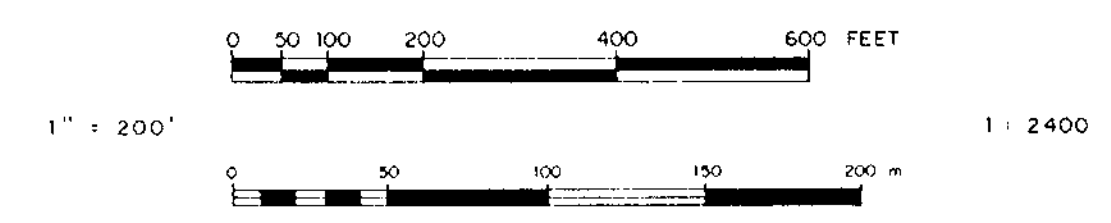


LEGEND:

- H MAGNETIC HIGH
- LINE (CUT & FLAGGED)
- + MAGNETOMETER STATION
- CLAIM LINE
- CLAIM POST
- ~ CREEK
- ROAD
- SWAMP
- 0 to 100 g
- 100 to 250 g
- 250 to 600 g
- 600 g

**AARON MINING LTD. (N.P.L.)**

**MAD & RYE Claims Project**  
Harrison Lake Area New Westminster M.D.  
British Columbia N.T.S. 92 H / 5 W.



This accompany is report by D.R. Cochrane, P.Eng., on the MAD & RYE Claims dated February 8, 1977.  
Data map traced from company maps. Drawn B.A.C. Feb/77.  
Revisions:

**FIGURE 4**  
**ISOMAGNETIC PLAN**  
CONTOUR INTERVAL: 100, 250, & 600 GAMMAS

WARRIOR RESOURCES BRANCH  
MINING REPORT  
6181  
Cochrane Consultants Limited  
2887 Delta Street Delta B.C.  
MAP NO. #2