



EXPLORATION of CANADA LTD.

3540 West 41st. Ave., Vancouver, B.C. V6N 3E6

BUS 263-2678

RES 733-6902

6182

DRILLING REPORT - PROVENCHER LAKE JADE CAMP. 1976

PREPARED FOR:

NEPHRO-JADE CANADA LTD.

by:

B.J. PRICE, M.Sc.,

PETRA GEM EXPLORTION LIMITED.

MINERAL RESOURCES BRANCH
ASSESSMENT REPORT

NO. _____

VANCOUVER, B.C.

JAN.23, 1977



PETRA GEM EXPLORATION of CANADA LTD.

3540 West 41st. Ave., Vancouver, B.C. V6N 3E6
BUS 263-2678 RES 733-6902

DRILLING REPORT - PROVENCHER LAKE, 1976

INTRODUCTION:

During the period July 4 to October 4, 1976, a crew averaging 5 men drilled a total of 143 jade boulders at the Provencher Lake Jade camp. Boulders were drilled in 10 separate areas, on placer leases and hardrock claims.

LOCATION AND ACCESS:

Provencher Lake is located 52 miles east of Dease Lake, B.C. as is shown on the accompanying location map. Access is by float aircraft based in Watson Lake, Y.T. or by helicopter from Dease Lake, B.C. or Watson Lake, Y.T.

CLAIMS:

Placer leases and Mineral Claims are shown on the accompanying maps and complete lists are included in the appendix. Drilling areas are outline on the lease map.

1976 DRILLING:

During the 1976 drilling season a total of 8 drillers were employed under supervision of Len Rae and Geologist B.Price. The property was managed by L.D.Barr (Delphi resources Ltd.) Drilling was done by small "packsack" drills. A total of 140 boulders were drilled for exploration purposes, with footage totalling 422 feet. On 3 large boulders, lines of holes were drilled and wedged to split them into manageable sections. On these 3 boulders, 860.2 feet were drilled. Only the footage drilled for exploration purposes is claimed for assessment, and drilling costs have been apportioned on the basis of percentage calculated from drilling footages



Thus, drilling costs of \$97.34 per foot are used in applying work.

Most core drilled on exploration boulders were of poor quality. Cores from the three large boulders proved to be of good gem quality. All material cored was jade and no "logs" are kept because the holes are short. The cores are kept at Nephro Jade Canada Ltd. , #200. 3540 w. 41.Ave., Vancouver, B.C.

Barry Price.

Barry Price, M.Sc.,
Geologist,
Jan 23, 1977.

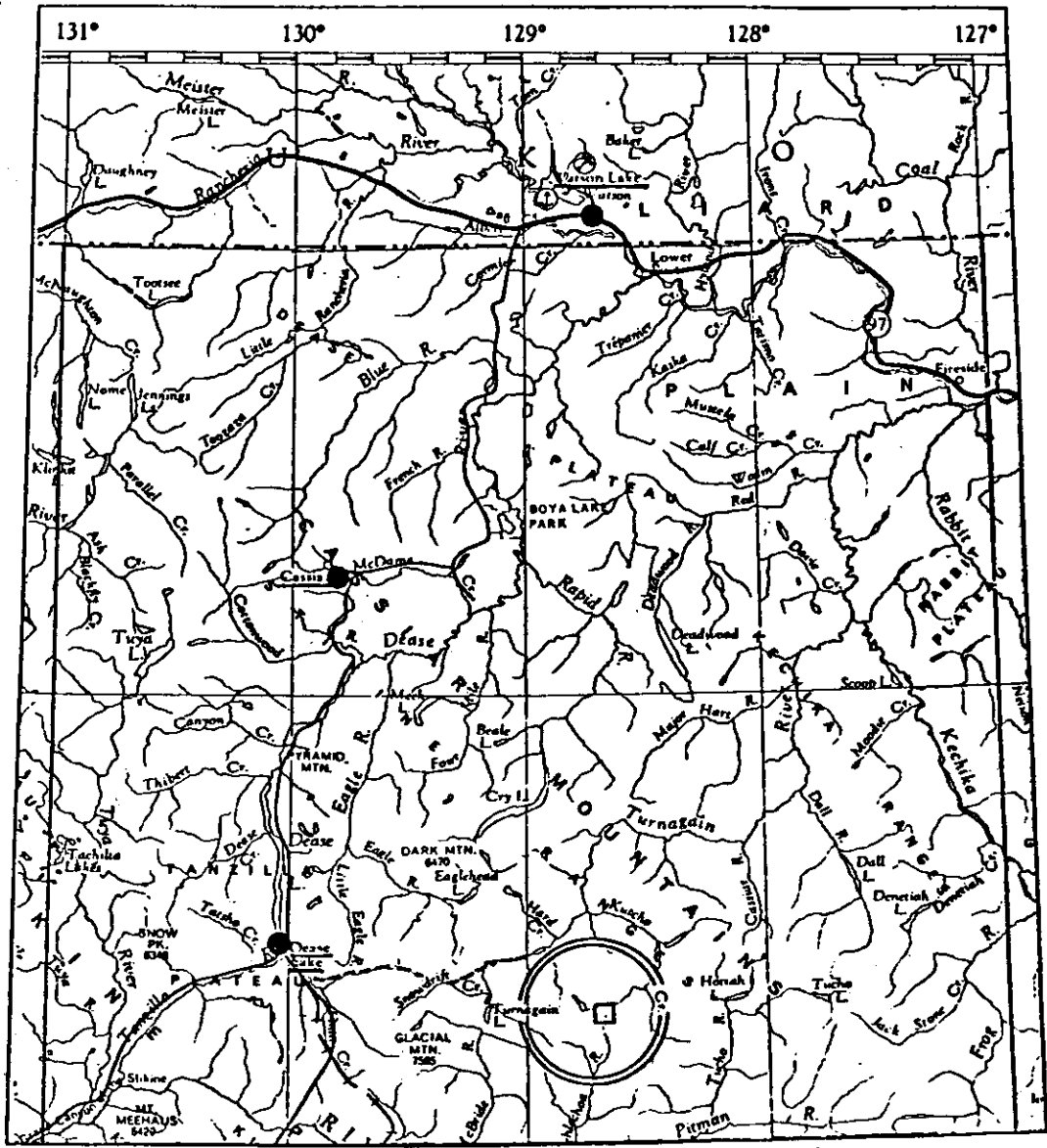


FIG. 1. Location map of Dease Lake - Watson Lake area. Large circle outlines Provencher Lake area. Scale: 1 in = 30 mi.

104 I/7E (I)
(SEE ALSO PLACER)

N

2



58° 15'

128° 45' LIARD MINING DIVISION

TO SOUTH SEE MAP 104 I/2

PROVENCHER LAKE PLACER LEASE MAP.

JAN 1977.

B. PRICE

May 17

May 17

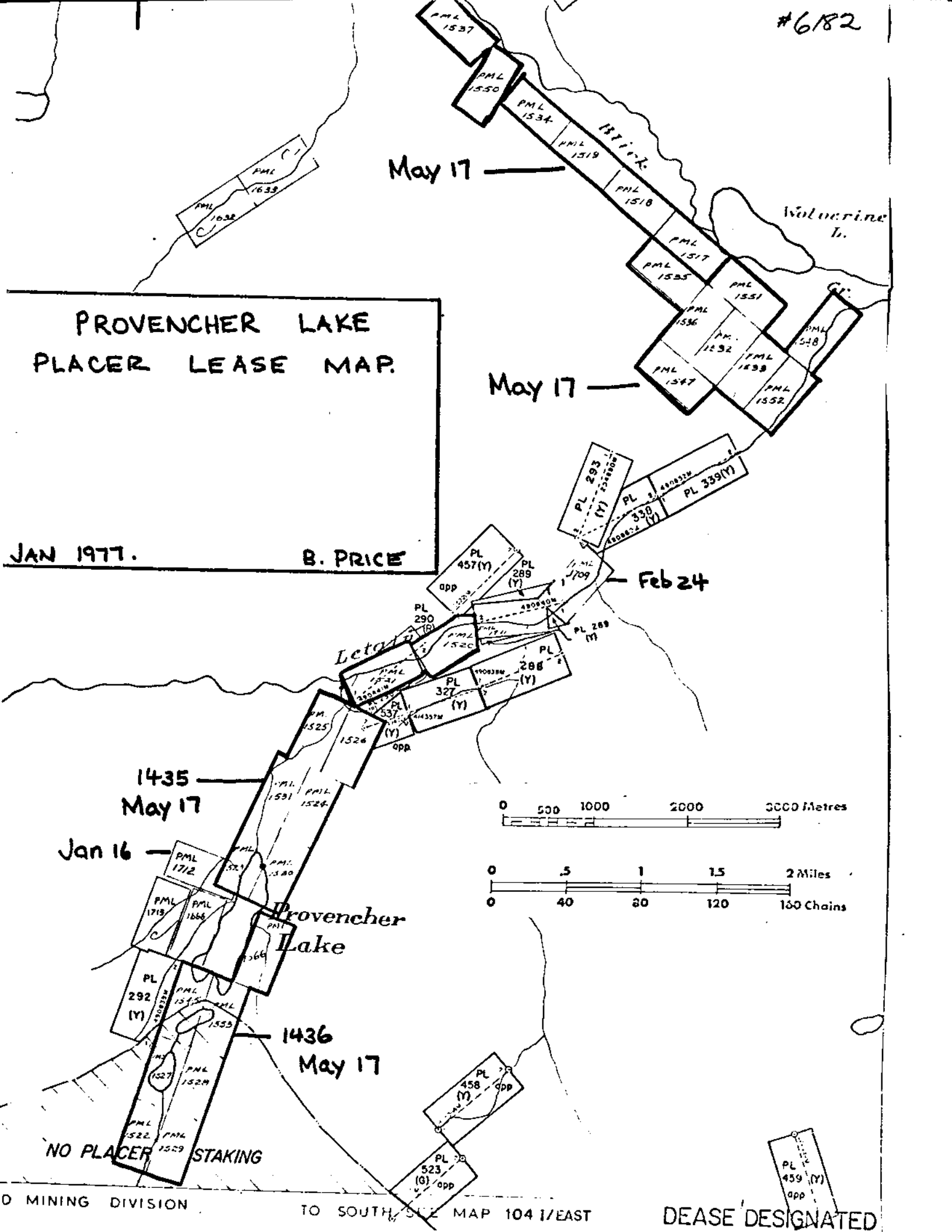
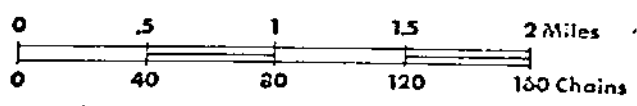
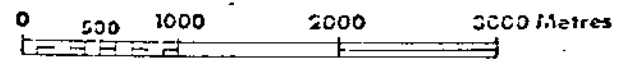
Feb 24

1435
May 17

Jan 16

1436
May 17

NO PLACER STAKING

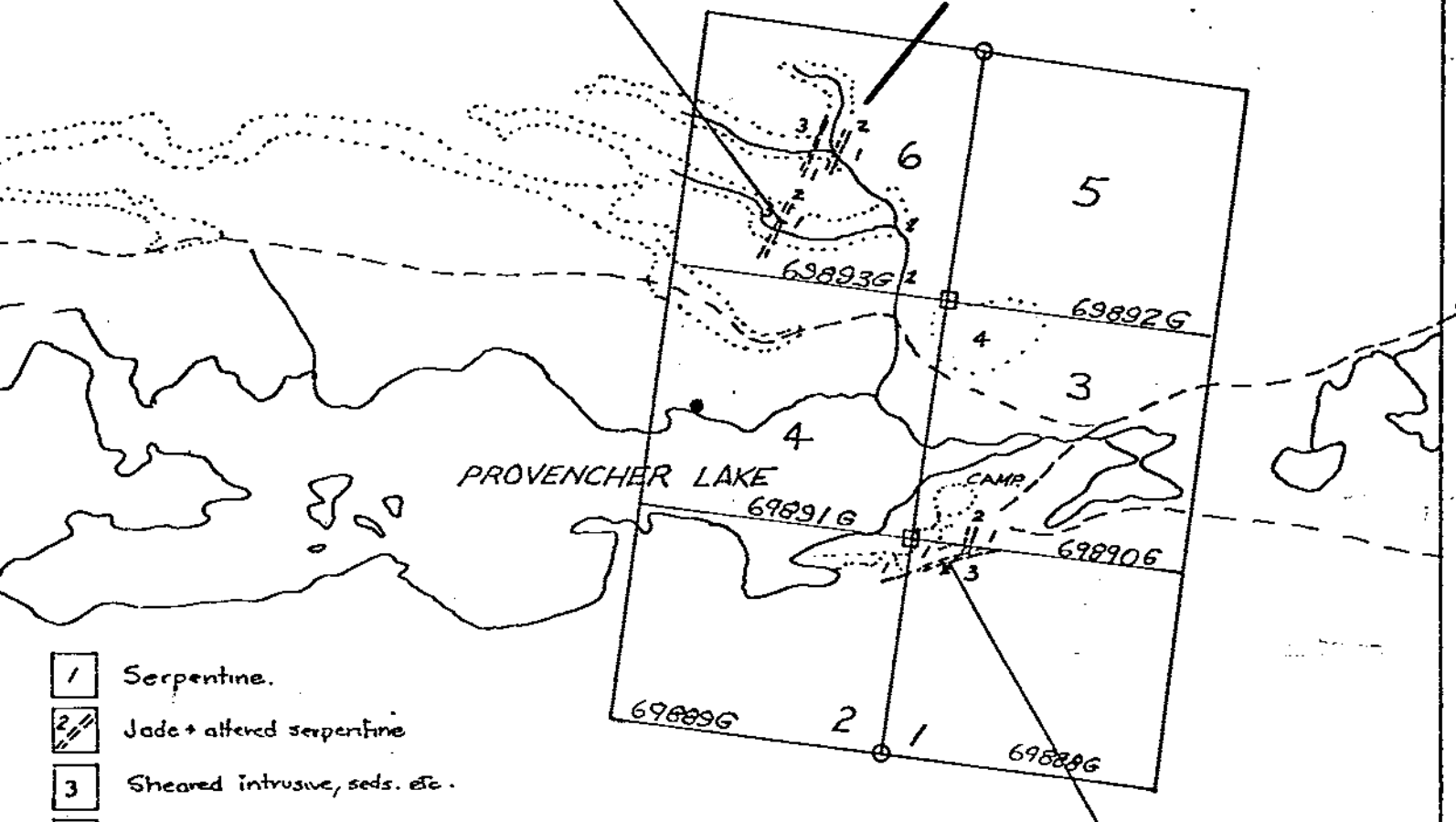


#6182

31.3ft XRPS core in
9 placer boulders.
PML 1712

"M." AREA

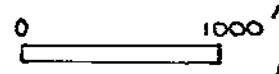
26.8ft XRPS core in
3 in-situ masses.



- 1 Serpentine.
- 2 Jade + altered serpentine
- 3 Sheared intrusive, seds. etc.
- 4 Gabbro.

NEPHRO-JADE CANADA LTD.
"JADE" CLAIMS - PROVENCHER LK., B.C.

1976 DRILLING.



Barry Price Jan 23/77
B. Price. Jan. 1976.

PROVENCHER LAKE DRILLING STATISTICS - 1976

<u>AREA</u>	<u>BOULDERS</u>	<u>FOOTAGE</u>	
A	21	63.0'	
B	10	17.6'	
E	4	13.3'	
G	1	25.3'	
I	25	115.6'	
M	9	31.3'	
O	22	44.6'	
Z	20	42.5'	
JADE CLAIMS (MH)	3	26.8'	
JW CLAIMS	25	42.0'	
TOTAL (EXPLORATION)	<u>140</u>	<u>422.0'</u>	(33%)
PRODUCTION DRILLING	3	860.2'	(67%)
TOTAL (EXPL. + PROD.)	143	1282.2'	

Barry Price.

DRILLING COSTS - PROVENCHER LAKE - 1976

A. WAGES:

<u>NAME</u>	<u>RATE</u>	<u>DATES</u>	<u>TOTAL</u>
J.GREY	\$1250/mo	July4/Aug 24	\$3217.00
G.GILLEY	\$1250/mo	July4/Aug 24	\$2821.00
M.ANFIELD	\$1575/mo	July4/Oct 1	\$6360.50
K.MAKEPEACE	\$1500/mo	July4/Oct 1	\$5458.40
W.WEHASS	\$1500/mo	Sept6/Oct 1	\$1865.40
J.TOMLINSON	\$1375/mo	July4/Aug 20	\$2543.98
P.BIALKOSKI	\$1250/mo	July4/Sept 5	\$1775.41
M.KAARREMAA	\$1500/mo	July4/Oct 4	\$3855.22
L.RAE (FOREMAN)	\$2000/mo	July4/Oct 4	\$4733.34

B.PRICE (GEOLOGIST) \$ 150/day July15/Sept1 \$2250.00

TOTAL WAGES \$34880.35

AIRCRAFT: Yukon Air Ltd.\$ 1558.00
Columbia Air Ltd.....\$ 318.75
Watson Lake Flying Service \$16969.50
\$18846.25

FUEL: Canadian Pepane\$ 293.37
Pacific Petroleum\$ 1916.04
\$ 2209.41

SUPPLIES AND EQUIPMENT:

Roys Auto\$ 109.96
Northern Metallic\$ 2247.38
Hougens\$ 790.45
G.Third +Sons\$ 1284.00
H.M.H.Enterprises\$ 368.00
Panorex Expl.Ltd\$ 478.44
Deakins Equipment\$ 1074.46
Pro Hardware\$ 157.04



Gilchrists Building Supplies	\$ 311.53
Jones Tent	\$ 955.87
Yukon Forest Products	\$ 100.00
Radio Shack	\$ 461.94

DRILLING SUPPLIES:

Wesdrill Ltd.	\$ 573.60
J.K.Smit Ltd.	\$44762.41
	<u>\$45336.01</u>

FOOD:

Thompson-Yukon Food	\$ 636.73
Campground Services	\$ 5847.40
	<u>\$ 6484.13</u>

TRAVEL + ACCOM.

Hermes travel	\$ 891.97
C.P.Air	\$ 174.36
Belvedere Hotel	\$ 2133.81
	<u>\$ 3200.14</u>

FREIGHT:

Canadian Freightways	\$ 125.43
----------------------------	-----------

COMMUNICATION:

B.C.Tel Ltd.	\$ 547.63
Dept. Communication	\$ 35.00
Spillsbury Tindall Ltd.	\$ 3625.62
	<u>\$ 4208.25</u>

Vehicle Rental Etc:

Twilight Services.....	\$ 851.66
------------------------	-----------

TOTAL: SUPPLIES,ETC.	\$89600.35
---------------------------	------------

TOTAL WAGES AND SUPPLIES ETC.	\$124480.35
------------------------------------	-------------

PORTION OF TOTAL COSTS ATTRIBUTED TO EXPLORATION

33% of total.....	\$41078.63
-------------------	------------

DRILLING COST PER FOOT (EXPLORATION)	\$97.34
--	---------

DRILLING COST PER FOOT (PRODUCTION)	\$96.97
---	---------

Barry Price

QUALIFICATIONS

NAME: Barry James Price.

BORN: Smithers, B.C., August 19, 1944.

EDUCATION:

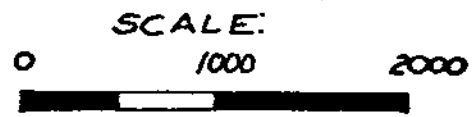
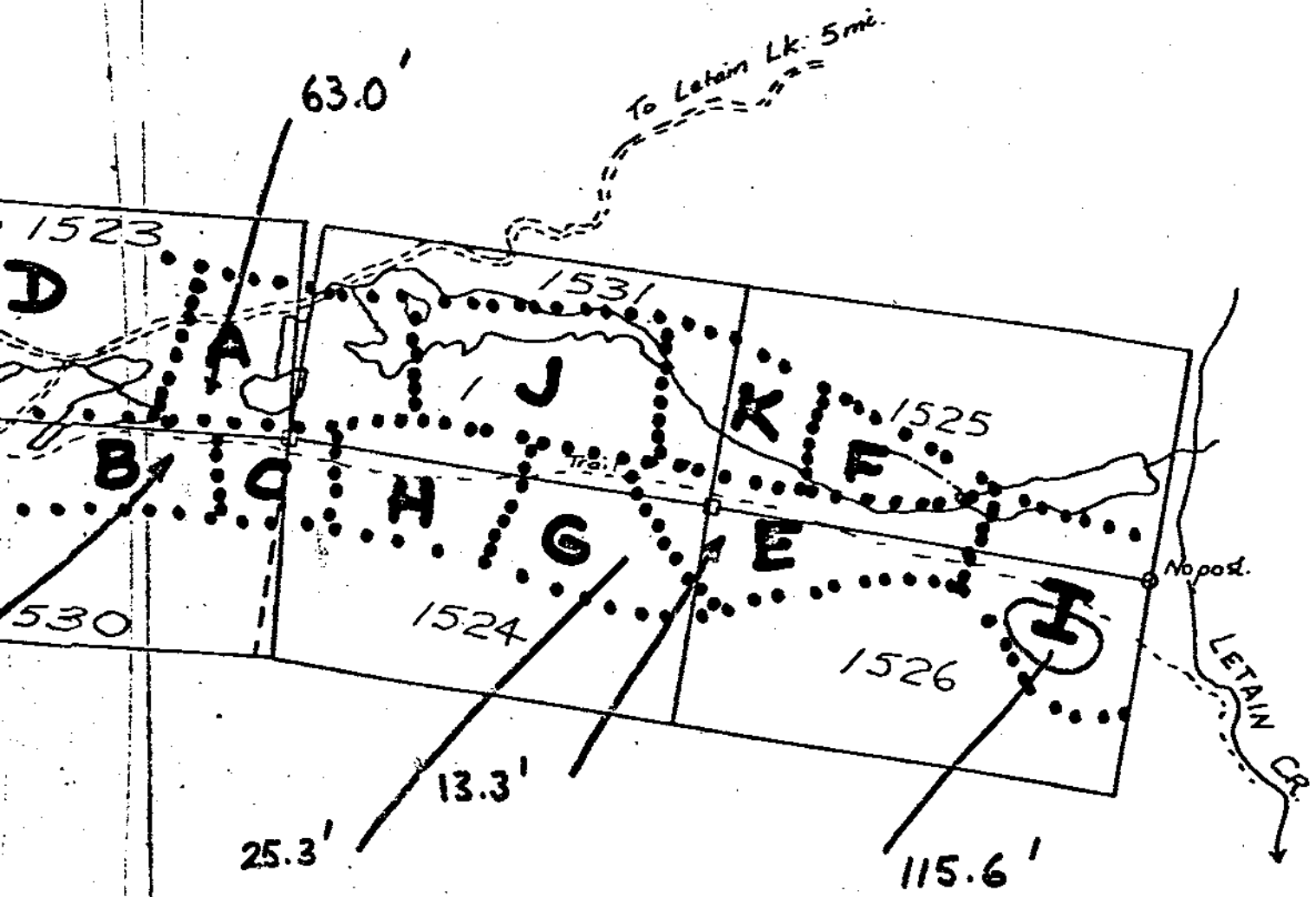
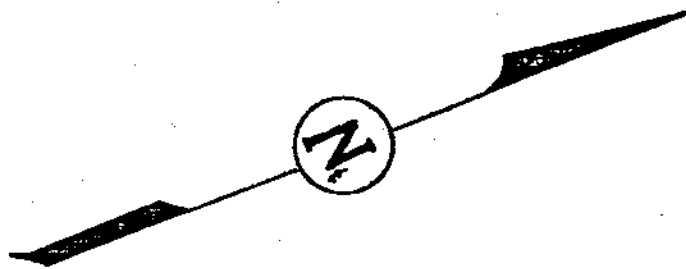
- A) High school: Smithers, B.C. Graduated 1961.
- B) University: B.Sc. Honors Geology 1965, Thesis topic:
(U.B.C.) "Tertiary Sediments at Driftwood
Creek, Smithers Map Area, B.C."
M.Sc., Geology, 1972, Thesis topic:
"Minor Elements in Pyrite and
Exploration Applications of
Minor Element Studies."

EMPLOYMENT RECORD:

- 1964, (summer): GEOLOGICAL SURVEY OF CANADA., junior assistant, mapping party in Rocky Mts., supervised by Dr. G.B.Leech.
- 1965 - 1968 CHEVRON STANDARD LTD., Alberta. Senior assistant, regional mapping party in Mackenzie and Richardson Mts. Subsurface geological studies, carbonate reef research, wellsite supervision and production department studies.
- 1968 (summer) MANEX MINING LTD. Smithers, B.C. Geological mapping and diamond-drill supervision.
- 1969 (summer) MANEX MINING LTD. Smithers, B.C. Property mapping and evaluation, geophysical and geochemical studies, supervision of diamond drilling, geological mapping for Jade Queen Mines Ltd.
- 1970 (summer) ARCHER, CATHRO AND ASSOC., Party chief, regional study of sedimentary copper potential of Mackenzie Mts. Reconnaissance mapping and geochemical interpretation.
- 1971 (summer) J.R.WOODCOCK CONSULTANTS LTD., Project geologist in charge of exploration of massive sulphide prospect, including geological mapping, geochemistry, geophysics, and diamond drilling. Concurrently supervised regional exploration program.

- 1972 - 1974 MANEX MINING LTD., Vancouver, Geologist
in charge of field projects. Consulting
geological work for New World Jade Ltd.,
and Delphi Resources Ltd.
- 1974 - 1976 Manex Mining Ltd., Geologist in charge
of field projects. Consulting geologist
for Delphi Resources Ltd., Territorial
Gold Placers Ltd., Nephro-Jade Canada Ltd.
- 1976 Petra Gem Exploration Ltd. Geological
Consulting.
- 1975 Elected Fellow, Geological Society of Canada.

#6182



NEPHRO-JADE CANADA LTD.

PLACER CLAIMS - PROVENCHER LK.
SHOWING DRILLING AREAS

1976 DRILLING AREAS.

6182

Barry Price

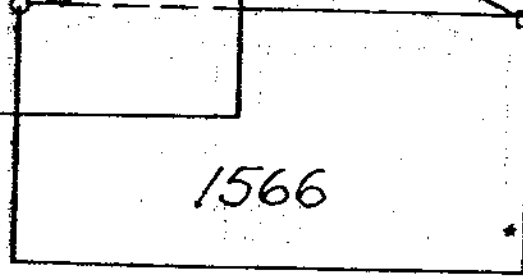
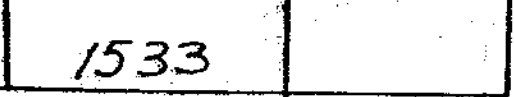
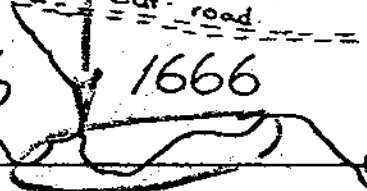
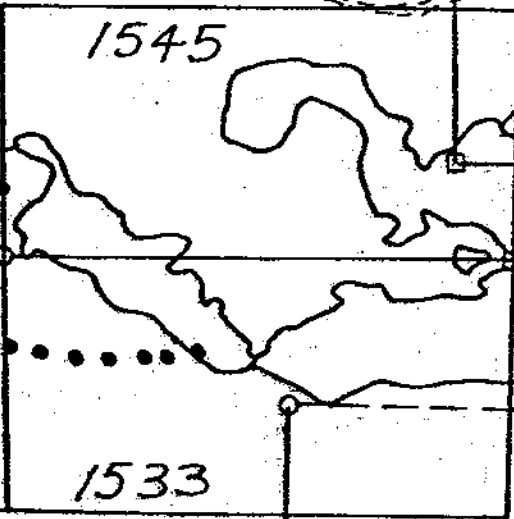
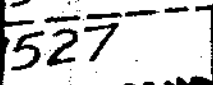
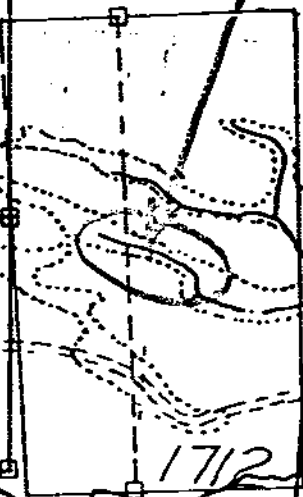
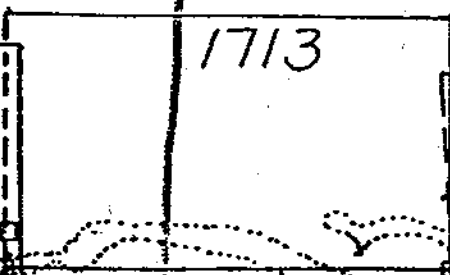
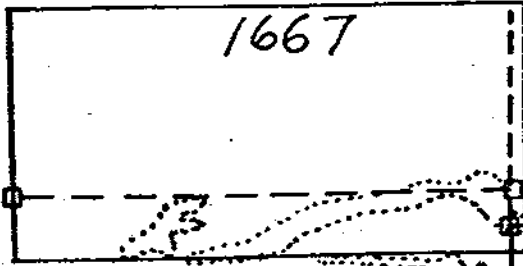
Jan 23 1977

B. PRICE, M.Sc.

APRIL 1975.

"O" area 44.6'

"M" 31.3'



PROVENCHER LAKE

WP
CAMP

17.6'

42.5'

