

6256

77-#69-#

Diamond Drilling Program

Nove 1 Claim
Record No. 130
Greenwood Mining Division
82E /9W

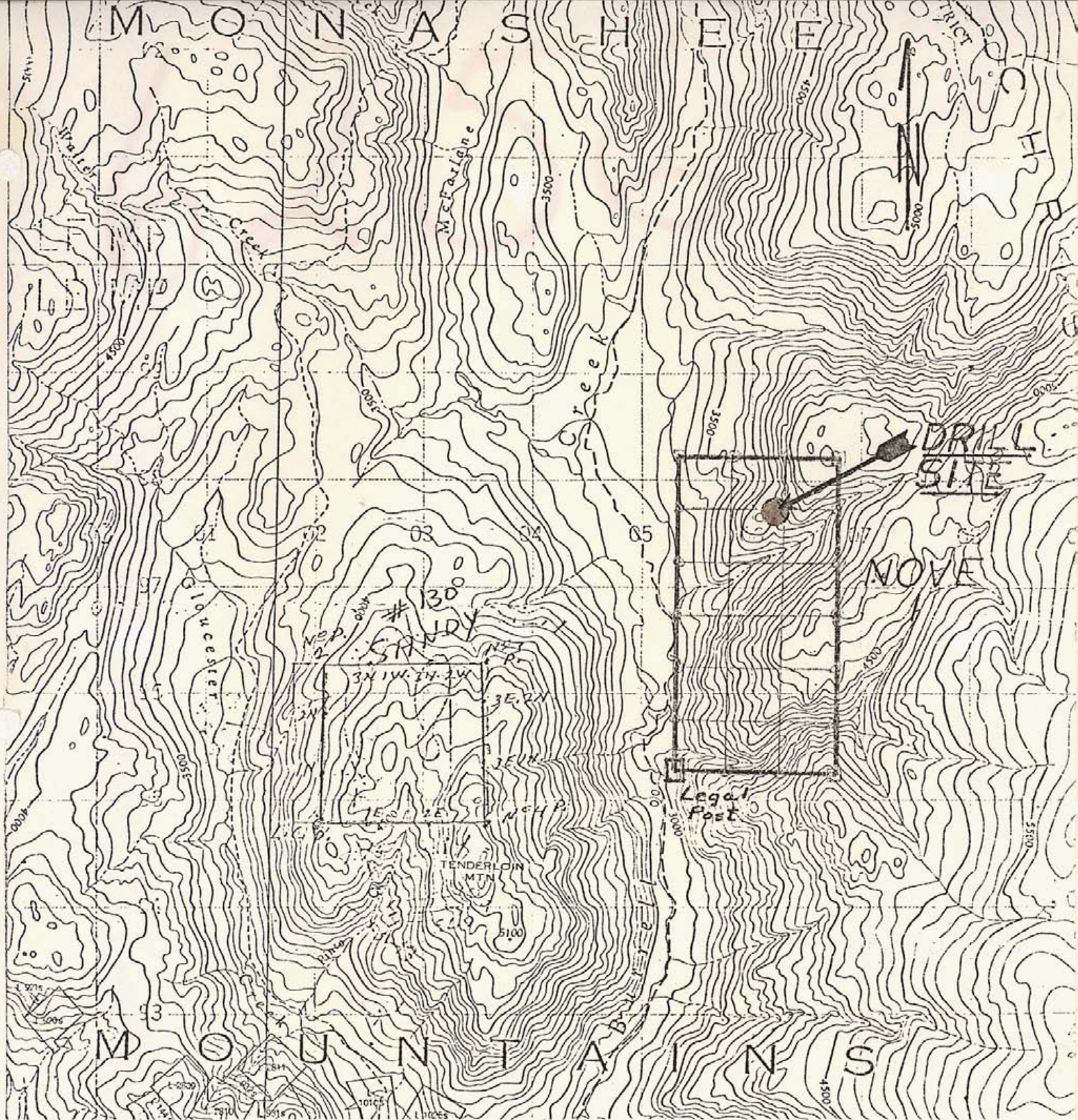
Filed as Assessment Work
on behalf of

Hesca Resources Ltd.

by

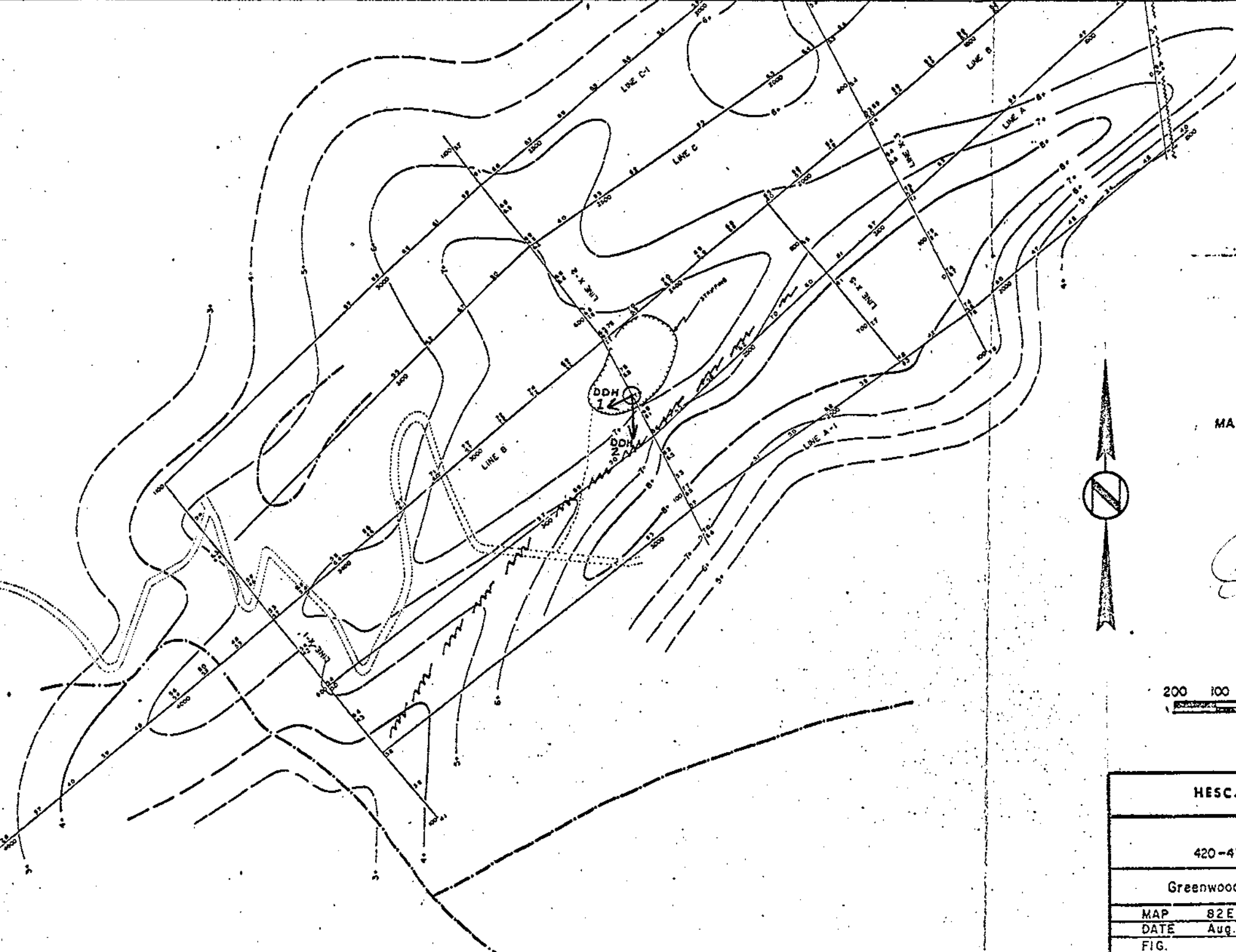
G. Gutrath, P. Eng.
Atled Exploration Management Ltd.

MINERAL RESOURCES BRANCH ASSESSMENT REPORT NO. _____
--

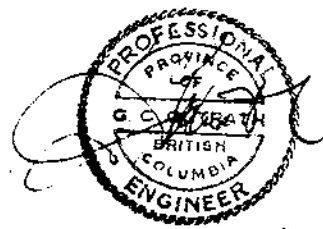


NOVE 1 Claim
 Record No. 130
 Greenwood Mining Division
 Map. No. 82E/9W
 Scale 1:50,000





MAXIMUM CHARGEABILITY CONTOURS
Contour Interval .001 Second



HESCA RESOURCES CORPORATION LTD.	
Atled Exploration Management Ltd.	
420-475 Howe st.	Vancouver, B.C.
Greenwood M.D	Franklin Area
MAP 82 E / 9 W	INDUCED POTENTIAL SURVEY
DATE Aug. 1976	
FIG.	

Diamond Drilling Program
Nove 1 Claim

Introduction

The writer outlined the drill target and drill site location for the principals of Hesca using the Induced Polarization Survey map and the existing 1:50,000 topographic map for control. The writer did not visit the property during the drilling of the two holes and as a result the holes have not been surveyed. The holes have been plotted on the enclosed map by information given to the writer by the principals of Hesca Resources Ltd. The writer has only logged one box of core from 277 feet to 308 feet that represents the last 31 feet of DDH #2. The drill log for this portion of core is enclosed.

Diamond Drilling

Two holes were drilled using a Smit JKS 300 drill equipped with BQ wire line. (diameter 2 3/8 inch).

DDH Nove 76-1
Direction (approx) S60 W
Inclination -70
Depth 101 feet
Elevation (approx.) 4050 feet

DDH Nove 76-2
Direction (approx) South
Inclination -70
Depth 308 feet
Elevation (approx.) 4050 feet

Core Storage

The core is stored at the drill site on the Nove 1 claim in wooden boxes.

One box of core is stored in Vancouver at 3636 Lakedale Ave., Burnaby, B.C.


Respectfully submitted

A circular professional seal for a British Columbia Engineer. The seal contains the text 'PROFESSIONAL ENGINEER OF BRITISH COLUMBIA' around the perimeter. In the center, there is a signature and the name 'G. G. Grath, P. Eng.'
G. G. Grath, P. Eng.

ENGINEER'S CERTIFICATE

I, GORDON C. GUTRATH, of 3636, Lakedale Avenue, in the Municipality of Burnaby, in the Province of British Columbia, DO HEREBY CERTIFY:-

1. That I am a consulting geologist with a business address of 420 - 475 Howe Street, Vancouver, B. C. V6C 2B3
2. That I am a graduate of the University of British Columbia where I obtained my B.Sc. in geological science in 1960.
3. That I am a Registered Professional Engineer in the Geological Section of the Association of Professional Engineers in the Province of British Columbia.
4. That I have practised my profession as a geologist for the past sixteen years, and
5. That I have no interest in the property with which this report is concerned, nor do I expect to receive any such interest, nor do I have any interest in *Hesca Resources Ltd.*


Gordon C. Gutrath, B.Sc., P.Eng.

DATED at the city of Vancouver, Province of British Columbia, this 7 day of March, 1977

DIA HOND DRILL LOG -- ~~2~~

COLLAR:—

LAT. _____
 DEP. _____
 ELEVATION 2050
 AZIMUTH South 2 - 70°

DIP TEST		
FOOTAGE	ANGLE	
	READING	CORRECTED

76-2
P 3

PROPERTY *NOVE 1 CLAIM*
 HOLE NO. *DDH NOVE 76-2*
 COMMENCED *OCTOBER, 1976*
 FINISHED *NOVEMBER, 1976*
 PURPOSE OF HOLE *Test I.P. Anomaly*
 LOGGED BY: *G. Gutrath*

N.M.P.

FOOTAGE	DESCRIPTION	CORE SAMPLES						
		SAMPLE NO.	FROM	TO	WIDTH	ASSAY	WIDTH X ASSAY	SAMPLE NO.
0 - 277	Not logged							
77 - 286	Andesite dike (?) : dark grey-black colour, fine grained, uniform texture except near contact where it becomes finer grained and darker coloured. Scattered coarser grained black mafics (10%) in finer grained ground mass. Core cut by a few, random 1/8" to 1/4" calcite veinlets sub-parallel to direction of core. Contact between andesite and intrusive is weakly sheared over 1/2 inch at 55° to core. Pyrite less than 1/2%, Magnetite + 1% to 3%							
86 - 308	Granitic intrusive: (possible Cornell) From 286 to 294 the contact zone is weakly sheared and altered and has dark patches of what appears to be inclusions of the dike rock in							

DIA 'OND DRILL LOG ~~76-2~~ 76-2

COLLAR:—

LAT.
 DEP.
 ELEVATION
 AZIMUTH

DIP TEST		
FOOTAGE	ANGLE	
	READING	CORRECTED

76-2
P 4

PROPERTY
 HOLE NO. DDH NovC 76-2
 COMMENCED
 FINISHED
 PURPOSE OF HOLE
 LOGGED BY:

N.M.P.

FOOTAGE	DESCRIPTION	CORE SAMPLES						
		SAMPLE NO.	FROM	TO	WIDTH	ASSAY	WIDTH X ASSAY	SAMPLE NO.
	<p><i>The lighter coloured intrusive. The granitic intrusive is a light grey to pinkish grey colour carry 15% to 20% chloritized mafics. The intrusive has a 'patchy' appearance and has possibly been brecciated or highly fractured and then feldspathized masking the original intrusive textures and 'healing' the fractures. 297' - 300' $\frac{1}{2}$" wide shear sub paralleling core.</i></p> <p><i>Finely disseminated specular hematite, pyrite, minor chalcocite(?) increasing with depth. Hematite 2% Pyrite 1% Chalcocite Trace.</i></p> <p style="text-align: center;"><i>- End -</i></p>							

DOMINION OF CANADA:
PROVINCE OF BRITISH COLUMBIA.
To Wit:

In the Matter of

Costs incurred in carrying out a diamond drilling program on Nove 1 Claim, Greenwood Mining Division.

I, Gordon C. Gutrath

of 1024 - 355 Burrard Street, Vancouver, B. C.

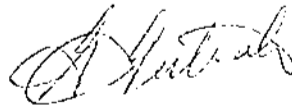
in the Province of British Columbia, do solemnly declare that

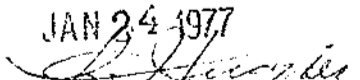
the following costs were incurred in carrying out a diamond drilling program on the Nove 1 Claim, Greenwood Mining Division:

1. 75% of J. K. Smith & Sons Diamond Drilling Products - Invoices No. 5-11-75, 70-11-75, 75-11-76, 93-11-76 and 206-10-76 = \$5,974.29 x 75% =	\$ 4,480.72
2. Mobilization & Demobilization - E. Mueller	1,110.92
- A. Still	460.00
3. Transportation - truck rental	658.05
4. Driller, assistant & expenses	2,257.49
5. G. Gutrath, geologist	<u>1,000.00</u>
	<u>\$ 9,967.18</u>

And I make this solemn declaration conscientiously believing it to be true, and knowing that it is of the same force and effect as if made under oath and by virtue of the "Canada Evidence Act."

Declared before me at the
of _____, in the
Province of British Columbia, this
VANCOUVER, B. C.
day of _____, A.D.



JAN 24 1977

Sub-Mining Recorder

A Commissioner for taking Affidavits for British Columbia or
A Notary Public in and for the Province of British Columbia.