

6266

ONTARIO MINING DIVISION

MNDAC

Map # 93K/5E

Area #1 Mineral Claim

Star Brooks

MINERAL RESOURCES BRANCH  
ASSESSMENT REPORT

NO. \_\_\_\_\_

TABLE of CONTENTS

1. Index map
2. Description of work done
3. Cost
4. Grid map

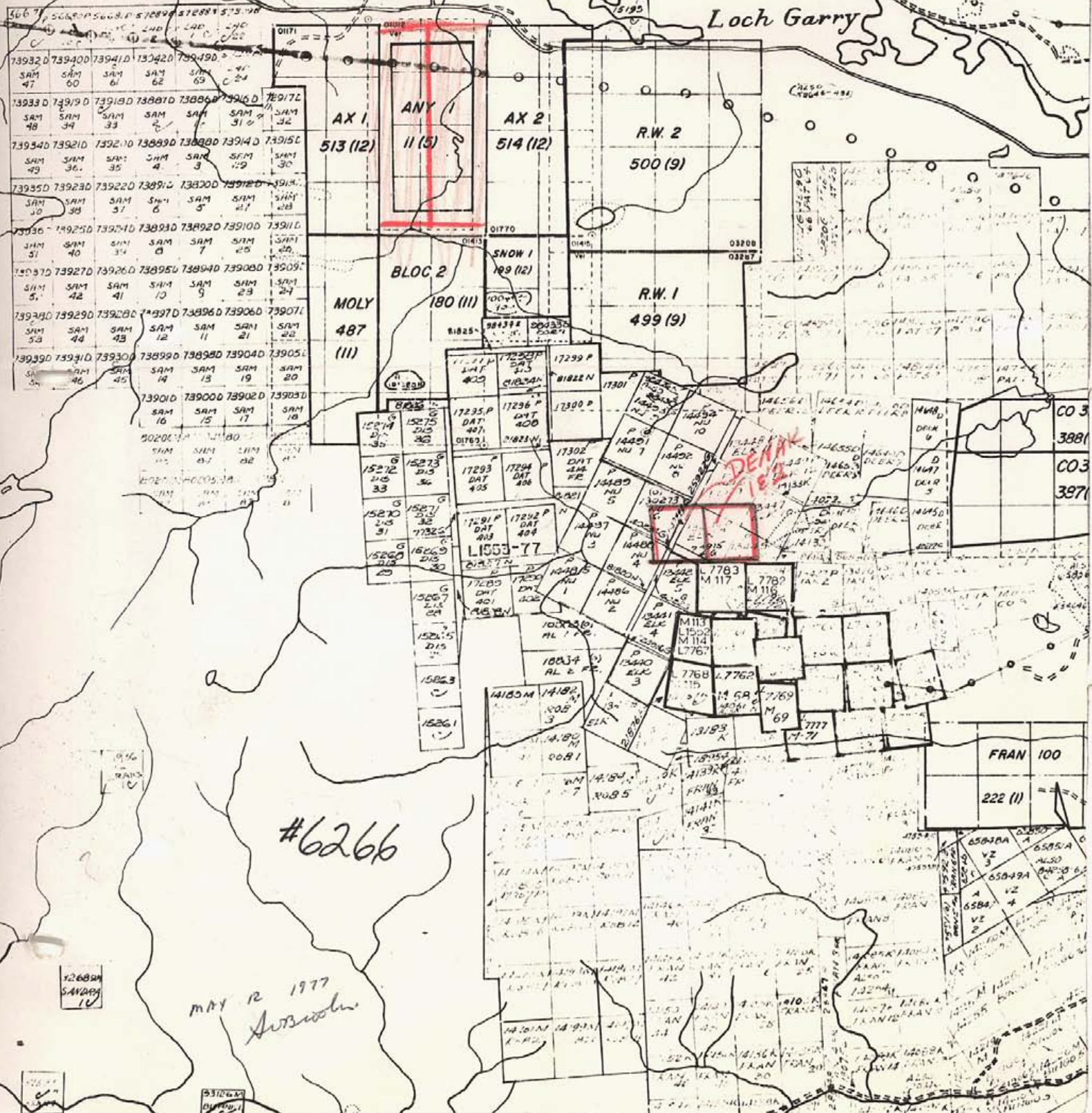
Cheskwa Cr

234 53  
23634

CANADIAN NATIONAL RAILWAYS  
Savory

Savory L.

Loch Garry



#6266

MAY 12 1977  
Subsidiary

FRAN 100  
222 (1)

22689  
SAVORY

93764

Access to the any #1 mineral claim is by 4-wheel drive from Highway #16, 5 miles west of Endako.

Work commenced May 4, 1977. Work was completed May 12, 1977.

The base line commences at a point 1,000 meters due west of Oval Lake. Line 00 extends west from this point 1,000 meters to station 00 & 10 west. From station 00 & 5 west a base line extends north 1,800 meters to station 18 north & 5 west. A third base line extends 500 meters east and 500 meters west. This is line 18 north. These lines are cut out with a power saw.

Station interval on base line is 100 meters.

From base line 00, blaze lines at 100 meter intervals extend <sup>to</sup> north 1,800 meters to tie in with line 18 north. The blaze lines have 100 meter intervals.

*J. J. J.*

MAY 12 1977

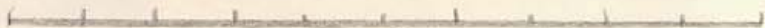
COSTS

Two men employed May 4,5,7,8,11.

10 man days @ \$75.00 .....	\$ 750.00
Transportation ( 4x4 800 miles).....	80.00
Power Saw Gas .....	6.00
Mix oil .....	4.80
Chain oil .....	4.60
Camp Supplies ( food, etc.) .....	82.00
Compiling Report .....	<u>25.00</u>
	\$952.40

*Storwood.*  
MAY 12 1977

1 KILOMETER



1 CM = 100 METERS



BASE LINE 1: 10,000



BLAZE LINE

100 METER STATION INTERVAL



10W  
18N

5W  
18N

00  
18N

AX # 1

ANY # 1

AX # 2

10W  
00

5W  
00

00  
00

ANY # 2 FRACTION

ANY # 1 FRACTION

#6266

MOLY

BLOC # 2

SNOW # 1

MAY 12 1977

*Subs...*