

6272

77-#157-#6272

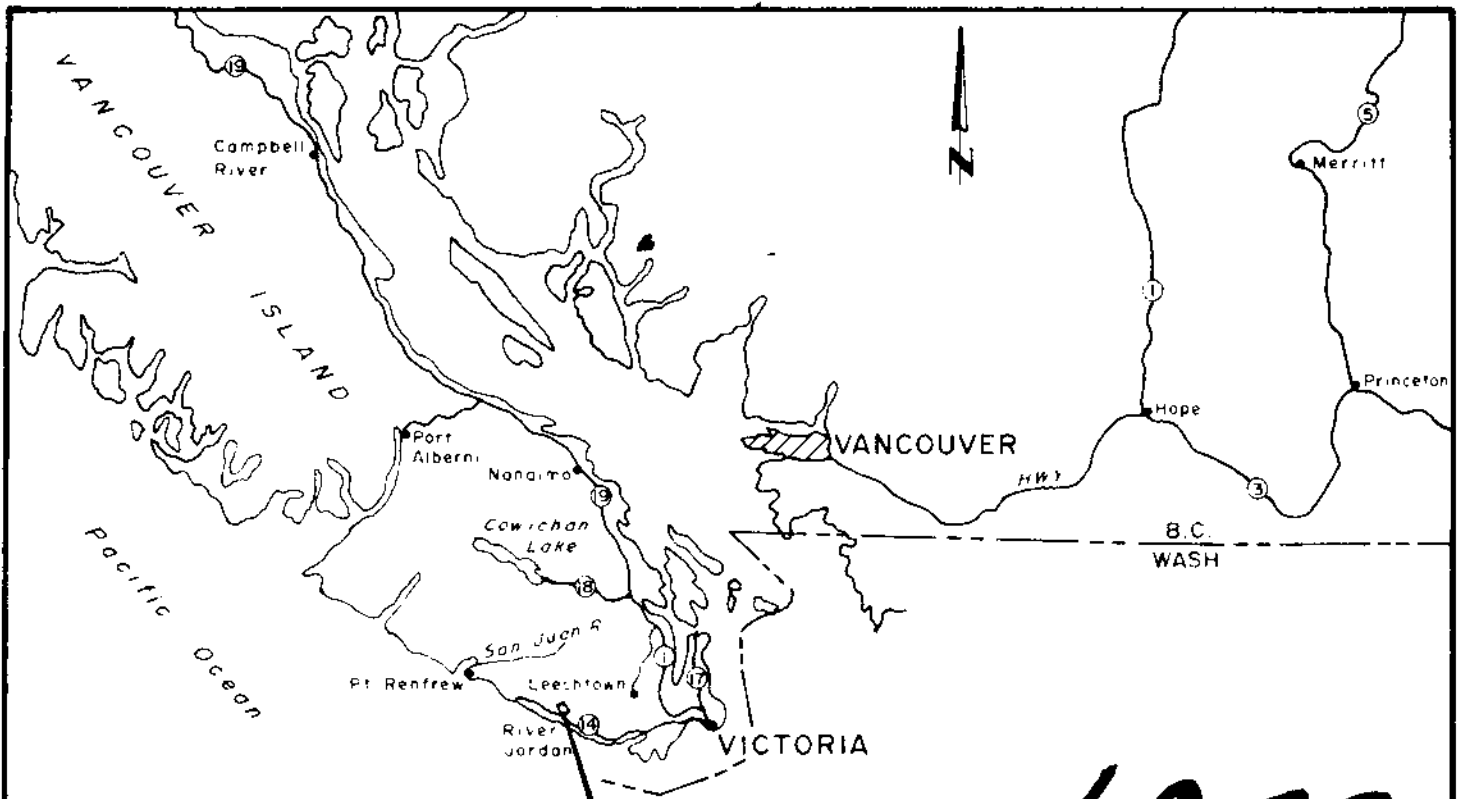
GEOCHEMICAL REPORT
CHATHAM RESOURCES LTD.

Wolf claims, Jordan River area, Vancouver
Island, B.C., Victoria Mining Division
Lat. 48°27'N Long. 124°07'W N.T.S. 92 C/8

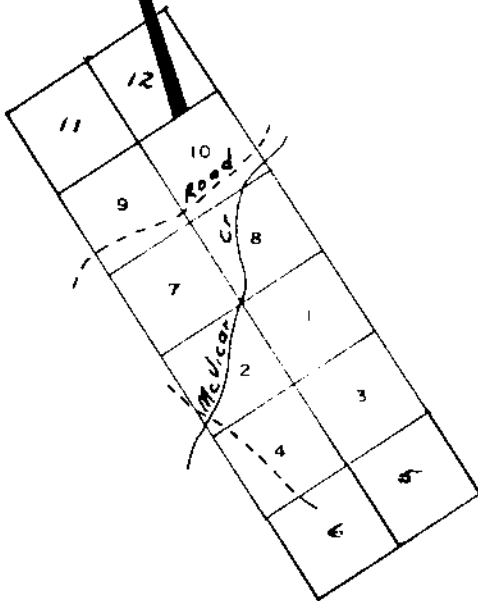
AUTHOR: Glen E. White B.Sc., P. Eng.
DATE OF WORK: April 16, 18, 1977
DATE OF REPORT: May 16, 1977

MINERAL RESOURCES BRANCH
ASSESSMENT REPORT

NO. _____



6272



CHATHAM RESOURCES LTD.
 WOLF CLAIMS
 - LOCATION & CLAIM MAP -

Glen & White
 geophysical consultants
 Vancouver, B.C.

Scale 1" = 40 Miles

APRIL 29, 1977
 Fig. 1

C O N T E N T S

	<u>PAGE</u>
Introduction.....	1
Property.....	1
Location and Access.....	1
General Geology.....	2
Survey Specifications	
(1) Survey Grid.....	3
(2) Geochemical Survey.....	3
Discussion of Results.....	4
Conclusion and Recommendations.....	5
Statement of Qualifications.....	6
Cost Breakdown.....	7

Illustrations

Figure 1 - Location and Claims Map

#1 Figure 2 - Geochemical Map - Copper p.p.m.

Figures 2A, 3A, 4A - 1972 exploration data

INTRODUCTION

During the period April 16 - 18, 1977, a program of detail geochemical soil sampling was conducted over a portion of the Wolf claims, Jordan River area, Victoria Mining Division, by Glen E. White Geophysical Consulting & Services Ltd. on behalf of Chatham Resources Ltd.

The survey was conducted over an area of magnetic high and low trends with associated VLF EM conductors as illustrated on Figures 2A and 3A. Figure 4A shows the reconnaissance copper geochemical data.

PROPERTY

The property consists of the Wolf 1 - 12 mineral claims as illustrated on Figure 1. The survey was conducted within the boundaries of mineral claims

Wolf 1, 2, 7 and 8.

LOCATION AND ACCESS

The Wolf claims are located some 48 miles west of Victoria near the logging community of Jordan River B.C.

Access to the Wolf claims is via an old logging road some 3 - 4 miles along the Jordan River - Port Renfrew road and then right on the first road approximately one mile off the main highway.

The southern tip of Vancouver Island is underlain by an extensive assemblage of volcanic and marine sediments known as the Metchosin Formation of Eocene Age. The Metchosin series consists of a variable succession of interbedded lithologies - basalt, diabase, including porphyritic varieties, pillow lavas, flow breccias and both fine and coarse bedded tuffs and agglomerates which strike in a general direction of $N60^{\circ}$ to 70° west and dip 15° to 30° northeastward. Large stock and sill-like masses of gabbro intrude the Metchosin series throughout the Sooke-Jordan River area. Irregular intrusions of granitic material, hornblende granite, feldspar porphyry and diorite are believed to represent differentiates of the Sooke gabbro.

Copper mineralization in the area may possibly be genetically related to the gabbro but occurs in shear



zones in hornblendized basalt along the contacts with the gabbro.

Glen E. White

GEOPHYSICAL CONSULTING & SERVICES LTD.

SURVEY SPECIFICATIONS

Survey Grid

The old survey grid completed in 1972 was located and re-established in the present survey area. Lines were cut in a NE - SW direction every 200 feet and numbered at 100 foot intervals. Some 16,000 feet of survey grid was established. Soil samples were obtained at 50 foot intervals along the lines.

Geochemical Survey

Soil samples of the upper "B" horizon were taken along the traverse lines at 50 foot intervals. The soil samples were then placed in soil envelopes provided by Chemex Labs Ltd. of North Vancouver, B.C. The samples were delivered to the above lab where -80 mesh sieving, digestion by hot perchloricnitric acid and analysis by atomic absorption were carried out under the supervision of professional geochemists. 327 samples were obtained and analysed for p.p.m. copper.

Glen E. White

GEOPHYSICAL CONSULTING & SERVICES LTD.

DISCUSSION OF RESULTS

Figure 2 illustrates the copper geochemical data in p.p.m. Figures 2A - 4A show the 1972 magnetic, VLF and copper geochemical data obtained by the River Jordan Syndicate. Several small copper showings are evident around line 48E - 4N along the creek. These appear to be flanking a NW - SE trending magnetic high. Figure 3A, the VLF electromagnetometer data, shows minor conductor trends also trending NW - SE which would appear to be associated with areas of low magnetic intensity.

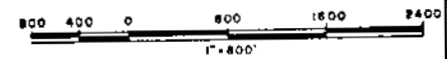
The present detail soil sampling survey located a geochemical high of 335 p.p.m. copper above a background of some 35 p.p.m. copper. Several other values over 100 p.p.m. were also detected. The geochemical data in general shows a NW - SE trend parallel to the VLF conductors and low magnetic zones. The magnetic and VLF trends continue northwestward into an area of weakly anomalous regional geochemical values which were taken at 200 foot intervals. Thus, the 335 p.p.m. geochemical anomaly should be examined for any continuation to the northwest.

6272



NOTE
Multiply all contour values by 100

MAGNETIC KEY



RIVER JORDAN SYNDICATE	
LOSS & WOLF CLAIMS	
VICTORIA MINING DIVISION - BRITISH COLUMBIA	
GEOPHYSICAL MAP	
VERTICAL MAGNETIC INTENSITY (Gammas)	
BY: ALAN B. WHITE Geophysicist	INTERPRETED BY: B.E.W. DRAWN BY: CHECKED BY: DATE: JAN. 5, 1973
BY: DONALD E. PARENT Geophysicist	DATE:

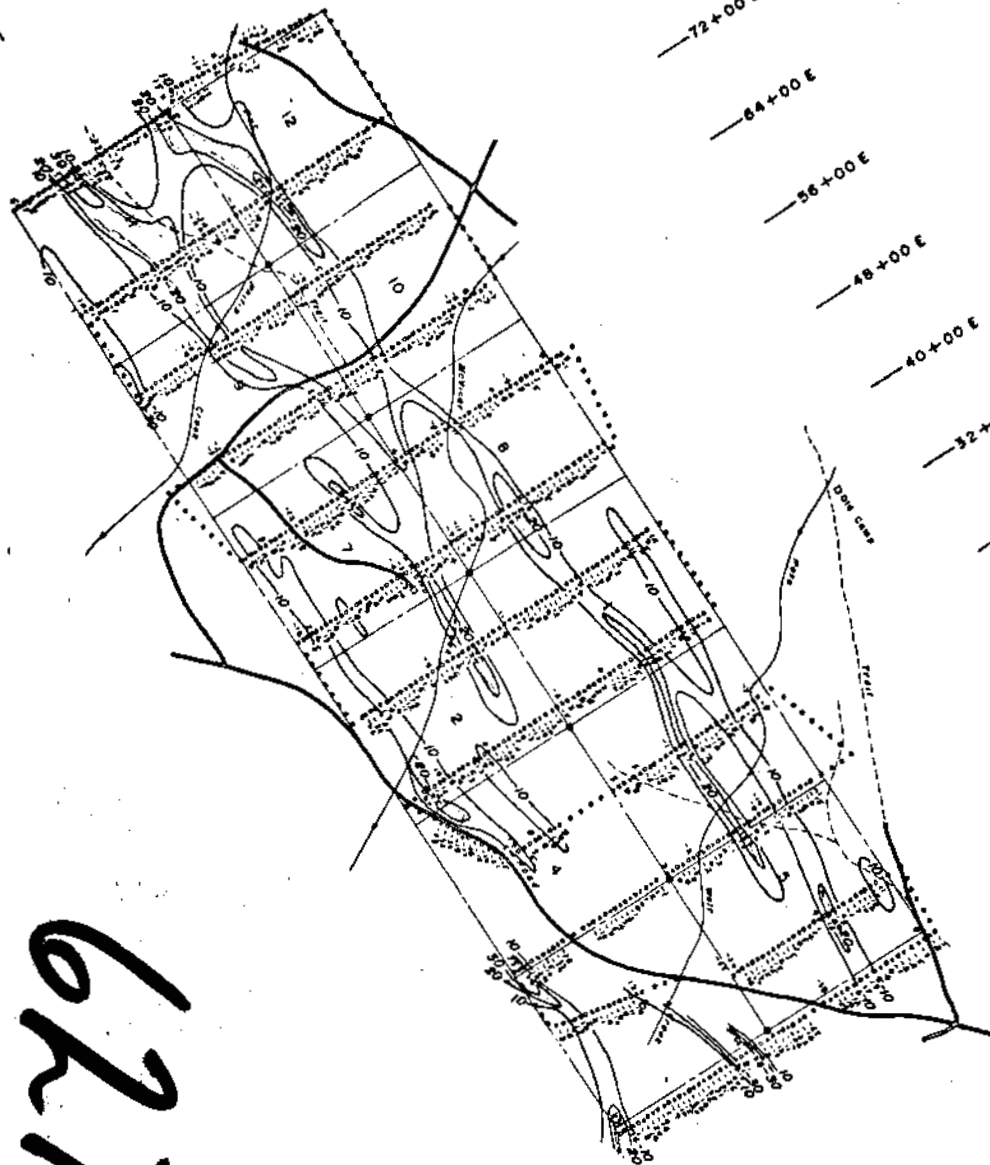
To Accompany the Geophysical Report on
 THE LOSS & WOLF CLAIMS
 DATE: 1972
 BY: ALAN B. WHITE
 & DONALD E. PARENT
 GEOPHYSICIST
 & ENG.



48°27'

124°07'

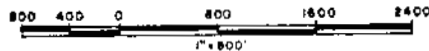
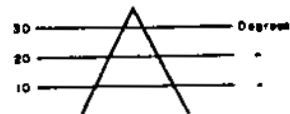
124°07'



62772

INSTRUMENT - RONKA EM-16

DIP ANGLE KEY



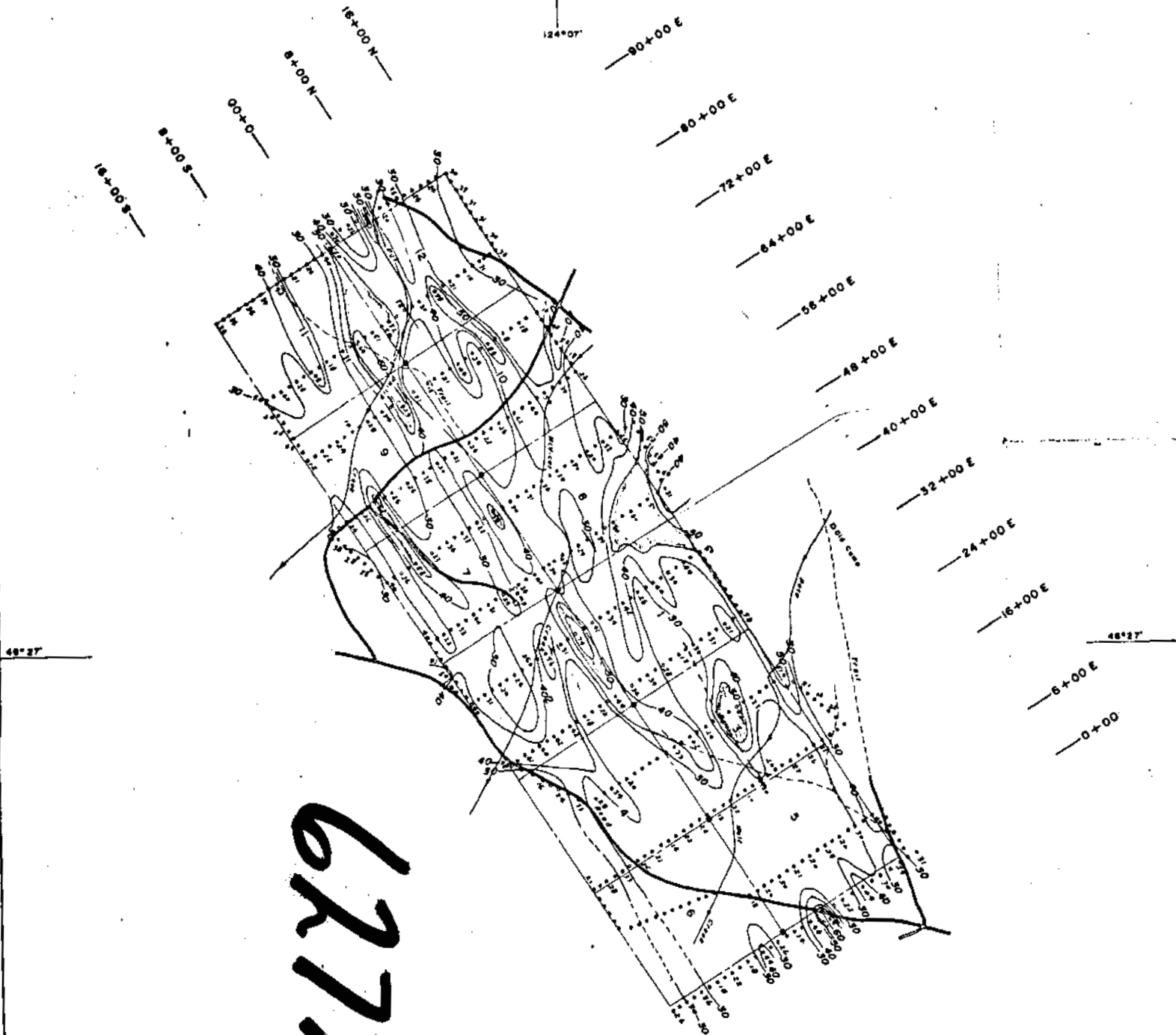
RIVER JORDAN SYNDICATE
LOSS & WOLF CLAIMS
VICTORIA MINING DIVISION - BRITISH COLUMBIA
GEOPHYSICAL MAP
ELECTROMAGNETOMETER - FILTERED DIP ANGLE
(Degrees)

OLEK E. WHITE
Geophysicist
DOUG PARENT

INTERPRETED BY: O.E.W.
DRAWN BY:
CHECKED BY:
DATE: JAN 9, 1975

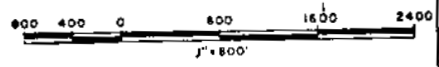
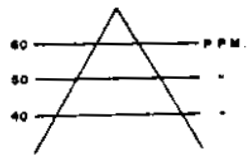
To Accompany Geological Survey of Canada Report on
THE LOSS & WOLF CLAIMS
Date: *March 1975*
By OLEK E. WHITE, Geophysicist





6272

COPPER KEY



RIVER JORDAN SYNDICATE	
LOSS & WOLF CLAIMS	
VICTORIA MINING DIVISION - BRITISH COLUMBIA	
GEOCHEMICAL MAP	
COPPER P.P.M.	
GLEN E WHITE Geophysicist	INTERPRETED BY: G.E.W. DRAWN BY:
DOUG PARSONS P. ENGINEER	CHECKED BY: DATE: JAN 5, 1973 FIG. NO. 4A

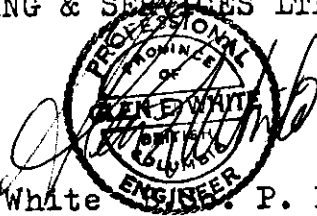
To accompany the Geophysical Report on
 The Loss & Wolf Claims
 Date: *Jan 5, 1973*
 By: GLEN E. WHITE - GEOPHYSICIST
 & DOUG PARSONS - P. ENG.

CONCLUSION AND RECOMMENDATIONS

A limited program of detail soil sampling was conducted in the central portion of the Wolf claims, Jordan River area, Vancouver Island, on behalf of Chatham Resources Ltd. The survey delineated a narrow NW trending anomalous geochemical zone which gave a high of 335 p.p.m. copper above a background of some 35 p.p.m. This anomaly is coincident with a zone of low magnetic intensity and a weak NW trending VLF electromagnetic conductor. Thus, it is recommended that this anomaly be further examined for any continuation to the NW.

Respectfully submitted,

GLEN E. WHITE GEOPHYSICAL
CONSULTING & SERVICES LTD.



Glen E. White P. Eng.

STATEMENT OF QUALIFICATIONS

Name: WHITE, Glen E.

Profession: Geophysicist

Education: B.Sc. Geophysics - Geology
University of British Columbia

Professional Associations: Associate member of Society of
Exploration Geophysicists.

Vice-President of B. C. Society of
Mining Geophysicists.

Experience: Pre-Graduate experience in Geology-
Geochemistry - Geophysics with Anaconda
American Brass.

Two years Mining Geophysicist with
Sulmac Explorations Ltd. and Airborne
Geophysics with Spartan Air Services Ltd.

One year Mining Geophysicist and Technical
Sales Manager in the Pacific north-west
for W. P. McGill and Associates.

Two years Mining Geophysicist and supervisor
Airborne and Ground Geophysical Divisions
with Geo-X Surveys Ltd.

Two years Chief Geophysicist Tri-Con
Exploration Surveys Ltd.

Six years Consulting Geophysicist.

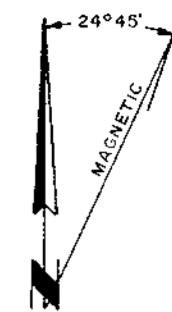
Active Experience in all Geologic provinces
of Canada.

COST BREAKDOWN

<u>Personnel</u>	<u>Date</u>	<u>Wages</u>	<u>Total</u>
D. Berryman....	April 17-18/77....	\$85/day....	\$255.00
K. Jones.....	".....	.80/day....	240.00
L. Durkin.....	".....	.75/day....	225.00
V. Guinet.....	".....	.65/day....	195.00
Materials.....			19.00
Meals and Accomodations.....			300.00
Vehicle plus Gas.....			80.00
Geochemical Analysis.....			523.00
Maps and Reports.....			350.00
Total.....			<u>\$2187.00</u>



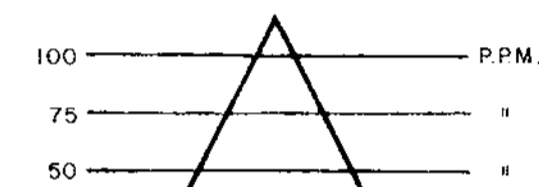
124°07'



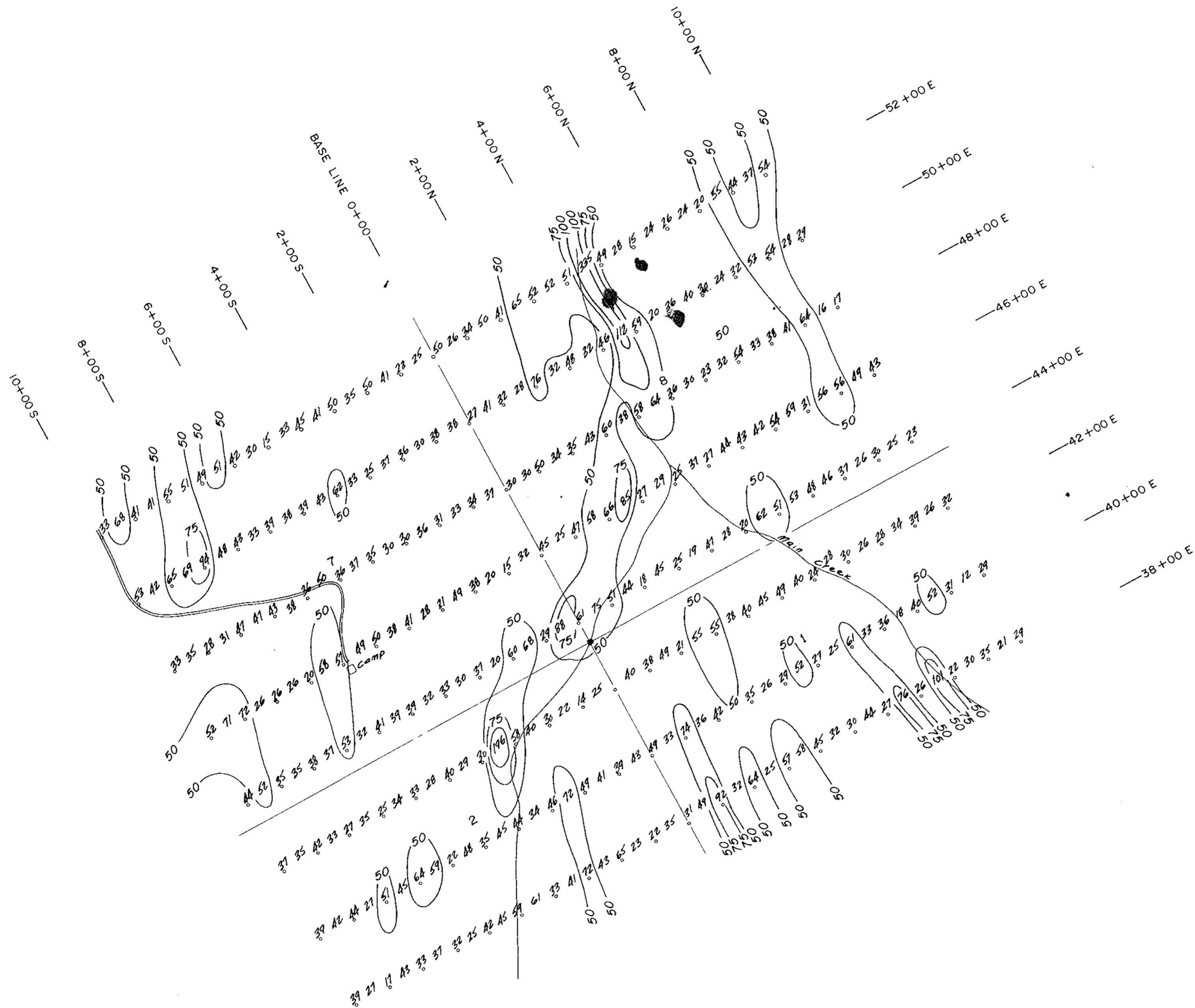
LEGEND

- Contour Line, Contour Interval 50,75,100 P.P.M.
- Stations
- Outline of Claims
- Claim Posts
- Unpaved Roads

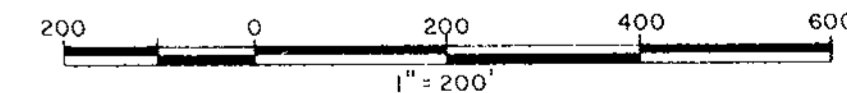
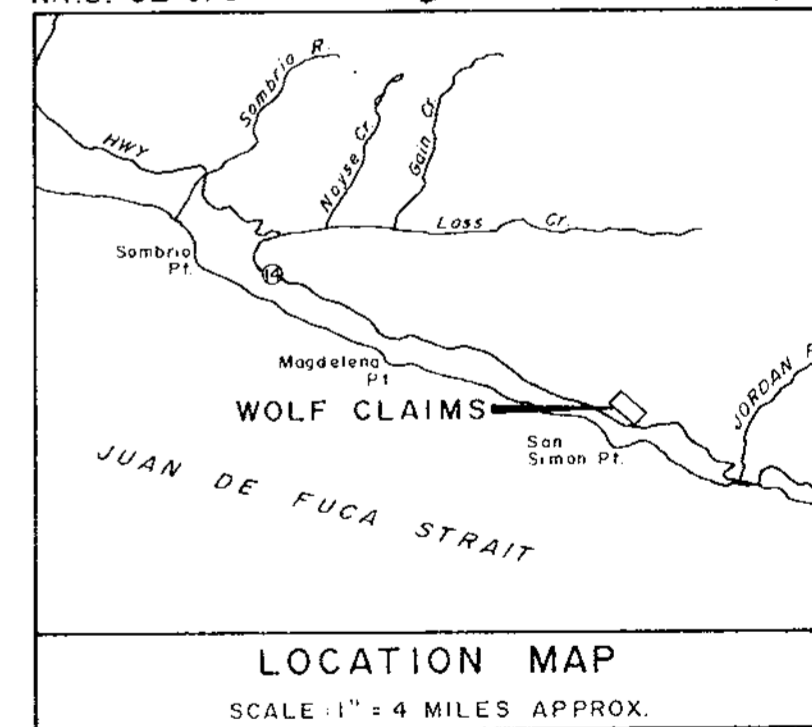
COPPER KEY



6272
M-1



N.T.S. 92 C/8



CHATHAM RESOURCES LTD.

WOLF CLAIMS

VICTORIA MINING DIVISION - BRITISH COLUMBIA

GEOCHEMICAL MAP

COPPER P.P.M.

Glen E. White
geophysical consulting
resources Ltd.

INTERPRETED BY: G.E.W.
DRAWN BY: T.M.
CHECKED BY:
DATE: APRIL 29, 1977
FIG. No.: 2

To Accompany Geophysical Report
THE WOLF CLAIMS
Date: May 16, 1977
By: GLEN E. WHITE
GEOPHYSICIST

48°27'