

# 6273

DRILL REPORT

KUTCHO DDH 51, 53, 54

GROUP II, JEFF CLAIMS

NTS 104 I 1W/2E

LIARD MINING DIVISION

by

Dane A. Bridge

Imperial Oil Limited  
Minerals Section  
314-1281 W. Georgia Street  
Vancouver, B.C.

MINERAL RESOURCES BRANCH  
ASSESSMENT REPORT

NO. \_\_\_\_\_

April 1977

TABLE OF CONTENTS

AFFIDAVIT ON APPLICATION TO  
RECORD WORK

DIAMOND DRILL CORE LOGS

COST STATEMENT

STATEMENT OF QUALIFICATIONS

COPY OF DRILL CONTRACT

MAPS:

Location Map of Jeff Claims

1:25,000

Claim Map

1 mile = 1.2 inches

Location Map of Drill Holes

1 inch = 400 feet

DIAMOND DRILL CORE LOG

PROPERTY:	Kutchu Creek	LOCATION:	34W, 12N
DRILL HOLE NO:	51	CLAIM:	Jeff 5 (70306)
AZIMUTH:	180°	CORE SIZE:	BQ
INCLINATION:	-60°	CONTRACTOR:	Arctic Diamond Drilling
LENGTH:	625'	CORE STORAGE:	Imperial Oil Camp
ELEVATION:	5160'		

DESCRIPTION

FROM	TO	
0	10	Overburden
10	304.5	Metagabbro; dark gray, medium-grained metagabbro with minor epidote and local feldspathic zones.
304.5	309.5	Rhyolite tuff; white, hard, very siliceous rhyolite tuff with minor visible fragments.
309.5	315.0	Qz. feld. porphyry; finer-grained equivalent of unit from 321.5 to 442.0.
315.	321.5	Qz. feld. porphyry; with small siliceous fragments.
321.5	442.	Qz. feld. porphyry; 30 to 50%, 1 cm qz. phenocrysts and 10%, 4 mm feld. phenocrysts in a qz-sericite schist matrix, rare pyrite.
442.	451.5	Rhyolite tuff and tuff breccia; mixed unit with some sericite and sericite-chlorite schist.
451.5	474.8	Sericite schist; with 1-3 mm qz. phenocrysts.
474.8	476.5	Rhyolite tuff.
476.5	488.5	Sericite schist; with 1-3 mm qz. phenocrysts, minor fragments and carbonate alteration.
488.5	505.5	Sericite schist; fine-grained, fissile, qz-sericite-carbonate schist with relict fragments.
505.5	509.2	Massive pyrite.
509.2	526.	Sericite schist; with minor to heavy disseminated pyrite, minor chalcopyrite.
526.	528.5	Massive pyrite.
528.5	543.	Sericite schist.
543.	568.	Sericite-chlorite schist; with Mg chlorite.
568.	625.	Sericite schist.

*D. Bridg*

DIAMOND DRILL CORE LOG

PROPERTY:	Kutchok Creek	LOCATION:	32W, 12N
DRILL HOLE NO:	53	CLAIM:	Jeff 6 (70306)
AZIMUTH:	180°	CORE SIZE:	BQ
INCLINATION:	-60°	CONTRACTOR:	Arctic Diamond Drilling
LENGTH:	677.5'	CORE STORAGE:	Imperial Oil Camp
ELEVATION:	5160'		

DESCRIPTION

FROM	TO	
0	13	Overburden
13	336	Metagabbro; dark gray, medium-grained with local feldspathic zones.
336.	345.4	Sericite schist; with abundant 3 mm qz. phenocrysts.
345.4	379.	Qz. feld. porphyry; with 30%, 1-6 mm qz. phenocrysts.
379.	405.5	Feldspathic metagabbro.
405.5	415	Rhyolite tuff breccia; siliceous rhyolite fragments in a schistose matrix.
415.	447.	Porphyritic basalt.
447.	474.	Sericite schist; with fragmental texture and dolomite alteration, minor disseminated pyrite.
474.	519.6	Sericite schist; highly fragmental, with zones of disseminated pyrite, chalcopyrite and bornite.
519.6	522.1	Porphyritic basalt.
522.1	527.2	Sericite schist.
527.2	558.	Porphyritic basalt.
558.	677.5	Sericite schist; minor sections with chlorite schist.

*J. B. Budy*

DIAMOND DRILL CORE LOG

PROPERTY:	Kutcho Creek	LOCATION	32W, 6N
DRILL HOLE NO:	54	CLAIM	Jeff 6 (70306)
AZIMUTH:	180°	CORE SIZE	BQ
INCLINATION:	-60°	CONTRACTOR	Arctic Diamond Drilling
LENGTH:	768'	CORE STORAGE	Imperial Oil Camp
ELEVATION:	5310'		

DESCRIPTION

FROM	TO	DESCRIPTION
0	13	Overburden.
13	206.5	Qz. feld. porphyry; abundant qz. phenocrysts up to 12 mm.
206.5	214.1	Sericite schist; with fine-grained qz. phenocrysts and abundant dolomite.
214.1	217.8	Massive pyrite; with minor sphalerite and chalcopyrite.
217.8	240.7	Sericite schist; with fine-grained qz. phenocrysts.
240.7	266.1	Massive pyrite; with disseminated chalcopyrite, bornite and sphalerite.
266.1	330.5	Sericite schist.
330.5	615.0	Sericite-chlorite schist; and minor interbedded sericite schist.
615.0	655.0	Sericite schist.
655.0	701.0	Chlorite schist; with rhombic dolomite phenocrysts.
701.0	768.0	Sericite-chlorite schist.

*D. Bridg*

COST STATEMENT

DATE DRILLED

DDH 51	August 28	-	August 31, 1976
DDH 53	Sept. 1	-	Sept. 4, 1976
DDH 54	Sept. 5	-	Sept. 8, 1976

DIRECT DRILLING COSTS

1500.0 feet at \$10.75/ft.	\$ 16,125.00
570.5 feet at \$11.25/ft.	6,418.13

MATERIALS LEFT IN HOLE

36 feet BW casing	233.48
3 BW casing shoes	453.92

LABOUR AND TESTING

225 hours at \$13.30/hr.	2,992.50
--------------------------	----------

FUEL

240 gal. at \$1.80/gal.*	432.00
--------------------------	--------

CORE BOXES

83 boxes at \$6.00/ea.	498.00
------------------------	--------

HELICOPTER SUPPORT

18.9 hours at \$300/hr.	5,670.00
-------------------------	----------

HELICOPTER FUEL

18.9 hrs. x 23 gal./hr. @ \$1.80/gal.*	782.46
--	--------

DRILL SUPERVISOR

Dane Bridge, Geologist-12 days at \$70/day	840.00
--	--------

CAMP COSTS

60 man-days at \$30.00/day	1,800.00
----------------------------	----------

OFFICE AND SECRETARIAL COSTS

130.00

\*Fuel cost delivered to Kutcho Camp

Total Costs	\$ 36,375.49
Cost per foot	\$ 17.57

SCHEDULE A

BID SHEET AND JOB SPECIFICATIONS

1. DESCRIPTION OF WORK:

The work is to consist of a series of drill holes, drilled at locations specified by Imperial. A total minimum footage of 4,000 feet shall be drilled, but total footage may be extended by mutual consent. Maximum depth of any hole shall not exceed 1,000 feet and minimum depth shall be 200 feet. The Contractor will not be called upon to drill any hole at a flatter angle than -50 degrees. Measurement of all holes shall be taken from the top of the casing pipe. If holes of a greater depth than 1,000 feet are desired, such drilling shall be performed only upon such conditions and at such rates as may be agreed upon before commencement of such drilling.

2. SCHEDULE OF RATES:

Imperial agrees to pay the Contractor for footage drilled and other services performed as follows:

(a) Coring at Bedrock

Depth Intervals	BQ	Size	Size
0 - 500 Ft.	\$ <u>10.75</u>	/Ft.	\$ <u>          </u> /Ft.
500 - 1000 Ft.	\$ <u>11.25</u>	/Ft.	\$ <u>          </u> /Ft.
1000 - 1500 Ft.	\$ <u>11.75</u>	/Ft.	\$ <u>          </u> /Ft.
<u>      </u> - <u>      </u> Ft.	\$ <u>          </u>	/Ft.	\$ <u>          </u> /Ft.

(b) Casing of Overburden

Depth Interval	
0 - 50 Ft.	\$ <u>10.75</u> /Ft.
50 - 100 Ft.	\$ <u>          </u> /Ft.
<u>      </u> - <u>      </u> Ft.	\$ <u>          </u> /Ft.

(c) The following services will be provided on an operating Field Cost basis:

1. Casing of overburden over 50 ft.
2. Reaming and setting casing for borehold reduction, borehole stabilization, and control of return water.
3. Drilling caved or broken ground.
4. All cementing operations, excluding setting time but including drilling of set cement.
5. Supplying water to the drill when water supply over 2,500 ft. lateral and/or 250 ft. vertical lift

from borehole collar under non-freezing conditions and all costs ~~of internal and/or vertical lift~~ under freezing conditions.

6. Recovering pipe and/or casing at Imperial's request.
7. Hole orientation tests.
8. Setting of wedges, at Imperial's request, for the purpose of directional drilling.

Where operating Field Costs are defined as:

Operating Field Costs

Labour (including Supervision) \$13.30 per man hour.  
 Tractor N/A per hour.  
 Water Truck (excluding driver) N/A per hour.

Equipment

Drills	Type	Operating Hourly Rate
<u>1</u>	<u>C/L Model 38</u>	<u>\$8.00</u>
<u>1</u>	<u>B.B. BBS-1 /12 BH</u>	<u>8.00</u>
Pumps	Type	Operating Hourly Rate
_____	<u>N/A</u>	_____
Other	Type	Operating Hourly Rate
_____	<u>N/A</u>	_____
_____	_____	_____

While operating on a Field Cost basis, supplies consumed or damaged beyond use, including diamond articles, mud ingredients, cement, rods, core barrels, etc. shall be for Imperial's account at site replacement value plus 10 %. However, if due to Contractor negligence, or through poor drilling practices, equipment is damaged or lost and hole is not completed, then these costs shall be for Contractor's account.

(d) The following services would be provided on a non-operating Field Cost basis:

1. Setting time for cement.
2. Delays caused by Imperial.

Where non-operating Field Costs are defined as:



Non-Operating Field Costs

Labour (including supervision)	<u>\$13.30</u>	per man hour.
Drill, pumps and service vehicle	<u>-</u>	per drill hour.
Tractor - operating	<u>-</u>	per hour.
Tractor - non-operating	<u>-</u>	per hour.

(e) Travelling Time

Imperial agrees to pay for travelling time from camp site  
\_\_\_\_\_ to drill site and return per shift on the  
following basis:

Labour \$11.50 per ~~day~~ man-hour, after the first  $\frac{1}{2}$  hour  
Vehicle \_\_\_\_\_ per day. \_\_\_\_\_ per man

(f) Mobilization and Between Hole Moves

Labour \$13.30 per man-hour.

(g) Room and board for Contractor's personnel will be provided by  
Company.

Contractor will provide meals and accommodation for up to  
N/A of Imperial's representatives at a price of N/A  
per day.

Room and board will be provided by Imperial to Contractor at  
- per man day.

(h) Core boxes, including lids, will be provided by Company  
\_\_\_\_\_. Contractor's rates for core boxes on site shall  
be \$ -.

(i) Core splitter to be supplied by Company  
Contractor to supply core splitter at - per -.

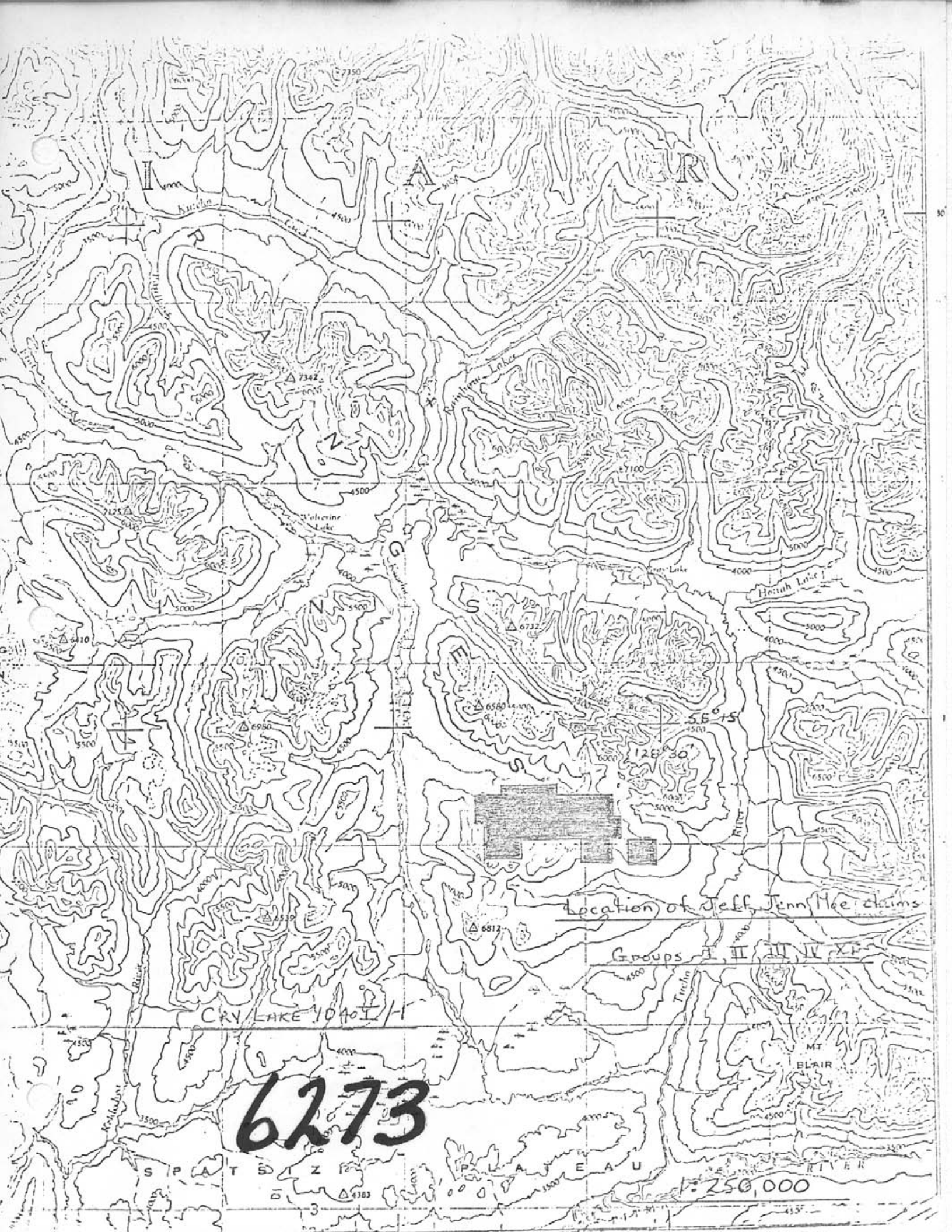
(j) Standby Rental

It is agreed that, at the completion of the present active  
drilling program, Imperial may retain the Contractor's drilling  
equipment at the drill area for a rental rate of -  
per - per drilling unit. The standby rental charge will  
cease to apply upon commencement of continuous drilling program,  
or on the giving of a written notice to the Contractor by  
Imperial that the drilling equipment is no longer required.

\*\* Should drilling not recommence by June 10, 1977, the  
Company will pay the Contractor \$100.00 per day from  
June 10, 1977 until recommencement of drilling, or  
demobilization of equipment.

(k) Special Agreements

- (1) The Contractor will mobilize and demobilize his drill and supplies to and from Dease Lake and will charge \$1,600.00 for same. This charge will be divided equally between the Company and Sumitomo Metal Mining Ltd.
- (2) The Contractor will mobilize and demobilize his crew to and from Rainbow Lake and will charge \$1,800.00 for same.
- (3) Delays caused by lack of transportation will be charged at Non-operating Field Cost.
- (4) Fuel, gas, oil and propane for drills, pumps, heaters and camp will be supplied by the Company at no cost to the Contractor.



6273

Location of Jeff, Jenn, Mee claims

Groups I, II, III, IV, V

1:250,000

S P A T S I Z

P L A E A U

R I V E R

MT  
BLAIR

3

Δ 4783



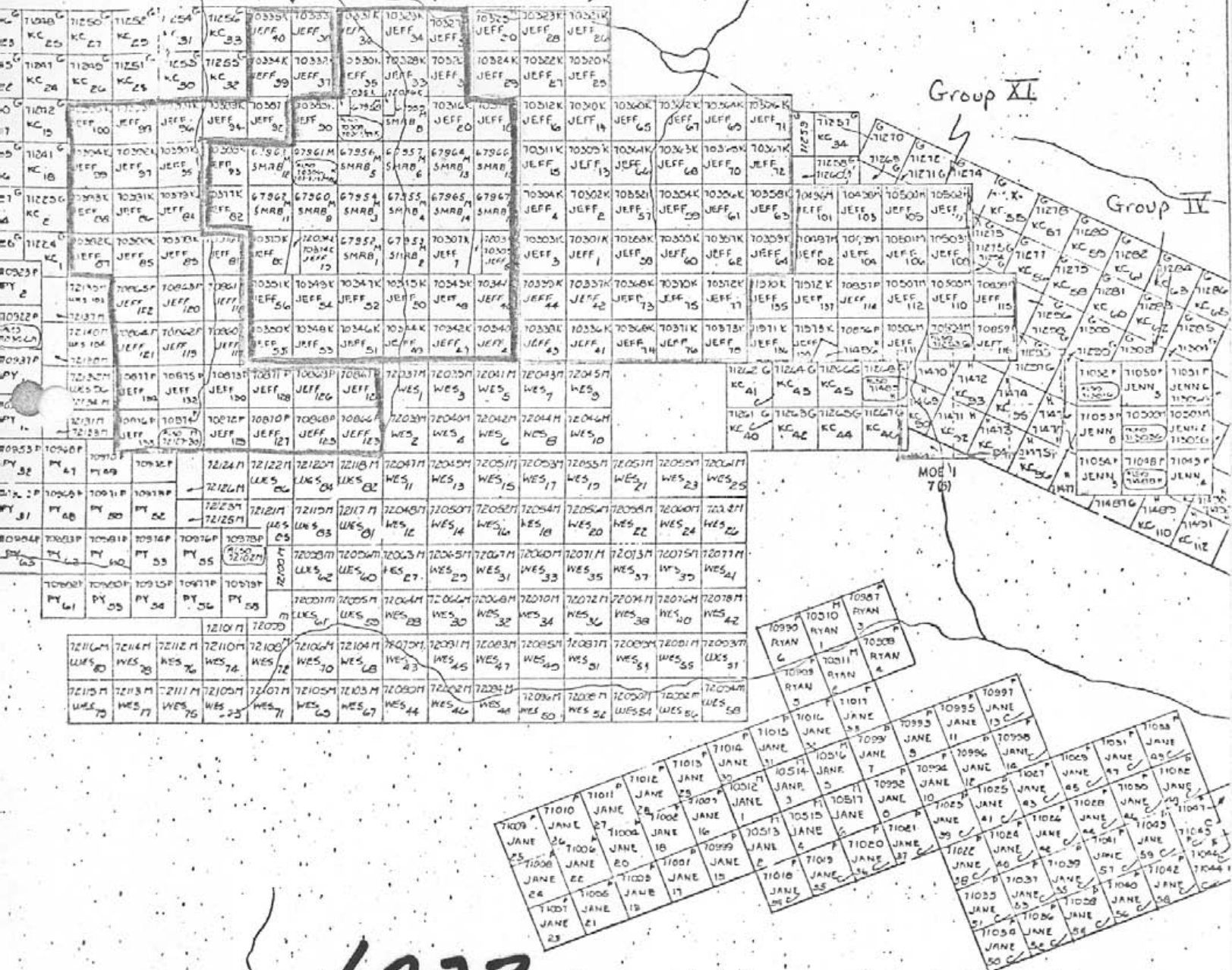
Group III

Group II

Group I

Group XI

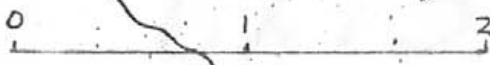
Group IV



6273

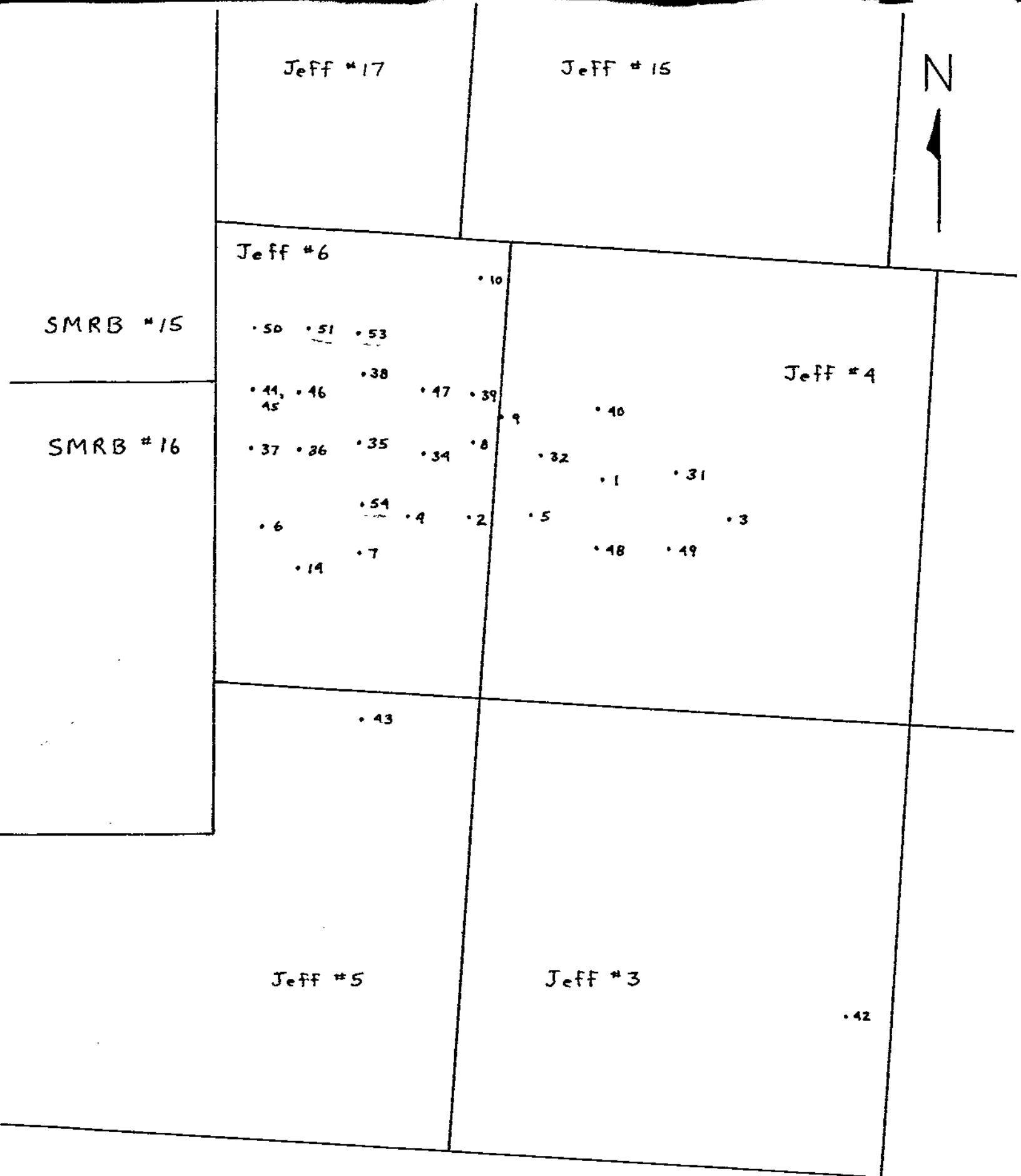
Claim Index Map

- Jenn, Jeff, Moe claims



Scale in Miles

104 I/IW



Diamond Drill Hole Locations  
 Jeff Claims, Groups I and II

1" = 400'

6273