

6290

Geochemical Report
on the
ALI Mineral Claim,
Revelstoke Mining Division

by

P.E. Fox, PhD. P.Eng.
Fox Geological Consultants Limited
Kamloops, B.C.
June 1, 1977

for

Conwest Exploration Canada Limited
1010-85 Richmond St. West
Toronto, Ontario

MINERAL RESOURCES BRANCH
ASSESSMENT REPORT

NO. _____

TABLE OF CONTENTS

INTRODUCTION	1
LOCATION AND ACCESS	1
PHYSIOGRAPHY	1
CLAIMS	4
WORK PROGRAM	4
GEOLOGY	5
GEOCHEMISTRY	5
DISBURSEMENTS	6

ILLUSTRATIONS

Figure 1. Location Map	2
Figure 2. Claim Map	3
#1 Figure 3. Geochemical Map for Copper and Zinc	in pocket
#2 Figure 4. Geochemical Map for Lead and Silver	in pocket

INTRODUCTION

The purpose of this report is to give results of geochemical work done on the ALI claim (20 units), Revelstoke Mining Division. This report is filed in support of assessment work done between October 5 and October 14, 1976. This work is an extension of geochemical work done between June 4 and June 14, 1976. Results of this program are given in a report by P.E. Fox, P.Eng. dated July 10, 1976.

LOCATION AND ACCESS

The ALI claim is situated on the south slope of the Goldstream River valley 76 km north of Revelstoke (Figure 1) $51^{\circ}36'N$ $118^{\circ}24'W$, NTS 82M9 (W). The claims are easily reached by Highway #23, 100 km north of Revelstoke and approximately 20 km of dirt-surfaced logging roads that follow the south bank of the Goldstream River.

The access road is currently open to 2-wheel drive vehicles as far as a steep north-flowing creek on the ALI claim (Figure 1).

PHYSIOGRAPHY

The ALI claim covers steep, heavily timbered slopes on the south side of the Goldstream River. Relief from the north boundary to the south boundary of the claim is approximately 3000 feet. The elevation of the north boundary is approximately 2500 feet above sea level. A steep north flowing creek, which joins the Goldstream River just west of Sweeper Bill Creek (Figure 2) forms a prominent V-shaped gully in the western half of the claim.

Slopes are covered with a thick growth of fir, cedar and balsam



#6290

Fig. 1 Location map for the ALI mineral claim, Revelstoke Mining Division. Scale 1:250,000, NTS 82M9(W). To accompany: Geochemical Report on the ALI Claim, by P.E. Fox P.Eng. June 1, 1977

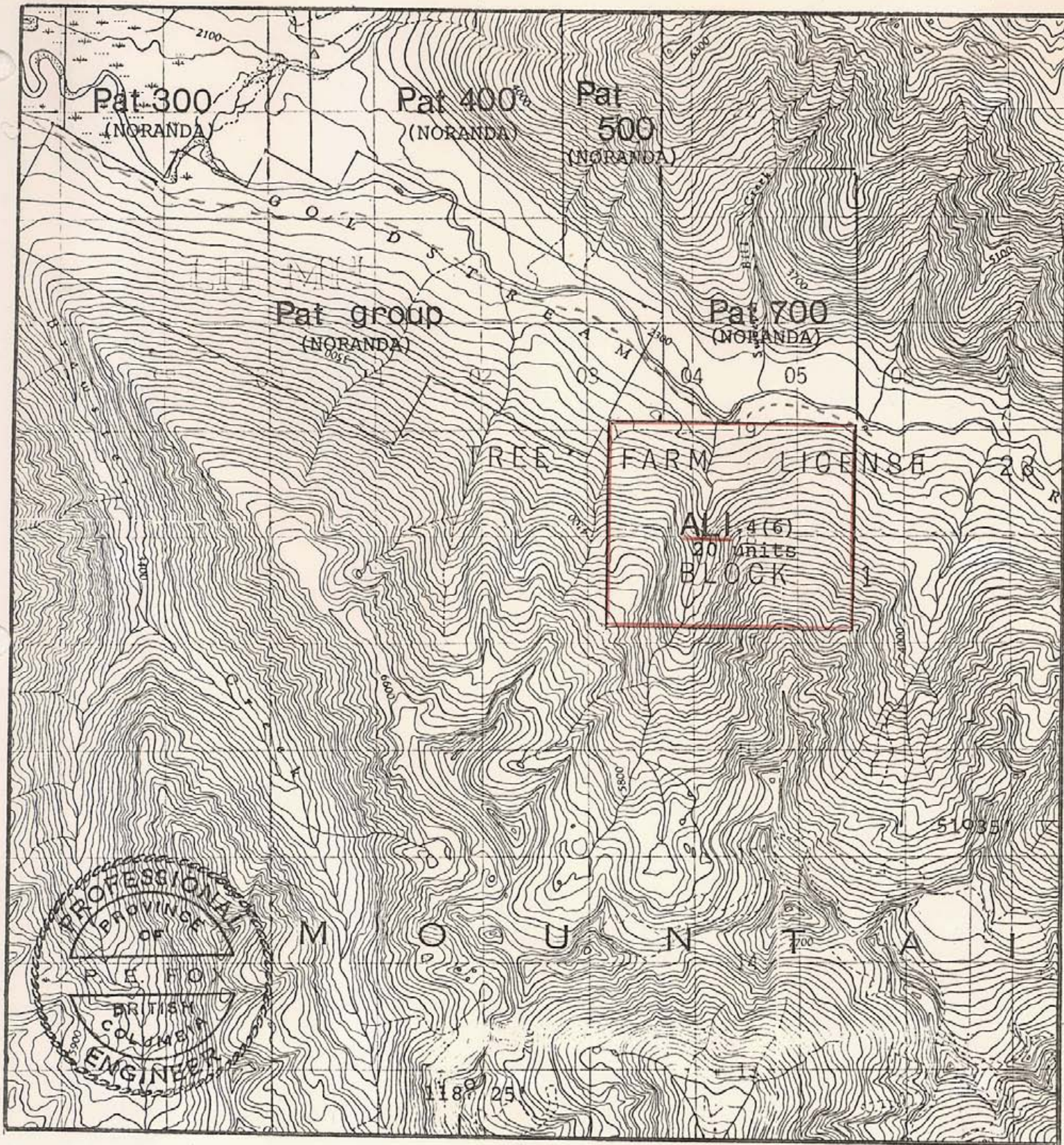


Fig. 2 Claim map for the ALI claim and adjoining area.
Scale 1:50,000, NTS 82M9 (W). To accompany: Geochemical
Report on the ALI Claim, by P.E. Fox P.Eng., June 1 1977

#6290

as well as a dense tangle of cedar saplings, alder, decaying deadfall and devils club. Slopes below 3000 feet are generally moist and swampy but upper slopes are well drained and frequently consist of steep moss-covered bluffs and talus. Soil cover is generally thin -rarely more than a few metres thick.

CLAIMS

The ALI claim consists of 20 units and was recorded on June 24, 1975 (record number 4). The legal corner post is situated at the northeast corner of the claim on the north side of the access road (Figure 2). The claim was staked by and is currently owned by W. Rainboth, 1010-85 Richmond Street, W., Toronto, Ontario. One years assessment work (\$4,000.00) was filed on this claim by P.E. Fox on June 23, 1976 and a credit of \$800 was applied to the assessment year 1976-77. Work filed herein will advance the claim one year (June 24, 1978).

WORK PROGRAM

The 1976 work program consisted of an extension of the grid system from 1800W to 2500W and geochemical soil sampling. The work was done between October 5 and October 14, 1976. A grid system consisting of 2.6 km of flagged lines was prepared by Amex Exploration Services Ltd. The access road was utilized as a convenient base line and coordinants were determined for grid lines spaced 100 metres apart. The north boundary of the claim is ON. Grid lines were marked at 50 metre intervals. Geochemical work consisted of soil sample collection at 50 metre inter-

vals along established grid lines. Samples from the upper valley slopes were collected from a well developed reddish horizon immediately below a layer of decayed forest material. Soils taken from the lower slopes are generally brown, moist, gleyed soils covered by about 30 cm of roots and decaying organic matter. Samples were collected by grubhoe and stored in kraft paper bags. The -80 mesh fraction was analysed by Acme Analytical Laboratories for copper, lead, zinc and silver. Results of the geochemical program are shown in plan form in Figures 3 and 4.

GEOLOGY

The property is underlain by rocks believed to belong to metamorphic equivalents of the Hamil Group. Micaceous quartzite, phyllite and thin layers of muscovite schist are exposed near the south end of the grid and in a steep gulley near the centre of the claim. Mica schists and one outcrop of dark grey limestone occur along the access road in the PAT 700 claim.

Noranda Exploration has announced the discovery of a stratabound massive sulphide body on the adjoining PAT group comprising 3.175 million tonnes of 4.49% copper, 3.24% zinc, and 0.68 oz per ton silver. The sulphides form a massive stratabound layer about 3 m thick in north-dipping dark grey metamorphosed argillites.

GEOCHEMISTRY

Results of the geochemistry program are given in Figures 3 and 4. Figure 3 gives analyses for copper and zinc and Figure 4 gives results for lead and silver. Copper content ranges from 5 to 42 ppm, zinc from

19 to 230 ppm, lead from 17 to 52 ppm, and silver from 0.1 to 0.4 ppm. These metal concentrations are below threshold values for soils overlying and down-slope from the mineralized zone on the adjoining Noranda property and are not considered anomalous. Soils on the ALI claim are developed on glacial tills and colluvial rock debris derived from steep bluffs near the south boundary of the claim. This material conceals much of the bedrock in the ALI claim hence it is doubtful if bedrock materials are clearly reflected in the geochemical information obtained so far.

DISBURSEMENTS

Period: October 5 to October 14, 1976.


Type of work: 2.6 km of grid preparation and geochemical soil sampling. Work done by Amex Exploration Services Ltd, Kamloops, B.C. Six men employed, supervised by A.A. Ablett and P.E. Fox, PhD. P.Eng.

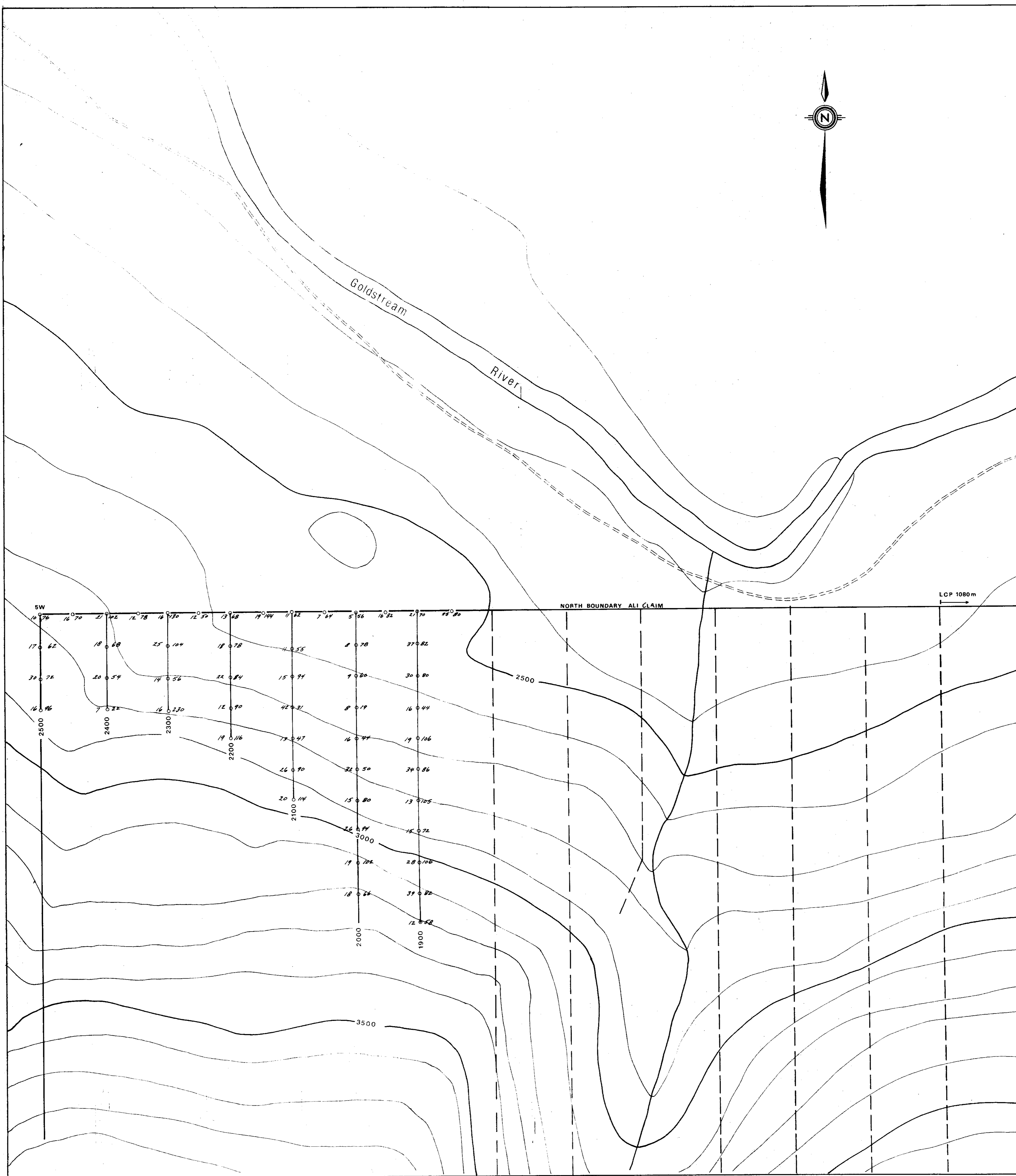
1. Grid preparation and sample collection by contract. 2.6 km grid, 52 soil samples collected on ALI claim. 2.6 km x \$315.00/km	\$819.00
2. Geochemical analyses by Acme Analytical Laboratories Ltd., Burnaby B.C. -80m fraction, atomic absorption methods. 52 samples @ \$2.58	134.16
3. P.E. Fox, PhD., P.Eng. Report preparation, clerical.	<u>300.00</u>
Total Expended	<u>\$1253.16</u>

Exploration work paid by Conwest Exploration Canada Limited, 1010-85 Richmond St., Toronto, Ontario.

Prepared by

FOX GEOLOGICAL CONSULTANTS LTD.


P.E. Fox, Ph.D. P.Eng.
June 1, 1977

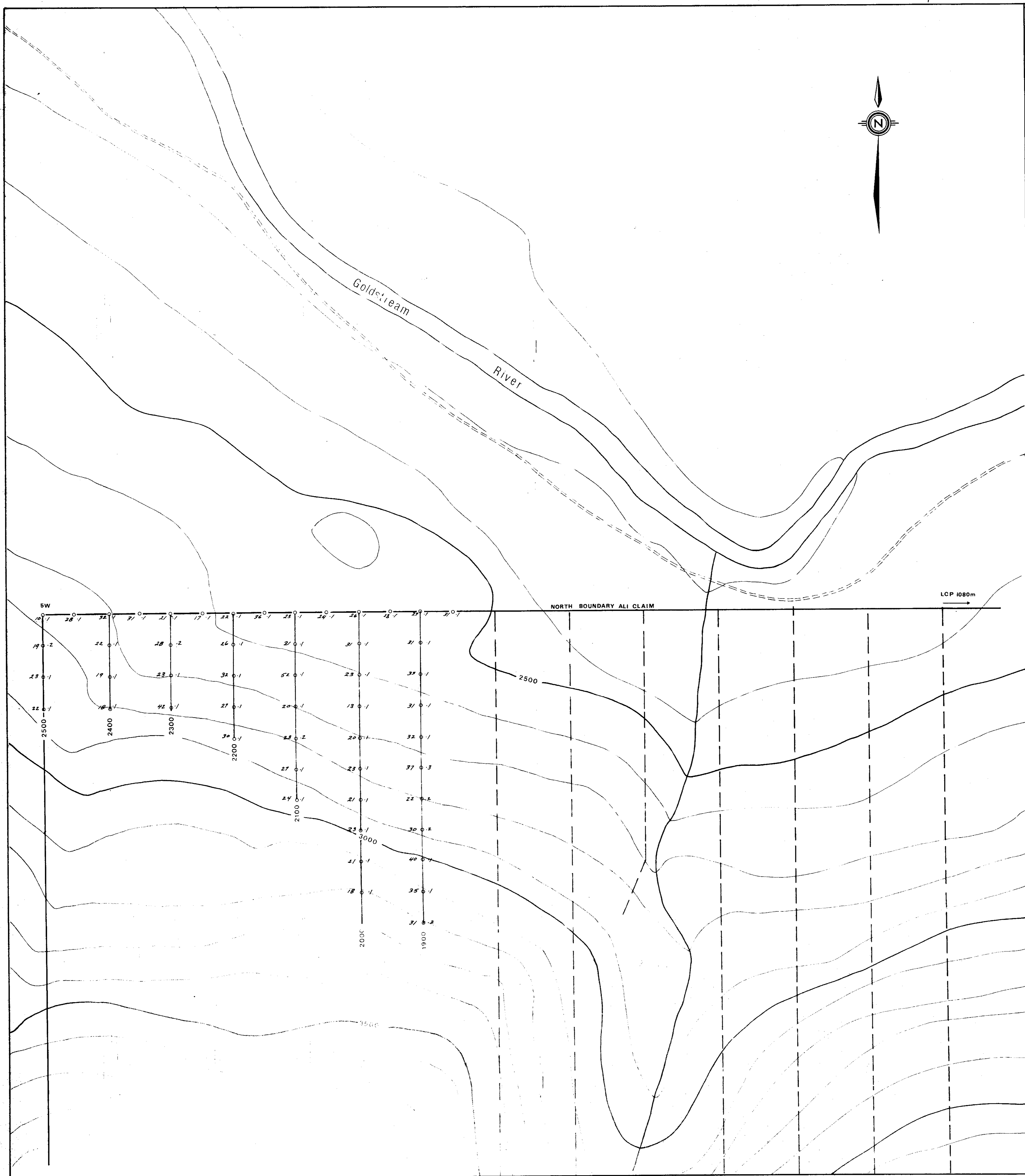


- 1900 ——— Grid line; 1976 extension
- Existing grid; June, 1976
- ==== Access road
- Soil sample site showing ppm Cu and ppm Zn

6290
M-1

J. Fox

FOX GEOLOGICAL CONSULTANTS LTD			
CONWEST EXPLORATION CANADA LIMITED ALI Claim, Revelstoke M.D. GEOCHEMICAL MAP FOR COPPER AND ZINC			
To accompany: Geochemical Report on the ALI claim, by P.E. Fox Ph.D. P.Eng., June 1 1977			
Scale	1:2500 1" = 200.3 ft	NTS 82M9	Date June 1 77
			Fig 3



- 1900 ——— Grid line: 1976 extension
- Existing grid: June 1976
- ==== Access road
- Geochemical soil sample site showing ppm Pb and ppm Ag

6290
M-2

R. Fox

FOX GEOLOGICAL CONSULTANTS LTD			
Conwest Exploration Canada Limited			
ALI Claim, Revelstoke H.D.			
GEOCHEMICAL MAP FOR LEAD AND SILVER			
To accompany: Geochemical Report on the ALI Claim, by P.E. Fox Ph.D. P.Eng., June 1, 1977			
SCALE	1:2500 1" = 200.0 Ft	NTS 82M9	Date June 1 77
			Fig. 4