

# 6294

REPORT ON

DIAMOND DRILLING PROGRAM

"CM" CLAIMS

MINERAL CLAIM MAP 92I/5E

LYTTON AREA

KAMLOOPS MINING DIVISION

LAT.  $50^{\circ} 25'$  N., LONG.  $121^{\circ} 38'$  W.

SEPT. 27 to OCT. 12, 1976

HOKO EXPLORATION LTD.

MINERAL RESOURCES BRANCH  
ASSESSMENT REPORT

NO. \_\_\_\_\_

GEO. L. LAMONT, P.Eng.

TABLE OF CONTENTS

	Page
INTRODUCTION . . . . .	1
LOCATION AND ACCESS . . . . .	2
PROPERTY . . . . .	2
HISTORY . . . . .	3
GEOLOGY AND MINERALOGY . . . . .	4
DRILLING PROGRAM . . . . .	5
CONCLUSIONS . . . . .	7
STATEMENT OF EXPENDITURES . . . . .	8
CERTIFICATION . . . . .	9

ILLUSTRATIONS

LOCATION MAP . . . . . FIG. 1 . . . . .	Insert following report
PROPERTY MAP . . . . . FIG. 2 . . . . .	" " "
WORK AREA MAP . . . . . FIG. 3 . . . . .	" " "
D.D.H. #1 SECTION . . . FIG. 4 . . . . .	" " "
D.D.H. #2 SECTION . . . FIG. 5 . . . . .	" " "
DIAMOND CORE LOGS AND ASSAY SHEETS . . . . .	" " "
DRILLING CONTRACT . . . . .	" " "
EXPENDITURE VOUCHERS . . . . .	In pocket

## INTRODUCTION

A copper prospect in the Izman Creek area, north of Lytton, B.C., was brought to the attention of the management of Hoko Exploration Ltd. in the summer of 1975 by J.P. Elwell, P.Eng. Information known to Mr. Elwell apparently indicated widespread occurrence of copper mineralization enhanced somewhat by a copper anomaly as disclosed by a geochemical survey conducted several years previously. Subsequently the CM claim of 16 units was staked to cover the area of greatest interest.

In 1976 the writer was contracted to conduct an initial drilling program to probe the main copper shows. A preliminary visit to the site disclosed the location of three Bob claims covering the main mineral shows. As these claims proved to be valid, an agreement between the owner and Hoko Exploration was concluded prior to commencement of drilling activities. Hoko management was not aware of the existence of the Bob claims prior to staking of the CM claim.

All work pertinent to the drilling was conducted by contract, hence there were no employees of Hoko engaged on the project. The drilling was let to Wink International Exploration Drilling Ltd. of Richmond, B.C. which started on September 27th and was terminated on October 12, 1976. Water was hauled to the drill sites with the equipment supplied by Kerpan and Delfs Ltd. of Kamloops, B.C. Owing to the anticipated short duration of the project camp accommodation was not set up. Rooms and meals for personnel were provided at a local motel in Lytton.

The drilling program was not successful in reaching its objectives. At two drill sites the bedrock was found to be highly fractured

and shattered and the drilling equipment was not suitable to overcome the difficulties encountered. After penetrating a total of only 32.3 metres (106 feet) in 14 days the project was terminated for the season.

It was impossible to draw any conclusions regarding the mineralization on this property as a result of the initial drilling attempt, but since the mineralization is widespread it is recommended that drilling should be pursued another season.

#### LOCATION AND ACCESS

The property is located in the Kamloops Mining Division, east of the Fraser River, approximately 27 kilometers north northeast of the town of Lytton, B.C. The claims are situated in open timber on the crest and south slope of an unnamed mountain lying between the north and south branches of Izman Creek. Fig. #1.

Access to the property is from highway #12 at a point 19 kilometers north of Lytton, thence east and north  $6\frac{1}{2}$  kilometers by a gravel road, then east for approximately 8 kilometers by an access road along the south branch of Izman Creek leading eventually to the working area at the crest of the mountains at an elevation of approximately 1645 meters.

#### PROPERTY

The property consists of 4 overlapping claims as shown in Fig. #2; 1 claim of 1 unit and 1 claim of 16 units under the new staking system and 2 claims under the previous system. They are filed in the Kamloops Recording Office as:

<u>Claim Numbers</u>	<u>Record Numbers</u>
CM (16 units)	87
Bob 1, 2	86004, 5
Bob 3 (1 unit)	50

The CM claim was staked and recorded in the name of Mr. C. Mark, Box 10084, 700 W. Georgia Street, Vancouver, B.C. The Bob claims were staked and recorded by Mr. R. Hurley, 4659 Gatenby Avenue, Burnaby, B.C. Ownership of the CM claim was subsequently transferred by Bill of Sale to:

Hoko Exploration Ltd.  
 Box 10084  
 700 W. Georgia St.  
 Vancouver, B.C.

The Bob claims, staked prior to the CM claim, were grouped with the latter for assessment work purposes and are currently controlled by Hoko Exploration Ltd. by virtue of an option agreement.

In the absence of a legal survey, the location of the Bob claims and their relation to the CM claim is believed to be as shown on Fig. #2. The Bob claims can be readily related to the old workings and features of the access road shown in more detail on Fig. #3. The Legal Corner Post of the CM claim is located 30 meters south of the access road at a point 1.1 kilometers (0.7 miles) from the Izman Creek road junction.

#### HISTORY

The initial exploration work in the area of the property, consisting of an adit, a winze and a number of open cuts, is believed to date from about 1915. The work was carried out over quartz veins carrying

pockets of chalcopyrite. The key claims of that period were held continuously until 1970 when the property was acquired by Santana International Resources Ltd. This company expanded the holdings to over 60 claims and constructed the access road to the showings on the crest of the ridge where they carried out considerable trenching. In 1972 the claims were optioned to El Paso Mining and Smelting Co. Work by the optionee consisted of geological mapping, a magnetometer survey and a geochemical survey. The option was dropped in December of the same year and the claims lapsed. Subsequently the Bob claims were staked by Mr. R. Hurley and a partner to cover the main mineral shows. Apparently Hoko Exploration Ltd. was not aware of the existence of the Bob claims when staking the CM claim in August 1975.

#### GEOLOGY AND MINERALOGY

The predominant bedrock underlying the claim area is the Mount Lytton Batholith of Lower Cretaceous age. It consists of granodiorite, quartz monzonite and related acidic intrusives. At the higher elevations and on the crest of the ridge the intrusives are capped by remnants of the Cache Creek Formation consisting of altered and silicified andesites, crystalline limestone and skarn.

The apparent strike of the limestone bedding is northwesterly with steep dips both to the southwest and the northeast, indicating a sharp anticlinal folding due probably to intrusion of the batholith. Numerous quartz veins varying from 1 cm to 50 cm in width cut both intrusive and sedimentary rocks.

At the main shows the principal economic mineral is chalcopryrite, with minor amounts of bornite, occurring as blebs and pods in the quartz stringers, and as disseminations in the skarn. Molybdenite is present but seldom observed, and assaying by previous operators indicated small amounts of silver and traces of gold. On the lower flanks of the mountain, pyrite and chalcopryrite occur as dissemination and along fractures of the quartz monzonite. Malachite is prevalent in all mineralized areas.

#### DRILLING PROGRAM

There is no record of diamond drilling on this property by previous operators. Trenches and adits are shallow and therefore the relationship of the mineralization to the bedrock is obscure. The primary objective of the drilling was to determine if the mineralization seen on surface was restricted to the sedimentary rocks or extended into the underlying intrusives; secondly to disclose the occurrence of disseminated mineralization in the intrusives.

The drilling program was based on a minimum contract for 500 feet (152 meters) of diamond drilling distributed in 3 or 4 holes, the locations and depths to be determined by conditions encountered at the site. A "Winkie" portable drill and 2-man crew were contracted from Wink International Exploration Drilling Ltd. of Richmond, B.C. The absence of water near the drill sites necessitated trucking water from a pool on Izman Creek. A truck with water tank and driver were contracted from Kerpan and Delfs Ltd. of Kamloops, B.C.

Two holes were located and drilled as shown on Work Map Fig. #3. They were tied in by chain and compass to well identified road and mineralogical features. Both holes were collared in granodiorite and directed at approximately  $90^{\circ}$  to the strike of the mineral shows, and at a dip to intersect a downward extension about 30 to 40 meters below the outcrop.

The drilling failed to reach desired depths in either hole owing to a very persistent shattered condition of the bedrock, and the inadequacy of the drilling equipment to surmount the difficulty. Bit and core barrel jammed continually every 10 to 20 centimeters resulting in continual pulling of rods and bits. In D.D.H. #1 an attempt to cement a particularly bad section and stop caving, was of no help. Ground conditions below cement section did not improve and the hole was ultimately abandoned at 23 meters after 8 days drilling.

In the event that the unfavourable rock conditions may have been very localized, a second drill site was picked approximately 60 meters to the southeast. Extremely unfavourable ground conditions were again encountered and on twisting off a diamond bit and reaming shell, the second hole was abandoned at a depth of a little over 9 meters. At this point it was obvious to all concerned that the equipment being used was unsuitable to achieve desired results and the program was suspended.

The core logs of the two holes with all pertinent drill hole data are enclosed following the maps and sections. Although core recovery was very poor, samples were taken from the entire footage and assayed for copper and zinc. Core were stored on the property, in the adit immediately southwest of D.D.H. #1.

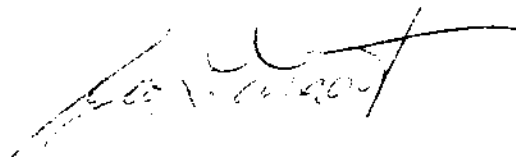


CONCLUSIONS

The initial drilling program conducted on the CM property was not successful in reaching its objectives, and no positive conclusions can be drawn at this time regarding the subsurface extent or value of the mineralization. The failure of the project is due to an unfortunate choice of light exploratory drilling equipment with which it was impossible to cope with extremely unfavourable bedrock conditions.

Surface exploration of the property by previous operators disclosed widespread distribution of sulphide mineralization locally containing interesting values in copper. The writer believes the property is a viable prospect and that some effort to evaluate the subsurface potential is warranted. It is recommended, however, that either heavier diamond drilling equipment, or an alternative drilling method should be considered in further exploration of this property.

Respectfully submitted



Geo. L. Lamont, P.Eng.

June 16, 1977  
Brentwood Bay, B.C.

STATEMENT OF EXPENDITURES

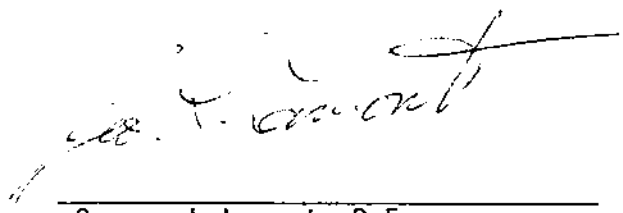
Wink International Exploration Drilling Ltd.	\$8,221.20
Imperial Oil Limited - drill fuel	176.06
Kerpan and Delfs Ltd. - water truck	1,113.75
Budget Rent-A-Car (4 x 4 truck)	940.60
General Testing Laboratories - Assaying	55.00
Accommodation	
G.L.Lamont	
Drilling crew	
Water truck driver	<u>1,200.25</u>
TOTAL	<u>\$ 11,706.86</u>

CERTIFICATION

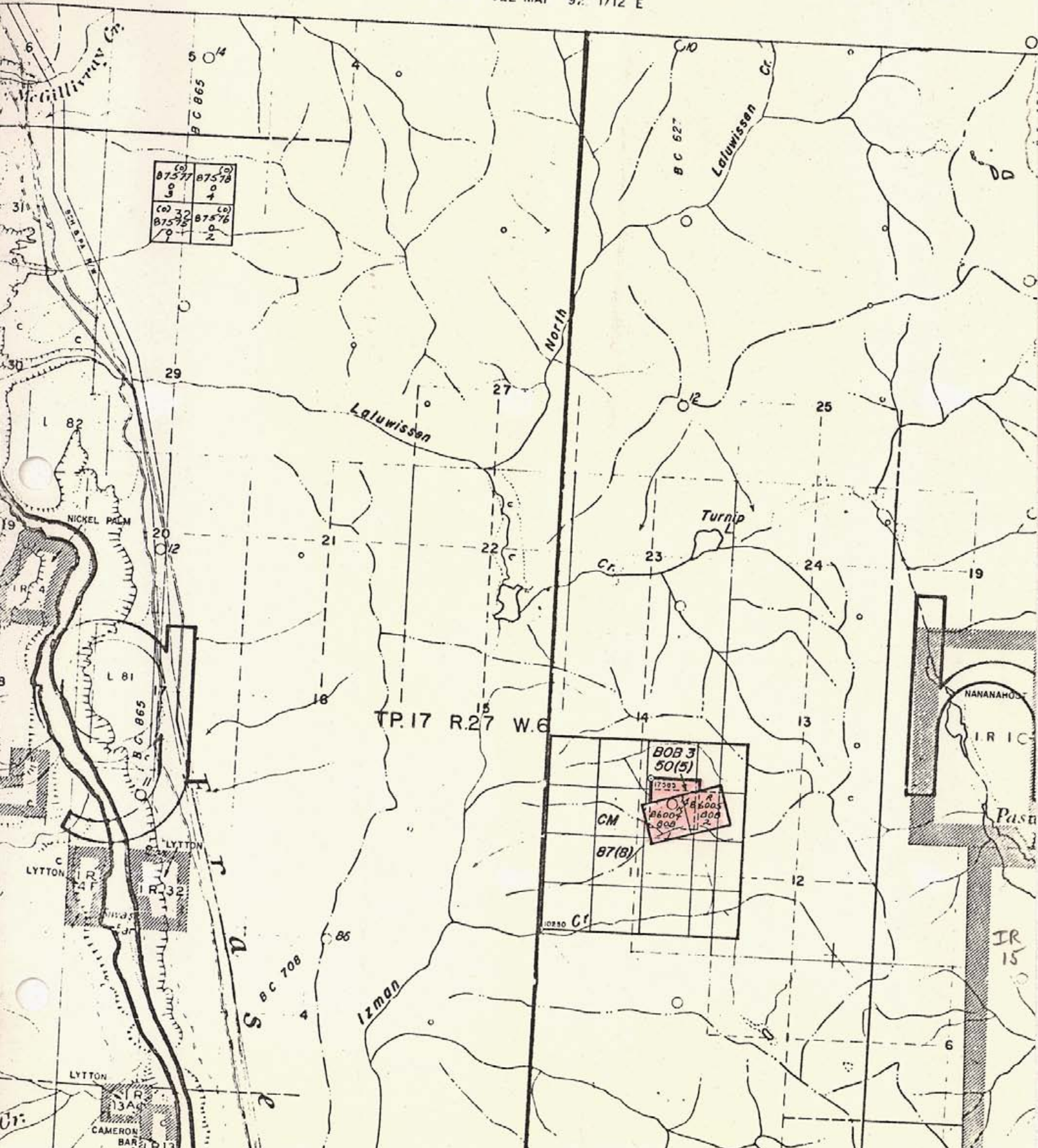
I, George L.Lamont, of 1445 Benvenuto Avenue, in the Municipality of Central Saanich, in the Province of British Columbia, hereby certify:

1. That I am a Consulting Geologist.
2. That I am a graduate of the University of Toronto, Toronto, Ontario, with a B.A. degree in Geology and Mineralogy, 1942.
3. That I am a member in good standing of the Association of Professional Engineers of British Columbia.
4. That I have practiced my profession for thirty-four years.
5. That I do not have, nor expect to have, any interest in the C M claims or Hoko Exploration Ltd.
6. That this report is based on personal supervision of the program on the property herein described.

DATED this 16th day of June, 1977.

  
\_\_\_\_\_  
George L.Lamont, P.Eng.

TO NORTH SEE MAP 92 1/12 E



(C) 87577	(C) 87578
5	4
(C) 87575	(C) 87576
0	2

BOB 3	
50(5)	
17382	18605
18600	18600
800	11-2
CM	
87(B)	
10380 Cr	

TP. 17 R. 27 W. 6

NANANAHOE

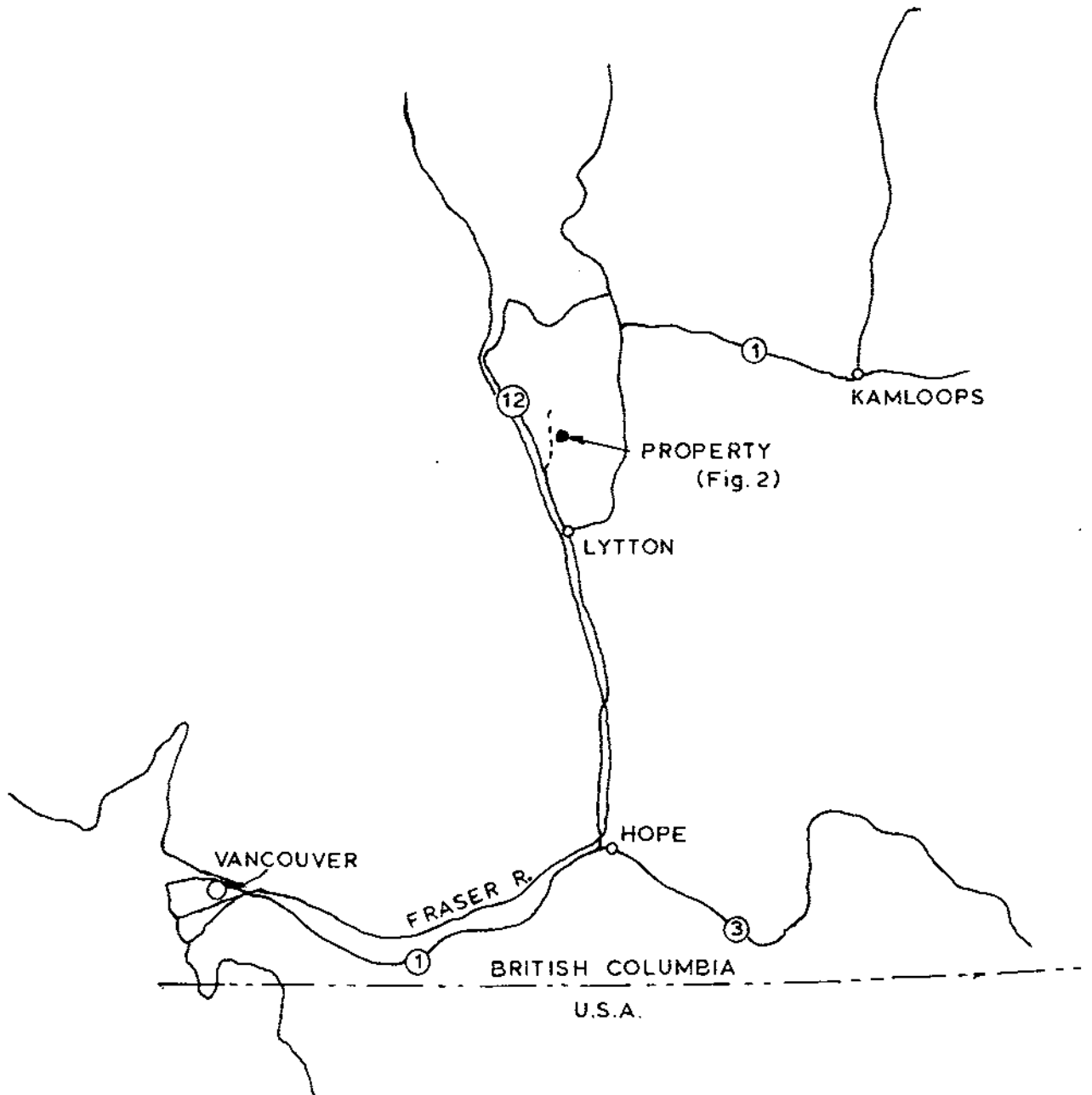
Pasn

IR 15

LYTTON

LYTTON  
CAMERON BAR

6294



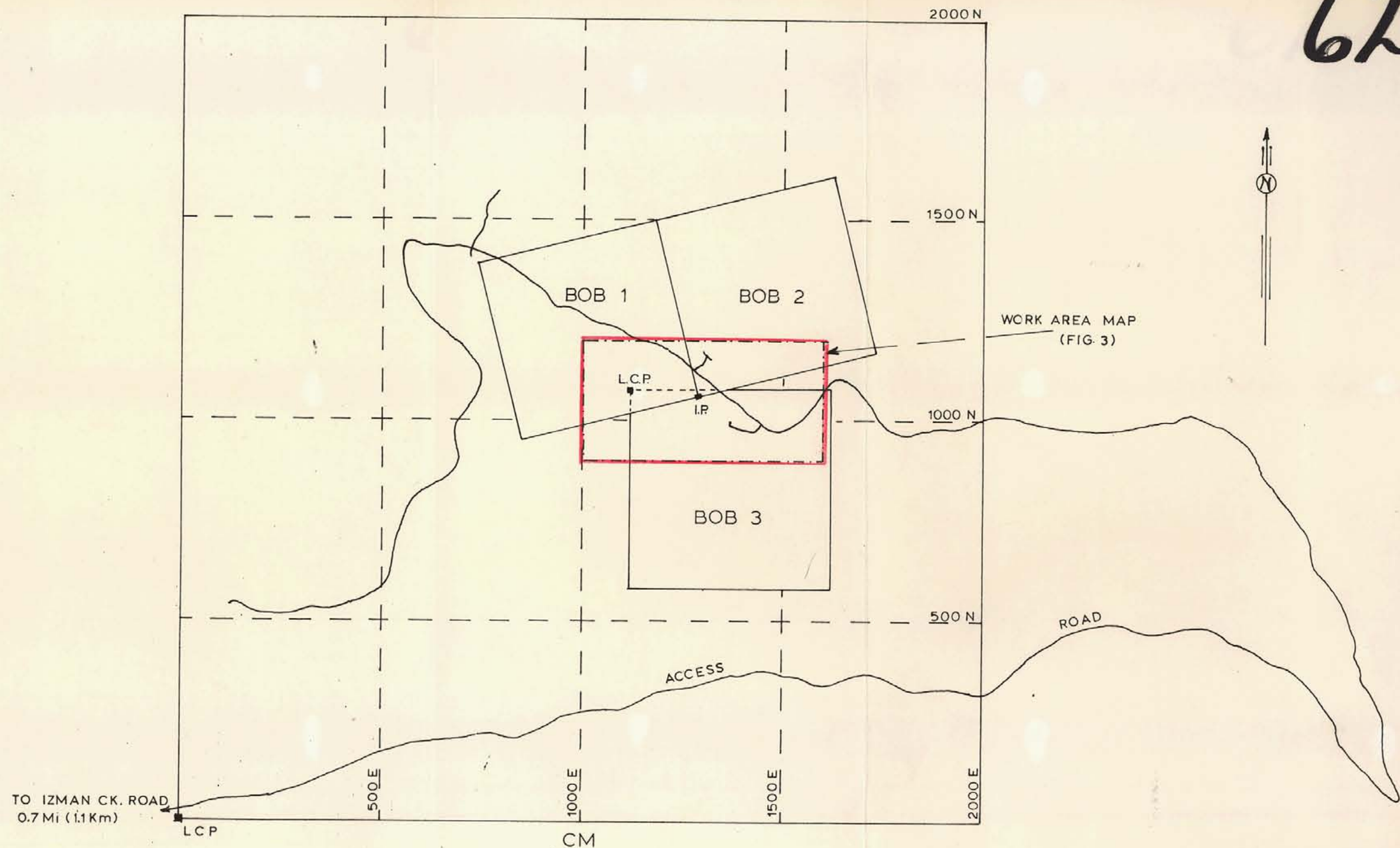
HOKO EXPLORATION LTD.  
LYTTON AREA  
KAMLOOPS M.D.  
LOCATION MAP

1"=30 Mi. MAR. 1977 G.L.L.  
(1 Cm.=19 Km.)

*John Stewart*

FIG. 1

6294

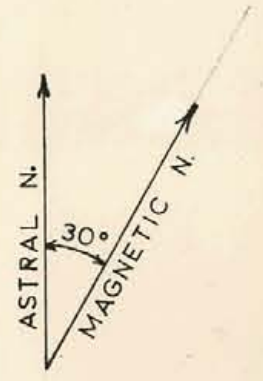
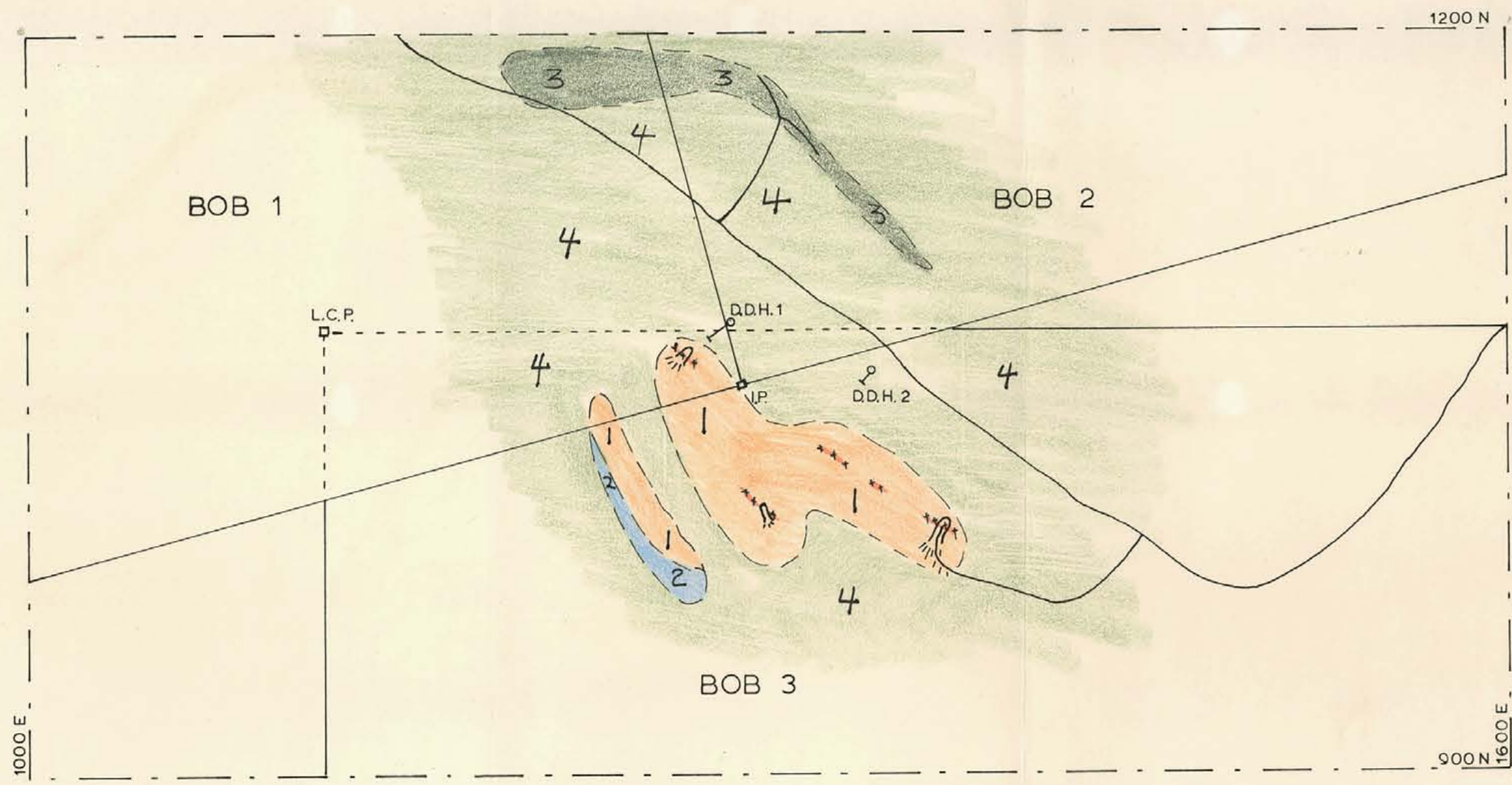


HOKO EXPLORATION LTD.  
 LYTTON AREA  
 KAMLOOPS M.D.  
**PROPERTY MAP**  
 1 Cm. = 100 M. MAR. 1977 G.L.L.



*Geoffrey H. Hoko*  
 FIG. 2

6294



- 4  QUARTZ DIORITE (GRANODIORITE)
- 3  DIORITE GNEISS
- 2  LIMESTONE
- 1  SKARN
- MINERALIZED ZONE
- OPEN CUT OR ADIT

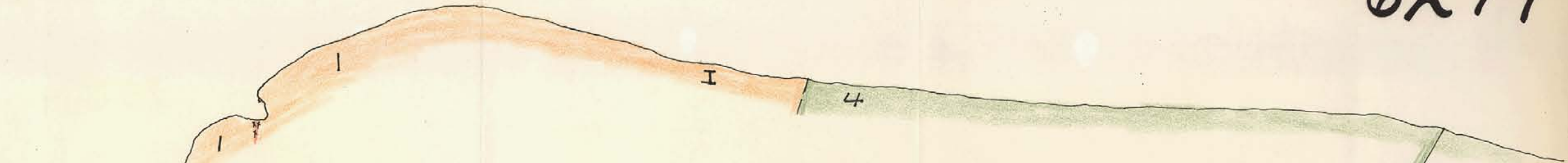
HOKO EXPLORATION LTD.  
 LYTTON AREA  
 KAMLOOPS M.D.  
**WORK AREA MAP**  
 1 Cm = 20 M. MAR. 1977 G.L.L.



*Geoffrey W. Hoko*

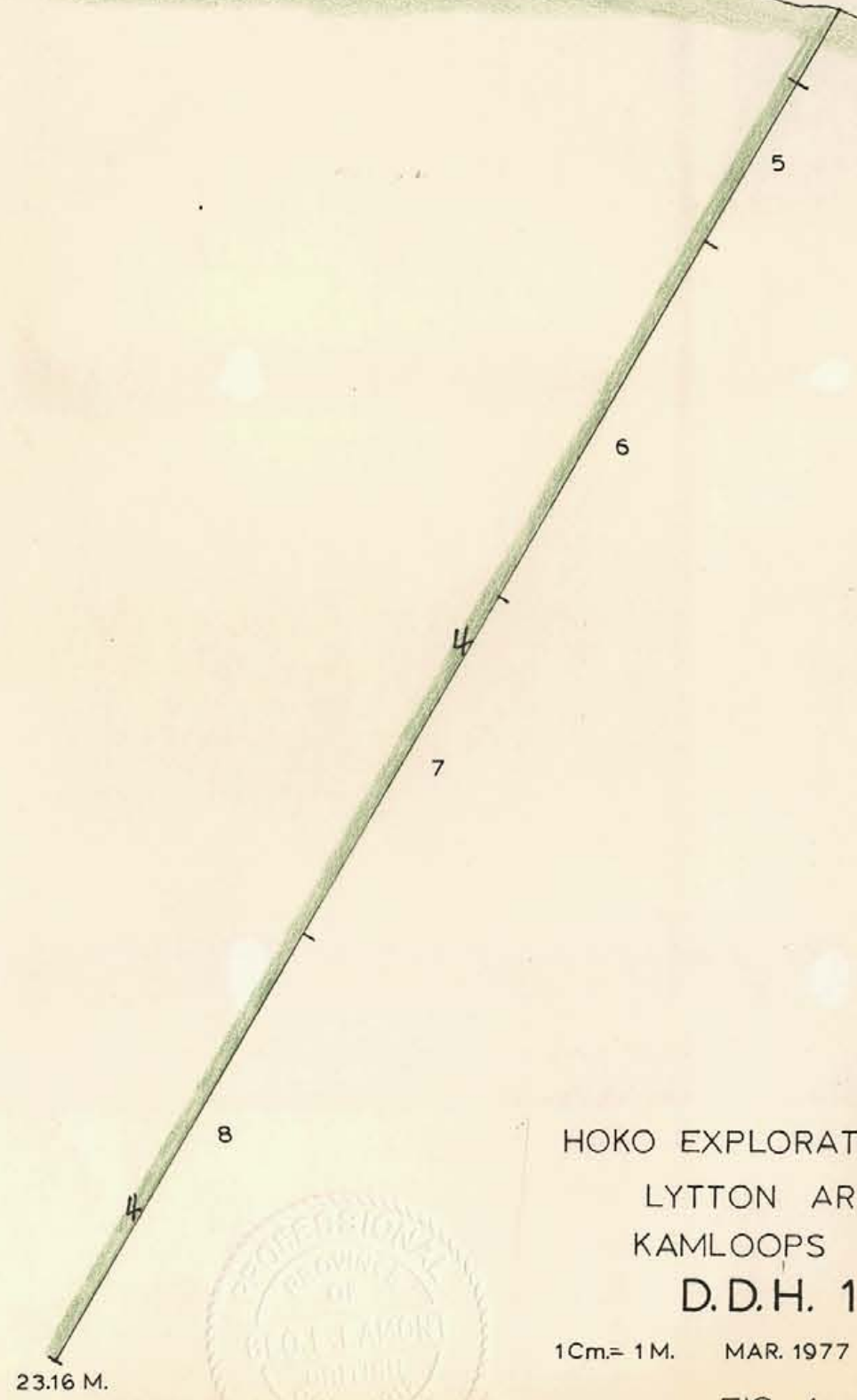
FIG. 3

6294



ASSAYS

SPLE. No	INTERVAL	%	
		CU.	ZN.
11495	1.22-3.96M.	0.01	0.03
6	- 10.06 "	0.02	0.03
7	- 15.85 "	0.01	0.02
8	- 23.16 "	0.01	0.02



HOKO EXPLORATION LTD.  
 LYTTON AREA  
 KAMLOOPS M.D.  
**D.D.H. 1**  
 1Cm= 1M. MAR. 1977 G.L.L.



*J. G. H. H.*

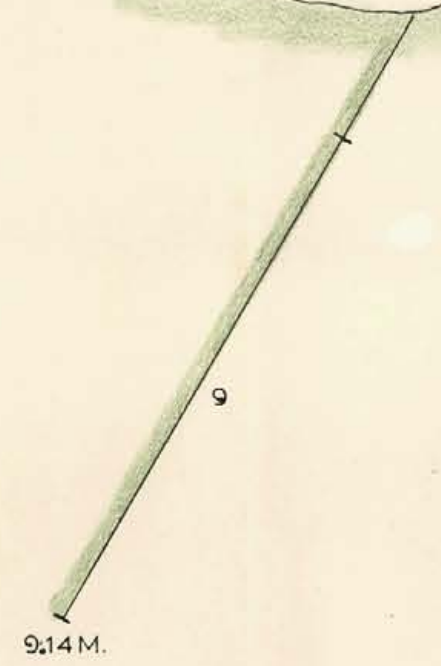
FIG. 4



6294



SPLE. No	INTERVAL	%	
		CU.	ZN.
11499	1.83-9.14 M.	0.01	0.03



HOKO EXPLORATION LTD.  
LYTTON AREA  
KAMLOOPS M.D.

D.D.H. 2

1 Cm. = 1 M. MAR. 1977 G.L.L.

FIG. 5

*John Stewart*

## DIAMOND DRILL RECORD

HOKO EXPLORATION LTD.

IZMAN CK. LYTTON AREA

Began Sept. 20/76  
 Comp<sup>d</sup>: Oct. 7/76  
 Claim Bob # 2  
 Core size 1AX.

D.D.H. # 1

Total depth 23.16 M.  
 Co-ord<sup>s</sup>: 1083 N, 1286 E  
 Elev. 5+20' (1652 M.) approx.  
 Bearing S 55° W @ - 60°

DEPTH	CORE LOG.	SAMPLE NO	INTERVAL	ASSAYS	
0 - 1.22 M.	Overburden		(Metres)	Cu %	Zn %
1.22 - 23.16 M	<p>Granodiorite, porphyritic - pinkish grey to dark grey, fine to medium crystalline matrix with feldspar phenocrysts up to 7 mm.; highly fractured and broken throughout; numerous open fractures with rusty brown weathering; generally a high loss of core throughout section. A few milky white quartz stringers throughout, barren of mineralization</p> <p>Sparse sulphide mineralization, finely disseminated in matrix and on a few fracture surfaces, - pyrite, pyrrhotite, rare traces of chalcopyrite and bornite (?).</p> <p>Core barrel jammed continually due to highly broken bedrock; progress too slow, hole abandoned @ 23.16 M.</p> <p style="text-align: center;"><i>John Lambert</i></p>	<p>11495</p> <p>6</p> <p>7</p> <p>8</p>	<p>1.22 - 3.96</p> <p>3.96 - 10.06</p> <p>10.06 - 15.85</p> <p>15.85 - 23.16</p>	<p>0.01</p> <p>0.02</p> <p>0.01</p> <p>0.01</p>	<p>0.03</p> <p>0.03</p> <p>0.02</p> <p>0.02</p>

## DIAMOND DRILL RECORD

HOKO EXPLORATION LTD.

IZMAN CK. LYTTON AREA

Began Oct. 9/76  
 Compt'd Oct 11/76  
 Claim Bob # 3  
 Core size 1AX

D. D. H. #2

Total depth 9.14 M.  
 Co-ords 1063 N. 1342 E  
 Elev. 5405 (1647 M) approx.  
 Drilling S 40° W @ -60°

DEPTH	CORE LOG.	SAMPLE NO	INTERVAL	ASSAYS	
0 - 1.83 M.	Overburden			Cu %	Zn %
1.83 - 9.14 M.	<p>Granodiorite, porphyritic - very similar to that of DDH #1; feldspar phenocrysts in a medium crystalline matrix; very sparse sulphide mineralization disseminated through matrix.</p> <p>Bedrock highly fractured and broken causing continual jamming of core barrel; twisted off diamond bit and reaming shell in hole.</p> <p>Hole abandoned at 9.14 M.</p> <p style="text-align: center;"><i>Jes. J. Stewart</i></p>	11499	1.83 - 9.14 M.	0.01	0.03



# GENERAL TESTING LABORATORIES

DIVISION SUPERINTENDENCE COMPANY (CANADA) LTD.

1001 EAST PENDER ST., VANCOUVER, B.C., CANADA, V6A 1W2  
 PHONE (604) 254-1647 TELEX 04-507514 CABLE SUPERVISE

TO:  
 HOKO MINES LTD.  
 700 W. Georgia  
 P.O. Box 10054  
 Vancouver, B.C.

## CERTIFICATE OF ASSAY


No.: 7610-2253      DATE: Oct. 29/76

We hereby certify that the following are the results of assays on: **DDC**

MARKED	<del>XXXXXXXX</del> GOLD	<del>XXXXXXXX</del> SILVER	Copper	Zinc	<del>XXXXX</del>	<del>XXXXX</del>	<del>XXXXX</del>	<del>XXXXX</del>
	OZ/ST GR/MT	OZ/ST GR/MT	Cu (%)	Zn (%)				
11495			0.01	0.03				
11496			0.02	0.03				
11497			0.01	0.02				
11498			0.01	0.02				
11499			0.01	0.03				

NOTE: REJECTS RETAINED ONE MONTH. PULPS RETAINED THREE MONTHS. ON REQUEST PULPS AND REJECTS WILL BE STORED FOR A MAXIMUM OF ONE YEAR.

ALL REPORTS ARE THE CONFIDENTIAL PROPERTY OF CLIENTS. PUBLICATION OF STATEMENTS, CONCLUSION OR EXTRACTS FROM OR REGARDING OUR REPORTS IS NOT PERMITTED WITHOUT OUR WRITTEN APPROVAL. ANY LIABILITY ATTACHED THERETO IS LIMITED TO THE FEE CHARGED.

  
**L. WONG**  
 PROVINCIAL ASSAYER

**COPY**

Analytical and Consulting Chemists, Bulk Cargo Specialists, Surveyors, Inspectors, Samplers, Weighers

MEMBER: American Society For Testing Materials • The American Oil Chemists' Society • Canadian Testing Association  
 REFEREE AND OR OFFICIAL CHEMISTS FOR: Vancouver Merchants Exchange • National Institute Of Oilseed Products • The American Oil Chemists' Society  
 OFFICIAL WEIGHMASTERS FOR: Vancouver Board Of Trade • Vancouver Merchants Exchange



# Wink International Exploration Drilling Ltd.

CONTRACTORS & CONSULTANTS

TELEPHONE: (604) 943-7224 — 271-7117  
CABLE: "WINKIE", DELTA, B.C., CANADA

—4814 DOGWOOD DRIVE  
—DELTA, B.C., CANADA

106B, 1251 No. 3 Road,  
RICHMOND, B. C. V7E 2S5

## AGREEMENT

THIS AGREEMENT made this 21st day of September, 1978

BETWEEN: BOND EXPLORATION LTD.,  
700 W. Georgia,  
VANCOUVER, B. C.

(hereinafter referred to as the "COMPANY")

AND WINK INTERNATIONAL EXPLORATION DRILLING LTD.,  
106B, 1251 No. 3 Road,  
RICHMOND, B. C.

(hereinafter referred to as the "Contractor")

WHEREAS the COMPANY hereby requests that the CONTRACTOR carry out certain diamond drilling and related services on its property in the vicinity of LYTON, British Columbia.

AND WHEREAS the CONTRACTOR agrees to perform the said diamond drilling and other services under the terms and conditions hereinafter contained.

### 1. SCOPE OF WORK:

The work is to consist of drill holes drilled at locations specified by the COMPANY. Drilling depths are not to exceed the drilling capacity of the machine for these types of rock formations encountered. A total minimum footage of 500 feet is agreed to but this total may be extended by mutual consent.

No drill holes shall be drilled at angles flatter than 45 degrees to the horizontal. All drilling measurements will be taken from the top of casing.

The light weight alloy used in the fabrication of Winkie drill rods will not allow the use of salt, brines or harsh chemicals in drilling water.

### 2. COMMENCEMENT AND EXECUTION OF WORK:

The work shall commence on or about the 23rd day of September, 1978 and be carried out on a one shift per day basis, operating seven days per week.

### 3. THE CONTRACTOR HEREBY COVENANTS AND AGREES:

- (a) To provide all of the required equipment including but not limited to: one Winkie drill and equipment including diamond set stones to drill from surface to the drilling depth capacity of the machine for those types of rock formations encountered, to recover core of 1-3/8 inch diameter.
- (b) To provide one supply and one pressure pump.
- (c) That all its labour, diamond wear and loss, and all other operating expenses, except as hereinafter provided, shall be at its own cost and expense and for its own account.
- (d) To provide a drilling crew consisting of one driller and one helper per daily drilling shift of eight hours.
- (e) That the drilling crews will follow good drilling practice and shall use care and diligence to recover as high a percentage of core as the drilling conditions allow. All core will be placed in boxes supplied by the COMPANY.
- (f) That it will be responsible for and pay all dues and assessments payable under the Workmen's Compensation Act, or other similar Acts, whether Federal or Provincial thereof.
- (g) That it will carry, and will show proof prior to commencement of work, Third Party Liability Insurance, legal liability for bodily injury to or death of any person or for damage to property in the amount of \$500,000.00.
- (h) That the CONTRACTOR or its employees will not give out any information regarding drill results or permit persons other than the COMPANY'S representatives access to the core. It is agreed that the content of this agreement shall remain confidential.
- (i) That, during the course of the work, the CONTRACTOR shall at all times keep the COMPANY'S premises and drill sites free from waste or rubbish and on completion of work will remove all materials and leave the sites in clean condition.

### 4. THE COMPANY HEREBY COVENANTS AND AGREES:

- (a) That if cavities or loose ground or other conditions be encountered such that further drilling becomes impractical, the hole may be abandoned by mutual consent and the CONTRACTOR be paid for all footage completed.
- (b) That transportation of all the CONTRACTOR'S men and equipment from VANCOUVER to the property and return to VANCOUVER and for helicopter service for moves between drill sites shall be for the COMPANY'S account at no cost to the CONTRACTOR.
- (c) To provide and pay for, at no cost to the CONTRACTOR, all camp accommodation and board for the drill crew on the property.

- (d) To provide and pay for, at no cost to the CONTRACTOR, water, the services of one 4 x 4 truck to be used in the haulage thereof for drilling operations and any related costs.

5. THE COMPANY HEREBY COVENANTS AND AGREES:

TO PAY THE CONTRACTOR FOR FOOTAGE DRILLING OR OTHER SERVICES PERFORMED AS FOLLOWS:

- (a) Diamond drilling to a depth in each hole recovering 1 3/8 inch diameter core at the rate of \$7.60 per lineal foot drilled, plus,
- (b) The sum of \$135.00 per day per eight hour two man shift, commencing at the time the drill crew and equipment leave Vancouver and until the crew and equipment return to Vancouver.
- (c) The rate of \$15.00 per hour for each extra hour that the drill crew works beyond eight hours per day.
- (d) The cost of all fuels and lubricants and shipping of same to the drill sites.
- (e) For reaming at the rate of \$7.60 per foot reamed.
- (f) For penetration of overburden at the rate of \$7.60 per foot.
- (g) For drilling items left or lost in the hole, at cost.

6. PAYMENT:

The CONTRACTOR shall invoice the COMPANY at semi-monthly intervals for services provided and such invoices shall become due and payable within 15 days of receipt.

The COMPANY agrees, on signing this agreement, that it will advance to the CONTRACTOR the sum of \$8,500.00. This advance to be deducted from the final invoice.

\_\_\_\_\_  
HOKO EXPLORATION LTD.

  
\_\_\_\_\_  
WINK INTERNATIONAL EXPLORATION DRILLING LTD.



# Wink International Exploration Drilling Ltd.

6294

EXPLORATION DRILLING · CONSULTING · HYDRA-WINK SALES

TELEPHONE: (604) 271-7117

105B - 12511 No. 2 ROAD  
RICHMOND, B.C., CANADA V7E 2G3

October 27, 1976.

## INVOICE

Hoko Exploration Ltd.,  
700 West Georgia,  
VANCOUVER, B. C.

LYTTON, B. C. DRILLING PROJECT - SEPTEMBER 27 - OCTOBER 13, 1976.

15 8 Hr. Machine Days @ \$135.00		\$ 2,025.00
(Note: Did not charge re October 5 - R. Bolduc left job 9 - Truck in for repairs)		
60 Hours in excess of 8 Hr. Machine Days @ \$15.00		900.00
Hole #1 LAX Coring - 76 ft. @ \$7.60 ft.		577.60
AW Casing - 20 ft. @ \$7.60 ft.		152.00
Drilling Cement 17 ft. @ \$7.60 ft.		129.20
#2 AW Casing - 10 ft. @ \$7.60 ft. (Oct. 8/76)		76.00
LAX Coring - 30 ft. @ \$7.60 ft.		228.00
AW Casing - 30 ft. @ \$7.60 ft.		228.00
Minimum Footage Clause	500 ft.	
Less Drilled	106 ft.	
	<u>394 ft. @ \$7.60</u>	2,994.40
Down Hole Losses		
Oct. 11 - 1 only reaming shell		158.20
1 only LAX 100 Series Diamond Lit		123.40
Truck Rental - see attached		403.50
Burnsh-Castrol - Oil - see attached		48.78
E. G. Whalley & Son - Core Boxes - see attached		62.06
Expense Reports - R. Bolduc - see attached		93.06
R. Bergeron - see attached		15.90
Shipping Charges - Greyhound Lines Oct. 1 \$E781.00 - see attached		3.60
- J. K. Smit - Oct. 1 - see attached		2.50
		<u>\$ 8,221.20</u>
Less Received on Account		<u>2,500.00</u>
		<u>\$ 5,721.20</u>



# KERPAN & DELFS LTD.

BOX 742 - KAMLOOPS, B.C.

INVOICE

No 00737

Phone: 374-1788

TO: Hoku Exploration Ltd.

Box 10084

Pacific Centre

760 West Georgia St. Vancouver

EQUIPMENT TRUCK - WATER RATE As per LOCATION Lytton Area

DATE	PARTICULARS	AMOUNT	BALANCE
	Supply 4x4 truck with water tank for drill machines plus driver, Lytton site.		
Sept 28 <sup>th</sup> - Oct 12/76.	as per agreement (George Lambert)	\$1500 <del>XX</del>	
OCT 15/76.	<p style="text-align: right;">1500.00 386.25</p> <hr/> <p>Total: @ 1,113.75</p> <p style="text-align: right;">Paid: NOV 5/76</p>		
	Total -		\$1500 <del>XX</del>

MO.	DAY	REFERENCE	DESCRIPTION	AMOUNT
			BALANCE FORWARD	137.36
10	07	7939	PURCHASE	36.64
11			SERVICE CHARGE	2.06
<p>Date <u>Dec 4/76</u></p> <p><b>PAID</b></p> <p>Cheque No. <u>414</u></p>				



A LATE PAYMENT CHARGE OF

1.50 % PER MONTH ( 18.0% PER YEAR), COMPOUNDED MONTHLY WILL BE APPLIED ON ANY BALANCE UNPAID 25 DAYS FROM DATE OF MONTHLY STATEMENT.

PLEASE KEEP THIS SECTION FOR YOUR RECORDS.

NEW BALANCE

176.06

IF ACCOUNT HAS BEEN RECENTLY PAID, PLEASE DISREGARD THIS STATEMENT.

800-2674

KINGSWAY  
856 KINGSWAY  
879-9331

VANCOUVER DOWNTOWN  
404 WEST GEORGIA STREET  
885 0518

RICHMOND  
378 NUMBER 3 ROAD  
270-5508



rent-a-truck

RENTING OFFICE

R.A. NUMBER

CALLED BY

YEAR

4503 350 027 795  
 0000 BUS  
 RENTER: ALJGE U. VANHOVE S. G. 16  
 RESIDENCE: 1245 RENEUVEDO AVE  
 CITY: BENTWOOD ALB. S621  
 1228284 EXPIRATION: 1780 PROV. B.C.  
 COMPANY: LOKO EXPLORATION  
 ADDRESS: 700 W. GEORGIA  
 CITY: VAN. PROVINCE: B.C. PHONE NO.: 250-2504

	AMOUNT	RECEIPT NO.	BRANCH OFFICE
ADVANCE DEPOSIT	\$		
DEPOSIT	\$ CHK. 500 <sup>00</sup>		
EXTEND TO	\$		

CITY: VAN. PROV.: B.C. PHONE NO.: 250-2504

FULL COLLISION COVERAGE:  \$100.00 LIABILITY  
 BY SIGNING, CUSTOMER AGREES TO PAY BUDGET FOR ALL LOSS OR DAMAGE TO VEHICLE INCLUDING LOSS OF RENTAL CHARGES, LOSS OF USE, LOSS OF TIME AND LOSS OF FREIGHT. DAMAGE TO OTHER VEHICLES IS COVERED UP TO THE LIMIT OF \$100.00 PER ACCIDENT. DAMAGE TO OTHER VEHICLES IS COVERED UP TO THE LIMIT OF \$100.00 PER ACCIDENT. DAMAGE TO OTHER VEHICLES IS COVERED UP TO THE LIMIT OF \$100.00 PER ACCIDENT.

CUSTOMER SIGNATURE: [Signature] DATE: 2-00

DUE BACK BY: 2:00 A.M. PM. DAY OF: 16  
 AT ADDRESS: 856 KW. VAN.  
 CITY: VAN.

**NONE**

**NA SIR**

REPLACEMENT TRUCK

TRUCK NO.	
LICENSE NO.	
MAKE	
TIME IN	
TIME OUT	
MILEAGE IN	
MILEAGE OUT	
MILES DRIVEN	

ORIGINAL TRUCK

TRUCK NO.	75
LICENSE NO.	6124 BC
MAKE	4x4-P.61 Day
TIME IN	
TIME OUT	1st DEP.
MILEAGE IN	4890
MILEAGE OUT	3747
MILES DRIVEN	1143

TOWED VEHICLES ARE NOT COVERED BY BUDGET INSURANCE  
 SEE ITEMS 3F & 1B ON REVERSE SIDE HEREOF

1143	MILES	20	22860
2	DAYS	\$20 <sup>00</sup>	4000
2	HOURS	\$6 <sup>00</sup>	
2	WEEKS	\$120 <sup>00</sup>	24000

REMARKS: NEW DAMAGE

TOTAL TIME AND MILEAGE CHARGES	50860
LESS REFUND FOR	
SUB TOTAL	
DOLLY PER DAY	
BLANKETS PER DAY	
DROP	
TAILGATE	
OTHER	30625
SUB TOTAL	81485
SALES TAX 7%	5560
SUB TOTAL	87045
COLLISION PROTECTION DAILY	NO.
PERSONAL ACCIDENT INS. (N)	NO.
GAS	1015
TOTAL CHARGE	74060
LESS DEPOSITS	
NET DUE BUDGET	44060
NET DUE RENTER	
REFUNDED	
CHARGED	\$44060
PAID	
MAIL REFUND	
INITIAL	

KINGSWAY T-K 32236

RATES DO NOT INCLUDE GASOLINE

CONTRACT CLOSE SUBJECT TO FINAL AUDIT



STATEMENT

General Testing Laboratories

A Division of Superintendence Company (Canada) Ltd.

1001 East Pender Street, Vancouver, B.C. V6A 1W2

DATE		
YR.	MO.	DAY
76	10	31

HOKO MINES LTD.  
P.O. BOX 10084, 700 W. GEORGIA  
VANCOUVER B.C.

CUSTOMER ACCOUNT NO.  
H0078

2180

NET 30 DAYS - SERVICE CHARGE OF PER MONTH ON OVERDUE ACCOUNTS

DATE			REFERENCE	DESC. CODE	DEBIT	CREDIT	BALANCE
YEAR	MO.	DAY					
76	10	29	BALFWD 22342	INV	55.00		0.00
CURRENT			FAST DUE AMOUNTS				55.00
55.00			0.00		0.00	0.00	55.00
			OVER 30 DAYS		OVER 60 DAYS	OVER 90 DAYS	

Date Nov. 25, 76  
**PAID**  
Cheque No. 440 412

VANCOUVER BUSINESS FORMS LTD. 4 VBF

15575

DESCRIPTION CODES

BAL - BALANCE                      ADJ - ADJUSTMENT  
CRNT - CREDIT NOTE              INV - INVOICE  
NSP - NON SUFFICIENT FUNDS    CASH - CASH RECEIPT

**BALANCE OWING**

# Lytton Hotel

PHONE 455-2211

P.O. BOX 113

LYTTON, B.C.

*Nov 22/76*

*Noko Explorations Ltd.*

*Dear Sir:*

*acc past due 367.15*

Date

*PAID*

Cheque No.

*7012*

Date

*PAID*

Cheque No.

*409*

## STATEMENT

**LYTTON PINES MOTEL**

BOX 87,

PHONE 455-2322

LYTTON, B.C.

DATE Oct 13 19 76Hoko Exploration Ltd.Box 10084 Pacific Centre700 W. Georgia St. Van.

DATE	DETAILS	DEBIT	CREDIT	BALANCE
Sept 27	B. Lamont 15 rates (14.00 per rate)			210.00
Oct 2	B. Campbell 3 rates (14.00 per rate)			42.00
Oct 5	Campbell & Gradwell 1 rate (18.00)			18.00
Oct 6	B. Gradwell 6 rates at 14.00			84.00
Oct 5	R. Berggren & R. Braunerger (8 rates at 18.00 per rate)			144.00
				498.00
			Tax	24.90
				522.90
	Make (receipts attached)			310.20
				833.10

For  
B. [Signature]