

63/3

DIAMOND DRILLING REPORT

ON

THE 82M/3 BC GROUP

OF

CRAIGMONT MINES LIMITED

ON

THE ADAMS PLATEAU

BY

N. B. VOLLO, P. ENG.,

JUNE 24th, 1977

MINERAL RESOURCES BRANCH
ASSESSMENT REPORT

NO. _____

DIAMOND DRILLING REPORT

PROPERTY

82M/3 BC GROUP
ADAMS PLATEAU, B.C.

CLAIMS

ZINC 1-6, BC-1, BC-2, BC-3

COST

136 metres BQ Diamond Drilling at \$32.80/metre ----- \$4570

CONTRACTOR

H. Allan Diamond Drilling Ltd.,
MERRITT, B.C.

CONTENTS

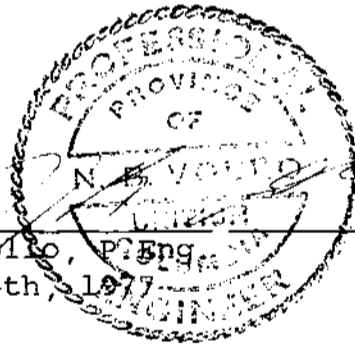
Drill log, BC-1
Drill Plan, 1:5000
Location Map, 1:250,000

CORE STORAGE

On property

LOGGED BY

N.B. Volko, P.Eng.
June 24th, 1977



Map #1

GROUP CLAIM MAP

CRAIGMONT MINES LIMITED

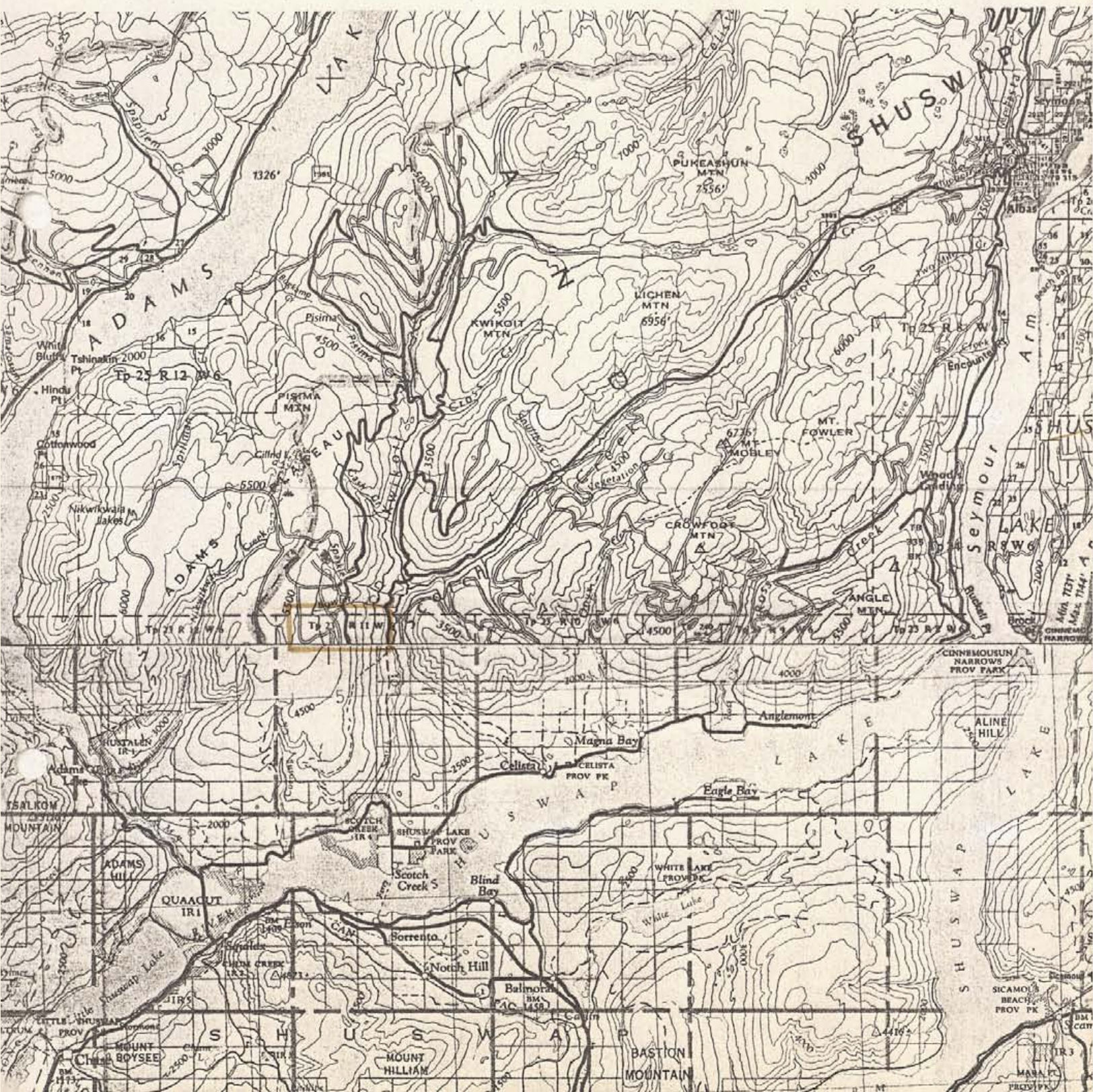
LOCATION MAP

82M/3 BC GROUP

1:250,000

June 24th, 1977

#6313

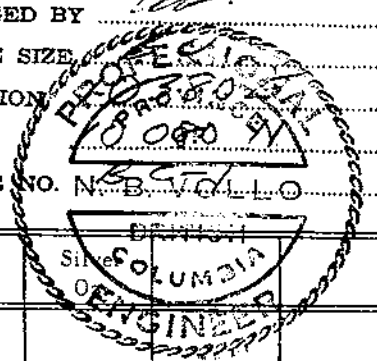


DIAMOND DRILL CORE LOG - SAMPLE RECORD

DEPTH	DIP	BEARING AST.
COLLAR	-55°	S 35°E

PROPERTY 824/B BC CLAIM Zinc
 LATITUDE STARTED June 14 1977
 DEPARTURE FINISHED June 22 1977
 ELEVATION 1475 TOTAL LENGTH 136.0

LOGGED BY JW
 CORE SIZE
 SECTION
 HOLE NO. N.B. V. 110



Footage <i>M.</i>	DESCRIPTION	MINERALIZATION	Sample	From	To	Length	Copper %	Mo %	Gold Oz.	Silver
0	Tuff - Green, banded, with siliceous, chloritic and epidote rich bands - banding are showing at 70-80° CA - fairly abundant bands of hard pinkish mineral 25- some, but qtz is more centered bands or auger - indistinct contact is	1.7% P ₁ 2.7% P ₂ P ₀ some in bands								
47	Andesite - Dark green, fine to medium grained, fairly uniform - patchy epidote 50- some, light green,									

DIAMOND DRILL CORE LOG -- SAMPLE RECORD

 PROPERTY 8217/3 BC

 HOLE No. 55-1 Page No. 2

	DESCRIPTION	MINERALIZATION	Sample	From	To	Length	Copper %	Mo %	Gold Oz.	Silver Oz.		
	more siliceous, possibly a chertiferous tuff											
	54 - brown duct green, highly chloritic, though still with 20% chert 9/12	20% Po P ₂ Cp in massive bands to 30 cm.	1082	54	56	2						
	56 - Duct green, fine, highly chloritic, possibly an andesite fragments	5% Po P ₂ Cp										
	60 - Same - banded at 75' - some magnetite	10-15% Po P ₂ Cp mag	1083	60	63	3						
	or also patches of epidote	20% Po Cp P ₂ Mo	1084	63	66	3						
66	Tuff (?) Green, fairly well banded or sheared 70' - highly chloritic	5-10% Po Mo Cp Mag. 11 in bands to 3 mm										
	69 - more massive, possibly andesite.	5-10% Po P ₂ Cp										
	77 - well banded 80' CA,	1-2% P ₂ P ₂										

DIAMOND DRILL CORE LOG -- SAMPLE RECORD

PROPERTY 827/3 BC

HOLE No. BC-1 Page No. 3

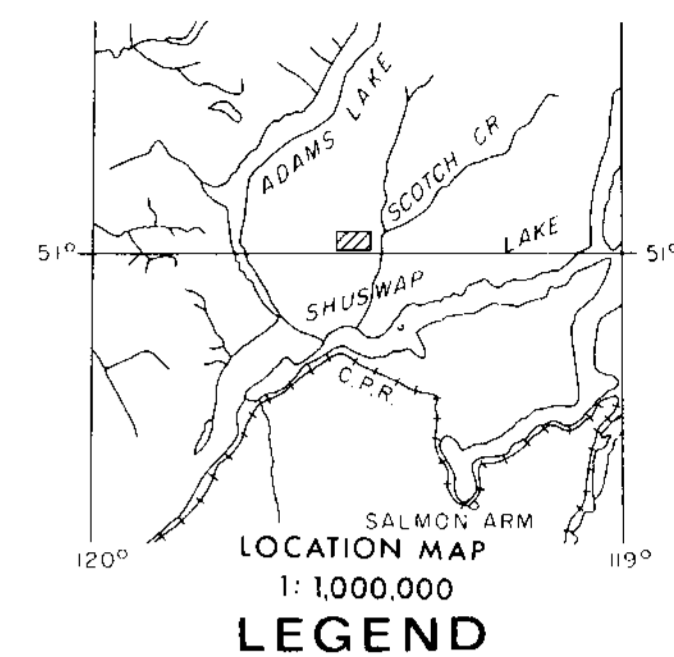
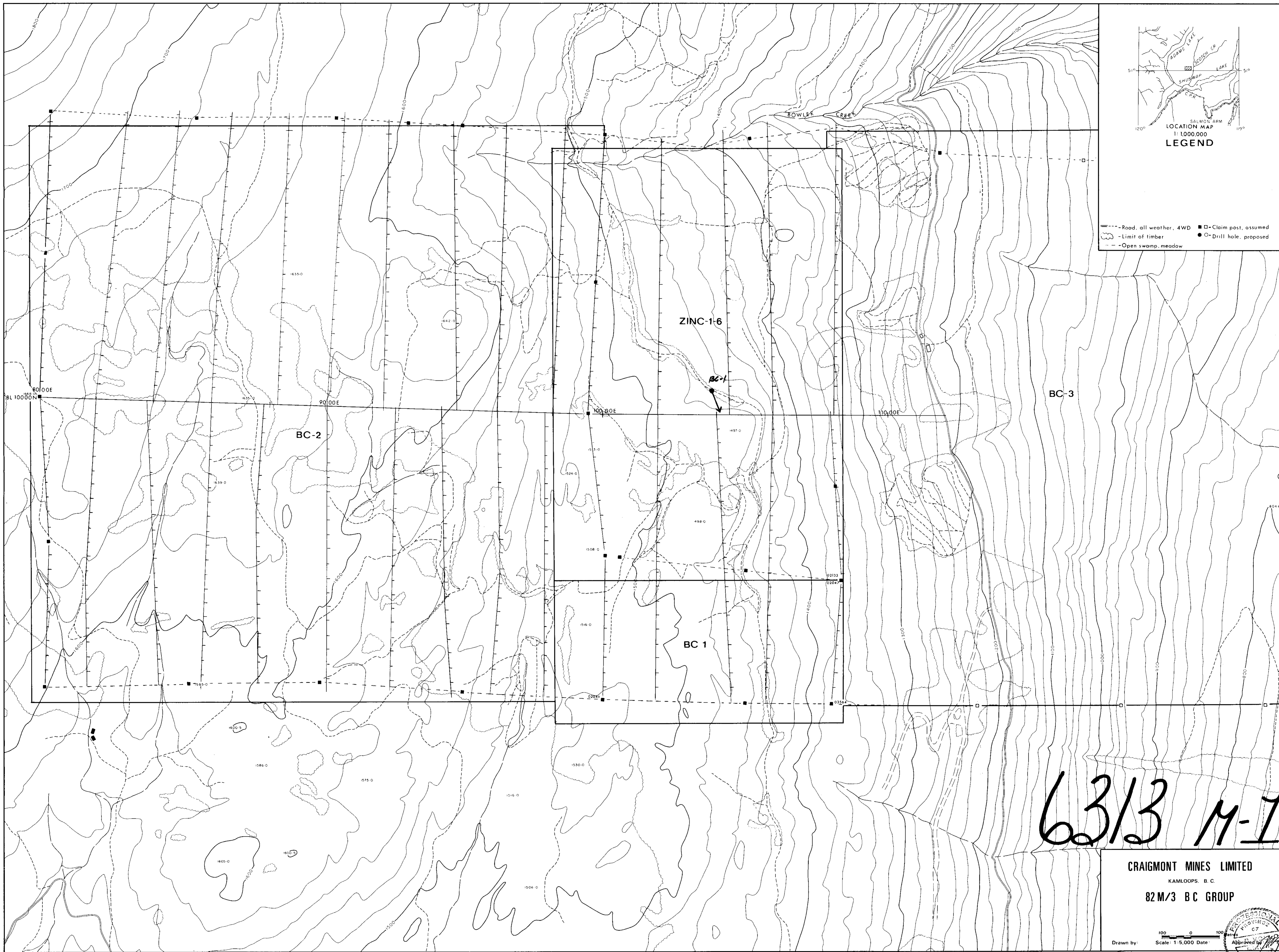
Footage	DESCRIPTION	MINERALIZATION	Sample	From	To	Length	Copper %	Mo %	Gold Oz.	Silver Oz.
	with 5-10 1/2 g/2 carb.									
	8 trgs.									
	1.3 m 80% white									
	g/2 calcite at 77.3									
	82- more massive,	2-3% Pb, Ag								
	dark green, still with									
	some banded sections									
91	Tuffite - grey, siliceous,	Spurs Sp								
	well bedded 80°, with									
	abundant zirconite, epidote,									
	biotite and mg chlorite									
96.6	Tuff. Green, sheared	1-2% Pb Ag								
	80°, banded, with									
	sections of tuffite									
	Highly silicified									
	103- becomes more									
	uniform, green, with									
	brownish bands, well									
	bedded 80° CA;									

DIAMOND DRILL CORE LOG -- SAMPLE RECORD

PROPERTY 82413 BC

HOLE No. BC-1 Page No. 4

Footage	DESCRIPTION	MINERALIZATION	Sample	From	To	Length	Copper %	Mo %	Gold Oz.	Silver Oz.
120 -	Some, but mut slid along 80° bedding - rock appears to be a rhyolitic tuff.	1-2% P7								
136	End									



- Road, all weather, 4WD
- - - Limit of timber
- - - Open swamp, meadow
- Claim post, assumed
- Drill hole, proposed

6313 M-1

CRAIGMONT MINES LIMITED
KAMLOOPS, B. C.
82 M/3 BC GROUP

Drawn by: _____ Scale: 1:5,000 Date: _____

