

6401

DRILLING ASSESSMENT REPORT

on the

VEGA CREEK PROPERTY

BEG Claims 104,105,106

Owned and Operated by

BP MINERALS LIMITED

Omineca Mining Division

NTS 94C3

Located approximately 6 kilometres
NNW of Uslika Lake, B.C.

Long. $125^{\circ}20'$, Lat. $56^{\circ}08'$

MINERAL RESOURCES BRANCH
ASSESSMENT REPORT

NO. _____



D.K. Mustard

C.D.S. Bates

August, 1977



APPENDIX I
Drill Contract

TABLE OF CONTENTS

	Page
SUMMARY	1
LOCATION AND ACCESS	2
TRACE METAL ANALYSIS	5
DISCUSSION AND RESULTS	6
STATEMENT OF COSTS	8
APPORTIONMENT	9
APPENDIX I Drill Contract	10
APPENDIX II Invoices	12
APPENDIX III Statement of Qualifications	13

TABLE OF FIGURES

PROPERTY LOCATION MAP - BEG CLAIMS	Figure 1	3
BEG CLAIM MAP AND DRILL HOLE LOCATION	2	4
BEG GROUP 5 - DEEP OVERBURDEN SAMPLES	3	7

SUMMARY

During the period 26 May, 1977 to 27 May, 1977 nine sample sites were drilled with an overburden drill within the area covered by the contiguous BEG claims 104, 105 and 106 totalling 3 claims and 9 units.

The overburden sampling method involves the use of a light, portable, gasoline-operated drill. A piston-type stainless steel sampler, with retractable point is attached to a series of steel rods which are driven through the overburden to the desired depth. The point is then retracted by turning the string of rods on surface which leaves the bottom of the sample tube open. The sampler is then driven into the material to be sampled for eight inches. The rods and the sampler are then extracted from the hole using a 5-ton vertical lift jack. Once extracted the sampler is broken down with pipe wrenches and the sample is placed in appropriately marked Kraft bags. At the Vega Creek property samples were collected at the overburden-bedrock interface. If some doubt existed concerning the critical interface one or more additional holes were drilled to ascertain the depth to bedrock.

The contractor was Bema Industries Ltd. of 19790 - 88th Avenue, R.R. 4, Langley, B.C. V3A 4P7 (contract attached).

Personnel: Bema Industries Ltd. - 2 operators
BP Minerals Limited - R.E.W. Lett, geochemist
- I. Cameron, assistant

Drill samples were shipped to Vancouver to Acme Analytical Laboratories Ltd., 6455 Laurel Street, Burnaby, B.C. V5B 3B4.

Samples were gently disaggregated and passed onto an eighthy-mesh screen. Analysis for Cu of both the plus 80-mesh and minus 80-mesh was undertaken. (Results listed).

All drill holes were vertical.

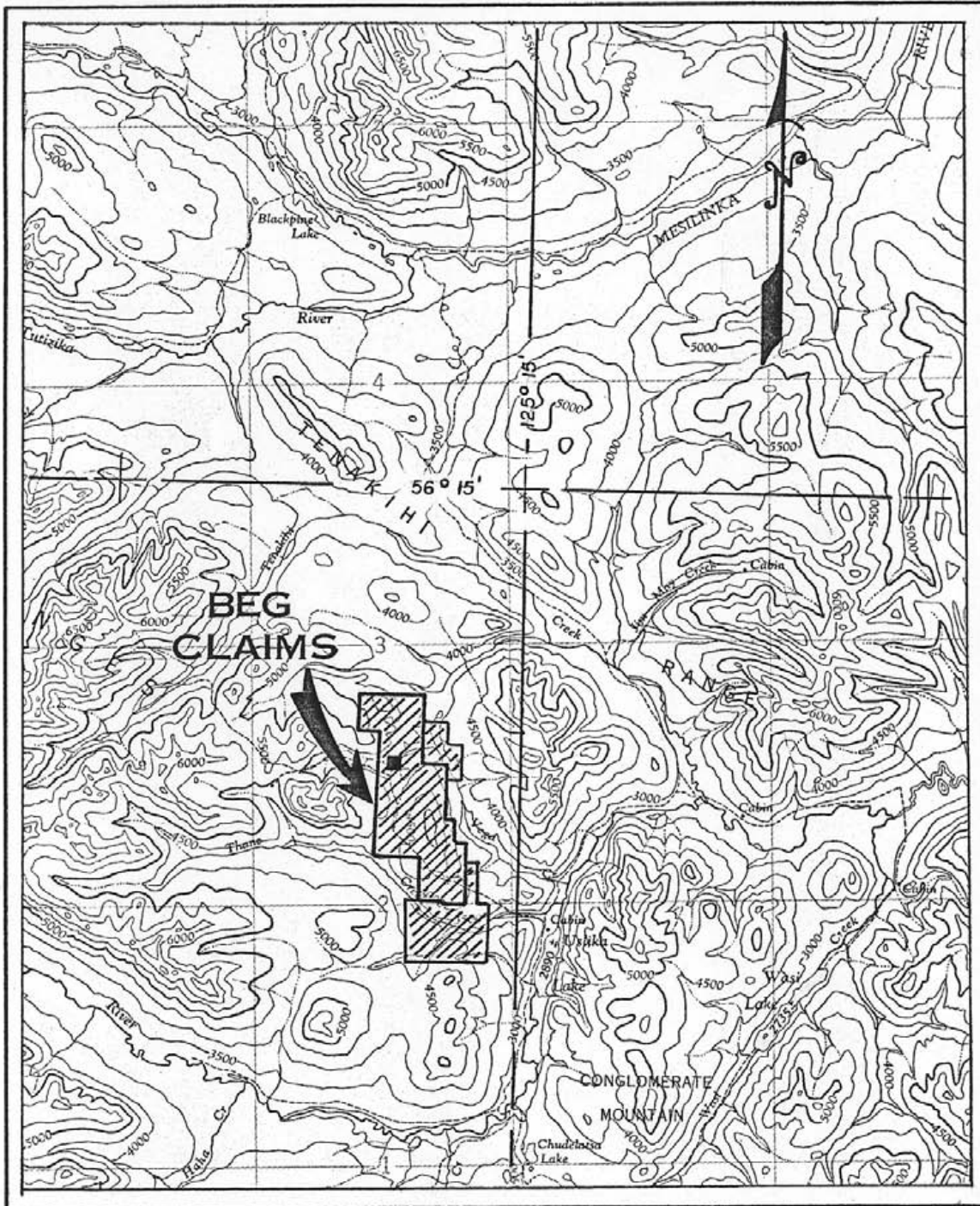
Drill samples are stored with BP Minerals Limited in Vancouver.

Drill site elevations are between 3750 feet (1134 m) and 4050 feet (1234 m). Samples were collected at 400-foot (120 m) intervals along 3 east-west lines spaced 400 feet (120 m) apart (Figure 3).

LOCATION AND ACCESS (Figures 1 and 2)

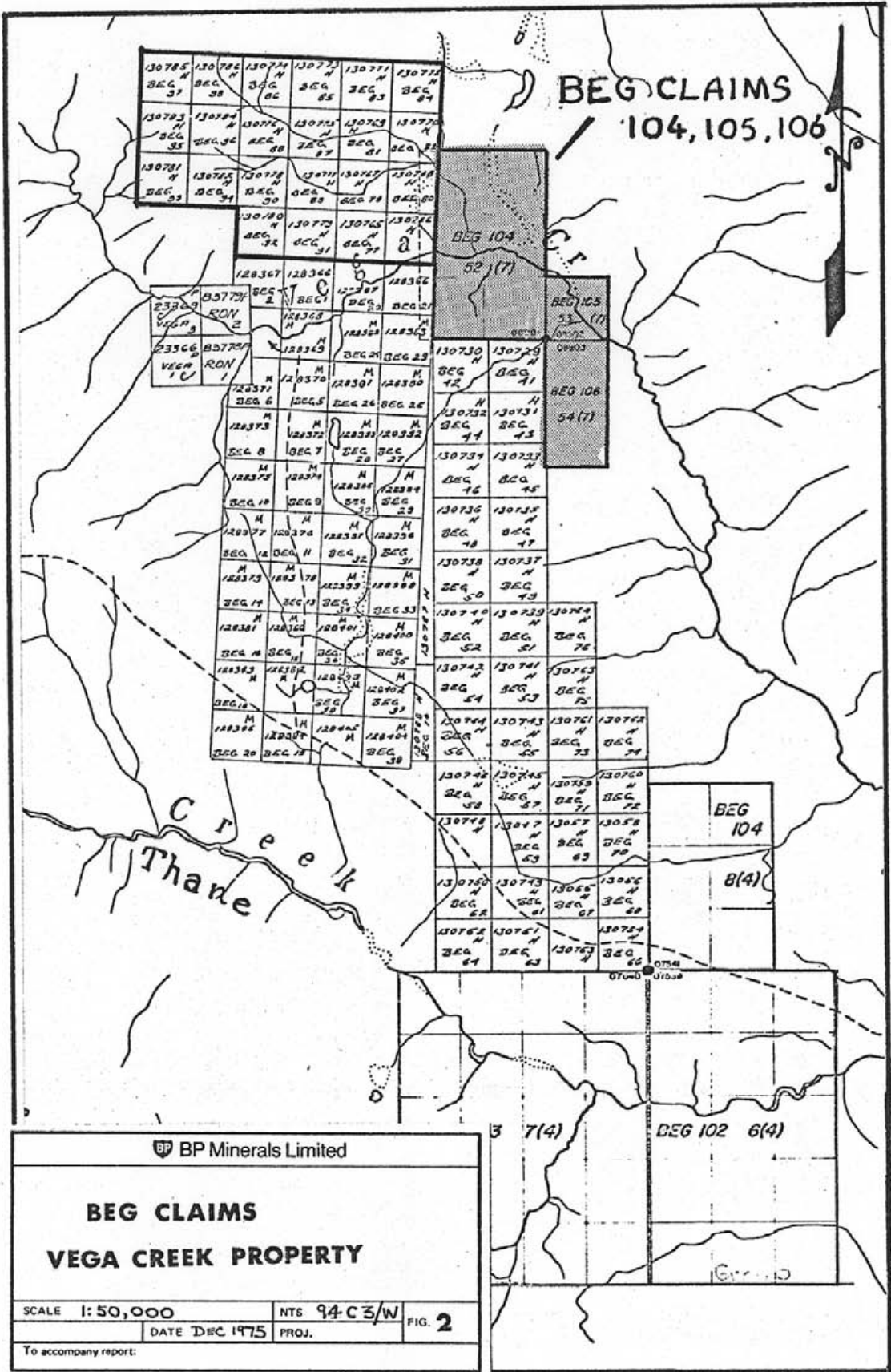
The BEG 104 to 106 claims are situated in the Omineca Mining Division, approximately 6 miles (9.6 km) NNW of Uslika Lake, B.C.

Access to the property is by helicopter from Uslika Lake which is located on the Omineca Highway from Fort St. James. Access can also be gained by foot along a well-established trail from Uslika Lake.



■ RON Claims

Figure 1
 LOCATION MAP
 BEG CLAIMS
 VEGA CREEK; OMINECA MINING DIVISION, B.C.
 N.T.S. 94C3
 SCALE: 1 INCH = 4 MILES



TRACE METAL ANALYSIS

Oven dried overburden samples were sieved through an 80-mesh sized screen before analysis. The plus 80-mesh fraction was pulverized in a shatter box. Portions of the minus 80-mesh and plus 80-mesh sized fractions were digested in hot aqua regia and the Cu concentration was determined by atomic absorption spectrometry. The following report by Acme Analytical Laboratories Ltd. outlines the procedure used to determine Cu in the deep overburden samples.

ACME ANALYTICAL LABORATORIES LTD.
ASSAYERS & CHEMISTS
6455 LAUREL STREET, BURNABY 2, B.C.
Telephone (604) 299-5242

Geochemical Analysis of Mo, Cu, Pb, Zn, Ag*, Ni, Co, Mn, Bi*, V, Fe, Cd* & Sb*

Sample preparation

Soil samples are dried at 75°C overnight and sieved to -80 mesh.

Rock samples are ground to 98% -100 mesh.

Digestion

A .50 gram sample is digested with diluted aqua regia in hot water bath for one hour and diluted to 10 mls with demineralized water.

Determination

All the above elements are determined by Atomic Absorption from the solution.

* With background correction

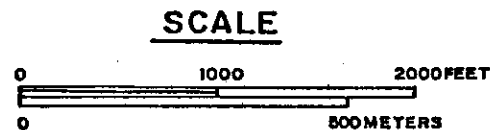
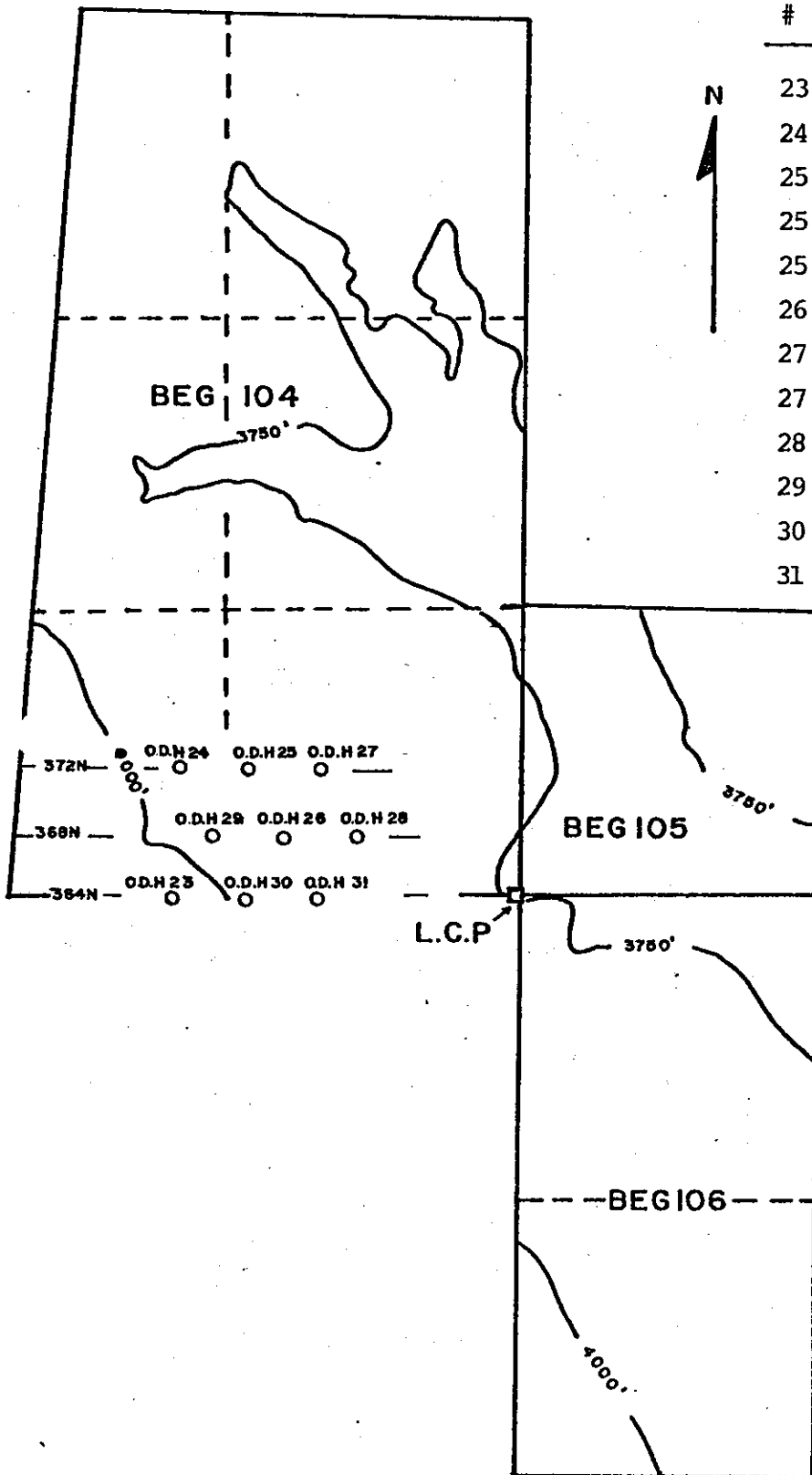
DISCUSSION AND RESULTS

Overburden drill hole locations, sample depths and Cu values for minus 80-mesh and plus 80-mesh fractions are shown in Figure 3. Volcanic rocks, cropping out within the claims are covered by a variable thickness of poorly sorted silt-clay ablation till that contains numerous subangular boulders. Resistance of the overburden to the sampling equipment suggests that most samples are of material from an unknown distance above the till bedrock interface.

The Cu content of the minus 80-mesh fraction is greater than in the plus 80-mesh fraction, indicating that Cu ions are released on weathering of silicate minerals and are absorbed to clay-sized material in the overburden. Cu values in 2 profiles (nos. 25 and 27), where several intermediate samples were collected, decrease with depth into the till. Values of less than 130 ppm in all profiles sampled at the bedrock-overburden interface indicate that there is probably not a mineralized source for the metal. Cu values probably reflect content in weathered material derived from volcanic bedrock.

Geochemical Results

Hole #	Sample # 77-23-	Depth Meters	PPM Cu -80m Fr	PPM Cu +80m Fr
23	-24	0.9	128	78
24	-25	1.5	112	74
25	-26	1.0	95	82
25	-27	1.7	84	66
25	-28	0.3	114	71
26	-29	2.6	108	80
27	-30	2.2	100	66
27	-31	3.2	86	62
28	-32	3.0	84	56
29	-33	0.5	96	84
30	-34	2.3	105	76
31	-35	2.3	94	58



BP Minerals Limited		
BEG GROUP 5		
DEEP OVERBURDEN SAMPLES		
SCALE 1" = 1000'	NTS 94C-3	FIG. 3
DATE AUGUST 77	PROJ. 505	
To accompany report:		

STATEMENT OF COSTS

1. Overburden Drilling - Direct Costs

Contractor - Bema Industries Ltd.

During the period May 23, 1977 to June 4, 1977 a total of 102 locations were drilled and 162 samples were collected (in a number of instances one or more holes were drilled at the same location) for a total \$4388 indirect drilling costs (117 man hours at the hourly contract rate \$37.50 - (see attached contract).

However during the period May 26, 1977 to May 27, 1977 nine locations were drilled (12 samples) which are within the area covered by BEG Group Five Claims (BEG 104, 105 and 106).

Direct drilling cost - 8.6 hrs x \$37.50 = \$325

2. Overburden Drilling - Indirect Costs

Helicopter mobilization and supply trips	
Jet Ranger 206B - total invoice cost \$2744	
BEG Group portion 7%	\$192
Vehicle rental (May 26, 27) \$10/day	20
Camp rental (May 26, 27) \$25/day	50
Food costs - 8 man days @ \$8/man day	64
	<u>\$326</u>

3. BP Minerals Limited - May 26, May 27, 1977

<u>Personnel</u> - R.E.W. Lett - 2 days @ \$86/day	\$172
- I. Cameron - 2 days @ \$53/day	<u>106</u>
	\$278

4. Analytical Cost

12 samples @ \$2.95/sample (+80 & -80 mesh)	\$35
---	------

5. Report Preparation

\$150

Total Costs

\$1114

APPORTIONMENT

I wish to apply \$1100 of this work to the claims
listed below: -

BEG 104(6 units) July 21-	1 year @ \$100 per c.o.w*	\$ 600
BEG 105(1 unit) July 21-	1 year @ \$100 per "	100
BEG 106(2 units) July 21-	2 years @ \$100 per "	<u>400</u>
		<u><u>\$1100</u></u>

* certificate of work


BEMA INDUSTRIES LTD.

19790-88 Ave. R.R.4
Langley, B.C. V3A4P7 530-7772

March 16, 1977

Mr. D. Mustard
B P Minerals Ltd.
1199 West Pender Street
Vancouver, B.C.

B P Minerals Limited
RECEIVED
MAR 17 1977

Dear Mr. Mustard,

Vancouver, B.C.

With reference to our meeting on March 2nd, 1977, in which we discussed your requirements for an overburden drill program for this year. It is our understanding you will require one overburden drill rig and crew, complete with camp and support equipment; this equipment will be needed from May 15th, 1977 to approximately July 1st, 1977. B P Minerals Ltd. will supply groceries as required and all air transportation on the job site.

An overburden rig will be supplied consisting of at least 50 meters of drill rod, one Atlas Copco plugger, a minimum of 6 sample bits and miscellaneous hardware. An inventory of parts and equipment will be maintained on the job site to ensure a continuous operation. The crew will consist of one driller and one helper. The hourly rate for the overburden rig is \$37.50; a bonus system has been set up of a \$1.50 per foot over an eight hour minimum of 80 sampled feet. For each additional hour worked over the eight hours in any one calendar day, 10 feet will be added to the eight hour minimum of 80 feet. All equipment lost down the hole because of ground conditions will be charged at cost to B P Minerals Ltd..

A complete camp for two men will be supplied at a rate of \$12.50 per day. A 3/4 ton pick up truck with canopy will be supplied at a rate of \$10.00 per day and 23¢ per mile.

**BEMA INDUSTRIES LTD.**

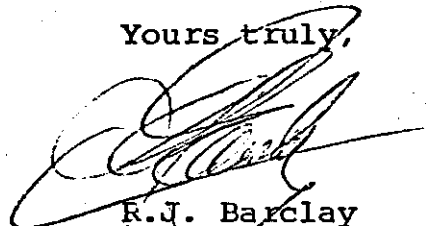
19790-88 Ave. R.R.4

Langley, B.C. V3A4P7 530-7772

Mobilization will be from Vancouver and a maximum charge of 8 hours per calendar day while travelling to the job site will be made.

If these conditions meet with your approval please advise us with a letter of confirmation. If you have any questions please contact either myself or Mike Beley and we will be pleased to answer them. Thankyou for this opportunity to be of service to you and your company.

Yours truly,


R.J. Barclay
Manager

APPENDIX II

Invoices



BEMA INDUSTRIES LTD.

19790-88 Ave. R.R.4
Langley, B.C. V3A4P7 530-7772

1 June 1977

BP Minerals Ltd.
Suite #405
1199 West Pender
Vancouver, B.C., V6E 2R1

BP Minerals Limited
RECEIVED
JUN 7 1977

Vancouver, B.C.

Re: Vega Project:

Wages:

123 hours x \$37.50/hour = \$4,612.50 \$4,612.50

Equipment:

1 small sampler @ \$155.25 155.25

1 rod & coupling @ \$20.00 20.00

Camp:

4-man camp @ \$25.00/dy. x 14 dys. = \$350.00 350.00

Vehicle:

Mileage - Gernansen 30,172
Vancouver-29,622

550miles x .23¢ = \$126.50 126.50

Vehicle 14 dys @ \$10.00/dy = \$140.00 140.00

Disbursements:

M.J.Beley - expenses - \$103.55

Telephone calls - 3.63

\$107.18 107.18

Service charge 15% 16.08

16.08

TOTAL \$5,527.51

This is our account
BEMA INDUSTRIES LTD.

Per:

J.E. Beley

APPROVED FOR PAYMENT
CHARGE 80031-440
DATE JUN. 17 1977 NTL

BEMA INDUSTRIES LTD.

S.P. Minerals Project

1 - - 15

EQUIPMENT DISTRIBUTION SHEET

FOREMAN... *M.J. Boley*

Date... *June 1st 77*

EQUIPMENT PERIOD 16...31

LOCATION *Vega Project*

APPROVED By... *[Signature]*

EQUIPMENT	1	2	3	4	5	6	7	8	9	10	11	12	13	14	15	TOTALS	
	16	17	18	19	20	21	22	23	24	25	26	27	28	29	30	31	
<i>SON V&T</i>				✓	✓	✓	✓	✓	✓	✓	✓	✓	✓	✓	✓	✓	14 days
<i>Power Cable</i>				✓	✓	✓	✓	✓	✓	✓	✓	✓	✓	✓	✓	✓	14 days
<i>OVER BURDEN /P.S.</i>				8	8	8	8	8	9½	9½	10	8	10	9	9	9	123 hours
<i>SAMPLING EQUIPMENT</i>																	
<i>SAMPLERS</i>										1 ^s							1s sampler
<i>OUND POINTS</i>																	
<i>ODS c/w COUPLINGS</i>										1							1 rods & couplings

Notes 23-31

APPENDIX III

Statement of Qualifications

STATEMENT OF QUALIFICATIONS

C.D.S. Bates - BA (Oxon), MA (Oxon), MSc, DIC.

- 1968 BA Oxford University
(Honours Degree Geology)
- 1970 MSc Royal School of Mines, Imperial College,
London University
(Mineral Exploration)
- 1970 DIC Royal School of Mines, Imperial College,
London University
(Mineral Exploration)
- 1975 MA Oxford University