

6405

✓

vic

SUMMARY REPORT

TO '77-#294-#6405

MR. ANDREW ROBERTSON

RE: ASSESSMENT DIAMOND DRILLING

PAR CLAIMS - ASPEN GROVE, B.C.

Vancouver, B.C.

August 29, 1977

C. J. Cryderman

MINERAL RESOURCES BRANCH
ASSESSMENT REPORT

NO. _____

BOX 11107, ROYAL CENTRE
1400-1055 WEST GEORGIA STREET
VANCOUVER, B. C. V6E 3P3

September 20, 1977

Mining Recorder
Nicola Mining Division
Government Building
Merritt, B.C.

Dear Sir:

Enclosed duplicate copies of summary report of exploratory diamond drilling carried out on the PAR Claims in the Nicola Mining Division being reported for assessment work. The core from this work is stored in the warehouse of Apex Equipment Company B.C. Limited, B-13571 Verdun Place, Richmond, B.C.

Also enclosed is original receipt for the cash paid in lieu of work for the year 1976. Application for refund of this cash to Mr. Andrew Robertson is made on the application to record work for 1977. Please address refund to:

Mr. Andrew Robertson
Box 11107, Royal Centre
1055 West Georgia Street
Vancouver, B.C.
V6E 3P3

The total sum expended is \$7,303.81 of which it is requested \$6,000.00 be applied to the years 1976, 1977 and 1978 on Claims No. PAR 1 to 8, 20 & 22. The value of \$1,000.00 work to be applied to PAR 4 to 8 to cover the year 1979.

Vouchers supporting these expenditures are attached.

Yours very truly,

ANDREW ROBERTSON


C. J. Cryderman

CJC:jc
Enclosures

*

STATEMENT / ÉTAT DE COMPTE

IN ACCOUNT WITH / EN COMPTE AVEC

INTERIOR DIAMOND DRILLING LTD.

R.R. 2, SUMMERLAND, B.C.

TO / A
 MR. ANDREW ROBERTSON,
 P.O. BOX 11107 ROYAL CENTRE
 SUITE 1400 - 1055 WEST GEORGIA STREET,
 VANCOUVER, B.C.

Terms / Conditions

Date AUGUST 8 1977

DIAMOND DRILLING			
PAR CLAIMS:			
①	MOVE IN RIG, EQUIPMENT AND TRAILER - SETUP TRAILER (AT FIELD COST)		
	12 HRS. @ \$30.00 / HR.		360.00
②	SET UP PUMP, WATERLINE AND RIG (RC: SHIFT REPORTS) (INCLUDING TEAR DOWN) MAN HOURS 58 HRS @ \$10.00 / HR.		580.00
	MACHINE HOURS 8 HRS @ \$10.00 / HR.		80.00
③	BQ DRILLING: 301 FT. @ \$15.00 / FT.		4515.00
④	CORE BOXES: 16 BOXES @ \$3.50 / BOX		56.00
⑤	MOVE BACK TO SUMMERLAND (AT FIELD COST)		
	4 HRS @ \$30.00 / HR.		120.00
			<u>5711.00</u>
		#318 12/77	
	THANK YOU		
	Donald Gray		
			AUG 11 1977

O.K. G.P.P.



BONDAR-CLEGG & COMPANY LTD.

764 BELFAST ROAD, OTTAWA, ONTARIO, K1G 0Z5 PHONE: 237-3110 TELEX: 053-3548

Andrew Robertson
1400 Royal Centre
1055 West Georgia Street
Vancouver, B.C.

INVOICE: A 4611
4611

DATE: Sept. 9, 1977

REPORT NO: A27 - 761

PROJECT:

W. O. No. B2358

2	Gold & Silver	Assays	@ \$ 8.50	<u>\$ 17.00</u>
---	---------------	--------	-----------	-----------------

sja

THIS IS A PROFESSIONAL SERVICE
ACCOUNTS DUE WHEN RENDERED

SEP 11 1977

Summary to:

Mr. Andrew Robertson

1400 - 1055 West Georgia Street, Vancouver, B.C. V6E 3P3

Re: Diamond Drilling of Hole No. B-1 for the purpose of further exploring the PAR CLAIMS and performing the assessment work on this claim group.

1. This diamond drill hole was started in November, 1975. The work was undertaken by Wink International Exploration Drilling Ltd. using a prototype all hydraulic drill. The power pack on this unit failed at 101 feet. It had been intended to drill this hole to a depth of 400' but the slow progress made the project too costly. Drilling was discontinued. The casing and shoe was left in the hole to facilitate re-setting on the hole to deepen it to target depth of 400 feet which had been the original intent.
2. The hole is designated B-1 as the start of a new series of holes. The hole is situated in an old bulldozer trench 135 feet S. 15° W. ast. of the N.E. corner of PAR claim No. 4. The hole was cased for 5 feet through glacial till and gossan. The first 5 feet of core recovered was weathered material containing some pyrite. The accompanying core log describes the rocks and mineralization encountered in the hole. All of the rock encountered in this hole from 5.0' to 100.0' is mineralized, all of which has been assayed and show the copper content, though low, to be very consistent; as is the silver.
3. During the period August 1st to 7th, hole B-1 was extended to 400' in depth. The drilling was carried out very efficiently by Interior Diamond Drilling of Summerland, B.C. Core recovery was excellent. In order to simplify and consolidate, the logs of the 1975 and 1977 drilling will be included as one continuous log in this summary.
4. The rocks and the mineralization encountered from 100 to 400 feet added little to that which was already known from previous drilling with the exception of an increased amount of MoS₂ between 300' and 400'.

While comparing the log of this hole with the logs of other holes from the previous drilling, it was noted that in a number of cases where such minerals as tetrahedrite, bornite and pyrite seen in the core it had not been assayed. This may be due to the fact that significant chalcopyrite had not been seen, but R. M. Thompson states in his report of petrographic study of drill core from some of these holes that chalcopyrite

occurs as sparse inclusions with some of the pyrite. This copper mineralization may not be discernible in a hand specimen of drill core; therefore, some of sections of carrying silver or copper values of interest may have been missed in the sampling of core from previous drilling.

Some of the silver values ranged up to 4.3 oz. per ton and copper content up to 2.8% are interesting and, more extensive sampling might have resulted in both better grades and better widths.

5. Hole B-1 is located at the north end of what is both the topographical, and the magnetic high determined from a magnetic survey done over the immediate area in 1962. It is also located near the southern end of a N-S trending tongue of Nicola volcanics which overlay the granodiorite and quartzites encountered in previous drilling. The magnetic mineralized zone as indicated, by C. Riley, P. Eng. in his report dated January, 1962 trends approximately 20° E. of N. from the area drilled to date and all drilling has been concentrated around the south end of the tongue of Nicola rocks. One hole #23 collared approximately 800 feet S. W. of the locus B-1, bearing N-W at an inclination of -45° may have been very near to the south boundary of the Nicola rocks and the result do not warrant further drilling on this end of the zone. It is recommended three or four vertical holes about 400' deep be drilled along strike of the mineralized zone to the N-E with a step out to the west if results warrant such.

Respectfully submitted,


C. J. Cryer

Vancouver, B.C.
August 29, 1977

STATEMENT OF QUALIFICATION

I, C. J. Cryderman, whose permanent address is: P.O. Box 217, Keremeos, B.C., and has been domiciled in the Province of British Columbia since 1963, hereby state:

1. I am a graduate of the Provincial Institute of Mining at Haileybury, Ontario and am a member of the Association of Professional Engineers of the Province of Ontario.
2. I have been employed in the Mining Industry in responsible positions from the prospecting phase through development to production for a period of over thirty years.
3. The accompanying report is based on information taken from published maps and reports by the Geological Survey of Canada, on records supplied by Mr. A. Robertson from previous work and personal supervision of the drilling being reported on and the results of a petrographic study made by R. M. Thompson, P. Eng. for Tormont Mines of drill core from this property in 1965.
4. I have no direct or indirect interest in this property. Nor do I expect to receive any such interest.


C. J. Cryderman

Dated this 29th day of August, 1977.

DIAMOND DRILL RECORD

PROPERTY

HOLE No. B-1

DIP TEST		
Footage	Angle	
	Reading	Corrected

Hole No. Sheet No. **2** Lot. Total Depth.
 Section. Dep. Logged By.
 Date Begun. Bearing. Claim.
 Date Finished. Elev. Collar. Core Size.

DEPTH	DESCRIPTION	SAMPLE No.	WIDTH OF SAMPLE	OZ. Au.	OZ. Ag.	% Cu.
40.0' - 45.0'	Greyish coloured tuff, few stringers of pyrite. Few narrow bands hematite, some disseminated pyrite and chalco.	27	5.0'	Trace	0.02	0.13
45.0' - 50.0'	As above, increasing magnetite	28	5.0'	Trace	0.05	0.16
50.0' - 55.0'	Irregular bands and blocks of both magnetite and hematite, low tenor of both pyrite and chalco.	29	5.0'	Trace	0.05	0.15
55.0' - 60.0'	As above less chalco & pyrite	30	5.0'	Trace	0.03	0.18
60.0' - 65.0'	As for sample No. 11729 but slightly more pyrite	31	5.0'	0.005	0.06	0.23
65.0' - 70.0'	Contains 40% vein material. White qtz. & Some grey silicious crystalline material well mineralized with pyrite.	32	5.0'	0.01	0.13	0.08
70.0' - 75.0'	As above with one foot of vein material.	33	5.0'	Trace	0.06	0.23
75.0' - 80.0'	Broken core, some friable weathered sections. Few qtz. stgrs. Few stgrs. of massive pyrite	34	5.0'	Trace	0.05	0.09
80.0' - 85.0'	Broken core with some mud or fault gouge. Some stringers of pyrite and minor chalco. Several quartz stringers from 1/8" to 1/4". Some lost core; washed away?	35	5.0'	Trace	0.07	0.21

Prof. Byrdeman

DIAMOND DRILL RECORD

PROPERTY PAR Claims Nos. 1 to 8, 20 and 22, Nicola Mining Division

HOLE No. B - 1

DIP TEST		
Footage	Angle	
	Reading	Corrected

Hole No. Sheet No. 1 Lat. 6150
 Section Dep. 6610
 Date Begun 29 Nov. 75 Bearing 0
 Date Finished 10 Dec. 75 Elev. Collar

Total Depth 402.0'
 Logged By C. J. Cryderman
 Claim PAR NO. 4
 Core Size BQ
 Inclination - Vertical

DEPTH	DESCRIPTION	SAMPLE No.	WIDTH OF SAMPLE	OZ. Au	OZ. Ag	% Cu.
0.0'/5.0'	CASING: Glacial Till					
5.0'/107.0'	VOLCANIC: Grey to green coloured tuffaceous material, brecciated and altered, containing blocks and bands of hematite and magnetite. The whole mineralized with pyrite and a low tenor of chalcoppyrite. Some epidote and chlorite. The pyrite and chalco occurs in slips and seams and disseminated. Some quartz eyes up to 5 mm.					
	5.0' to 10.0' Weathered, brecciated tuff some pyrite.	11720	5.0'	Trace	0.06	0.09
	10.0' - 15.0' Brecciated tuff, more solid, considerable magnetite, fair pyrite, minor chalco.	21	5.0'	0.005	0.08	0.11
	15.0' - 20.0' As above - slight less pyrite and chalco.	22	5.0'	0.005	0.06	0.15
	20.0' - 25.0' 1.5' cherty weathered material some pyrite, 3.5' solid core with increasing pyrite and hematite with low tenor of chalco.	23	5.0'	0.005	0.08	0.45
	25.0' - 30.0' As above	24	5.0'	0.005	0.14	0.38
	30.0' - 35.0' Solid brecciated tuff, less hematite, increasing magnetite. Pyrite and chalco. as above.	25	5.0'	0.005	0.05	0.23
	35.0' - 40.0' Broken core, magnetite decreases. Pyrite and chalco as previous sample.	26	5.0'	0.005	0.03	0.09

C. J. Cryderman

DIAMOND DRILL RECORD

PROPERTY

HOLE No. B-1

DIP TEST		
	Angle	
Footage	Reading	Corrected

Hole No. Sheet No. 3 Lat. Total Depth.
 Section. Dep. Logged By.
 Date Begun Sec. 101.0-Aug. 1, 1977 Bearing Claim
 Date Finished 402.0-Aug. 7, 1977 Elev. Collar. Core Size

DEPTH	DESCRIPTION	SAMPLE No.	WIDTH OF SAMPLE	OZ. Au.	OZ. Ag.	% Cu.
85.0' - 90.0'	Broken core, blocks and bands of hematite in tuff. Some stringers and minor chalco.	36	5.0'	0.005	0.06	0.27
90.0' - 95.0'	Marked increased in content of iron minerals as well as the pyrite and chalco.	37	5.0'	0.005	0.06	0.19
95.0' - 100.0'	Broken core. 1 ft. contains some magnetite and pyrite. Bal. of section fine grained hematized silicious material containing very minor pyrite in tiny fractures.	38	5.0'	Trace	0.04	0.07
100.0' - 107.0'	Some fine grained hematized silicious material, mostly muddy friable material, fault gouge? about 4.0' core washed away. Hole discontinued due to faulty motor on d.d. Reset on hole August 1, 1977, actual depth of hole 101.0'.					
101 - 147.5	Quartzite - Fine grained, brecciated, light grey to white in colour, some sections has greenish cast may be due to epidote. Sparse disseminated pyrite throughout.					
101.0 - 106.0	Fault gouge.					
103.	0.5" Graphitic material.					
105.5	Graphite on slip face.					

B. J. Bryden

DIAMOND DR. - RECORD

PROPERTY

HOLE No. B - 1

DIP TEST		
Footage	Angle	
	Reading	Corrected

Hole No. Sheet No. 4 Lat. Total Depth.....
 Section..... Dep..... Logged By.....
 Date Begun..... Bearing..... Claim.....
 Date Finished..... Elev. Collar..... Core Size

DEPTH	DESCRIPTION	SAMPLE No.	WIDTH OF SAMPLE	Au	Ag	% Cu.
110.0 - 114.0	Core broken. Slips 10° to 45° to axis of core. Some quartz filled fractures 1/16" to 1/2". Some white and some smokey qtz. Smokey qtz. may be due to fine graphite or MoS2. Most qtz. filled fractures contain varying amounts of pyrite.					
122.0 - 123.0	Brecciated but less broken. Some green minerals (Epidote)? and some hemitite.					
132.5 - 133.0	Fault gouge, some 1/8" strgs. of pyrite 45° to core. Some irregular smokey qtz.					
135.0 - 136.2	Some irregular magnetite. Some fractures up to 1/2" filled with pyrite. May be some very minor MoS2.	12014	1.2'	0.004	0.12	
137.0 - 138.0	Fault gouge					
138.5 - 141.5	Contain irregular magnetite and fair pyrite mineralization.	12015	3.0'	0.003	0.06	
147.5	Less brecciation and finer texture.					
152.0	3.0" Irregular smokey qtz. with fair pyrite.					
154.5 - 3.0"	Fault gouge, slip faces 20" to core.					
155.5 - 2.0"	Fault gouge, slip faces 20° to core.					
157.0 - 158.0	Fault gouge, slip faces 45° to core.					

By Bryderman

DIAMOND DRILL RECORD

PROPERTY

HOLE No. B - 1

DIP TEST		
Footage	Angle	
	Reading	Corrected

Hole No. Sheet No. 5 Lat. Total Depth

Section Dep. Logged By

Date Begun Bearing Claim

Date Finished Elev. Collar Core Size

DEPTH	DESCRIPTION	SAMPLE No.	WIDTH OF SAMPLE			
	158.3 - 159.0 - 1/2" qtz. stgr. near para to core. Pyrite and graphite or MoS2 on walls of stgr.					
	165.3 - 0.5' Fractured sec. Fractures contain very thin layer of graphite or MoS2.					
	170.0 - 171.0 Fault gouge, slip faces 20° to core.					
	176.2 - 1/2" Mud seam 30° to core.					
	178.0 - 179.0 Fault gouge.					
	180.0 - 181.0 Fault gouge.					
	191.5 - 192.5 Mud seam walls 45° to core.					
	193.0 - 194.0 Rubble. Core badly broken to 211.0'					
	Many fractures and slip faces contain very minor graphite or MoS2.					
	211.0 - 233.0 Rock more solid.					
	233.0 - 248.0 Broken sec.					
	239.0 - 1.0' Fault gouge. Beyond 248.0' rock more fine grained and more solid.					
	263.0 Graphite slip 45° to core.					
	263.5 Several 1/2" white qtz. stgrs. containing pyrite 15° and 30° to core.					
	267.0 Possible MoS2 on slip face 40° to core.					

C. F. Rydeman

DIAMOND D LL RECORD

PROPERTY

HOLE No. B - 1

DIP TEST		
Angle		
Footage	Reading	Corrected

Hole No. Sheet No. 6 Lat. Total Depth

Section Dep. Logged By

Date Begun Bearing Claim

Date Finished Elev. Collar Core Size

DEPTH	DESCRIPTION	SAMPLE No.	WIDTH OF SAMPLE			
	278.0 - 281.0 Shear? near para to core. Some graphite.					
	286.0 - 287.5 As above					
	298.0 - 301.0 Mud and fault gouge MoS2 on slip faces					
	30° to core.					
	305.0 - 1/2" Mud seam 30° to core.					
	307.0 MoS2 on slip face 10° to core.					
	310.5 - 2 para 1/2" white qtz. stgrs. containing					
	pyrite 15° to core.					
	311. 2" white qtz. vein contains pyrite 45° to core.					
	312.5 3" white qtz. stgr. containing pyrite 45° to core.					
	315.6 1/2" white qtz. stgr. containing pyrite 45°					
	to core.					
	325.0 2" white qtz. stgr. 15° to core mineralized					
	with pyrite. MoS2 on both walls.					
	326.5 3/4" white qtz. stgr. minor pyrite 35° to core.					
	330.0 - 402.0 Rock grades to porphyritic phases.					
	Takes on yellow to greenish cast in places.					
	340.0 Several small 1/2" rectangular inclusions of					
	what appears to be hematite.					
	340.8 Several inches of irregular quartz containing					

L. J. Brydeman

To: Dela Mines Ltd.

REPORT No A25 - 954

PAGE No, 1

BONDAR-CLEGG & COMPANY LTD.

DATE: January 2, 1976

11107 Royal Centre
1055 West Georgia Street
Vancouver, B.C.

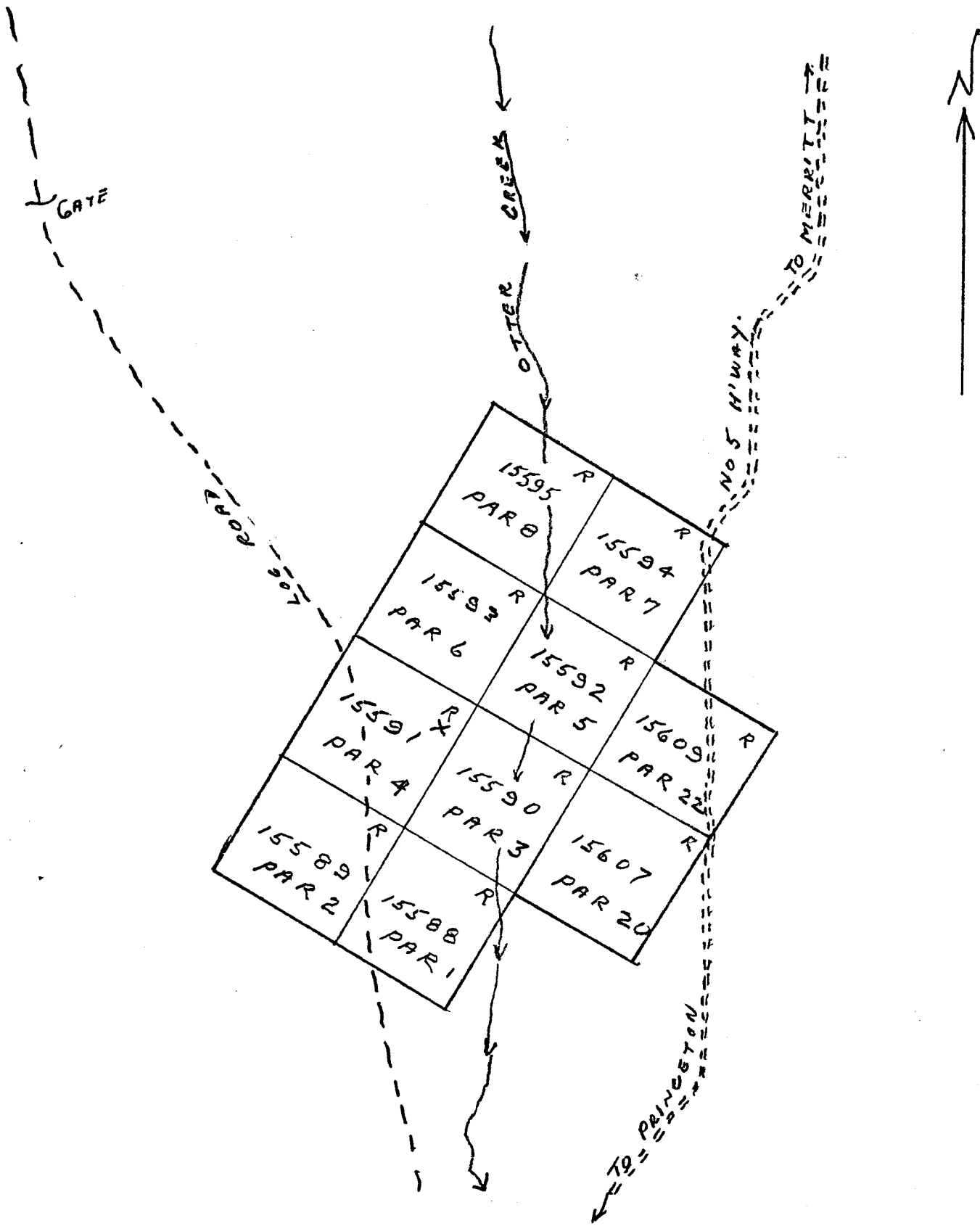
CERTIFICATE OF ASSAY

Samples submitted: December 22, 1975
Results completed: January 2, 1976

I hereby certify that the following are the results of assays made by us upon the herein described core samples.

MARKED	GOLD		SILVER	Cu							TOTAL VALUE PER TON (2000 LBS.)
	Ounces per Ton	Value per Ton	Ounces per Ton	Percent	Percent	Percent	Percent	Percent	Percent		
11720	trace		0.06	0.09							
11721	0.005		0.08	0.11							
11722	0.005		0.06	0.15							
11723	0.005		0.08	0.45							
11724	0.005		0.14	0.38							
11725	0.005		0.05	0.23							
11726	0.005		0.03	0.09							
11727	trace		0.02	0.13							
11728	trace		0.05	0.16							
11729	trace		0.05	0.15							
11730	trace		0.03	0.18							
11731	0.005		0.06	0.23							
11732	0.01		0.13	0.08							
11733	trace		0.06	0.23							
11734	trace		0.05	0.09							
11735	trace		0.07	0.21							
11736	0.005		0.06	0.27							
11737	0.005		0.06	0.19							
11738	trace		0.04	0.07							

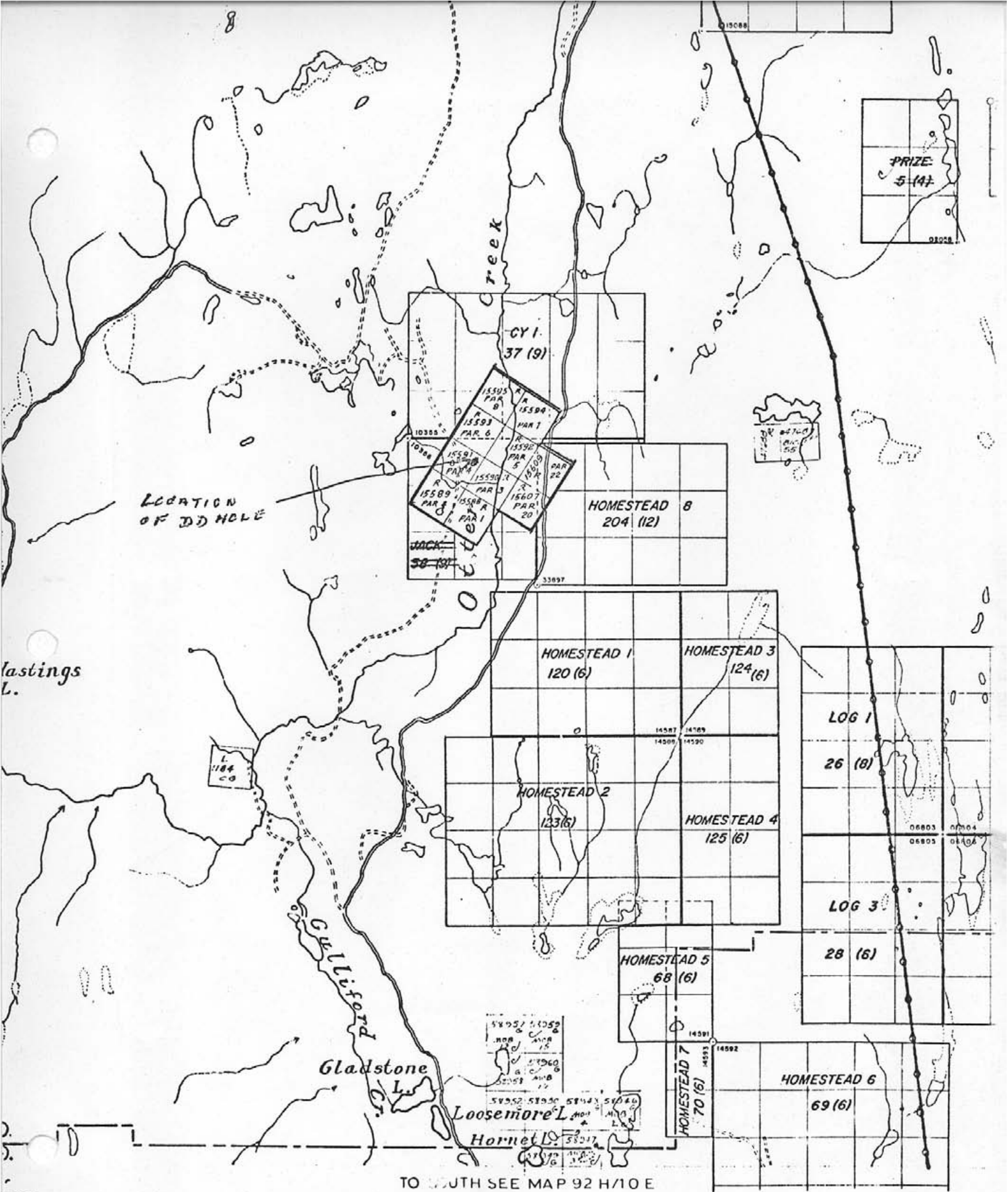
Registered Assayer, Province of British Columbia



SURFACE PLAN OF PAR CLAIMS
 SCALE 1" = 1500' APPROX.
 LOCATION OF DRILL HOLE NO. B 1 SHOWN THUS X

25/8/77

C. J. Crederman
 C. J. CREDERMAN, ENG. 1/C

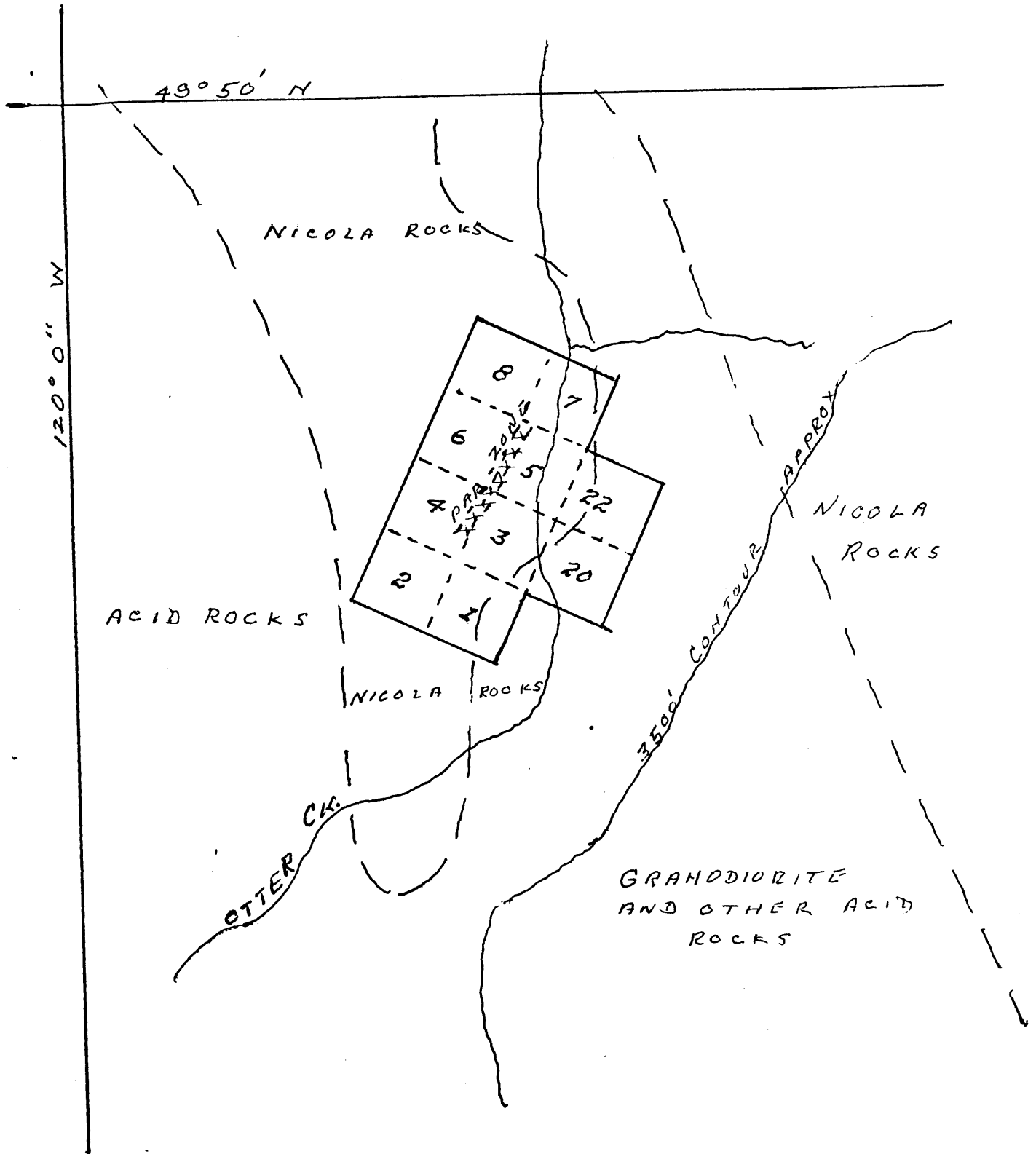


TO SOUTH SEE MAP 92 H/10 E

DEPARTMENT OF MINES AND PETROLEUM RESOURCES
VICTORIA, B.C.

MINERAL MAP 92 H/15E

lec. h 25/8/77



SKETCH SHOWING GENERAL GEOLOGY APPROXIMATELY
 (AFTER C. RILEY, P. ENG., 1962)
 SCALE 1" = 1/2 mi.

C. J. Cryderman
 C. J. CRYDERMAN, ENG. 1/C
 AUGUST 26, 1977

BRITISH COLUMBIA MINING RECEIPT

Mining Division North

Issued at Vancouver

No 111096 E

Date December 16, 1976

RECEIVED from Andrew Robertson

the sum of Twenty-two hundred — 00 Dollars,

in payment of Recording Book in name of

North and British Columbia RR

COPY

Signature Jill Turner

Office Sub-mining Recorder

\$ 2200.00