

6480

REPORT ON DIAMOND DRILLING

"A" GROUP CLAIMS

OMENICA M.D.

MINERAL RESOURCES BRANCH
ASSESSMENT REPORT

NO. _____

October 24, 1977

D. A. Davidson P.Eng.

REPORT ON DIAMOND DRILLING

GROUP CLAIMS, OMENICA M.D.

This drilling program involves the extension of holes drilled in 1976 and filed in Diamond Drilling Report #5928.

DRILL HOLE LOCATIONS

The drill holes are located at the base of the north-eastern slope of Hudson Bay Mountain, approximately 4 1/2 miles northwest of Smithers, B.C. Figure 1 shows the locations of the mineral claims on which the work was done. Figure 2 shows the location of these claims and drill holes relative to the co-ordinate system used by Climax Molybdenum Corp. of B.C. Ltd.

CORE LOCATION

Drill core is stored in the Climax warehouse in Smithers, B.C.

CORE LOGS

DDH 76-S2

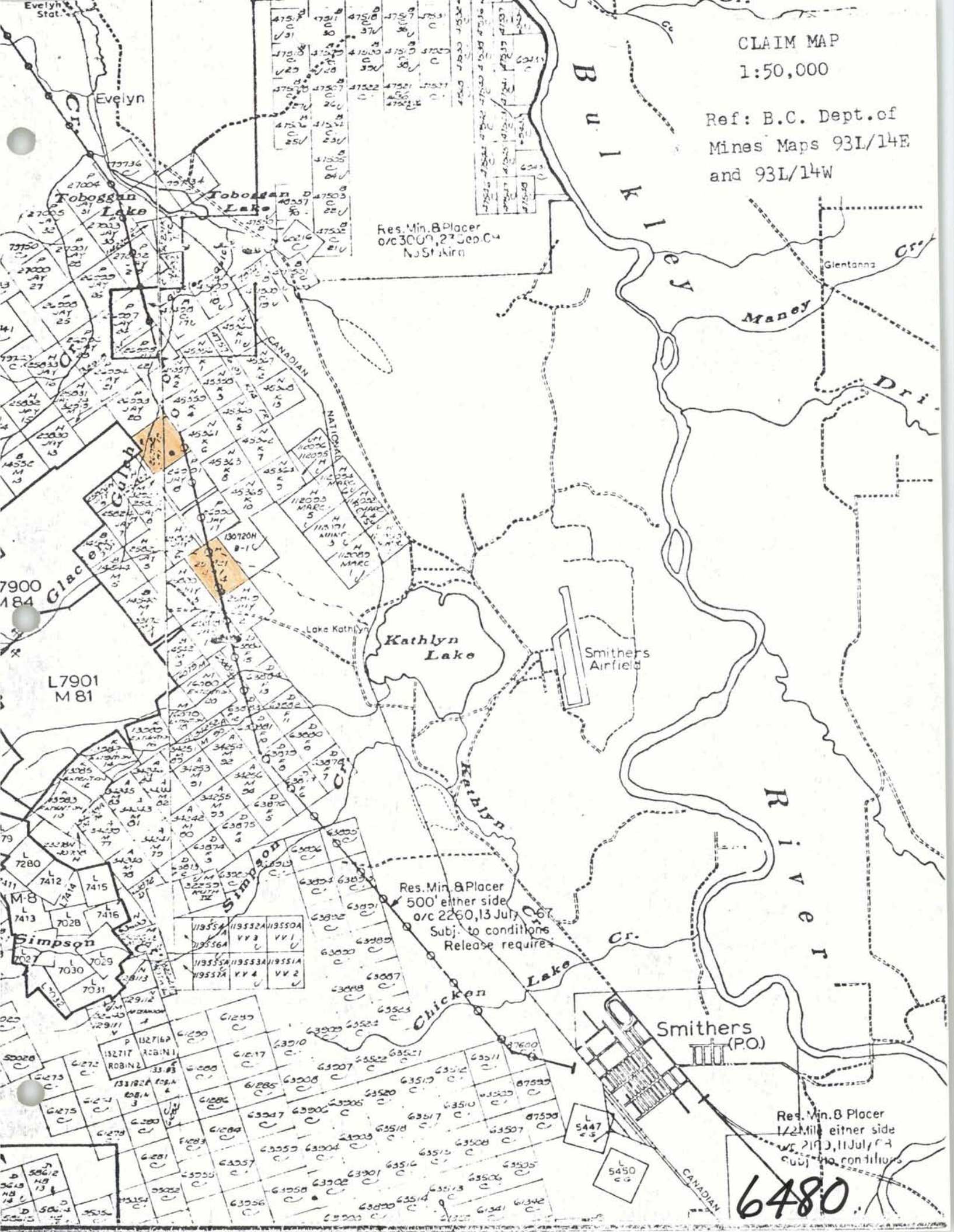
This hole had been triconed to 110 feet in 1976. The hole was extended using a 3 7/8" diameter tricone bit to bedrock at 185 feet. The hole was then cored (BQ) to 227 feet.

110-161	Clay with some boulders to 8 inches.
161-178	"Hard pan" clay with some small boulders.
178-180	Boulders and sand.
180-185	"Hard pan" clay with some small boulders.
185-227	Poorly consolidated varved sediments. Soft, dark grey to black argillaceous beds from 1/16" to several feet thick interbedded with greywacke beds to one foot thick. Cross-bedding and/or folding near 207. Angular fragments of argillaceous material present in some greywacke beds.

Primary structures at 40° to core-axis at

CLAIM MAP
1:50,000

Ref: B.C. Dept. of
Mines Maps 93L/14E
and 93L/14W



Res. Min. & Placer
o/c 3000, 27 Sep 04
No Staking

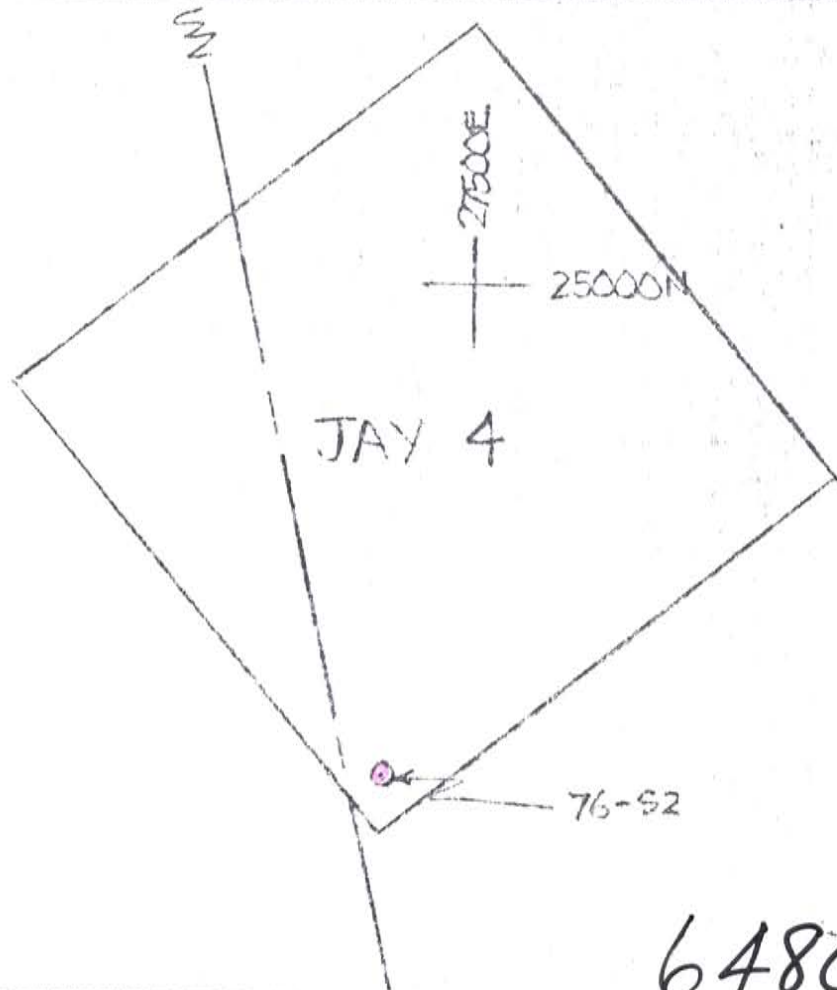
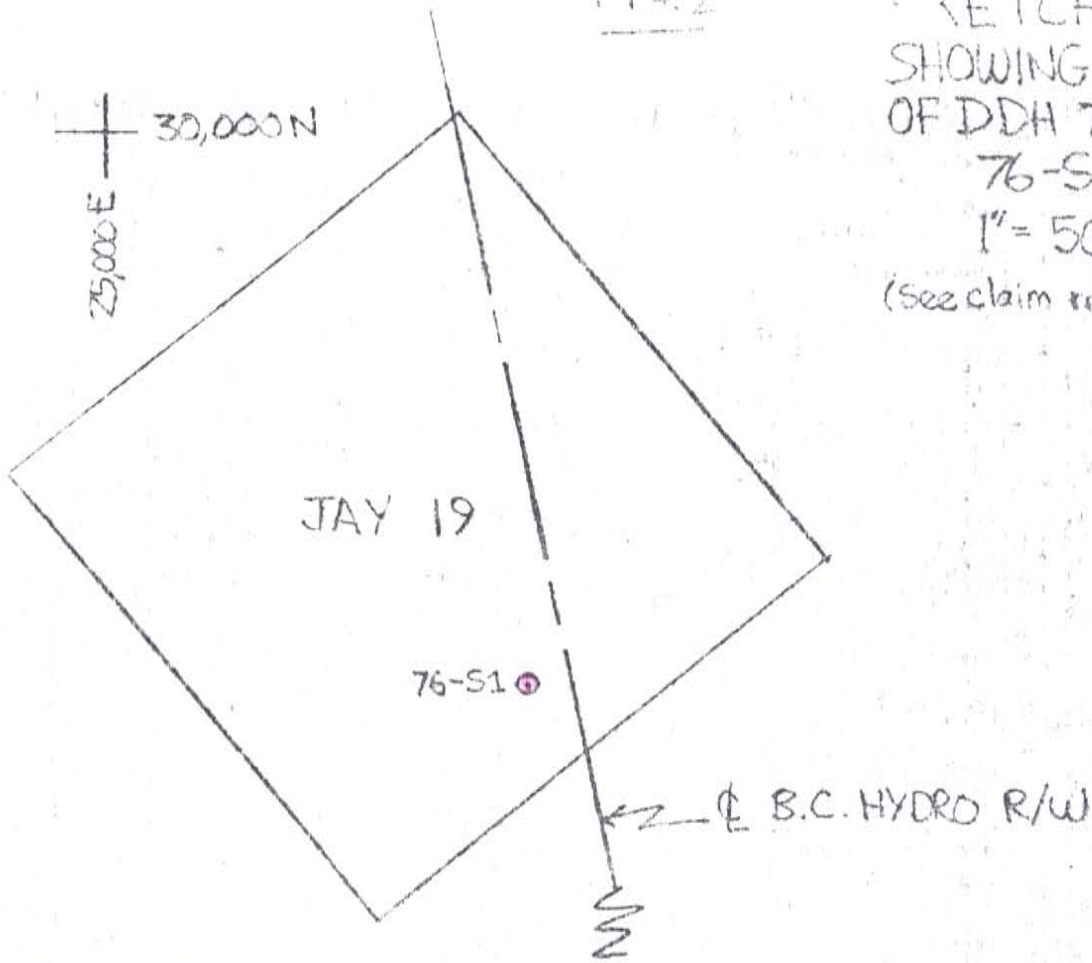
Res. Min. & Placer
500' either side
o/c 2260, 13 July 06
Subj. to conditions
Release require

Res. Min. & Placer
1/2 Mile either side
o/c 2103, 11 July 03
Subj. to conditions

6480

FIG. 2

SKETCH PLAN
SHOWING LOCATION
OF DDH 76-S1 &
76-S2
1" = 500'
(See claim map)



6480

185. Folding(?) near 207 trends vary from 40° - 10° - 40° to core axis. Primary structures trend 30° - 40° to end of hole.

DDH 76-S1

This hole had tightened and had to be reamed to bottom. The hole was extended to 597 using BQ gear. The sediments encountered in this work are more highly consolidated than those found in the upper part of the hole.

- 488-510 Soft argillaceous beds from 1/16" to several feet thick, interbedded with greywacke beds to 12 inches in thickness. The thicker greywacke layers are at 491, 493, 504. Primary structures @ 60° - 80° /C.A.
- 510-534 As above. Hairline fractures, 1/16" mesh of irregular carbonate stringers 515-522. Possible fold or slump structure. Primary structures 10° /C.A. near 522 then return to average 50° /C.A.
Rock becoming more highly consolidated. Hairline fractures with small offsets at 528-532. 1/4" white carbonate stringer @ 60° /C.A. @ 527. No large greywacke layers. Primary structures average 60° /C.A. near 534.
- 534-578 As above. Larger greywacke layers 560-62, 564-66, 568.5-569.5, 572-73, 574-75. Primary structures average 50° /C.A.
- 578-593 As above. Rock contorted. Numerous hairline fractures and slips, crumpling. Hairline carbonate stringers common in fractures. Possible Fault.
- 593-597 Sediments relatively undisturbed. Large greywacke layer 593-595.5. Primary structures @ 80° /C.A. 1/4" carbonate vein @ 30° /C.A. @ 595.



D.A. Davidson M.A.Sc. P.Eng.

October 24, 1977

COST STATEMENT

J.T. THOMAS DIAMOND DRILLING LTD.

INVOICE No. 77-10	\$ 2400.00
INVOICE No. 77-11	2606.00

D. DAVIDSON P. Eng.

program layout, supervision,
core logging, report
preparation, etc.
7 days @ \$113.84

796.88

TOTAL \$ 5802.88

J.T. THOMAS DIAMOND DRILLING LTD.

P.O. Box 394, Smithers, B.C.

October 21, 1977.

Invoice No. 77 - 10

Property Hudson Bay Mountain

To: Climax Molybdenum Corp. of B. C. Ltd.
West Yellowhead 16
Smithers, B.C.

This invoice is for diamond drilling and other services on the above property per contract.

Hole No.	Date		Overburden		Coring		Total Footage	Rate	Amount
	From	To	From	To	From	To			
76-S2									
	Ream		From 0'	to 110'			110	9.00	990.00
	Casing		110'	to 185			75	10.00	750.00
	Coring				185'	227'	42	10.00	420.00

Mobilization: 200.00

Demobilization:

Moving Costs:

Mud Costs: Drill Mud and additives 40.00

Cementing Costs:

Tractor Rentals:

Core Box:

Testing Hole:

Casing and Shoes Left in Hole:

Camp Provision:

Downtime:

Flytime:

Other:

Invoice Total

The above calculations are agreed to by:

\$ 2,400.00

D. D. Dand
Company Representative

J. T. Thomas
J.T. Thomas Diamond Drilling Ltd.

J.T. THOMAS DIAMOND DRILLING LTD.

P.O. Box 394, Smithers, B.C.

Invoice No. 77 - 11

October 21, 1977.

Property Hudson Bay Mountain

To: Climax Molybdenum Corp. of B.C. Ltd.
West Yellowhead 16
SMITHERS, B.C.

This invoice is for diamond drilling and other services on the above property per contract.

Hole No.	Date From	Date To	Overburden From	Overburden To	Coring From	Coring To	Total Footage	Rate	Amount
<u>76-S1</u>		Clean Hole	0'	to 488'			Flat rate		\$ 1,000.00
		Coring			488	597	109	10.00	1,090.00

Mobilization:

Demobilization:

200.00

Moving Costs:

Mud Costs:

Cementing Costs:

Cat

~~XXXXXX~~ Rentals: 12 hours @ \$25.00

300.00

Core Box: 4 boxes @ \$4.00

16.00

Testing Hole:

Casing and Shoes Left in Hole:

Camp Provision:

Downtime:

Flytime:

Other:

Invoice Total

\$ 2,606.00

The above calculations are agreed to by:

D. Darnold

Company Representative

John Thomas

J.T. Thomas Diamond Drilling Ltd.