

6522

RECONNAISSANCE GEOCHEMICAL SURVEY
on the
EUREKA & ERIC CLAIM GROUPS
REVELSTOKE MINING DIVISION, B.C.

82M / 1E
51° 12' , 118° 06'

Ronald H.D. Philp, P. Eng.
Consulting Geologist

Vancouver, B.C.
July 14, 1977

TABLE OF CONTENTS

	<u>Page</u>
1-00 INTRODUCTION	1
2-00 PROPERTY	1
2-10 Work Conducted	2
3-00 GEOLOGY	3
3-10 Stratigraphy	3
3-20 Structural Setting	3
3-30 Economic Geology	4
4-00 RESULTS OF GEOCHEMICAL SURVEY	4
5-00 RECOMMENDATIONS	4

RECONNAISSANCE GEOCHEMICAL SURVEY
on the
EUREKA & ERIC CLAIM GROUPS
REVELSTOKE MINING DIVISION, B.C.

1-00 INTRODUCTION:

The Eureka and Eric claim groups, located in the Revelstoke Mining Division of British Columbia, are situated north and east of LaForme Creek, 20 miles north of Revelstoke, B.C.

The Eric Group consists of 4 reverted Crown Grants adjoining the old Mastadon Mine; the Eureka Group consists of 5 reverted Crown Grants approximately 1 mile to the south east.

Reconnaissance geochemical soil sampling was carried out with a view towards conducting a much larger survey throughout a mineralized belt extending toward the northwest and southeast.

2-00 PROPERTY:

The property consists of 9 reverted crown granted mineral claims, in two groups located in the Revelstoke Mining Division and held by LeMans Resources Ltd.

Eureka Group:

<u>Claim Name:</u>	<u>Record Date:</u>	<u>Record No.:</u>	<u>Lot No.:</u>
Flora Bell	Nov. 6, 1974	11515	9121
Grandview	Nov. 6, 1974	11516	9122
Morning Star	Nov. 6, 1974	11517	9123

<u>Claim Name:</u>	<u>Record Date:</u>	<u>Record No.:</u>	<u>Lot No.:</u>
Eureka	Nov. 6, 1974	11518	9124
Eastern Star	Nov. 6, 1974	11519	9125
<u>Eric Group:</u>			
Eric #2	Nov. 6, 1974	11520	15617
A & E 6 Fr.	Nov. 6, 1974	11521	15618
Eric #4	Nov. 6, 1974	11522	15619
Eric #8	Nov. 6, 1974	11523	15634

2-10 Work Conducted:

A reconnaissance survey was conducted to locate the exact claim boundaries and determine the general geology as described in an assessment report by F. Holcapek dated November, 1975. It was not possible to determine the exact boundaries, and their location is based on topographic features and the location relative to the geology as shown by Holcapek.

A total of 3 lines were sampled across the geological trend on the Eric Claim groups and, 4 lines on the Eureka, line spacing being 800 feet and sample interval 100 feet, for a total of 68 samples. Control was provided by chain and compass.

Geochemical testing for lead and zinc was carried out by General Testing Laboratories, 101 East Pender St., Vancouver, B.C. using the atomic absorption method of analysis. After drying in an electric oven, the samples were screened and the minus 80 mesh fraction was digested in a hot perchloric-nitric acid solution to dryness. These were redissolved in a 5% nitric and mercuric nitric acid solution. Quantitative analysis for total lead and zinc was performed by atomic absorption and results were

recorded in parts per million (ppm).

3-00 GEOLOGY

The area has been mapped by Mr. J.O. Wheeler, Geological Survey of Canada and the results have been published as Map 12-1964, Paper 64-32, at a scale of 1 inch = 4 miles.

3-10 The stratigraphic section has been taken from this publication, but generalized.

Stratigraphy:

Post Lower Cambrian:

Granitic Intrusions.

Lower Cambrian and Later:

Landeau Group: Slates, phyllites, quartzites and schists.

Cambrian - Lower Cambrian:

Badshot Formation: Limestones, dolomites, phyllites, quartzite

Hamill Group: Quartzite, phyllite, limestone, schists & greenstone

Windermere:

Horsethief Creek Group: Slates, phyllites, and schists.

3-20 Structural Setting:

Rock units in the area are strongly deformed by folding and three major trends have been recognized in the area - westerly, north-easterly and north-westerly. Foliation parallel to axial planes is common. Folds vary from similar in the more incompetent, to concentric in the competent thick bedded rock units. Flow folds are associated with carbonate rocks. Normal faulting, shear zones, and thrust faulting create a complex geological picture.

3-30 Economic Geology:

The economic minerals found in the area are lead, zinc, silver and copper. The mineralization occurs in veins and pods associated with faulting and shear zones or to a lesser extent as replacements of limestone. The Badshot Limestone appears to be the most favourable host.

The Mastodon Mine produced 15,332 tons of ore grading 0.2 oz/ton of silver, 0.5% lead and 9.5% zinc.

Lead-zinc-silver-copper veins have been explored prior to 1918 on the Eureka Claims. Several adits and open cuts have been reported.

4-00 RESULTS OF GEOCHEMICAL SURVEY:

The survey failed to outline any continuous anomalous areas, except on the most easterly line where zinc values increased appreciably.

Slightly higher than average zinc values also occur on the adjoining line 800 feet to the west. It is significant that these higher values occur in an area where the limestone appears to be faulted or folded (Holcapek map), mineralization possibly being associated with this apparent structural feature.

Considerable difficulty was encountered in much of the area to obtain samples from a consistent soil horizon.

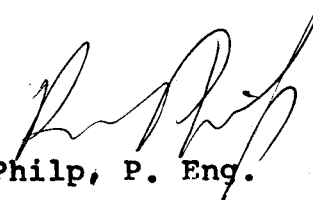
For this reason, a bio-geochemical survey of zinc content in twigs as described in the B.C. Minister of Mines Report for 1950 (pp A165-166) for a survey of the Mastodon Property may be more suitable in this region.

5-00 RECOMMENDATIONS:

A program of geochemical soil sampling combined with bio-

geochemical twig sampling is recommended using close control and with a better knowledge of the geology and known mineralized zone. This should be extended well beyond the limits of the claims.

Respectfully submitted,

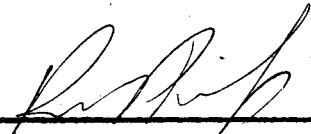
A handwritten signature in cursive script, appearing to read 'R. Philp', written in dark ink.

R.H.D. Philp, P. Eng.

CERTIFICATE

I, Ronald H. D. Philp, of Wasbam, Rio Coco, Depto de Zelaya, Nicaragua do hereby certify that:

1. I am a graduate in Geological Engineering from the University of British Columbia (B.A. Sc. 1961).
2. I am a registered Professional Engineer in the Province of British Columbia.
3. I have practiced my profession since 1961 in various countries, including Canada, U.S.A., Nicaragua, Fiji, Australia and Mexico.
4. The subject report is based on personal observations in the field and a review of available literature on the area.



Ronald H.D. Philp, P. Eng.
Consulting Geologist

Vancouver, B.C.

July 14, 1977

DOMINION OF CANADA:
PROVINCE OF BRITISH COLUMBIA:

To Wit:

In the Matter of the geochemical survey
conducted on the Tureka Group, Revelstoke
Mining District.

I, John W. Guilbault

of 101-325 Howe Street, Vancouver, B.C.

in the Province of British Columbia, do solemnly declare that the following personnel were employed and costs incurred in conducting the work during July, 1977

Personnel:

D. Philp-geologist, engineer	- field	2 days @ \$200/day	\$400.00
	- office	1 day @ \$200/day	200.00
E. G. Hawley-geologist	- field	2 days @ \$125/day	250.00
L. Birstens-helper	- field	2 days @ \$ 60/day	120.00
E. Philp-helper	- field	2 days @ \$ 45/day	90.00
C. Armstrong-helper	- field	2 days @ \$ 45/day	90.00
			<u>\$1,150.00</u>

Disbursements:

Truck Rental	960 miles @ 24¢/mile	\$115.20	
Gasoline		32.10	
Groceries, supplies		62.00	
Hotel		30.00	
Geochemical testing		86.25	
		<u>\$325.55</u>	325.55
Plus 20% overhead on disbursements			65.11
Total Amount			<u>\$1,540.66</u>

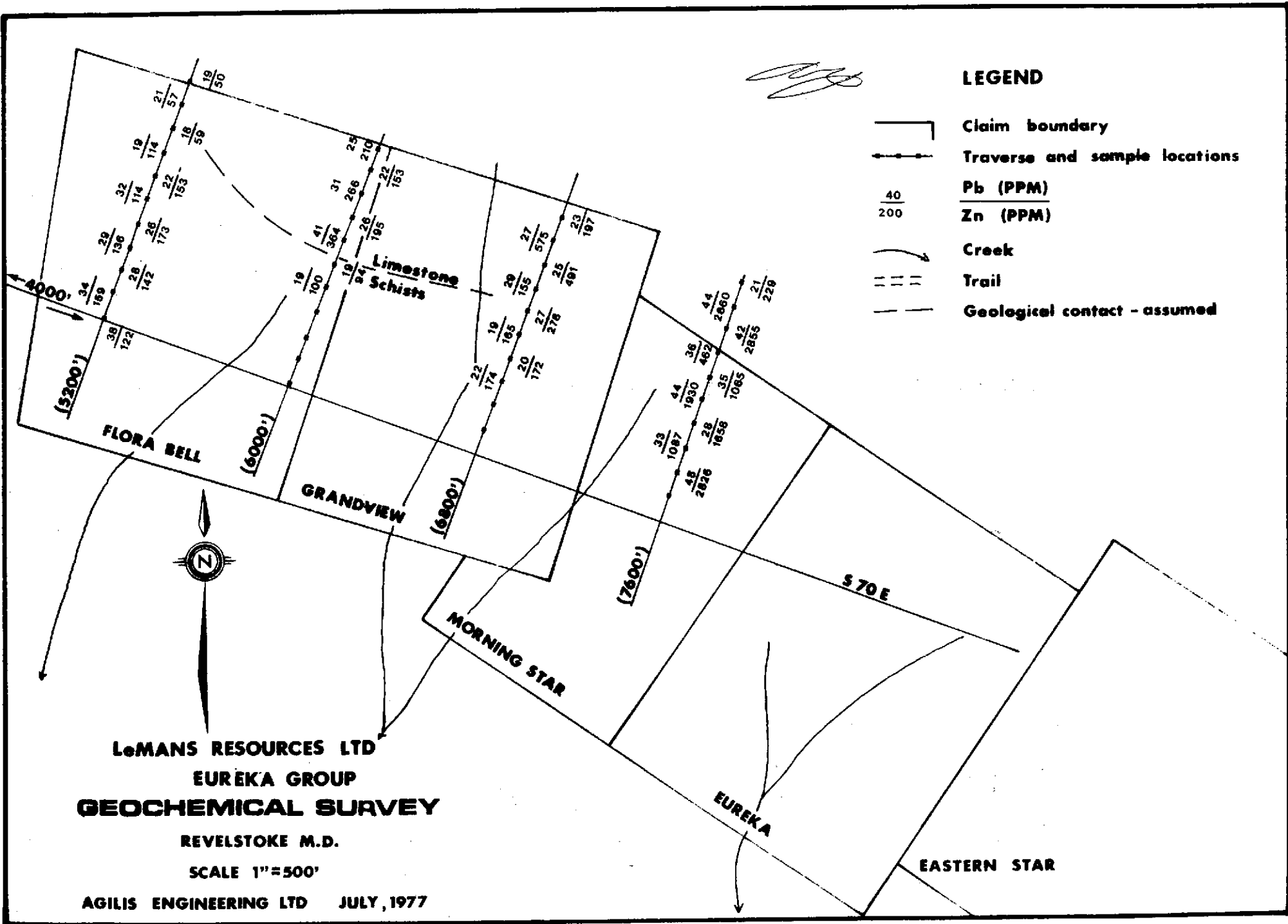
And I make this solemn declaration conscientiously believing it to be true, and knowing that it is of the same force and effect as if made under oath and by virtue of the "Canada Evidence Act."

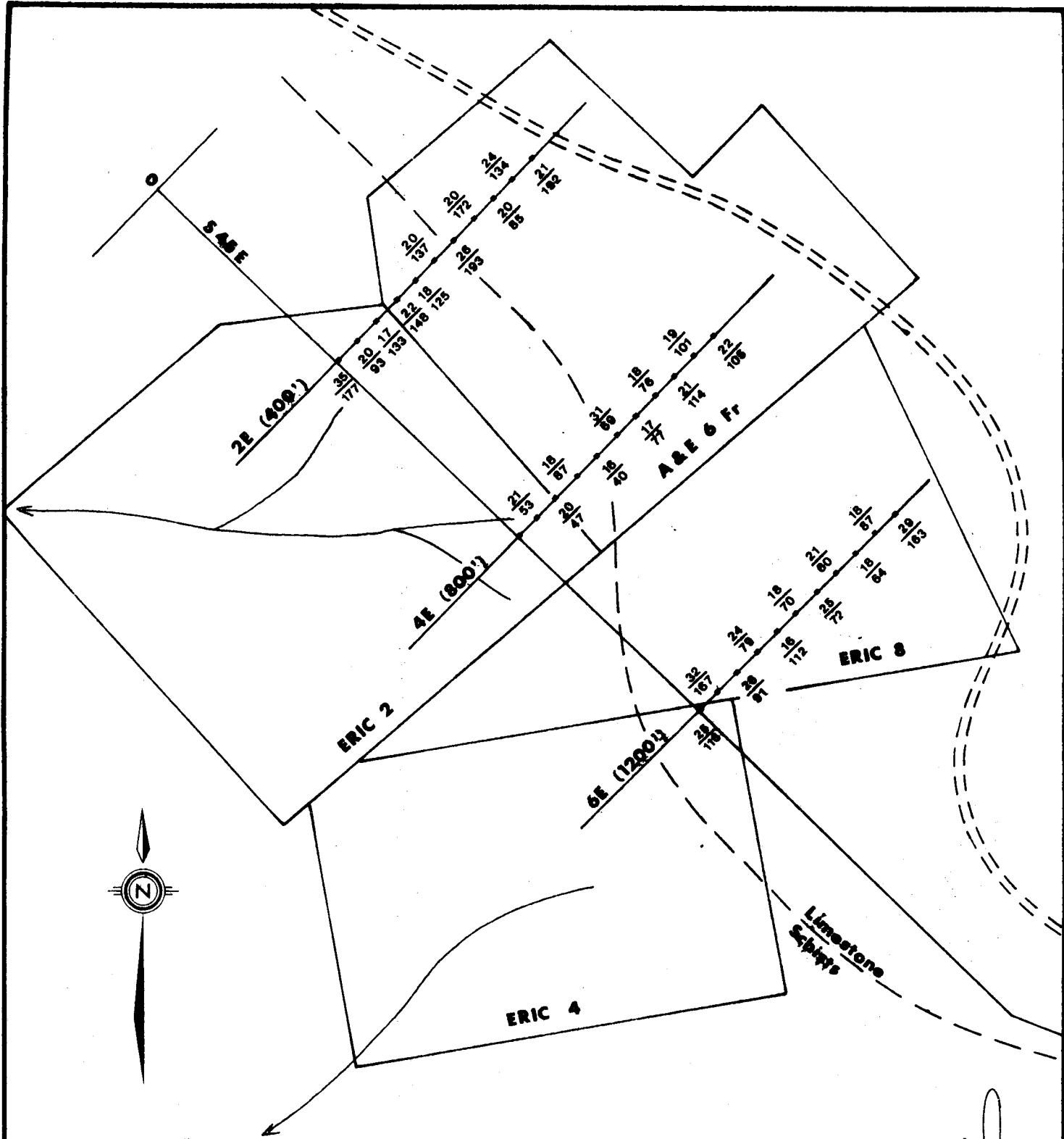
Declared before me at the
of Vancouver, in the
Province of British Columbia, this 28
day of July 1977 . A.D.

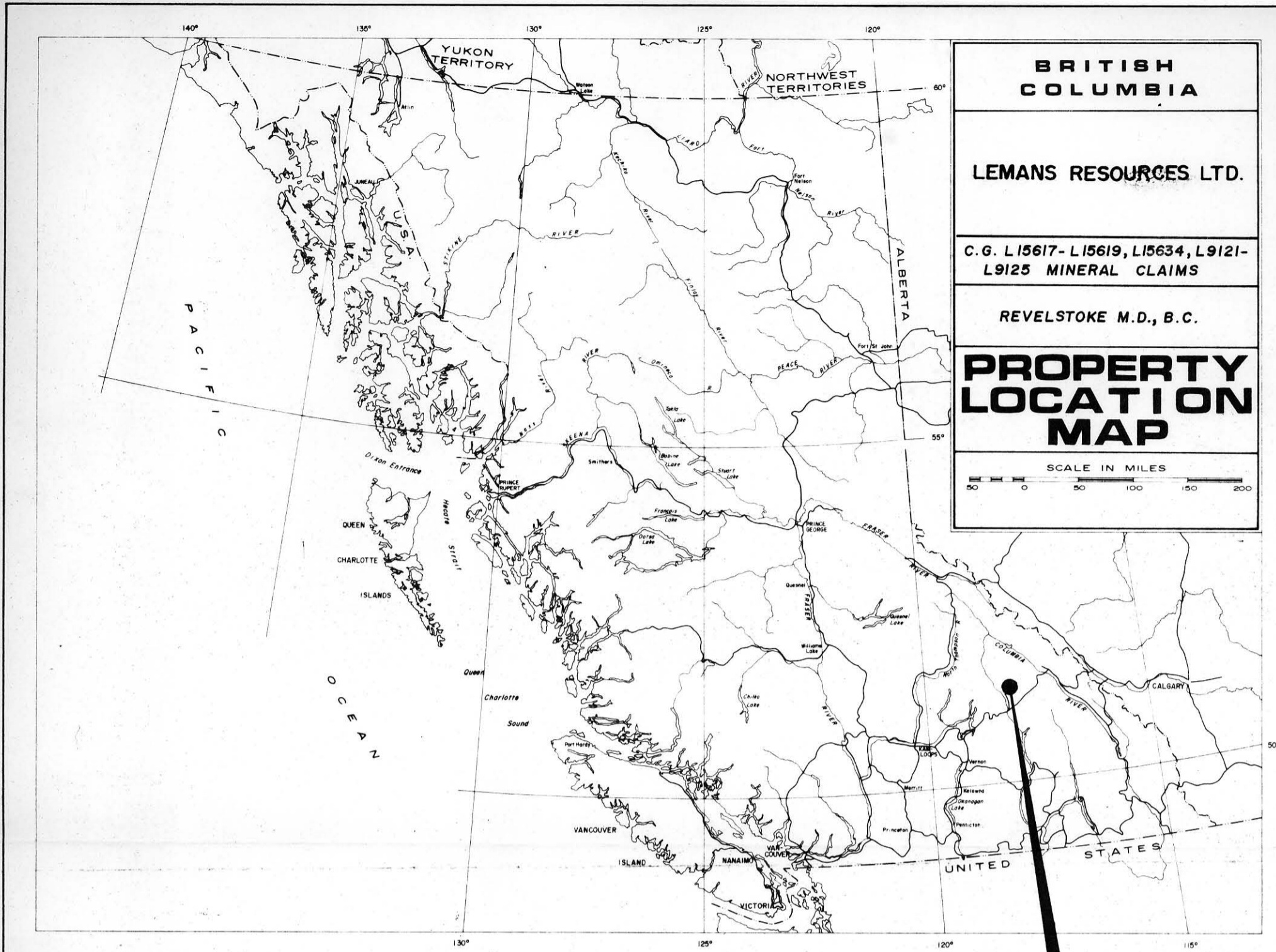
John W. Guilbault

W. David Black

A Commissioner for taking Affidavits for British Columbia or
A Notary Public for the Province of British Columbia
Province of British Columbia







BRITISH COLUMBIA

LEMANS RESOURCES LTD.

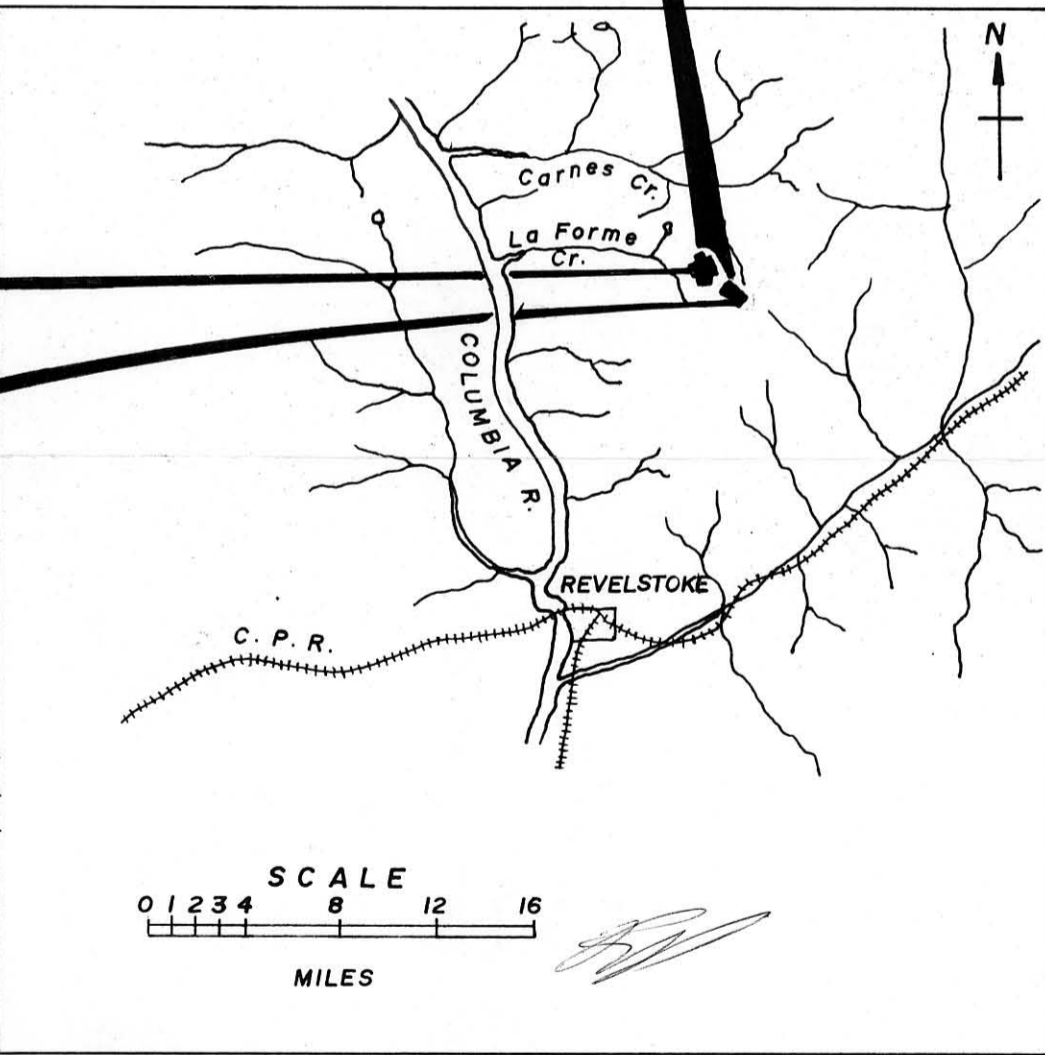
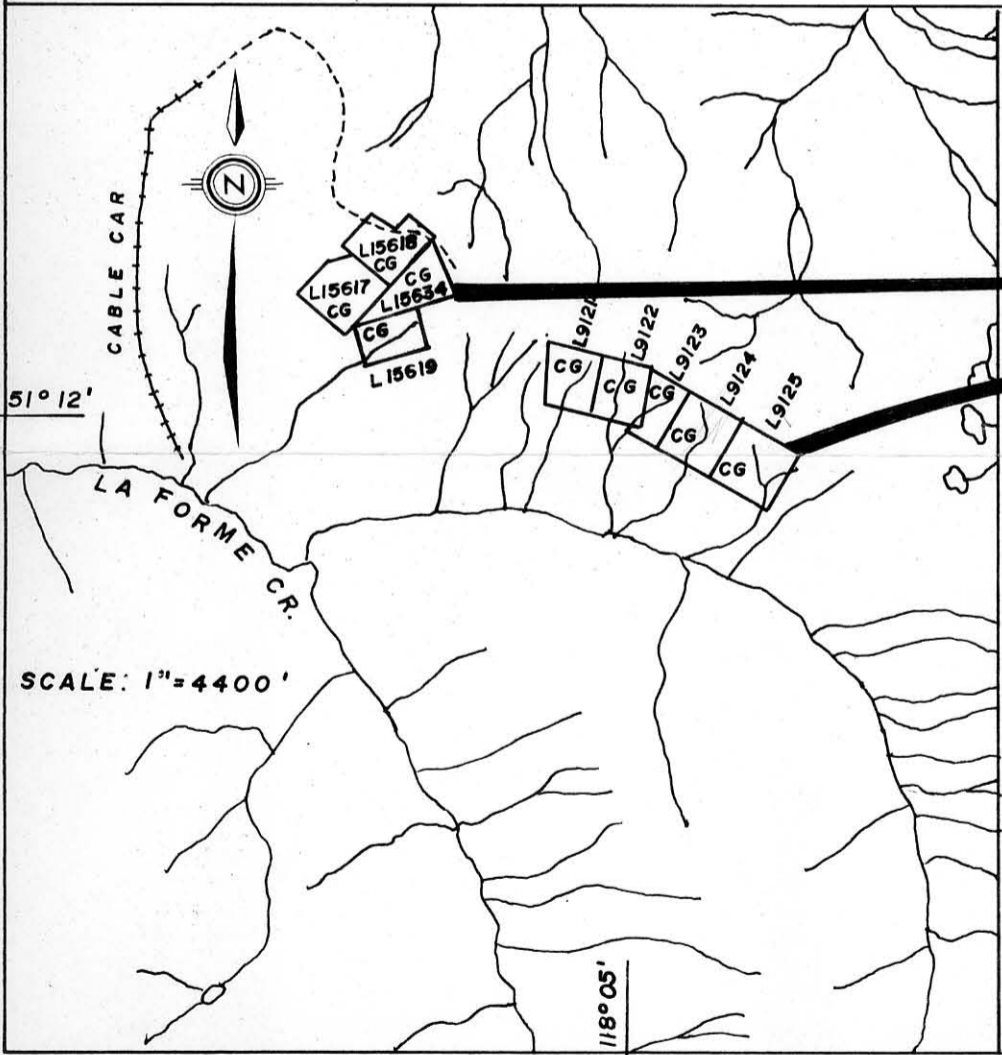
C.G. L15617-L15619, L15634, L9121-L9125 MINERAL CLAIMS

REVELSTOKE M.D., B.C.

PROPERTY LOCATION MAP

SCALE IN MILES

0 50 100 150 200



[Handwritten signature]