



1524
CANEX PLACER LIMITED

ENDAKO MINES DIVISION

PHONE: FRASER LAKE 699-6211

ENDAKO, B.C. CANADA
VOJ ILO

PERCUSSION DRILLING REPORT

FOR

NU. 2 GROUP OF MINERAL CLAIMS

by

CANEX PLACER LIMITED

ENDAKO MINES DIVISION

OMINECA MINING DIVISION

ENDAKO, B.C.

(Latitude 54°N Longitude 125°)

Percussion drilling, sampling and assaying
undertaken during period October 31, 1977 to November 15, 1977

A. J. Peters

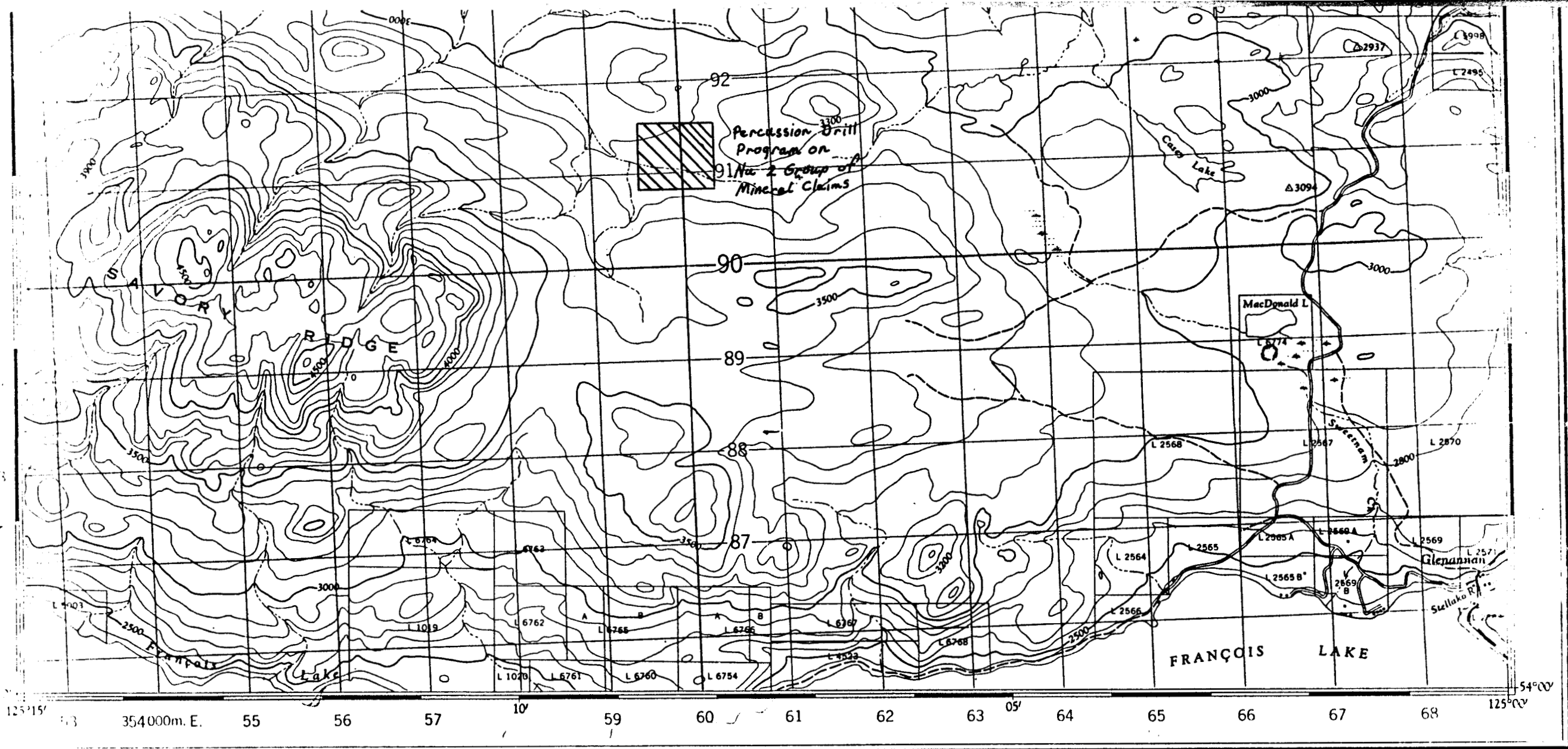
November 15, 1977

TABLE OF CONTENTS

	<u>Page</u>
Introduction	1
Mineral Claim Groups	1
Percussion Drill Program	1
Statement of Expenditures	2

Appendices

- I Percussion Drill Hole Location Map
- II Percussion Drill Hole Logs



Printed by the SURVEYS AND MAPPING
 DEPARTMENT OF MINES AND TECHNICAL
 SURVEYS from air photographs taken in 1955.

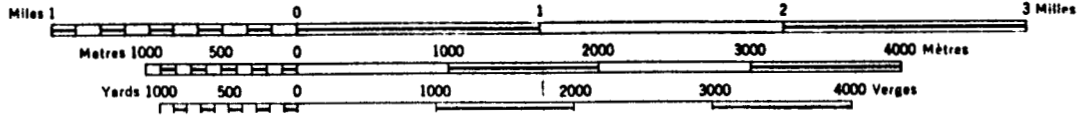
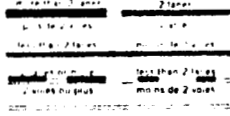
Établie et imprimée par la DIRECTION DES LÈVÉS ET DE
 LA CARTOGRAPHIE, MINISTÈRE DES MINES ET DES
 RELEVÉS TECHNIQUES en 1961, d'après les photographies
 aériennes prises en 1955.

ENDAKO

COAST DISTRICT RANGE 5
 BRITISH COLUMBIA

SCALE 1:50,000 ÉCHELLE

Routes
 1. Highway
 2. Road
 3. Footpath
 4. Gravel, foot path
 5. Gravel, foot path



Building	Bâtiment	Barn
School	École	Post Office
Church	Eglise	Cemetery
Mine or Open cut		Mine or fosse à ciel ouvert
Lighthouse	Phare	

INTRODUCTION

Six two-inch diameter percussion holes totalling 1800 feet were drilled during period 31 October 1977 to 3 November 1977. Drilling and assaying costs are being submitted for assessment work on Nu. 2 Group of Mineral Claims.

MINERAL CLAIM GROUP

Nu. 2 Group of Mineral Claims are located about five miles southwest of Endako, B.C. in Omineca Mining Division. The property is geographically located in southeast quadrant of quadrilateral, Latitude 54°N and Longitude 125°.

The following mineral claims comprise the Nu. 2 Group:

<u>Group</u>	<u>Mineral Claims</u>	<u>Record Numbers</u>	<u>Owner</u>
Nu. 2	Sam 11-16	73896 - 73901	Canex Placer
	Sam 35-44	73920 - 73929	Canex Placer
	Sam 48-51	73933 - 73936	Canex Placer
	Sam 81 & 83	80201 & 80203	Canex Placer
	Sam 85-87	80205 - 80207	Canex Placer
	Dat 1 Fr & Dat 8 Fr	81821 & 81828	Canex Placer
	Dat 403, 405 & 406	17291 + 17293, 17194	Canex Placer
	Dis 26 & 28-32	15265 & 15267-15271	Canex Placer
	Elk 12 Fr	81820	Canex Placer
	Nu. 1-3	14485 - 14487	Canex Placer

PERCUSSION DRILL PROGRAM

A series of vertical two-inch-diameter percussion drill holes were drilled on Dat 1 Frac. Mineral Claim. Sludge samples were collected from bedrock in ten-foot intervals. No samples were obtained from overburden. Samples were dried and assayed for MOS₂ content at Canex Placer Limited, Endako Mines Division Laboratory. Assaying was complete by November 15, 1977.

A D8 dozer was employed to prepare access roads and drill sites. This phase of work was conducted by Pooley Construction Company Limited.

Percussion drilling was contracted to L & L Drilling Ltd. Drilling commenced on October 31 and was completed on November 3, 1977.

The following is a list of percussion drill holes that are being submitted for assessment work purposes on Nu. 2 Group of Mineral Claims. An appended map on 1" = 1000' scale shows spatial location of drill holes on mineral claims. Assay results of each hole are also appended.

<u>Hole No.</u>	<u>Location Mineral Claim</u>	<u>Incl.</u>	<u>Hole Depth</u>	<u>Overburden Depth</u>	<u>Drilling Period 1977</u>
R157	Dat 1 Fr.	-90°	300 feet	20 feet	Oct. 31
R158	Dat 1 Fr.	-90°	300 feet	40 feet	Nov. 1
R159	Dat 1 Fr.	-90°	300 feet	40 feet	Nov. 1
R160	Dat 1 Fr.	-90°	300 feet	60 feet	Nov. 2
R161	Dat 1 Fr.	-90°	300 feet	40 feet	Nov. 2
R162	Dat 1 Fr.	-90°	300 feet	40 feet	Nov. 3

Hole collars are located in the field by tape and compass traverses from known survey points. Actual collars for completed percussion holes are not surveyed, so as a result, the latitude and departure as recorded on drill logs represent measurements of hole plot on a detailed map. Similarly, collar elevations are estimated to within five feet from a contour map.

STATEMENT OF EXPENDITURES

The following expenditures were incurred by Canex Placer Limited for above six percussion drill holes.

Personnel Costs

<u>Personnel</u>	<u>Period Employed</u>	<u>Hours and Rate</u>	<u>Cost</u>
A. J. Peters	Oct. 31 - Nov. 15, 1977	30 hrs. @ \$8.25	\$ 247.50

Percussion Drilling Costs

L & L Drilling Ltd. Invoice dated Nov. 10, 1977 \$4,950.00

Assaying Costs

156 samples for MOS2 @ \$5.00 \$ 780.00

Vehicle Costs

4 days @ \$25.00 a day \$ 100.00

Bull-dozer Costs

10 hrs. D8H dozer @ \$67.50 / hr. \$ 675.00

Miscellaneous Costs

Sampling supplies, 12" x 20" 6 mil. bags \$ 35.00

Total Percussion Drilling Costs for 1800 Feet \$6,787.50

Average Drilling Cost = \$3.77 per foot

CONCLUSION

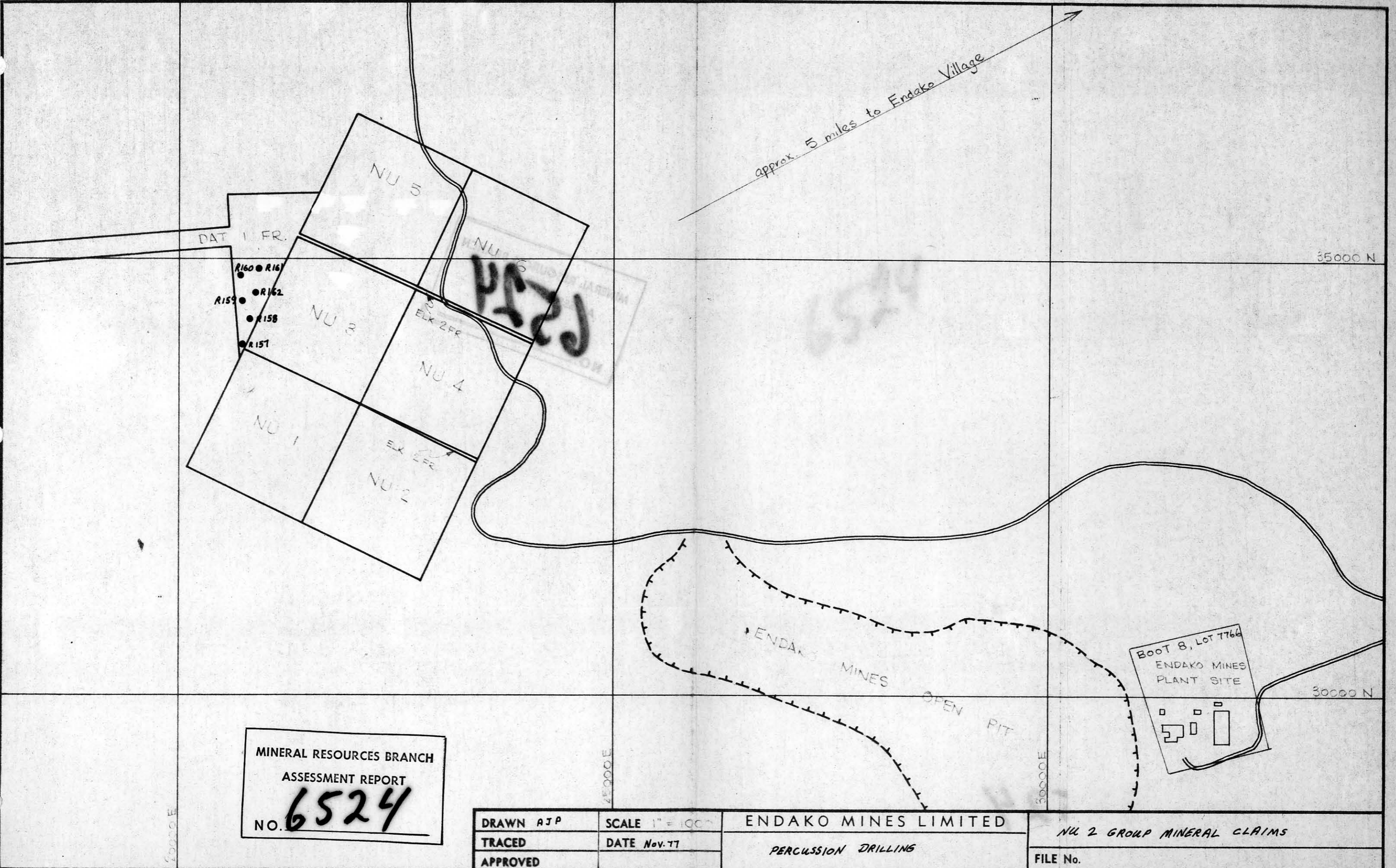
Six percussion drill holes totalling 1800 feet were drilled at average cost of \$3.77 per foot on Nu. 2 Group of Mineral Claims.

Submitted by:



A. J. Peters
Geological Technician
Canex Placer Limited
Endako Mines Division

AJP/jdb



MINERAL RESOURCES BRANCH
 ASSESSMENT REPORT
 NO. **6524**

DRAWN <i>AJP</i>	SCALE 1" = 100'	ENDAKO MINES LIMITED
TRACED	DATE <i>Nov. 77</i>	
APPROVED		<i>PERCUSSION DRILLING</i>

NU 2 GROUP MINERAL CLAIMS
 FILE No.

GRID Section 3100E

CANEX PLACER LIMITED ENDAKO MINES DIVISION

HOLE No. R157SHEET No. 1 of 2LOCATION GR1 3080 N

BEARING _____

LATITUDE 34030 NLOGGED BY AJPDATE COLLARED 3/10/77LENGTH 300'DEPARTURE 20700 E

DATE _____

DATE COMPLETED 3/10/77DIP -90°ELEVATION 3090'

ROCK TYPE AND ALTERATION	SAMPLE WIDTH	TAG NUMBER	% Mo	% Cu	% Zn	% Pb	% Ag	COMMENTS
0-20' Overburden								
524	20-30	4278	.01					
	30-40	9	.01					
	40-50	4280	.01					
	50-60	1	.01					
	60-70	2	.01					
	70-80	3	.01					
	80-90	4	.01					
	90-100	5	.01					
	100-110	6	.01					
	110-120	7	.01					
	120-130	8	.01					
	130-140	9	.06					
	140-150	4290	.03					
	150-160	1	.02					
160-170	2	.02						

GRID Section 3100E

CANEX PLACER LIMITED ENDAKO MINES DIVISION

HOLE No. R158SHEET No. 1 of 2LOCATION GRL 3380 N

BEARING _____

LATITUDE 34300 NLOGGED BY ATPDATE COLLARED 1/11/77LENGTH 300'DEPARTURE 20800 E

DATE _____

DATE COMPLETED 1/11/77DIP -90°ELEVATION 3095'

ROCK TYPE AND ALTERATION	SAMPLE WIDTH	TAG NUMBER	% Mo	% Cu	% Zn	% Pb	% Ag	COMMENTS
<i>0-40' Overburden</i>								
	40-50	4306	.02					
	50-60	7	.01					
	60-70	8	.02					
	70-80	9	.01					
	80-90	4300	.01					
	90-100	1	.01					
	100-110	2	.01					
	110-120	3	.01					
	120-130	4	.01					
	130-140	5	.01					
	140-150	6	.01					
	150-160	7	.01					
	160-170	8	.01					

GRID Section 2900E

CANEX PLACER LIMITED ENDAKO MINES DIVISION

HOLE No. R159
SHEET No. 1 of 2

LOCATION GRL 3540 N

BEARING _____

LATITUDE 74520 N

LOGGED BY AJP

DATE COLLARED 1/11/77

LENGTH 300'

DEPARTURE 20710 E

DATE _____

DATE COMPLETED 1/11/77

DIP -90°

ELEVATION 3105

ROCK TYPE AND ALTERATION	SAMPLE WIDTH	TAG NUMBER	%Mo	%Cu	%Zn	%Pb	%Ag	COMMENTS
<i>0-40' Overburden</i>								
	40-50	4332	Tr.					
	50-60	3	.01					
	60-70	4	Tr.					
	70-80	5	.01					
	80-90	6	.01					
	90-100	7	.02					
	100-110	8	.01					
	110-120	9	.01					
	120-130	4340	.01					
	130-140	1	.01					
	140-150	2	.01					
	150-160	3	Tr.					
	160-170	4	Tr.					

GRID Section 2900E

CANEX PLACER LIMITED ENDAKO MINES DIVISION

HOLE No. R160SHEET No. 1 of 2LOCATION GRI + 3875 N

BEARING _____

LATITUDE 34825 NLOGGED BY ATPDATE COLLARED 2/11/77LENGTH 300'DEPARTURE 20590E

DATE _____

DATE COMPLETED 2/11/77DIP -90°ELEVATION 3075

ROCK TYPE AND ALTERATION	SAMPLE WIDTH	TAG NUMBER	% Mo	% Cu	% Zn	% Pb	% Ag	COMMENTS
<i>0-60' Overburden</i>								
	60-70	12758	.01					
	70-80	9	.01					
	80-90	12760	.01					
	90-100	1	.01					
	100-110	2	.01					
	110-120	3	.01					
	120-130	4	.01					
	130-140	5	.03					
	140-150	6	.02					
	150-160	7	.02					
	160-170	8	.01					

GRID Section 3100E

CANEX PLACER LIMITED ENDAKO MINES DIVISION

HOLE No. R161SHEET No. 1 of 2LOCATION BRL 3980 N

BEARING _____

LATITUDE 34890 NLOGGED BY AJPDATE COLLARED 2/11/77LENGTH 300'DEPARTURE 20900E

DATE _____

DATE COMPLETED 2/11/77DIP -90°ELEVATION 3060'

ROCK TYPE AND ALTERATION	SAMPLE WIDTH	TAG NUMBER	% Mo	% Cu	% Zn	% Pb	% Ag	COMMENTS
0-40' Overburden	40-50	12782	.10					
	50-60	3	.04					
	60-70	4	.02					
	70-80	5	.02					
	80-90	6	.02					
	90-100	7	.01					
	100-110	8	.02					
	110-120	9	.02					
	120-130	12780	.02					
	130-140	1	.02					
	140-150	2	.02					
	150-160	3	.02					
	160-170	4	.02					

GRID Section 3100E

CANEX PLACER LIMITED ENDAKO MINES DIVISION

HOLE No. R 162SHEET No. 1 of 2LOCATION GRL 3680 N

BEARING _____

LATITUDE 74600 NLOGGED BY AJPDATE COLLARED 3/10/77LENGTH 300'DEPARTURE 20850 E

DATE _____

DATE COMPLETED 3/10/77DIP -90°ELEVATION 3085

ROCK TYPE AND ALTERATION	SAMPLE WIDTH	TAG NUMBER	% Mo	% Cu	% Zn	% Pb	% Ag	COMMENTS
<u>0-40' Overburden</u>								
	<u>40-50</u>	<u>12808</u>	<u>.01</u>					
	<u>50-60</u>	<u>9</u>	<u>.01</u>					
	<u>60-70</u>	<u>12810</u>	<u>.02</u>					
	<u>70-80</u>	<u>1</u>	<u>.02</u>					
	<u>80-90</u>	<u>2</u>	<u>.02</u>					
	<u>90-100</u>	<u>3</u>	<u>.02</u>					
	<u>100-110</u>	<u>4</u>	<u>.03</u>					
	<u>110-120</u>	<u>5</u>	<u>.05</u>					
	<u>120-130</u>	<u>6</u>	<u>.02</u>					
	<u>130-140</u>	<u>7</u>	<u>.02</u>					
	<u>140-150</u>	<u>8</u>	<u>.02</u>					
	<u>150-160</u>	<u>9</u>	<u>.03</u>					
<u>160-170</u>	<u>12820</u>	<u>.02</u>						

