

CANADIAN SUPERIOR EXPLORATION LIMITED

DIAMOND DRILLING REPORT

on the

COMET PROPERTY

November 10, 1977

CANADIAN SUPERIOR EXPLORATION LIMITED

DIAMOND DRILLING REPORT

on the
COMET PROPERTY

LOCATION: 5 miles West of Kamloops, B.C.

Lat. $50^{\circ} 40'$ Long. $120^{\circ} 27'$

N.T.S. 92 I/9W

CLAIM NAMES:

MINT Fr., (L. 1342), CON VERDANT (L. 1341), IRON MASK
(L. 878), COPPER QUEEN (L. 880), CIVIL Fr. (L. 1060),
ERIN (L. 1066), EARNSCLIFFE Fr. (L. 1301), NORMA (L. 1302),
VICTOR (L. 1340), LS 10 (L. 5627), LS 11 (L. 5626),
WINTY (L. 4667), DM 61-64, 71, 73, 75, 96-99, 120, 121,
and 124, DM 2, 3, and 99 Fractions, MRO 1, 2, and 10,
MRO 3-8, 12, and 13 Fractions, RO 5, 7-26, 47-52, 61,
OR 1-15, EB 3-12, AUDRA 1 Fr., DELTA 1061, BONNIE JEAN,
REX 4 Fr., DEB 1-6, JAN 1-3, JAN 4-8 Fractions

WORK PERIOD: February 15 to October 31, 1977

J.D. Blanchflower, B.Sc.,
Kamloops, British Columbia
November 10, 1977

TABLE OF CONTENTS

SUMMARY

COST STATEMENT

DRILL LOGS

Diamond Drill Hole Logs

ILLUSTRATIONS:

Location Map (1 : 50,000)

Drill Hole Plan (1" = 400')

SUMMARY

The Comet property is an irregularly - shaped block of mineral claims measuring approximately 3 miles by 2.5 miles located on the western boundary of the City of Kamloops in south central British Columbia. On April 1, 1976, Canadian Superior Exploration Limited negotiated the rights of mineral exploration from the property owners: Comet Industries, Initial Developers, and Davenport Industries.

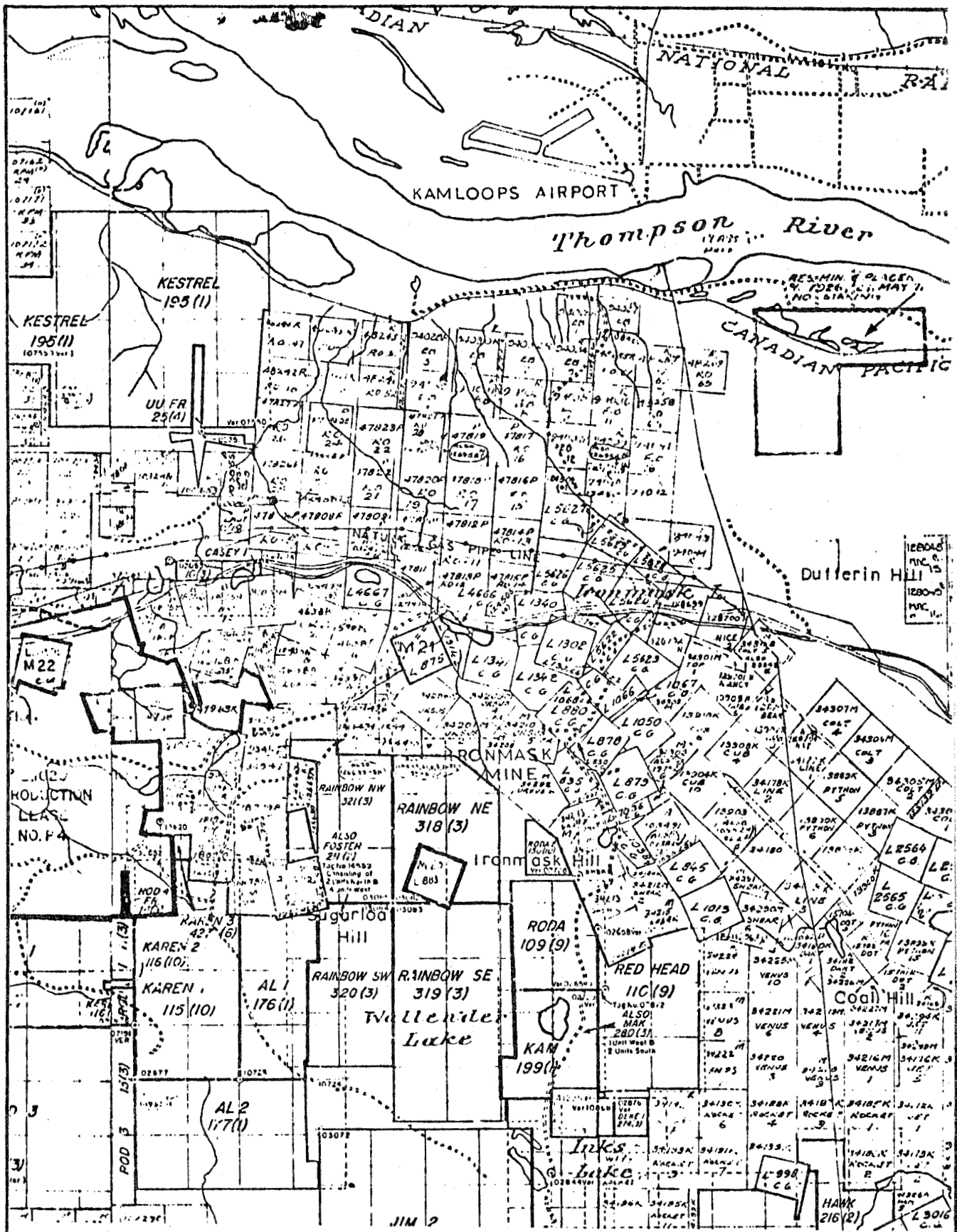
The property consists of 112 located mineral claims, 25 Crown granted mineral claims and 1 mineral lease. Ninety-nine located mineral claims and 12 Crown granted mineral claims have been grouped into the Winty, Erin, and Mint groups of mineral claims.

Previous work has included: underground mining, magnetometer surveys, I.P. surveys, geochemical surveys, geological mapping, and over 106,000 feet of combined diamond, rotary and percussion drilling.

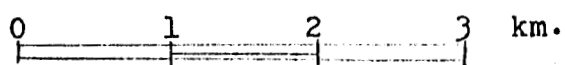
The present property covers many old showings including Lucky Strike, Iron Mask, Erin, Larsen, Iron Cap, and DM. Copper mineralization occurs along the northeastern edge of the Upper Triassic Iron Mask batholith where either major fault structures have deformed dioritic and serpentinized basaltic rocks or where microdiorite and micromonzonite porphyry has intruded.

Typical alteration products in the area of chalcopyrite mineralization include epidote, chlorite, potassic feldspar and albite.

During 1977 Canadian Superior undertook a diamond drilling program involving 34 diamond drill holes totalling 18,841 feet or 5,727.6 meters. The purpose of this program was to evaluate known mineralized showings and test anomalous areas not previously drilled. Work was contracted to J.T. Thomas Diamond Drilling Limited. Total cost of the project for 1977 is \$203,697.50.



Scale: 1: 50,000



CANADIAN SUPERIOR EXPLORATION LIMITED

LOCATION MAP
Comet Property
Kamloops M.D., B.C.

DR'T: J.D.B. SCALE: DATE: 10/11/77

COST STATEMENT

In support of an Affidavit on Application to Record Work on the Winty, Erin, and Mint groups of mineral claims, Kamloops Mining Division.

Diamond Drilling costs from February 15 to October 31, 1977.

Diamond Drilling

a) BQ: 7,107 feet @ \$10.50 / ft.	\$ 74,623.50
b) NQ: 11,734 feet @ \$11.00 / ft.	<u>\$129,074.00</u>
Total Direct Diamond Drilling Cost	\$203,697.50

Diamond Drilling to be applied, as follows:

Winty Group	\$ 9,300.00
Erin Group	\$ 47,100.00
Mint Group	<u>\$ 51,200.00</u>
Total Applied Diamond Drilling Cost	\$107,600.00


CERTIFICATE

I, J. Douglas Blanchflower, of the City of Kamloops, in the Province of British Columbia, do hereby certify:

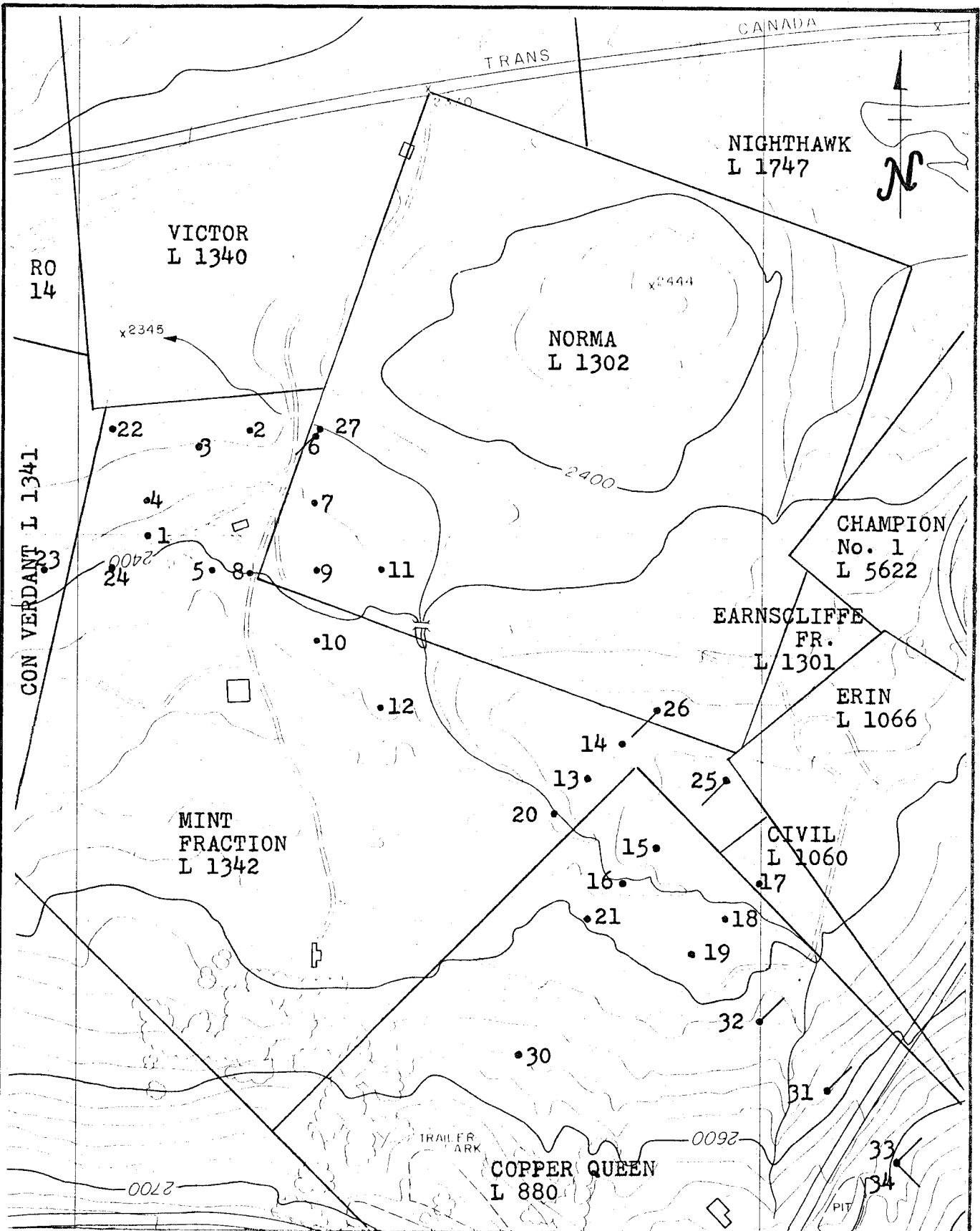
That I am a practicing Geologist and employed by Canadian Superior Exploration Limited, with offices located at 2201 - 1177 West Hastings Street, Vancouver, British Columbia.

I further certify:

1. That I am a graduate of the University of British Columbia (1971) and hold a B. Sc., degree in Geology.
2. I have been practising my profession for the past six years.
3. This report is based on information obtained by the writer from personal supervision of the diamond drill program.

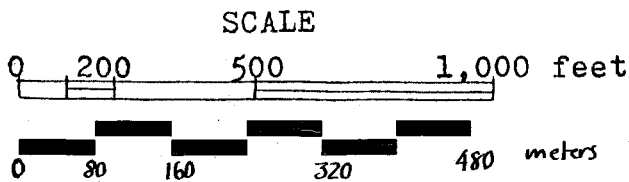

J.D. Blanchflower, B.Sc.,
Geologist

Kamloops, B.C.
November 10, 1977



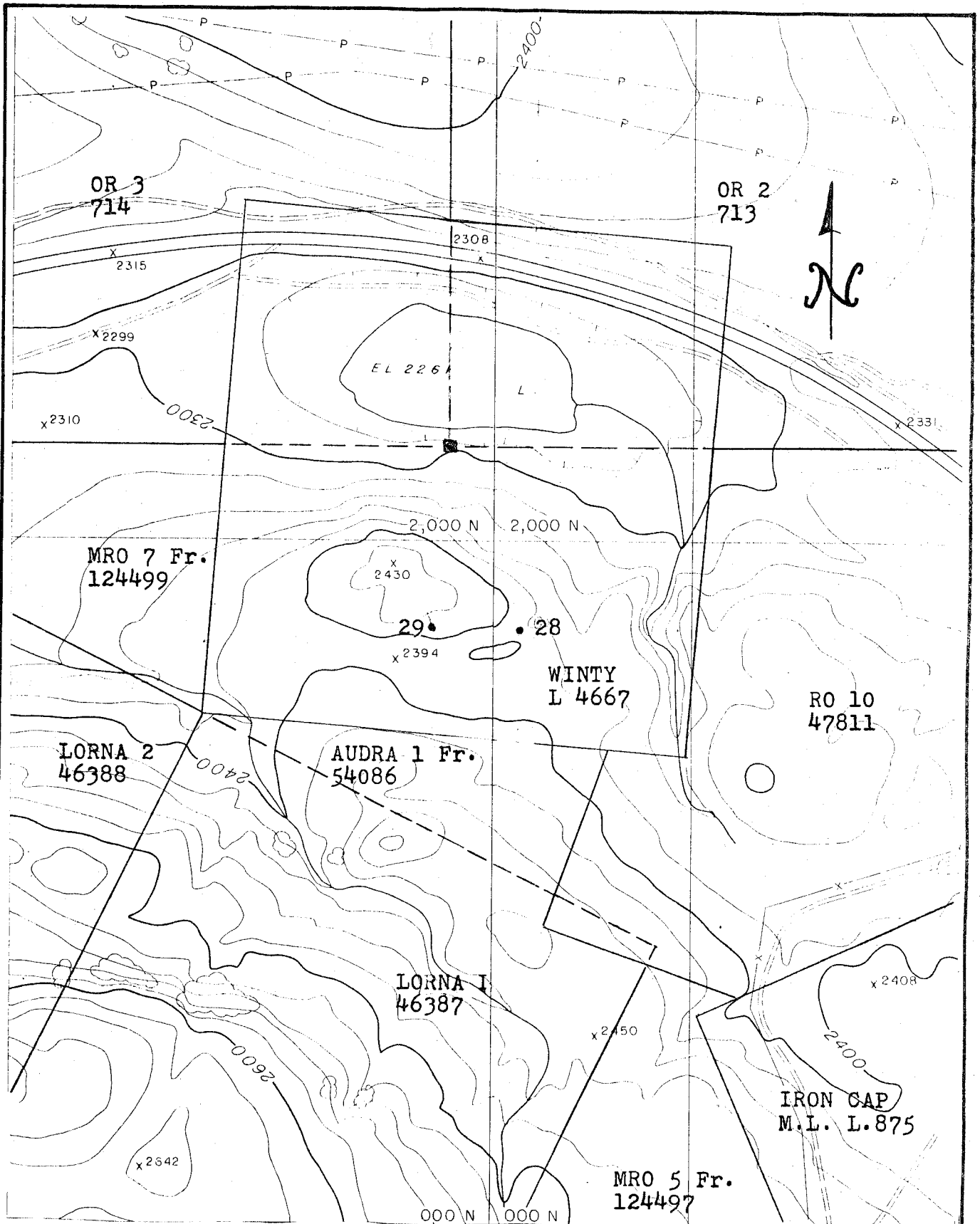
● 1977 Diamond Drill Hole

CANADIAN SUPERIOR EXPLORATION LIMITED

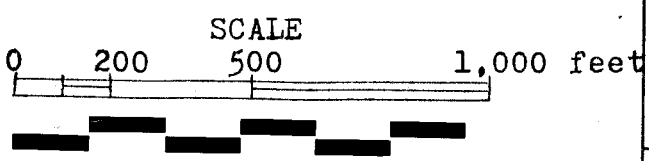


1977 DRILL HOLE PLAN
Comet Property
Kamloops M.D., B.C.

DRAFT: J.D.B. SCALE: 1"=400' DATE: 10/11/77



• 1977 Diamond Drill Hole



CANADIAN SUPERIOR EXPLORATION LIMITED

1977 DRILL HOLE PLAN
Comet Property
Kamloops M.D., B.C.

DRFT: J.D.B. SCALE 1"=400' DATE: 10/11/77

CANADIAN SUPERIOR EXPLORATION LIMITED
DRILL LOG

Project: COMET Hole Size: BQ Hole No.: D.D.H. 77-1
 Claim No.: Mint Fraction
 Date Started: February 15, 1977 Type Drill: Longyear 38 Collar Elevation: 2,386.4 ft. South
 Date Completed: February 17, 1977 Contractor: J.T. Thomas Latitude: 4.8 East
 Total Depth: 406 ft. or 123.75 m. Logged By: J.D. Blanchflower Departure: 201.4 East
 Cased To 23 ft. or 7 m. Sheet No. 1 of 1 Inclination: -90°
 Casing Pulled: Yes No Core Stored At: Comet Warehouse Bearing: _____

Dip and Azimuth Tests: Acid Test at 406' : -87°

FROM	TO	THICKNESS	% RECOVERY	GEOLOGIC DESCRIPTION AND REMARKS	INTERVAL SAMPLED
0	23'	23'		Overburden	
23'	305'	282'		Cherry Creek monzodiorite - pervasively saussuritized with minor Kf veining	
305'	313'	8'		Brecciated zone of Picrite and Cherry Creek monzodiorite.	
313'	317'	4'		Picrite - dark green, serpentized basalt.	
317'	342'	25'		Brecciated zone of Picrite and Cherry Creek monzonite.	
342'	406'	64'		Picrite - light to dark green, sheared basalt.	
				End of Hole at 406 ft. or 123.75 m.	

CANADIAN SUPERIOR EXPLORATION LIMITED
DRILL LOG

Project: COMET Hole Size: BQ Hole No.: D.D.H. 77-2
 Claim No.: Mint Fraction
 Date Started: February 17, 1977 Type Drill: Longyear 38 Collar Elevation: 2,354.1 ft.
 Date Completed: February 18, 1977 Contractor: J.T. Thomas Latitude: 298.6 North
 Total Depth: 529.5 ft. or 161.4 m. Logged By: J.D. Blanchflower Departure: 500.7 East
 Cased To 25 ft. or 7.62 m. Sheet No. 1 of 1 Inclination: -90°
 Casing Pulled: Yes No Core Stored At: Comet Warehouse Bearing: _____

Dip and Azimuth Tests: Acid test at 500 ft. : -88.5°

FROM	TO	THICKNESS	% RECOVERY	GEOLOGIC DESCRIPTION AND REMARKS	INTERVAL SAMPLED
0	25'	25'		Overburden	
25'	177'	152'		Cherry Creek monzodiorite to micromonzonite - locally albitized	
177'	180'	3'		Picrite - dark green, serpentized basalt.	
180'	194'	14'		Cherry Creek monzodiorite - intensely albitized	
194'	198'	4'		Picrite - drk. green/black with calcite veining	
198'	200'	2'		Cherry Creek monzodiorite - intensely albitized.	
200'	529.5'	329.5'		Picrite - drk. green/black, locally serpentized	
				End of Hole at 529.5 ft. or 161.4 m.	

CANADIAN SUPERIOR EXPLORATION LIMITED
DRILL LOG

Project: COMET Hole Size: NQ Hole No.: D.D.H. 77-3
 Claim No.: Mint Fraction
 Date Started: February 18, 1977 Type Drill: Longyear 38 Collar Elevation: 2,357.8 ft.
 Date Completed: February 20, 1977 Contractor: J.T. Thomas Latitude: 256.8 North
 Total Depth: 504 ft. or 153.62 m. Logged By: J.D. Blanchflower Departure: 351.6 East
 Cased To 16 ft. or 4.88 m. Sheet No. 1 of 1 Inclination: -90°
 Casing Pulled: Yes No Core Stored At: Comet Warehouse Bearing: _____

Dip and Azimuth Tests: Acid test at 504 ft. : -87°

FROM	TO	THICKNESS	% RECOVERY	GEOLOGIC DESCRIPTION AND REMARKS	INTERVAL SAMPLED
0	16'	16'		Overburden	
16'	141'	125'		Cherry Creek microdiorite/monzodiorite - moderately saussuritized	
141'	177'	36'		Picrite - dark green, well sheared basalt	
177'	254'	77'		Cherry Creek monzodiorite - saussuritized with later albite veining	
254'	504'	250'		Picrite intruded by Cherry Creek monzodiorite dykes	
				End of Hole at 504 ft. or 153.62 m.	

CANADIAN SUPERIOR EXPLORATION LIMITED

DRILL LOG

Project: COMET Hole Size: BQ Hole No.: D.D.H. 77-6
 Claim No.: Norma
 Date Started: February 24, 1977 Type Drill: Longyear 38 Collar Elevation: 2,361.1 ft.
 Date Completed: February 26, 1977 Contractor: J.T. Thomas Latitude: 290.2 North
 Total Depth: 544 ft. or 165.8 m. Logged By: J.D. Blanchflower Departure: 697.8 East
 Cased To 55 ft. or 16.76 m. Sheet No. 1 of 1 Inclination: -90°
 Casing Pulled: Yes No Core Stored At: Comet Warehouse Bearing: _____

Dip and Azimuth Tests: Acid test at 544 ft. : -90°

FROM	TO	THICKNESS	% RECOVERY	GEOLOGIC DESCRIPTION AND REMARKS	INTERVAL SAMPLED
0	55'	55'		Overburden	
55'	123'	68'		Picrite with minor Cherry Creek monzodiorite dykes	
123'	144'	21'		Cherry Creek monzonite - poorly altered	
144'	523'	379'		Picrite - dark green/black, well sheared basalt	
523'	544'	21'		Cherry Creek monzodiorite - very minor Ep, Cl veining	
				End of Hole at 544 ft. or 165.8 m.	

CANADIAN SUPERIOR EXPLORATION LIMITED

DRILL LOG

Project: COMET Hole Size: BQ Hole No.: D.D.H. 77-8

Claim No.: Mint Fraction

Date Started: March 3, 1977 Type Drill: Longyear 38 Collar Elevation: 2,398.2 ft.

Date Completed: March 5, 1977 Contractor: J.T. Thomas Latitude: 101.1 South

Total Depth: 472 ft. or 143.87 m. Logged By: J.D. Blanchflower Departure: 497.7 East

Cased To 35 ft. or 10.67 m. Sheet No. 1 of 1 Inclination: -90°

Casing Pulled: Yes No Core Stored At: Comet Warehouse Bearing: _____

Dip and Azimuth Tests: Acid test at 472 ft. : -87°

FROM	TO	THICKNESS	% RECOVERY	GEOLOGIC DESCRIPTION AND REMARKS	INTERVAL SAMPLED
0	35'	35'		Overburden	
35'	178'	143'		Cherry Creek monzodiorite/micromonzonite - very poorly altered	
178'	188'	10'		Picrite - intensely sheared (50° c.a.), serpentinized	
188'	204'	16'		Cherry Creek monzodiorite - intensely sheared with Kf, Ca infilling	
204'	213'	9'		Picrite - dark green basalt with Ca veining	
213'	218'	5'		Cherry Creek diorite - very pyritic	
218'	472'	254'		Picrite - dark green/grey, locally well-sheared basalt	
				End of Hole at 472 ft. or 143.87 m.	

CANADIAN SUPERIOR EXPLORATION LIMITED

DRILL LOG

Project: COMET Hole Size: NQ (0-380'), BQ (380'-875') Hole No.: D.D.H. 77-9
 Claim No.: Norma
 Date Started: March 5, 1977 Type Drill: Longyear 38 Collar Elevation: 2,383.8 ft.
 Date Completed: March 8, 1977 Contractor: J.T. Thomas Latitude: 102.8 South
 Total Depth: 875 ft. or 266.7 m. Logged By: J.D. Blanchflower Departure: 702.0 East
 Cased To 30 ft. or 9.14 m. Sheet No. 1 of 1 Inclination: -90°
 Casing Pulled: Yes No Core Stored At: Comet Warehouse Bearing: _____

Dip and Azimuth Tests: Acid test at 875 ft. : -90°

FROM	TO	THICKNESS	% RECOVERY	GEOLOGIC DESCRIPTION AND REMARKS	INTERVAL SAMPLED
0	30'	30'		Overburden	
30'	199'	169'		Cherry Creek monzodiorite/micromonzonite - locally albitized	
199'	219'	20'		Picrite - dark green to black, poorly fractured basalt	
219'	255'	36'		Cherry Creek micromonzonite - locally biotitized	
255'	875'	620'		Picrite - dark green (sheared and serpentized) to black basalt	
				End of Hole at 875 ft. or 266.7 m.	

CANADIAN SUPERIOR EXPLORATION LIMITED
DRILL LOG

Project: COMET Hole Size: NQ Hole No.: D.D.H. 77-11
 Claim No.: Norma
 Date Started: March 11, 1977 Type Drill: Longyear 38 Collar Elevation: 2,386.7 ft.
 Date Completed: March 13, 1977 Contractor: J.T. Thomas Latitude: 103.6 South
 Total Depth: 714 ft. or 217.63 m. Logged By: J.D. Blanchflower Departure: 897.3 East
 Cased To 76 ft. or 23.17 m. Sheet No. 1 of 1 Inclination: -90°
 Casing Pulled: Yes No Core Stored At: Comet Warehouse Bearing: _____

Dip and Azimuth Tests: Acid test at 714 ft. : -88.5°

FROM	TO	THICKNESS	% RECOVERY	GEOLOGIC DESCRIPTION AND REMARKS	INTERVAL SAMPLED
0	76'	76'		Overburden	
76'	229'	153'		Picrite - dark grey to black, poorly fractured basalt	
229'	359'	130'		Cherry Creek monzodiorite/micromonzonite - locally biotitized	
359'	548'	189'		Picrite - black basalt, locally well veined with gypsum	
548'	714'	166'		Cherry Creek micromonzonite - locally well veined with Kf and Ca	
				End of Hole at 714 ft. or 217.63 m.	

CANADIAN SUPERIOR EXPLORATION LIMITED
DRILL LOG

Project: COMET Hole Size: NQ Hole No.: D.D.H. 77-12
 Claim No.: Mint Fraction
 Date Started: March 13, 1977 Type Drill: Longyear 38 Collar Elevation: 2,417.1 ft.
 Date Completed: March 17, 1977 Contractor: J.T. Thomas Latitude: 500.3 South
 Total Depth: 705 ft. or 214.88 m. Logged By: J.D. Blanchflower Departure: 903.5 East
 Cased To 76 ft. or 23.17 m. Sheet No. 1 of 1 Inclination: -90°
 Casing Pulled: Yes No Core Stored At: Comet Warehouse Bearing: _____

Dip and Azimuth Tests: Acid test at 705 ft. : -87°

FROM	TO	THICKNESS	% RECOVERY	GEOLOGIC DESCRIPTION AND REMARKS	INTERVAL SAMPLED
0	76'	76'		Overburden	
76'	80'	4'		Cherry Creek monzodiorite - mafic-rich	
80'	169'	89'		Picrite - dark green (serpentinized) to black basalt	
169'	200'	31'		Cherry Creek diorite dyke - dark green, aphanitic	
200'	705'	505'		Picrite - dark green/black basalt intruded by minor dioritic dykes	
				End of Hole at 705 ft. or 214.88 m.	

CANADIAN SUPERIOR EXPLORATION LIMITED
DRILL LOG

Project: COMET Hole Size: BQ Hole No.: D.D.H. 77-14
 Claim No.: Mint Fraction
 Date Started: May 2, 1977 Type Drill: Longyear 38 Collar Elevation: 2,473.0 ft.
 Date Completed: May 3, 1977 Contractor: J.T. Thomas Latitude: 601.7 South
 Total Depth: 604 ft. or 184.1 m. Logged By: J.D. Blanchflower Departure: 1,601.9 East
 Cased To 74 ft. or 22.55 m. Sheet No. 1 of 1 Inclination: -90°
 Casing Pulled: Yes No Core Stored At: Comet Warehouse Bearing: _____

Dip and Azimuth Tests: Acid test at 604 ft. : -88.5°

FROM	TO	THICKNESS	% RECOVERY	GEOLOGIC DESCRIPTION AND REMARKS	INTERVAL SAMPLED
0	74'	74'		Overburden	
74'	258'	184'		Cherry Creek monzodiorite - variably saussuritized and albitized	
258'	565'	307'		Picrite - dark green to black basalt with gypsum veining	
565'	604'	39'		Cherry Creek monzodiorite - Kf and Anhydrite veining	
				End of Hole at 604 ft. or 184.1 m.	

CANADIAN SUPERIOR EXPLORATION LIMITED
DRILL LOG

Project: COMET Hole Size: BQ Hole No.: D.D.H. 77-15
 Claim No.: Copper Queen
 Date Started: May 3, 1977 Type Drill: Longyear 38 Collar Elevation: 2,479.5 ft.
 Date Completed: May 5, 1977 Contractor: J.T. Thomas Latitude: 903.5 South
 Total Depth: 714 ft. or 217.63 m. Logged By: J.D. Blanchflower Departure: 1,702.5 East
 Cased To 75 ft. or 22.86 m. Sheet No. 1 of 1 Inclination: -90°
 Casing Pulled: Yes No Core Stored At: Comet Warehouse Bearing: _____

Dip and Azimuth Tests: Acid test at 714 ft. : -90°

FROM	TO	THICKNESS	% RECOVERY	GEOLOGIC DESCRIPTION AND REMARKS	INTERVAL SAMPLED
0	75'	75'		Overburden	
75'	411'	336'		Cherry Creek/Pothook monzodiorite - locally albitized	
411'	430'	19'		Picrite - light green/grey, well-sheared basalt	
430'	452'	22'		Cherry Creek monzodiorite - with gypsum veining	
452'	488'	36'		Picrite - dark grey to black basalt with gypsum veining	
488'	498'	10'		Pothook diorite - mafic-rich diorite dyke	
498'	564'	66'		Picrite - dark grey to black basalt with gypsum fracturing infilling	
564'	614'	50'		Cherry Creek monzodiorite - mafic-rich (Hb), gypsum veining	
614'	651'	37'		Cherry Creek/Pothook monzodiorite - gypsum, biotite veining	
651'	714'	63'		Black Picrite with several minor Cherry Creek monzonite dykes	
				End of Hole at 714 ft. or 217.63 m.	

CANADIAN SUPERIOR EXPLORATION LIMITED

DRILL LOG

Project: COMET Hole Size: BQ Hole No.: D.D.H. 77-16
 Claim No.: Copper Queen
 Date Started: May 5, 1977 Type Drill: Longyear 38 Collar Elevation: 2,478.1 ft.
 Date Completed: May 6, 1977 Contractor: J.T. Thomas Latitude: 1,004.4 South
 Total Depth: 555 ft. or 169.16 m. Logged By: J.D. Blanchflower Departure: 1,596.0 East
 Cased To 75 ft. or 22.86 m. Sheet No. 1 of 1 Inclination: -90°
 Casing Pulled: Yes No Core Stored At: Comet Warehouse Bearing: _____

Dip and Azimuth Tests: Acid test at 555 ft. : -88.5°

FROM	TO	THICKNESS	% RECOVERY	GEOLOGIC DESCRIPTION AND REMARKS	INTERVAL SAMPLED
0	75'	75'		Overburden	
75'	119'	44'		Picrite - dark grey/black basalt with Gy fracture fillings	
119'	351'	232'		Cherry Creek/Pothook diorite/monzodiorite - pervasive saussuritization	
351'	430'	79'		Picrite - dark grey to black basalt with intense Gy veining	
430'	540'	110'		Cherry Creek/Pothook diorite/monzodiorite - well albitized	
540'	555'	15'		Pothook Diorite - Ep and/or Kf veining	
				End of Hole at 555 ft. or 169.16 m.	

CANADIAN SUPERIOR EXPLORATION LIMITED
DRILL LOG

Project: COMET Hole Size: BQ Hole No.: D.D.H. 77-17
 Claim No.: Civil
 Date Started: May 6, 1977 Type Drill: Longyear 38 Collar Elevation: 2,490.5 ft.
 Date Completed: May 7, 1977 Contractor: J.T. Thomas Latitude: 1,002.4 South
 Total Depth: 414 ft. or 126.19 m. Logged By: J.D. Blanchflower Departure: 1,996.4 East
 Cased To 57 ft. or 17.37 m. Sheet No. 1 of 1 Inclination: -90°
 Casing Pulled: Yes No Core Stored At: Comet Warehouse Bearing: _____

Dip and Azimuth Tests: Acid test at 414 ft. : -90°

FROM	TO	THICKNESS	% RECOVERY	GEOLOGIC DESCRIPTION AND REMARKS	INTERVAL SAMPLED
0	57'	57'		Overburden	
57'	187'	130'		Cherry Creek/Pothook diorite to monzodiorite - locally albitized	
187'	256'	69'		Picrite - dark green (serpentinized) to black basalt	
256'	269'	13'		Cherry Creek diorite dyke - with intense Gy veining	
269'	275'	6'		Black Picrite - intensely sheared basalt	
275'	414'	139'		Cherry Creek monzodiorite/monzonite - poorly fractured	
				End of Hole at 414 ft. or 126.19 m.	

CANADIAN SUPERIOR EXPLORATION LIMITED
DRILL LOG

Project: COMET Hole Size: NQ Hole No.: D.D.H. 77-22
 Claim No.: Mint Fraction
 Date Started: May 12, 1977 Type Drill: Longyear 38 Collar Elevation: 2,347.6 ft.
 Date Completed: May 13, 1977 Contractor: J.T. Thomas Latitude: 297.6 North
 Total Depth: 504 ft. or 153.62 m. Logged By: J.D. Blanchflower Departure: 100.1 East
 Cased To 23 ft. or 7.01 m. Sheet No. 1 of 1 Inclination: -90°
 Casing Pulled: Yes No Core Stored At: Comet Warehouse Bearing: _____

Dip and Azimuth Tests: Acid test at 504 ft. : -90°

FROM	TO	THICKNESS	% RECOVERY	GEOLOGIC DESCRIPTION AND REMARKS	INTERVAL SAMPLED
0	21'	21'		Overburden	
21'	65'	44'		Cherry Creek monzodiorite - moderately well albitized	
65'	145'	80'		Picrite - dark green/grey, intensely sheared basalt	
145'	175'	30'		Cherry Creek monzodiorite - mafic-rich (Hb)	
175'	220'	45'		Picrite - medium green, aphanitic basalt	
220'	399'	179'		Cherry Creek/Pothook diorite to monzodiorite - highly albitized	
399'	421'	22'		Cherry Creek monzodiorite - intense Ep and/or Gy veining	
421'	504'	83'		Picrite - dark grey/black, gypsum-veined basalt	
				End of Hole at 504 ft. or 153.62 m.	

CANADIAN SUPERIOR EXPLORATION LIMITED

DRILL LOG

Project: COMET Hole Size: NQ Hole No.: D.D.H. 77-23
 Claim No.: Con Verdant
 Date Started: May 13, 1977 Type Drill: Longyear 38 Collar Elevation: 2,384.5 ft.
 Date Completed: May 16, 1977 Contractor: J.T. Thomas Latitude: 102.4 South
 Total Depth: 503 ft. or 153.31 m. Logged By: J.D. Blanchflower Departure: 99.1 West
 Cased To 17 ft. or 5.18 m. Sheet No. 1 of 1 Inclination: -90°
 Casing Pulled: Yes No Core Stored At: Comet Warehouse Bearing: _____

Dip and Azimuth Tests: Acid test at 503 ft. : -88.5°

FROM	TO	THICKNESS	% RECOVERY	GEOLOGIC DESCRIPTION AND REMARKS	INTERVAL SAMPLED
0	17'	17'		Overburden	
17'	87'	70'		Cherry Creek monzodiorite - intense Ca veining	
87'	140'	53'		Cherry Creek monzonite/syenite - locally albitized	
140'	215'	75'		Cherry Creek monzodiorite - Ca and/or Gy veining	
215'	299'	84'		Picrite - intensely sheared plus cut by Cherry Creek dykes	
299'	377'	78'		Cherry Creek monzodiorite - well fractured with Ca, Gy infillings	
377'	387'	10'		Picrite - sheared with Gy infilling	
387'	472'	85'		Cherry Creek monzodiorite - Kf, Gy veining	
472'	503'	31'		Picrite - dark grey/black, well sheared basalt with Ca and Gy veining	
				End of Hole at 503 ft. or 153.3 m.	

CANADIAN SUPERIOR EXPLORATION LIMITED
DRILL LOG

Project: COMET Hole Size: NQ Hole No.: D.D.H. 77-25
 Claim No.: Erin
 Date Started: May 18, 1977 Type Drill: Longyear 38 Collar Elevation: 2,483.0 ft.
 Date Completed: May 22, 1977 Contractor: J.T. Thomas Latitude: 704.9 South
 Total Depth: 750 ft. or 228.6 m. Logged By: J.D. Blanchflower Departure: 1,894.4 East
 Cased To 124 ft. or 37.79 m. Sheet No. 1 of 1 Inclination: -45°
 Casing Pulled: Yes No Core Stored At: Comet Warehouse Bearing: 225°

Dip and Azimuth Tests: Acid test at 200' (-46°), and 750' (-45°)

FROM	TO	THICKNESS	% RECOVERY	GEOLOGIC DESCRIPTION AND REMARKS	INTERVAL SAMPLED
0	98'	98'		Overburden	
98'	110'	12'		Cherry Creek diorite - pervasive saussuritization	
110'	130'	20'		Picrite - black, well-sheared basalt	
130'	750'	620'		Cherry Creek/Pothook diorite/monzonite - locally albitized	
				End of Hole at 750 ft. or 228.6 m.	

CANADIAN SUPERIOR EXPLORATION LIMITED
DRILL LOG

Project: COMET Hole Size: NQ Hole No.: D.D.H. 77-27
 Claim No.: Norma
 Date Started: May 25, 1977 Type Drill: Longyear 38 Collar Elevation: 2,360.1 ft.
 Date Completed: May 27, 1977 Contractor: J.T. Thomas Latitude: 303.8 North
 Total Depth: 651 ft. or 198.42 m. Logged By: J.D. Blanchflower Departure: 703.7 East
 Cased To 65 ft. or 19.81 m. Sheet No. 1 of 1 Inclination: -45°
 Casing Pulled: Yes No Core Stored At: Comet Warehouse Bearing: 225°

Dip and Azimuth Tests: Acid test at 100' (-45°), 300' (-45°), and 651' (-44°)

FROM	TO	THICKNESS	% RECOVERY	GEOLOGIC DESCRIPTION AND REMARKS	INTERVAL SAMPLED
0	65'	65'		Overburden	
65'	101'	36'		Cherry Creek monzodiorite - minor Ca and/or Kf veining	
101'	130'	29'		Picrite - intensely sheared, dark green to black basalt	
130'	288'	158'		Cherry Creek diorite - saussuritized and albitized	
288'	380'	92'		Cherry Creek monzonite - saussuritized plus Kf and/or Ca veining	
380'	455'	75'		Cherry Creek diorite - saussuritized and albitized	
455'	651'	196'		Picrite - dark green to black, well-sheared basalt	
				End of Hole at 651 ft. or 198.42 m.	

CANADIAN SUPERIOR EXPLORATION LIMITED
DRILL LOG

Project: COMET Hole Size: BQ Hole No.: D.D.H. 77-29
 Claim No.: Winty
 Date Started: September 15, 1977 Type Drill: Longyear 38 Collar Elevation: 2,400.1 ft.
 Date Completed: September 17, 1977 Contractor: J.T. Thomas Latitude: 1,749.9 North
 Total Depth: 392 ft. or 119.48 m. Logged By: J.D. Blanchflower Departure: 4,760.2 West
 Cased To: 43 ft. or 13.11 m. Sheet No. 1 of 1 Inclination: -90°
 Casing Pulled: Yes No Core Stored At: Comet Warehouse Bearing: _____
 Dip and Azimuth Tests: Acid test at 392 ft. : -90°

FROM	TO	THICKNESS	% RECOVERY	GEOLOGIC DESCRIPTION AND REMARKS	INTERVAL SAMPLED
0	43'	43'		Overburden	
43'	123'	80'		Cherry Creek monzonite/syenite - Al and Kf veining	
123'	210'	87'		Cherry Creek monzodiorite - Al and Kf veining	
210'	274'	64'		Cherry Creek monzonite/syenite - Al and/or Ep veining	
274'	392'	118'		Cherry Creek monzodiorite - Al, Ep and/or Kf veining	
				End of Hole at 392 ft. or 119.48 m.	

CANADIAN SUPERIOR EXPLORATION LIMITED
DRILL LOG

Project: COMET Hole Size: NQ Hole No.: D.D.H. 77-32
 Claim No.: Copper Queen
 Date Started: September 21, 1977 Type Drill: Longyear 38 Collar Elevation: 2,526.0 ft.
 Date Completed: September 22, 1977 Contractor: J.T. Thomas Latitude: 1,400.0 South
 Total Depth: 555 ft. or 169.16 m. Logged By: J.D. Blanchflower Departure: 2,000.0 East
 Cased To: 111 ft. or 33.83 m. Sheet No. 1 of 1 Inclination: -45°
 Casing Pulled: Yes No Core Stored At: Comet Warehouse Bearing: 045°

Dip and Azimuth Tests: Acid test at 150' (-45°), and 555' (-44°)

FROM	TO	THICKNESS	% RECOVERY	GEOLOGIC DESCRIPTION AND REMARKS	INTERVAL SAMPLED
0	112'	112'		Overburden	
112'	115'	3'		Iron Mask diorite - poorly veined with Ep, Cl	
115'	146'	31'		Picrite/Iron Mask diorite intrusive breccia zone	
146'	210'	64'		Iron Mask diorite - minor Gy and/or Ca veining	
210'	333'	123'		Picrite/Iron Mask diorite - basalt cut by dioritic dykes	
333'	555'	222'		Iron Mask diorite - Ep, Al, and Kf veining, local Bi veining	
				End of Hole at 555 ft. or 169.16 m.	

CANADIAN SUPERIOR EXPLORATION LIMITED

DRILL LOG

Project: COMET Hole Size: NQ Hole No.: D.D.H. 77-33
 Claim No.: Copper Queen
 Date Started: September 22, 1977 Type Drill: Longyear 38 Collar Elevation: 2,703.1 ft.
 Date Completed: September 25, 1977 Contractor: J.T. Thomas Latitude: 1,795.0 South
 Total Depth: 544 ft. or 165.81 m. Logged By: J.D. Blanchflower Departure: 2,405.4 East
 Cased To: 132 ft. or 40.23 m. Sheet No. 1 of 1 Inclination: -45°
 Casing Pulled: Yes No Core Stored At: Comet Warehouse Bearing: 045°
 Dip and Azimuth Tests: Acid test at 140' (-45°), and 544' (-43°)

FROM	TO	THICKNESS	% RECOVERY	GEOLOGIC DESCRIPTION AND REMARKS	INTERVAL SAMPLED
0	132'	132'		Overburden	
132'	158'	26'		Cherry Creek diorite cross-cutting and intruding Picrite	
158'	266'	108'		Cherry Creek diorite/monzodiorite - Al, Kf, and Ep veining	
266'	490'	224'		Iron Mask diorite locally cut by Cherry Creek diorite dykes	
490'	544'	54'		Cherry Creek monzodiorite - locally albitized and epidotized	
				End of Hole at 544 ft. or 165.81 m.	

CANADIAN SUPERIOR EXPLORATION LIMITED

DRILL LOG

Project: COMET Hole Size: NQ Hole No.: D.D.H. 77-34
 Claim No.: Copper Queen
 Date Started: September 25, 1977 Type Drill: Longyear 38 Collar Elevation: 2,703.0 ft.
 Date Completed: September 29, 1977 Contractor: J.T. Thomas Latitude: 1,802.3 South
 Total Depth: 621 ft. or 189.28 m. Logged By: J.D. Blanchflower Departure: 2,406.3 East
 Cased To: 52 ft. or 15.85 m. Sheet No. 1 of 1 Inclination: -45°
 Casing Pulled: Yes No Core Stored At: Comet Warehouse Bearing: 135°
 Dip and Azimuth Tests: Acid test at 150' (-45°), 490' (-43°), and 621' (-46°)

FROM	TO	THICKNESS	% RECOVERY	GEOLOGIC DESCRIPTION AND REMARKS	INTERVAL SAMPLED
0	52'	52'		Overburden	
52'	119'	67'		Cherry Creek diorite/monzodiorite - Al, Kf, and/or Ep veining	
119'	150'	31'		Picrite/Iron Mask diorite brecciated zone - intense albitization	
150'	257'	107'		Cherry Creek monzodiorite - Kf or Al, Ep veining	
257'	621'	364'		Iron Mask diorite - Al, Kf, and/or Ep veining, locally faulted	
				End of Hole at 621 ft. or 189.28 m.	

AGREEMENT

COMET PROPERTY

BETWEEN: CANADIAN SUPERIOR EXPLORATION LIMITED
2201 - 1177 West Hastings Street
Vancouver, British Columbia

(Hereinafter referred to as the
'COMPANY' of the First Part)

AND: J.T. THOMAS DIAMOND DRILLING LTD.
P.O. Box 394
Smithers, British Columbia

(Hereinafter referred to as the
'CONTRACTOR' of the Second Part)

A. THE CONTRACTOR COVENANTS AND AGREES:

1. THAT the Contractor shall use his best endeavor to complete all holes according to the wishes of the Company, but should rock conditions prevent successful completion of the hole, the Contractor is not obliged to complete the same, but shall be paid for such incomplete holes at contract rates for the completed footage.
2. THAT the Contractor will supply his own transportation and accommodation.
3. THAT the Contractor will supply water to the drill at his own expense.
4. THAT the Contractor will not release any information regarding drill results, or access to core to any person other than the Company's representative.
5. THAT the Contractor will mobilize his equipment to and from the Comet property, prepare drill access roads and move drill equipment between sites, at his own expense.
6. THAT the Contractor will supply coreboxes at no cost to the company.
7. THAT the Contractor will absorb all cementing costs.
8. THAT the Contractor will pay the cost of drilling mud and additives required for this job.
9. THAT the Contractor shall maintain General Comprehensive Liability Insurance with minimum inclusive limits of \$750,000 covering bodily injuries and property damage and Motor Vehicle Liability with minimum inclusive limits of \$750,000. This insurance coverage shall not be reduced or cancelled during the period work is being done for the Company unless ten days prior written notice is furnished to the Company.

10. THAT the Contractor shall be responsible for and will pay promptly all dues and assessments payable under the Workmen's Compensation Act, in accordance with the laws of the Province of British Columbia, in respect of its employees.
11. THAT the Contractor agrees to indemnify and save harmless the Company and its personnel against any and all loss and expense including attorney's fees and other legal expenses, by reason of liability imposed or claimed to be imposed by law upon the Company for damages because of bodily injuries, including death, or on account of damage to property, sustained by any person or persons arising out of or in consequence of the performance of the work called for by this contract whether or not such bodily injuries, death or damage to property arise or are claimed to arise in whole or in part out of negligence or any other ground of legal liability, including violation or any duty imposed by a statute or ordinance or regulation on the part of the Contractor, their employees or agents of them.
12. THAT during the course of the work, the Contractor shall, at all times, keep the Company's premises free from accumulation of waste material or rubbish and upon completion of the work shall remove all tools, scaffoldings, surplus materials and rubbish and leave the premises in a clean condition and as near as possible to its original condition. The Contractor shall observe and comply with all applicable laws of the Province of British Columbia.
13. THAT this agreement may be altered only by written consent of both parties hereto.
14. THAT time is of the essence in this agreement.

B. THE COMPANY COVENANTS AND AGREES:

1. THAT the payment for the herein described work shall be as follows:

Ten Dollars and Fifty Cents (\$10.50) per foot for BQ ^{and} ~~or NQ~~ core drilling, ~~except when total NQ core drilling exceeds 4,000 feet the rate will be Eleven (\$11.00) Dollars per foot for NQ core drilling. The rate for overburden drilling shall be Ten Dollars and Fifty Cents (\$10.50) per foot.~~

2. THAT the Company requests the Contractor to complete a minimum of 6,000 (Six Thousand) feet of drilling and other services as set forth herein.
3. THAT the Company agrees to make payments at the rates hereinbefore specified in accordance with the terms hereinafter set out, that is: For all work done hereunder between the first and 15th day and the 16th and last day of the month, invoices shall be rendered promptly to the Company, and such invoices shall be due and payable within 15 days of receipt of an invoice by the Company.

R. L. Lammiman
Changes discussed
with R.A.D.

IN WITNESS WHEREOF these presents have been executed by the parties hereto, this 28 day of 1 A.D. 1977.

CANADIAN SUPERIOR EXPLORATION
LIMITED

W. G. Robensin
President

R. B. Bardi VICE PRESIDENT

J.T. THOMAS DIAMOND DRILLING
LTD.

Jean Thomas

Christine Thomas