

78-15-11

6611
part 1 of 2

REPORT ON DRILLING

ON

SV #1, 2 CLAIMS

KAMLOOPS M.D.

MAP 92I 6E

LATITUDE 50° 22' N

LONGITUDE 121° 02' W

FOR

LORADO MINING CORPORATION LTD.

E. Livgard P.Eng.
January 24th, 1978.

MINERAL RESOURCES BRANCH
ASSESSMENT REPORT
NO. 6611
MAP NO. PART 1 of 2

INDEX

	<u>Page</u>
Introduction	1
Miller Drilling	2
Bema Drilling	3
Conclusions	4

APPENDIX

Cost Statement

Certificate

Assay Sheets 7706 - 2251, 7710 - 1155

Maps

Claim AP M921/6E 1:50,000

Seismic Survey Map 1: 5,000

INTRODUCTION

The SV claims of Lorado Mining Corporation Ltd. consist of seven claims named SV #1 to #7 comprising 102 contiguous units. The claims are located in the Highland Valley area of Kamloops Mining Division. They cover the east side of Skuhost Creek from its confluence with Skuhun Creek. Further north they cover both sides of Skohun Creek and some of the plateau on each side. The claims can be reached via 10 miles of dirt road connecting to the Nicola Valley road, 15 miles south of Spencers Bridge.

The claims cover a part of the southern extension of the Bethsaida and Bethlehem varieties of the Guichon Batholit. This is one of the few areas of the Batholit which has not been intensively explored due to a heavy overburden cover.

MILLER DRILLING

Al Miller Percussion Drilling carried out a drill program in June 1977. The drill program was designed to test the bedrock in an area of suspected structural complexity, as interpreted from aerial photos.

The overburden in the area proved to be too deep for the drill and the holes which penetrated the overburden were on the periphery of the targets.

Hole P1 was located at Copper Creek, the major tributary to Skuhost Creek to the east. The drill was stopped at 15 meters in heavy overburden of boulders, clay and sand.

Hole P2 (120 meters south of P1) penetrated 15.25 meters of overburden and cut bedrock to 91.5 meters. The chips indicated that this was relatively fresh intrusive rock, probably of the Bethsaida variety. No mineralization was noted.

Hole P3 (1135 meters north of P1) cut 20 meters of overburden and cut bedrock to 91.5 meters. The chips indicated that the bedrock has been lightly altered to a prophylic assemblage. The rock is probably the Bethsaida intrusive. No mineralization was noted.

Hole P4 (1074 meters north of P1) cut 20 meters of overburden and cut bedrock to 82 meters. The chips indicate that the bedrock consists of Bethsaida intrusive which shows prophylic alteration. No mineralization was noted.

Hole P5 (732 meters north of P1) cut 14 meters of overburden and bedrock to a total depth of 91.5 meters. Chips indicated that the bedrock was Bethsaida intrusive showing prophylic alteration. Minor malachite and pyrite were noted in the first 3-4 meters of bedrock. The last few meters of bedrock showed considerable pink feldspar.

Hole P6 (122 meters east northeast of P1) Casing was put down to 24.5 meters and drilling was carried to 51 meters without cutting bedrock. The overburden was gravel with some boulders and clay.

Hole P7 (586 meters north of P1) cut 33 meters of sandy overburden and cut bedrock to a total depth of 91.5 meters. The chips indicate that the rock was lightly altered Bethsaida intrusive with a relatively high content of pink feldspar. No mineralization was noted.

The chips were split and a portion sent out for analysis. No significant value of copper or molybdenum was noted.

BEMA DRILLING

A program of overburden drilling was carried out by Bema Industries Ltd. in the period September 20 -22, 1977. The drill was found to be inadequate for this overburden and the program was terminated.

The holes were drilled beside the road following Copper Creek, the main tributary to Skuhost Creek from the east, from the northeast corner of SV #2 claim to the south central part of the claim where it was felt the overburden would be less than in the Skuhost Creek Valley.

- Hole 01 3.5 m. Consisted of intrusive fragments and sand.
- Hole 02 0.5 m. Intrusive fragments.
- Hole 03 4.35 m. Clay on top of fault gauge.
- Hole 04 1.5 m. Clay and boulders.
- Hole 05 0.75 m. Clay and quartz rock.
Fragments of intrusive rock.
- Hole 06 0.75 m. Brown silt and clay with intrusive fragments.
- Hole 07 3.0 m. Clay and sand.
- Hole 08 4.0 m. Clay and intrusive fragments.
- Hole 09 2.5 m. Clay and boulders.
- Hole 010 3.0 m. Silt and sand.
- Hole 011 2.0 m. Silt and sand.
- Hole 012 2.0 m. Silt and sand.
- Hole 013 2.0 m. Silt and sand.

CONCLUSIONS

The percussion drilling carried out on the property did not reach bedrock in the areas of interest. Drilling on the periphery disclosed, as expected, intrusive rocks of the Bethsaida phase. North of the area of interest these rocks have suffered apparently widespread prophylic alteration, which is encouraging. But no copper or molybdenum values of interest were obtained. The primary target area between P2 and P7 could not be drilled due to deep overburden. The seismic survey indicated depth of 30 meters to 100 meters in the area. The Lornex fault lies 120 to 150 meters west of the area drilled and the seismic survey indicates that overburden depths here are greater than 100 meters.

Overburden drilling was tried further east where it was felt that the depth of bedrock would be less. The company terminated the drilling after two days, when it was felt that the Atlas Copco plugger type drill was too light for the clay boulder type of overburden. The assay results were low and in this case meaningless.

[Handwritten signatures and initials]

COST OF WORK CARRIED OUT ON
²⁶
SV #1,2,3,4,5, #6 HIGHLAND VALLEY 1977

Cost of Miller Drilling Kamloops, B. C.	Truck Mounted Percussion Drill	
June 13th - 22nd/77 1685' x \$3.50 Disbursements	\$ 5297.50 <u>685.00</u>	\$ 6582.50
Helper and supervision : June 13th to 22nd		
A. M. Krogstad Wages 10 days	\$ 600.00	
E. Livgard, P.Eng. 6 days	600.00	
Vehicle - 11 days @ \$25.00	275.00	
Accommodations, meals, gas	<u>500.00</u>	\$ 1975.00
		<u>\$ 8557.50</u>
Assayes (General Testing)		
1/2 Analysis for cu, Mo in P.P.M.		392.00
	Total:	<u>\$ 8949.50</u>
Geotronics Surveys Ltd.		
Seismic survey July 20-23rd		\$ 4226.11
2 Company supplied helpers		
Dag Livgard 2 Days	\$ 64.00	
Bryan Livgard 2 Days	64.00	
Supervision E. Livgard, P.Eng. 3 Days	300.00	
Expenses: Vehicle 2 days @ \$25.00	50.00	
Room, board, gas	<u>161.30</u>	\$ 639.30
	Total:	<u>\$ 4865.41</u>
Cat Work		
Pooley Bros. Ltd. - Merritt		
Mobilization	\$ 219.00	
Cat Work	<u>1580.88</u>	\$ 1799.88
June 13th - 15th/77		
Mobilization and Cat Work		2302.31
		<u>\$ 4102.19</u>
Supervision - E. Livgard, P.Eng		
June 13-14th & Oct. 4th 3 Days @ \$100	\$ 300.00	
Vehicle 3 Days @ \$25.00	75.00	
Accommodation, meals & gas	<u>125.00</u>	500.00
	Total:	<u>\$ 4602.19</u>

Egil Livgard
 For

LORADO MINING CORPORATION

COST OF WORK CARRIED OUT ON
SV #1,2,3,4,5, ~~6~~ HIGHLAND VALLEY 1977

Overburden Drilling

Bema Industries Ltd - Langley
Sept. 20th - 22nd, 1977

11 Holes 28.85 meters		\$ 1200.00
Supervision E. Livgard, P.Eng 3 Days @ \$100	\$ 300.00	
Expenses: Vehicle 3 Days @ \$25.00	75.00	
Lodging, meals	<u>121.70</u>	<u>496.70</u>
Total:		<u><u>\$ 1696.70</u></u>

Egil Livgard
For
CORADO MINING Corp Ltd



GENERAL TESTING LABORATORIES

DIVISION SUPERINTENDENCE COMPANY (CANADA) LTD

1001 EAST PENDER ST. VANCOUVER B.C. CANADA V6A 1W7
 PHONE (604) 254-1667 TELEEX 04-007514 CABLE SUPERINT 57

TO:
LORAINO MINING CORPORATION
 409 - 1155 West Pender Street
 Vancouver, B.C.

CERTIFICATE OF ASSAY

No.: **7706-2251** DATE: **June 30/77**

We hereby certify that the following are the results of assays on: **Ore**

MARKED	OZ/ST		Copper	Molybdenum	Zn	Pb	Ag	Au
	GR/MT	GR/MT	Cu (ppm)	Mo (ppm)				
501 - KB			45	1.3	50-60			
502			8	0.7				
503			20	0.2				
504			13	0.2				
505			8	0.2				
506			10	0.6				
507			8	1.0				
508			10	0.8				
509			8	0.5				
510			8	0.2				
511			9	0.3				
512			19	0.8				
513			20	0.9				
514			8	0.3				
515			13	0.4				
516			12	0.5				
517			10	1.3				
518			13	0.6				
519			30	0.6				
520			21	0.8				
521			13	0.9				
522			21	1.0				
523			23	0.6				
524			13	0.4				
525			13	0.5		290-300 67-80		
551			13	0.6				
552			8	0.6				
553			6	0.2				
554			12	0.3				
555			5	0.2				
556			8	0.8				
557			8	0.5				
558			7	0.6				
559			6	0.2				
560 - BB			8	0.5				

/Continued on page 2

NOTE: REJECTS RETAINED ONE MONTH PULPS RETAINED THREE MONTHS ON REQUEST
 PULPS AND REJECTS WILL BE STORED FOR A MAXIMUM OF ONE YEAR

REPORTS ARE THE CONFIDENTIAL PROPERTY OF CLIENTS PUBLICATION OF STATEMENTS, CONCLUSION OR EXTRACTS FROM OR REGARDING OUR REPORTS IS NOT PERMITTED WITHOUT OUR WRITTEN APPROVAL ANY LIABILITY ATTACHED THERETO IS LIMITED TO THE FEE CHARGED

B. Given
B. GIVEN
 PROVINCIAL ASSAYER

COPY

Analytical and Consulting Chemists, Bulk Cargo Specialists, Surveyors, Inspectors, Samplers, Weighers

MEMBER American Society For Testing Materials • The American Oil Chemists Society • Canadian Testing Association
 REFEREE AND/OR OFFICIAL CHEMISTS FOR Vancouver Merchants Exchange • National Institute Of Oilsseed Products • The American Oil Chemists Society
 OFFICIAL WEIGHMASTERS FOR Vancouver Board Of Trade • Vancouver Merchants Exchange



GENERAL TESTING LABORATORIES

DIVISION SUPERINTENDENCE COMPANY (CANADA) LTD

1001 EAST PENDER ST. VANCOUVER B.C. CANADA V6A 1W7
 PHONE (604) 254-1617 TELEX 04-507514 CARLE SUPERVISE

TO:
COLORADO MINING CORPORATION

(Continued) ... page 2 ...

CERTIFICATE OF ASSAY

No: **7706-2251** DATE: **June 30/77**

We hereby certify that the following are the results of assays on: **Ore**

PERCUSSION DRILLING

MARKED	GOLD		Copper	Molybdenum	XXX	XXX	XXX	XXX
	OZ/ST GR/MT	OZ/ST GR/MT						
561 - B B			8	0.8				
562			12	0.8				
563			13	0.9				
564			13	0.8				
565			10	0.7				
P3 566			6	0.3				
567			12	0.9				
568			10	0.3				
569			23	0.6				
570			17	0.9				
571			15	0.5				
572			15	0.8				
573			11	0.4	270-300'			
574			21	0.4	67-80'			
575			13	0.4				
576			2	0.3				
577			6	0.8				
578			6	0.3				
P4 579			10	0.8				
580			6	0.3				
581			6	0.5				
582			11	0.3				
583			6	0.3				
584			8	0.5				
585			6	0.7				
586			8	0.8				
587			10	1.1				
588			8	1.2				
589			10	0.6				
590			13	0.4				
591			49	1.3				
592			25	0.3				
593			70	0.2	260-270'			
594			8	0.6	46-60'			
595			8	0.3				
P5 596			7	0.6				
597 - B B			10	0.3				

/ Continued on page 3

NOTE: REJECTS RETAINED ONE MONTH PULPS RETAINED THREE MONTHS ON REQUEST
 PULPS AND REJECTS WILL BE STORED FOR A MAXIMUM OF ONE YEAR

REPORTS ARE THE CONFIDENTIAL PROPERTY OF CLIENTS. PUBLICATION OF STATE-
 MENTS, CONCLUSIONS OR EXTRACTS FROM OR REGARDING OUR REPORTS IS NOT PER-
 Mitted WITHOUT OUR WRITTEN APPROVAL ANY LIABILITY ATTACHED THERETO IS
 LIMITED TO THE FEE CHARGED

B. Given

B. GIVEN PROVINCIAL ASSAYER

Analytical and Consulting Chemists, Bulk Cargo Specialists, Surveyors, Inspectors, Samplers, Weighers

MEMBER American Society For Testing Materials • The American Oil Chemists Society • Canadian Testing Association
 REFERENT AND OR OFFICIAL CHEMISTS FOR Vancouver Merchants Exchange • National Institute Of Oilseed Products • The American Oil Chemists Society
 OFFICIAL WEIGHMASTERS FOR Vancouver Board Of Trade • Vancouver Merchants Exchange



GENERAL TESTING LABORATORIES

DIVISION SUPERINTENDENCE COMPANY (CANADA) LTD

1001 EAST PENDER ST VANCOUVER B.C. CANADA V6A 1W2
 PHONE (604) 251-1617 TELEEX 64-537514 CABLE SUPERVISE

TO:
TORONTO MINING CORPORATION
 (Continued) ... page 3

CERTIFICATE OF ASSAY

No: **7706-2251** DATE: **June 30/77**

PERCUSSION DRILLING
 We hereby certify that the following are the results of assays on

Ore

MARKED	GOLD SILVER		Copper	Molybdenum	XXX	XXX	XXX	XXX
	OZ/ST GR/MT	OZ/ST GR/MT	Cu (ppm)	Mo (ppm)				
598 - 2B			8	0.3				
599			12	0.5				
600			10	0.4				
601			20.4	0.8				
602			48	0.3				
603			20	0.7				
604			19	1.0				
605			17	0.6				
606			12	0.4				
P5 607			15	0.4				
608			13	0.8				
609			44	0.5				
610			25	0.3				
611			31	0.6				
612			17	0.4				
613			14	0.8				
614			16	0.9				
615			31	0.6				
616			56	1.1				
617			44	0.8				
618			29	0.6				
619			17	0.9	290-300			
620			15	1.3	107-120			
621			10	0.7				
622			14	0.6				
623			17	0.6				
624			10	0.8				
625			10	0.2				
P7 626			15	0.8				
627			16	0.9				
628			8	0.3				
629			8	1.0				
630			12	0.2				
631			11	0.5				
632			8	0.2				
633 - 2B			13	1.0				

/ Continued on page 4

NOTE: REJECTS RETAINED ONE MONTH. PULPS RETAINED THREE MONTHS. ON REQUEST PULPS AND REJECTS WILL BE STORED FOR A MAXIMUM OF ONE YEAR.

REPORTS ARE THE CONFIDENTIAL PROPERTY OF CLIENTS. PUBLICATION OF STATEMENTS, CONCLUSIONS OR EXTRACTS FROM OR REGARDING OUR REPORTS IS NOT PERMITTED WITHOUT OUR WRITTEN APPROVAL. ANY LIABILITY ATTACHED THERETO IS LIMITED TO THE FEE CHARGED.

B. Hume

PROVINCIAL ASSAYER

COPY

Analytical and Consulting Chemists, Bulk Cargo Specialists, Surveyors, Inspectors, Samplers, Weighers

MEMBER American Society For Testing Materials • The American Oil Chemists Society • Canadian Testing Association
 REFEREE AND/OR OFFICIAL CHEMISTS FOR Vancouver Merchants Exchange • National Institute Of Graded Products • The American Oil Chemists Society
 OFFICIAL WEIGHMASTERS FOR Vancouver Board Of Trade • Vancouver Merchants Exchange



GENERAL TESTING LABORATORIES

DIVISION SUPERINTENDENCE COMPANY (CANADA) LTD

1801 EAST BENDER ST. VANCOUVER B.C. CANADA V6A 1W2
 PHONE (604) 254-1647 TELEEX 04-267514 CABLE SUPERVISE

TO:
LORADO MINING CORPORATION
 (Continued) ... page 4 ...

CERTIFICATE OF ASSAY

No. **7706-2251** DATE: **June 30/77**

PERCUSSION DRILLING

We hereby certify that the following are the results of assays on: **Ore**

MARKED	POUNDS OZ (ST)		Copper Cu (ppm)	Molybdenum Mo (ppm)	XXX	XXXX	XXX	XXX
	GR/MT	GR/MT						
634 - HB			6	0.5				
635			8	0.6				
636			17	0.2				
637 - HB			33	0.9				
					290 - 300			

NOTE: REJECTS RETAINED ONE MONTH PULPS RETAINED THREE MONTHS ON REQUEST
 PULPS AND REJECTS WILL BE STORED FOR A MAXIMUM OF ONE YEAR

REPORTS ARE THE CONFIDENTIAL PROPERTY OF CLIENTS PUBLICATION OF STATEMENTS, CONCLUSION OR EXTRACTS FROM OR REGARDING OUR REPORTS IS NOT PERMITTED WITHOUT OUR WRITTEN APPROVAL ANY LIABILITY ATTACHED THERETO IS LIMITED TO THE FEE CHARGED

B. Given
B. GIVEN PROVINCIAL ASSAYER

COPY

Analytical and Consulting Chemists, Bulk Cargo Specialists, Surveyors, Inspectors, Samplers, Weighers

MEMBER American Society For Testing Materials • The American Oil Chemists Society • Canadian Testing Association
 REFEREE AND/OR OFFICIAL CHEMISTS FOR Vancouver Merchants Exchange • National Institute Of Oil-seed Products • The American Oil Chemists Society
 OFFICIAL WEIGHMASTERS FOR Vancouver Board Of Trade • Vancouver Merchants Exchange



GENERAL TESTING LABORATORIES

DIVISION SUPERINTENDENCE COMPANY (CANADA) LTD

1001 EAST PENDER ST., VANCOUVER, B.C. CANADA V6A 1W0
 PHONE (604) 254-1847 TELEEX 04-527514 CABLE SUPERVISOR

TO:
LORADO MINING CORP.
 # 409 - 1199 West Pender Street
 Vancouver, B.C.

CERTIFICATE OF ASSAY

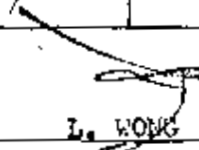
No.: **7710-1155** DATE: **Oct. 11/77**

We hereby certify that the following are the results of assays on: **Ore**

MARKED	XXXXXXXXXXXX		Copper	Moldemur	XXX	XXX	XXX	XXX
			Cu (%)	Mo (%)				
OVERBURDEN DRILLING								
651	HOLE	4/1	0.008	0.001				
652	"	"	0.007	0.001				
653	"	"	0.025	0.001				
654	"	"	0.129	0.001				
655	"	"	0.019	0.001				
656A	"	7 to 20m	0.011	0.001				
657	"	8	0.010	0.001				
658	"	10	0.008	0.001				
656B	"	7 to 3m	0.051	0.001				

NOTE: REJECTS RETAINED ONE MONTH. PULPS RETAINED THREE MONTHS. ON REQUEST PULPS AND REJECTS WILL BE STORED FOR A MAXIMUM OF ONE YEAR.

REPORTS ARE THE CONFIDENTIAL PROPERTY OF CLIENTS. PUBLICATION OF STATEMENTS, CONCLUSIONS OR EXTRACTS FROM OR REGARDING OUR REPORTS IS NOT PERMITTED WITHOUT OUR WRITTEN APPROVAL. ANY LIABILITY ATTACHED THERETO IS LIMITED TO THE FEE CHARGED.


L. WONG
 PROVINCIAL ASSAYER

COPY

Analytical and Consulting Chemists. Bulk Cargo Specialists. Surveyors, Inspectors, Samplers, Weighers

MEMBER American Society For Testing Materials • The American Oil Chemists' Society • Canadian Testing Association
 REFEREE AND/OR OFFICIAL CHEMISTS FOR National Institute Of Oilseed Products • The American Oil Chemists' Society
 OFFICIAL WEIGHMASTERS FOR Vancouver Board Of Trade

LIVGARD CONSULTANTS LTD.

COQUITLAM, B. C.

CERTIFICATE

I, EGIL LIVGARD, of #409, 1199 West Pender St., Vancouver, British Columbia.

DO HEREBY CERTIFY:

1. I am a Consulting Geological Engineer.
2. I am a graduate of the University of British Columbia, B.Sc., 1960. Geological Sciences.
3. I am a member of the Association of Professional Engineers of the Province of British Columbia.
4. From 1960 to 1962 I was employed as Geologist with United Keno Hill Mines, Elsa, Yukon Territories.

From 1962 to 1963 I was employed as Geologist with the Geologic Survey of Norway.

From 1963 to 1966 I was employed as Mine Geologist and Engineer at the Portage Mine, Chibougamau, Quebec.

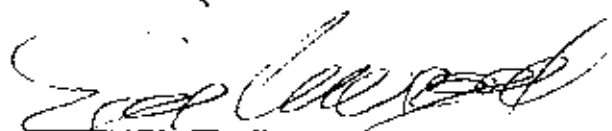
From 1966 to 1968 I was employed as Chief Geologist and Engineer at Utica Mines, Keremeos, B. C.

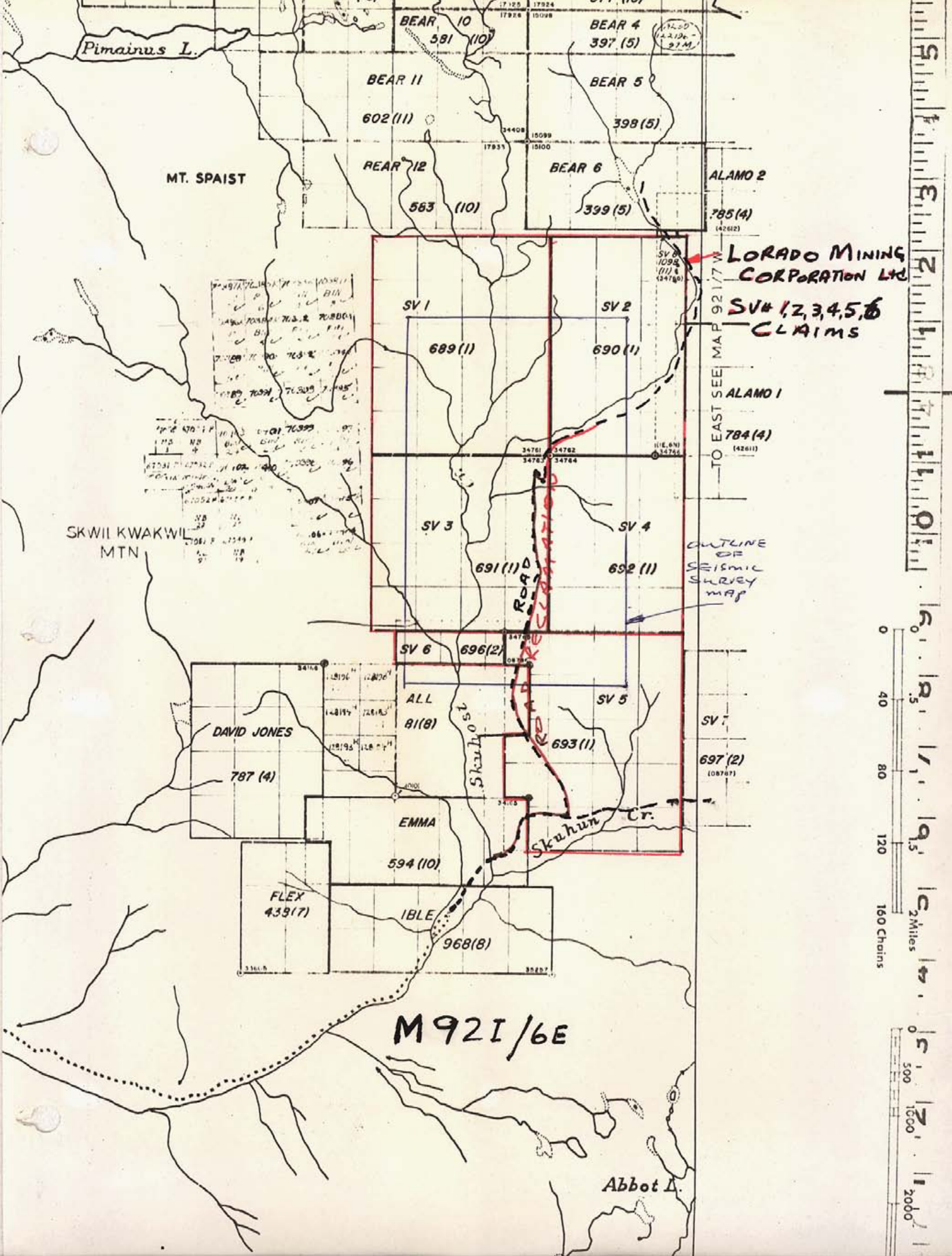
From 1968 to 1970 I was employed by S & N Mine Management, Consultants, Vancouver, B. C.

From 1970 to the present I have been self-employed as a Consultant in Vancouver, B. C.

5. This report is based on my own supervision in the field of the work carried out.
6. I am a Director of Lorado Mining Corporation Ltd., and own beneficially a substantial number of shares in the corporation.

DATED at Coquitlam, British Columbia, this 24th day of January 1978.


Egil Livgard, B.Sc., P.Eng.
Coquitlam, B. C.



Pimainus L.

BEAR 10
581 (10)

BEAR 4
397 (5)

BEAR 11
602 (11)

BEAR 5
398 (5)

MT. SPAIST

BEAR 12
563 (10)

BEAR 6
399 (5)

ALAMO 2
785 (4)

LORADO MINING CORPORATION LTD

SV# 1, 2, 3, 4, 5, 6 CLAIMS

SV 1
689 (1)

SV 2
690 (1)

ALAMO 1
784 (4)

SV 3
691 (1)

SV 4
692 (1)

OUTLINE OF SEISMIC SURVEY MAP

SKUHUN ROAD

SV 6
696 (2)

SV 5
693 (1)

SV 7
697 (2)

ALL
81 (8)

DAVID JONES
787 (4)

EMMA
594 (10)

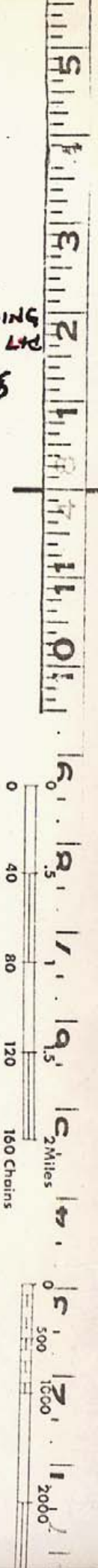
SKUHUN Cr.

FLEX
439 (7)

IBLE
968 (8)

M921/6E

Abbot Δ





BETHSAIDA
BETHLEHEM

BETHSAIDA
PROPHYLLITIC ALTERATION

BETHSAIDA
RUBBLE

LORNEX FAULT - PROBABLE LOCATION

Depths to 7800 ft / sec
refractor - probably not
bedrock.

Bedrock
estimated to be 300' to 400'
below surface.

Depths to bedrock

SL-1

P6
45' N.B.

P2
50'

SV 1

SV 2

SV 3

SV 4

BETHSAIDA
RUBBLE

BETHSAIDA
No ALTERATION

Creek

BASELINE

road

LORNEX FAULT PROJECTED POSSIBLE LOCATION ?

Skuhosi

Bedrock
estimated to be 300' to 400'
below surface.

SL-4

SV 6

SV 5

SV 3

SV 4

6611
part 1 of 2

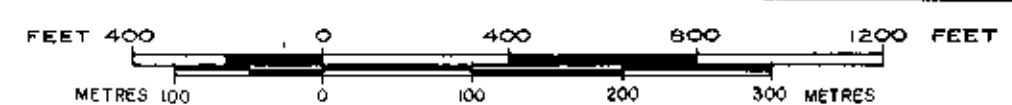
PEG. APLITE
CHALCOCITE
MALACHITE

MINERAL RESOURCES BRANCH
ASSESSMENT REPORT

NO. 6611

MAP NO. PART 1 of 2

SCALE



LEGEND

- LINEAMENTS
- FRACTURE TRENDS
- GEOLOGIC CONTACTS

- SEISMIC LINE SHOWING GEOPHONE LOCATIONS
- FAULTS - PROB - POSS
- P2
50'
50' N.B. PERCUSSION DRILL HOLE
Depth to Bedrock
Depth of hole not reaching bedrock.
- PEG. APLITE, CHALCOCITE, MALACHITE
- OVERBURDEN HOLES

GEOTRONICS SURVEYS LTD.

LORADO MINING CORPORATION
S.V. CLAIM GROUP
SKUHOST CREEK AREA, KAMLOOPS M.D., B.C.

SEISMIC REFRACTION STUDY
PROFILE LOCATIONS

DRAWN BY: D.G.M.	SCALE: 1" = 400'	DATE: AUG 1977	JOB No: 77-28	FIGURE No. 1
---------------------	---------------------	-------------------	------------------	-----------------



BETHSAIDA
BETHLEHEM

BETHSAIDA
PROPHYLLITIC ALTERATION

LORNEX FAULT - PROBABLE LOCATION

BETHSAIDA
RUBBLE

P3
70'

P4
70'

P5
90'

P7
110'

Depths to bedrock

Depths to 7800 ft/sec
refractor - probably not
bedrock.

Bedrock
estimated to be 300' to 400'
below surface.

12 9 6 3 0 3 6 9 12 15 18 21 24 27 30 33 36 39 42 45 48 51 54 57 60

SL-1

Copper
road
Creek

SL-3

P6
168' NB

P1
120' NB

P2
50'

SV 1

SV 2

SV 3

SV 4

BETHSAIDA
RUBBLE

BETHSAIDA
No ALTERATION

Creek

BASELINE

road

LORNEX FAULT PROJECTED POSSIBLE LOCATION ?

Skuhosi

Bedrock
estimated to be 300' to 400'
below surface.

SL-4

SV 6

SV 5

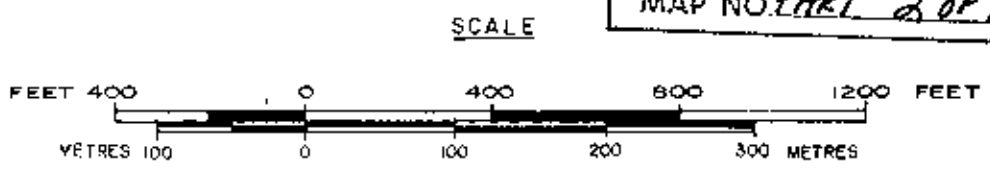
SV 3

SV 4

6611
part 2 of 2

PEG APLITE
CHALCOCITE
MALACHITE

MINERAL RESOURCES BRANCH
ASSESSMENT REPORT
NO. 6611
MAP NO. PART 2 OF 2



LEGEND

- LINEAMENTS
- FAULTS - PROB - POSS
- FRACTURE TRENDS
- GEOLOGIC CONTACTS

12 6 SEISMIC LINE SHOWING GEOPHONE LOCATIONS

FAULTS - PROB - POSS

P2
50'
50' N.B.
PERCUSSION DRILL HOLE
Depth to Bedrock
Depth of hole not reaching bedrock.

PEG APLITE, CHALCOCITE, MALACHITE.

GEOTRONICS SURVEYS LTD.

LORADO MINING CORPORATION
SV CLAIM GROUP
SKUHOST CREEK AREA, KAMLOOPS B.C.

SEISMIC REFRACTION STUDY
PROFILE LOCATIONS

DRAWN BY: D.G.M.	SCALE: 1" = 400'	DATE: AUG. 1977	JOB No: 77-28	FIGURE No. 1
---------------------	---------------------	--------------------	------------------	-----------------