

CHANCE 5 GROUP ASSESSMENT REPORT

The following report describes the results of drilling D.D.H. 6423, a 411 m hole in the Kimberley area on the Chance 5 crown granted mineral claim located in the Fort Steele Mining Division.

The NTS location is 82 G/12.

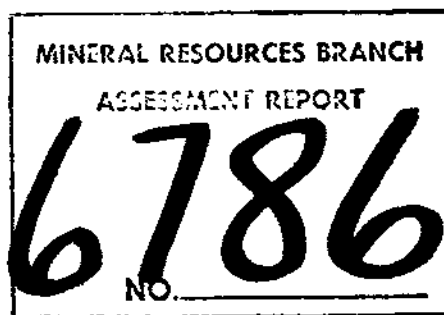
Latitude $49^{\circ} 41.6'$ North.

Longitude $115^{\circ} 56.6'$ West.

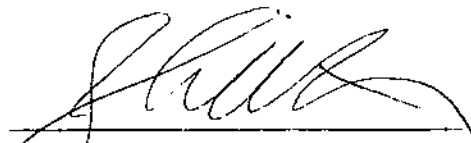
Cominco Ltd., owner of the claims, was the operator of the exploration program.

P.W. Ransom is author of this report.

Date of Submission: March 1978.



Endorsed for
Release by :



J.M. Hamilton, P. Eng.
Chief Geologist, Kimberley

TABLE OF CONTENTS

	<u>Page</u>
1. Introduction	1
2. Author's Qualifications	2
3. Detailed Technical Data And Interpretation	3
4. Index and Location Maps	4-6
5. Diamond Drill Log	7-18
6. Itemized Cost Statement And Contract Invoices	19-37

Introduction

i) Specific Location

D.D.H. 6423 is located 200 m WNW of the Meadowbrook School in Kimberley. Access to the drill site is by road through the property of A. Poirier. An index map, figure 1 is attached.

ii) Property Definition

The property being investigated forms part of the Sullivan Mine claim group, owned by Cominco Ltd. Cominco Ltd. has operated the mine for about 70 years. The Sullivan orebody is the richest ore deposit in British Columbia and it has contributed a major proportion of the mineral wealth generated in the province.

iii) One hole is being reported on in this report.

D.D.H. 6423 was drilled using H wireline tools, 9.6 cm in diameter, to a depth of 411 meters.

iv) D.D.H. 6423 was collared on the Chance 5 crown granted mineral claim.

Author's Qualifications

As author of this report, I, Paul W. Ransom certify that:

I am a geologist active in minerals exploration.

I am a graduate of McGill University with a degree of Bachelor of Science.

I have been continuously engaged in mining and exploration geology for twelve years.

I am a member of the Geological Association of Canada.

I supervised Cominco Ltd.'s Sullivan Mine area exploration drilling program in 1977.



P.W. Ransom
P.W. Ransom, G.A.C.

PWR:sjp
March 8, 1978

Detailed Technical Data and Interpretation

i) Purpose

The purpose of D.D.H. 6423 was to test at a depth of 100 m the mineral potential of the Concentrator Hill Horizon and to obtain stratigraphic information below it.

ii) Results

No mineralization of economic value was encountered in D.D.H. 6423. A descriptive log accompanies this report.

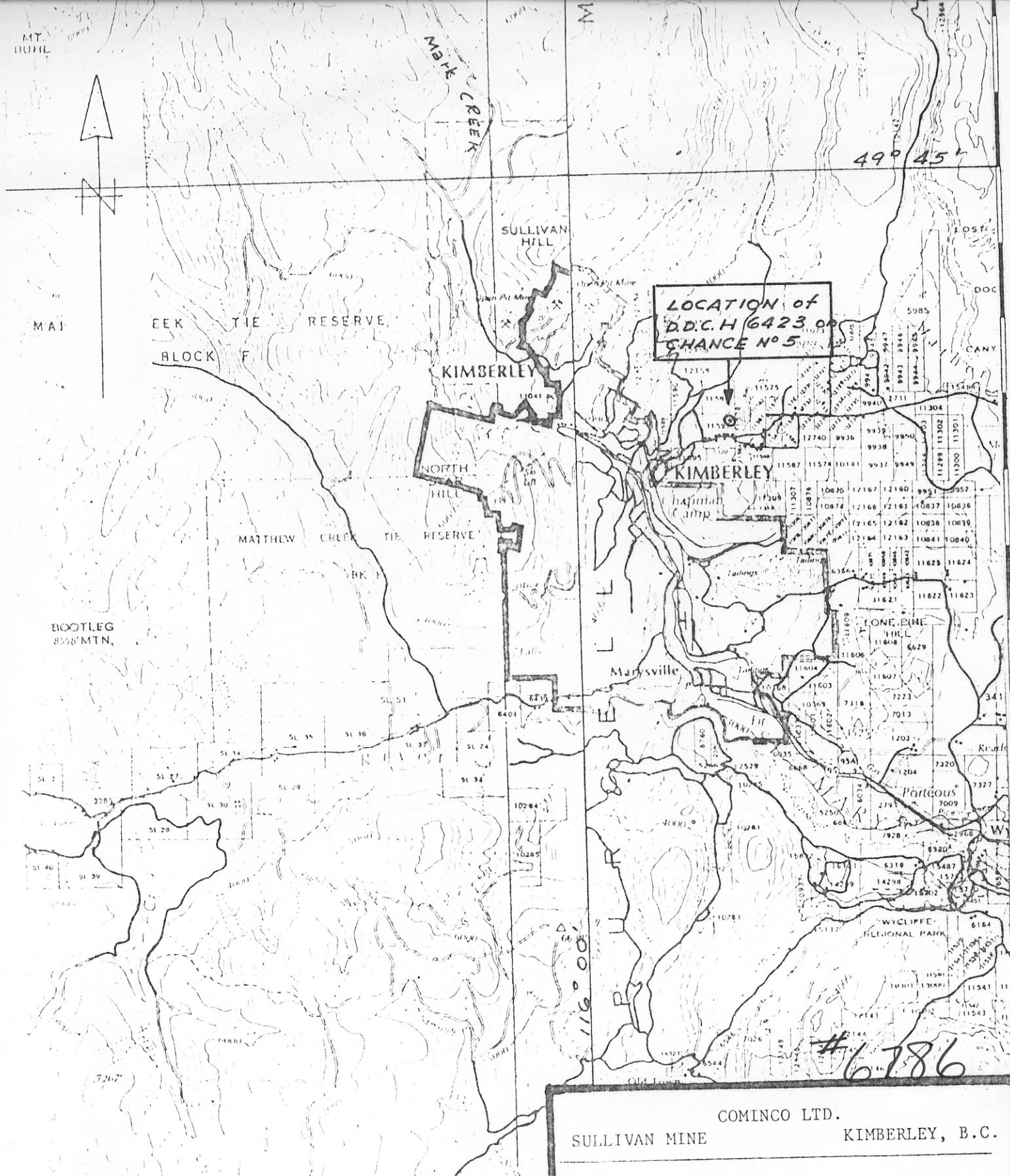
iii) Interpretation

The Concentrator Hill Horizon was intersected from 81-85 m. The sediments encountered were typically medium bedded argillaceous siltstones. Thin and thick beds were common. Quartzites and argillaceous quartzites that are interpreted as turbidites occur from 144 m to 159 m, 254 m to 320 m, and 347 m to 357 m. Molybdenite Intrusives were intersected from 336 m to 339 m and 386.2 m 386.5 m and lamprophyre dikes from 183.2 m to 183.5 m and 287 m to 288 m.

iv) Conclusions

The Concentrator Hill Horizon contains no mineralization of economic value.

The sediments cored are typical of the sands and silts of the Aldridge Formation.



LOCATION of
D.D.C.H 6423 on
CHANCE No 5

COMINCO LTD.
SULLIVAN MINE
KIMBERLEY, B.C.

Scale. 1:125,000
Ref.: 82^F/NE, 82^G/NW (73-74)

ALB 2/78

#6786

M.O.
.13169

STAR
No. 5
L. 13381

CITANCE
No. 2
L. 13390

CITANCE
No. 4
L. 13389

CITANCE No. 1
L. 13391

CITANCE
No. 6
L. 13388

L. 11582

CITANCE No. 3
L. 13392

CITANCE No. 8
L. 13387

L. 11581

DENVER
No. 2
L. 13402

CITANCE
No. 5
L. 13393

CITANCE
No. 7
L. 13394

DENVER D.D.CH 6423
No. 4
L. 13401

94
ER
Y. 95A.

L. 11597
← 1 Mile to KIMBERLEY.

HIGHWAY 95A

ALPHA
No. 1
L. 13400

L. 11584

DENVER
No. 3
L. 13404

ALPHA
No. 2
L. 13399

DENVER
No. 5
L. 13405

MED 8

BUTE No. 4
L. 13413

L. 11596

L1320 MED 4 #6786

L. 11588

BUT
L. 1

COMINCO LTD.

SULLIVAN MINE

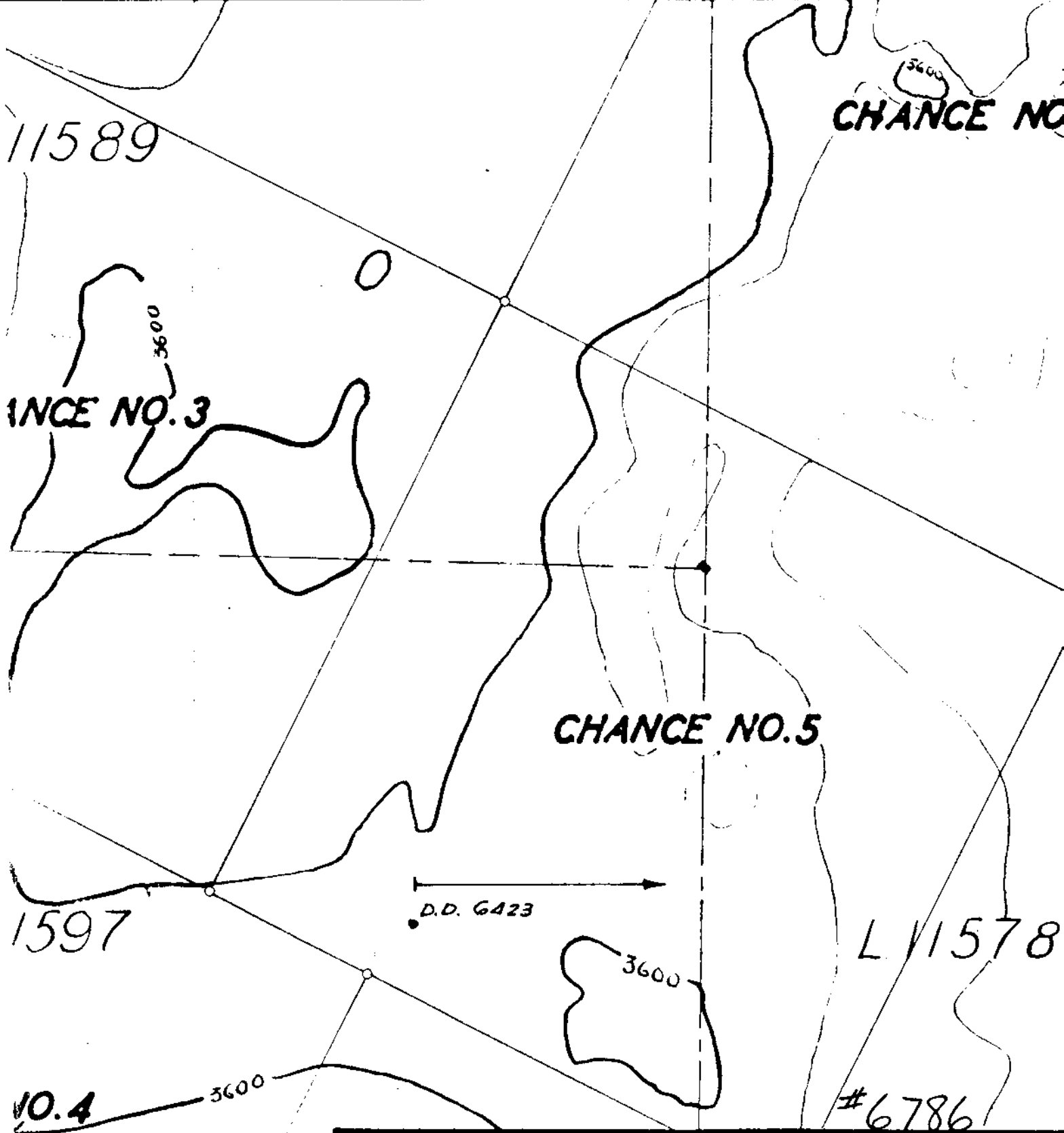
KIMBERLEY B.C.

CHANCE No. 5 (C.G.M.C) GROUP

No. 3

ROUTE NO SCALE 1:9600

5



COMINCO LTD.

SULLIVAN MINE

KIMBERLEY B.C.

D.D.C.H # 6423 - CHANCE NO. 5

SURVEY - B.C.L.S.

SCALE 1:3600

©

Diamond Drill Geological Log

FOR D.D.H. 6423



LAT. 2300 N. (mine grid) DEP. 18,080 E. (mine grid) ELEV. 3580'
 DIP -65 AZIM. 270° LENGTH 1,349'
 HORIZ. COMP. See Survey VERT. COMP. See Survey
 DATE COLLARED: 30-8-77 DATE COMPLETED: 26-9-77
 CORE STORAGE: Sullivan Mine Open pit Storage
 DRILLED ON CLAIM(S): Chance 5
 OBJECTIVE: To test Concentrator Hill Horizon and examine underlying stratigraphy

GENERAL COMMENTS:

PLANNED LENGTH: 1400'
 TERMINATION COMMENTS: Objective achieved

DRILLED BY: Tonto Drilling
 TYPE DRILL: Model 44
 CORE SIZE(S): HQ
 PERFORMANCE COMMENTS: Pipe wrench accidentally dropped into hole during tripping of overburden. Unable to retrieve, slowed progress considerably.

CASING REMAINING IN HOLE (LENGTH & SIZE): 202' H Casing

TYPE OF CAP & METHOD OF SEALING: H Cap, screwed on

OTHER MATERIAL REMAINING IN HOLE: NIL

SURVEY INSTRUMENT USED: Sperry Sun, single shot

ADDITIONAL DOWN HOLE TESTS:

LOG LEGEND

BED THICKNESS CLASSIFICATION		LITHOLOGY ABBREVIATIONS
BEDS	Very Thick Bedded — 100 cm —	A - Argillite
	Thick Bedded — 30 cm —	SA - Silty Argillite
	Medium Bedded — 10 cm —	AS - Argillaceous Siltstone
	Thin Bedded — 3 cm —	S - Siltstone
	Very Thin Bedded — 1 cm —	AQ - Argillaceous Quartzite
	LAMINAE	Laminated — 0.3 cm — Thinly Laminated

Diamond Drill Geological Log



Objective: TO TEST CONCENTRATOR HILL HORIZON AND EXAMINE UNDERLYING STRATIGRAPHY
 Sampled: NOT SAMPLED

Logged By: A.S. Hagen Date: DECEMBER 1977

Composites:

Block: Sect.: Piece: Chance 5 H.C. App. Bear: West App. Dip: -65° Length: 1,349'

From	To	Discard:	Reason:
0.0	202.0		Overburden.
202.0	211.0		Thick to medium bedded sediment, A-SA-AS-S. Graded beds. Numerous irregular hair line fractures. Bdg. 82° to core.
211.0	215.7		Very thick bed, grading from siltstone to a .3' argillite top with some thin laminations, fine fracturing in part.
215.7	228.2		Medium bedded sediment, A-SA-AS. Change from silty material to argillite tops is rather sudden in most beds.
228.2	241.0	16 1733	Thick bedded sediment, quartzites. Fine grained, homogeneous, with thin argillite tops. Some pyrrhotite laminations in the argillite at 237'. 1" wuggy quartz vein cuts the core at 10° from 230.5' upwards becoming erratic near the top of this upper bed. Core becomes moderately to badly broken from 231.5' to 240.5' as result of thin (1 mm to 5 mm) pyrrhotite-pyrite filled fractures running parallel to the core.
241.0	256.5		Thinly laminated SA. Laminations sometimes vague. This zone is comparable to that in DD 6422 1772.5' to 1791.7' 3 thin to very thin beds noted within the zone. A .5' silty bed occurs at 254' with a thin base of fine quartz grains bordered by 1/8" blue quartz. Minor ankerite and quartz at the base. This bed is topped by a finely laminated, calcareous zone (2") with an unconformable base. Pyrrhotite occurs as flecks and in thin laminations (minc) throughout this section. Bdg. 80° to core.

40 Scale
 Color Plot & Dip Ore Classes & Aver.

LAMINAE	BEDS
Thinly Laminated	Very Thick Bedded
Laminated	100 cm
0.3 cm	Thick Bedded
	30 cm
	Medium Bedded
	10 cm
	Thin Bedded
	3 cm
	Very Thin Bedded
	1 cm

Core Size

HQ

Hole No.

6423

Page

1

Diamond Drill Geological Log



Objective:		Sampled:		40 Scale	
Logged By: A. S. Hagen		Date:		Color Plot & Dip	
Block:		Place:		Ore Classes & Aver.	
Sect.:		App. Bear:		App. Dip.:	
Length:		Composites:			
From	To	Discard:	Reason:		
256.5	260.5		SA, appears massive with vague suggestions of thin laminations. Maybe same type as previous footage.		
252.5	267.5		Thick to medium beds, AS-S. Slightly softer tops indicate bed contacts, Homogeneous appearing rock with pyrrhotite flecks from 255' to 266.3' giving a laminated appearance to the core.		
267.5	279.6		Concentrator Hill Horizon		
			267.5 - 269.7 Pyrrhotite-pyrite laminae within laminated to thinly laminated AS.		
			269.7 - 270.5 AS grading to SA, appears massive, pyrrhotite speckled.		
			270.5 - 274.7 Pyrrhotite-pyrite laminae within laminated to thinly laminated AS.		
			274.7 - 275.2 AS grading to SA, appears massive, pyrrhotite speckled.		
			275.2 - 276.7 Pyrrhotite-pyrite laminae within laminated to thinly laminated AS.		
			276.7 - 277.6 AS grading to SA, upper half appears massive, lower half shows banding with associated pyrrhotite-pyrite flecks.		
			277.6 - 279.6 Pyrrhotite-pyrite laminae within laminated to thinly laminated AS, a thin bed of massive SA at 278.1' (5 cm) and another at 279.3' (2 cm).		
			There is a noticeable amount of fine, rusty-red material in association with the pyrrhotite-pyrite laminae of the Concentrator Hill Horizon resembling sphalerite. However, it does not produce the usual red streak of sphalerite when scratched.		
279.6	280.2		Medium bed of graded SA-AS, pyrrhotite-pyrite speckled, some laminations.	Core Size	
			Similar to non laminated beds within the Concentrator Hill Horizon.	HQ	
			8dg 80° to core.	Hole No. Page	
				6423 2	

Diamond Drill Geological Log



Objective:		Sampled:		40 Scale	
Logged By: A. S. Hagen		Date:		Color Plot & Dip	
Composites:		Block:		Ore Classes & Aver.	
Sert:		Place:		App. Bear:	
App. Dip:		Length:			
From	To	Discard	Reason:		
280.2	281.9		Laminated to thinly laminated SA-AS, topped by 2" of massive soft argillite. This section is very similar to the laminated Concentrator Hill Horizon but has considerably less sulphide content. It appears to be of the same depositional process as the Concentrator Hill Horizon and should probably be included in that zone.		
281.9	283.5		Medium bed of SA-AS, pyrrhotite-pyrite speckled, laminated in part, similar to 279.6' to 280.2'.		
283.5	285.3		Thick bed, graded quartzite. Medium to fine closely packed quartz grains at the base grading to a 2", massive SA top. Irregular base into which underlying sediments are partially injected.		
285.3	289.7		Thick bedded-medium bedded sediment, graded SA-AS. Upper bed has 1" sand dike injection.		
289.7	290.8		Three very finely laminated SA beds from 4" to 5" thick separated by thin beds of massive, light grey argillite.		
290.8	328.0		Thick to medium bedded SA-AS, graded. Occasional, thin, finely laminated beds.		
328.0	337.0		Medium bedded-thin bedded-very thin bedded sediment, A-SA-AS. Some graded beds, some alternating dark, finely laminated and light grey massive argillite beds. Bdg. 80° to core.		
			Core Size		
			HQ		
			Hole No.		Page
			6423		3

Diamond Drill Geological Log



Objective:		Sampled:		40 Scale	
Logged By: A. S. Haugen		Date:		Color Plot & Dips	
Composites:		Ore Classes & Aver.			
Block:	Section:	Piece:	App. Bear:	App. Dip.:	Length:
From:	To:	Discard:	Reason:		
337.0	377.0		Thick bedded-medium bedded sediment, A-SA-AS, graded beds. Occasional very thin, light grey argillite beds with abrupt contacts. One thin bed of 'blue' silt and/or fine grained quartz, irregular contacts at 348'.		
377.0	383.5		Thin bedded-very thin bedded-laminated sediment, A-SA-AS. Lenticular fragment (1 cm x 6 cm) noted at 380.5'. Cross bedding at 377.5'.		
383.5	448.0		Medium bedded-thin bedded sediment, A-SA-AS. Thin, massive, light grey argillite beds are common. An unusual highly calcareous, laminated inclusion at 401' (5 cm x 7 cm). Only occasional beds show definite grading. Thin, massive, light grey argillite beds with abrupt contacts are common. Some very thin beds. Core becomes moderately to badly broken from 408' due to fracture pattern running from parallel to 20° to the core.		
448.0	472.0		Thick bedded to medium bedded sediment, A-SA-AS. Core is badly sheared and broken starting at 465' with a brecciated zone at 467' healed with a hardened gouge-like material.		
472.0	474.5		Thick bed, graded quartzite. Core is from badly broken at the top to moderately broken through the lower more quartzitic part of this bed.		
474.5	508.0		Thick to medium bedded sediment, mainly in the medium range, S-SA-AS. Core is from moderate to badly broken to 495' with a narrow gouge and breccia zone at 486'. Rtg. 85° to core.		
			Core Site HQ		
			Hole No. 6423 Page 4		

Diamond Drill Geological Log



Objective:		Sampled:		40 Scale	
Logged By: A. S. Hagen		Date:		Color Plot & Clips	
Composites:		Ore Classes & Aver.			
Block:	Sect:	Piace:	App. Bear:	App. Dip.:	Length:
From	To	Discard:	Reason:		
508.0	520.5		Thick bedded-medium bedded sediment, graded A-SA-AS-Q. Well defined medium to fine quartz grains at the bases of most beds. Beds from 513' to 517' are medium bedded A-SA-AS.		
520.5	673.5		Thick bedded-medium bedded sediment, A-SA-AS. Grading obvious in some beds. Occasional, highly calcareous, tabular to rounded concretions. From 545' to 601' the core is occasionally moderately broken due to fractures running from parallel to 40° to the core. A narrow (.5') section at 568' is webbed with quartz and pyrite healed, fine fractures. From 520.5' to 631' there are occasional, light grey, massive argillite beds with abrupt contacts, these beds are within the thin bedded to laminated range. From 631' downwards they occur occasionally singularly and also in sections alternating with thin, very finely laminated SA (e.g. 630.8' - 632.1', 632.5' - 633.7', 639.5' - 639.9') Bdg. 85° to core. Lamprophyre dike 601' - 602', at 35° to core (minette).		
623.5	682.0		Thin bedded-very thin bedded-laminated sediment. This section is predominantly of the alternating massive, light grey argillite and finely laminated SA type. There are a few thin bedded, graded A-SA beds and one medium, graded A-SA-AS bed from 677' to 677.9'.		
682.0	833.0		Thick bedded to medium bedded sediments. A-SA-AS. Most beds obviously graded. Some homogeneous SA, finely laminated beds bordered by massive, light grey argillites in the very thin to laminated range (as described above - same type of sediment as the typical alternating dark-light sections. Occasional calcareous concretions Bdg. 86° to core at 700', 82° to core at 800'.		
			Core Size	HQ	
			Note No.	6423	Page 5

12

Diamond Drill Geological Log



Objective:		Sampled:		40 Scale		
Logged By: A. S. Hagen		Date:		Color Plot & Dip		
Block:		Composites:		Dre Classes & Aver.		
Sect:		Place:		App. Bear:		
App. Dip:		Length:				
From	To	Discard:	Reason:			
833.0	893.3		Very thick bedded sediment, predominantly siltstone. Interbeds of chaotic fragmentals with SA-AS matrix.			
			833.0 - 839.3 Quartzite, well sorted, closely packed quartz grains, occasional thin, massive, light grey argillite inclusion or interbed.			
			839.3 - 841.0 Chaotic fragmental. (267.1 - 267.2)			
			841.0 - 860.0 Quartzite, well sorted, closely packed quartz grains, occasional massive, light grey argillite inclusion or interbed from 1" to 3".			
			860.0 - 864.0 Chaotic fragmental. (267.1 - 267.2)			
			864.0 - 877.0 Quartzite, well sorted, closely packed quartz grains, slightly argillaceous.			
			877.0 - 877.6 Chaotic fragmental. (267.3 - 267.5)			
			877.6 - 883.3 Quartzite, well sorted, closely packed quartz grains, slightly argillaceous. One massive, light grey argillite inclusion or interbed (1").			
			Some portions of the quartzite beds are slightly argillaceous. The fragmental material is soft, massive light grey argillite similar to the inclusions or interbeds within the quartzites.			
883.3	885.0		Chaotic fragmental, as described above.			
885.0	922.0		Thick bedded to medium bedded sediment, A-SA-AS. Core is broken from 896.3' to 902.0' with quartz-calcite healed fracturing, fractures are from parallel to 50° to the core with associated erratic, webbed fracturing. Some minor gouge at 897'.			
			Core Size			
			HQ			
			Hole No.		Page	
			6423		6	

Diamond Drill Geological Log



Objective:		Sampled:		40 Scale	
Logged By: A.S. Hagen		Date:		Color Plot & Dip	Ore Classes & Aver.
Block:		Sect:	Place:	App. Bear:	App. Dip:
					Length:
From	To	Discard:	Reason:		
31	294.4				
922.0	956.0		Very thick bedded to thick bedded sediment, A-SA-AS-Q. Core is moderately to badly broken from 935' to 954'. A lamprophyre (minette) dike cuts the core at 40° from 940' to 943.5'.		
201-28	922.0		922.0' - 927.5' Quartzite, well sorted, lensy to laminated A-SA-AS top.		
	927.5		927.5' - 929.5' Quartzite, well sorted, 1" massive argillite top, one 1" argillite lens in the centre of this bed.		
	929.5		929.5' - 931.0' Quartzite, bottom half well sorted, top grades to massive argillite top.		
	931.0		931.0' - 934.0' Quartzite, bottom 2' well sorted, top is variable graded A-SA.		
	934.0		934.0' - 937.5' Quartzite, bottom 2' well sorted, top is variable graded A-SA, possible 2 thin graded beds included.		
	937.5		937.5' - 940.0' Quartzite, core badly broken, bed topped by 1" of massive to very thinly laminated argillite with possibly .5' of chaotic fragmental below.		
	940.0		940.0' - 943.5' Lamprophyre (minette) dike.		
	943.5		943.5' - 947.0' Quartzite, well sorted, badly shattered for 1' beyond dike contact.		
	947.0		947.0' - 956.0' Quartzite, bordering on a siltstone, quartz grains more difficult to see in this homogeneous bed, topped by 2" of A-SA.		
955.0	956.8		Chaotic fragmental, as previously described.		
956.8	960.0		Medium bedded-thin bedded sediment, predominantly non graded SA-AS with massive argillite interbeds or tops.		
960.0	965.0		Very thick bed, quartzite, well sorted bed with 2" massive A top.	Core Size	HQ
965.0	987.0		Thick bedded to medium bedded sediment, A-SA-Q. Beds appear well sorted with interbeds or tops of very thin bedded to laminated massive argillite to SA. Irregular basal contacts common. Some erratic, lens-like features in tops or interbeds.	Hole No.	6423
				Page	7

Diamond Drill Geological Log



Objective:		Sampled:		40 Scale	
Logged By: A. S. Hagen		Date:		Color Plot & Dip	
Composites:		App. Bear:		Ore Classes & Aver.	
Block:	Sect:	Place:	App. Dip:	Length:	
From	To	Discard:	Reason:		
987.0	994.0			Thin bedded-very thin bedded-laminated sediment, A-SA-AS. Zones of erratic, lens like A-SA (similar to chaotic fragmentals) within conformable A-SA-AS beds.	
994.0	995.0			Laminated to thinly laminated sediment, A-SA-AS. Alternating dark to medium-light grey. Bdg. 80° to core.	
995.0	998.0			Thin bedded-very thin bedded sediment, A-SA-AS. A 5" argillaceous quartzite bed at 996'. Some beds graded with massive argillite tops.	
998.0	1000.0			Broken core, slickensides on fractures, running 35° to 60° to core. Some quartz grains noted, base of argillaceous quartzite at 1000'.	
1000.0	1002.2			Medium bedded to thin bedded sediment, A-SA-AS. Graded beds.	
1002.2	1026.0			Thick bedded to medium bedded sediment. Graded quartzites, some lenticular fragmental zones (similar to chaotic fragmental e.g. 1018' and 1020'). Laminated to thinly laminated section (.5') at 1216.5', a few very thin beds at 1022'.	
1026.0	1030.0			Thin bedded-very thin bedded-laminated sediment, A-SA-AS. Some irregular and/or abrupt contacts.	
1030.0	1050.0			Very thick bedded-thick bedded sediment, predominantly quartzites. Beds are separated by thin to very thin massive argillite beds. Beds appear well sorted with bases at: 1035.8', 1040.5', 1044.5' and 1050.0'.	

Core Size

HQ

Core No.

6423

Page

8

15

Diamond Drill Geological Log



Objective: _____ Sampled: _____

Logged By: A. S. Hagen Date: _____ Composites: _____

Block: _____ Sect: _____ Piece: _____ App. Bear: _____ App. Dip: _____ Length: _____

From: _____ To: _____ Discard: _____ Reason: _____

1050.0-1104.0 Thick bedded medium bedded sediment. Lower portion of beds are predominantly A5 with occasional indication of quartz grains. Upper portion of beds usually alternating massive, light grey argillite and medium dark grey SA. The majority of these thin alternating beds show a disturbance resulting in an erratic, lens-like (similar to chaotic fragmental) deposition. Occasional clasts noted in lower A5 portion.

1104.0-1112.5 Gabbro dike intersects core at 60°. Sediment moderately shattered and broken at contacts. Gabbro moderately broken throughout, medium to fine grained.

1112.5-1148.0 Same as from 1,050,0' to 1,104,0'. A0 beds with chaotic fragmental tops at 1,120' (1') and 1,123' (2'). Graded bed, SA to Q, base at 1141'. A minor irregular chlorite rich sediment at 1134,5'.

1148.0-1156.0 Medium bedded-thin bedded-very thin bedded sediment, A-SA. Contacts are conformable, deposition shows very little to no disturbance. Bdg. 70° to core.

1156.0-1303.0 Same as from 1050,0' - 1104,0' and 1112,5' - 1148,0'. Graded quartzite with base at 1166' (4' bed, upper 1,3' illustrating chaotic, dark-light features common to many of these beds). Some of the disturbed (chaotic) portions of the beds account for more than half the thickness of the beds. There are occasional, very conformable thin to very thin A-SA beds. 1' graded A to Q bed at 1172'. Bdg. 78° to core @ 1180', 74° to core @ 1230'. Fine pyrite gives unusual mottling effect at 1279'. Gabbro 1267' to 1268' badly broken.

Core Size
HQ

1303.0-1335.0 Thick bedded-medium bedded sediment, similar to above with the introduction of alternating massive, light grey argillite and medium dark, biotitic argillite zones occurring at: 1303' (1'), 1306' (1.7'), 1312' (.8'), 1316' (1') Cont'd.

Hole No.
6423

Page
9

40 Scale

Color Plot & Dip Ore Classes & Aver.

0

Diamond Drill Geological Log



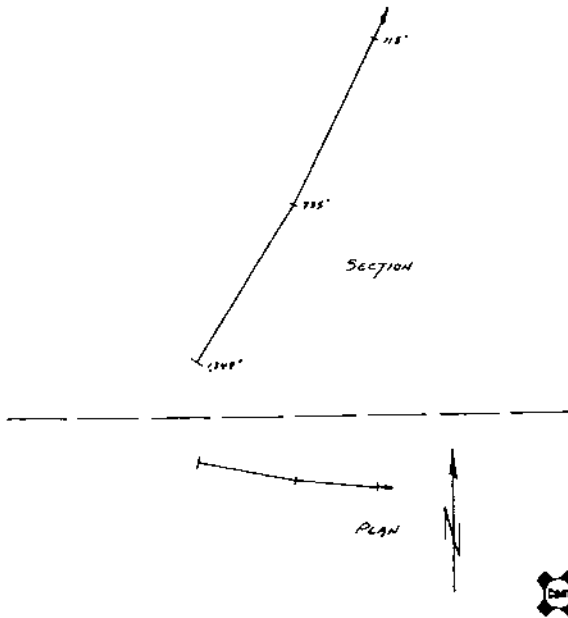
Objective:		Sampled:				40 Scale	
Logged By: A. S. Hagen		Date:		Composites:		Color Plot & Dip	Ore Classes & Aver.
Block:	Sect:	Place:	App. Bear:	App. Dip:	Length:		
From:	To:	Discard:	Reason:				
- 1335.0	1317.5' (.6')	1320 (.7')	1326.5 - 1329.7 (narrow sections within thin bedded zone of A-SA-AS. 1334.5' (.5'), other singular light, very thin beds occur within this section. The alternating dark-light coloured beds are within the very thin to laminated to thinly laminated range. The dark beds are peppered with minute flecks of biotite which cause the colour difference in these alternating dark-light beds. Occasional calcareous concretion. Bdg. 72° to core.				
1335.0	1349.0		Thick bedded-medium bedded sediment, A-SA-AS, grading vague. Calcareous concretion at 1339', cross bedding at 1346'.				
A common feature of the rocks intersected in this hole is the fine, pyrite healed fracturing occurring in variable amounts throughout.							
END 6423							
Lat. 2300 N.							
Dep. 18,080E.							
Elev. 3,580.							
Dip -65°							
Azim. 270° See attached survey							
						Core Size	
						HQ	
* Note: Casing remains in hole, capped.						Note No. Page	
						6423 10	

17

<u>RDG.</u> <u>SEQUENCE</u>	<u>FOOTAGE</u>	<u>DIP</u>	<u>AZIMUTH</u>
1	230'	-64°	254° + 22° = 276°
2	1,275'	-57 1/4°	259° + 22° = 281°

EXTRAPOLATION

<u>FOOTAGE</u>	<u>DIP</u>	<u>AZIMUTH</u>	<u>H.C.</u>	<u>V.C.</u>
0-115'	-65°	270°	48.60'	104.23'
115'-735'	-64°	276°	271.79'	557.25'
735'-1349'	-57 1/4°	281°	327.63'	519.26'
<u>TOTALS</u>			648.02'	1,180.74'



Drawn by: <i>ASH/ugen</i>		Traced by:	
Revised By:	Date:	Revised By:	Date:

SPERRY SUN SINGLE SHOT SURVEY
D.D. 6423

Scale: 1" = 400' Date: January/78 Plate:

Footage

0'-32'	Invoice # 4177C	\$ 603.20
32'-757'	Invoice # 4188C	14,046.45
757-1349	Invoice # 4200C	12,100.20
		<hr/>
		\$26,749.85

Hourly Charges:

Invoice # 4177C	580.00
Invoice # 4188C	2,575.00
Invoice # 4200C	1,645.00
	<hr/>
	\$ 4,800.00

Materials:

Invoice # 4188C Shoe	\$ 321.75
Invoice # 4200C Casing & Shoe	2,715.44
Plus 10% O.H.	303.72
	<hr/>
	\$ 3,340.91

Mud Supplies:

Invoice # 4177C,4188C,4200C \$ 3,516.00

Core Boxes

70 Boxes @ \$3.10 + freight, tax and O.H. \$ 308.87

Water Haul:

Sunrise Exc. 76,000 gallons \$ 1,386.60

Cominco Charges:

Equipment rental - site & drill movement	\$ 753.00
Geol. Supervision and truck rental	
1349 feet x \$1.50/ft. drilled	2,023.00
Core Storage (1349'- 202') x \$0.15/ft.	172.00
Reclamation of site - contour ground	
grass seed and fertilize	400.00
	<hr/>
	\$ 3,348.00

Contractors original Mobilization and Demobilization. Pro-rated at \$0.294/ft.

\$ 396.61

<u>Total Expenditure</u>	<u>\$43,846.84</u>
<u>Total Drilling Cost</u>	<u>\$43,446.84</u>
<u>Physical-Reclamation</u>	<u>\$ 400.00</u>

NOTE: D.D.C.H. 6423 drilling started August 30, 1977. Mineral claims Fal 1, and Fal 2, were staked September 10, 1977 and recorded on October 5, 1977. Dip 9, Dip 10, Dip 11 we staked Sept. 12, 1977 and recorded Sept. 15, 1977. On Sept. 10, 1978 D.D.C.H. was in overburden at a depth of 198 feet, and bottomed at 1349 ft. on Sept. 28, 1977. Application for work done is pro-rated as follows.

$$\frac{1349' - 198'}{1349'} \times \$43,846.84 = \$37,410.00 \quad (\text{physical \& drilling})$$

19
MB.1

George Whitehead
 385 Archibald ST.
 Kimberley B.C.

Cost of reclamation & moving
 diamond drill (# 6422 on A Porier property)

Oct. 24	th	moving drill	2 hrs	\$	40.00
"	"	Reclamation	3 "	\$	60.00
"	25	th	7 "	\$	140.00
"	26	th	5 "	\$	100.00
"	29	th	2 "	\$	40.00
Cost of hauling Cat				\$	31.50
				\$	411.50 371.50

~~Reclamation (# 6422 on I. Barrett property)~~

Nov.	1	th	5 hrs	\$	100.00
"	2	th	2 "	\$	40.00
"	3	th	6 1/2 "	\$	130.00
"	4	th	2 "	\$	40.00
"	8	th	2 "	\$	40.00
"	9	th	3 "	\$	60.00
"	10	th	7 "	\$	140.00
"	11	th	3 "	\$	60.00
"	12	th	3 "	\$	60.00
Cost of hauling Cat				\$	31.50
				\$	1131.50

DUE ON PORIER PROPERTY \$ 411.50

DUE ON BARRETT PROPERTY \$ 1131.50

TOTAL DUE ON THE TWO PROPERTIES \$ 1543.00

RATE \$ 20.00 PER HOUR

VANCOUVER
TELEPHONE 736-2641
TELEX 04-508887
KAMLOOPS
TELEPHONE 374-1152
TELEX 0488184



THE TONTO GROUP OF COMPANIES

Tonto Drilling Company
1215 West 7th Avenue
VANCOUVER, B.C. V6H 1B7

JOINT WITH

Cominco Ltd.
P.O. Box 2000
Kimberley, B.C.
V1A 2G3

CONTRACT NO. 287
INVOICE NO. 5030M
DATE October 19, 1977
TO

PROPERTY Sullivan Mine PO S12515R

TO ADJUST PREVIOUS INVOICES AS PER THE FOLLOWING:

Invoice No. 4200C

Charge	592' x .85 =	503.20		
Credit	7 1/2 hrs. x 50.00 =	(375.00)	Total	128.20 ✓

Invoice No. 4188C

Charge	725' x .85 =	616.25		616.25 ✓
--------	--------------	--------	--	----------

Invoice No. 4177C

Charge	576' x .85 =	489.60		489.60
--------	--------------	--------	--	--------

Invoice No. 4177C

Credit	23/08/77 hole no. 6418 12 hrs. extra labour @ \$18.50/hr.			<u>(222.00)</u>
--------	--	--	--	-----------------

\$ 1,012.05 ✓

*This invoice
finalizes all corrections
to the end of DD 6423*

VANCOUVER
 PHONE 736-2641
 04-808557
 KAMLOOPS
 TELEPHONE 374-1152
 TELEX 0488184



THE TONTO GROUP OF COMPANIES
 TONTO DRILLING COMPANY
 1215 WEST 7TH AVENUE

VANCOUVER, B.C. V6H 1B7

ACCOUNT WITH

COMINCO LTD.
 P. O. BOX 2000
 KIMBERLEY, B. C.
 V1A 2G3

CONTRACT NO. 287
 INVOICE NO. 4177C
 DATE 31/08/77

PROPERTY COMINCO - SULLIVAN MINE PO S12515R 16/08/77 TO 31/08/77

FOOTAGE DRILLED

RIG#	HOLE	SIZE	FROM	TO	ANGLE RATE	TOTAL
CP501	6418	244.00 FEET HQ	4256.00	4500.00	35.00 ✓	<u>8540.00</u>
44-4	6422	48.00 FEET HQ	1452.00	1500.00	20.00 ✓	960.00
44-4	6422	436.00 FEET HQ	1500.00	1936.00	21.50 ✓	<u>9374.00</u>
44-4	6423	32.00 FEET HW	.00	32.00	18.00 ✓	576.00
TOTAL						✓ 19450.00
D. B. FOOTAGE			32.00			
CORED FOOTAGE			728.00			
TOTAL FOOTAGE			760.00			

See INVOICE 5030M for rate adjustment.

736-2641
 04-508887
 LDDPS
 NE. 374-1182
 0488154



THE TONTO GROUP OF COMPANIES
 TONTO DRILLING COMPANY
 1215 WEST 7TH AVENUE
 VANCOUVER, B.C. V6H 1B7

ACCOUNT WITH

COMINCO LTD.
 P.O. BOX 2000
 SIMMERLEY, B. C.
 V1A 2G3

CONTRACT NO. 287
 INVOICE NO. 4177C
 DATE 31/08/77

PARTY COMINCO - SULLIVAN MINE PU S12G15R 16/08/77 TO 31/08/77

HOURLY CHARGES

16/08/77	6418	✓	1.50 HOURS TESTING/LOG/SURVEY	50.00	75.00
17/08/77	6418	✓	1.50 HOURS TESTING/LOG/SURVEY	50.00	75.00
07/08/77	6418	✓	1.00 HOURS TESTING/LOG/SURVEY	50.00	50.00
07/08/77	6418	✓	4.00 HOURS MOVING (MOB/DEMOB)	40.00	160.00
17/08/77	6418	✓	12.00 HOURS MOVING (MOB/DEMOB)	40.00	480.00
17/08/77	6418	✓	24.00 HOURS EXTRA LABOUR	18.50	444.00
27/08/77	6418	✓	8.00 HOURS MOVING (MOB/DEMOB)	40.00	320.00
27/08/77	6418	✓	16.00 HOURS EXTRA LABOUR	18.50	296.00
27/08/77	6418	✓	12.00 HOURS EXTRA LABOUR	18.50	222.00
05/08/77	6422	✓	1.50 HOURS TESTING/LOG/SURVEY	50.00	75.00
07/08/77	6422	✓	1.50 HOURS RECOVER EQUIP/FISHING	50.00	75.00
07/08/77	6422	✓	1.00 HOURS CONDITION HOLE	50.00	50.00
07/08/77	6422	✓	1.00 HOURS WAITING TIME	50.00	50.00
17/08/77	6422	✓	2.00 HOURS RECOVER EQUIP/FISHING	50.00	100.00
17/08/77	6422	✓	1.00 HOURS CONDITION HOLE	50.00	50.00
27/08/77	6422	✓	12.00 HOURS TRIPPING RODS	50.00	600.00
31/08/77	6422	✓	1.00 HOURS CONDITION HOLE	50.00	50.00
31/08/77	6422	✓	2.00 HOURS WAITING TIME	50.00	100.00
47/08/77	6422	✓	11.50 HOURS TRIPPING RODS	50.00	575.00
57/08/77	6422	✓	3.00 HOURS DRILLING - CAVE/SAND	50.00	150.00
57/08/77	6422	✓	7.00 HOURS TRIPPING RODS	50.00	350.00
67/08/77	6422	✓	3.00 HOURS DRILLING - CAVE/SAND	50.00	150.00
67/08/77	6422	✓	1.00 HOURS CONDITION HOLE	50.00	50.00
77/08/77	6422	✓	2.00 HOURS WAITING TIME	50.00	100.00
87/08/77	6422	✓	3.50 HOURS TESTING/LOG/SURVEY	50.00	175.00
87/08/77	6422	✓	7.00 HOURS MOVING (MOB/DEMOB)	40.00	280.00
97/08/77	6422	✓	11.00 HOURS MOVING (MOB/DEMOB)	40.00	440.00
97/08/77	6422	✓	22.00 HOURS EXTRA LABOUR	18.50	407.00
08/77	6423	✓	7.00 HOURS MOVING (MOB/DEMOB)	40.00	280.00
17/08/77	6423	✓	4.00 HOURS SETTING CASING	50.00	200.00
17/08/77	6423	✓	2.00 HOURS REAMING	50.00	100.00

1900.00

580.00

6529.00

MUD CIRCULATION PRODUCTS

315.00 BGS.	QUICK-GEL	5.19	1634.85
15750.00 LBS	FREIGHT PER 100 LBS	1.16	182.70
315.00 BGS.	QUICK-TROL	6.85	2157.75
630.00 LBS	FREIGHT PER 100 LBS	1.16	7.31
437.00 GALS	DIESEL	.60	262.20
4370.00 LBS	FREIGHT PER 100 LBS	1.16	50.69
332.00 GALS	KUTWELL	1.35	448.20
3320.00 LBS	FREIGHT PER 100 LBS	1.16	38.51
PLUS 10.00 %			478.22

5260.43

MATERIALS CONSUMED

97/08/77	6418	✓	11.00 10 FT. LENGTH HW CASING	117.97	1297.67
----------	------	---	-------------------------------	--------	---------

736-2641
04-508887

WLOOPS
374-1152
0488154



THE TONTO GROUP OF COMPANIES

TONTO DRILLING COMPANY
1215 WEST 7TH AVENUE

VANCOUVER, B.C. V6H 1B7

ACCOUNT WITH

COMINCO LTD.
P. O. BOX 2000
KIMBERLEY, B. C.
V1A 2G3

CONTRACT NO. 287
INVOICE NO. 4177C
DATE 31/08/77

PROPERTY COMINCO - SULLIVAN MINE FO S12515R 16/08/77 TO 31/08/77

19/08/77	6418	2.00	5 FT. LENGTH HW CASING	66.29	132.58
19/08/77	6418	2.00	2 FT. LENGTH HW CASING	34.29	68.58
19/08/77	6418	1.00	HW SHOE S/N 1321	160.50	160.50
24/08/77	6422	1.00	HW BIT S/N 40518	876.11	876.11
30/08/77	6423	1.00	HW CASING 10 FT	117.97	117.97
30/08/77	6423	1.00	HW CASING 5 FT.	66.29	66.29
		PLUS	10.00 %		271.97

2991.67

OTHER CHARGES

3 PTY

1.00 TO CHARGE 10% ON THIRD PARTY 6.82 6.82 ✓

CREDIT

1.00 HR CREDIT RE INVOICE 4169C 1 HR. REAMING 50.00 50.00- ✓

1.00 HR CREDIT RE INVOICE 4169C 1 HR CONDITIONING 50.00 50.00- ✓

✓ 93.18-

TOTAL AMOUNT OF INVOICE

34137.92



THE TONTO GROUP OF COMPANIES

TONTO DRILLING COMPANY
1215 WEST 7TH AVENUE
VANCOUVER, B.C. V6H 1B7

41
08557
OPS
374-1152
0488154

WITH

MINCO LTD.
O. BOX 2000
MBERLEY, B. C.
A 2G3
ERTY

CONTRACT NO.
INVOICE NO. 287
DATE 4188C
TO 15/09/77

COMINCO - SULLIVAN MINE PO S12515R 01/09/77 15/09/77

FOOTAGE DRILLED

G#	HOLE	SIZE	FROM	TO	ANGLE	RATE	TOTAL	
-4	6423	18.00 FEET HW	32.00	50.00	15.85	18.00 ✓	324.00	339.30
-4	6423	50.00 FEET HW	50.00	100.00	19.25	18.40 ✓	920.00	962.50
-4	6423	50.00 FEET HW	100.00	150.00	19.65	18.80 ✓	940.00	982.50
-4	6423	50.00 FEET HW	150.00	200.00	20.05	19.20 ✓	960.00	1002.50
-4	6423	2.00 FEET HW	200.00	202.00	20.45	19.60 ✓	39.20	40.90
-4	6423	298.00 FEET HQ	202.00	500.00	18.65	18.00 -	5364.00	5617.30
-4	6423	257.00 FEET HQ	500.00	757.00	17.85	19.00 -	4883.00	5101.45
TOTAL							19430.20	
O. B. FOOTAGE							170.00	
CORED FOOTAGE							555.00	
TOTAL FOOTAGE							725.00	

CORE

Diff 616.25

See INVOICE 5030M for rate adjustment

576' @ .85 to be added 489.60

no cred from 4177 @ 222.00

725' (5030M 4188 @) @ .85 = 616.25 to be added

2641
508557
LOOPS
PHONE 374-1152
0488154



THE TONTO GROUP OF COMPANIES

TONTO DRILLING COMPANY
1215 WEST 7TH AVENUE
VANCOUVER, B.C. V6H 1B7

CONT WITH

DOMINCO LTD.
P.O. BOX 2000
IMBERLEY, B.C.
1A 2G3

PROPERTY

CONTRACT NO.

INVOICE NO. 287

DATE 4188C

TO 15/09/77

~~DOMINCO - SULLIVAN MINE PO S12515R 01/09/77 15/09/77~~

HOURLY CHARGES

1/09/77 6423	7.50 HOURS SETTING CASING	50.00	375.00
1/09/77 6423	4.50 HOURS REAMING	50.00	225.00
3/09/77 6423	4.00 HOURS SETTING CASING	50.00	200.00
3/09/77 6423	5.00 HOURS PULLING CASING	50.00	250.00
3/09/77 6423	2.50 HOURS REAMING	50.00	125.00
4/09/77 6423	12.00 HOURS PULLING CASING	50.00	600.00
7/09/77 6423	5.00 HOURS SETTING CASING	50.00	250.00
0/09/77 6423	5.00 HOURS PULLING CASING	50.00	250.00
0/09/77 6423	3.00 HOURS REAMING	50.00	150.00
1/09/77 6423	2.00 HOURS PULLING CASING	50.00	100.00
1/09/77 6423	1.00 HOURS REAMING	50.00	50.00

2575.00

MUD CIRCULATION PRODUCTS

76.00 BGS. ✓	QUICK-GEL	5.19	394.44
3800.00 LBS	FREIGHT PER 100 LBS	1.16	44.08
59.00 BGS. ✓	QUICK-TROL	6.85	404.15
118.00 LBS	FREIGHT PER 100 LBS	1.16	1.37
117.00 GALS ✓	DIESEL	.60	70.20
1170.00 LBS	FREIGHT PER 100 LBS	1.16	13.57
107.00 GALS ✓	KUTWELL	1.35	144.45
1070.00 LBS	FREIGHT PER 100 LBS	1.16	12.41
PLUS 10.00 %			108.47

1193.14

MATERIALS CONSUMED

3/09/77 6423	1.00 HW SHOE S/N 1491	321.75	321.75 ✓
PLUS 10.00 %			32.18

353.93

THIRD PARTY CHARGES

E. G. WHALLEY & SON LTD.			663.40 ✓
8133			331.70 ✓
8107			
MILLAR & BROWN LTD.			80.60
103387167			107.57 ✓
PLUS 10.00 %			

1183.27 ✓

TOTAL AMOUNT OF INVOICE

18735.54

PHONE 433-6141



5791 BERESFORD STREET
BURNABY, B.C. V5J 1J9

DIAMOND DRILL
REPAIRS & SERVICE
CORE BOXES
WIRE-LINE HOISTS

Aug. 17/77

TO Tonto Drilling Ltd.
1215 W. 7th Ave.
Vancouver, B. C.

RECEIVED AUG 18 1977

TO Above, Kimberley, B. C.

ORDER DATE
Aug. 2/77

TERMS: NET 15th OF MONTH FOLLOWING

SALES TAX LIC. No.	EXEMPT
S.S.M.A. TAX No.	EXTRA
CUSTOMER'S ORDER No.	0183
SHIPPING DATE	Aug. 3/77
P.P.O.	X
COLL.	

Millar & Brown OUR ORDER NO. 2614

QUANTITY	BACK O.	DESCRIPTION	UNIT PRICE	QTY. SHIPPED	AMOUNT
100		HQ Core Boxes	3.10	100	\$310.00
		7% PST			21.70
					\$331.70

CODE	SUB	JOB	Description	Amount	3rd Party Charge
655	000	187			Yes

ENTERED SEP 26 1977

Pre'd. By: App'd. By: *[Signature]*

RECEIVED TERMS: ACCOUNTS DUE & PAYABLE ON OR BEFORE 30 DAYS FROM DATE OF INVOICE, 2% PER MONTH CHARGED ON OVERDUE AMOUNTS. No 8107 TOTAL \$331/70

TERMS AND CONDITIONS OF THIS ORDER
 THREE COPIES REQUIRED WITHIN 3 DAYS OF SHIPMENT OF GOODS.
 No substitute or changes without authority from us.
 Shipping slip(s) to be supplied with all goods shipped or services rendered.
 Confirmation of phone order Yes No

FEDERAL SALES TAX
 Included ___ Extra ___ Exempt ___
 JOB No. _____
 TONTO DRILLING COMPANY
 Per _____

VOICE

PHONE: 433-1141



5791 BERESFORD STREET
BURNABY, B.C. V5J 1J9

Aug. 24 1977

RECEIVED AUG 25 1977

DIAMOND DRILL
REPAIRS & SERVICE
CORE BOXES
WIRE-LINE HOISTS

TERMS: NET 15th OF MONTH FOLLOWING

SALES TAX LIC. NO.

EXEMPT

S.S.M.A. TAX NO.

EXTRA

CUSTOMER'S
ORDER NO. 0210

SHIPPING
DATE Aug. 16 & 18/77

P.P.D. X
COLL

OLD TO Tonto Drilling Ltd.
1215 West 7th Ave.
Vancouver, B. C.

SHIP TO Above - Kimberley B C

ORDER DATE
Aug. 11/77

A Millar & Brown and P.W.A.

OUR ORDER NO. 2628

ORDERED	BACK O.	DESCRIPTION	UNIT PRICE	QTY. SHIPPED	AMOUNT
100		HQ Core Boxes	3.10	200	\$620.00
		7% PST			43.40
					\$663.40

CODE	SUB	JOB	Description	Amount	3rd Party Charge
655	800	187			
Fed. By.			App'd. By: <i>[Signature]</i>		

ENTERED SEP 26 1977

RECEIVED
TERMS: ACCOUNTS DUE & PAYABLE ON OR BEFORE
30 DAYS FROM DATE OF INVOICE. 2% PER MONTH
CHARGED ON OVERDUE AMOUNTS.

No 8133

TOTAL \$663.40

TERMS AND CONDITIONS OF THIS ORDER

VOICE COPIES REQUIRED WITHIN 3 DAYS OF SHIPMENT OF GOODS.
We do not substitute or changes without authority from us.
Shipping slip(s) to be supplied with all goods shipped or services rendered.
Information of phone order

Yes No

FEDERAL SALES TAX

Included _____ Extra _____ Exempt _____

JOB No.

TONTO DRILLING COMPANY

Per _____

SHIPPER'S B/L NO NO DU L'IMP. DE L'EXP	29 77 101	CONSIGNEE CODE SIGNATAIRE	103 387167
CARRIER - NAME & PRO NO NOM DE CAMIONNEUR INTERMEDIAIRE ET NO DU PRO		REVENUE REVENU	RETUND FRAIS AU DELA

DELIVERED FROM - REÇU DE
TRANSFERRED TO - TRANSFÉRÉ À

D-U-N-5 20-095-4717

CONSIGNEE - CONSIGNATAIRE
TONTO DRILLING LIMITED
 1215 - 7TH AVE. WEST
~~KIMBERLEY BC~~ VANCOUVER, B.C.
 SHIPPER - EXPLOITEUR
CANADIAN LONGYEAR LIMITED
 NEW WESTMINSTER BC

MILLAR & BROWN LTD.

DIRECT WINTERS TRANSPORT LIMITED • DIRECT MOTOR EXPRESS (QUEBEC) LIMITED
 DIRECT WINTERS TRANSPORT (WESTERN) LIMITED

Remit to / Faire Remise à
 PLEASE REMIT TO
I & B LTD.
 FREIGHT TERMINAL
 BOX 610

NO. PIECES NO. PAQUETS	DESCRIPTION OF ARTICLES AND MARKS DESCRIPTION DES ARTICLES ET MARQUES	ENTERED SEP 13 1977	QUANTITY	RATE	AMOUNT MONTANT	PPD OR COL
2	BDLES HW 10" CASING		1300	620	80.60	COL

PAYABLE IN 7 DAYS
 PAYABLE DANS LES 7 JOURS

815 000 187 *yes*

PLEASE RETURN DUPLICATE WITH YOUR PAYMENT / RETOURNER DUPLICATA AVEC VOTRE PAIEMENT **4 ORIGINAL INVOICE - FACTURE ORIGINALE**

C.O.D. COLLECTIONS MUST BE CASH OR MARKED CHECKS / LES LIVRAISONS C/REMB. SONT PAYABLES COMPTANT OU PAR CHEQUE VISÉ

2R
738-2641
04-808857
LOOPS
ONE 374-1152
0488154



THE TORONTO GROUP OF COMPANIES

TORONTO DRILLING COMPANY
1215 WEST 7TH AVENUE

VANCOUVER, B.C. V6H 1B7

ACCOUNT WITH

COMINCO LTD.
P. O. BOX 2000
KIMBERLEY, B. C.
VIA 2G3

CONTRACT NO. 287
INVOICE NO. 4200C
DATE 30/09/77

PROPERTY COMINCO - SULLIVAN NINE PO S12515R 16/09/77 TO 30/09/77

FOOTAGE DRILLED

RIG#	HOLE	SIZE	FROM	TO	ANGLE RATE	TOTAL
44-4	6423	243.00 FEET HQ	757.00	1000.00	19.00 ⁵⁵	4617.00
44-4	6423	349.00 FEET HQ	1000.00	1349.00	20.00 ⁵⁵	6980.00
		TOTAL				11597.00
		O. B. FOOTAGE	.00			
		CORED FOOTAGE	592.00			
		TOTAL FOOTAGE	592.00			

Short 592' @ .85 \$ 503.20
See INVOICE # 5030 M
for rate adjustment

TOTAL COST

\$ 12,100.20

VER
736-2641
04-508557
LOOPS
ONE 374-1152
0488154



THE TONTO GROUP OF COMPANIES

TONTO DRILLING COMPANY
1215 WEST 7TH AVENUE

VANCOUVER, B.C. V6H 1B7

ACCOUNT WITH

COMINCO LTD.
P. O. BOX 2000
KIMBERLEY, B. C.
V1A 2G3

CONTRACT NO. 287
INVOICE NO. 4200C
DATE 30/09/77

PROPERTY COMINCO - SULLIVAN MINE PO S12515R 16/09/77 TO 30/09/77

HOURLY CHARGES

16/09/77 6423	3.00 HOURS	REAMING ✓	50.00	150.00
16/09/77 6423	2.00 HOURS	CONDITION HOLE ✓	50.00	100.00
20/09/77 6423	1.00 HOURS	WAITING TIME ✓	50.00	50.00
21/09/77 6423	1.00 HOURS	WAITING TIME ✓	50.00	50.00
22/09/77 6423	2.00 HOURS	WAITING TIME ✓	50.00	100.00
23/09/77 6423	2.5. (7.00) HOURS	WAITING TIME See Sheet	50.00	350.00 125.00
24/09/77 6423	2.50 HOURS	REAMING ✓	50.00	125.00
24/09/77 6423	n.l. (5.00) HOURS	WAITING TIME See Sheet	50.00	250.00 0
25/09/77 6423	2.00 HOURS	TESTING/LOG/SURVEY ✓	50.00	100.00
26/09/77 6423	3.00 HOURS	PUMPING OUT SUMP ✓	50.00	150.00
27/09/77 6423	1.50 HOURS	TESTING/LOG/SURVEY ✓	50.00	75.00
27/09/77 6423	5.00 HOURS	MOVING (MOB/DEMOB) ✓	40.00	200.00
28/09/77 6423	8.00 HOURS	MOVING (MOB/DEMOB) ✓	40.00	320.00

1625.00
~~2020.00~~

*we did their
joints come from?
works
by 1/11/77 higher*

MUD CIRCULATION PRODUCTS

163.00 BGS.	QUICK-GEL	5.19	845.97
8150.00 LBS	FREIGHT PER 100 LBS ✓	1.16	94.54
65.00 BGS.	QUICK-TROL ✓	6.85	445.25
130.00 LBS	FREIGHT PER 100 LBS	1.16	1.51
203.00 GALS	DIESEL	.60	121.80
2030.00 LBS	FREIGHT PER 100 LBS ✓	1.16	23.55
159.00 GALS	KUTWELL	1.35	214.65
1590.00 LBS	FREIGHT PER 100 LBS ✓	1.16	18.44
2.00 BGS.	ASBESTOS	19.66	39.32
200.00 LBS	FREIGHT PER 100 LBS ✓	1.16	2.32
PLUS 10.00 %			180.74

1988.09

MATERIALS CONSUMED

28/09/77 6423	20.00 HW CASING (10 FT)	117.97	2359.40
28/09/77 6423	1.00 HW CASING (2 FT) ✓	34.29	34.29
28/09/77 6423	1.00 HW SHOE (1491 ?) ✓	321.75	321.75
PLUS 10.00 %			271.54

2986.98

TOTAL AMOUNT OF INVOICE

18592.07

double charge

SHIP NUMBER	49491
DATE	
CUSTOMER'S ORDER	512957R
SALESMAN	
TERMS	
F.O.B.	

SOLD TO Cominus
 SHIPPED TO 6422
 ADDRESS Meadowbrook Drilling Site

INVOICE

09/08	1000	67ms	water with pump	1.0	19.50	19.50
10/08	1000	✓	✓	✓	✓	1.0 19.50 19.50
11/08	6000	✓	✓	✓	✓	6.0 19.50 117.00
12/08	7000	✓	✓	✓	✓	7.0 19.50 136.50
13/08	2000	✓	✓	✓	✓	2.0 19.50 39.00
14/08	2000	✓	✓	✓	✓	2.0 19.50 39.00
15/08	3000	✓	✓	✓	✓	3.0 19.50 58.50
16/08	1000	✓	✓	✓	✓	1.0 19.50 19.50
17/08	1000	✓	✓	✓	✓	1.0 19.50 19.50
18/08	4000	✓	✓	✓	✓	4.0 19.50 78.00
						546.00

REDIFORM - 7M32

SHIPPED TO 6422
 ADDRESS Meadowbrook Drilling Site

TERMS	F.O. 512957R
F.O.B.	

INVOICE

19/08	5000	67ms	water with pump	5.0	19.50	97.50
20/08	1000	67ms	water with pump	1.0	19.50	19.50
21/08	3	67ms	water with pump	3.0	19.50	58.50
22/08	1	67ms	water with pump	1.0	19.50	19.50
23/08	7	67ms	water with pump	7.0	19.50	136.50
24/08	4	67ms	water with pump	4.0	19.50	78.00
25/08	4	67ms	water with pump	4.0	19.50	78.00
26/08	2	67ms	water with pump (DOW)	2.0	19.50	39.00
26/08	5000	67ms	water with pump (DOW)	5.0	19.50	97.50
27/08	7000	67ms	water with pump (DOW)	7.0	19.50	136.50
28/08	1000	67ms	water with pump	1.0	19.50	19.50
			END OF DRILLING - @ MEADOWBROOK			780.00

REDIFORM - 7M31

SITE #1

SHIPPED TO
 ADDRESS Drill Hole # 6423 VIA

TERMS	
F.O.B.	

INVOICE

<u>Moving from old well site Meadowbrook Drilling Site</u>						
29/08	TRUCK + TRAILER move tank			4.0	20.-	80.-
29/08	2 men - @ 4.5 hr 3.0			7.5	8.-	60.-
	assist in handling tank - move new site setup					
29/08	commence DROT tank			n/c		n/c
						140.00

SUNRISE EXCAVATING LTD.

BOX 233
KIMBERLEY, B.C. VIA 2Y6

SOLD TO Commeo

SHIPPED TO DR 6423

ADDRESS Meadow Brook Hill Site VIA

OUR NUMBER	008282
DATE	
CUSTOMER'S ORDER	PO 512957 R
SALESMAN	
TERMS	
F.O.B.	

INVOICE

21/09	1000	(-PL) WATER WITH	2000	10	18	1800
21/09	3000	✓	✓	30	18	5400
22/09	7500	✓	✓	7.5	18	13500
23/09	9000	✓	✓	9.0	18	16200
24/09	9000	✓	✓	9.0	18	16200
25/09	1000	✓	✓	10	18	1800
						54900
						12500
						42400

[Handwritten signature]

2011/12/21 ETC



Adjustment Advice

Attention Accounts Receivable

To adjust the account of:

Trail, B.C.

Sunrise Excavating Ltd.,

Date Oct. 7/77

Box 233

Our ref. S12957R

Kimberley, B.C.

Your billing ref.:	008282	Date	
Total credit <input type="checkbox"/> debit <input checked="" type="checkbox"/> to us		\$	549.00
Should be		\$	424.00
We have deducted from <input checked="" type="checkbox"/> added to <input type="checkbox"/> your acct.		\$	125.00

The above invoice has been corrected and is now being processed for payment. Our cheque statement will show the original invoice total plus or minus this adjustment. Please correct your records accordingly.

Explanation: To deduct for two and one-half hours standby time due to the unavailability of water.

Total adjustment in our favour: 125.00

Sullivan Mine Whse.,
Kimberley

To TIT Sept 7

SUNRISE EXCAVATING LTD.

BOX 213

EMERYLY, B.C. VIA 2Y6

OUR NUMBER	008215
DATE	
CUSTOMER'S ORDER	512957R
SALESMAN	
TERMS	
F.O.B.	

SOLD TO Chapman

SHIPPED TO ADDRESS Drill hole # 6423 VIA

INVOICE

29/08	3000 GALS WATER WITH PUMP	3.0	18	54.00
30/08	8:30 AM 1000 " " " "	1.0	18	18.00
30/08	7:15 PM " " " "	1.0	18	18.00
30/08	9:10 PM 600 GALS " " " "	.6	18	10.80
31/08	1600 GALS " " " "	1.6	18	28.80
01/09	2500 GALS " " " "	2.5	18	45.00
				<u>174.60</u>

[Handwritten Signature]

SUNRISE EXCAVATING LTD.

Box 211
Kimbley, B.C. VIA 2Y6

OUR NUMBER	008230
DATE	
CUSTOMER'S ORDER	PO 512957 R
SALESMAN	
TERMS	
F.O.B.	

SOLD TO Cominco

SHIPPED TO
ADDRESS Drumheller 6423 VIA

INVOICE

02/09	500	CONCRETE WATER WITH PUMP	✓	✓	✓	✓	1.5	18-	9	-
03/09	500	CONCRETE WATER WITH PUMP	✓	✓	✓	✓	1.5	18-	9	-
04/09	1000	CONCRETE WATER WITH PUMP	✓	✓	✓	✓	1.0	18-	18	-
05/09	1000	CONCRETE WATER WITH PUMP	✓	✓	✓	✓	1.0	18-	18	-
06/09	1000	CONCRETE WATER WITH PUMP	✓	✓	✓	✓	1.0	18	18	-
07/09	1000	CONCRETE WATER WITH PUMP	✓	✓	✓	✓	1.0	18-	18	-
08/09	1000	CONCRETE WATER WITH PUMP	✓	✓	✓	✓	1.0	18	18	-
09/09	1000	CONCRETE WATER WITH PUMP	✓	✓	✓	✓	1.0	18	18	-
10/09	-0-						-0-	-0-	-0-	
11/09	-0-						-0-	-0-	-0-	
12/09	2000	CONCRETE WATER WITH PUMP	✓	✓	✓	✓	2.0	18	36	-
									324	00

REDIFORM - 7M31

162.00 +

SUNRISE EXCAVATING LTD.

Box 211
Kimbley, B.C. VIA 2Y6

OUR NUMBER	008256
DATE	
CUSTOMER'S ORDER	PO 512957 R
SALESMAN	
TERMS	
F.O.B.	

SOLD TO Cominco

SHIPPED TO
ADDRESS Meadowbank Mine Site 6423

INVOICE

13/09	1000	CONCRETE WATER WITH PUMP	✓	✓	✓	✓	1.0	18-	18	00
14/09	3000	CONCRETE WATER WITH PUMP	✓	✓	✓	✓	3.0	18-	54	00
15/09	5000	CONCRETE WATER WITH PUMP	✓	✓	✓	✓	5.0	18-	90	00
16/09	6000	CONCRETE WATER WITH PUMP	✓	✓	✓	✓	6.0	18-	108	00
17/09	4000	CONCRETE WATER WITH PUMP	✓	✓	✓	✓	4.0	18	72	00
18/09	3000	CONCRETE WATER WITH PUMP	✓	✓	✓	✓	3.0	18-	54	00
19/09	2000	CONCRETE WATER WITH PUMP	✓	✓	✓	✓	2.0	18-	36	00
20/09	2000	CONCRETE WATER WITH PUMP	✓	✓	✓	✓	3.0	18-	54	00
									486	00

REDIFORM - 7M31

To warehouse Sept 22/09

VANCOUVER
 TELEPHONE 736-2841
 TELEX 04-508357
 KAMLOOPS
 TELEPHONE 374-1152
 TELEX 0488154



THE TONTO GROUP OF COMPANIES

Tonto Drilling Company
 1215 West 7th Avenue
 VANCOUVER, B.C. V6H 1B7

ACCOUNT WITH

Cominco Ltd.
 P.O. Box 2000
 Kimberley, B.C.
 V1A 2G3

CONTRACT NO. 287

INVOICE NO. 5030M

DATE October 19, 1977

PROPERTY Sullivan Mine PO S12515R

TO

TO ADJUST PREVIOUS INVOICES AS PER THE FOLLOWING:

Invoice No. 4200C

Charge	592' x .85 =	503.20		
Credit	7 1/2 hrs. x 50.00 =	(375.00)	Total	128.20 ✓

Invoice No. 4188C

Charge	725' x .85 =	616.25		616.25 ✓
--------	--------------	--------	--	----------

Invoice No. 4177C

Charge	576' x .85 =	489.60		489.60
--------	--------------	--------	--	--------

Invoice No. 4177C

Credit	23/08/77 hole no. 6418			
	12 hrs. extra labour @ \$18.50/hr.			<u>(222.00)</u>

\$ 1,012.05 ✓

*This invoice
 covers all corrections
 of TD 6423*