

vret.

CANADIAN SUPERIOR EXPLORATION LIMITED  
PERCUSSION DRILLING REPORT  
on the  
COMET PROPERTY

MINERAL RESOURCES BRANCH  
ASSESSMENT REPORT  
**6805**  
NO. \_\_\_\_\_

CANADIAN SUPERIOR EXPLORATION LIMITED

PERCUSSION DRILLING REPORT

on the

COMET PROPERTY

LOCATION: 5 miles West of Kamloops, B.C.

Lat.  $50^{\circ} 40'$  Long.  $120^{\circ} 27'$

N.T.S. 92 I/9W

CLAIMS NAME:

MINT Fr., (L. 1342), CON VERDANT (L. 1341), IRON MASK (L. 878), COPPER QUEEN (L. 880), CIVIL Fr. (L. 1060), ERIN (L. 1066), EARNSCLIFFE Fr. (L. 1301), NORMA (L. 1302), VICTOR (L. 1340), LS 10 (L. 5627), LS 11 (L. 5626), WINTY (L. 4667), DM 61-64, 71, 73, 75, 96-99, 120, 121, and 124, DM 2, 3, and 99 Fractions, MRO 1, 2, and 10, MRO 3-8, 12, and 13 Fractions, RO 5, 7-26, 47-52, 61, OR 1-15, EB 3-12, AUDRA 1 Fr., DELTA 1061, BONNIE JEAN, REX 4 Fr., DEB 1-6, JAN 1-3, JAN 4-8 Fractions.

WORK PERIOD: January 25 to February 8, 1978.

J.J. Morrow, B.Sc.,  
Vancouver, British Columbia,  
June 5, 1978

## TABLE OF CONTENTS

Summary

List of Drill Holes, and Drill Logs

Cost Statement

Illustrations:

Fig. 1. Location map (1:50,000)

Fig. 2. Drill Hole Plan (1" = 400')

Fig. 3. Drill Hole Plan (1" = 400')

Fig. 4. Drill Hole Plan (1" = 400')

## SUMMARY

The Comet property is an irregularly - shaped block of mineral claims measuring approximately 3 miles by 2.5 miles located on the western boundary of the City of Kamloops in south central British Columbia. On April 1, 1976, Canadian Superior Exploration Limited negotiated the rights of mineral exploration from the property owners: Comet Industries, Initial Developers, and Davenport Industries.

The property consists of 112 located mineral claims, 25 Crown granted mineral claims and 1 mineral lease. Ninety-nine located mineral claims and 12 Crown granted mineral claims have been grouped into the Winty, Erin, and Mint groups of mineral claims.

Previous work has included: underground mining, magnetometer surveys, I.P. surveys, geochemical surveys, geological mapping, and over 106,000 feet of combined diamond, rotary and percussion drilling.

The present property covers many old showings including Lucky Strike, Iron Mask, Erin, Larsen, Iron Cap, and DM. Copper mineralization occurs along the northeastern edge of the Upper Triassic Iron Mask batholith where either major fault structures have deformed dioritic and serpentinized basaltic rocks or where microdiorite and micromonzonite porphyry has intruded.

Typical alteration products in the area of chalcopyrite mineralization include epidote, chlorite, potassic feldspar and albite.

\* During 1978, Canadian Superior under-took a percussion drilling program involving 22 percussion drill holes totalling 6220 feet or 1890.6 meters. The purpose of this program was to evaluate known mineralized showings and test anomalous areas not previously drilled. Work was contracted to H.N. Horning Percussion Drilling Ltd. Total cost of the project for 1978 was \$20,215.00.

LIST OF DRILL HOLES

<u>HOLE</u>	<u>FOOTAGE</u>	<u>CLAIM DRILLED ON</u>	<u>FIGURE NO.</u>
P 78-1	300	RO 25	3
P 78-2	300	RO 25	3
P 78-3	300	RO 25	3
P 78-4	300	RO 25	3
P 78-5	300	RO 25	3
P 78-6	300	RO 25	3
P 78-7	280	RO 25	3
P 78-8	300	RO 11	2
P 78-9	300	RO 13	2
P 78-10	300	RO 14	2
P 78-11	300	CON VERDANT	2
P 78-12	300	CON VERDANT	2
P 78-13	300	MAY Fr.	2
P 78-14	300	IRON CAP ML.	2
P 78-15	300	IRON CAP ML.	2
P 78-16	300	IRON CAP ML.	2
P 78-17	150	DM 96	4
P 78-18	300	DM 96	4
P 78-19	300	JAN 1	4
P 78-20	100	JAN 2	4
P 78-21	300	MRO 2	4
P 78-22	290	MRO 2	4

## COMET PROJECT (P-144)

1978 PERCUSSION DRILL HOLE SUMMARY

<u>DRILL HOLE NO.</u>	<u>GRID COORDINATE</u>		<u>ELEVATION</u>	<u>LENGTH OF HOLE</u>	<u>DEPTH OF OVERBURDEN</u>	<u>REMARKS</u>
	<u>LATITUDE</u>	<u>DEPARTURE</u>				
P 78-1	4,400 N	8,600 W	2,234.7'	300'	60'	
P 78-2	4,800 N	8,600 W	2,200.1'	300'	30'	
P 78-3	5,200 N	8,600 W	2,167.3'	300'	20'	
P 78-4	5,000 N	8,400 W	2,192.3'	300'	20'	
P 78-5	4,600 N	8,400 W	2,226.6'	300'	30'	
P 78-6	5,200 N	8,200 W	2,180.1'	300'	20'	
P 78-7	4,800 N	8,200 W	2,207.6'	280'	20'	
P 78-8	2,200 N	1,400 W	2,455.2'	300'	30'	
P 78-9	2,000 N	800 W	2,474.0'	300'	20'	
P 78-10	1,800 N	200 W	2,459.0'	300'	40'	
P 78-11	200 S	1,000 W	2,367.6'	300'	110'	
P 78-12	200 S	1,400 W	2,376.4'	300'	10'	
P 78-13	200 S	1,800 W	2,388.0'	300'	20'	
P 78-14	200 S	2,200 W	2,400.2'	300'	20'	
P 78-15	200 S	2,600 W	2,426.7	300'	20'	
P 78-16	300 S	3,200 W	2,458.4'	300'	20'	
P 78-17	2,400 S	7,600 W	2,499.4'	150'	150'	
P 78-18	2,000 S	7,200 W	2,503.0'	300'	50'	
P 78-19	2,000 S	6,400 W	2,511.7'	300'	50'	
P 78-20	2,400 S	6,000 W	2,548.8'	100'	100'	
P 78-21	2,000 S	5,600 W	2,536.0'	300'	50'	
P 78-22	2,400 S	5,200 W	2,561.6'	290'	130'	

CANADIAN SUPERIOR EXPLORATION LIMITED  
DRILL LOG

Project: COMET (P-144) Hole Size: Percussion Hole No.: P 78-1  
 Claim No.: DEB 2(1) 636  
 Date Started: January 25, 1978 Type Drill: Truck-mounted percussion drill Collar Elevation: 2,234.7 ft.  
 Date Completed: January 25, 1978 Contractor: H.N. Horning Percussion Drilling Ltd. Latitude: 4,400' North  
 Total Depth: 300 ft. Logged By: J.D. Blanchflower Departure: 8,600' West  
 Cased To 60 Ft. Sheet No. 1 of 1 Inclination: -90°  
 Casing Pulled: Yes  No  Chip Board Stored At: Comet Warehouse Bearing: \_\_\_\_\_

Dip and Azimuth Tests: \_\_\_\_\_

FROM	TO	THICKNESS	% RECOVERY	GEOLOGIC DESCRIPTION AND REMARKS	INTERVAL SAMPLED
0	60'	60'		Overburden.	
60'	120'	60'		Cherry Creek monzonite/syenite (6c and d) - well hematitized and Kf flooded. No sulphides.	
120'	140'	20'		Mixed Cherry Creek monzonite (6d) and Nicola volcanics (1b) - intensely sheared and hematitized.	
140'	300'	160'		Nicola volcanics (1b) with minor Cherry Creek monzonite (6d) - well epidotitized and hematitized.	
300'				End of Hole.	

CANADIAN SUPERIOR EXPLORATION LIMITED  
DRILL LOG

Project: COMET (P-144) Hole Size: Percussion Hole No.: P 78-2  
 Claim No.: DEB 2(1) 636  
 Date Started: January 25, 1978 Type Drill: Truck-mounted percussion drill Collar Elevation: 2,200.1 ft.  
 Date Completed: January 26, 1978 Contractor: H.N. Horning Percussion Drilling Ltd. Latitude: 4,800' North  
 Total Depth: 300 ft. Logged By: J.D. Blanchflower Departure: 8,600' West  
 Cased To 30 Ft. Sheet No. 1 of 1 Inclination: -90°  
 Casing Pulled: Yes  No  Chip Board Stored At: Comet Warehouse Bearing: \_\_\_\_\_

Dip and Azimuth Tests: \_\_\_\_\_

FROM	TO	THICKNESS	% RECOVERY	GEOLOGIC DESCRIPTION AND REMARKS	INTERVAL SAMPLED
0	30'	30'		Overburden.	
30'	280'	250'		Cherry Creek monzonite (6d) - pervasively epidotized and albitized. Locally hematitized.	
280'	300'	20'		Cherry Creek syenite (6c) - well albitized and hematitized.	
300'				End of Hole.	



CANADIAN SUPERIOR EXPLORATION LIMITED  
DRILL LOG

Project: COMET Hole Size: Percussion Hole No.: P 78-3  
 Claim No.: DEB 6(6) 640  
 Date Started: January 27, 1978 Type Drill: Truck-mounted percussion drill Collar Elevation: 2,167.3 ft.  
 Date Completed: January 27, 1978 Contractor: H.N. Horning Percussion Drilling Ltd. Latitude: 5,200' North  
 Total Depth: 300 ft. Logged By: J.D. Blanchflower Departure: 8,600' West  
 Cased To 20 Ft. Sheet No. 1 of 1 Inclination: -90°  
 Casing Pulled: Yes  No  Chip Board Stored At: Comet Warehouse Bearing: \_\_\_\_\_

Dip and Azimuth Tests: \_\_\_\_\_

FROM	TO	THICKNESS	% RECOVERY	GEOLOGIC DESCRIPTION AND REMARKS	INTERVAL SAMPLED
0	20'	20'		Overburden.	
20'	80'	60'		Cherry Creek monzonite (6d) - well epidotized and albitized. No sulphides.	
80'	110'	30'		Mixed Cherry Creek monzonite (6d) and well hematitized Nicola volcanics (1b).	
110'	190'	80'		Nicola volcanics (1b) - intense hematitization.	
190'	300'	110'		Cherry Creek diorite (6e) - pervasively epidotized. No sulphides.	
300'				End of Hole.	

CANADIAN SUPERIOR EXPLORATION LIMITED  
DRILL LOG

Project: COMET Hole Size: Percussion Hole No.: P 78-4  
 Claim No.: DEB 2(1) 636  
 Date Started: February 4, 1978 Type Drill: Truck-mounted percussion drill Collar Elevation: 2,192.3 ft.  
 Date Completed: February 4, 1978 Contractor: H.N. Horning Percussion Drilling Ltd. Latitude: 5,000' North  
 Total Depth: 300 ft. Logged By: J.D. Blanchflower Departure: 8,400' West  
 Cased To 20 Ft. Sheet No. 1 of 1 Inclination: -90°  
 Casing Pulled: Yes  No  Chip Board Stored At: Comet Warehouse Bearing: \_\_\_\_\_

Dip and Azimuth Tests: \_\_\_\_\_

FROM	TO	THICKNESS	% RECOVERY	GEOLOGIC DESCRIPTION AND REMARKS	INTERVAL SAMPLED
0	20'	20'		Overburden.	
20'	210'	190'		Cherry Creek monzonite and monzodiorite (6 d & e) - pervasively epidotized locally albitized.	
210'	300'	90'		Cherry Creek monzonite and syenite (6 c & d) - pervasively albitized and epidotized.	
300'				End of Hole.	





CANADIAN SUPERIOR EXPLORATION LIMITED  
DRILL LOG

Project: COMET Hole Size: Percussion Hole No.: P 78-7  
 Claim No.: DEB 2(1) 636  
 Date Started: February 6, 1978 Type Drill: Truck-mounted percussion drill Collar Elevation: 2,207.6 ft.  
 Date Completed: February 6, 1978 Contractor: H.N. Horning Percussion Drilling Ltd. Latitude: 4,800' North  
 Total Depth: 280 ft. Logged By: J.D. Blanchflower Departure: 8,200' West  
 Cased To 20 Ft. Sheet No. 1 of 1 Inclination: -90°  
 Casing Pulled: Yes  No  Chip Board Stored At: Comet Warehouse Bearing: \_\_\_\_\_

Dip and Azimuth Tests: \_\_\_\_\_

FROM	TO	THICKNESS	% RECOVERY	GEOLOGIC DESCRIPTION AND REMARKS	INTERVAL SAMPLED
0	20'	20'		Overburden.	
20'	260'	240'		Cherry Creek monzonite (6d) - pervasively epidotized and locally albitized.	
				160'-190' - intensely hematitized zone.	
				220'-250' - hematitized zone with Ca fracture infilling.	
260'	280'	20'		Cherry Creek syenite (6c) - no sulphides.	
280'				Hole abandoned due to caving.	

CANADIAN SUPERIOR EXPLORATION LIMITED  
DRILL LOG

Project: COMET Hole Size: Percussion Hole No.: P 78-8  
 Claim No.: RO 11  
 Date Started: February 7, 1978 Type Drill: Truck-mounted percussion drill Collar Elevation: 2,455.2 ft.  
 Date Completed: February 7, 1978 Contractor: H.N. Horning Percussion Drilling Ltd. Latitude: 2,200' North  
 Total Depth: 300 ft. Logged By: J.D. Blanchflower Departure: 1,400' West  
 Cased To 30 Ft. Sheet No. 1 of 1 Inclination: -90°  
 Casing Pulled: Yes  No  Chip Board Stored At: Comet Warehouse Bearing: \_\_\_\_\_

Dip and Azimuth Tests: \_\_\_\_\_

FROM	TO	THICKNESS	% RECOVERY	GEOLOGIC DESCRIPTION AND REMARKS	INTERVAL SAMPLED
0	30'	30'		Overburden.	
30'	80'	50'		Cherry Creek diorite (6e) - pervasively epidotized.	
80'	100'	20'		Cherry Creek monzonite and diorite (6d & e) - epidotized and locally Kf-rich.	
100'	110'	10'		Cherry Creek diorite (6e) - pervasively epidotized.	
110'	300'	190'		Cherry Creek monzonite to syenite (6c & d) - Kf-rich, locally albitized.	
				Minor Py disseminations and fracture fillings with Al, Ep, <sup>+</sup> Cl	
				throughout ( ≤ 1%)	
				220'-300' - approximately 1% Py with minor Cp associated from 260' to 270'.	
300'				End of Hole.	







CANADIAN SUPERIOR EXPLORATION LIMITED  
DRILL LOG

Project: COMET Hole Size: Percussion Hole No.: P 78-11  
 Claim No.: CONVERDANT C.G. (L 1341)  
 Date Started: February 9, 1978 Type Drill: Truck-mounted percussion drill Collar Elevation: 2,367.6 ft.  
 Date Completed: February 11, 1978 Contractor: H.N. Horning Percussion Drilling Ltd. Latitude: 200' South  
 Total Depth: 300 ft. Logged By: J.D. Blanchflower Departure: 1,000' West  
 Cased To 110 Ft. Sheet No. 1 of 1 Inclination: -90°  
 Casing Pulled: Yes  No  Chip Board Stored At: Comet Warehouse Bearing: \_\_\_\_\_

Dip and Azimuth Tests: \_\_\_\_\_

FROM	TO	THICKNESS	% RECOVERY	GEOLOGIC DESCRIPTION AND REMARKS	INTERVAL SAMPLED
0	110'	110'		Overburden.	
110'	300'	190'		Cherry Creek monzodiorite (6d) - pervasively epidotized with minor Py disseminations throughout.	
				200'-210' - hematitized section, possible shear zone.	
				250'-300' - increase in f.g. Py disseminations and fracture-fillings to 1% of the composition.	
300'				End of Hole.	

CANADIAN SUPERIOR EXPLORATION LIMITED  
DRILL LOG

Project: COMET Hole Size: Percussion Hole No.: P 78-12  
 Claim No.: CONVERDANT C.G. (L 1341)  
 Date Started: February 12, 1978 Type Drill: Truck-mounted percussion drill Collar Elevation: 2,376.4 ft.  
 Date Completed: February 12, 1978 Contractor: H.N. Horning Percussion Drilling Ltd. Latitude: 200' South  
 Total Depth: 300 ft. Logged By: J.D. Blanchflower Departure: 1,400' West  
 Cased To 10 Ft. Sheet No. 1 of 1 Inclination: -90°  
 Casing Pulled: Yes  No  Chip Board Stored At: Comet Warehouse Bearing: \_\_\_\_\_

Dip and Azimuth Tests: \_\_\_\_\_

FROM	TO	THICKNESS	% RECOVERY	GEOLOGIC DESCRIPTION AND REMARKS	INTERVAL SAMPLED
0	10'	10'		Overburden.	
10'	300'	290'		Cherry Creek monzodiorite to monzonite (6e to d) - pervasively epidotized and locally albitized especially near Kf <sup>+</sup> Ca veining. Fine-grained Py disseminations ( $\leq 1\%$ ) throughout.	
				30' - 40' - intensely albitized and Py-rich shear zone.	
300'				End of Hole.	

CANADIAN SUPERIOR EXPLORATION LIMITED  
DRILL LOG

Project: COMET Hole Size: Percussion Hole No.: P 78-13  
 Claim No.: MAY FR. C.G. (L 1311)  
 Date Started: February 13, 1978 Type Drill: Truck-mounted percussion drill Collar Elevation: 2,388.0 ft.  
 Date Completed: February 13, 1978 Contractor: H.N. Horning Percussion Drilling Ltd. Latitude: 200' South  
 Total Depth: 300 ft. Logged By: J.D. Blanchflower Departure: 1,800' West  
 Cased To 20 Ft. Sheet No. 1 of 1 Inclination: -90°  
 Casing Pulled: Yes  No  Chip Board Stored At: Comet Warehouse Bearing: \_\_\_\_\_

Dip and Azimuth Tests: \_\_\_\_\_

FROM	TO	THICKNESS	% RECOVERY	GEOLOGIC DESCRIPTION AND REMARKS	INTERVAL SAMPLED
0	20'	20'		Overburden.	
20'	300'	280'		Cherry Creek monzonite and monzodiorite (6d & e) - pervasively epidotized and potassically feldspathized. Fine-grained Py disseminations and fracture-fillings throughout.	
				90'-110' - Py-rich section (1-3%) with minor Cp associated as f.g. disseminations and fracture-fillings.	
300'				End of Hole.	

CANADIAN SUPERIOR EXPLORATION LIMITED  
DRILL LOG

Project: COMET Hole Size: Percussion Hole No.: P 78-14  
 Claim No.: IRON CAP M.L. (L 875)  
 Date Started: February 14, 1978 Type Drill: Truck-mounted percussion drill Collar Elevation: 2,400.2 ft.  
 Date Completed: February 14, 1978 Contractor: H.N. Horning Percussion Drilling Ltd. Latitude: 200' South  
 Total Depth: 300 ft. Logged By: J.D. Blanchflower Departure: 2,200' West  
 Cased To 20 Ft. Sheet No. 1 of 1 Inclination: -90°  
 Casing Pulled: Yes  No  Chip Board Stored At: Comet Warehouse Bearing: \_\_\_\_\_

Dip and Azimuth Tests: \_\_\_\_\_

FROM	TO	THICKNESS	% RECOVERY	GEOLOGIC DESCRIPTION AND REMARKS	INTERVAL SAMPLED
0	20'	20'		Overburden.	
20'	300'	280'		Cherry Creek monzodiorite (6e) - pervasively epidotized. Local Al and/or Kf, Ep, Cl fracture-filling throughout with minor Py associated. Fine-grained Py disseminations (< 1%) increase from 230'-300'. No Cp observed.	
300'				End of Hole.	

CANADIAN SUPERIOR EXPLORATION LIMITED  
DRILL LOG

Project: COMET Hole Size: Percussion Hole No.: P 78-15  
 Claim No.: IRON CAP M.L. (L 875)  
 Date Started: February 15, 1978 Type Drill: Truck-mounted percussion drill Collar Elevation: 2,426.7 ft.  
 Date Completed: February 15, 1978 Contractor: H.N. Horning Percussion Drilling Ltd. Latitude: 200' South  
 Total Depth: 300 ft. Logged By: J.D. Blanchflower Departure: 2,600' West  
 Cased To 20 Ft. Sheet No. 1 of 1 Inclination: -90°  
 Casing Pulled: Yes  No  Chip Board Stored At: Comet Warehouse Bearing: \_\_\_\_\_

Dip and Azimuth Tests: \_\_\_\_\_

FROM	TO	THICKNESS	% RECOVERY	GEOLOGIC DESCRIPTION AND REMARKS	INTERVAL SAMPLED
0	20'	20'		Overburden.	
20'	300'	280'		Cherry Creek monzodiorite (6d) - pervasively epidotized. Very minor fine-grained Py disseminations throughout (<<1%). Minor Kf + Ca, Ep veining locally.	
300'				End of Hole.	





CANADIAN SUPERIOR EXPLORATION LIMITED  
DRILL LOG

Project: COMET Hole Size: Percussion Hole No.: P 78-18  
 Claim No.: DM 96  
 Date Started: February 17, 1978 Type Drill: Truck-mounted percussion drill Collar Elevation: 2,503.0 ft.  
 Date Completed: February 20, 1978 Contractor: H.N. Horning Percussion Drilling Ltd. Latitude: 2,000' South  
 Total Depth: 300 ft. Logged By: J.D. Blanchflower Departure: 7,200' West  
 Cased To 50 Ft. Sheet No. 1 of 1 Inclination: -90°  
 Casing Pulled: Yes  No  Chip Board Stored At: Comet Warehouse Bearing: \_\_\_\_\_

Dip and Azimuth Tests: \_\_\_\_\_

FROM	TO	THICKNESS	% RECOVERY	GEOLOGIC DESCRIPTION AND REMARKS	INTERVAL SAMPLED
0	50'	50'		Overburden.	
50'	60'	10'		Mixed Kamloops volcanics (7a) and Pothook diorite (4) - possibly overburden (?)	
60'	300'	240'		Pothook diorite (4) - moderate Ep, Cl alteration with local albitization. Trace Py. Minor Ca fracture-fillings.	
				230'-270' - possible shear zone.	
300'				End of Hole.	



CANADIAN SUPERIOR EXPLORATION LIMITED  
DRILL LOG

Project: COMET Hole Size: Percussion Hole No.: P 78-19  
 Claim No.: JAN 1  
 Date Started: February 21, 1978 Type Drill: Truck-mounted percussion drill Collar Elevation: 2,511.7 ft.  
 Date Completed: February 21, 1978 Contractor: H.N. Horning Percussion Drilling Ltd. Latitude: 2,000' North  
 Total Depth: 300 ft. Logged By: J.D. Blanchflower Departure: 6,400' West  
 Cased To 50 Ft. Sheet No. 1 of 1 Inclination: -90°  
 Casing Pulled: Yes  No  Chip Board Stored At: Comet Warehouse Bearing: \_\_\_\_\_

Dip and Azimuth Tests: \_\_\_\_\_

FROM	TO	THICKNESS	% RECOVERY	GEOLOGIC DESCRIPTION AND REMARKS	INTERVAL SAMPLED
0	50'	50'		Overburden.	
50'	300'	250'		Pothook diorite (4) - pervasive Ep, Cl alteration with local albitization. Al and/or Ca, Ep, Cl <sup>±</sup> Py fracture filling throughout. Abundant Ma. Trace Py.	
				50'-60' - intense Al, He altered section. No sulphides.	
				90'-100', 150'-160', and 270'-280' - magnetite-rich sections, possible steeply-dipping veins of magnetite.	
300'				End of Hole.	



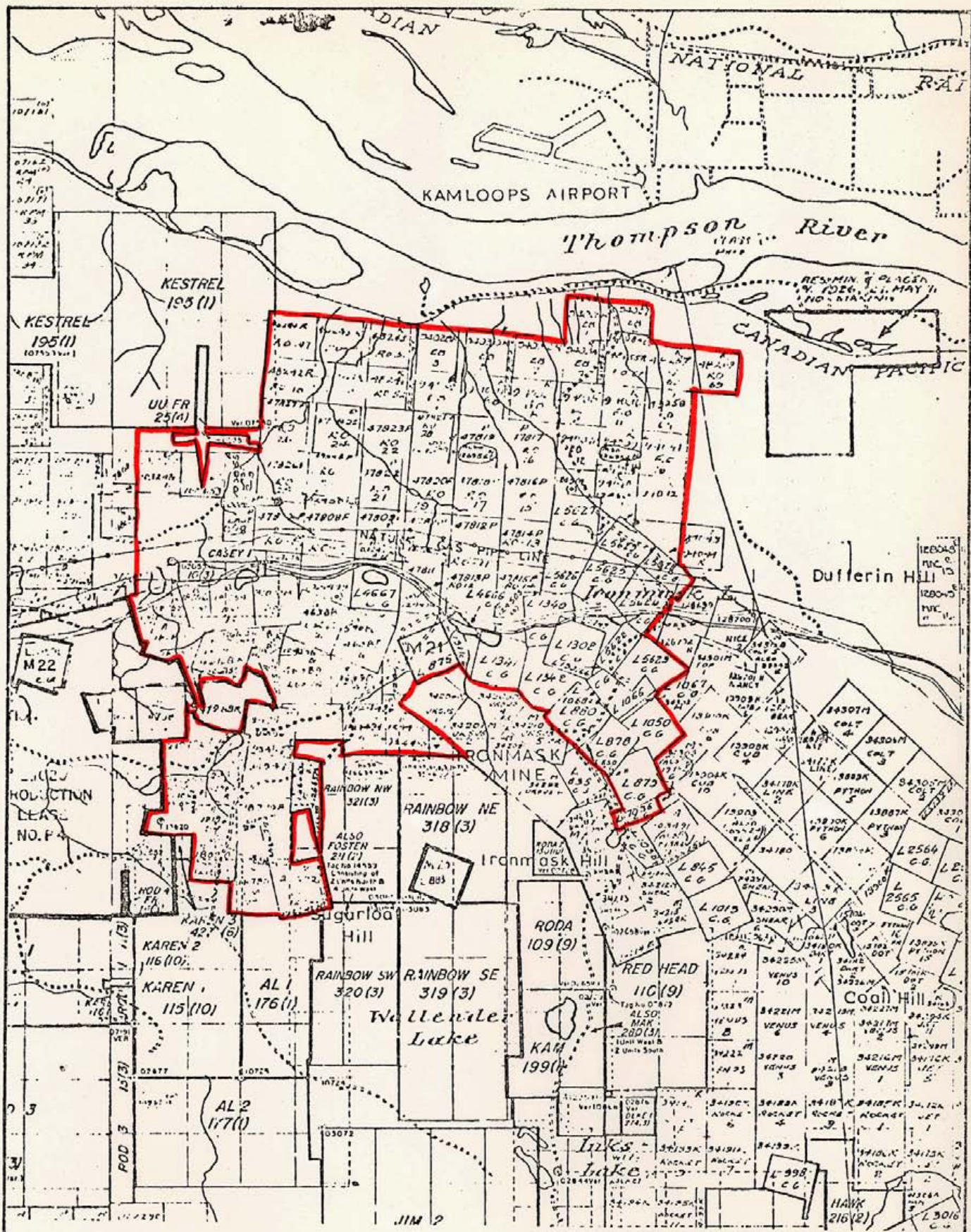
CANADIAN SUPERIOR EXPLORATION LIMITED  
DRILL LOG

Project: COMET Hole Size: Percussion Hole No.: P 78-21  
 Claim No.: MRO 2  
 Date Started: February 22, 1978 Type Drill: Truck-mounted percussion drill Collar Elevation: 2,536.0 ft.  
 Date Completed: February 23, 1978 Contractor: H.N. Horning Percussion Drilling Ltd. Latitude: 2,000' South  
 Total Depth: 300 ft. Logged By: J.D. Blanchflower Departure: 5,600' West  
 Cased To 50 Ft. Sheet No. 1 of 1 Inclination: -90°  
 Casing Pulled: Yes  No  Chip Board Stored At: Comet Warehouse Bearing: \_\_\_\_\_

Dip and Azimuth Tests: \_\_\_\_\_

FROM	TO	THICKNESS	% RECOVERY	GEOLOGIC DESCRIPTION AND REMARKS	INTERVAL SAMPLED
0	50'	50'		Overburden.	
50'	220'	170'		Iron Mask diorite (3) - pervasively chloritized with local Al and/or Gy, Ca, Ep, Cl <sup>±</sup> Py fracture fillings. Increase in Py below 100'.	
220'	230'	10'		Cherry Creek monzonite dyke (6d) - Kf-rich, pervasively albitized with minor f.g. Py disseminations.	
230'	300'	70'		Iron Mask diorite (3) - pervasively chloritized with minor Al and/or Ca, Gy, Ep, Cl <sup>±</sup> Py fracture fillings.	
300'				End of Hole.	





Scale: 1: 50,000

0 1/2 1 1 1/2 2 miles

0 1 2 3 km.

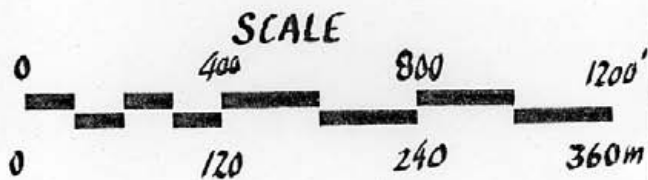
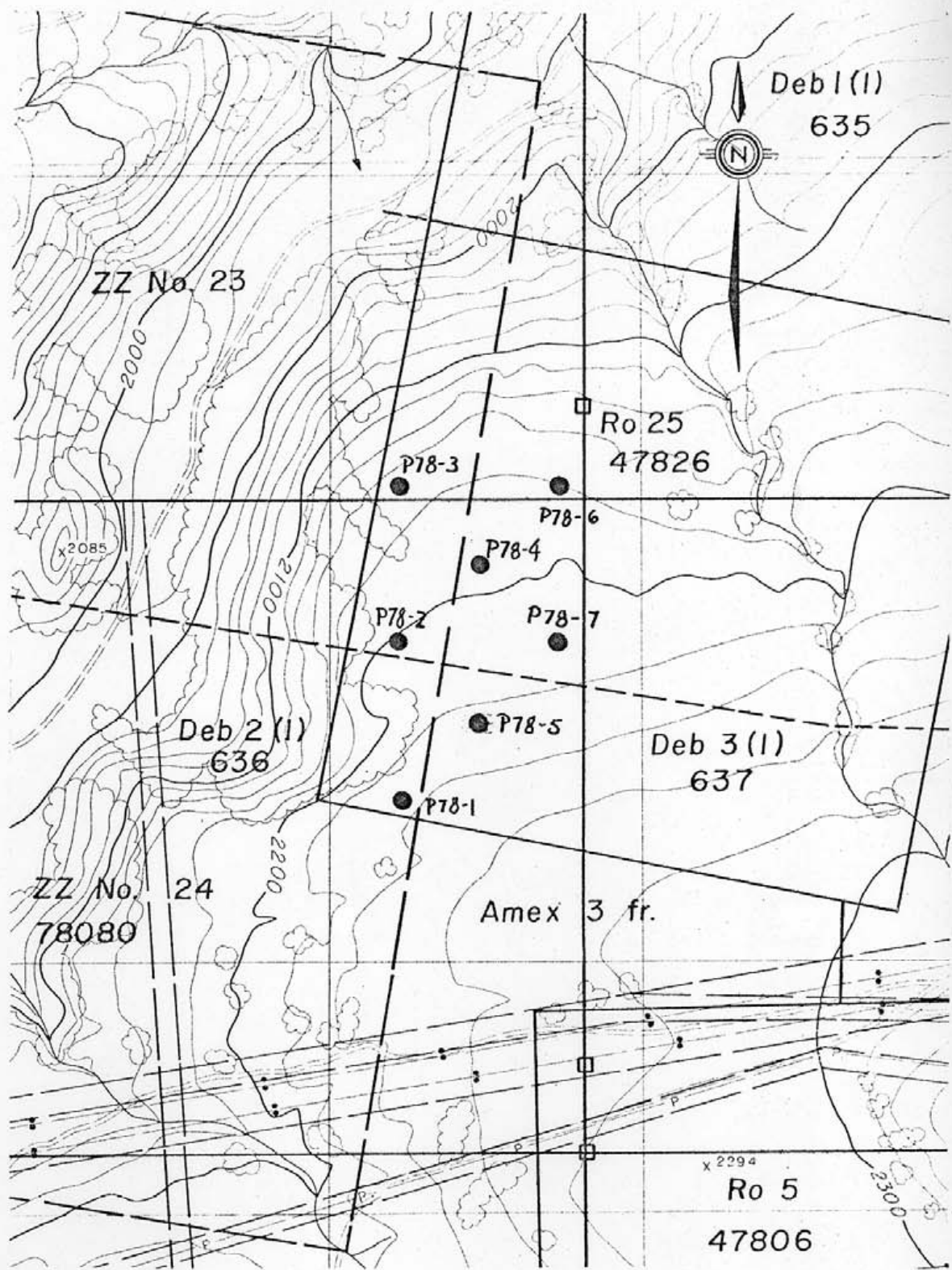
Fig 1

CANADIAN SUPERIOR EXPLORATION LIMITED

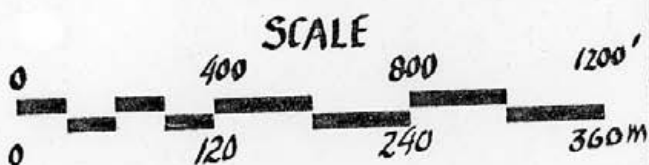
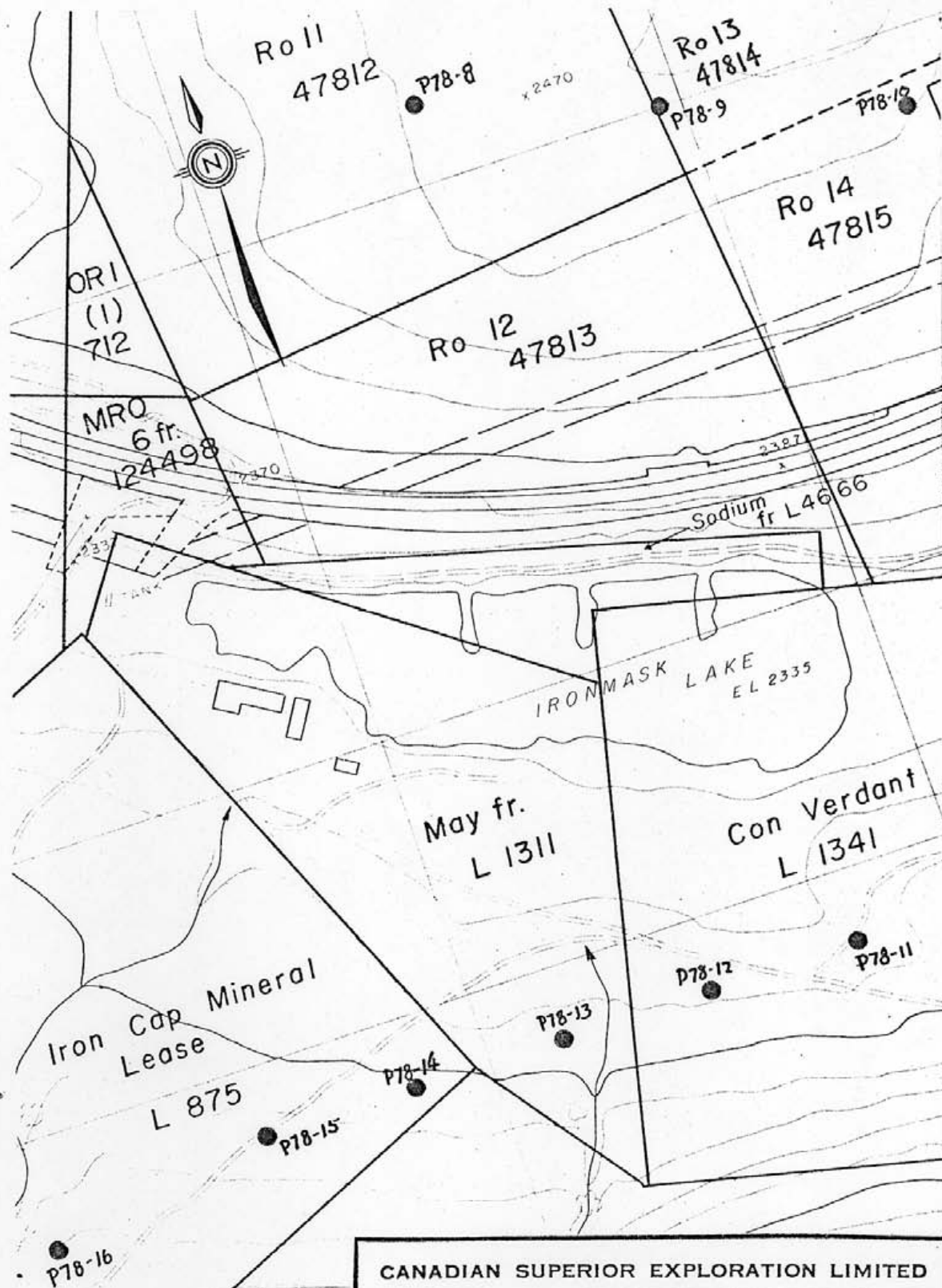
LOCATION MAP  
Comet Property  
Kamloops M.D., B.C.

DRFT: J.D.B SCALE:

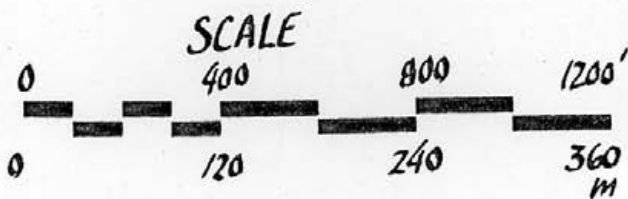
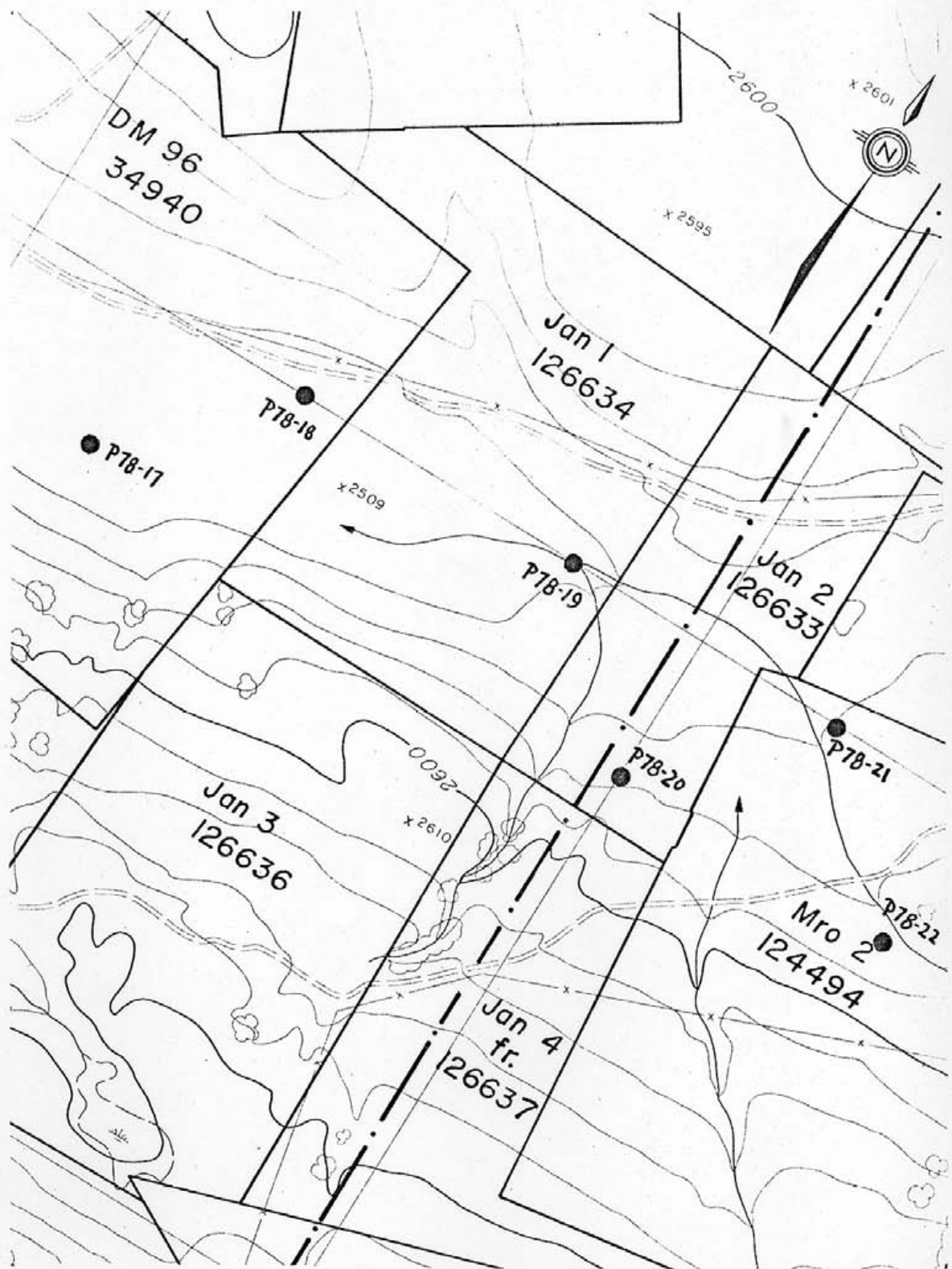
DATE: 10/11/77



CANADIAN SUPERIOR EXPLORATION LIMITED		
Comet Property		
1978 Percussion Drill Hole Plan		
Fig 3.	June 1978	DWG. J.M.



CANADIAN SUPERIOR EXPLORATION LIMITED		
<i>Comet Property</i>		
<i>1978 Percussion Drill Hole Plan</i>		
<i>Fig 2.</i>	<i>June 1978</i>	<i>DWG. J.M.</i>



CANADIAN SUPERIOR EXPLORATION LIMITED

*Comet Property*

*1978 Percussion Drill Hole Plan*

Fig 4

June 1978

DWG. J.M.



COST STATEMENT

Total Cost of 1978 drilling:

Mint Group:	\$ 8,580.00
Winty Group:	\$ 5,785.00
Erin Group:	\$ 975.00
	<u>\$15,340.00</u>

Drilling costs applied

Mint Group:	\$ 5,000.00
Winty Group:	\$ 5,600.00
Erin Group:	\$ 800.00
	<u>\$11,400.00</u>

Remainder to be credited to:

Comet Industries P.A.C. Account:

\$3,940.00

CERTIFICATE

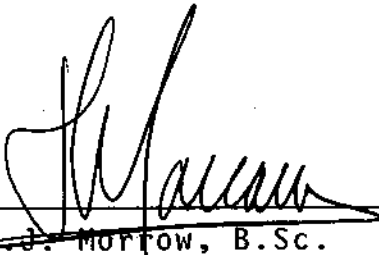
I, Jeffrey J. Morrow, of the City of Vancouver, in the Province of British Columbia, do hereby certify:

That I am a practicing geologist and am employed by Canadian Superior Exploration Limited with offices located at Suite 2201, 1177 West Hastings Street, Vancouver, British Columbia.

I further certify:

1. That I am a graduate of McGill University (1973) and hold a B.Sc. degree in geology.
2. I have been practising my profession for the past four years.
3. This report is based on information obtained by the writer from the direction of the 1978 percussion drilling program.

Vancouver, British Columbia  
June 5, 1978

  
\_\_\_\_\_  
J.J. Morrow, B.Sc.  
Geologist

MORANDUM OF AGREEMENT

Between

CANADIAN SUPERIOR EXPLORATION

#5 - 465 VICTORIA ST.

(hereinafter called "the Company")

KAMLOOPS, B.C. V2C 2A9

And

H.N. HORNING PERCUSSION DRILLING LTD.

(hereinafter called "Horning")

c/o JARRETT, GOULD & ELLIOTT

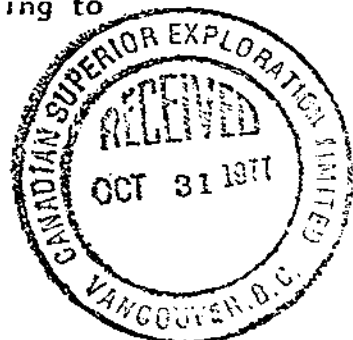
Ste. 200 - 186 Victoria Street

KAMLOOPS, B.C.

WHEREAS the Company has requested Horning to proceed to the Company's mineral property in the KAMLOOPS area of B.C. and there carry out a programme of percussion drilling totalling approximately 5,000 feet.

NOW THEREFORE IT IS AGREED AS FOLLOWS:

1. Horning will provide all the equipment, supplies, fuel and labour to carry out the said programme and will, at its expense, have these available and in good order at the drill site on a date to be stated by the Company.
2. The Company will construct all necessary access roads and drilling sites and will provide on request and without delay such transport, bulldozers, equipment, labour or assistance as may be necessary in moving the said drilling equipment to or from or on or about the drill site and will bear the cost thereof.
3. The Company will determine the location of all drill holes, the order of drilling the said holes, and the method of obtaining samples but in all other respects the drilling operations shall be carried out under the direction and control of Horning. Horning will carry out the drilling as expeditiously as possible but shall not be liable for delays due to weather, mechanical failures or other circumstances beyond its control nor shall Horning be obliged to drill at any site or move its equipment by any route which it considers unsafe for its equipment or personnel.
4. Horning will hold the Company harmless from all and any demand claims, writs, suits or causes of action arising out of the operations conducted by Horning saving always those attributable in whole or in part to the acts or omissions, negligent or otherwise, of the Company, its servants or employees. For the greater certainty of this undertaking, Horning shall maintain public liability insurance in the amount of \$500,000.00 and in a form acceptable to the Company.
5. Horning will comply with all laws of the state, province or country having jurisdiction and shall do all things necessary to prevent the mineral property of the Company being subjected to charges or liens or in any way imperilled by reason of the act, omission or default of Horning. Without restricting the generality of the foregoing it is expressly provided that Horning shall maintain registration with the Workers' Compensation Board of British Columbia and shall promptly pay all levies and assessments made by that Board.
6. Horning will maintain a daily record of the drilling operation and will furnish to the Company a copy thereof duly signed by the Company's representative at the drill site. In the report the hole identification number shall be those prescribed by the Company if any.
7. The remuneration payable by the Company to Horning shall be \$3.00 per foot drilled.
8. The Company shall reimburse Horning for additional costs according to the following Schedule "A".



SCHEDULE "A"

<u>Additional Cost</u>	<u>Reimbursement</u>
(a) Chemical grout and mud used.	AT COST
(b) Casing lost by Horning in any hole requiring over 50 feet of casing.	AT COST
(c) Time driving casing in excess of 50 feet and excessive time recovering any casing.	FIELD COST
(d) Rods lost by Horning in any hole exceeding 300 feet in depth.	AT COST
(e) Excessive time required to draw rods from any hole exceeding 300 feet in depth.	FIELD COST
(f) Waiting time (including Saturdays, Sundays and Statutory Holidays, if a designated working day).	FIELD COST
(g) On site moving time.	NIL
(h) Travelling time in excess of one (1) hour.	MAN HOURS
(i) Water supplied with water truck.	25¢ PER FOOT
(j) Mobilisation.	NIL
(k) Moving in and moving out.	NIL

For the purpose of this Agreement "waiting time" includes only time lost by Horning through delays occasioned by the Company, its servants or employees, through failure to provide instruction, permits, licences, access roads, transportation and the like when required. It is understood and agreed that item (f) in the foregoing schedule is intended to reimburse Horning for delays beyond its control and that if a normal working day is lost the reimbursement shall be the stipulated rate for each hour which would normally have been worked. (i.e. 8 hours for single shift operation and 16 hours for double shift operation).

Also for the purposes of this agreement "on site moving time" shall mean time required to move the drilling equipment on and about the company's property from camp to drill platform or landing and from one drill platform or landing to another but not including moving to or from the property itself.

Field cost is defined as the aggregate of the following:

1. Labour - per man hour \$ 7.50
  2. Equipment rental - per hour 12.00
  3. Materials used or lost on job to which field rate is applied at delivered cost to job site.
  4. Overhead at 10% of labour and rentals.
9. Horning shall render statements of account at weekly or greater intervals and the amount due to Horning as shown by the statement shall be payable seven days after presentation.

- 10. On or before arrival of Horning's equipment at the Company's property, the company as security for payment of the contract price shall deposit in trust with Horning's solicitors, N/A and accompany the deposit with a letter of instruction in the form set out in Schedule "B" appended hereto.

IN WITNESS WHEREOF the parties have caused these presents to be signed on their behalf by their respective officers at the places and on the dates stated below.

AT: Kamloops, B.C.

ON: October 18, 1977

AT: Kamloops, B.C.

ON: October 18<sup>th</sup>

*Canadian Superior Exploration Ltd.*

Per: *[Signature]*

H.N. HORNING PERCUSSION DRILLING LTD.

Per: *[Signature]*