

REPORT ON PROSPECTING

TWIN CLAIM

Skeena Division

103P/ 3E

55° 03' North 129° 02' west

Owned by R. Dunn

Operated by R. Dunn

Report by R. Dunn

19 July, 1978.

MINERAL RESOURCES BRANCH  
ASSESSMENT REPORT

6871  
NO.

TABLE OF CONTENTS

	Page
Introduction	1
Interpretation	2
Statement of cost	3
Qualifications	4
Index map	Map 1
Sample map	Map 2
Assay results	Appendix A

INTRODUCTION

The property, originally known as "Lucky", is located 75km north of Terrace, and 1 km west of Lava Lake, on the Nass River road. The main showing is associated with two small clusters of "Alice Arm" type porphyry dykes and sills with prominent gossans at about 1700' elevation on the north side of Alder creek. Due to heavy timber and steep slopes, helicopter access is restricted to one well-cut pad adjacent to the westerly showings. The claims are presently owned by R. Dunn.

The present examinations were conducted to better assess the relationship of known mineralization to geology; particularly in view of the pronounced alteration around the porphyry dykes, to look for evidence of quartz vein systems, and quartz-flooded brecciation that may indicate a larger Alice Arm type porphyry at depth.

Low level air photographs were taken from the helicopter in order to better control future detailed mapping.

INTERPRETATION

An overall general survey confirmed that the mineralized porphyry dykes were of different character, and unrelated to the coast plutonic granitic intrusion on the south side of Alder creek. The molybdenum bearing dykes are entirely enclosed within argillites and greywackes, presumably of the Bowser group, and have produced contact metamorphic aureoles which appear extensive, suggesting the proximity of larger unroofed intrusions of similar type. The prominent rusty gossans in the mineralized areas are in part due to alteration of dispersed pyrite within the dykes, and to the alteration of both pyrite and biotite generated within the dark argillites of the contact aureole.

Quartz veinlets, commonly with minor molybdenum occur in a multitude of fracture sets within both dykes and hornfels, but particularly near the contacts. More than one age of molybdenite mineralization was noted, as quartz banded gangue zones were found to cut earlier veins and dyke contacts. This feature of multistage mineralization is common to all the major porphyry type molybdenum deposits in B.C. and may have economic significance.

Map 2 attached shows location of sample points. Appendix A gives assay results of the samples.

The results of this examination, particularly the Alice Arm type intrusions, extensive alteration, multitude of quartz filled fracture sets, and multistage mineralization are sufficient to indicate an encouraging prospect and the need for detailed mapping, trenching, and eventual drilling to depth on the stronger, more highly fractured sets.

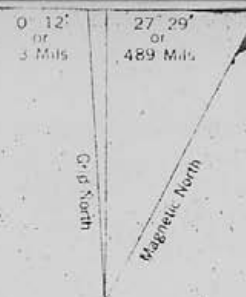
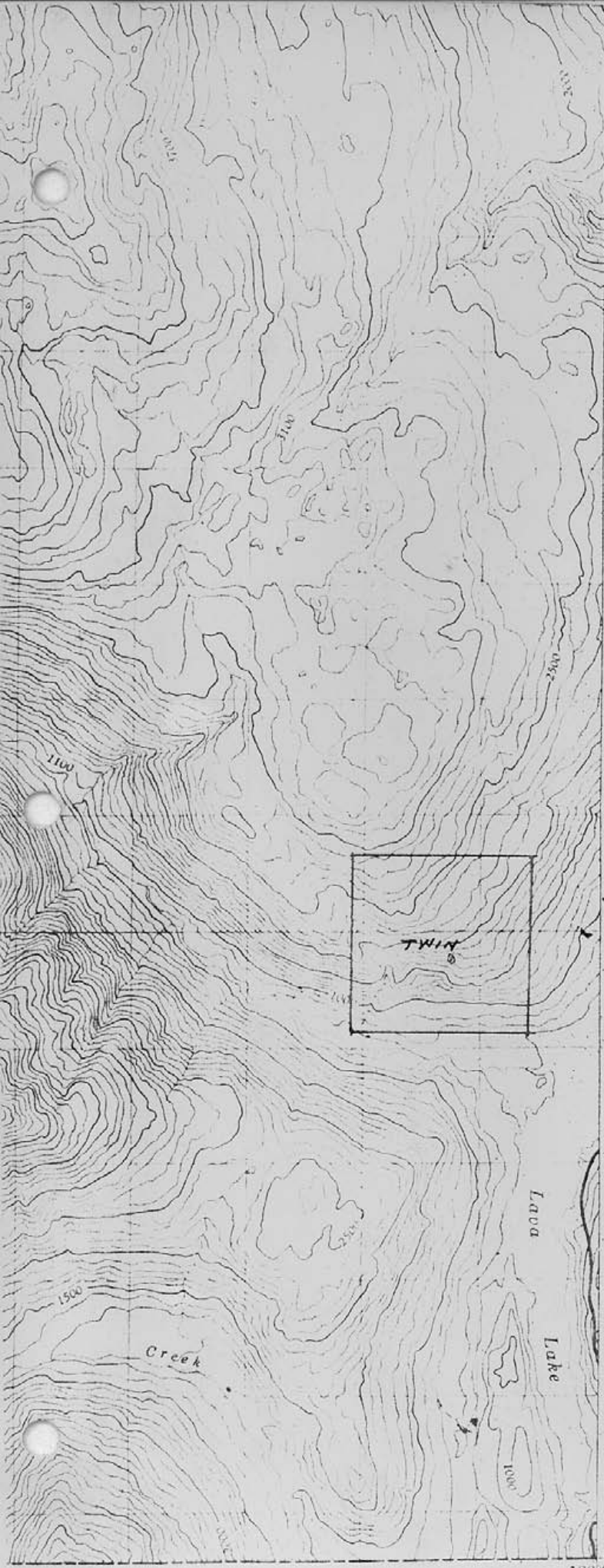
STATEMENT OF COST

A)	Wages and fees- geological consultant and prospector: 26 November, 1977	\$ 150
	7 July, 1978	150
B)	Food and Accomodation: Terrace- 26 Nov 77- 2 men	70
	7 Jul 78 1 man	35
C)	Transportation: Vancouver-Terrace Air fare Nov 77 - 2 fares	
	Jul 78 1 fare	
	\$ 450 - 20% allowed =	90
	Helicopter	
	Nov 77- 1.4 hrs	
	Jul 78 1.1 hrs \$ 872	
	50% allowed =	436
D)	Assays	30
E)	Report	40
F)	Air photos (CONTROL SURVEY) !	<u>10</u>
	TOTAL	\$ 1011

  
R. DUNN

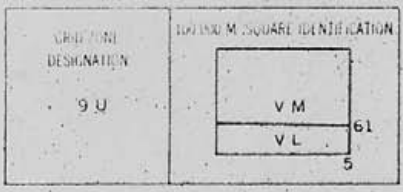
QUALIFICATIONS

The writer has been an active prospector since 1970. In addition to taking the B.C. and Yukon Chamber of Mines Prospectors School, the writer has taken courses at U.B.C. in Mineralogy, and at Montreal's Concordia University, Geology, and Structural Geology.



Use diagram only to obtain numerical values  
 APPROXIMATE MEAN DECLINATION 1966  
 FOR CENTRE OF MAP  
 Annual change decreasing 3.0'

ONE THOUSAND METRE  
 UNIVERSAL TRANSVERSE MERCATOR GRID  
 ZONE 9



EXAMPLE OF METHOD USED TO GIVE A REFERENCE TO NEAREST 100 METRES

POINT, GRID AND REFERENCE IS A SAMPLE ONLY AND DOES NOT REFER TO A POINT ON THIS MAP

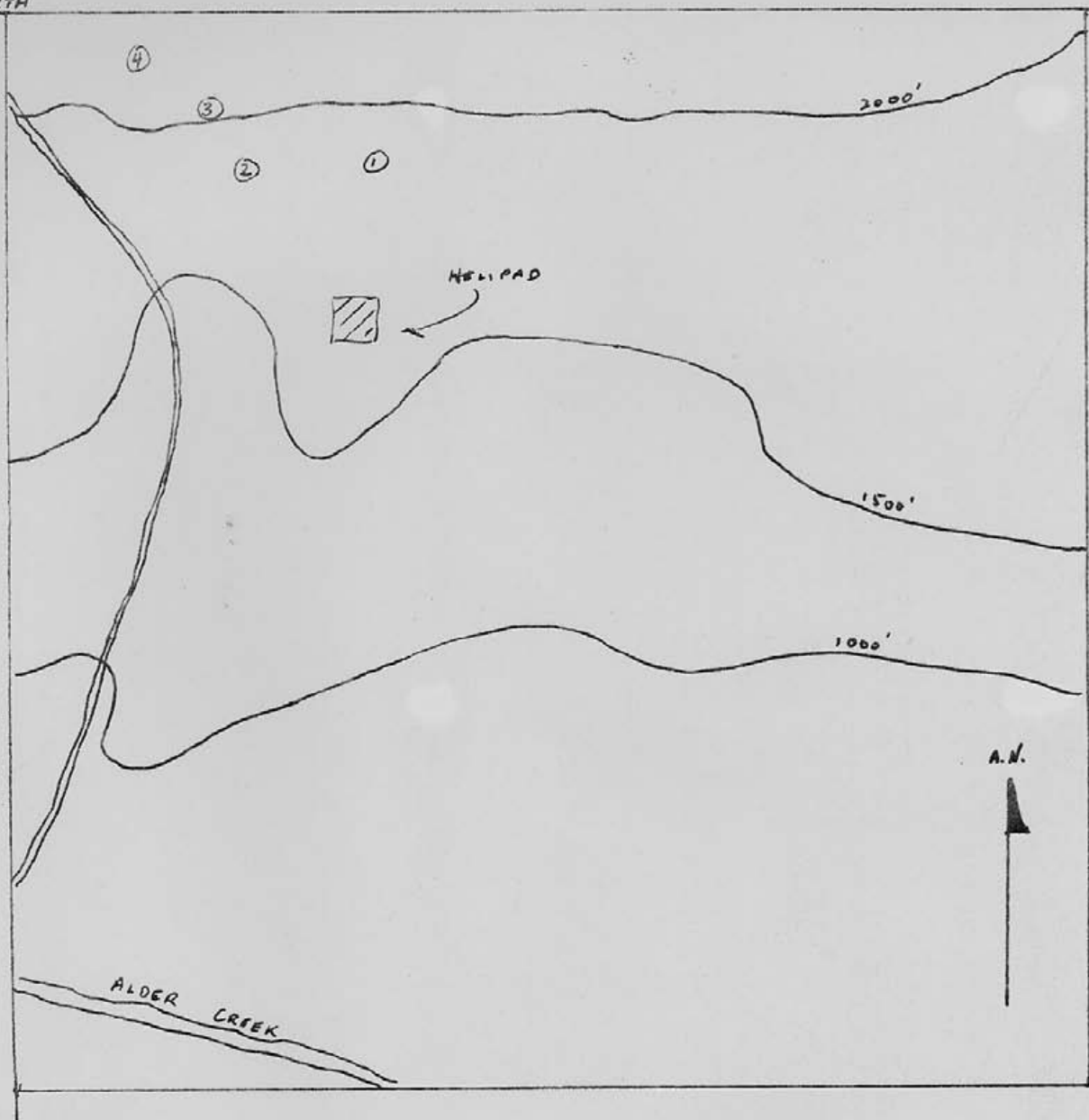
REFERENCE POINT	CHURCH (as above)
EASTING - Read number on grid line immediately to left of point	97
Estimate tenths of a square from this line eastward to point	5
	975
NORTHING - Read number of grid line immediately below point	98
Estimate tenths of a square from this line northward to point	4
	984

EXAMPLE MILITARY GRID REFERENCE 975984

Nearest similar grid reference: 100,000 metres (about 63 miles)

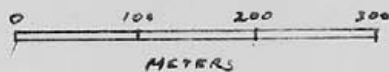
Map 1  
 Index Map  
 103 P/3

6100 N NORTH



498000 N. EAST

SCALE:



Map 2  
Sample Map



Appendix A

ASSAY RESULTS

<u>Sample</u>	<u>% MoS2</u>
1	.032
2	.001
3	.007
4	.013