

ASSESSMENT REPORT

| | |
|------------------|-------------------------|
| TYPE: | GEOCHEMICAL |
| CLAIMS: | CI-1, CCI-2 |
| MINING DIVISION: | KAMLOOPS |
| NTS LOCATION: | 82M/4W |
| LATITUDE: | 51°03' |
| LONGITUDE: | 119°45' 50" |
| OWNER: | CRAIGMONT MINES LIMITED |
| OPERATOR: | " " " |
| AUTHOR: | N. B. VOLLO, P. Eng. |
| DATE: | AUGUST 4th, 1978 |

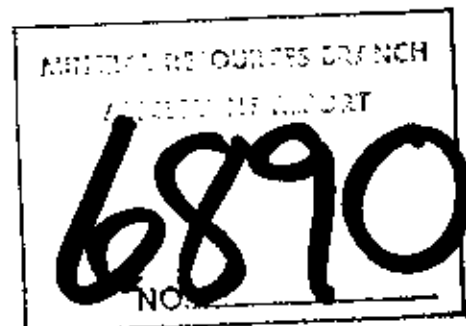


TABLE OF CONTENTS

| | |
|---------------------------------|---|
| SUMMARY | 1 |
| GENERAL | 1 |
| CLAIMS AND PROPERTY HISTORY | 1 |
| GEOLOGY | 1 |
| GEOCHEMICAL SURVEY | 1 |
| CONCLUSIONS AND RECOMMENDATIONS | 2 |
| EXPENDITURES | 2 |
| LOCATION MAP | 3 |

MAPS IN POCKET

Geochemical Plan, Total Zn, 1:5000,----- 82M/4CI2
Geochemical Plan, Total Cu-Pb, 1:5000, - 82M/4CI3

CONCLUSIONS AND RECOMMENDATIONS

The soil anomalies are probably due to low concentrations of base metals in the pyritic tuffites but should be examined in detail for the possible presence of economic bodies. Detailed mapping, trenching and drilling should be done as required.

EXPENDITURES

Personnel:

| | |
|---|--------|
| N.B. Vollo, P.Eng., supervision and report, 2 days at \$150 ----- | \$ 300 |
| L. Loranger, supervision, sample collection, Aug. 22nd to Sept. 8th, 1977, 13 days at \$100- | 1300 |
| J. Smith, chaining, sample collection, Aug. 22nd to Sept. 2nd, 10 days at \$75 ----- | 750 |
| S. Hamilton, chaining, sample collection, Aug. 22nd to 26th, 1977, 5 days at \$60 ----- | 300 |
| T. Hamilton, chaining, Aug. 22nd to 26th, 1977, 5 days at \$60 ----- | 300 |
| M. White, chaining, sample collection, July 7th, 1978, 1 day at \$75 ----- | 75 |
| E. Carlson, chaining, July 7th, 1978, 1 day at \$70 - | 70 |

subtotal 3095

Topographic Map:

Pacific Survey Corporation, Vancouver, B.C. ----- \$ 655

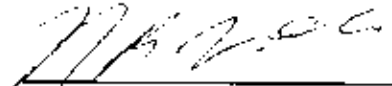
Geochemical Analysis:

Kamloops Research and Assay Laboratories, Kamloops,
B.C., 594 analysis for Cu, Pb and Zn at \$2.25 less
15% ----- 1136

Camp Expense: 35 man days at \$11/md ----- 385

Vehicle Expense: 1642 miles at 20¢/mile ----- 328

Total ----- \$5599



N.B. Vollo, P.Eng.
Aug. 4th, 1978

SUMMARY

Approximately 27 km of grid was blazed and chained and a soil geochemical survey done for Cu, Pb and Zn on the CI group, located about 25 km southeast of Barriere, B.C. The work was done to check ground and airborne EM conductors and while weak to moderate soil anomalies were obtained, they correlate poorly with EM surveys.

GENERAL

The CI group is located at the head of Cicero Creek, about 25 km southeast of Barriere. Access is via good logging roads up either Cicero or North Cicero creeks. Elevations range from about 1200 to 1500 metres above sea level. A dense second growth covers most of the property.

CLAIMS AND HISTORY

The property consists of two claims, CI-1 and CI-2, record numbers 1016 and 1017, totalling 32 units, located in the Kamloops M.D. and held by Craigmont Mines Limited. An airborne EM and magnetic survey was flown in 1976 by Craigmont locating several conductors. The writer is aware of no previous work, though claims have previously been held in the area.

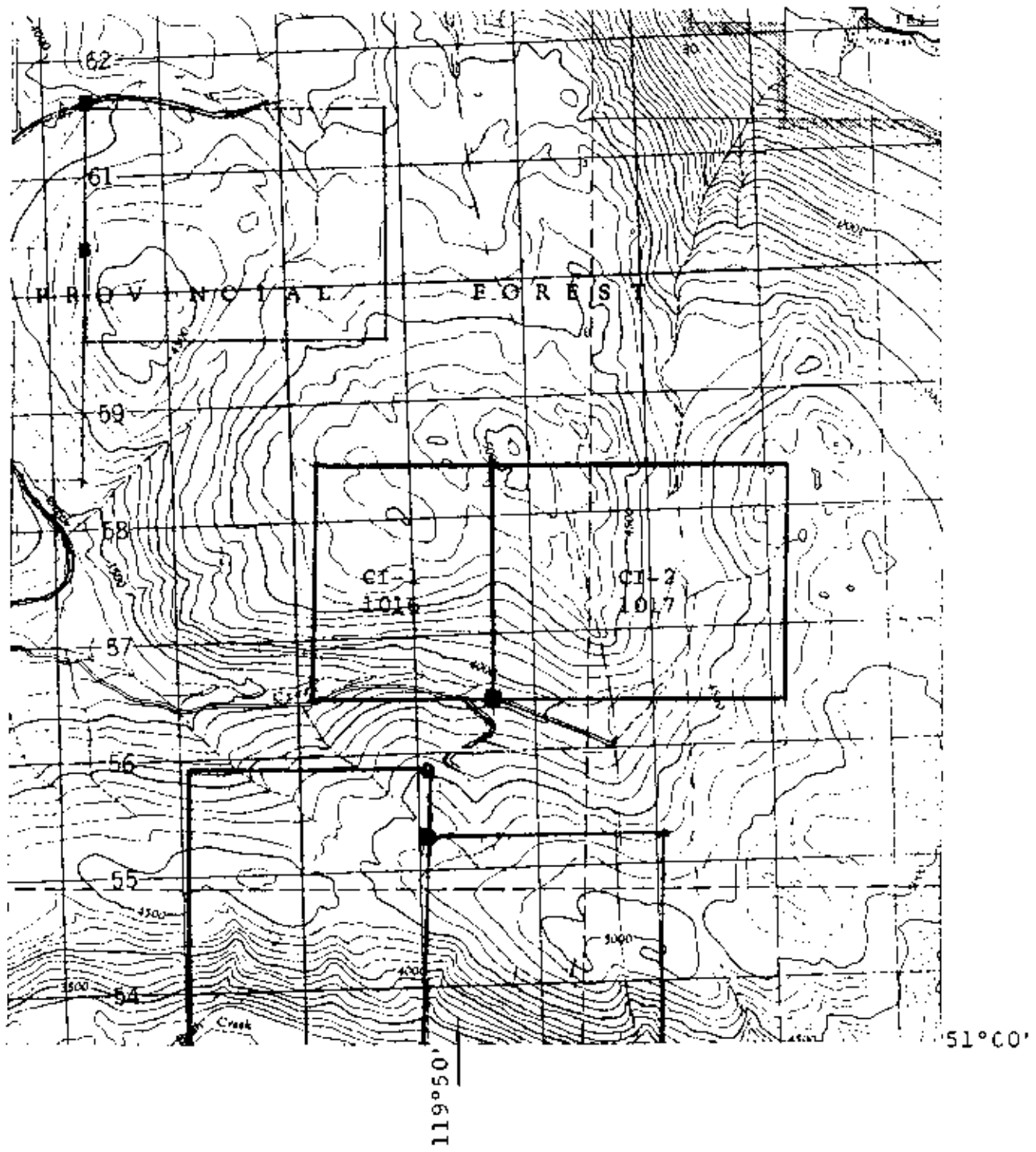
GEOLOGY

The property is underlain by acid to intermediate volcanic rocks of the Eagle Bay formation, including cherty bedded tuffites, except for a small area of graphitic shaly limestone of the Sicamous Formation in the southeast corner. Overburden is thin but outcrop is relatively sparse.

GEOCHEMICAL SURVEY

A podzol type soil profile is present, with a fairly distinctive reddish "B" horizon from which samples were taken at depths of 10 to 20 cm using pulaskis. These were placed in kraft paper envelopes and taken to Kamloops Research & Assay Laboratories where they were dried, screened and the -80 mesh fraction analyzed for Cu, Pb and Zn using 1:3 aqua regia extraction and the atomic absorption method.

Background by inspection is about 15, 25 and 50 ppm for Cu, Pb and Zn respectively and results are shown contoured at 50, 100, 200 and 400 ppm intervals on the accompanying maps (in pocket). A series of weak to moderate highs are associated with northwesterly trending pyritic tuffite beds but correlate poorly with EM conductors.



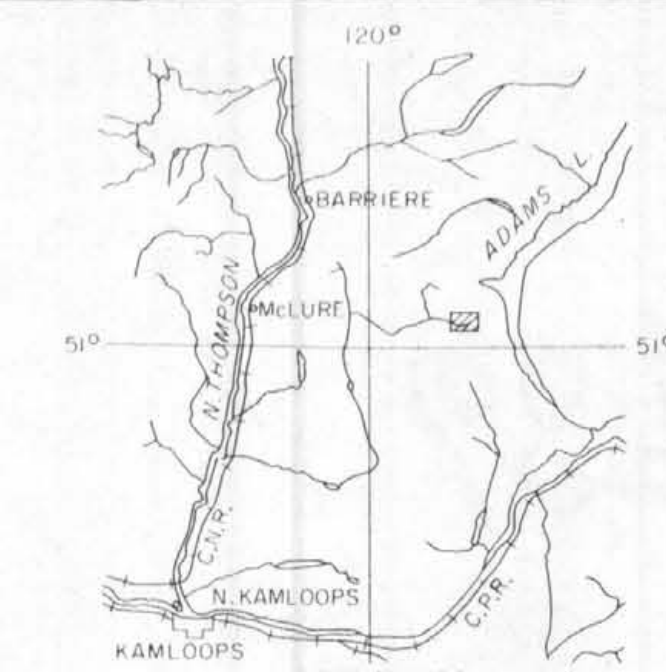
1 km

CRAIGMONT MINES LIMITED

LOCATION MAP

82M/4 CI GROUP

1:50,000



LEGEND

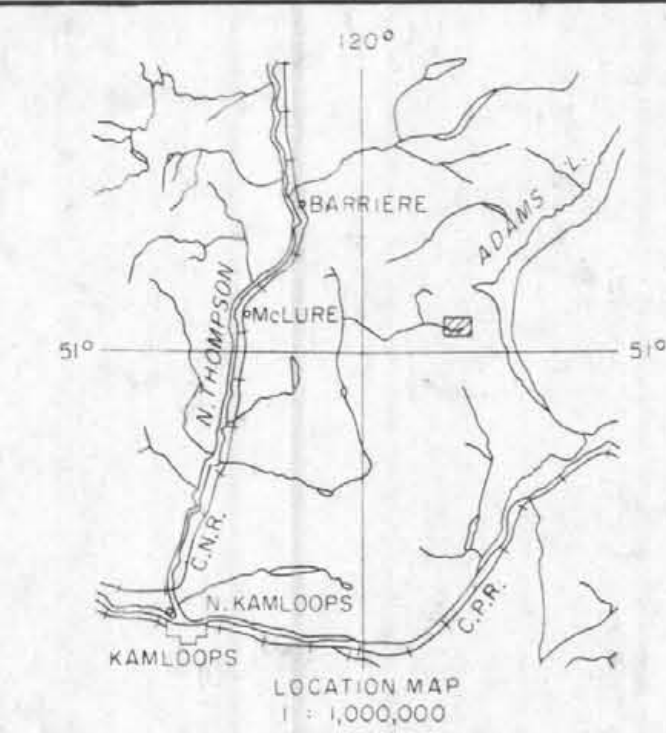
Samples from: "B" horizon
 Analysis: Atomic Absorption
 By: Kamloops Research & Assay Laboratories
 Extraction: Hot aqua regia
 Readings in ppm

- | | |
|--------------------------|------------------------|
| — Road, all weather | ■ Claim Post, known |
| — Road, four wheel drive | □ Claim Post, assumed |
| ○ Limit of timber | ○ Drill hole, drilled |
| ⊕ Open swamp, meadow | ○ Drill hole, proposed |



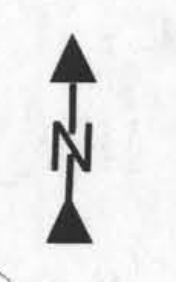
MINERAL RESOURCES BRANCH
 ASSESSMENT REPORT
6890

CRAIGMONT MINES LIMITED
 KAMLOOPS, B. C.
82M/4 CI GROUP
GEOCHEMICAL PLAN
TOTAL Zn
 Scale: 1:5,000 Date: Approved by:



LEGEND

- Samples from: "B" horizon
 Analysis: Atomic Absorption
 By: Kamloops Research & Assay Laboratory
 Extraction: Hot aqua regia
 Readings in ppm
- | | |
|--------------------------|------------------------|
| — Road, all weather | ■ Claim Post, known |
| — Road, four wheel drive | □ Claim Post, assumed |
| ○ Limit of timber | ○ Drill hole, drilled |
| ⊕ Open swamp, meadow | ○ Drill hole, proposed |



MINERAL RESOURCES BRANCH
 ASSESSMENT REPORT
6890
 NO.

CRAIGMONT MINES LIMITED
 KAMLOOPS, B. C.
82M/4 CI GROUP
GEOCHEMICAL PLAN
 TOTAL Cu Pb
 100 0 100 Metres
 Drawn by: _____ Scale: 1:5,000 Date: _____ Approved by: _____