

R E P O R T

- ON -

D I A M O N D D R I L L I N G

- ON THE -

GRIT "C" GROUP

KAMLOOPS MINING DIVISION

BRITISH COLUMBIA

- FOR -

BARRIER REEF RESOURCES LTD. (N.P.L.),

#904 - 675 WEST HASTINGS STREET,

VANCOUVER, B. C. V6B 1N2.

COVERING: GRIT #6 (6 UNITS), GRIT #7 (3 UNITS), GRIT #8
(3 UNITS), GRIT #9 (6 UNITS).

WORK PERFORMED: DECEMBER 19, 1977 TO APRIL 21, 1978.

LOCATION: (1). 51° 51' N, 120° 19' W.
(2). NTS MAP 92P/16 W.
(3). KM NW OF CLEARWATER, B. C.

PREPARED BY:

KERR, DAWSON & ASSOCIATES LTD.,

#1 - 219 VICTORIA STREET,

KAMLOOPS, B. C.

J. M. DAWSON, P. ENG.,

MAY 3, 1978.

MINERAL RESOURCES BRANCH
ASSESSMENT REPORT

6903

NO.

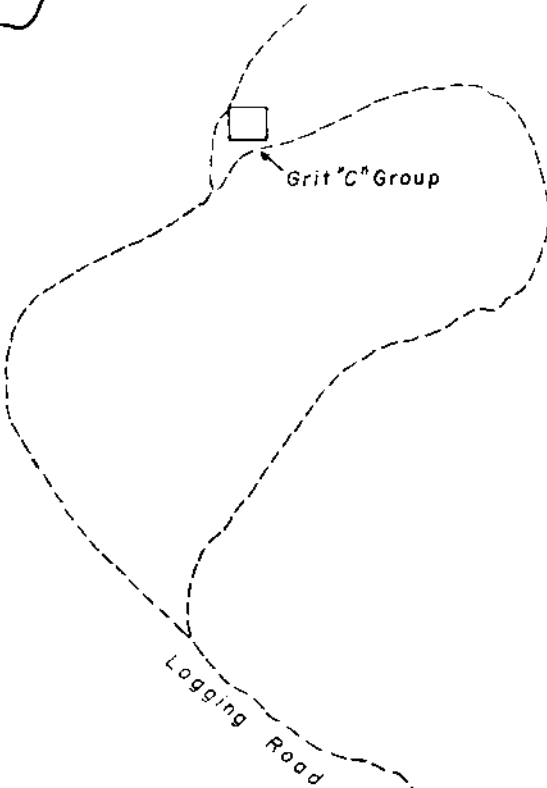
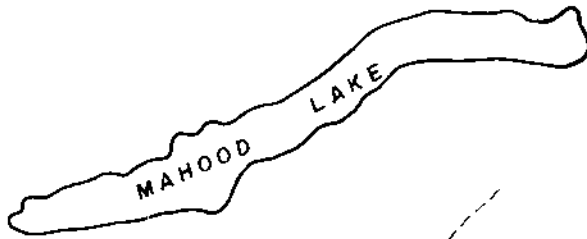
TABLE OF CONTENTS

	<u>Page No.</u>
INTRODUCTION	1
PROPERTY	2
LOCATION AND ACCESS	3
HISTORY	4
GEOLOGY	5
DRILLING PROGRAMME	6
SUMMARY AND CONCLUSIONS	7

APPENDIX A - DRILL LOGS

APPENDIX B - COSTS

APPENDIX C - WRITER'S CERTIFICATE



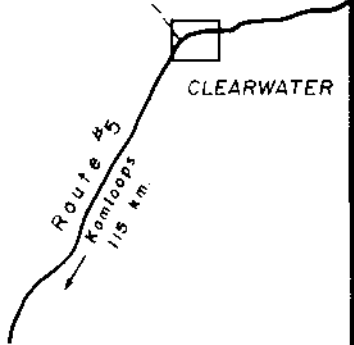
Grit "C" Group

Logging Road

WINDY
Δ MTN.



Taweal
LAKE



CLEARWATER

Route #5
Kamloops
115 km



LAC
DES
ROCHES

Barrier Reef Resources Ltd. (N.P.L.)

LOCATION MAP GRIT "C" GROUP

KAMLOOPS MINING DIVISION, B.C.

TECH. WORK BY :	SCALE :
KERR, DAWSON & ASSOC.	1 : 250,000
APPROVED BY :	DATE :
J. M. DAWSON, PENG	MAY, 1978

INTRODUCTION

This report describes a short drill programme carried out on the Grit "C" Group of claims. Field work was carried out during December and January, 1977-78.

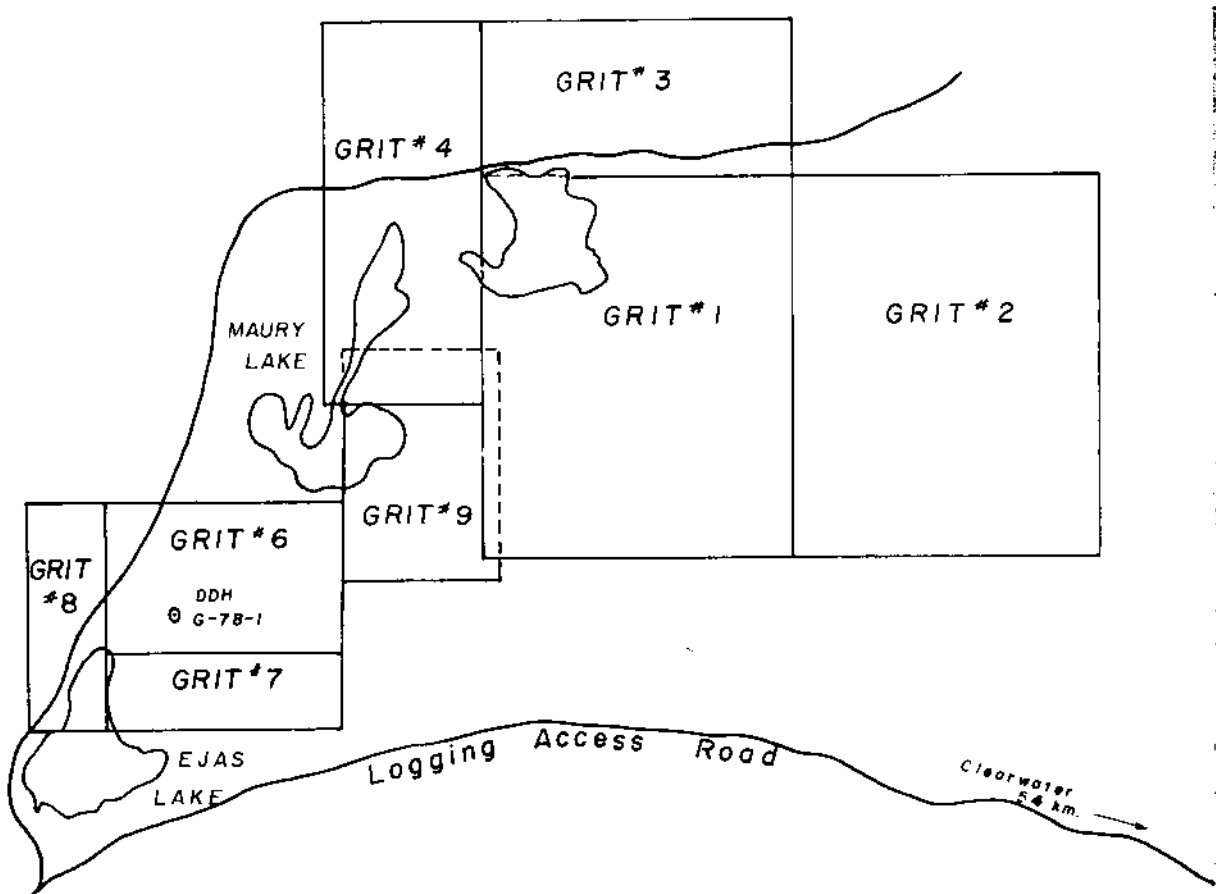
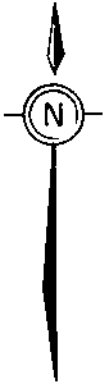
Maps showing the location and access and pertinent mineral claims are included in the text of this report.

PROPERTY

The Grit "C" Group consists of the following claims:

<u>Claim Name</u>	<u>Record No.</u>	<u>Expiry Date</u>
Grit #6	986	August 18/78
Grit #7	1060	Oct. 24/78
Grit #8	1061	Oct. 24/78
Grit #9	1116	Jan. 3/79

MAHOOD LAKE



Barrier Reef Resources Ltd. (N.P.L.)	
CLAIM MAP	
GRIT "C" GROUP	
KAMLOOPS MINING DIVISION, B.C.	
TECH. WORK BY KERR, DAWSON & ASSOC.	SCALE: 1: 50,000
APPROVED BY: J.M. DAWSON, P. ENG.	DATE: MAY, 1978.

LOCATION AND ACCESS

The property is located in south central British Columbia about 30 km. northwest of the town of Clearwater. The approximate geographic center of the claims is at $51^{\circ}51'N$, $120^{\circ}19'W$.

Access from Clearwater is gained via about 45 km. of good grade logging roads on the Clearwater Timber Products tree farm licence.

HISTORY

The Grit "C" group of claims were staked to cover a geophysical anomaly detected during the course of an airborne survey carried out in June, 1978.

No previous work is known to have been carried out on this ground.

GEOLOGY

The Grit "C" group is underlain by dark grey to black phyllite, slate and volcanic wacke of the Sicamous Formation.

Map 1278A Campbell and Tipper (1971) shows the area as being underlain by volcanic rocks of the Fennell Formation; however, recent mapping by Preto (1977) has demonstrated that the Fennell is overlain by the Sicamous in the Clearwater district and this seems to be the case in the subject area.

CURRENT PROGRAMME

An access road approximately 400 meters in length was constructed from an existing logging road near the north end of Ejas Lake. One inclined diamond drill hole was bored for 412 feet from this location.

A detailed, descriptive log of this hole is included in appendix A of this report.

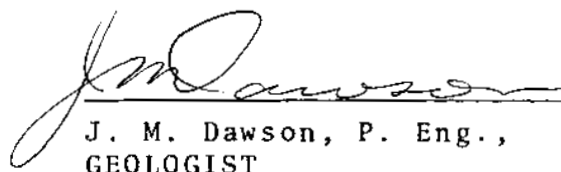
SUMMARY AND CONCLUSIONS

- (1). The Grit "C" Group consists of 4 metric claims totalling 18 units, located in the Clearwater area, southern British Columbia.
- (2). The claims were staked to cover a coincident EM and magnetic anomaly detected during an airborne survey.
- (3). The property is underlain by detrital metasediments of the Sicamous Formation.
- (4). The drilling encountered scattered areas of pyrrhotite - pyrite mineralization and some zones of graphitic phyllite.



Respectfully Submitted:

KERR, DAWSON & ASSOCIATES LTD.,


J. M. Dawson, P. Eng.,
GEOLOGIST

APPENDIX A

DRILL LOGS

KERR—DAWSON & ASSOCIATES LTD. - DIAMOND DRILL RECORD

Suite 1 - 219 Victoria St.
Kamloops, B.C.
Phone 374-0544

PROPERTY..... GRIT GROUP.....

HOLE No. G-78-1.....

DIP AND AZIMUTH TEST		
Corrected		
Footage	Angle	Azimuth

Core Size BQ.....
 Angle of Hole -45°.....
 Claim.....
 Section.....
 Bearing 018° T.....

Total Depth 412'.....
 % Recovery 94.....
 Elev. Collar.....
 Latitude 1 + 25 S.....
 Departure 0 + 80 E.....

Sheet No. 1 of 10.....
 Logged by J. M. Dawson.....
 Date Begun Jan. 4/78.....
 Date Finished Jan. 14/78.....
 Core Stored At Calgary.....

DEPTH	CORE LOST	DESCRIPTION	SAMPLE No.	WIDTH of SAMPLE					
		Overburden to 30.5 feet.							
30.5-34'	0'	30.5 to 31.5' - greenish gray, schistose andesitic tuff; foliation at 40° to core axis; 31.5-32.5' interbanded greenish gray volcanic wacke and fine grained thinly laminated, black argillite trace pyrite at end of section; 32.5 to 32.7 barren quartz vein; 32.7-33' greenish chloritic tuff or volcanic wacke; 33 to 34' barren white quartz vein.							
34-35'	0'	Interbanded greenish gray volcanic wacke and black phyllite - very lustrous on foliation planes. Foliation at 50° to core axis; scattered blebs and fracture coatings of pyrite.							
36-40'		Primarily greenish gray chloritic tuff or volcanic wacke; minor bands of fine grained black phyllite or "slumped" fragments of black phyllite; minor grains and blebs of pyrite. This section more silicified than before.							

KERR—DAWSON & ASSOCIATES LTD. - DIAMOND DRILL RECORD

Suite 1 - 219 Victoria St.
Kamloops, B.C.
Phone 374-0544

PROPERTY _____ GRIT GROUP _____

HOLE No. G-78-1

SHEET No. 2 of 10

DEPTH	CORE LOST	DESCRIPTION	SAMPLE No.	WIDTH of SAMPLE			
40-45'	3"	Primarily greenish gray, chloritic tuff or wacke; silicified in part; veins and stringers of white quartz common; scattered blebs and fracture coatings of pyrite; minor interbands of fine grained black phyllite; foliation at 30° to core axis.					
45-50'	0'	Mainly green-gray chloritic graywacke as before; minor interbands of black phyllite, minor quartz veins; scattered grains of pyrite.					
50-55'	0'	Mainly dark gray, poorly sorted siltstone and graywacke; minor bands of black phyllite; minor pyrite grains foliation and/or bedding at 60° to core axis.					
55-60'	0'	Mainly dark gray to black, thinly laminated phyllite and coarse bands of graywacke; banding at 75° to core axis; minor pyrite blebs.					
60-65'	2"	Greenish-gray chloritic graywacke with bands of fine grained dark gray to black siltstone and phyllite; minor scattered pyrite grains; banding at 70° - 80° to core axis.					
65-66'	0'	Similar to last section.					

KERR—DAWSON & ASSOCIATES LTD. - DIAMOND DRILL RECORD

Suite 1 - 219 Victoria St.
Kamloops, B.C.
Phone 374-0544

PROPERTY _____ GRIT GROUP _____ HOLE No. G-78-1 SHEET No. 3 of 10

DEPTH	CORE LOST	DESCRIPTION	SAMPLE No.	WIDTH of SAMPLE				
66-71'	0'	Interbanded green gray graywacke and fine grained black phyllite; becoming more sheared and brecciated with stretched fragments of graywacke surrounded by finer grained black phyllite or ?? graphite schist; foliation at 80° to core axis.						
71-75'	6"	Interbanded graywacke and black phyllite; sheared with elongate pieces of graywacke enveloped by black phyllite; foliation at 85-90° to core axis.						
75-80'	0'	Schistose, green gray graywacke and black phyllite or graphitic schist; sheared as in previous section, scattered blebs and grains of pyrite; schistosity at 80 - 85° to core axis.						
80-85'	0'	Mainly, thinly interbedded siltstone, graywacke and phyllite; thin conformable quartz stringers common; beds are commonly schistose and wavy - thickening at places indicating some flowage; brecciation common.						
85-90'	0'	Similar to last section; schistosity at 85° to core axis.						
90-95'	2"	Fine grained black graphitic (?) schist with						

KERR—DAWSON & ASSOCIATES LTD. - DIAMOND DRILL RECORD

Suite 1 - 219 Victoria St.
Kamloops, B.C.
Phone 374-0544

PROPERTY _____ GRIT GROUP _____ HOLE No. G-78-1 SHEET No. 4 of 10

DEPTH	CORE LOST	DESCRIPTION	SAMPLE No.	WIDTH of SAMPLE					
90-95'		irregular streaks and lenses of whitish quartzose material; scattered lenses of pyrite and pyrrhotite; a few conformable beds (up to 1 cm. thick) of highly pyritic material; schistosity at 70° to core axis.							
95-100'	0'	Similar to last section - some isoclinal folding of the whitish quartzose zones; sulphides are primarily pyrrhotite as isolated stringers and blebs.							
100-102.5'	6"	Similar to last section.							
102.5-111'	0'	Primarily black graphitic phyllite or schist with 30-40° whitish layers and lenses of quartzose material; sulphides, primarily pyrrhotite as grains and streaks are primarily associated with the quartzose lenses; estimate 5 - 7% pyrrhotite in section; foliation at 75 - 85° to core axis.							
111-121'	11"	Similar to last section; quartzose bands are brecciated and highly deformed in many cases, less sulphides - 1-2%.							
121-124.5'	6"	Similar to last section, some zones of 5 - 10% sulphides - very fine grained - primarily in quartzose bands and primarily pyrrhotite.							

KERR—DAWSON & ASSOCIATES LTD. - DIAMOND DRILL RECORD

Suite 1 - 219 Victoria St.
Kamloops, B.C.
Phone 374-0544

PROPERTY _____ GRIT GROUP _____

HOLE No. G-78-1

SHEET No. 5 of 10

DEPTH	CORE LOST	DESCRIPTION	SAMPLE No.	WIDTH of SAMPLE					
124.5-127'	2"	Primarily black, graphitic phyllite with bands and irregular stringers of whitish quartzose material; minor sulphides.							
127-128'	0'	Similar to last section; schistosity at 75° to core axis.							
128-131.5'	0'	Similar to last section - quartzose lenses now about 60% of total volume; scattered pyrrhotite in some of these lenses and fragments.							
131.5-141.5'	0'	Similar to last section; quartzose bands are highly brecciated and isoclinally folded - comprise about 35 - 40% of total section; minor pyrrhotite.							
141.5-147'	3"	Black graphitic phyllite with minor quartzose lenses - minor pyrrhotite as finely disseminated grains in quartzose lenses.							
147-151'	0'	Similar material with scattered coarse blebs of pyrrhotite.							
151-161'	0'	Black graphitic slate with 40% lenses and irregular fragments of whitish quartzose material; some conformable bands rich in fine grained							

KERR-DAWSON & ASSOCIATES LTD. - DIAMOND DRILL RECORD

Suite 1 - 219 Victoria St.
Kamloops, B.C.
Phone 374-0544

PROPERTY _____ GRIT GROUP _____

HOLE No. G-78-1

SHEET No. 10 of 10

DEPTH	CORE LOST	DESCRIPTION	SAMPLE No.	WIDTH of SAMPLE					
348-367'	0'	Mostly grayish medium grained graywacke with thin bands of dark, gray argillite - typical turbidite sequence; bedding at 70° to core axis; scatteree blebs of pyrrhotite.							
367-378'	0'	To 369.5' - similar to last section; 369.5-372.5' - barren white quartz vein. 372.5-378' - interlayed thin bands of dark gray argillite and dirty quartzite; scattered blebs of pyrrhotite.							
378-384'	6"	Similar to last section; a 1 foot barren quartz vein from 378.5' to 379.5'.							
384-396.5'	0'	Graphitic argillite and graywacke grading in places to the phyllite with more distinct gray-white thin quartzose lenses; scattered blebs of pyrrhotite; foliation at 75° to core axis.							
396.5-406.5'	0'	Similar to last section.							
406.5-412'	0'	Similar to last sections; several minor quartz veins.							
		END OF HOLE.							

APPENDIX B

PROGRAMME COSTS

AQUITAINE COMPANY OF CANADA LTD.

2000 AQUITAINE TOWER 540 - 5th AVENUE S.W.
PHONE: 267-9111 AREA CODE 403 TELEEX 038-22649 PETRAKALCOY CABLES. PETRAKALCOY
CALGARY, ALBERTA, CANADA
T2P 0M4

April 19, 1978

Mr. J. Dawson
Kerr, Dawson & Associates Ltd.
219 Victoria Street
Kamloops, B.C.

Dear Jim:

Enclosed are 2 copies each of invoices related to the Grit drilling. They include:

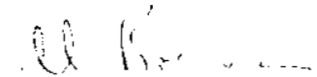
Construction of Road	\$ 2,123.10
Wright Drilling	8,161.33
Supervision of Drilling, etc.	5,094.10
Shipping Core to Calgary	38.93
	<hr/>
TOTAL	\$15,417.46

We are not intending to submit the ground geophysical work as the assessment credit value is negligible.

If you need more information for submitting the drilling costs for credit please contact me.

Very truly yours,

AQUITAINE COMPANY OF CANADA LTD.



A. E. Boerner

AEB/knd

Enclosure

QUICK PAY CHEQUE REQUISITION

RETURN CHEQUE TO Joyce Davis 238

DATE Feb. 8 19 76

DATE CHEQUE REQUIRED ASAP

DOLLARS	CENTS
2,123	10

PAYABLE TO Kerr, Dawson and Associates Ltd.
1-219 Victoria Street
Kamloops, B.C.

AMOUNT 2,123 10
 FUNDS CAN. U.S.A.
 OTHER

EXPLANATION As payment for your invoice dated Dec. 30, 1977

CHEQUE NO.

CHARGE 117-7

REQUISITIONED BY

DEPARTMENT APPROVAL
see attached

TREASURY APPROVAL

N. Ashmead

ACCOUNTING DISTRIBUTION SUMMARY

LINE CODE	COM CODE	ACCOUNT	SUBSIDIARY LEDGER	SUB. FEATURE	A.P.E.	COST CENTRE	FROM	CAPITAL BUDGET	PROJECT	VOLUME	DEBIT	CREDIT
	5	10		542	117-7						2,123	10

LINE CODE	COM CODE	ACCOUNT	SUBSIDIARY LEDGER	IDENTIFICATION	MO.	DAY YEAR	NAME CODE	INVOICE NO.	DEBIT	CREDIT
	5	72								
		72								
		72								
		72								
		72								
		72								
		72								

PREPARED BY N. Ashmead CODING APPROVAL _____
 CHECKED BY _____

VOUCHER CODE
 MONTH NUMBER
COPY

KERR, DAWSON & ASSOCIATES LTD.

1 - 219 VICTORIA STREET, KAMLOOPS, B.C.
TELEPHONE 374-0544

INVOICE No. _____

INVOICE TO: Aquitaine Co. of Canada Ltd.,
2000 Aquitaine Tower,
540 Fifth Avenue S. W.,
CALGARY, Alberta. T2P 0M4.

PROJ. No. 160

DATE Dec. 30/77

FOR: Professional Services Rendered re Construction of Drill
Site Access Road Grit Claim Group

(1). Labour:

J. M. Dawson
2 1/2 days @ \$200.00/day \$ 500.00

(2). Expenses and Disbursements:

(a). Invoice from Bainbridge Clearing and Dozing	\$1,307.00	
+ 10% handling charge	<u>130.70</u>	\$1,437.70
(b). Truck Rental		
2 days @ \$20/day	\$ 40.00	
530 miles @ 20¢/mile	<u>106.00</u>	146.00
(c). Telephone, xerox, meals, etc.		<u>39.40</u>

1,623.10

Rec - FEB 9/78

AQUITAINE COMPANY OF CANADA LTD. JAN 5 1978 SUPPORTING DATA VERIFIED PRICES/RATES VERIFIED CODED 113-7 APPROVED FOR PAYMENT <i>[Signature]</i>

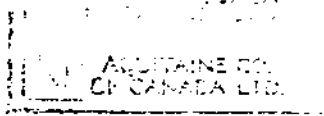
TOTAL HEREIN

\$2,113.10

V4E 1A6

INVOICE NO. 190

SOLD TO



SHIPPED TO

AQUITANE COMPANY OF CANADA
2500 AQUITANE TOWER
570 5th AVE S.W.
CALGARY, ALBERTA.

CLEARWATER
BRITISH COLUMBIA

DATE	ORDER NO.	SALESMAN	TERMS	SHIPPED VIA	PPD	COLL.
3 FEB 78						
DIAMOND DRILLING JAN 3-15, 1978						\$ 8,161.50
477						
A. Brenner Sr. A. Meunier Mar 2 / 78						
Quick Pay						
TOTAL						\$ 8,161.50



MOBILIZATION + DEMOBILIZATION

\$600.00

SETTING UP AND DRILL HOLE

21 MAN HRS @ \$17.00

\$357.00

DRILLING HOLE G T1-1

CASING 0 - 25' - 25' @ \$10.75' - \$268.75

25' - 35' - 10 @ 11.75' - 117.50

CORING 35' - 412' - 377' @ 10.75' - \$4,052.75

\$4,439.00

REAMING

1 MACHINE HR. @ \$37.00

37.00

TRUCKING WATER

18.5 MACH. HRS @ 37.00 - 684.50

X 60%

\$410.70

FISHING FOR CASING

5.5 MACHINE HRS @ \$37.00

203.50

CORE BOXES

INV # 2296

\$93.09

FREIGHT FRO # 47236

13.25

106.94

PLUS 10%

10.69

TRAVEL TIME

45 MACHINE HRS @ \$37.00

\$1665.00

TEARING DOWN TO MOVE OUT

19.5 MAN HRS @ \$17.00

331.50

\$8,161.33

V

QUICK PAY CHEQUE REQUISITION

AQUITAINE
COMPANY OF CANADA LTD

RETURN CHEQUE TO Joyce Davis 238 DATE February 18 1978

DATE CHEQUE REQUIRED ASAP

DOLLARS	CENTS
5,094	10

PAYABLE TO Kerr, Dawson & Associates Ltd. AMOUNT

1, 219 Victoria Street
Kamloops, British Columbia

FUNDS CAN. U.S.A. OTHER

CHEQUE NO.

EXPIRATION as payment for your Invoice No. 318 dated January 20, 1978

CHARGE 117-7

REQUISITIONED BY

DEPARTMENT APPROVAL

TREASURY APPROVAL

see attached

IRVING N. Ashmead

ACCOUNTING DISTRIBUTION SUMMARY

LINE CODE	CON CODE	ACCOUNT	SUBSIDIARY LEDGER	SUB-FEATURE	A. P. RES.	COST CENTRE	PROV.	CAPITAL BUDGET	PROJECT	VOLUME	DEBIT	CREDIT
	5	10		316	717-7						5094 10	

LINE CODE	CON CODE	ACCOUNT	SUBSIDIARY LEDGER	IDENTIFICATION	MO.	DAY YEAR	NAME CODE	INVOICE NO.	DEBIT	CREDIT
	5	72								
		72								
		72								
		72								
		72								
		72								
		72								

PREPARED BY *[Signature]* CODING APPROVAL _____
CHECKED BY _____

VOUCHER CODE
MONTH _____ NUMBER _____
5094 10
OPY

KERR, DAWSON & ASSOCIATES LTD.

1 - 219 VICTORIA STREET, KAMLOOPS, B.C.
TELEPHONE 374-0544

INVOICE No. 318

INVOICE TO: Aquitaine Company of Canada Ltd.,
2000 Aquitaine Tower,
540 - 5th. Avenue S. W.,
CALGARY, Alberta, T2P 0M4.

PROJ. No. #160
DATE Jan. 20/78

FOR: Professional Services Rendered re Supervision of
Drilling on Grit claims and Recording of Assessment
Work on same.

(1). Labour:

J. M. Dawson, P. Eng.,
12 days @ \$200.00/day \$2,400.00

(2). Expenses and Disbursements:

(a). Truck Rental
12 days @ \$20.00/day \$240.00
1,140 miles @ 20¢/mile 220.00 . . . \$468.00 ✓

(b). Room and Board 306.00

(c). Telephone 62.40

(d). Road Plowing and Clearing
Rental of tree skidder from Clearwater
Timber \$168.50
Cat from Bainbridge
Dozing 438.50

10% Handling Fee \$607.00 667.70

Recording Fees (Assessment) 1,190.00 2,694.10

TOTAL HEREIN \$5,094.10

AQUITAINE
COMPANY OF CANADA LTD.
SUPPORTING DATA
E-111-1
[Signature]

RECEIVED
JAN 23 1978
KERR, DAWSON & ASSOCIATES LTD.

MOTORWAYS

CHAPMAN - CARSON

ACCOUNTING OFFICES P.O. BOX 738 WINNIPEG, MANITOBA R3C 2L9

ACCOUNT NO.

PRO 122-003362-2

CONSIGNEE				SHIPPER			
AQUITAINE CO OF CANADA 2000 AQUITAINE TOWER, 540-3TH AVE SW CALGARY, ALTA				KERR-DAWSON & ASSOC LTD KAMLOOPS, B.C.			
CONNECTING CARRIER AND PRO NUMBER				BILLER ST		TRAILER NO. 973259	
SHIPPER NO'S		ACQUITA DEST CCOMPL OF C 20870	WEIGHT 640	RECEIV. AMOUNT 38.98	MOTORWAYS 38.98	INTERLINE	COLL/PPD. COLL
NO. PCS	DESCRIPTION AND MARKS	WEIGHT		RATE		CHARGES	
16	BOXES	640		6.99		38.98	
5		CONSIGNEE'S COPY				38.98	

PAID CASH
*Delivered to A. M...
 51 E 3rd Ave 117-7 "CST"*
 POSTED

APPENDIX C

WRITER'S CERTIFICATE

JAMES M. DAWSON, P. ENG.
GEOLOGIST

SUITE 1 219 VICTORIA STREET
KAMLOOPS, B.C.
PHONE (604) 374-6427

CERTIFICATE

I, JAMES M. DAWSON, of Kamloops, British Columbia, DO HEREBY
CERTIFY THAT:

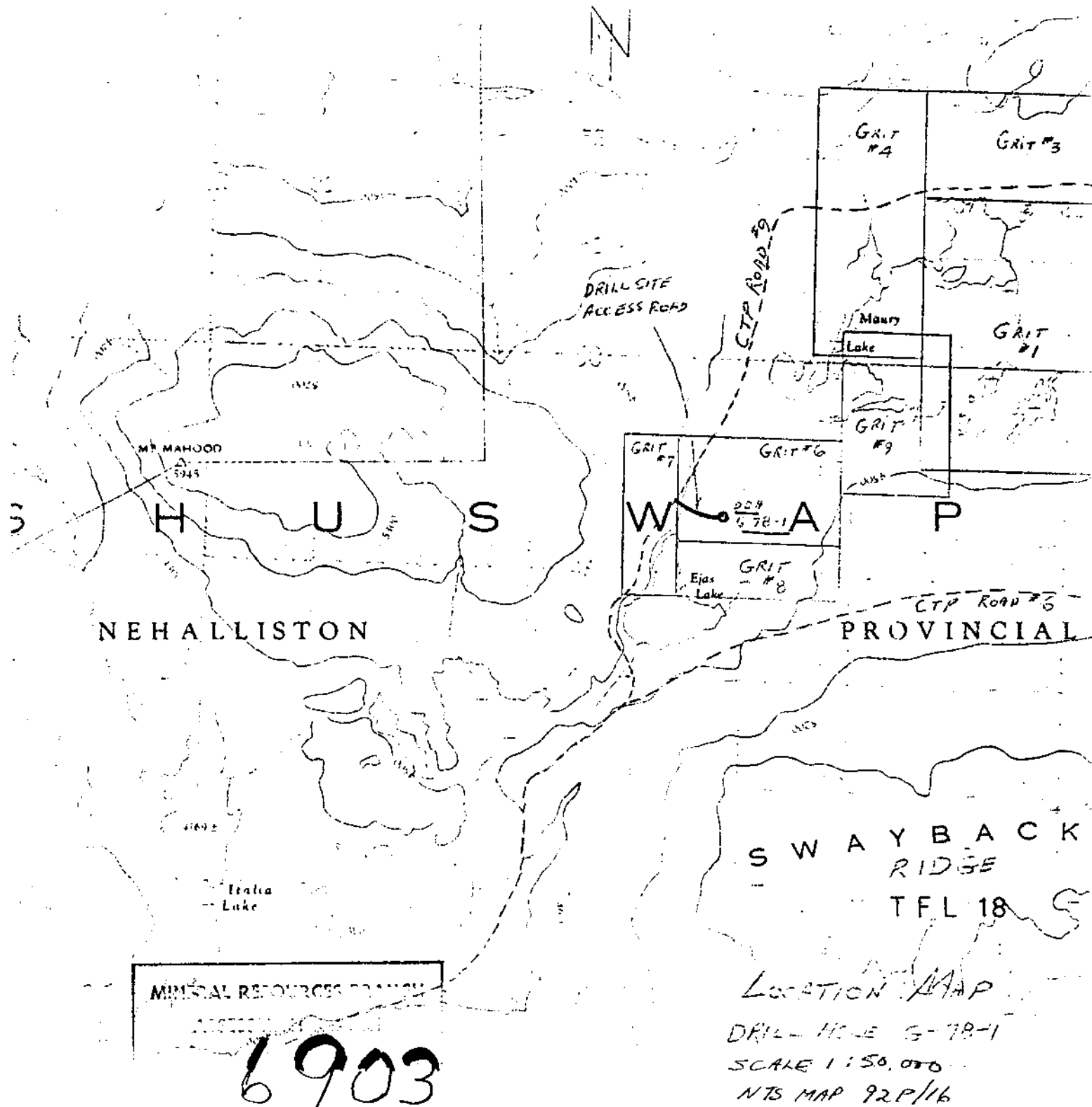
- (1).- I am a geologist employed by Kerr, Dawson and Associates Ltd. of Suite #1 - 219 Victoria Street, Kamloops, B. C.
- (2). I am a graduate of the Memorial University of Newfoundland, B. Sc. (1960), M. Sc. (1963), a fellow of the Geological Association of Canada and a member of the Association of Professional Engineers of B. C. I have practised my profession for 14 years.
- (3). I am the author of this report which is based on a drilling programme supervised by myself.

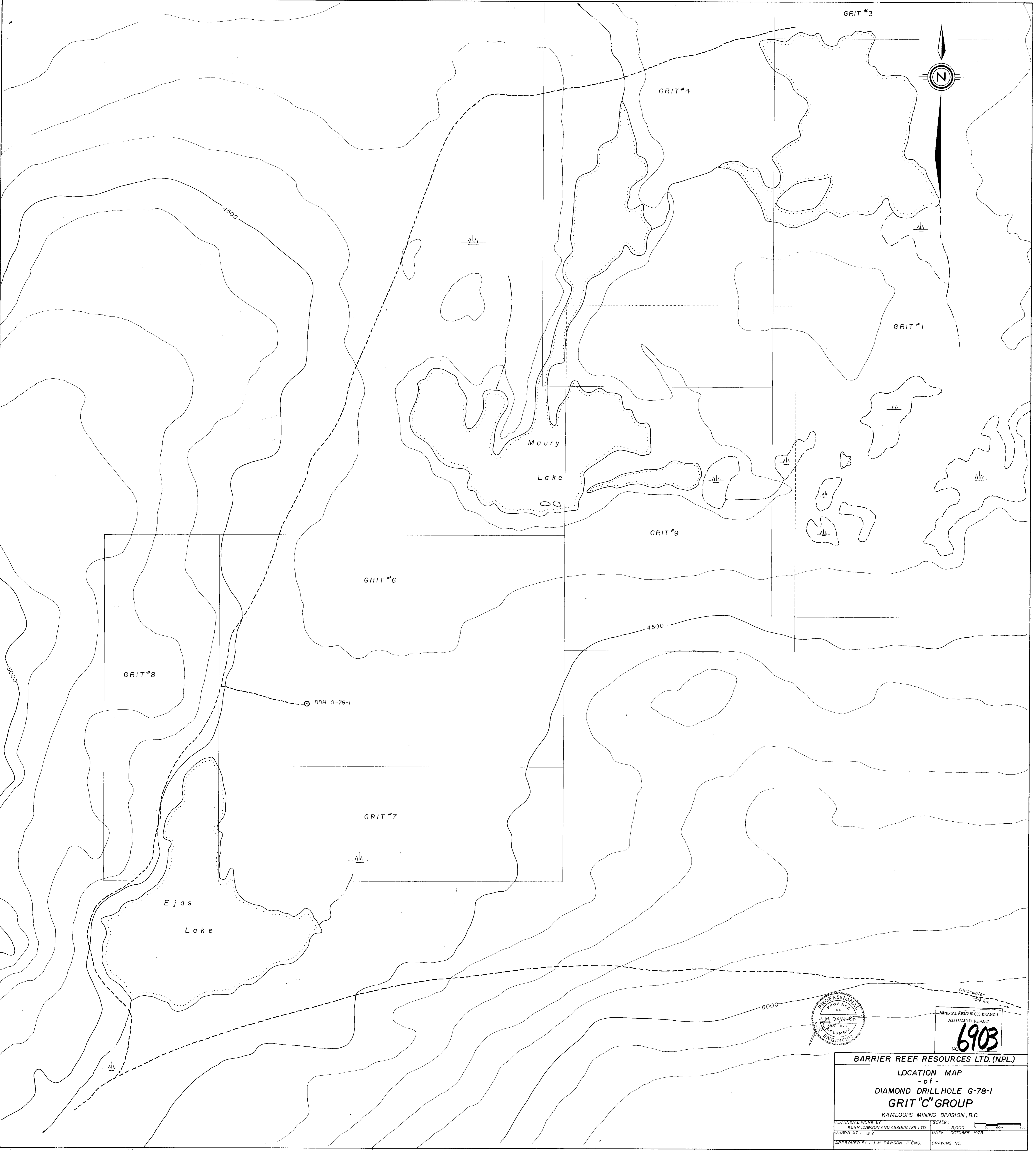


KERR, DAWSON AND ASSOCIATES LTD.,

James M. Dawson
James M. Dawson, M. Sc. P. Eng.,
GEOLOGIST

May 3, 1978,
KAMLOOPS, B. C.





GRIT #3



GRIT #4

GRIT #1

Maury
Lake

GRIT #9

GRIT #6

GRIT #8

DDH G-78-1

GRIT #7

Ejas
Lake



MINERAL RESOURCES BRANCH
ASSESSMENT REPORT
6903
NO.

BARRIER REEF RESOURCES LTD. (NPL.)
LOCATION MAP
- of -
DIAMOND DRILL HOLE G-78-1
GRIT "C" GROUP
KAMLOOPS MINING DIVISION, B.C.
TECHNICAL WORK BY: KERR, DAWSON AND ASSOCIATES LTD. SCALE: 1:5,000
DRAWN BY: W. G. DATE: OCTOBER, 1978.
APPROVED BY: J. M. DAWSON, P. ENG. DRAWING NO.