



PETRA GEM EXPLORATION of CANADA LTD.

3540 West 41st. Ave., Vancouver, B.C. V6N 3E6

BUS 263-2678

RES 733-6902

DRILLING REPORT

MIR 3, MIR 7 CLAIMS, ATLIN M.D.

MAPSHEET 104N, Lat. 59°37.5'N, Long. 132°50'W

FOR

UNION OIL COMPANY OF CANADA LTD.

335-8th. Ave. SW

Calgary, Alberta

BY

B. J. PRICE, M.Sc.

PETRA GEM EXPLORATION OF CANADA LTD.

200-3540 W. 41st. Ave.

Vancouver, B.C.

MINERAL REVENUE ACT ASSESSMENT NO. 1
NO. 6905

OCTOBER 7, 1978

Part 1 of 2



TABLE OF CONTENTS

	<u>Page No.</u>
Location and Access	1
Claims	1
Drilling	1
Drilling Costs	4
Assaying	5
Drill Supervision	5
Surface Plans	5

LIST OF ILLUSTRATIONS

FIGURE 1: Location Map - Atlin, B.C.	2
FIGURE 2: Claim Sketch - Trout Lake Area	3
FIGURE 3: Plan of grids and drill holes	6
FIGURE 4: Drill Plan - "Graben" Area	7
FIGURE 5: Index Map	(in pocket)

DRILLING REPORT-MIR CLAIMS

LOCATION AND ACCESS (Figure 1)

The claims are located 50 km (32 mi.) east-northeast of Atlin, B.C., mapsheet 104-N. Center of the drilling area is at Lat. $59^{\circ}37.5'N$ and Long. $132^{\circ}50'W$. Atlin is reached by road or air from Whitehorse, Y.T., the nearest major supply center, approximately 150 km northeast. The claims are reached only by helicopter. The drill camp was serviced by Transwest Helicopters, based at Atlin.

CLAIMS (Figure 2)

Drilling was done on MIR 3 and MIR 7 claims, record numbers 93 and 127, with expiry dates July 5, 1978 and Sept. 17, 1978, respectively. Each claim consists of 20 units as shown on the accompanying map (figure 2).

DRILLING

During the period August 11 to August 27, 1978, three BQ diamond drill holes totalling 1475 feet were drilled on the claims by Arctic Diamond Drilling Ltd., Whitehorse, Y.T. The program was supervised by B.J. Price, M.Sc., Petra Gem Exploration Ltd., under contract to Union Oil Co. of Canada Ltd.

Core was stored at DDH 3 on the property under cover of plastic and plywood. Selected sections were split, and assayed by Min-En Laboratories Ltd., North Vancouver, B.C.

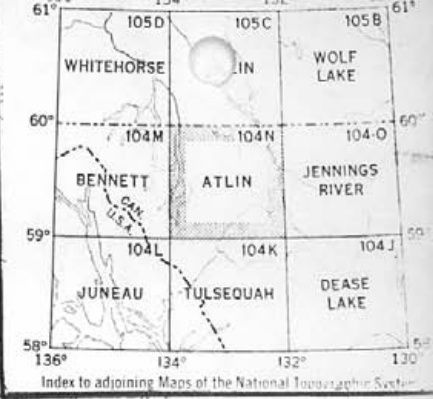
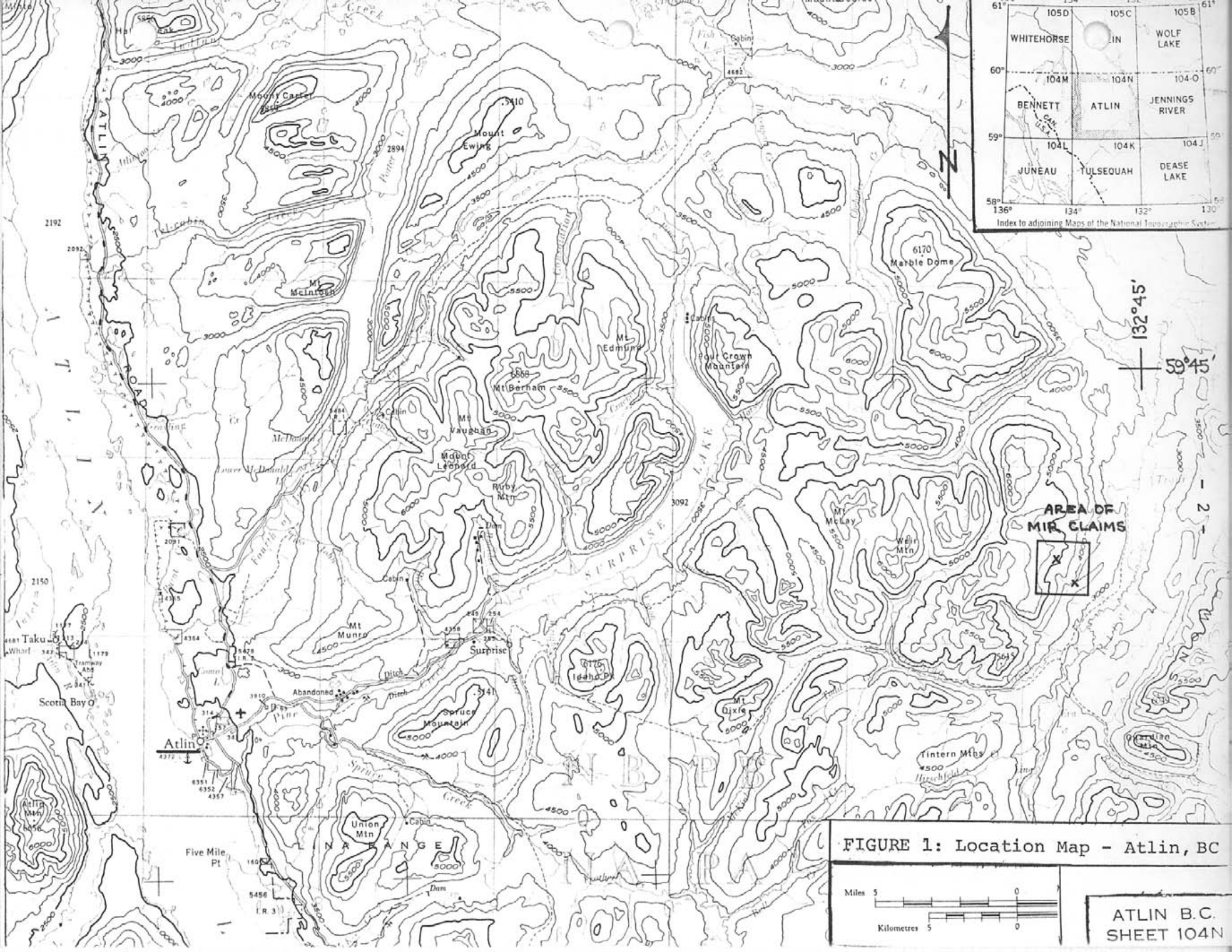
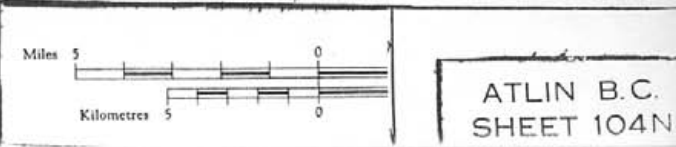


FIGURE 1: Location Map - Atlin, BC





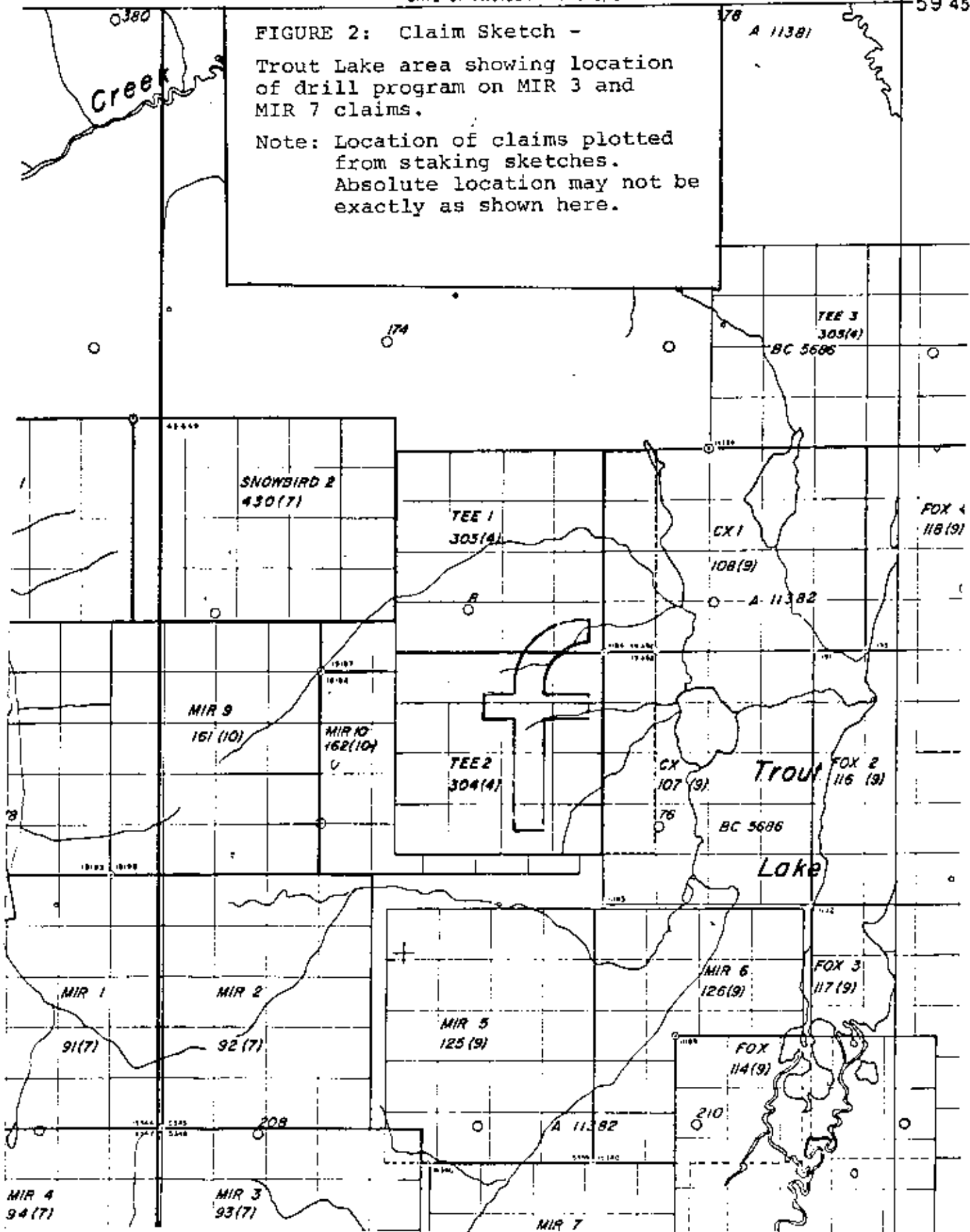
DATE OF PHOTOGRAPHY 1948.75

132° 45' 59' 45"

FIGURE 2: Claim Sketch -

Trout Lake area showing location of drill program on MIR 3 and MIR 7 claims.

Note: Location of claims plotted from staking sketches. Absolute location may not be exactly as shown here.



DRILLING COSTS

Diamond drilling done by Arctic Diamond Drilling Ltd. was on a contract basis with the following rates:

Mobilization costs	\$ 1100.00
Demobilization	1100.00
Core-drilling	19.00 per foot
Setting casing in overburden	19.00 per foot
Reaming casing (below 20ft.)	10.00 per foot
Field time (setting up camp, moving testing, reaming etc.)	16.60 per man/hr. 9.00 per machine/hr.
Use of camp facilities	17.50 per man-day
Core boxes	6.00 per box
Core splitter	60.00 per month
Materials left on property	cost + 10%

Total drilling costs were \$42,108.31. A complete listing of charges is provided on the attached invoices. Personnel employed by Arctic were:

- Foreman & Runner - Colin Johnson
- Runner - Norbert Reinhardt
- Helpers - Ray Morin, Gary McRobb

HELICOPTER COSTS

Helicopters used during the project were Transwest Helicopters-Hughes 500 c @ \$225/hr.; Yukon Air-Hughes 500D @ \$325/hr.; and Buffalo Air-Gazelle @ \$340/hr. Fuel costs are in addition to the hourly rate.

Complete cost breakdowns and copies of invoices are provided.



ASSAYING

Min-En Laboratories Ltd. provided all assaying services. Uranium was assayed by multi-acid extraction and also by "normal" rock geochemical methods. Several samples were assayed for lead, zinc, silver, and several were analyzed geochemically for tin, tungsten and arsenic. Assay invoices and assay results are included in the appendices. Assay results are correlated with core descriptions as required.

DRILL SUPERVISION

Supervision of the drilling program was provided by Petra Gem Exploration Ltd. at the following rates:

Daily supervision	\$ 150.00 per day
Ground transportation (GMC Vandura-1977)	0.25 per mile
VHF Radio	75.00 per month
Magnetometer	150.00 per month
Disbursements (expenses etc.)	cost + 10%

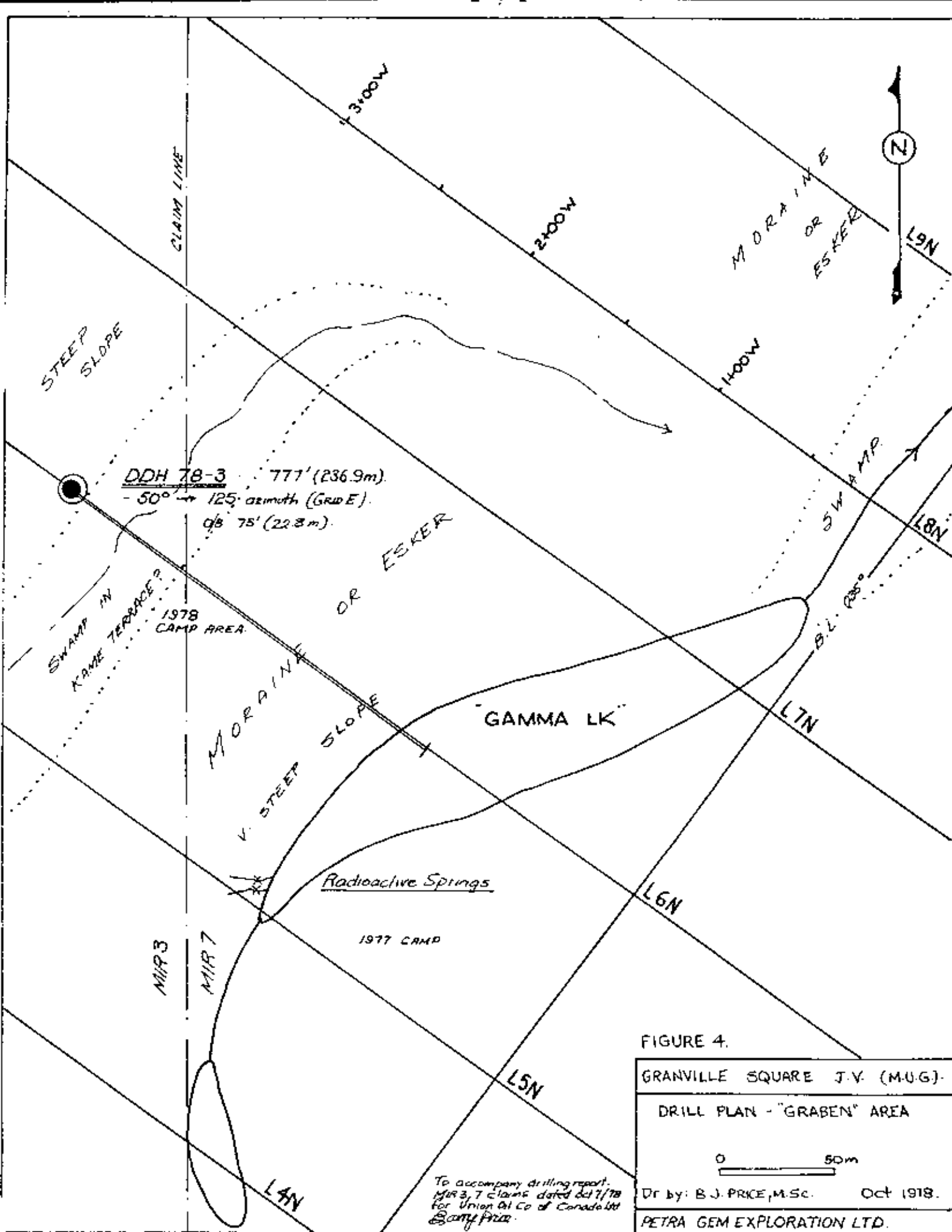
A detailed invoice showing all charges is provided in the appendices.

SURFACE PLANS

Surface plans showing location of the three drill holes are provided in figures 3 and 4 with an index map (figure 5) in pocket.

Respectfully submitted
BARRY PRICE, M.Sc., F.G.A.C.
October 7, 1978

Barry Price.



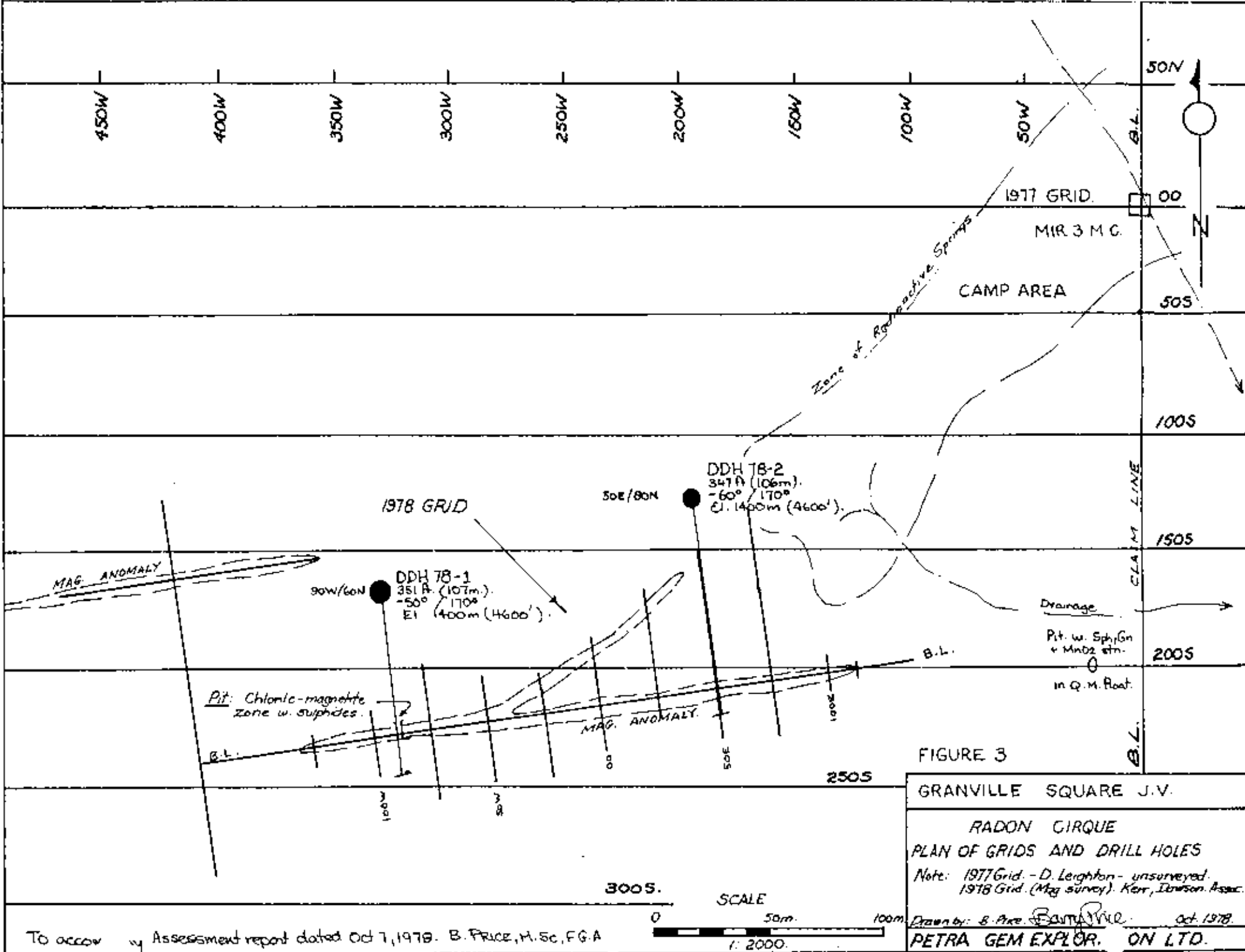
DDH 78-3 : 777' (236.9m).
 - 50° → 125° azimuth (Grd E).
 @ 75' (22.8m).

FIGURE 4.
 GRANVILLE SQUARE J.V. (M.U.G.)
 DRILL PLAN - "GRABEN" AREA

0 50m

Dr by: B.J. PRICE, M.Sc. Oct 1978.
 PETRA GEM EXPLORATION LTD.

To accompany drilling report.
 Mir 3, 7 claims dated Oct 7/78
 for Union Oil Co of Canada Ltd
 B. J. Price



To accompany Assessment report dated Oct 7, 1978. B. PRICE, M.Sc., F.G.A.



APPENDICES

- I Drill Hole Data
- II Core Logs and Assays
- III Assay Sheets
- IV Itemized Cost Statement
- V Invoices
- VI Qualifications



APPENDIX I
DRILL HOLE DATA

	<u>Loc.</u>	<u>Elev.</u>	<u>Depth</u>	<u>Az</u>	<u>Incl.</u>
DDH 78-1	90w/60N(1978)	1400m(4600')	351' (107m)	170°	-50°
78-2	50E/80N(1978)	1400m(4600')	347' (105.8m)	170°	-60°
78-3	L6N-300w	1000m(3280')	777' (236.9m)	125°	-48.5°

DRILL HOLE LOG

UNION OIL MINERALS DEPARTMENT

* indicates values in percent

PAGE 1 OF 6

PROJECT M.U.G. (Granville Sq.)
 PROPERTY M.I.R. Claims
 STARTED August 14, 1978
 COMPLETED August 16, 1978
 LOGGED BY B. Price, M.Sc.

BEARING 170°
 INCLINATION -50°
 DEPTH 351' (107m)

HOLE NO. DDH 78-1
 COORDINATES 90W/60N (1978)
 ELEVATION 1400m(4600')

Barry Price

DEPTH	DESCRIPTION	SAMPLE NO.	LENGTH	Rad. T.C.	U ₃ O ₈ %	U _G ppm	Pb % ppm*	Zn % ppm*	Ag O ₂ ppm*	Sn ppm	W ppm
0-10.5' (3.2m)	Overburden										
10.5' (3.2m)	Qtz. monzonite. F.xln., Bi+Hb., rel fresh, minor attn. of feldspars, minor amount fine muscovite (sercite?). Bi. altered ptly to chlorite. Q-Fsp has graphic texture. Few phenocrysts fsp.			2800							
16' (4.8)	M.gr. Q.Monz, as above	1626	1'/.3m		.005	20ppm	22				
18' (5.5m)	Q. Monz. as above. Strongly oxidized and fractured. Rusty stn. on fractures, yellow clay altn. MnO ₂ + minor py? on fractures. Sections w. argillic? altn.			2800							
26.5' (8.1m)	Q. Monz. strongly fractured + oxidized Rusty fractures, MnO ₂ + pyrite on fracture surfaces. Poor recov. in this section No sample #1662. Ticket not used.	1663	5.5' (1.6m)								
32' (9.8m)	Q. Monz. Yellow-gn. (clay?) altn. Fractured + friable. Bi → clay + sericite	1627	2'/0.6m	2800	.005	30.5	9 *				
34' (10.4m)	Q. Monz. Moderate altn., clay + ser. clay seams along fractures, 60° to core axis. Bi → chl., ser., V.fine siliceous seams			2800							
36.5' (11.1)	Q.Monz. Mod. altn., clay + sericite, clay seams, fine siliceous seams.	1661	2.5' (0.3m)		.005	39.0					

DRILL HOLE LOG

UNION OIL MINERALS DEPARTMENT

DEPTH	DESCRIPTION	SAMPLE NO.	LENGTH	Rad T.C.	U ³⁰⁸ %	U _G ppm	Pb % ppm*	Zn % ppm*	Ag oz. ppm*	Sn ppm	W ppm
39' (11.9m)	Clay altn strong @ 40'. W. minor Fluorite. Fine yellow radioactive seam on lower contact. (Autunite?)		1.5'/.5m	3000- 3400		.004	31.0				
40.5' (12.3m)	Q.Monz. Soft, sericitic. Sl. higher radiometric response. Adjacent to Autunite? fracture @ 40.'	1660	2.5'/.8m		.003	26.0	11 *	78 *	0.6*		
43' (13.1m)	Q.Monz. Finely xln. Minor amts. Autunite?, particularly @ 45'	1659	2'/.6m		.008	65.0					
45' (13.7m)	Q.Monz. Med - cs.xln. Soft but rel. cohesive. Bi+Hb → chl., Feldspars creamy (mod clay altn?). Abund rusty fractures. Some w. non radioactive yellowish seams. (resemble serpentine)			2700 -2800							
54' (16.5m)	Adjacent radiometrically high zone	1657	1'/.3m		.006	35.5					
55' (16.7m)	Q.Monz., minor fluorite, yellow specks (Uranium min?)	1656	0.2'		.058	480.0					
55.2' (16.8m)	Adjacent radiometrically high zone	1658	1'/.3m		.004	22.5					
74.5' (22.7m)	Q.Monz. As before but w. few oxidized fractures. Med - cs.xln. Hb → chl. Creamy feldspars. Prob some sercite but no apparent clay. Most fractures 60-70° to core axis but some are parallel.			2600							

DRILL HOLE LOG

UNION OIL MINERALS DEPARTMENT

DEPTH	DESCRIPTION	SAMPLE NO.	LENGTH	Rad. T.C.	U ₃ O ₈ %	U _G ppm	Pb % ppm*	Zn % ppm*	Ag oz. ppm*	Sn ppm	W ppm
28.7' (27m)	Q. Monz. Adjacent to mineralized fracture	1655	1' / 0.3m		.005	24.0					
29.7' (27.3m)	Q. Monz. Fracture with fluorite & poss. U. min	1654	0.2'		.153	850.0					
29.9' (27.4)	Q. Monz. Adjacent to min fracture	1653	1' / 0.3m		.004	18.0					
27' (29.6m)	Q. Monz. Adjacent radiometrically high veinlet (Sample #1629 - .005% U)	1651	1' / 0.3m		.003	18.5					
28.6' (30.1m)	Black uraniferous fracture coating. Sampled 98.	1629	1' / 0.3m	2900	.005	40	470		0.5		
29' (30.2)	Q. Monz. Adjacent radiometrically high veinlet.	1652	1' / 0.3m		.003	11.7					
30.3' (30.9)	Q. Monz. f. xlln phase as @ 10'-18'										
30.2' (31.1m)	Q. Monz. Med - cs xlln as before										
31.7' (35.7m)	Q. Monz. sl. coarser. More Hb, less Bi. Hb altered to chl. Sericite present in small vug-like cavities (Green flaky min).			2600- 2700							
32.5' (37.7)	As before. Yellow-gn. fracture coating sampled for geochem check	1630	6" / .15m	2800	.005	37	62	160	0.6		
38.2' (42.1)	Q. Monz. cf. 74.5-117'. Med. xlln. Ser + chl., but less HB than before.										
44' (43.9m)	Q. Monz. coarsely xlln as before smoky qtz. phenocrysts prominent			2600- 2700							
57.5' (48m)	Q. Monz. Med. xlln. as before. Few fractures have green mineral coating. (sericite?) Minor arsenopyrite + Cu. min @ 167.1			2800							
74 (53m)	Q. Monz. f. xlln. - cs. xlln. (pegmatitic bands in f. xlln. matrix). Minor purple + green fluorite in coarser bands.	1631	4' / 1.2m		.009	44.5	18 *	90 *	0.6 *		

DRILL HOLE LOG

UNION OIL MINERALS DEPARTMENT

DEPTH	DESCRIPTION	SAMPLE NO.	LENGTH	Rad. T.C.	U ₃ O ₈ %	U _G ppm	Pb % ppm*	Zn % ppm*	Ag oz. ppm*	Sn ppm	W ppm
	coarser xln. character. Core soft and crumbly. Feldspars altered. 2" chloritic band @ 252.4'										
53.3' (77.2m)	As above. Chloritic band ~ 60° to core	1643	1' / .3m		1.002	15.2	9	* 300 *	0.6 *		
54' (77.4m)	Q. Monz. Med - cs. xln. Less oxidized + fractured than before. Fresh, rel. unaltered. Minor chl + sericite.										
64' (80.5m)	Q. Monz. f. xln. phase. Fresh minor chl. altn. in top 2". No sulphides + no radiometric response.			2690							
66.3' (81.2)	Q. Monz. med. xln. V. fresh and v. few fractures. Radiometric T.C. sl. higher										
66.8' (81.3)	" " " " "	1644	1' / .3m	2825	.004	17.2					
269.8')	(Chloritic altn zone 4" thick. Sl. higher radiometric reading)	1645	4"		.015	85.0	55 *				
70.25' (82.4)		1646	1' / .3m		.003	18.0					
89.5' (88.3)	Same, but rusty stains along more abundant fractures										
98' (90.9m)	Fine. xln phase. Geochem check	1647	1' / .3m		.004	19.0	10 *	110 *	0.5 *		
128.5' (100.2)	Q. Monz. xln. Fairly fresh. Some rusty stains, Cohesive, few fractures. No. rad. response.	1648	1' / .3m		.006	27.5					
134.5' (102m)	" " " Geochem check	1649	1' / .3m		.004	20.0	6 *	46 *	0.5 *		
144.5' (105m)	" " " Chloritic zone @ 345. No. vis. min.	1650	1' / .3m		.011	34.5	19 *	138 *	0.6 *		

DRILL HOLE LOG

UNION OIL MINERALS DEPARTMENT

*indicates values
in ppm

DDH 78-2

PAGE 1 OF 6

PROJECT M.U.G. Granville Square BEARING 170° HOLE NO. DDH 78-2
 PROPERTY MIR claims INCLINATION -60° COORDINATES 50E/80N (1978 GRID)
 STARTED August 17, 1978
 COMPLETED August 18, 1978
 LOGGED BY B. Price, M. Sc. DEPTH 347' (105.8m) ELEVATION 1400m (4600')

Bary Price

DEPTH	DESCRIPTION	SAMPLE NO.	LENGTH	T.C.	U _{308A} %	U _G ppm	Pb ppm	Zn ppm	Ag ppm		
0-10' (0-3m)	Casing in overburden										
10' (3m)	Q. Monzonite. Med. xln., broken, soft & crumbly. Weakly altered. Mafics → chlorite. Feldspars → Lt. gn. sericite			2532							
	Rec poor in first 7'. (2.5')										
26.5' (8.1m)	Q. Monz? Aplitic. finely xln., light colored (fewer mafics). Sericite abundant as patches, disseminations and fracture coatings. Occasional seam of white clay mineral. Minor Fe, Mn oxide coatings. Numerous silica veinlets. Minor amounts dissem. purple fluorite. Pronounced banding caused by absence or destruction of mafics along fractures. At 37' is 3" band rich in epidote - sericite (*- this zone radiometrically higher).	1663	6.5/2m		.009	55	95	290	0.6		
33' (10.1m)	Finely xln. Q. Monz.	1664	4'	2807	.019	160					
37' (11.3)	" " Soft, crumbly, sericitic	1665	5'	3100	.014	115					
42' (12.8)	" " Altered, sericite, MnO ₂ dendrites	1666	5'	3175	.008	42					
47' (14.3)	" " As L zone	1667	5'		.007	55					

DRILL HOLE LOG

UNION OIL MINERALS DEPARTMENT

DEPTH	DESCRIPTION	SAMPLE NO.	LENGTH	U _{308A}	U _G	Pb	Zn	Ag	Cu	Sn	W
				§	ppm	ppm	ppm	ppm	ppm	ppm	
245 (74.7m)	Q. Monz. As before but with strong chlorite-sericite-epidote alteration. giving dark green color. Mineralized with dissem. <u>chalcopyrite</u> , hematite (dusty red) probable magnetite, sphalerite, galena (?) Min. + alteration confined to 2 fractures 1 and 2" wide.	1676	1.'	.004	33.5	.03 §	.68 §	0.38 (oz/T)	520	56	3
246 (75m)	Sample for geochem check. Q. Monz. unaltered as @ 244'	1677	1'/.0.3m	.006	38.0	32	730	0.7			
249.5 (75.9m)	Q. Monz. f. xln. Moderate to strong sericitic alteration. Core strongly fractured. Some rusty stn. along fractures <u>Fluorite</u> @ 249.7 on fracture.										
255.5 (77.9)	Med-coarse Q. Monz. Weathers slightly buff. Moderate to strong sericitization.										
261 (79.6)	Shear zone., Sericite + saussurite Qtz. veinlets or silicic patches on hanging wall. No anomalous radiometrics.										
262 (79.9)	Q. Monz. as @ 255.5, but strong sericitic altn. assoc. w. shear zone. @ 266-270, 2-3 ft. of lost core. very crumbly (faulted?).								262	3182	
270 (82.3m)	Q. Monz. Med-coarsely xln. Rel. unfractured. Feldspars are creamy colored and from phenocrysts to 15 mm in places. Weak to moderate sericite mostly along fractures 50-60° to core.								270	3100	

DRILL HOLE LOG

UNION OIL MINERALS DEPARTMENT

DEPTH	DESCRIPTION	SAMPLE NO.	LENGTH	D	T.C.	U+Th	Th.	(counts/10 sec.)
	Radiometric Readings	GLS-4						
	Calibrated frequently.							
	Initial background.-----				2578	23	7.5	
				17	2532	20.6	8.4	
				34	2807	28.6	9.8	
				38	3100	27	7	
				42	3175	33	11	
				52	3077	29	11	
				62	2917	28	8.3	
				66	2827			
				68	2746	28	7	
				84	2824	28	7.8	
				89	2841	34	10.5	
	*Background (Outdoor logging).-----				3030	22.8	8.2	
				95	3108	22	7.75	
				132.5	3120	29.5	9	
				165	3171	22.1	11.5	
				193.5	3122	24.2	7.2	
				208.5	3520	29	9.5	*
				215.5	3046	24	9.8	
				219.3	3210	29	9.0	
				225	3338	31	9.0	*
				236.5	3329	28.2	8	
				245	3170	21.6	9.6	
				262	3182	26	7	
				270	3100	26	9	

DEPTH	DESCRIPTION	SAMPLE NO.	LENGTH	U _{308A} %	U ppm.	Pb ppm.	Zn ppm.	Ag ppm.		
277.5 (84.6m)	Q. Monz. Med. xln. Chlorite-sericite altn as before. Occasional patch of sl. stronger alteration i.e. 313-314(95.4m) (poss higher K content in rock).									
327 (99.7m)	As before but strongly broken & fractured								95.7m	2860
349.5 (106.6m)	Q. Monz. strong sericite alteration w. pyritic & possible sphalerite in shattered rock. Feldspars start to appear brownish.	1706	1' /0.3m	.003	27.0	23	60	3.1		
353 (107.6m)	Q. Monz. FAULT ZONE. Rock shattered and altered, greenish, mylonitized. (Quartz grains milled). in sericite - clay -chlorite matrix. V. soft in places									
372 (113.4m)	(i.e. 372-374). Greenish. High T.C. possibly from K. content	1707	2' /0.6m	.006	26.5					113.7m
385.5 (117.5m)	Q. Monz. FAULT ZONE. fine-med. xln. chloritic * LOST 5' (1.5m)									113.7m
396(120.7m)	As before. sheared & faulted. LOST 4' (1.2m)									
412(125.6) (125.6m)	Q. Monz. Gradational to f. xln. with large creamy feldspar phenocrysts. Fine pepperty mafics. Moderate saussuritization. Shattered adjacent									126.2m
421'(128.4m)	to fault. (FAULT - chloritic w. hematite).									2671
461(140.5m)	As above. Geochem check	1708	1' /0.3m	.003	22.	19	45	0.8		
482.3' (147m)	Hard. dark. f. xln chloritic zone hematitic specks.	1709	2' /0.6m	.005	37.5					2682

DRILL HOLE LOG

UNION OIL MINERALS DEPARTMENT

DEPTH	DESCRIPTION	SAMPLE NO.	LENGTH	U ³⁰⁸ A					
728.6 (222.1m)	Fault zone? Strongly sericitized zone soft with greenish shears.								
732' (223.2m)	As above.	1723	1'	.003%					
737 (224.7 (224.7m)	Q. Monz. finely xln phase. w. porph. feldspars. Sericitized in places. (shears @ 757'). Poss		(0.3m)						
757' (230.8m)	slightly higher T.C. radiometrically.	1724	2'	.003%					
765 (233.2m)	Fault zone @ base of above.- shattered		(0.6m)						
765 (233.2m)	Q. Monz. Coarse, equigranular as above.								
777 (236.9m)	END OF HOLE								
	RADIOMETRIC READINGS.C/Sec.		Depth	TC	U+Th	Th			
	<i>Barry Price</i>		26.2m	86	2635	25	10.8		
			34.8m	114	2770	24	11		
			42.5m	139.5	2850	28.5	11		
			49m	161	2911	26.5	11.8		
			57.9m	190	2754	25.5	9.8		
			76.2m	250	2787	28.8	9.8		
			79.9m	262	2754	26.2	9.5		
			95.7m	314	2860	26	7		
			113.7m	373	2913	27	7.5		
			126.2m	414	2671	24	6.3		
		147m	482.3	2682	24	7.5			
		148m	485.5	2905	23.2	9.2			

MIN-EN LABORATORIES LTD.

705 WEST 15TH STREET
 NORTH VANCOUVER, B.C.
 Phone: 980-5814

Certificate of Assay

TO: Union Oil Co.,

PROJECT No. _____

P.O. Box 999,

DATE Sept. 6/78.

Calgary, Alta.

File No. 8-399

SAMPLE No.	$U_{38}O_2$ %			
1626	.005			
27	.005			
28	.004			
29	.005			
30	.005			
31	.009			
32	.010			
33	.008			
34	.004			
35	.003			
36	.006			
37	.005			
38	.007			
39	.004			
40	.005			
41	.004			
42	.006			
43	.002			
44	.004			
45	.015			
46	.003			
1647	.004			

MIN-EN Laboratories Ltd.

CERTIFIED BY *[Signature]*

MIN-EN LABORATORIES LTD.

705 WEST 15TH STREET
 NORTH VANCOUVER, B.C.
 Phone: 980-5814

Certificate of Assay

TO: Union Oil Co.,

PROJECT No. _____

P.O. Box 999,

DATE Sept. 6/78.

Calgary, Alta.

File No. 8-399

SAMPLE No.	Pb %	Zn %	Ag oz/ton	
1633	.11	.95	.21	
34	.11	1.12	.32	
35	.05	.38	.06	
36	.20	.47	.08	
37	.22	.55	.13	
1638	.23	.58	.18	

MIN-EN Laboratories Ltd.

CERTIFIED BY 

MIN-EN LABORATORIES LTD.

705 WEST 15TH STREET
 NORTH VANCOUVER, B.C.
 Phone: 980-5814

Certificate of Assay

TO: Union Oil Co.,

PROJECT No. _____

P.O. Box 999,

DATE Sept. 6/78.

Calgary, Alta.

File No. 8-399

SAMPLE No.	U ₃ O ₈ %		
1648	.006		
49	.004		
50	.011		
51	.003		
52	.003		
53	.004		
54	.153		
55	.005		
56	.058		
57	.006		
58	.004		
59	.008		
60	.003		
61	.005		
1662	no sample		

MIN-EN Laboratories Ltd.

CERTIFIED BY

[Signature]

MIN-EN LABORATORIES LTD.

705 WEST 15TH STREET
 NORTH VANCOUVER, B.C.
 Phone: 980-5814

Certificate of Assay

TO: Union Oil Co.,
335-8th Ave. S.W.,
Calgary, Alta.

PROJECT No. Mug
 DATE Sept. 15/78.
 File No. 8-438

SAMPLE No.	Cu %	Pb %	Zn %	Ag oz/ton	U ₃ O ₈ %
1662	--	--	--	--	.006
63	--	--	--	--	.009
64	--	--	--	--	.019
65	--	--	--	--	.014
66	--	--	--	--	.008
67	--	--	--	--	.007
68	--	--	--	--	.007
69	--	--	--	--	.003
70	--	--	--	--	.007
71	--	--	--	--	.007
72	--	--	--	--	.003
73	--	--	--	--	.006
74	--	--	--	--	.003
75	--	--	--	--	.008
76	--	.03	.68	.38	.004
77	--	--	--	--	.006
1678	--	--	--	--	.005
1701	--	--	--	--	.005
02	--	--	--	--	.006
03	.150	--	--	.14	.006
04	.019	--	--	.01	.009
1705	--	--	--	--	.005

MIN-EN Laboratories Ltd.

CERTIFIED BY *[Signature]*

MIN-EN LABORATORIES LTD.

705 WEST 16TH STREET
 NORTH VANCOUVER, B.C.
 Phone: 980-5814

Certificate of Assay

TO: Union Oil Co., PROJECT No. Mug
335-8th Ave. S.W., DATE Sept. 15/78.
Calgary, Alta. File No. 8-438

SAMPLE No.	Cu %	Pb %	Zn %	Ag	U ₃ O ₈ %
1706	--	--	--	--	.003
07	--	--	--	--	.006
08	--	--	--	--	.003
09	--	--	--	--	.005
10	--	--	--	--	.003
11	--	--	--	--	.003
12	--	--	--	--	.002
1713	--	--	--	--	.003
1751	.178	.02	.02	.52	.004

MIN-EN Laboratories Ltd.
 CERTIFIED BY *[Signature]*

MIN-EN LABORATORIES LTD.
705 WEST 15TH STREET
NORTH VANCOUVER, B.C.
Phone: 980-5814

Certificate of Assay

TO: Union Oil Co.,

PROJECT No. _____

335-8th Ave. S.W.,

DATE Sept. 20/78.

Calgary, Alta.

File No. 8-453

SAMPLE No.	Pb %	Zn %	Ag	U ₃ O ₈ %
1714	--	--	--	.004
15	--	--	--	.002
16	--	--	--	.002
17	--	--	--	.007
18	--	--	--	.001
19	.03	.08	.09	.001
20	.02	.07	.02	.001
21	.01	.04	.02	.001
22	.02	.05	.04	.001
1723	--	--	--	.003
170-2	.03	.10	.02	.003

MIN-EN Laboratories Ltd.,
CERTIFIED BY *[Signature]*

COMP

Union Oil

GEOCHEMICAL ANALYSIS DATA SHEET

No. 8-399

PROJECT No.:

MIN-EN Laboratories Ltd.

DATE: Sept. 6,

705 WEST 15th ST., NORTH VANCOUVER, B.C. V7W 1T2

1978.


PHONE (604) 960-5814

ATTENTION:

Sample Number	Mo ppm	Cu ppm	Pb ppm	Zn ppm	Ni ppm	Co ppm	Ag ppm	Fe ppm	Hg ppb	As ppm	Mn ppm	Au ppb	U ppm	Sn ppm	W ppm
81	90	95	100	105	110	115	120	125	130	135	140	145	150	155	160
1626			22				.						20.0		
27			9				.						30.5		
28							.						31.0		
29			470				05						40.0		
30			62	160			06						37.0		
31			18	90			06						44.5		
32			16	132			06						55.0		
33							.						38.5	90	8
34							.						22.5	120	5
35							.						18.5	170	4
36							.						40.5	130	5
37							.						36.5	320	6
38							.						35.5	850	7
39			800	3100			51						16.8		
40			24	240			06						26.0		
41			10	180			06						22.0		
42			10	260			05						23.5		
43			9	300			06						15.2		
44							.						17.2		
45			55				.						85.0		
46							.						18.0		
47			10	110			05						19.0		
48							.						27.5		
49			6	46			05						20.0		
50			19	138			06						34.5		
51							.						18.5		
52							.						11.7		
53							.						18.0		
54							.						850.0		
1655							.						24.0		

ANALYSED BY

[Signature]

COMP 

Union Oil

GEOCHEMICAL ANALYSIS DATA SHEET

No. 8-399

PROJECT N.:

MIN - EN Laboratories Ltd.

DATE: Sept. 6,


ATTENTION

705 WEST 150th ST., NORTH VANCOUVER, B.C. V7M 1T2
PHONE (604) 980-5814

1978.

6	10	15	20	25	30	35	40	45	50	55	60	65	70	75	80
Sample Number	Mo ppm	Cu ppm	Pb ppm	Zn ppm	Ni ppm	Co ppm	Ag ppm	Fe ppm	Hg ppb	As ppm	Mn ppm	Au ppb	U ppm		
85	90	95	100	105	110	115	120	125	130	135	140	145	150	155	160
1656							*						480.0		
57							*						35.5		
58							*						22.5		
59							*						65.0		
60			11	78			06						26.0		
61							*						39.0		
1662							*						no sample		
							*								
							*								
							*								
							*								
							*								
							*								
							*								
							*								
							*								
							*								
							*								

D.H. Brown


COMP 

Union Oil

GEOCHEMICAL ANALYSIS DATA SHEET

MIN-EN Laboratories Ltd.

705 WEST 15TH ST., NORTH VANCOUVER, B.C. V7M 1L7
PHONE (604) 960-5814

 No. **8-399**

DATE: **Sept. 7,**
1978.

PROJECT No.

ATTENTION:

Sample Number	6	10	15	20	25	30	35	40	45	50	55	60	65	70	75	80
	Mo ppm	Cu ppm	Pb ppm	Zn ppm	Ni ppm	Co ppm	Ag ppm	Fe ppm	Hg ppb	As ppm	Mn ppm	Au ppb				
bl 45	90	95	100	105	110	115	120	125	130	135	140	145	150	155	160	
1629										1.0						
30										3						
1633										5						

[Handwritten signature]

COMPA Union Oil

GEOCHEMICAL ANALYSIS DATA SHEET

File No. 8-438

PROJECT No. Mug

MIN-EN Laboratories Ltd.

DATE: Sept. 15

ATTENTION M. Gidluck

705 WEST 10TH ST., NORTH VANCOUVER, B.C. V7W 1T2
PHONE 464-980-5814

1978.

Sample Number	Mo ppm	Cu ppm	Pb ppm	Zn ppm	Ni ppm	Co ppm	Ag ppm	Fe ppm	Hg ppb	As ppm	Mn ppm	Au ppb	U ppm
81	90	95	100	105	110	115	120	125	130	135	140	145	150
1662													21.5
63													55.0
64													160.0
65													115.0
66													42.0
67													55.0
68													60.0
69													22.0
70													29.5
71													60.0
72													23.0
73													50.0
74													24.5
75													65.0
76													33.5
77													38.0
1678													42.0
1701													38.5
02													47.5
03													55.0
04													65.0
05													38.5
06													27.0
07													26.5
08													22.0
09													37.5
10													27.5
11													15.0
12													14.5
1713													17.0

[Handwritten signature]

COMP. Union Oil

Union Oil

GEOCHEMICAL ANALYSIS DATA SHEET

File No. 8-438

PROJECT NO. Mug

Mug

MIN-EN Laboratories Ltd.

DATE: Sept. 15

ATTENTION: M. Gidluck

M. Gidluck

705 WEST 19TH ST., NORTH VANCOUVER, B.C. V7W 1C2
PHONE (604) 980-5814

1978.

6 Sample Number	10 Mo ppm	15 Cu ppm	20 Pb ppm	25 Zn ppm	30 Ni ppm	35 Co ppm	40 Ag ppm	45 Fe ppm	50 Hg ppb	55 As ppm	60 Mn ppm	65 Au ppb	70 W ppm	75 Sn ppm	80
61 35	90	95	100	105	110	115	120	125	130	135	140	145	150	155	160
1663			95	290			0%								
1676		520					.						3	56	
1677			32	730			07								
1678			1080	8050			27								
1701			30	110			0%								
1702			16	65			07								
1703			34	155			.			285					
1704			88	220			.			5					
1705			18	75			06								
1706			23	60			31								
1708			19	45			08								
1710			450	570			25								
1711			84	280			18								
1712			152	225			34								
1713			17	45			0%								
1751					15	9	.			71					
							.								
							.								
							.								
							.								
							.								
							.								
							.								
							.								
							.								
							.								

H. G. Gidluck
 H. G. Gidluck

PROJECT No. _____

MIN - EN Laboratories Ltd.

DATE: Sept. 20 1978.

205 WEST 58th ST. NORTH AND LOWER B.C. 57th ST.
PHONE (204) 920 5814

ATTENTION: M. Gidluck

Sample Number	Mo ppm	Cu ppm	Pb ppm	Zn ppm	Ni ppm	Co ppm	Ag ppm	Fe ppm	Hg ppb	As ppm	Mn ppm	Au ppm	U ppm	Sn ppm	W ppm
84	85	90	95	100	105	110	115	120	125	130	135	140	145	150	155
1714			7400	9650			300						25.5		
15			124	500			12						23.5		
16			77	850			27						16.0		
17			84	450			24						50.0		
1721													7.5	140	4
1704			280	700			12						33.5	205	5
1722															

[Handwritten signature]

MIR CLAIMS - DRILLING
ITEMIZED COST STATEMENT

1. DRILLING

Mobilization		\$ 1100.00
Moving in - setting up	174 man hrs. @ \$16.60/hr.	2888.40
		3988.40

Hole 78-1, -50°, 351 ft., BQ size

Overburden	10 ft. @ \$19/ft.	190.00
Core drilling	341 ft. @ \$19./ft.	6479.00
Testing	4 man hrs. @ \$16.60/hr.	66.40
	2 machine hrs. @ \$9.00/hr.	18.00

Hole 78-2, -60°, 347 ft., BQ size

Moving	56 man hrs. @ \$16.60/hr.	929.60
Overburden	10ft. @ \$19/ft.	190.00
Core drilling	337 ft. @ \$19/ft.	6403.00
Reaming through cave	3 man hrs. @ \$16.60/hr.	49.80
	1½ machine hrs. @ \$9.00/hr.	13.50
Testing	2 man hrs. @ \$16.60/hr.	33.20
	1 machine hrs. @ \$9.00/hr.	9.00

Hole 78-3, -50°, 777 ft., BQ size

Drill move & camp move	150 man hrs. @ \$16.60/hr.	2490.00
Overburden	20ft. @ \$19/ft.	380.00
Reaming casing in bedrock	56 ft. @ \$10.00/ft.	560.00
Core drilling	480 ft. @ \$19.00/ft.	9120.00
	277 ft. @ \$20.00/ft.	5540.00
Reaming through cave	13 man hrs. @ \$16.60/hr.	215.80
	6½ machine hrs. @ \$9.00/hr.	58.50
Testing	2 man hrs. @ \$16.60/hr.	33.20
	1 machine hr. @ \$9.00/hr.	9.00

Materials left in hole

7x10' lengths BW casing @ \$63.00 ea	441.00
2x10' lengths NW casing @ \$74.55 ea	149.10
1 BW casing shoe	180.30
1 NW casing shoe	243.50
	1013.90

Plus 10%	101.39
----------	--------



Core Boxes	59 boxes @ \$6.00 ea	354.00
Equipment Lost	1 sleeping bag	108.00
	Plus 10%	10.80
Camp facilities	20 man days @ \$17.50/day	350.00
Core splitter rental	13 days @ \$60/month	26.00
<u>Demobilization</u>	1/2 x \$2200.00	1100.00
<u>Move out</u>	73 man hrs. @ \$16.60/hr.	1211.80

Materials left on property

8 timbers @ \$28.57	228.56
20 planks, 2 x 10' @ \$7.52	150.40
20 bags QuikGel @ \$6.40	128.00
2 bags Cal-seal @ \$45.00	90.00
2 drums Gas @ \$94.05 ea.	188.10
2 drums Diesel @ \$87.48 ea.	174.96
	<u>960.02</u>
Plus 10%	96.00

Drilling Total Invoices \$ 42,108.31

II HELICOPTER TRANSPORT

1. Transwest Helicopters Hughes 500C		
Move in Aug. 11, 12	22.8 hrs. @ \$255.00/hr.	5814.00
	Fuel	752.40
Air support (Food, mail, personnel etc.)		
Aug. 19, 20, 22, 25, 1978	9.6 hrs. @ \$255/hr.	2448.00
	Fuel	316.00
Move out Aug. 27)		
Camp inspection &)-12.2hrs. @ \$255/hr.		3111.00
clean up Aug. 30)		
	Fuel	366.00
Fuel supplied to other helicopter used		
in drill move 302 gal. @ \$1.50		453.00



2. Buffalo Air Gazelle @ \$340/hr.	
Move in Aug. 12, 1978	
6.3 hrs. @ \$340/hr.	\$ 2142.00
Drill move Aug. 16, 1978	
1.6 hrs. @ \$340/hr.	544.00
3. Yukon Airways Hughes 500D @ \$325.00/hr.	
Drill move Aug. 20, 1978	
2.1 hrs. @ \$325/hr.	682.50
Fuel	52.50
Move out Aug. 27, 1978	
7.3 hrs. @ \$325/hr.	2372.50
Fuel & Oil	207.00
	<hr/>
Total Helicopter Invoices	\$19,260.90
Amount claimed for assessment	(18,833.70)

III ASSAYING (Min-En Laboratories Ltd.)

Sample preparation rates and assay rates as per invoices.

Invoice 4409 Amt. applicable	803.50
Invoice 4424 Amt. applicable	593.10
	<hr/>
Total Assaying Invoices	\$ 1,396.60
Amount claimed	(1,212.00)

IV DRILL SUPERVISION B. J. Price, M.Sc.

@ \$150/day + costs	
Mobilization August 3-5 3 days @ \$150/day	450.00
Move in & camp set up August 11-12	
2 days @ \$150/day	300.00
Drill supervision August 13-26	
13 days @ \$150/day	1950.00
Move out & demobilization Aug. 27,28,29	
5 days @ \$150/day	750.00
Report preparation Sept. 14,15,17,18,19	
Oct. 2, 3, 4, 8 days @ \$150/day	1200.00
	<hr/>
	4650.00

Transportation - G.M.C. Vandura

Aug. 3-6, 11,27,28,29 Sept. 11,12	
2500 mi @ \$0.25/mi	625.00
Radio rental August 1978 1 mo @ \$75.00/mo	75.00



Expenses - travelling, meals, gas, airfare, motel etc.	
Aug. 3-5	\$ 195.78
Aug. 5-11	207.33
Aug. 27-Sept. 13	225.42
Disbursements, telephone, airfare etc.	<u>235.01</u>
Total Drilling Supervision	\$6,213.54
Amount claimed	(4,000.00)

TOTAL COSTS APPLICABLE \$ 68,979.35

TOTAL COSTS FILED FOR ASSESSMENT 66,154.00

COSTS FILED Sept. 13, 1978

MIR 7 claim	22,050.00
MIR 3 claim	44,104.00
	<u>66,154.00</u>

\$ 66,154.00

Barry Price
BARRY PRICE, M.Sc.

QUALIFICATIONS

NAME: Barry James Price.

BORN: Smithers, B.C., August 19, 1944.

EDUCATION:

- A) High school: Smithers, B.C. Graduated 1961.
- B) University: B.Sc. Honors Geology 1965, Thesis topic:
(U.B.C.) "Tertiary Sediments at Driftwood
Creek, Smithers Map Area, B.C."
M.Sc., Geology, 1972, Thesis topic:
"Minor Elements in Pyrite and
Exploration Applications of
Minor Element Studies."

EMPLOYMENT RECORD:

- 1964, (summer): GEOLOGICAL SURVEY OF CANADA., junior assistant, mapping party in Rocky Mts., supervised by Dr. G.B.Leech.
- 1965 - 1968 CHEVRON STANDARD LTD., Alberta. Senior assistant, regional mapping party in Mackenzie and Richardson Mts. Subsurface geological studies, carbonate reef research, wellsite supervision and production department studies.
- 1968 (summer) MANEX MINING LTD. Smithers, B.C. Geological mapping and diamond-drill supervision.
- 1969 (summer) MANEX MINING LTD. Smithers, B.C. Property mapping and evaluation, geophysical and geochemical studies, supervision of diamond drilling, geological mapping for Jade Queen Mines Ltd.
- 1970 (summer) ARCHER, CATHRO AND ASSOC., Party chief, regional study of sedimentary copper potential of Mackenzie Mts. Reconnaissance mapping and geochemical interpretation.
- 1971 (summer) J.R.WOODCOCK CONSULTANTS LTD., Project geologist in charge of exploration of massive sulphide prospect, including geological mapping, geochemistry, geophysics, and diamond drilling. Concurrently supervised regional exploration program.



ARCTIC DIAMOND DRILLING LTD.

184 Industrial Road, Whitehorse, Yukon Y1A 2V1 (403) 667-6434

INVOICE #2025
AUGUST 15, 1978

Granville Sq

IN ACCOUNT WITH:

Union Oil Co. of Canada Ltd.,
335 - 8th Avenue S.W.,
P. O. Box 999,
Calgary, Alberta.
T2P 2K6

Drilling charges for the period August 11 - 15, 1978

Mobilization

Re: clause 15 of contract - 1/2 x \$2,200.00 = \$1,100.00

Moving in and setting up

174 man hours @ \$16.60 per hour = 2,888.40 \$3,988.40

Hole: #78-1 - 50° x BQ

Overburden

0 - 10 = 10 feet @ \$19.00 per foot = \$ 190.00

Core Drilling

10 - 351 = 341 feet @ \$19.00 per foot = 6,479.00 \$6,669.00

TOTAL INVOICE

\$10,657.40

DATE	DESCRIPTION	AMOUNT
7-27-78	78-01	10,657.40

RECEIVED
10 1978
740

10 1978
740

10 1978
740

Footings and Extensions _____

Company No. _____

Field Approval *[Signature]*

DATE 27 1978

Executive _____

Ex. of Taxes *[Signature]*



ARCTIC DIAMOND DRILLING LTD.

184 Industrial Road, Whitehorse, Yukon Y1A 2V1 (403) 657-6434

INVOICE #2027

August 30, 1978

IN ACCOUNT WITH:

Union Oil of Canada Ltd.,
335 - 8th Avenue S.W.,
P. O. Box 999,
Calgary, Alberta.
T2P 2K6

UNION OIL COMPANY		
INTERNAL ACCOUNTING		
AGE	CODE	AMOUNT
17222	02-01	31,450.91
TOTAL		31,450.91
FIELD	TEST	
APR	APR	
178.00		\$ 84.40

Drilling charges for the period August 16 - 27, 1978

Hole: #78-1 - 50° x BQ

Testing
 4 man hours @ \$16.60 per hour = \$66.40
 2 machine hours @ \$9.00 per hour = 18.00

Hole: #78-2 - 60° x BQ

Moving
 56 man hours @ \$16.60 per hour = \$929.60
Overburden
 0 - 10 = 10 feet @ \$19.00 per foot = 190.00
Core Drilling
 10 - 347 = 337 feet @ \$19.00 per foot = 6,403.00
Reaming Through Cave
 3 man hours @ \$16.60 per hour = \$49.80
 1½ machine hours @ \$9.00 per hour = 13.50 63.30
Testing
 2 man hours @ \$16.60 per hour = \$33.20 ✓
 1 machine hour @ \$9.00 per hour = 9.00 ✓ 42.20 \$7,628.10

Hole: #78-3 - 50° x BQ

Moving (including moving camp)
 150 man hours @ \$16.60 per hour = \$2,490.00
Overburden
 0 - 20 = 20 feet @ \$19.00 per foot = 380.00
Reaming Casing in Bedrock
 20 - 76 = 56 feet @ \$10.00 per foot = 560.00
Core Drilling
 20 - 500 = 480 ft. @ \$19.00 per ft. = 9,120.00
 500 - 777 = 277 ft. @ \$20.00 per ft. = 5,540.00 14,660.00
Reaming Through Cave
 13 man hours @ \$16.60 per hour = \$215.80
 6½ machine hours @ \$9.00 per hour = 58.50 274.30
Testing
 2 man hours @ \$16.60 per hour = \$ 33.20
 1 machine hour @ \$9.00 per hour = 9.00 42.20

ARCTIC DIAMOND DRILLING LTD.

Page 2

Invoice #2027 - Union Oil of Canada Ltd. - Cont'd

Materials Left in Hole

- 7 only 10' lengths BW casing @ \$63.00 ea. =	\$441.00		
- 2 only 10' lengths NW casing @ \$74.55 ea. =	149.10		
- 1 only BW casing shoe	180.30		
- 1 only NW casing shoe	243.50		
	<u>\$1,013.90</u>		
	Plus 10%	<u>101.39</u>	<u>\$1,115.29</u>
			\$19,521.79

Core Boxes

59 core boxes @ \$6.00 each = \$354.00

Equipment Lost - while moving camp

Re: clause 18 of contract

1 only Sleeping bag, property of G. McRobb \$108.00
 Plus 10% 10.80 \$118.80

Use of Camp Facilities

20 man days @ \$17.50 per day = \$350.00

Core Splitter Rental

August 14 - 26 = 13 days @ \$60.00 per month = \$ 26.00

Demobilization

Re: clause 15 of contract

1/2 x \$2,200.00 = \$1,100.00

Moving

Packing up and moving out to demobilization point

73 man hours @ \$16.60 per hour = \$1,211.80

Materials Left on Property

8 only 8"x8"x16' timbers @ \$28.57 = \$228.56
 20 only 2"x10"x16' planks @ \$7.52 = 150.40
 20 bags Quik Gel @ \$6.40 = 128.00
 2 bags Cal Seal @ \$45.00 ea. = 90.00
 2 only 45 gal. drums Gas @ \$94.05 ea. = 188.10
 2 only 45 gal. drums Diesel @ \$87.48 ea. = 174.96
\$960.02

Plus 10% 96.00 \$1,056.02 \$ 3,367.82

Footings and Extensions _____

Company No. _____

TOTAL INVOICE
 Field Approval _____

\$31,450.91



SEP 12 1978

Department Approval _____

Executive Approval _____

Ex. of Taxes _____



Buffalo AIRWAYS LTD.

BOX 168, FORT SMITH, N.W.T.
XOE DPO
TELEPHONES:
FORT SMITH 872-2216
FORT SIMPSON 695-2404
HAY RIVER 874-3333
TELEX 037-4819
FIXED WING AND HELICOPTERS

No 3095

August 28 19 78

Union Oil Co. of Canada Ltd.,
335 - 8th Avenue, S.W.,
P.O. BOX 999,
Calgary, Alberta.
T2P 2K6.
Attention: Minerals Division

Winnipeg

DESCRIPTION	AMOUNT
August 16, 1978 Charter Ticket # 13153 Cazelle C-GOCA Pilot: Myers Sling Trill equipment MIR Claims Flying: 1.6 hours @ \$340.00/hour	544.00
<div data-bbox="396 936 1288 1702" data-label="Complex-Block"> <p>UNION OIL CO. OF CANADA LTD. MINERALS DIVISION</p> <p>PLEASE PAY BY INVOICE NO STATEMENT TO BE FOLLOWED</p> <p>17279 0303 LOW</p> <p>2% INTEREST CHARGE ON ALL OVERDUE ACCOUNTS</p> <p>JPS.</p> <p>Footings and Extensions 544.00 Company 11 Field 11 Ex. of Taxes 11</p> </div>	\$544.00

INVOICE

BUFFALO AIRWAYS LTD. BOX 168. FORT SMITH, N.W.T.



Buffalo AIRWAYS LTD.

BOX 188, FORT SMITH, N.W.T.
XOE 0P0
TELEPHONES
FORT SMITH 872-2218
FORT SIMPSON 895-2404
HAY RIVER 874-3333
TELEX 037-4819
FIXED WING AND HELICOPTERS

No 3094

Sumville Co.

August 28 1978

Union Oil Co. of Canada Ltd.,
335 - 8th Avenue, S.W.,
P.O. Box 999,
Calgary, Alberta.
T2P 2K6
Attention: Minerals Division

DESCRIPTION		AMOUNT												
August 12, 1978 Charter Ticket # 12168 Gazelle C-GOCA Pilot: Myers Sling Drill equipment from Surprise Lake to MIR Claims Flying: 6.3 hours @ \$340.00/hour		2,142.00												
<table border="1"> <tr> <td>INVOICE NO.</td> <td>17279</td> <td>CODE</td> <td>0303</td> <td>AMOUNT</td> <td>2142.00</td> </tr> <tr> <td colspan="4">TOTAL</td> <td>2142.00</td> <td></td> </tr> </table>		INVOICE NO.	17279	CODE	0303	AMOUNT	2142.00	TOTAL				2142.00		\$2,142.00
INVOICE NO.	17279	CODE	0303	AMOUNT	2142.00									
TOTAL				2142.00										
<p>PLEASE PAY BY INVOICE NO STATEMENT TO FOLLOW</p> <p>2% INTEREST CHARGE ON ALL OVERDUE ACCOUNTS</p>		<p>Company No. _____</p> <p>Field Approval _____</p> <p>SEP 5 1978</p> <p>Ex. of Taxes _____</p>												

INVOICE

BUFFALO AIRWAYS LTD. BOX 188, FORT SMITH, N.W.T.



TRANSWEST HELICOPTERS (1965) LTD.

P.O. BOX 16, PITT MEADOWS, B.C. V0M 1P0 CANADA

TELEPHONE: AREA (604) 465-5151

TELEX 04-507500

Granville Ag.

DATE: Aug 27, 1978

Union Oil Co of Canada
335-8th Ave S.W.
Box 999
Calgary, Alberta
T2P 2K6

Flight Ticket Nos. 1551 & 3617
Aug 11, 12, 1978

22.8 Hours @ 255.00
Plus Fuel

Amount of this invoice

Helicopter Hughes 500 C-FQFR
D. Bruns, Pilot

Area 9.0

This invoice is due and payable within 10 days

With thanks

INVOICE NO. 25 CANADA LTD.		
MINERALS DEPARTMENT		
LINE	CODE	AMOUNT
17279	03-03	6566.40
	TOTAL	6566.40
FIELD APP: <i>[Signature]</i>	DEPT. APP: <i>[Signature]</i>	DATE: <i>Sept. 18/78</i>
EXECUTIVE APP: <i>[Signature]</i>	CHK. BY: <i>[Signature]</i>	DATE:

\$5814.00
752.40

\$6566.40

Footings and Extensions _____

Company No. _____

Field Approval *[Signature]*

Griff's
AUG 31 1978

Department Approval _____

Executive Approval _____

Ex. of Taxes *[Signature]*

MAR C



TRANSWEST HELICOPTERS (1965) LTD.

P.O. BOX 16, PITT MEADOWS, B.C. V0M 1P0 CANADA

TELEPHONE: AREA (604) 465-5151

TELEX 04-507500

Strawhill Ag

DATE: Aug 27, 1978

INVOICE NO.: 2524

Union Oil Co of Canada
335-8th Ave S.W.
Box 999
Calgary, Alberta



Readings and Extensions _____

Company No. 167

Field Approval [Signature]

AUG 31/1978

Department Approval _____

Executive Approval _____

Ex. of Taxes [Signature]

Flight Ticket # 3625
Aug 11 & 16, 1978

Fuel Charges
JP4 Supplied to C-GOCH
302 Gallons @ 1.50

\$453.00

This invoice is due and payable within 10 days

With thanks

UNION OIL COMPANY OF CANADA LTD.		
GENERALS DEPARTMENT		
FEES	CODE	AMOUNT
17279	C3-03	453.00
TOTAL		453.00
FIELD APP: <u>H.G.</u>	DEPT. APP: <u>[Signature]</u>	DATE: <u>Sept 18/78</u>
EXCISE		



TRANSWEST HELICOPTERS (1965) LTD.

P.O. BOX 16, PITT MEADOWS, B.C. V0M 1P0 CANADA

TELEPHONE: AREA (604) 465-5151

TELEX 04-507500

Branville Sq.
DATE: Aug 30, 1978

INVOICE NO: 2537

Union Oil
335-8th Ave S.W.
Box 999
Calgary, Alberta
T2P 2K6

UNION OIL COMPANY OF CANADA MINERALS DEPARTMENT		
IFE	CODE	AMOUNT
17279	03 03	2764.80
TOTAL		2764.80
FIELD	DATE	
4100	5/16/78	
		\$2449.00
		316.80

Flight Ticket Nos 1549, 1554, 1559, 1562
Nos 19, 20, 22, 25, 1978

2.6 Hours - 255.00
Plus Fuel

Amount of this invoice

\$2764.80

Helicopter Hughes 500 C-FLE
D. Bruns, Pilot

Footings and Extensions _____

Company No. _____

Field Approval _____

Area C.O

SEP 5 1978

Department Field _____

Executive Approval _____



This invoice is due and payable within 10 days

With thanks

1020



TRANSWEST HELICOPTERS (1965) LTD.

P.O. BOX 16, PITT MEADOWS, B.C. V0M 1P0 CANADA

TELEPHONE: AREA (604) 465-5151

TELEX 04-507500

*Stanville
H. Vient*

DATE: September 7, 1978

INVOICE NO.: 2554

Union Oil,
335 - Eighth Ave., S.W.
P.O. Box 999,
Calgary, Alberta,
T2P 2K6

UNION OIL COMPANY OF CANADA LTD.		
MINERALS DEPARTMENT		
AFE	CODE	AMOUNT
17279	0303	3477.00
TOTAL		3477.00
FIELD APP: <i>H</i>	DATE: <i>Sept. 22/78</i>	
EXECUT. APP:		

Flight Ticket Nos. 1572 & 2853
August 27 & 30, 1978

12.2 Hours @ 255
Plus Fuel

\$3,111.00
366.00

Amount of this invoice

\$3,477.00
Receipts and Extensions

Helicopter Hughes 500 C-FQFR
D. Bruns, Pilot

Company No. _____
Field Approval _____

Area 8.4



SEP 13 1978

Department Approval _____
Executive Approval _____

This invoice is due and payable within 10 days

Ex. of taxes _____

With thanks

INVOICE

MIN-EN LABORATORIES LTD.

705 WEST 15TH STREET
NORTH VANCOUVER, B.C.
Phone: 980-5814

DATE Sent. 12/76
YOUR
ORDER NO.

to Union Oil Co.,
335-8th Ave. S.W.,
P.O. Box 999,
Calgary, Alta.
T2P 2K6.

Drill Core

OUR ORDER NO.	TERMS	F.O.B.	QUANTITY	STOCK NUMBER/DESCRIPTION	UNIT PRICE	AMOUNT
P-300						
			16	soil geochem - Pb, Zn, Ag, U <i>17079 10-23</i>	6 30	* 190 80
			16	soil sample preparation	40	* 6 40
			35	rock geochem - U	3 75	135 00
			16	rock geochem - Pb	1 25	20 00
			12	rock geochem - Zn	65	<i>916.70</i> 7 80
			13	rock geochem - Ag	55	8 45
			5	rock geochem - Sn, W	8 25	49 50
			3	rock geochem - As	2 25	6 75
			36	rock sample preparation	1 50	54 00
			5	assays - Pb, Sn, Ag	15 00	90 00
			35	assays - U ₃ O ₈	10 00	360 00
			35	assays - sample preparation	2 00	72 00
				TOTAL		910 75

THESE ARE PROFESSIONAL SERVICES AND PAYABLE WHEN RENDERED.
OVER 30 DAYS 1.5% INTEREST WILL BE CHARGED PER MONTH.

* Soil samples + preparations not applicable to
Drill costs. Amount applicable. \$303 50

INVOICE

MIN-EN LABORATORIES LTD.

705 WEST 15TH STREET
NORTH VANCOUVER, B.C.
Phone: 980-5814

4424

DATE Sept. 19/78.
YOUR
ORDER NO.

1-77 64 60010

Mostly Drill Cos

TO Union Oil,
335-8th Ave. S.W.,
Calgary, Alta.

L

OUR ORDER NO.	TERMS	F.O.B.	MUG. M. Gidluck	
8-438				
QUANTITY	STOCK NUMBER/DESCRIPTION	UNIT PRICE	AMOUNT	
10	soil geochem - Pb, Zn, Ag, U	6 30	* 63	00
10	soil sample preparation	40	* 4	00
31	rock geochem - U	3 75	116	25
14	rock geochem - Pb, Zn	1 90	26	60
12	rock geochem - Ag	65	7	80
1	rock geochem - Cu, Ni, Co, W, Sn	10 20	10	20
3	rock geochem - As	2 25	6	75
31	assays - U ₃ O ₈	10 00	310	00
3	assays - Cu	4 50	13	50
2	assays - Pb, Zn	10 00	20	00
4	assays - Ag	5 00	20	00
31	assays - sample preparation	2 00	62	00
	TOTAL		550	10

THESE ARE PROFESSIONAL SERVICES AND PAYABLE WHEN RENDERED.
OVER 30 DAYS 1.5% INTEREST WILL BE CHARGED PER MONTH.

* Items marked not applicable to drill costs
 Amt. applicable 593.10

MAR



PETRA GEM EXPLORATION of CANADA LTD.
3540 West 41st. Ave., Vancouver, B.C. V6N 3E6
BUS 263-2678 RES 733-6902

September 21, 1978

RECEIVED
MINERALS - LOCAL EXPLORATION
SEP 26 1978
FILE: _____

Union Oil Co. of Canada
Minerals Division
335-8th. Ave. S.W.
P.O. Box 999
Calgary, Alberta
T2P 2K6

- INVOICE -

RE: GRANVILLE SQUARE J.V. MIR CLAIMS, ATLIN, B.C.

Consulting Fees: (as per attached time sheets)
39 days @ \$150/day \$ 5,850.00

Rentals etc.: Radio, SBS-11 4 channels
1 month @ 75.00 75.00 -

Vehicle - 1977 GMV Vandura
3173 mi. @ \$0.25/mi 793.25 -

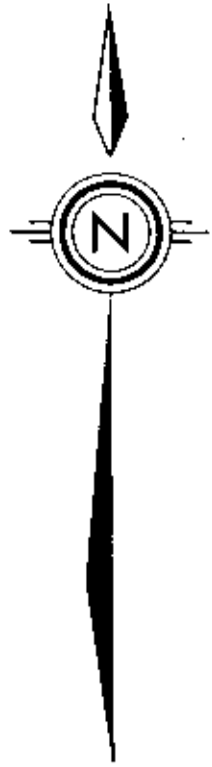
Disbursements:

Expenses: (as per attached accounts)
July 29 - Aug. 5 214.78
Aug. 5 - Aug. 10 207.33
Aug. 28 - Sept. 13 433.72
CN Telecommunications - radio calls 65.65 -
Magnetometer 150.00
Shipping Chg. (Geiger Counter) 14.00
Airfare: Vancouver-Smithers 73.45 -
Vancouver-Calgary return 138.00 -
Radio aerial (6622 Hz) 52.21 -
Flagging & rolls @ 1.20 9.60
Telephone & Telex 20.10 -

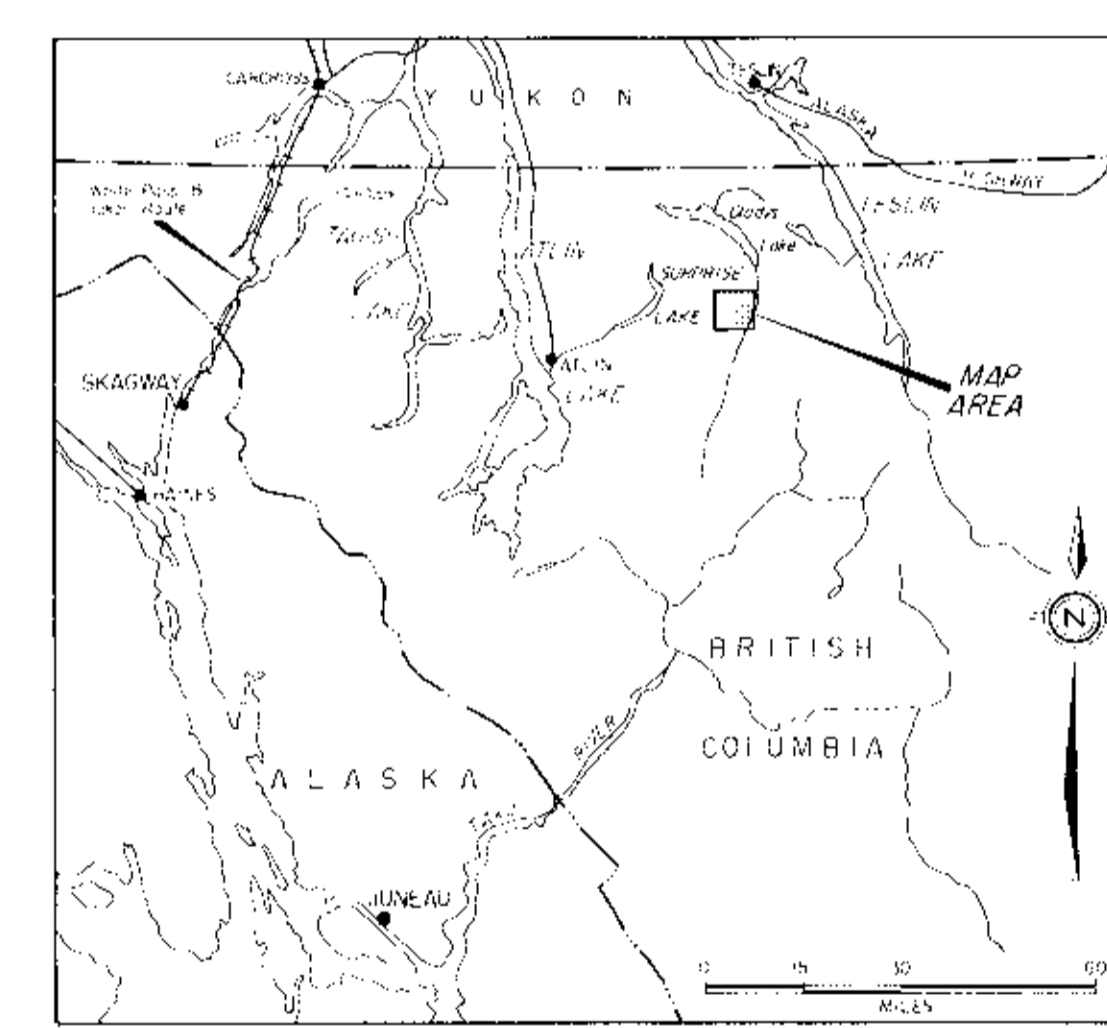
DATE	CODE	DESCRIPTION	AMOUNT
7279	01-03	5850.00	
"	10-04	handling / charges on disbursements	137.88
"	06-02	274.97	\$ 8,234.97
"	10-02	45.75	
"	10-08	281.96	
TOTAL		8234.97	\$8,234.97 Invoice
		1,000.00	Less advance
		\$7,234.97	Balance Owing

NOTE: Payment of \$7,234.97 by Barry Price.
has been made 8234.97 as shown

- 1972 - 1974 MANEX MINING LTD., Vancouver, Geologist
in charge of field projects. Consulting
geological work for New World Jade Ltd.,
and Delphi Resources Ltd.
- 1974 - 1976 Manex Mining Ltd., Geologist in charge
of field projects. Consulting geologist
for Delphi Resources Ltd., Territorial
Gold Placers Ltd., Nephro-Jade Canada Ltd.
- 1976 Petra Gem Exploration Ltd. Geological
Consulting.
- 1975 Elected Fellow, Geological Society of Canada.



T R O U T L A K E
W.L. 854



Part 1 of 2

MINERAL RESOURCES BRANCH
ACTING DIRECTOR
6905
NO.

GRANVILLE SQUARE JOINT VENTURE			
MIR PROPERTY TROUT LAKE, B.C.			
INDEX MAP Grid locations			
1:10000			
m 200 400 600 800 1000			
FIG 175 468 2	PROJECT No. 101A	DATE SEPT, 1978	DRAWN J.R.K.

○ Targets recommended for further exploration
* Redoubt Springs

To accompany drilling report, APP 87
signed dated Oct 7, 1978 by J. A. H. H.
Patterson Geophysical Ltd. For Granville
Square Joint Venture, a Group of Companies
of Canada Ltd. - 2001-1111

Contour interval 25 metres