

PERCUSSION DRILLING REPORT  
ON THE  
BJ MINERAL CLAIMS  
CARIBOO MINING DIVISION  
52°30'N., 121°35'W  
(92 A/12E)  
HIGHLAND-CROW RESOURCES LTD.

BY: R. E. HINDSON, P.Eng.  
September 1-19, 1978

Vancouver, B. C.

October 6, 1978

REGISTRY BRANCH  
6911

## TABLE OF CONTENTS

Description of Work	Page 1
Cost Statement	Page 2
Certificate of Author	Page 3
Certificate of Analyses	Appendix A
<u>Illustrations:</u>	
Figure 1: Index Map 1:250,000	Following page 1
Figure 2: Surface Plan 1:12,000	Map Pocket


PERCUSSION DRILLING REPORT ON THE  
 BJ MINERAL CLAIMS, CARIBOO MINING DIVISION  
 52°30'N., 121°35'W (92 A/12E)  
 HIGHLAND CROW RESOURCES LTD.

DESCRIPTION OF WORK

During the period September 13 to September 15, 1978 inclusive five percussion drill holes totalling 354 metres were drilled on BJ mineral claim number 124 (see Figures 1 and 2 for location of holes). The drilling was conducted by Shepherd Enterprises Ltd. of Vancouver, British Columbia, a member of the Tonto Group of companies. A representative sample of drill cuttings was collected for each 10-foot interval of bedrock drilled. Each sample was assayed for its copper content by Chemex Labs Ltd. of North Vancouver, B. C. The drilling was supervised by Mr. Ken Kelly of Quesnel, B. C. under the direction of Mr. W. R. Bergey, P.Eng. Following a study of the available geophysical and geochemical data on the property by W. R. Bergey and myself, five drill holes were positioned to test a coincident magnetic and copper geochem anomaly that had not previously been drilled.

DRILL DATA

Claim Name & Number	Hole Number		Length		Overburden		Average Cu Content %
	Map Reference	Assay Reference	Ft.	Metres	Ft.	Metres	
BJ 124	69	69-1	250	76.2	25	7.6	less than 0.03% (best assay 0.19% from 40 to 50 ft.)
BJ 124	70	69-2	250	76.2	20	6.1	less than 0.03%
BJ 124	71	69-3	250	76.2	27	8.2	0.08 (best intersection 130-180 ft. 0.14%)
BJ 124	72	69-4	250	76.2	20	6.1	less than 0.03%
BJ 124	73	69-5	160	48.8	30	9.1	less than 0.04%

  
 R. E. Hindson, P.Eng.  
 October 6, 1978



587 00000

6

5

45

4

3

2

30

1

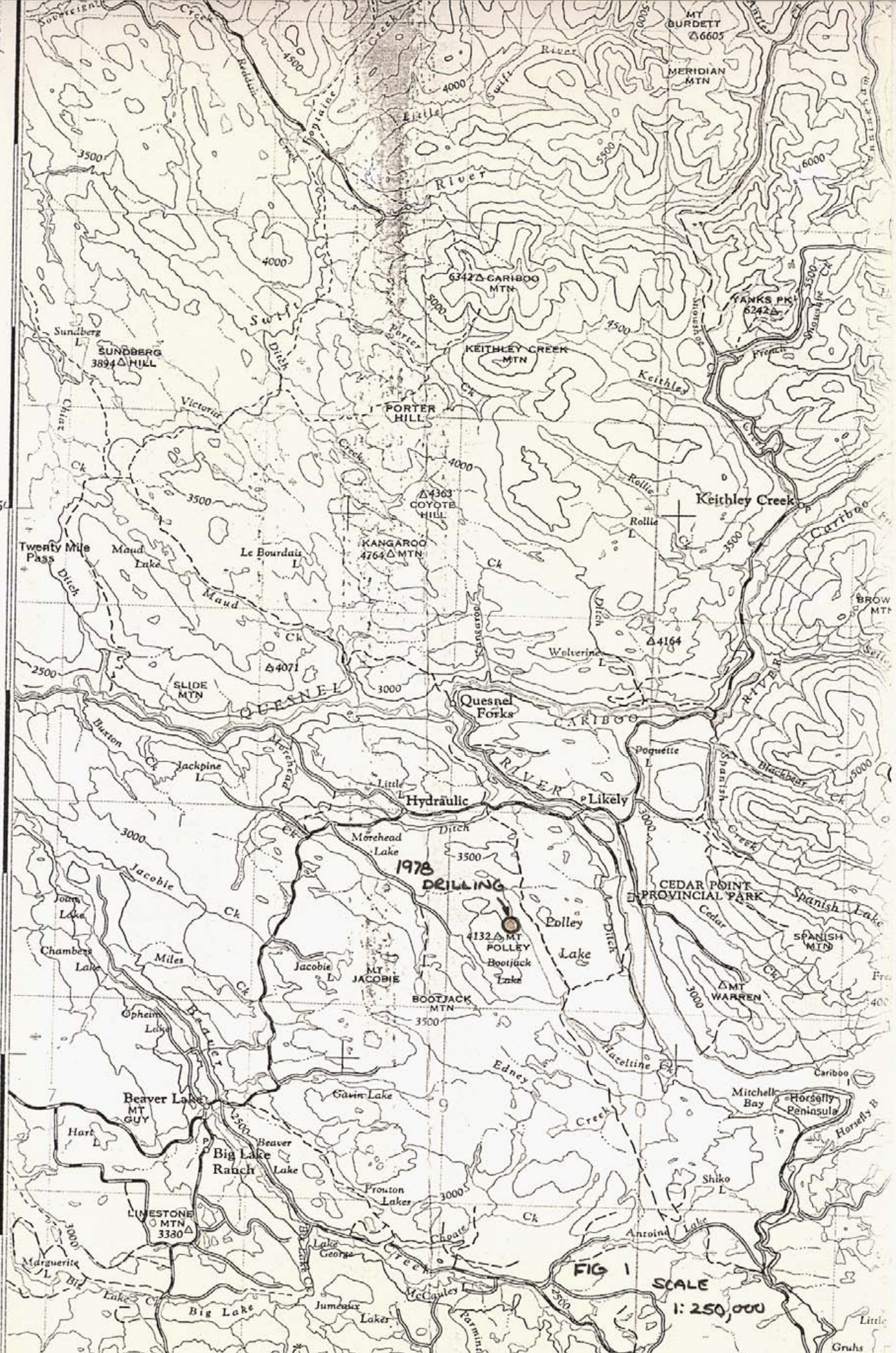


FIG 1  
SCALE  
1:250,000



## COST STATEMENT

### Salaries

#### (a) Field Work

K. Kelly, Field Supervisor, September 5-8, 11-16, 18 & 19, 1978 11.5 days @ \$50.00/day	\$ 575.00
W. R. Bergey, Exploration Manager September 6, 1978 1 day @ \$255.00	255.00

#### (b) Office Work (excluding report preparation)

W. R. Bergey September 1, 5, and 7, 1978 3 days @ \$255.00/day	765.00
R. E. Hindson, Projects Manager September 1, 1978 1 day @ \$220.00	220.00

### Percussion Drilling (Shepherd Enterprises Ltd.)

1,160 feet @ \$4.45/ft.	5,162.00
-------------------------	----------

Mobilization and demobilization	1,000.00
---------------------------------	----------

Positioning of water line	37.00
---------------------------	-------

Sample bags	31.80
-------------	-------

### Meals and Accommodation

Meals	138.25
-------	--------

Accommodation (Moorehead Lake Resort)	208.50
---------------------------------------	--------

### Transportation

Truck Rental (Bowmac)	724.90
-----------------------	--------

Airfare - W. R. Bergey, Vancouver to Williams Lake and return (P.W.A.)	99.35
---	-------

Gasoline	104.94
----------	--------

### Expediting

Hiring of Field Supervisor (Stokes Exploration Management)	120.00
--	--------

Long distance telephone calls	10.00
-------------------------------	-------

Cost Statement (Continued)

Analysis

105 samples prepared and analyzed for copper  
(Chemex Labs Ltd.) \$ 245.70

Incidentals

Chain saw rental (Active Rent-all) 5.00


Shipment of samples - 490 lbs. (Carson Motorways) est. 20.00

Report Preparation

R. E. Hindson  
2.5 days @ \$220.00/day 550.00

TOTAL \$ 10,272.44


I hereby certify that the costs described above are all directly applicable for assessment work.

  
\_\_\_\_\_  
R. E. Hindson, P.Eng.  
October 6, 1978

CERTIFICATE

I, Robert E. Hindson, do hereby certify that:

1. I am a geologist employed by Teck Corporation and reside at 2786 West 31st Avenue in Vancouver, B. C.
2. I am a graduate of Carleton University with a B.Sc. degree in Chemistry and Geology.
3. I am a Professional Engineer registered in the Province of British Columbia.
4. I have practiced my geological profession continuously for the past 12 years and since 1969 in British Columbia.
5. I was engaged in the planning of the percussion drill program conducted on the B.J. claims on the behalf of Highland Crow Resources Ltd.

  
\_\_\_\_\_  
R. E. Hindson, P.Eng.  
October 6, 1978

REHi:mjb

APPENDIX A





# CHEMEX LABS LTD.

212 BROOKSBANK AVE.  
 NORTH VANCOUVER, B.C.  
 CANADA V7J 2C1  
 TELEPHONE: 925-0648  
 AREA CODE: 604  
 TELELEX: 043-52587

• ANALYTICAL CHEMISTS • GEOCHEMISTS • REGISTERED ASSAYERS

## CERTIFICATE OF ANALYSIS

TO: Teck Corp. Ltd.,  
 1199 W. Hastings,  
 Vancouver, B.C.

CERTIFICATE NO. 45964  
 INVOICE NO. 28371  
 RECEIVED Sept. 22/78  
 ANALYSED Oct. 3/78

ATTN:

Rocks

SAMPLE NO. :	PPM Copper
P69-1 25-30	320
30-40	360
40-50	1900
50-60	240
60-70	275
70-80	145
80-90	140
90-100	255
100-110	225
110-120	265
120-130	245
130-140	235
140-150	210
150-160	190
160-170	150
170-180	205
180-190	165
190-200	295
200-210	340
210-220	595
220-230	610
230-240	265
P69-1 240-250	195
P69-2 20-30	130
30-40	510
40-50	250
50-60	330
60-70	475
70-80	440
80-90	325
90-100	240
100-110	290
110-120	270
120-130	265
130-140	230
140-150	255
150-160	225
160-170	190
170-180	220
P69-2 180-190	195
Std.	40



MEMBER  
 CANADIAN TESTING  
 ASSOCIATION

CERTIFIED BY:

*W. J. Shep*





# CHEMEX LABS LTD.

212 BROOKSBANK AVE.  
 NORTH VANCOUVER, B.C.  
 CANADA V7J 2C1  
 TELEPHONE: 985-0848  
 AREA CODE: 604  
 TELEX: 013-52597

• ANALYTICAL CHEMISTS • GEOCHEMISTS • REGISTERED ASSAYERS

## CERTIFICATE OF ANALYSIS

TO: Teck Corp. Ltd.,  
 1199 W. Hastings,  
 Vancouver, B.C.

CERTIFICATE NO. 45965  
 INVOICE NO. 28371  
 RECEIVED Sept. 22/78  
 ANALYSED Oct. 3/78

ATTN: Rocks

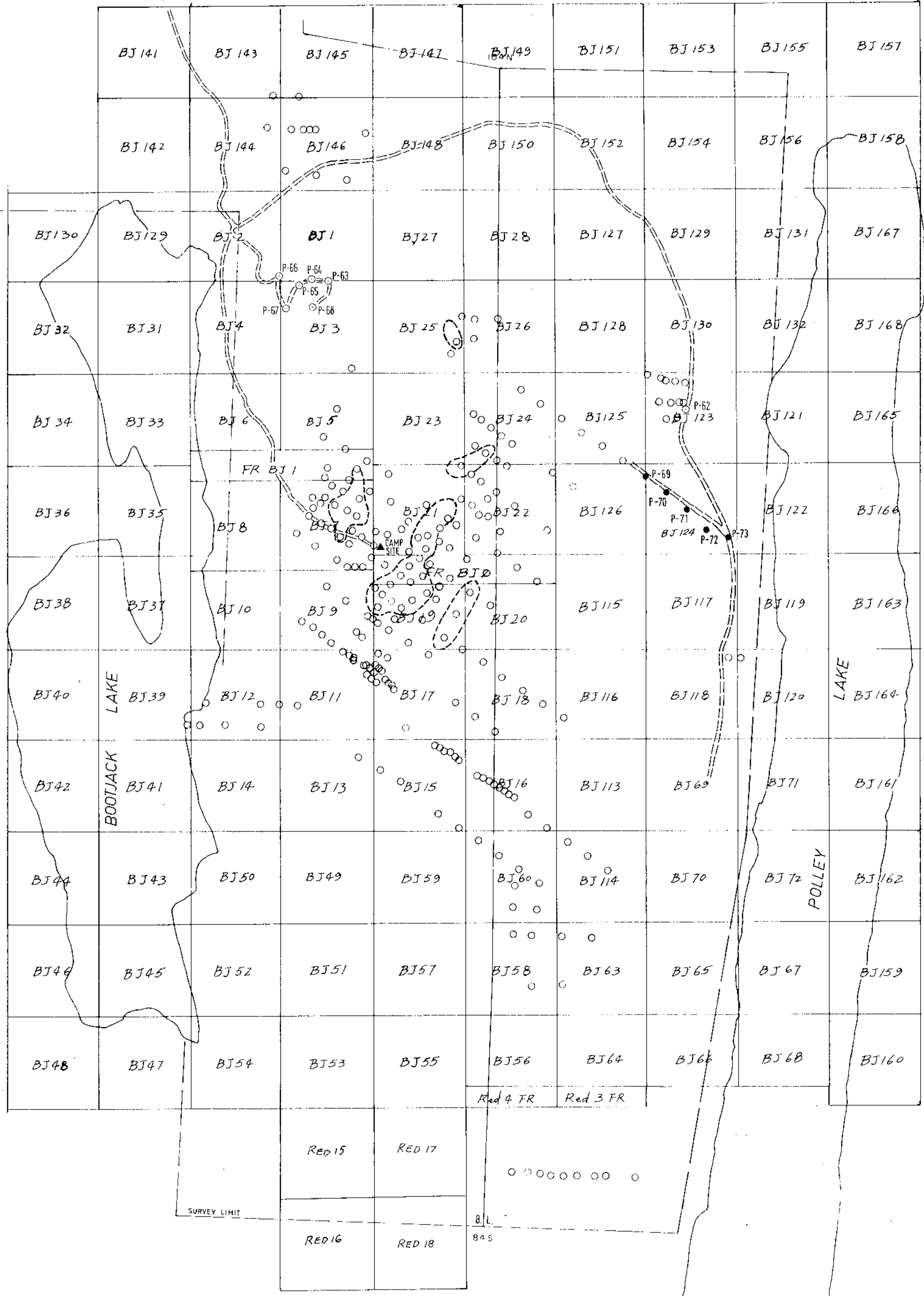
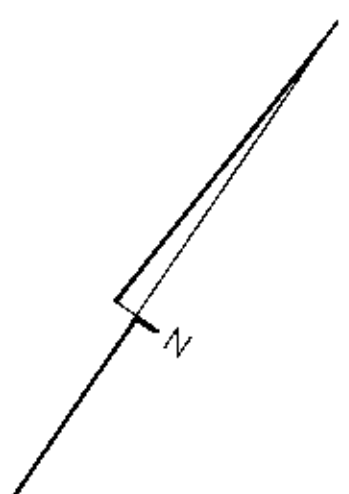
SAMPLE NO. :	PPM Copper
P69-2 190-200	215
200-210	210
210-220	220
220-230	210
230-240	205
P69-2 240-250	295
P69-3 30-40	410
40-50	1450
50-60	1400
60-70	615
70-80	470
80-90	400
90-100	445
100-110	425
110-120	595
120-130	815
130-140	1100
140-150	1700
150-160	1550
160-170	1550
170-180	1250
180-190	640
190-200	645
200-210	700
210-220	545
220-230	450
230-240	380
P69-3240-250	260
P69-4 20-30	665
30-40	1450
40-50	175
50-60	165
60-70	155
70-80	145
80-90	110
90-100	150
100-110	140
110-120	110
120-130	145
P69-4 130-140	625
Std.	40



MEMBER  
 CANADIAN TESTING

CERTIFIED BY: *AP*

HOBBEHEAD LAKE



LEGEND

- PREVIOUS DRILLHOLES
- 1978 PERCUSSION DRILLHOLES
- ◌ KNOWN MINERALIZED ZONES (≥ 30% Cu)
- ACCESS ROAD

MINERAL RESOURCES BRANCH  
 ACCESS PERMIT  
**6911**  
 NO.



HIGHLAND-CROW RESOURCES LTD.  
VANCOUVER, B.C.

CARIBOO-BELL PROPERTY  
1978 PERCUSSION DRILLHOLES

Scale: 1:12000  
(1" = 1000')  
AUG. 1978 93A/13

FIG. 2