

ASSESSMENT REPORT

TYPE: DIAMOND DRILLING

CLAIMS: NIMSIC, NIMSIC 2 to 6, 11, 12,  
QUARTZ 4, 5.

MINING DIVISION: KAMLOOPS

NTS LOCATION: 82M/12 W

LATITUDE: 51°38'

LONGITUDE: 119°50'

OWNER: CRAIGMONT MINES LIMITED

OPERATOR: " " "

AUTHOR: N.B. VOLLO, P.ENG.

DATE: OCTOBER 20th, 1978

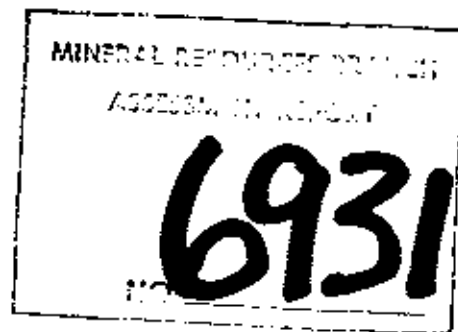


TABLE OF CONTENTS

Introduction	1
Claims	1
History and Previous work	1
Geology	1
Drill Program	1
Core Storage	1
Qualifications	1
Statement of Expenditures	2
Location Map	3
Drill log, MM-1	4
"    "    MM-2	5
"    "    MM-3	7
"    "    MM-4	9
"    "    MM-5	11

In Pocket

Geological Map, 1:5,000, 82M/12MM2  
(Hole locations)

### LOCATION AND ACCESS

The 82M/12 MM group is located on McLennan Mountain, about 10 km east of Clearwater and is accessible by logging and other roads.

### CLAIMS

The property consists of the following claims:

Nimsic, record number 3  
Nimsic 2 to 4, record numbers 355 to 357  
Nimsic 5 and 6, record numbers 528 and 529  
Nimsic 11 and 12, record numbers 877 and 878  
Quartz 4 and 5, record numbers 1064, 1065,

totalling 104 units, located in the Kamloops M.D. and held by Craigmont Mines Limited under Option from Castlemaine Explorations Ltd.

### History and Previous Work

Sulfide showings have been known for at least 50 years and worked on intermittantly since. Diamond drilling was done by Moneta Porcupine in the 1940's and by Calbay Mines in the early 1970's, the latter also doing considerable trenching, but no records of this work are available. Canadian Nickel cut a grid and did a geochemical soil survey over most of the property in 1977. Craigmont Mines carried out magnetic and electromagnetic surveys in 1978.

### GEOLOGY

The property is underlain by rhyolite, rhyolite tuffs and derived sediments, tuffite, andesite and limestone of the Eagle Bay formation. The tuffite unit trends along both limbs of an anticline which plunges east at a low angle. Massive sulfides, mostly pyrrhotite, but containing chalcopyrite, sphalerite and galena, with appreciable silver occur in or near the tuffite horizon. The tuffite has been converted to calc-silicate skarn in places.

### DRILL PROGRAM

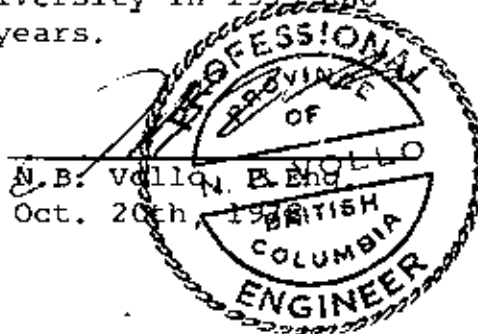
Five diamond drill holes were drilled along the north limb of the tuffite horizon to test coincident geochemical highs and EM conductors. Results were essentially negative.

### CORE STORAGE

The core is stored on the property.

### QUALIFICATIONS

The core was logged by the author who obtained a BA in Geology from the University of Saskatchewan in 1950 and an MSc in geology from McGill University in 1959 and has practised his profession for 28 years.

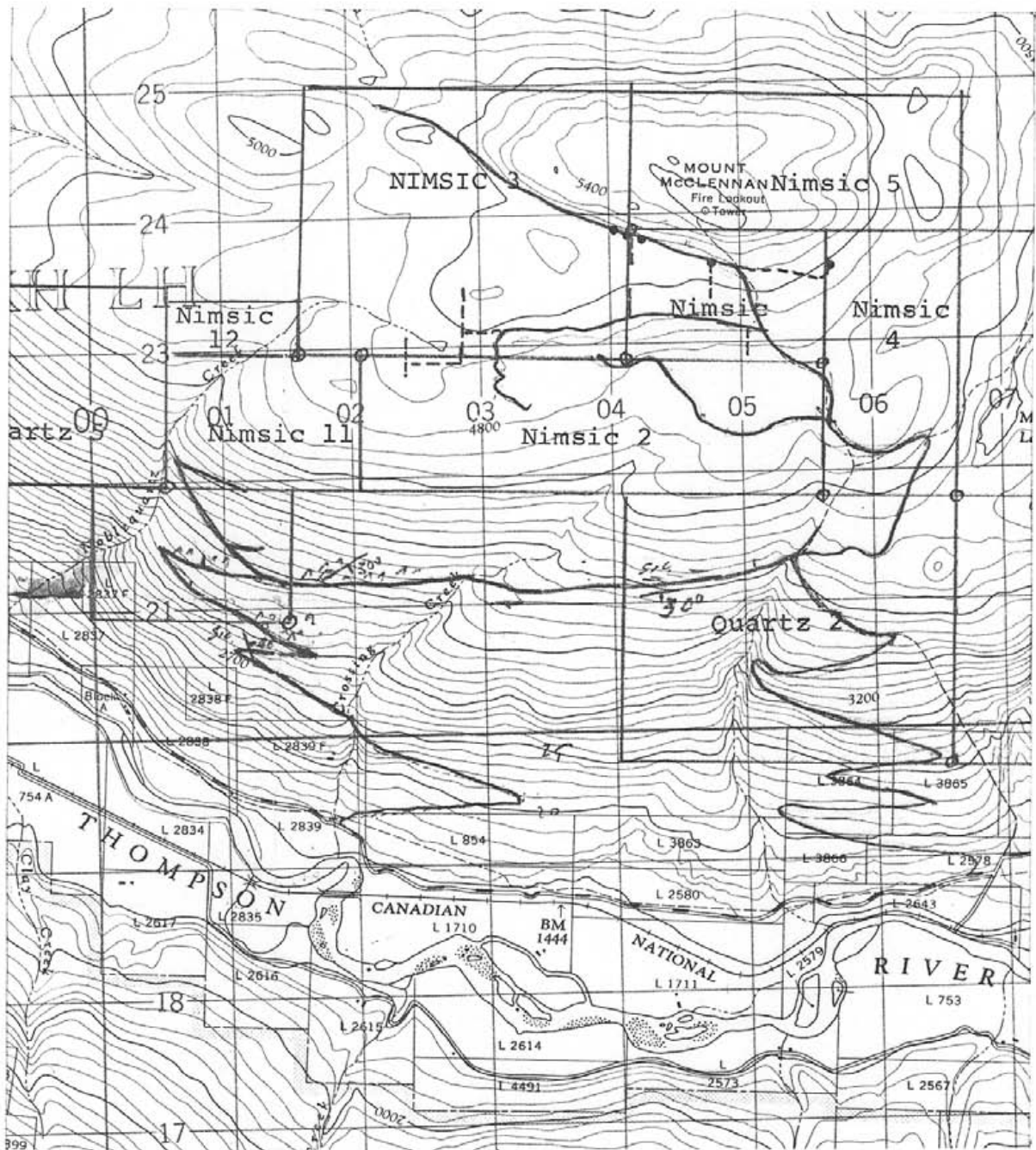


STATEMENT OF EXPENDITURES

MM-1, 3 m overburden at \$40.00 -----	\$ 120.00	
75.3 m core at \$32.80 -----	2469.84	
Total, Nimsic 4 claim -----	2589.84	\$2589.84
MM-2, 5.3 m overburden at \$40.00 -----	212.00	
70.2 m core at \$32.80 -----	2302.55	
	2514.56	
MM-3, 5.5m overburden at \$40.00 -----	220.00	
68.3 m core at \$32.80 -----	2240.24	
	2460.24	
Total, Nimsic claim -----	4974.80	\$4974.80
MM-4, 3.3 m overburden at \$40.00 -----	132.00	
72.0 m core at \$32.80 -----	2361.50	
	2493.60	
MM-5, 1.8 m overburden at \$40.00 -----	72.00	
78.2 m core at \$32.80 -----	2549.32	
	2621.32	
Total, Nimsic 3 claim -----	5114.92	<u>5114.92</u>
Total		\$12679.56

CONTRACTOR

H. Allen Diamond Drilling Ltd.  
Box 1397,  
MERRITT, B.C.



CRAIGMONT MINES LIMITED

LOCATION MAP

1:50,000

Oct. 20th, 1978 N.V.























LOCATION MAP  
1:1,000,000

**LEGEND**

5	Limestone	■	Claim Post, known
4	Andesite, tuff	□	Claim Post, assumed
3	Tuffite	○	Drill hole, drilled
5	Sulfides	○	Drill hole, proposed
2	Khyolite, tuff		
1			

MINERAL RESOURCES DIVISION  
AGRICULTURE CANADA  
**6931**

— Road, all weather  
— Road, four wheel drive  
— Limit of timber  
— Open swamp, meadow

**CRAIGMONT MINES LIMITED**  
KAMLOOPS, B.C.

**82M/12 MM GROUP**

**GEOLOGICAL MAP**

Scale 1:5,000 Date: \_\_\_\_\_

Drawn by: \_\_\_\_\_

82M/12 MM 2